

Expertise

Protocol number: 45482329
Order No. / Reference: 26434749
Inspection date: 13 May 2026

Manufacturer: Audi

Model: Q5 35 TDI S tronic

VIN: WAUZZZFY6N2079634



Vehicle details

Manufacturer / Type / Model / Equipment

Audi Q5 35 TDI S tronic

Vehicle Identification number WAUZZZFY6N2079634

Mileage (Read) 71,035 km

First registration 20 May 2022

Number of holders 2

Next periodical technical inspection 05/2027
(Read from ZBI)

Power / Engine displacement 120 kw / 1,968 ccm

Fuel type / Cylinder Hybrid Diesel / E / 4

Gearbox / Number of gears Automatic / 7

Type of drive Front drive

Type of vehicle SUV

Colour / colour code Brillantschwarz (Y9B)

Doors / Seats 5 / 5

Upholstery type Cloth

Colour of upholstery Anthracite-Black

Re-import no

Vehicle with smoke odor no

readiness to drive Roadworthy



Vehicle details

Maintenance booklet / proof	digital proof / complete	Next maintenance in	13,700 km
Last service on / at	11/2025 at 60,108 km		
Key is / should be	2 / 2	FZG documents	ZB#2 (B) was available (copy), ZB#1 (S) was not available.
		Letter No.	GJ055797
Previous damage / Accident	None detectable	Repainting	None detectable
Inspection conditions	sufficient	Lifting equipment / pit	yes
Test drive	short drive on the company premises	Engine function test	Performed
readiness to drive	Roadworthy		
Manufacturer key number/ type code number	0588 / BQC 00163		
Emission standard	EURO6;WLTP;AP;PI/CI; M, N1 I	fine dust sticker	
Permitted total weight	2,420 kg	Empty weight	

Tyres

Mounted tyres

#	Tyre size	Type of tyre	Manufacturer	Tread depth
1)	235/65 R17 104H	Winter tyres on Light alloy	Continental	4mm / 4mm
2)	235/65 R17 104H	Winter tyres on Light alloy	Continental	4mm / 4mm

Additional tyres

#	Tyre size	Type of tyre	Manufacturer	Tread depth
1)	235/65 R17 104W	Summer tyres on Light alloy	Hankook	4mm / 4mm
2)	235/65 R17 104W	Summer tyres on Light alloy	Hankook	5mm / 5mm

Replacement

Typ	Tyre size	Type of tyre	Manufacturer	Tread depth
Tirefit		Expiration date 01/2027		

Legend: Tread depth information for the left tire is listed first, for the right tire it is listed second on the axle in the direction of travel.



Equipment

Equipment

- Klimaautomatik

Standard equipment

- AdBlue tank (12 liters)
- Airbag: Front side airbags and head airbag system
- Anti-lock braking system (ABS)
- Audi connect emergency call & service with Audi connect Remote & Control
- Electrically adjustable and heated exterior mirrors
- Hill descent control
- Fabric headliner
- Black roof rails with roof rack recognition
- Diesel particulate filter (DPF)
- Rear parking sensors
- Electromechanical parking brake
- Electronic Stability Control (ESC)
- Chassis: Standard chassis
- Remote key (without Safe-Lock)
- Luggage compartment lid, electrically opening and closing
- Transmission: S tronic 7-speed
- rear window wiper
- Interior mirror dimming
- ISOFIX child seat attachment and Top Tether for the outer rear seats
- Rear headrests (3)
- Paint finish: Solid
- LED taillights
- Steering wheel: Leather steering wheel in 3-spoke design with multifunction
- front center armrest
- Non-smoking version
- Wheel: Alloy wheels, 17" 10-spoke
- Wheel: Tire repair kit
- Radio accessories: Data module Europe
- Seat belts
- Seats: Standard front seats
- Seats: Front seats manually adjustable
- Start-stop system
- Separation net
- Glazing: Windscreen in heat-insulating and acoustic glazing
- thermal insulation glazing
- black decorative trim
- Airbag for driver and front passenger
- Accent areas matte black
- Traction control (ASR)
- Audi drive select
- Audi pre sense city
- Exterior mirror housings in body color
- third brake light
- Roof edge spoiler
- Decorative inlays Micrometallic silver
- Tachometer
- Door sill trims with aluminum inlay at the front
- Electronic Differential Lock (EDS)
- Driver Information System
- Electric windows front and rear
- front and rear floor mats
- Cruise control system including speed limiter
- Heated rear window
- Interior lighting
- Manual child lock
- Automatic air conditioning
- boot floor mat
- Front headrests
- Plastic loading sill protector
- LED headlights
- Light/rain sensor
- Mild hybrid
- Model designation according to new performance labeling
- Wheel: On-board tools (excluding jack)
- Wheel: Tire pressure monitoring system
- Radio: MMI Radio plus
- Electromechanical power steering
- Fabric seat covers (synonym)
- Seats: Split-folding rear seat backrest
- Sun visor on driver and passenger side
- Phone: Bluetooth interface
- First aid kit with warning triangle
- Glazing: Clear glass
- Electronic immobilizer
- Central locking with remote control



Extra equipment

- Business package (Audi phone box - MMI Navigation plus (incl. driver information system with color display) - Audi virtual cockpit - Heated front seats - Automatically dimming interior mirror - Electrically adjustable, heated and folding exterior mirrors, automatically dimming on both sides incl. curb view function for the passenger mirror - High-beam assistant - Manual sunshade for rear door windows)
- Electrically adjustable, heated, and folding exterior mirrors with automatic dimming on both sides (including curb view function for the passenger-side exterior mirror with integrated LED turn signal, including heated windshield washer nozzles, convex, flat, or aspherical mirror glass. The curb view function tilts the passenger-side exterior mirror downwards when reverse gear is engaged, providing the driver with a better view of the curb).
- Front seat heating (for driver and front passenger side, individually adjustable in 3 stages via direct selection button on the climate control unit)
- Gloss package (roof frame and window channel strips in anodized aluminum)
- High-beam assist (within the system's limitations, it automatically detects oncoming headlights, taillights of other road users, and light sources in built-up areas. Depending on the traffic situation, the high beams are automatically switched on or off. The system thus improves the driver's visibility and increases comfort.)
- Hold assist (holds the vehicle indefinitely after stopping on inclines and declines typical in road traffic.)
- Seats: Lumbar support for the front seats, electric (4-way) (horizontally and vertically adjustable)
- Steering wheel: Leather steering wheel in 3-spoke design with multifunction plus (with 14 multifunction buttons for convenient operation of the available infotainment features such as audio skip, telephony, NAV button or the freely programmable button - adjustable in height and distance - with full-size airbag - shift paddles for manual changing of the driving modes)
- Camera-based traffic sign recognition (Supports the driver by displaying traffic signs detected within the system's limits, such as speed limits, no-overtaking zones, and temporary speed restrictions, which are within the detection range of the front camera. The traffic sign recognition is displayed automatically in the digital instrument cluster or in the optional Audi virtual cockpit.)
- Driver information system with color display (with high-resolution 7" color display - display content: speed, time, mileage, outside temperature, fuel warning with remaining range, shift indicator, current radio station or music track, radio and media lists, telephone menu, navigation information (if available), driver assistance system alerts, break recommendation, fuel consumption data, fuel-saving tips for economical driving - on-board computer with short- and long-term memory)
- Parking aid plus (supports the driver with acoustic signals and a display message when parking and maneuvering. The parking aid is activated by engaging reverse gear or via a button in the center console, or automatically when the distance to a detected object is less than 90 cm. Automatic activation can be switched on and off.)
- Telephone: Audi Phone Box (features as Audi phone box light; additional functions: The Audi phone box includes: - Bluetooth interface - Hands-free system - Coupling antenna for connecting the mobile phone to the external antenna for improved reception quality and reduced mobile phone radiation in the vehicle interior - LTE support - Charging option via USB port or wireless charging (Qi standard) - Forgetfulness warning - Charging status display in the MMI touch display - Connection of 2 mobile phones)
- Tour Assistance Package (adaptive cruise control - traffic jam assist - Audi active lane assist - predictive efficiency assist - Audi pre sense front - evasive steering assist - left turn assist - high beam assist - camera-based traffic sign recognition)

Brief expert findings

Documents submitted	At the time of the inspection, the vehicle registration certificate Part 2 (title) was available, but the vehicle registration certificate Part 1 (document) was not. (Copy)
VIN comparison	The vehicle identification number (VIN) was read from the vehicle and its conformity with the submitted documents was confirmed by the undersigned during the inspection.
Inspection	The inspection conditions were sufficient for the assessment of the vehicle. Lifting equipment and/or a pit were available for examining the vehicle.
Test drive	A short maneuvering and shunting exercise was carried out on the company premises.
Engine function test	An engine test run was performed.
readiness to drive	The vehicle was roadworthy at the time of inspection.



Value reducing factors

No.	Component group	Description
1	Body	Body (Folgekosten möglich) - Soiled
2	Front bumper	Front bumper - Scratch(es) - Smart repair
3	Rear bumper	Rear bumper - Scratch(es) - Smart repair
4	Door - rear right side	Door (+ Polieren, Folgekosten möglich) - dent(s) - Smart repair
5	Front bumper	Spoiler - Scratch(es) - Replace

Wear and tear

No.	Component group	Description
1	Bonnet	Bonnet (Polierbar, ggf. Folgekosten möglich) - Scratch(es) - No deduction
2	Door - rear left side	Door - Scratch(es) - No deduction
3	Wing mirror - left side	Mirror housing - Scratch(es) - No deduction

The vehicle shows signs of wear and tear commensurate with its age and use.

Order/Scope of Order

An order was placed to prepare a sales report for the described vehicle. This report includes the following:

- Description of key vehicle information
- Documentation of equipment features
(*Delivery by third-party service providers*)
- Documentation of damage, defects, missing parts
- Documentation of prior damage, unrepaired prior damage, repainting
- A brief visual or functional inspection of the equipment details, if possible.
(*Functional testing of driver assistance systems is not included in the scope of services!*)
- a photographic documentation of the vehicle

Basis for the order

This product is based on the guidelines for vehicle returns and valuations published by Alphabet Fleet GmbH. The expert makes the specific findings in each individual case objectively, within the framework of the prescribed standards, based on their own expertise.

The vehicle inspection takes place in a fully assembled, unassembled state.

Damage or defects that can only be detected during disassembly/diagnostic work or through further investigation remain within the realm of prognostic risk. An increased risk exists due to concealed defects caused by fraudulent misrepresentation and which were not identifiable by the expert.

Damage or defects resulting from normal use or wear and tear of the vehicle will be accepted in accordance with the applicable standard.

There was no explicit identification or monetary consideration of the expected features within the product.

Features which, in their nature and extent, slightly exceed normal use but do not constitute unacceptable damage, will be documented and indicated as signs of wear, if applicable.

Damage or defects that, according to the applicable standard, can no longer be attributed to normal use or wear and tear are listed under "Value Reducing Factors" in the product description.

Depending on the product specification, a monetary ID can be provided. If this takes place, the costs can be 100% d or pro rata depending on the vehicle's age and mileage.

Previous damages

No apparent prior damage that had been repaired could be found on the vehicle.



Comments

- Für den montierten Radsatz wurde kein Nachweis erbracht.
- Winterradsatz ist kein Bestandteil des Auslieferungsumfangs.



Figure 1: Diagonal front (left)



Figure 2: Diagonal front (right)



Figure 3: Diagonal rear (left)



Figure 4: Diagonal rear (right)



Figure 5: Interior - front



Figure 6: Interior - rear



Figure 7: Instrument cluster



Figure 8: Instrument panel



Figure 9: Interior 360° view



Figure 10: Cargo area



Figure 11: VIN



Figure 12: VIN



Figure 13: Mounted tyres



Figure 14: Documents



Figure 15: Documents



Figure 16: Documents



Figure 17: Additional tyres

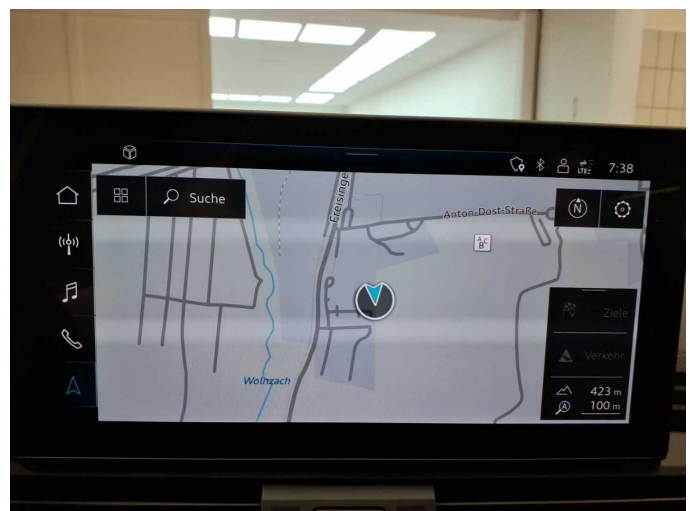


Figure 18: Navigation



Figure 19: Misc.



Figure 20: Misc.



Figure 21: Misc.



Figure 22: Misc.



Figure 23: Misc.



Figure 24: Misc.



Figure 25: Misc.



Figure 26: Misc.



Figure 27: Misc.



Figure 28: Misc.



Figure 29: Misc.



Figure 30: Misc.



Figure 31: Misc.



Figure 32: Misc.



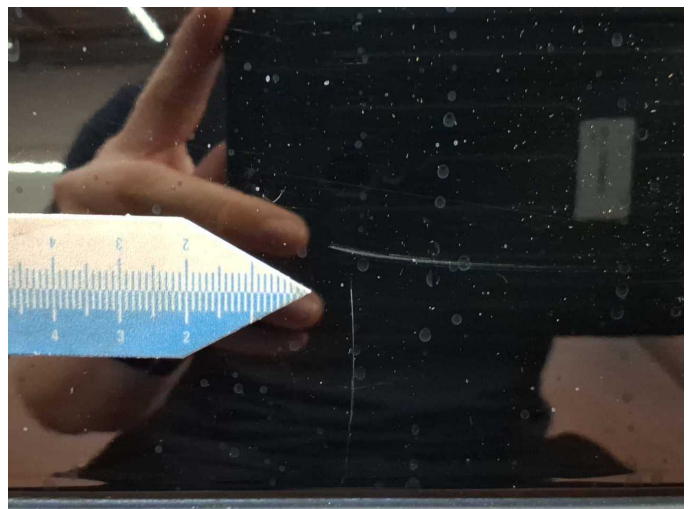
Figure 33: Misc.



Damage 2: Front bumper: Front bumper - Scratch(es) - Smart repair



Damage 2: Front bumper: Front bumper - Scratch(es) - Smart repair



Damage 3: Rear bumper: Rear bumper - Scratch(es) - Smart repair



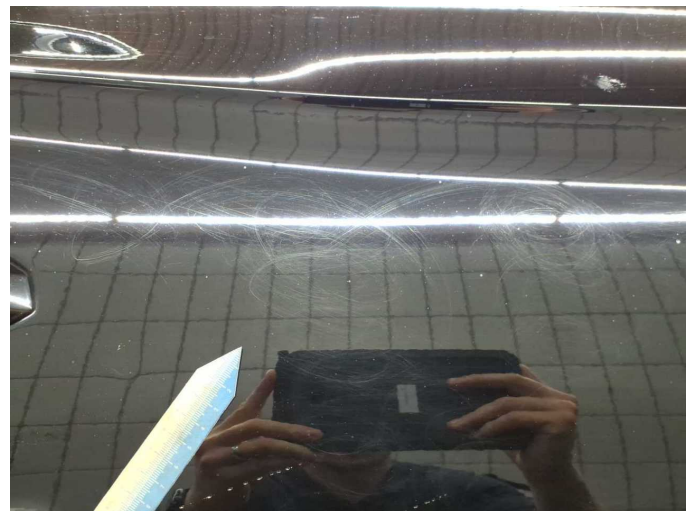
Damage 3: Rear bumper: Rear bumper - Scratch(es) - Smart repair



Damage 4: Door - rear right side: Door (+ Polieren, Folgekosten möglich) - dent(s) - Smart repair



Damage 4: Door - rear right side: Door (+ Polieren, Folgekosten möglich) - dent(s) - Smart repair



Damage 4: Door - rear right side: Door (+ Polieren, Folgekosten möglich) - dent(s) - Smart repair



Damage 4: Door - rear right side: Door (+ Polieren, Folgekosten möglich) - dent(s) - Smart repair



Damage 5: Front bumper: Spoiler - Scratch(es) - Replace



Damage 5: Front bumper: Spoiler - Scratch(es) - Replace



Wear and tear 1: Bonnet: Bonnet (Polierbar, ggf. Folgekosten möglich) - Scratch(es) - No deduction



Wear and tear 1: Bonnet: Bonnet (Polierbar, ggf. Folgekosten möglich) - Scratch(es) - No deduction



Wear and tear 3: Wing mirror - left side: Mirror housing - Scratch(es) - No deduction



Wear and tear 3: Wing mirror - left side: Mirror housing - Scratch(es) - No deduction



Wartungshistorie

(gemäß Auftraggeber Informationen)

Fahrgestellnummer: WAUZZZFY6N2079634
Hersteller / Modell: AUDI AUDI Q5 35 TDI S tronic

Datum	KM-Stand	Beschreibung
05.11.2025	60.108	Bremsbelagfühler ern; Bremse Sonstiges; Bremsklötze hinten; Bremsklötze vorne; Getriebeöl ern/prüfen; Kraftstofffilter ern; Motoröl b. Wartung; Ölfilter ern; Regelwartungsdienst; Reparatur Sonstiges; Wartung Sonstiges
04.06.2024	39.236	Bremsflüssigkeit; Bremsflüssigkeit ern; Motoröl b. Wartung; Ölfilter ern; Ölwechsel; Wartung Sonstiges
24.11.2023	30.450	Regelwartungsdienst; Reparatur Sonstiges
07.07.2023	20.671	Motoröl b. Wartung; Ölfilter ern; Ölwechsel; Wartung Sonstiges