

Expertise

Protocol number: 46167357
Order No. / Reference: 26543354
Inspection date: 19 Jun 2026

Manufacturer: Volkswagen

Model: Passat Variant 2.0 TDI SCR DSG Business

VIN: WVVZZZ3CZME104646



Vehicle details

Manufacturer / Type / Model / Equipment

Volkswagen Passat Variant 2.0 TDI SCR DSG Business

Vehicle Identification number WVVZZZ3CZME104646

Mileage (Read) 136,483 km

First registration 4 May 2021

Number of holders 1

Next periodical technical inspection 05/2026

(Report not on hand)

Power / Engine displacement 110 kw / 1,968 ccm

Fuel type / Cylinder Diesel / 4

Gearbox / Number of gears Automatic / 7

Type of drive Front drive

Type of vehicle Station wagon

Colour / colour code Reflexsilber-metallic

Doors / Seats 5 / 5

Upholstery type Cloth

Colour of upholstery Black-Grey



Vehicle details			
Maintenance booklet / proof	digital proof / complete	Next maintenance in	14,100 km
Last service on / at	07/2025 at 120,544 km		
Key is / should be	2 / 2	FZG documents	ZB#2 (B) was available (copy), ZB#1 (S) was not available.
		Letter No.	GC198611
Previous damage / Accident	Detectable	Repainting	None detectable
Inspection conditions	sufficient	Lifting equipment / pit	No
Test drive	Not performed	Engine function test	Performed
Manufacturer key number/ type code number	0603 / BQS 00836		
Emission standard	EURO6;WLTP;AP;PI/CI; M, N1 I	fine dust sticker	
Permitted total weight	2,200 kg	Empty weight	

Tyres

Mounted tyres				
#	Tyre size	Type of tyre	Manufacturer	Tread depth
1)	215/60 R16 95V	Summer tyres on Light alloy	Goodyear	5mm / 5mm
2)	215/60 R16 95V	Summer tyres on Light alloy	Goodyear	5mm / 5mm
Additional tyres				
#	Tyre size	Type of tyre	Manufacturer	Tread depth
1)	215/60 R16 99H	Winter tyres on Light alloy	Goodyear	7mm / 7mm
2)	215/60 R16 99H	Winter tyres on Light alloy	Goodyear	7mm / 7mm
Replacement				
Typ	Tyre size	Type of tyre	Manufacturer	Tread depth
E	215/60 R16 95V	Summer tyres on Steel	Bridgestone	5 mm

Legend: Tread depth information for the left tire is listed first, for the right tire it is listed second on the axle in the direction of travel.



Equipment

Standard equipment

- Airbag for driver and front passenger
- Anti-lock braking system (ABS)
- Adaptive Cruise Control (ACC) "stop & go", including speed limiter
- Hill start assist
- Chrome trim on the side windows
- black roof rails
- Parking aid - warning signals for obstacles in the front and rear area
- Automatic headlight control
- Remote release for luggage compartment lid
- Pedestrian detection
- Adjustable luggage compartment floor
- Interior lights front and rear with switch-off delay and dimming function
- Instrument cluster with electronic speedometer, odometer and trip odometer, tachometer
- LED fog lights and cornering lights
- LED headlights with daytime running lights
- Headlight range control
- "Premium" multifunction display with multicolor screen
- Mesh partition
- Emergency braking assistant "Front Assist" (for automatic distance control ACC up to 210 km/h)
- Upholstery: Fabric "Weave"
- Radio "Composition"
- Radio accessories: Digital radio reception DAB+
- Tire pressure monitoring system (passive)
- LED taillights
- Gearshift knob in leather
- Keyless start system without safe locking
- Seat belts: Three-point automatic seat belt
- Seats: Front seats are height-adjustable
- 12V power outlet on the rear of the center console
- Textile floor mats
- Warning tone and light for unfastened seat belts front and rear
- Airbag, head airbag system for front and rear passengers
- App-Connect
- Electrically adjustable and heated exterior mirrors
- Cup holders (2) front
- third brake light
- Headliner in Mistral Grey
- Diesel particulate filter
- Electronic parking brake including auto-hold function
- Electronic stability program and electromechanical brake booster
- Windscreen made of laminated safety glass, heat and sound insulating
- Transmission: 7-speed DSG
- ISOFIX mounting points
- Air conditioning
- Rear headrests (3)
- Front headrests
- LED taillights
- Steering wheel: Multifunction steering wheel in leather, with paddle shifters
- Fatigue detection
- Non-smoking version
- Emergency call service
- Package: Light and Sight Package "Plus"
- Proactive occupant protection system in conjunction with "Front Assist"
- Rain sensor
- Wheels: 4 light alloy wheels "Sepang" 6.5 J x 16
- Rear bench seat, undivided, backrest asymmetrically split and foldable, with center armrest
- Power steering
- Seats: Lumbar support in the front
- Start-stop system
- Telephone interface
- First aid kit, warning triangle and high-visibility vest
- Electronic immobilizer



Extra equipment

- App-Connect Wireless (Volkswagen offers three interfaces for connecting smartphones with numerous possibilities: - Apple CarPlay - Android Auto from Google - MirrorLink)
- Chassis: Rear suspension with fully automatic level control
- Windscreen is wirelessly heated and infrared-reflecting.
- Removable luggage compartment protective mat (back of the rear seat backrest with black rubber coating)
- Package: "Business Premium" package incl. navigation (from Business trim level) (2 USB-C ports in the front, 1 USB-C charging port in the rear, 230V socket, App-Connect incl. wireless, Apple CarPlay, Android Auto, "Travel Assist" driver assistance system and "Lane Assist" lane keeping system, Air Care Climatronic with 3-zone temperature control, allergen filter and rear controls, lumbar support in the front, electric on the driver's side, massage function on the driver's side, "Rear View" reversing camera, heated windshield washer nozzles, Comfort telephone interface, inductive charging function, heated front seats)
- Proactive occupant protection system and lane change assistant "Side Assist" (Proactive occupant protection system in conjunction with "Front Assist" and "Side Assist" - lane change assistant "Side Assist" and parking assistant)
- Wheels: Spare wheel in driving tire size, steel
- Keyless start system with safe locking
- Rear side windows and rear window tinted
- Voice control
- On-board tools and jack
- Anti-theft alarm system (interior monitoring, backup horn and tow-away protection - illuminated make-up mirror in the sun visors, extendable sun visors)
- Fire extinguisher
- Luggage net
- Paint finish: Metallic
- Navigation system "Discover Media" incl. "Streaming & Internet" (4x20 watts, user interface with proximity sensor, dual tuner with phase diversity, vehicle menu, speed, volume adjustment, map, 2D display, tone control, 3-way TFT display with touchscreen operation, navigation "Discover Media" incl. "Streaming & Internet", MP3 radio, telephone contact addresses for navigation, telephone interface, 2 USB ports also for iPod/iPhone, traffic sign recognition "VW Media Control", We Connect Plus, 3 years, incl. We Connect route guidance, dynamic RDS, TMC tuner)
- Package: Driver assistance package including "Emergency Assist" in conjunction with Business Premium package (Adaptive Cruise Control ACC "stop & go", with speed limiter - Driving assistant "Travel Assist", lane keeping assistant "Lane Assist" and "Emergency Assist" - Emergency braking assistant "Front Assist" (for adaptive cruise control ACC up to 210 km/h) - Parking assistant "Park Assist" including parking aid - Lane change assistant "Side Assist" and parking exit assistant)
- "Comfort" telephone interface with inductive charging function (hands-free system)

Brief expert findings

Documents submitted	At the time of the inspection, the vehicle registration certificate Part 2 (title) was available, but the vehicle registration certificate Part 1 (document) was not. (Copy)
VIN comparison	The vehicle identification number (VIN) was read from the vehicle and its conformity with the submitted documents was confirmed by the undersigned during the inspection.
Inspection	The inspection conditions were sufficient for the assessment of the vehicle. No lifting equipment or pit was available for inspecting the vehicle. Therefore, inspection of the vehicle's underside was only possible to a limited extent.
Test drive	No test drive/shunting maneuver was carried out during the inspection of the vehicle.
Engine function test	An engine test run was performed.

Wear and tear

No.	Component group	Description
1	Headlight	Headlight - left side - Stone chips - No deduction
2	Headlight	Headlight - right side - Stone chips - No deduction
3	Vehicle glazing	Windscreen - Stone chips - No deduction

The vehicle shows signs of wear and tear commensurate with its age and use.



Previous damages

No.	Previous damage	Extent of damage (Net)
1	Front, Side - left, Provided by user / customer, from 9 Feb 2026	856,74 €
2	Front, Provided by user / customer, from 5 Feb 2026	911,24 €
3	Rear, Provided by user / customer, from 2 Jul 2024	1.470,35 €

Paint coat thickness measurement

Roof	129 µm	Roof rail - left side	100 µm
Roof rail - right side	109 µm	Boot lid / rear door	106 µm
Mudguard - left side	99 µm	Mudguard - right side	118 µm
Bonnet	120 µm	Side panel - rear left side	105 µm
Side panel - rear right side	102 µm	Door - rear left side	94 µm
Door - rear right side	98 µm	Door - front left side	99 µm
Door - front right side	97 µm		

Order/Scope of Order

An order was placed to prepare a sales report for the described vehicle. This report includes the following:

- Description of key vehicle information
- Documentation of equipment features
(Delivery by third-party service providers)
- Documentation of damage, defects, missing parts
- Documentation of prior damage, unrepaired prior damage, repainting
- A brief visual or functional inspection of the equipment details, if possible.
(Functional testing of driver assistance systems is not included in the scope of services!)
- a photographic documentation of the vehicle

Basis for the order

This product is based on the guidelines for vehicle returns and valuations published by Alphabet Fleet GmbH. The expert makes the specific findings in each individual case objectively, within the framework of the prescribed standards, based on their own expertise.

The vehicle inspection takes place in a fully assembled, unassembled state.

Damage or defects that can only be detected during disassembly/diagnostic work or through further investigation remain within the realm of prognostic risk. An increased risk exists due to concealed defects caused by fraudulent misrepresentation and which were not identifiable by the expert.

Damage or defects resulting from normal use or wear and tear of the vehicle will be accepted in accordance with the applicable standard.

There was no explicit identification or monetary consideration of the expected features within the product.

Features which, in their nature and extent, slightly exceed normal use but do not constitute unacceptable damage, will be documented and indicated as signs of wear, if applicable.

Damage or defects that, according to the applicable standard, can no longer be attributed to normal use or wear and tear are listed under "Value Reducing Factors" in the product description.

Depending on the product specification, a monetary ID can be provided. If this takes place, the costs can be 100% d or pro rata depending on the vehicle's age and mileage.

Previous damages

According to available information previous damages were repaired at the vehicle. Traces of repairs, which allow conclusions about the area of repair, were not recognizable during the inspection.



Comments

Wartungshistorie gemäß Auftraggeber Informationen.

Der beiliegende Radsatz ist nicht Bestandteil der vorliegenden Fahrzeugausstattung.



Figure 1: Diagonal front (left)



Figure 2: Diagonal front (right)



Figure 3: Diagonal rear (left)



Figure 4: Diagonal rear (right)



Figure 5: Interior - front

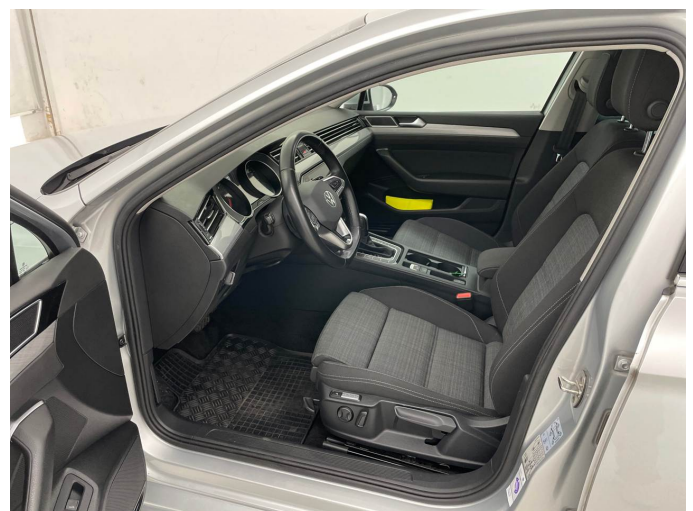


Figure 6: Interior - front



Figure 7: Interior - rear



Figure 8: Interior - rear



Figure 9: Instrument cluster



Figure 10: Instrument panel



Figure 11: Interior 360° view



Figure 12: Cargo area



Figure 13: Cargo area



Figure 14: VIN



Figure 15: Mounted tyres



Figure 16: Mounted tyres

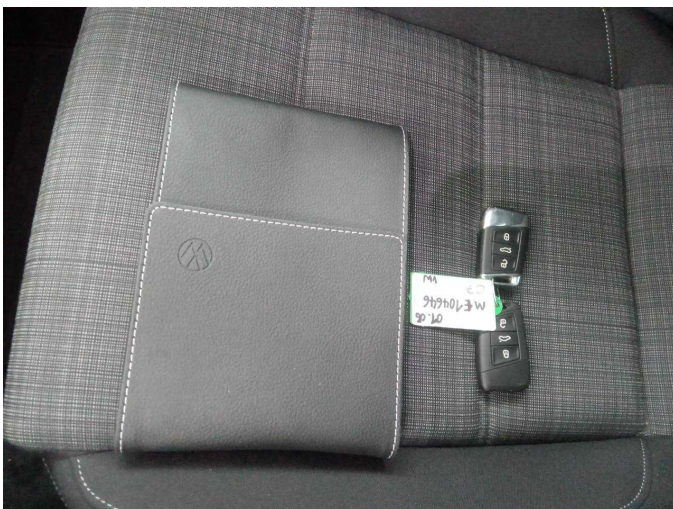


Figure 17: Documents



Figure 18: Additional tyres



Figure 19: Additional tyres



Figure 20: Additional tyres



Figure 21: Additional tyres



Figure 22: Additional tyres



Figure 23: Navigation



Figure 24: Misc.



Figure 25: Misc.



Figure 26: Misc.



Figure 27: Misc.



Figure 28: Misc.

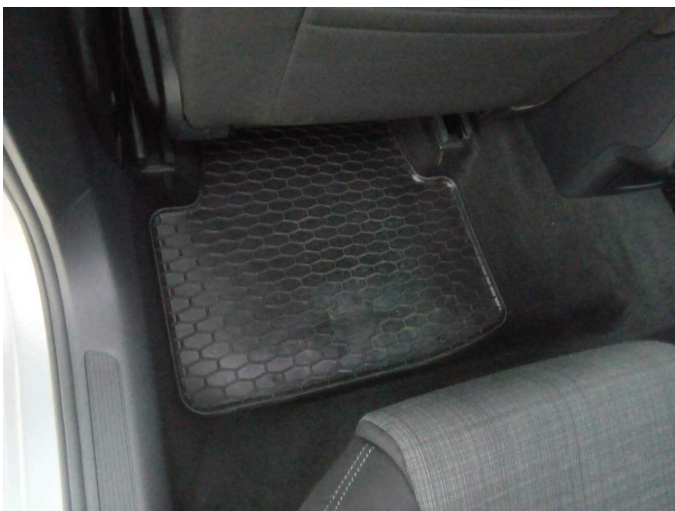


Figure 29: Misc.



Figure 30: Misc.



Figure 31: Misc.



Figure 32: Misc.



Figure 33: Misc.



Figure 34: Misc.

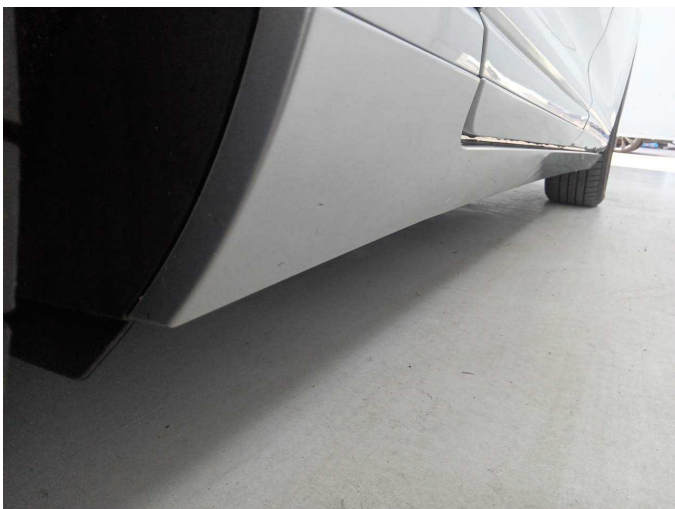


Figure 35: Misc.



Figure 36: Misc.



Figure 37: Misc.



Figure 38: Misc.

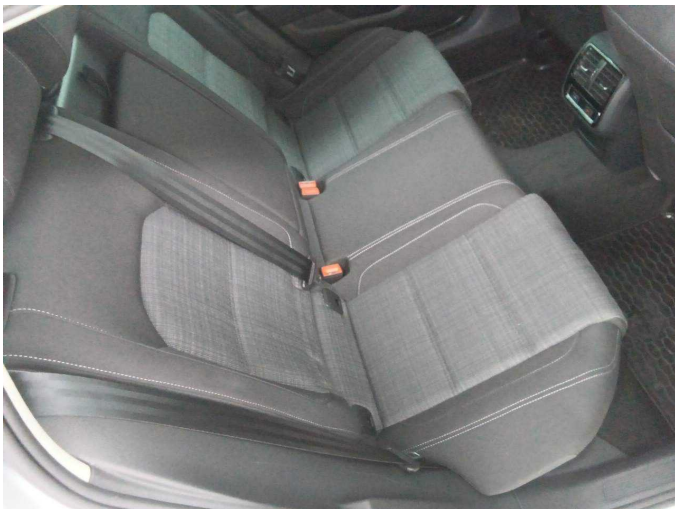


Figure 39: Misc.

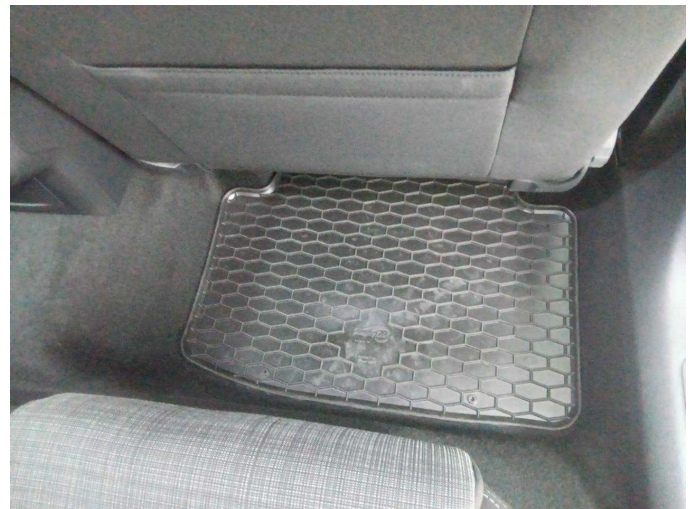


Figure 40: Misc.



Figure 41: Misc.

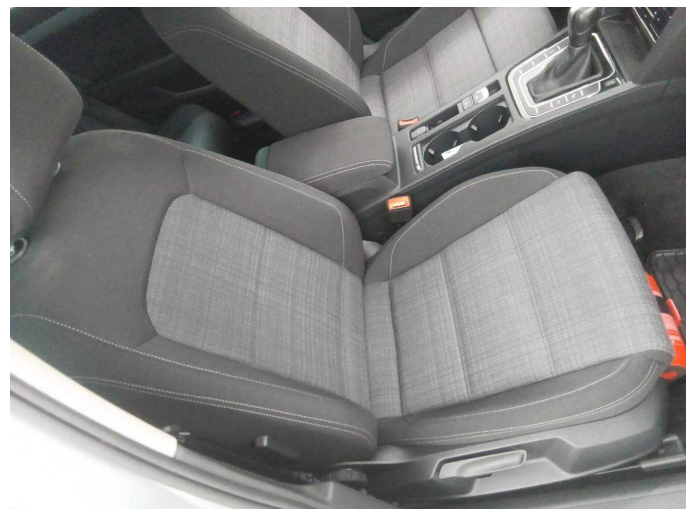


Figure 42: Misc.



Figure 43: Misc.



Figure 44: Misc.



Figure 45: Misc.



Figure 46: Misc.



Figure 47: Misc.



Figure 48: Misc.



Figure 49: Misc.



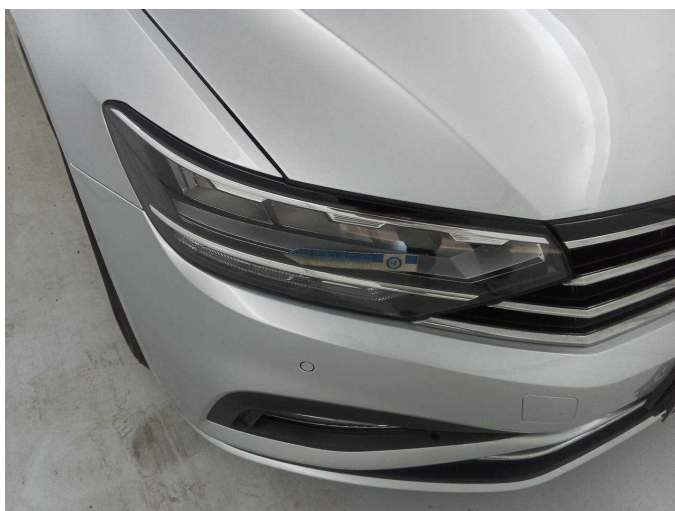
Figure 50: Misc.



Wear and tear 1: Headlight: Headlight - left side - Stone chips - No deduction



Wear and tear 1: Headlight: Headlight - left side - Stone chips - No deduction



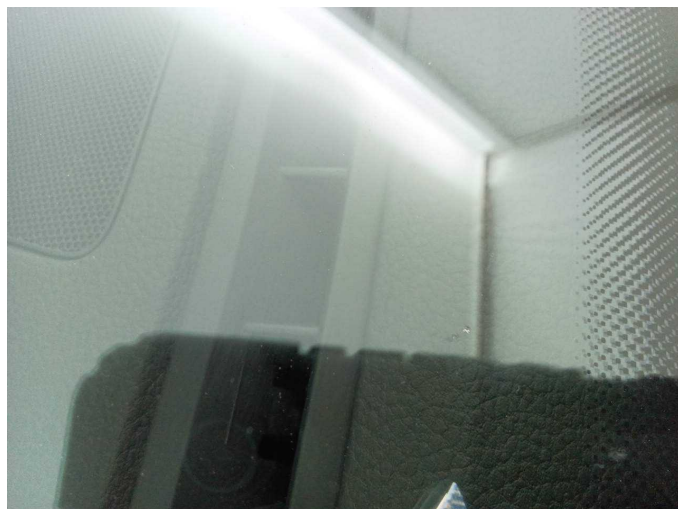
Wear and tear 2: Headlight: Headlight - right side - Stone chips - No deduction



Wear and tear 2: Headlight: Headlight - right side - Stone chips - No deduction



Wear and tear 3: Vehicle glazing: Windscreen - Stone chips - No deduction



Wear and tear 3: Vehicle glazing: Windscreen - Stone chips - No deduction



Wartungshistorie

(gemäß Auftraggeber Informationen)

Fahrgestellnummer: WVVZZZ3CZME104646

Hersteller / Modell: VOLKSWAGEN VW Passat Variant 2.0 TDI SCR DSG Business

Datum	KM-Stand	Beschreibung
10.09.2025	121.918	Reparatur Sonstiges; Systemtest/Eigendiagnose
24.07.2025	120.544	Bremsflüssigkeit; Bremsflüssigkeit ern; Getriebeöl ern/prüfen; Motoröl b. Wartung; Ölfilter ern; Regelwartungsdienst; Wartung Sonstiges
08.05.2024	90.759	Bremse Sonstiges; Bremsklötze hinten; Bremsklötze vorne; Bremsscheiben hinten; Bremsscheiben vorne; Kraftstofffilter ern; Luftfiltereinsatz ern; Motoröl b. Wartung; Ölfilter ern; Regelwartungsdienst; Systemtest/Eigendiagnose; Wartung Sonstiges
07.05.2024	0	HU + AU
27.04.2023	60.090	Bremsflüssigkeit ern; Motoröl b. Wartung; Regelwartungsdienst
02.05.2022	30.084	Motoröl b. Wartung; Regelwartungsdienst