

## Expertise

Protocol number: 46302121  
Order No. / Reference: 26121135  
Inspection date: 2 Jul 2026

Manufacturer: Mercedes-Benz

Model: C 200 d T 9G-TRONIC Avantgarde

VIN: W1KAH0DB9PF102144



### Vehicle details

#### Manufacturer / Type / Model / Equipment

Mercedes-Benz C 200 d T 9G-TRONIC Avantgarde

**Vehicle Identification number** W1KAH0DB9PF102144

**Mileage (Read)** 104,345 km

**First registration** 28 Mar 2023

**Number of holders** 1

**Power / Engine displacement** 120 kw / 1,993 ccm

**Fuel type / Cylinder** Hybrid Diesel / E / 4

**Gearbox / Number of gears** Automatic / 9

**Type of drive** Rear drive

**Type of vehicle** Station wagon

**Colour / colour code** SPEKTRALLBLAU  
METALLIC

**Doors / Seats** 5 / 5

**Upholstery type** Cloth / leather  
combination

**Colour of upholstery** Black-Grey

**Vehicle with smoke odor** no



## Vehicle details

<b>Maintenance booklet / proof</b>	Non-existent	<b>Next maintenance in</b>	365 Tag(e)
<b>Key is / should be</b>	2 / 2	<b>FZG documents</b>	ZB#2 (B) was available (copy), ZB#1 (S) was not available.
		<b>Letter No.</b>	GS681828
<b>Previous damage / Accident</b>	None detectable	<b>Repainting</b>	None detectable
<b>Inspection conditions</b>	sufficient	<b>Lifting equipment / pit</b>	yes
<b>Test drive</b>	Not performed	<b>Engine function test</b>	Performed
<b>Manufacturer key number/ type code number</b>	2222 / BDF 00261		
<b>Emission standard</b>	EURO6;WLTP;AP;PI/CI; M, N1 I	<b>fine dust sticker</b>	
<b>Permitted total weight</b>	2,400 kg	<b>Empty weight</b>	

## Tyres

### Mounted tyres

#	Tyre size	Type of tyre	Manufacturer	Tread depth
1)	225/50 R17 98H	Winter tyres on Light alloy	Goodyear	8mm / 8mm
2)	225/50 R17 98H	Winter tyres on Light alloy	Goodyear	8mm / 8mm

**Legend:** Tread depth information for the left tire is listed first, for the right tire it is listed second on the axle in the direction of travel.



## Equipment

### Standard equipment

- Airbag for driver and front passenger
- Airbag: Center airbag
- Airbag: Windowbag for driver and front passenger
- Left and right exterior mirrors are heated and electrically adjustable
- Roof rails in polished aluminum
- Double cup holder at the front
- EASY-PACK tailgate
- Electronic Stability Program (ESP)
- Velour floor mats
- Transmission: 9-speed automatic, 9G-TRONIC
- Rear bumper in body color
- Interior headliner fabric crystal grey
- KEYLESS-GO start function
- THERMATIC automatic climate control with 1 climate zone
- Front headrests
- Cargo area cover including EASY-PACK safety net
- Steering wheel: Multifunction sports steering wheel in leather
- Package: Storage
- Package: Interior lighting package
- Radio: Extended MBUX functions
- Radio accessories: Digital radio (DAB)
- Radio accessories: Central display
- Tire pressure monitoring system (TPMS)
- Windscreen wipers with rain sensor
- Seats: Rear seat backrests foldable
- Cruise control
- Electronic immobilizer
- Decorative elements in diamond pattern, silver-grey
- Airbag: Automatic passenger airbag deactivation
- Airbag: Side airbag for driver and front passenger
- Ambient lighting with 64 light colors
- Basic services
- Brake assist, active
- Diesel particulate filter
- DYNAMIC SELECT
- ECO start/stop function
- Electric windows (4-way)
- Speed Limit Assistant
- rear window wiper
- Heated rear window
- ISOFIX child seat attachment with top tether in the rear
- Mechanical child safety lock for the rear doors
- Rear headrests (3)
- Paint finish: Solid
- LED High Performance Headlights
- Mercedes-Benz emergency call system
- Center console in high-gloss black
- Package: AVANTGARDE Exterior
- Upholstery: ARTICO leatherette/fabric
- Radio: MBUX
- Radio accessories: Communication module (LTE) for using Mercedes me connect services
- Remote Services Plus
- Power steering
- Lane Keeping Assist, active
- High-visibility vest for drivers
- Central locking with remote control



### Extra equipment

- Business Package
- Fuel tank with larger capacity
- Package: Advanced Comfort Package (Heated seats for driver and front passenger - Seat Comfort Package: - Numerous electric and manual adjustment options for the front seats to adapt to the specific body and comfort requirements of the driver and front passenger - Electro-pneumatic 4-way lumbar support and lateral support adjustment with control element on the seat - Electric seat cushion tilt adjustment - Electric height adjustment - Electric backrest adjustment - Electric seat cushion depth adjustment - Mechanical longitudinal adjustment - Mechanical headrest adjustment)
- Package: Night (for T-Model with Avantgarde exterior) (Radiator grille: louvers in high-gloss black and trim in glossy chrome (17") 5-spoke design light-alloy wheels, black painted and diamond-turned with 225/50 R17 tires on 7Jx17 ET44, 5 Front apron with trim (wing) in high-gloss black Rear bumper with trim (wing) in high-gloss black Belt trim strip and window surrounds in high-gloss black Exterior mirror housings painted in high-gloss black Heat-insulating dark tinted glass at the rear (from the B-pillar) Roof rails in black)
- Package: Mirror package (both exterior mirrors electrically folding (button in the driver's door control panel) - interior mirror and exterior mirror on the driver's side automatically dimming continuously - ambient lighting of the exterior mirror to illuminate the entry area with projection of the Mercedes-Benz logo)
- Seats: Comfort seats
- Type designation removed from trunk lid
- Black fabric headliner
- Paint finish: Metallic
- Package: Advanced Light Package (DIGITAL LIGHT: -HD system with projection module (more than 1.3 million pixels per headlight) and MULTIBEAM LED background module -Adaptive Highbeam Assist Plus -ULTRA RANGE high beam with a range of more than 600 m -Topography compensation -Cornering light with roundabout and intersection function -Active curve light with predictive control -Extended fog light, city light, country road light, motorway light, motorway high beam and bad weather light)
- Package: Infotainment package (MBUX Navigation Premium (hard drive navigation, pre-installation for Live Traffic Information), traffic sign assistant, smartphone integration (connects the mobile phone wirelessly to the multimedia system via Apple CarPlay and Android Auto), wireless charging system for mobile devices in the front)
- Package: Parking (12 ultrasonic sensors - reversing camera - Active Parking Assist with PARKTRONIC: detects free parking spaces, assisted parking, visual and acoustic warning, display of camera and ultrasonic data in the media display - Cross traffic warning: can provide visual and acoustic warnings when reversing out of a parking space and, if necessary, automatically initiate emergency braking - Reverse maneuvering brake: can trigger a braking process - Drive-away assist)
- Wheels: 43.2 cm (17") light alloy wheels in 5-spoke design (black painted and polished with 225/50 R 17 on 7 J x 17 ET 44.5)
- Heat-insulating dark tinted glass

### Brief expert findings

Documents submitted	At the time of the inspection, the vehicle registration certificate Part 2 (title) was available, but the vehicle registration certificate Part 1 (document) was not. (Copy)
VIN comparison	The vehicle identification number (VIN) was read from the vehicle and its conformity with the submitted documents was confirmed by the undersigned during the inspection.
Inspection	The inspection conditions were sufficient for the assessment of the vehicle. Lifting equipment and/or a pit were available for examining the vehicle.
Test drive	No test drive/shunting maneuver was carried out during the inspection of the vehicle.
Engine function test	An engine test run was performed.

### Value reducing factors

No.	Component group	Description
1	Wheel / tyres	Tyres - complete set (Winterreifen anstelle von Sommerreifen) - Differs from the original configuration - No deduction
2	Trim / covers	Boot lid - interior trim - Scratch(es) - Loss in value
3	Sill - right side	Sill - dent(s) - Smart repair
4	Sill - left side	Sill - Dent / paintcoat damage - Smart repair
5	Door - front left side	Door (Mit Kratzer) - dent(s) - Repair and paint
6	Rear bumper	Rear bumper - Scratch(es) - Paint



## Wear and tear

No.	Component group	Description
1	Misc.	Inspection / maintenance - No evidence - No deduction
2	Bonnet	Bonnet - Stone chips - No deduction
3	Front bumper	Front bumper - Stone chips - No deduction

The vehicle shows signs of wear and tear commensurate with its age and use.

## Order/Scope of Order

An order was placed to prepare a sales report for the described vehicle. This report includes the following:

- Description of key vehicle information
- Documentation of equipment features  
*(Delivery by third-party service providers)*
- Documentation of damage, defects, missing parts
- Documentation of prior damage, unrepaired prior damage, repainting
- A brief visual or functional inspection of the equipment details, if possible.  
*(Functional testing of driver assistance systems is not included in the scope of services!)*
- a photographic documentation of the vehicle

## Basis for the order

This product is based on the guidelines for vehicle returns and valuations published by Alphabet Fleet GmbH. The expert makes the specific findings in each individual case objectively, within the framework of the prescribed standards, based on their own expertise.

The vehicle inspection takes place in a fully assembled, unassembled state.

Damage or defects that can only be detected during disassembly/diagnostic work or through further investigation remain within the realm of prognostic risk. An increased risk exists due to concealed defects caused by fraudulent misrepresentation and which were not identifiable by the expert.

Damage or defects resulting from normal use or wear and tear of the vehicle will be accepted in accordance with the applicable standard.

There was no explicit identification or monetary consideration of the expected features within the product.

Features which, in their nature and extent, slightly exceed normal use but do not constitute unacceptable damage, will be documented and indicated as signs of wear, if applicable.

Damage or defects that, according to the applicable standard, can no longer be attributed to normal use or wear and tear are listed under "Value Reducing Factors" in the product description.

Depending on the product specification, a monetary ID can be provided. If this takes place, the costs can be 100% or pro rata depending on the vehicle's age and mileage.

## Previous damages

No apparent prior damage that had been repaired could be found on the vehicle.



Figure 1: Diagonal front (left)



Figure 2: Diagonal front (right)



Figure 3: Diagonal rear (left)



Figure 4: Diagonal rear (right)



Figure 5: Interior - front



Figure 6: Interior - rear



Figure 7: Instrument cluster



Figure 8: Instrument panel



Figure 9: Interior 360° view



Figure 10: Cargo area



Figure 11: VIN



Figure 12: Mounted tyres



Figure 13: Documents

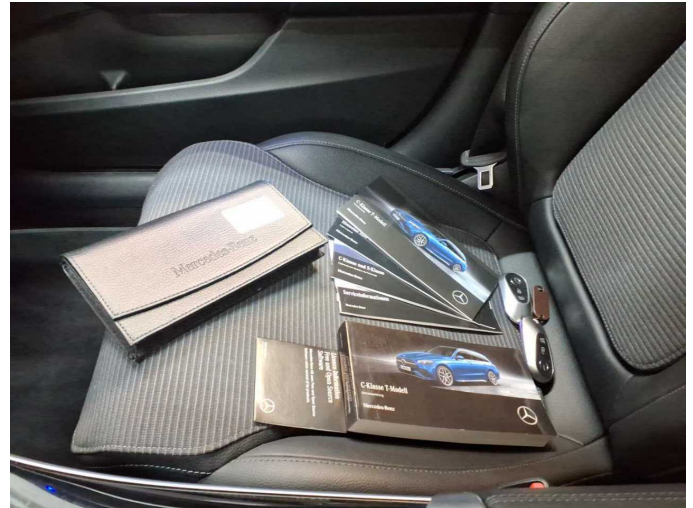


Figure 14: Documents

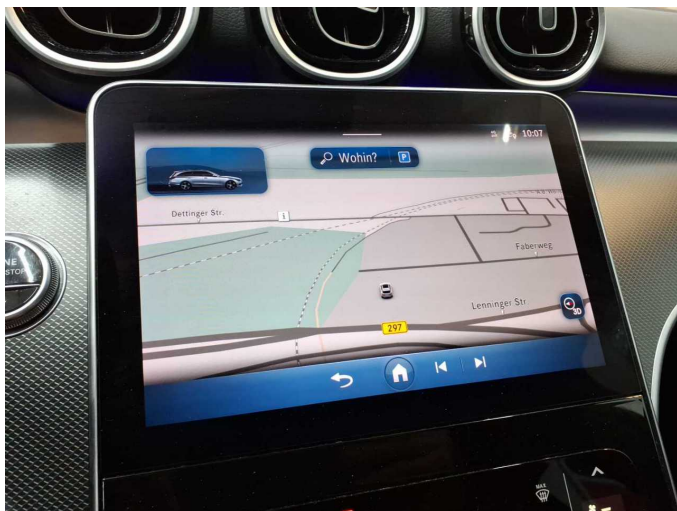


Figure 15: Navigation



Figure 16: Misc.



Figure 17: Misc.

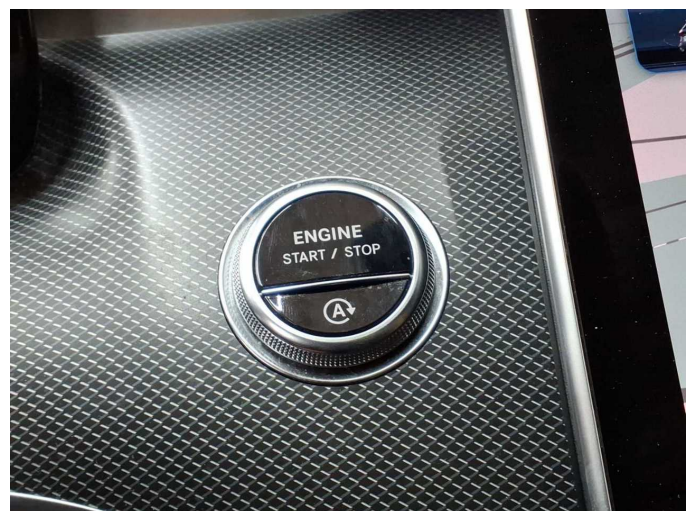


Figure 18: Misc.



Figure 19: Misc.



Figure 20: Misc.

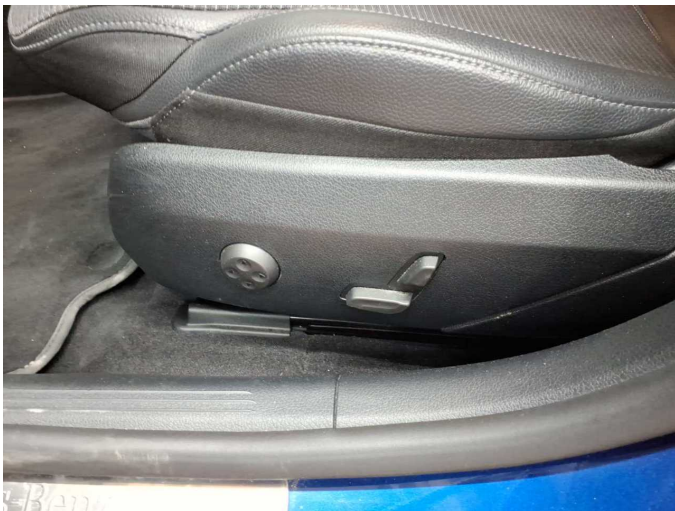


Figure 21: Misc.



Figure 22: Misc.

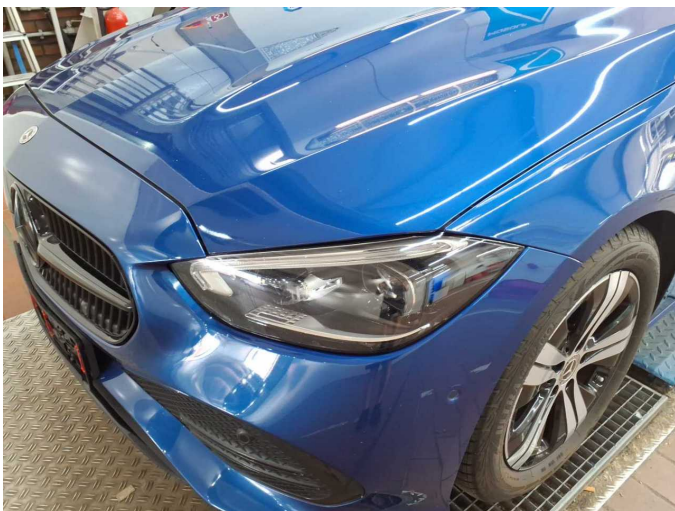


Figure 23: Misc.

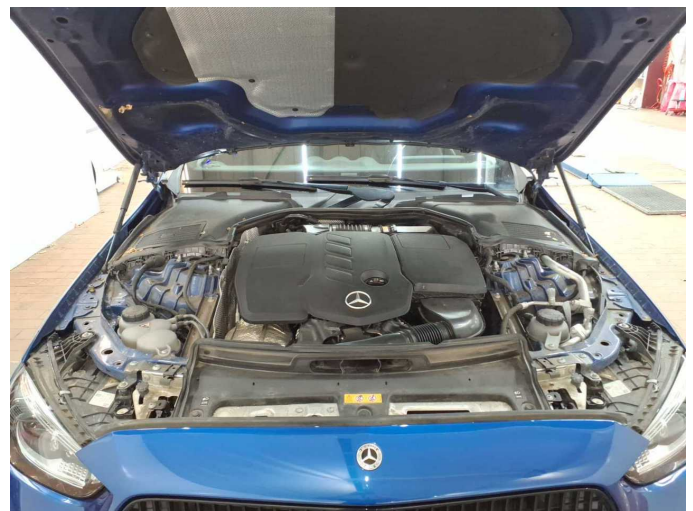


Figure 24: Misc.



Figure 25: Misc.



Figure 26: Misc.



Figure 27: Misc.



Figure 28: Misc.



Figure 29: Misc.



Damage 2: Trim / covers: Boot lid - interior trim - Scratch(es) - Loss in value



**Damage 2:** Trim / covers: Boot lid - interior trim - Scratch(es) - Loss in value



**Damage 2:** Trim / covers: Boot lid - interior trim - Scratch(es) - Loss in value



**Damage 2:** Trim / covers: Boot lid - interior trim - Scratch(es) - Loss in value



**Damage 3:** Sill - right side: Sill - dent(s) - Smart repair



**Damage 3:** Sill - right side: Sill - dent(s) - Smart repair



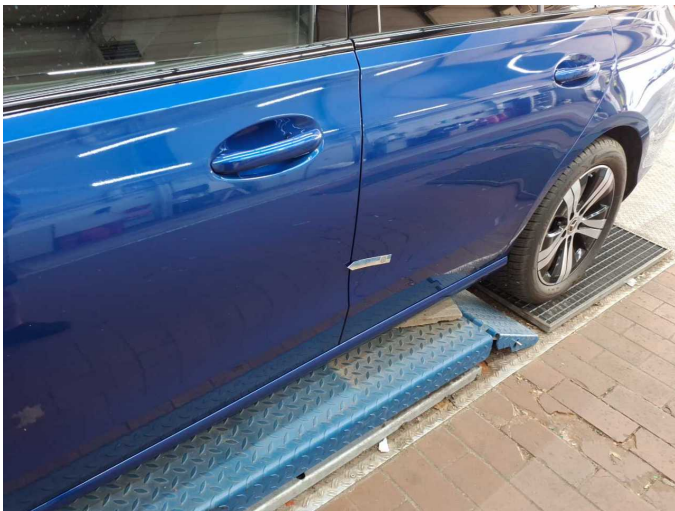
**Damage 4:** Sill - left side: Sill - Dent / paintcoat damage - Smart repair



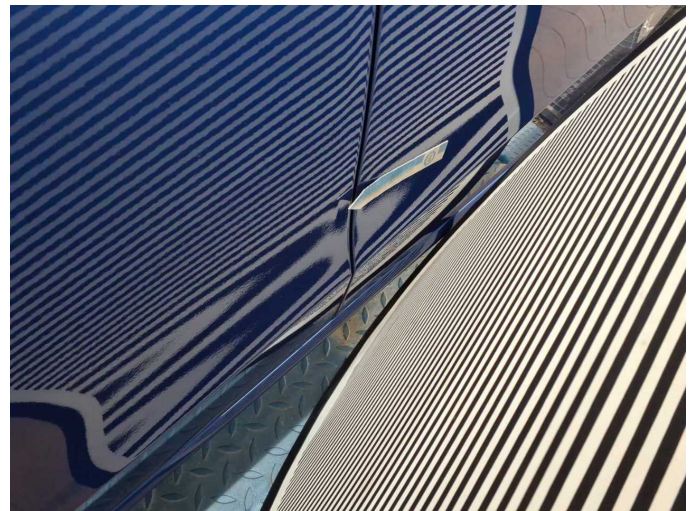
**Damage 4:** Sill - left side: Sill - Dent / paintcoat damage - Smart repair



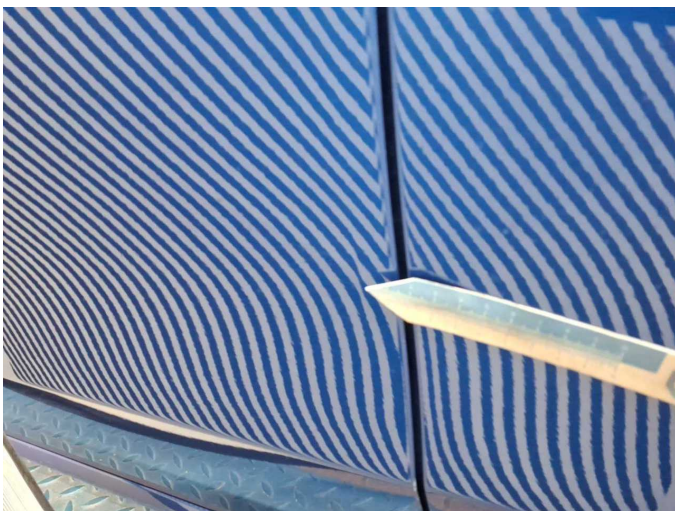
**Damage 4:** Sill - left side: Sill - Dent / paintcoat damage - Smart repair



**Damage 5:** Door - front left side: Door (Mit Kratzer) - dent(s) - Repair and paint



**Damage 5:** Door - front left side: Door (Mit Kratzer) - dent(s) - Repair and paint



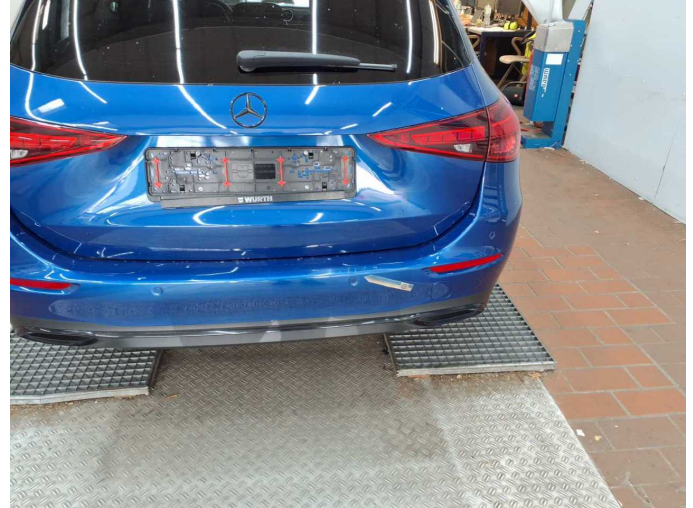
**Damage 5:** Door - front left side: Door (Mit Kratzer) - dent(s) - Repair and paint



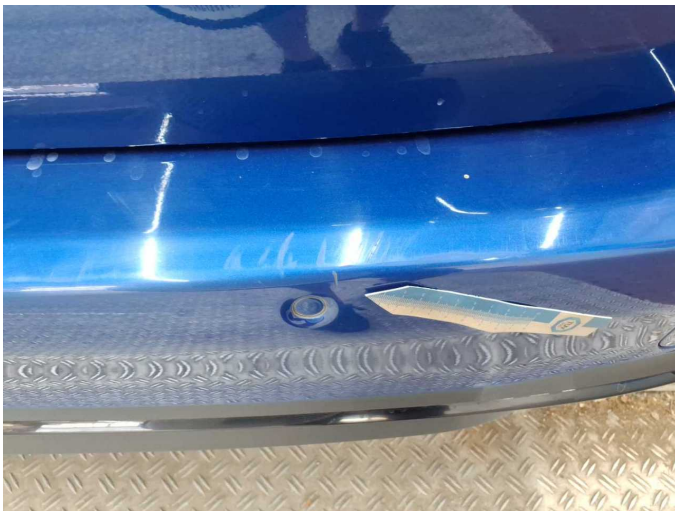
**Damage 5:** Door - front left side: Door (Mit Kratzer) - dent(s) - Repair and paint



**Damage 5:** Door - front left side: Door (Mit Kratzer) - dent(s) - Repair and paint



**Damage 6:** Rear bumper: Rear bumper - Scratch(es) - Paint



**Damage 6:** Rear bumper: Rear bumper - Scratch(es) - Paint



**Damage 6:** Rear bumper: Rear bumper - Scratch(es) - Paint



**Damage 6:** Rear bumper: Rear bumper - Scratch(es) - Paint