

## Expertise

Protocol number: 45945371  
Order No. / Reference: 26406779  
Inspection date: 15 Jun 2026

Manufacturer: Audi

Model: A4 35 TFSI S tronic S line

VIN: WAUZZZF47PA032215



### Vehicle details

#### Manufacturer / Type / Model / Equipment

Audi A4 35 TFSI S tronic S line

**Vehicle Identification number** WAUZZZF47PA032215

**Mileage (Read)** 132,894 km

**First registration** 16 Jan 2023

**Number of holders** 1

**Next periodical technical inspection** 12/2027  
(Report not on hand)

**Power / Engine displacement** 110 kw / 1,984 ccm

**Fuel type / Cylinder** Hybrid Petrol / E / 4

**Gearbox / Number of gears** Automatic / 7

**Type of drive** Front drive

**Type of vehicle** Saloon car

**Colour / colour code** Navarrablau-metallic  
(X5H)

**Doors / Seats** 4 / 5

**Upholstery type** Cloth

**Colour of upholstery** Black

**Re-import** no



## Vehicle details

<b>Maintenance booklet / proof</b>	digital proof / complete	<b>Next maintenance in</b>	16,800 km
<b>Last service on / at</b>	01/2026 at 119,653 km		
<b>Key is / should be</b>	2 / 2	<b>FZG documents</b>	ZB#2 (B) was available (copy), ZB#1 (S) was not available.
		<b>Letter No.</b>	GP868049
<b>Previous damage / Accident</b>	None detectable	<b>Repainting</b>	None detectable
<b>Inspection conditions</b>	sufficient	<b>Lifting equipment / pit</b>	No
<b>Test drive</b>	Not performed	<b>Engine function test</b>	Performed
<b>Manufacturer key number/ type code number</b>	0588 / BNR 01997		
<b>Emission standard</b>	EURO6;WLTP;AP;PI/CI; M, N1 I	<b>fine dust sticker</b>	
<b>Permitted total weight</b>	2,040 kg	<b>Empty weight</b>	
<b>Dimensions</b>	4766 x 1847 x 1417		

## Tyres

**Mounted tyres**

#	Tyre size	Type of tyre	Manufacturer	Tread depth
1)	205/60 R16 99H	Winter tyres on Light alloy	Continental	7mm / 7mm
2)	205/60 R16 99H	Winter tyres on Light alloy	Continental	7mm / 7mm

**Additional tyres**

#	Tyre size	Type of tyre	Manufacturer	Tread depth
1)	245/40 R18 97Y	Summer tyres on Light alloy	Continental	5mm / 5mm
2)	245/40 R18 97Y	Summer tyres on Light alloy	Continental	6mm / 6mm

**Replacement**

Typ	Tyre size	Type of tyre	Manufacturer	Tread depth
	Tirefit	Expiration date 10/2026		

**Legend: Tread depth information for the left tire is listed first, for the right tire it is listed second on the axle in the direction of travel.**

TÜV SÜD Auto Partner GmbH  
Gutenbergstraße 13  
70771 Leinfelden-Echterdingen

Inspection location  
Hartmann Fleet Professionals GmbH  
Leerenstraße 25  
29683 Bad Fallingbommel



## Equipment



## Standard equipment

- Airbag for driver and front passenger (with front passenger airbag deactivation)
- Anti-lock braking system (ABS) (with electronic brake force distribution (EBD) and brake assist)
- Audi pre sense city (can detect vehicles and pedestrians within system limits at speeds up to approximately 85 km/h. If an impending collision is detected, the system warns the driver visually, audibly, and, if necessary, with a braking jolt, and can initiate full deceleration if required to reduce speed or, if necessary, avoid the collision.)
- Electrically adjustable and heated exterior mirrors (with integrated LED turn signals, including heated windshield washer nozzles)
- Headliner in fabric (depending on the chosen interior color, either titanium grey or atlas beige)
- Door sill trims with aluminum inlay at the front, illuminated, with S lettering
- Electronic Differential Lock (EDS)
- Electronic Stability Control (ESC)
- Driver Information System (with high-resolution 5" monochrome display - display content: speed, time, mileage, outside temperature, fuel warning with remaining range, gear shift indicator, current radio station or music track, radio and media lists, telephone menu (in conjunction with multifunction steering wheel), navigation information (if equipped). On-board computer with short- and long-term memory - including break recommendation)
- Cruise control with speed limiter (assists in maintaining a speed of approximately 20 km/h or higher, provided engine and braking power allow. The speed limiter helps to prevent exceeding a speed of approximately 30 km/h. The system limits the speed even when the accelerator pedal is depressed. It is operated via a separate steering column stalk. The set speed is displayed in the driver information system.)
- Interior mirror dimming
- Child lock
- ISOFIX and Top Tether child seat attachment for the outer rear seats (holding device for the practical attachment of ISOFIX child seats with an additional upper attachment point (Top Tether) on the outer rear seats)
- LED taillights (taillights using LED technology impress with faster activation of the taillights and brake lights, thus enabling earlier detection by following traffic. The light signature is a visible recognition signal to the rear.)
- Mild hybrid (Mild hybrid features an enhanced start-stop function, extended energy recuperation during braking to charge the starter battery, and additional lithium-ion storage. This allows the system to recover more energy and switch off the engine more frequently. A supplementary belt-driven starter generator (BSG) is conceptually included for mild hybrid systems. Purely electric driving is not possible.)
- Accent surfaces in matte black (for dashboard, trim panels in door sills and center console insert)
- Traction control (ASR)
- Audi connect Emergency Call & Service with Audi connect Remote & Control (Audi connect Emergency Call: - Online breakdown call - Audi damage service - Audi service appointment online - Online Car Care Audi connect Remote & Control: - Parking position - Vehicle status - Remote locking and unlocking - Remote control of auxiliary heating - Anti-theft alarm notification)
- Exterior mirror housings in body color
- On-board tools (in the luggage compartment)
- third brake light, raised
- Decorative inlays diamond lacquer silver grey
- Tachometer
- Electromechanical parking brake (includes parking brake function when stationary, starting aid by automatic release when starting and full deceleration while driving via all 4 wheels)
- Chassis: Sport chassis (with firmer spring and damping for more direct road contact and sportier handling, lowered by 23 mm compared to standard chassis, shock absorbers and coil springs on front and rear axles)
- Electric windows (front and rear)
- Window channel strips in black (rubber)
- Front and rear floor mats (made of velour in black)
- Automatically opening tailgate (When the luggage compartment is unlocked by the vehicle key, the button in the driver's door or by pressing the soft-touch release on the tailgate, the tailgate swings open automatically.)
- Transmission: S tronic 7-speed
- Top speed limited to 210 km/h
- Interior lighting (front and rear roof module including reading lights - capacitively operated at the front, ambient light on center console, glove box light, passive door warning lights, trunk light on the left, additionally on the right for the A4 Avant/S4 Avant, and tailgate lighting)
- boot floor mat
- Headrests (5) (height adjustable front and rear)
- Fuel tank with increased filling volume (54 l)
- Manual cargo cover
- Steering column, manually adjustable in height and axis
- Light/rain sensor (for controlling the automatic headlight switching, the coming home/leaving home function and the automatic windshield wiper function)
- front center armrest
- Non-smoking version (one 12-volt socket each in the front in front of the cup holders and in the rear for the 2nd row of seats - no cigarette lighter)
- Otto particulate filter
- Wheel: Alloy wheels, 5-Y-spoke (S-design) (size 8.0 J x 18 with tires 245/40 R 18)



- Radio: MMI Radio plus (10.1" color display (1,540 × 720) including MMI touch operation - driver information system with 5" mono display - Bluetooth interface (hands-free calling and audio streaming) - Audi music interface with 1 USB-A and 1 USB-C port, each with data and charging function - passive speakers - AM/FM phase diversity - speed-dependent volume adjustment - voice control system with natural language for controlling infotainment and vehicle functions - WLAN hardware)
- Tire pressure monitoring system (visual and audible warning in case of pressure loss in one or more wheels, display in the driver information system)
- Tire repair kit (compressor and tire sealant, maximum permissible speed 80 km/h)
- Seats: Front seats manually adjustable
- Start-stop system (helps reduce fuel consumption and CO2 emissions by switching off the engine during stationary phases, e.g. at traffic lights. For restarting, the starting process is initiated as soon as the foot brake is released. Can be deactivated at any time via a button.)
- Electronic immobilizer
- Central locking "Keyless-Go" without safe locking (keyless engine start)
- Wheel: Low rolling resistance tires, speed-limited (maximum permissible speed 210 km/h)
- Radio accessories: 8 speakers (passive) front and rear
- Radio accessories: Digital radio reception (DAB) (in addition to the analog station offerings, reception of digitally broadcast radio stations according to the DAB standard. Display of program-related information (e.g., artist and title) as well as additional information in the form of a slideshow (e.g., album art and weather). A second DAB tuner with a second DAB antenna continuously searches for alternative reception frequencies of the selected station. The station list is updated simultaneously.)
- Electromechanical power steering (maintenance-free rack and pinion steering with speed-dependent steering assistance; precise steering feel at high speeds, excellent support when parking.)
- First aid kit with warning triangle (warning triangle in the trunk - first aid kit in the trunk - 2 high-visibility vests in the door pockets)
- Glazing: Windscreen in heat-insulating and acoustic glazing (windscreen in heat-insulating glazing, green tinted - improved external noise insulation)



## Extra equipment

- Airbags: Front and rear side airbags and head airbag system (Side airbags in the rear offer additional protection for rear passengers. Front side airbags are integrated into the seatbacks and rear side airbags into the side bolsters. With head airbag system: deploys in front of the side window area (front and rear) and thus protects front and outboard rear passengers in a side impact.)
- Assistance Package City in conjunction with Business Package (includes a selection of assistance systems specifically for city traffic - Parking aid plus - Reversing camera - Lane change warning - Audi Pre sense basic - Audi Pre sense rear - Exit warning and rear cross traffic assist)
- Audi virtual cockpit plus (Innovative, fully digital instrument cluster with 12.3-inch display, full HD resolution with additional graphic display options: Classic, Sport and Dynamic design - For flexible and needs-based display of the respective information according to the driver's needs: speed/RPM, map display, Audi connect services, radio/media information, etc. - VIEW button in the multifunction steering wheel)
- Business Package (MMI Navigation plus with MMI touch (including driver information system with color display) - Audi phone box - Leather steering wheel in 3-spoke design with multifunction plus - Heated front seats - Automatically dimming, frameless interior mirror - Electrically adjustable, heated and folding exterior mirrors, automatically dimming on both sides - Rear parking aid - High-beam assistant - Manual sunshade for the rear door windows)
- Comfort automatic climate control 3-zone (in addition to the automatic climate control: - climate control unit with large TFT display and capacitive rocker switches - electronically regulates the air temperature and distribution individually for driver and front passenger - additional climate control unit for setting the rear compartment temperature in the rear center console - automatic recirculation control with dust and odor separating allergen filter - residual heat utilization)
- Front seat heating (heats seat and backrest center panels; with leather upholstery, sport seats and S sport seats also seat side bolsters - individually adjustable in multiple stages for driver and front passenger side via the climate control unit)
- Head-up display (projects speed and other driver-relevant information from optional equipment such as assistance systems and warnings into the driver's direct field of vision - height adjustable - enables high-contrast, multi-colored display with reduced eye strain from the road)
- Headrests: variable headrests for front seats (with manual adjustment of headrest height and distance)
- Illuminated makeup mirror
- Assistance package Tour in conjunction with Business (adaptive cruise control including Stop&Go function - traffic jam assistant - predictive efficiency assistant - Audi pre sense city (standard) - Audi pre sense front - swerve assistant - left turn assistant - camera-based traffic sign recognition - high beam assistant - Audi active lane assist)
- Audi connect Navigation & Infotainment (Online Points of Interest - Online Traffic Information Plus - Hazard Information - Weather Information - Wi-Fi Hotspot - Online News - Navigation with Google Satellite Maps - Online Search for Navigation Destinations - Online Voice Input - Highly Detailed 3D City Display - On-Street Parking - Online Radio - Hybrid Radio - User Profiles - Amazon Alexa Integration - Online Media Streaming - myAudi Navi. - Online Traffic Sign Information. - HoloRide Interface)
- Camera-based traffic sign recognition (Supports the driver by displaying traffic signs detected within the system's limits, such as speed limits, no-overtaking zones, and temporary speed restrictions, which are within the detection range of the front camera. The traffic sign recognition is displayed automatically in the digital instrument cluster or in the optional Audi virtual cockpit.)
- Chrome-plated (smooth) door handles
- Comfort key with sensor-controlled luggage compartment unlocking (including visual differentiation on the top and bottom of the key; access authorization system: the key simply needs to be carried in the vehicle. Starting and stopping the engine via the engine start/stop button in the center console; locking and unlocking the vehicle from the outside via sensors on all door handles. Additionally, a foot gesture (kick movement) below the rear bumper unlocks the luggage compartment lid and opens it automatically, even when the vehicle is locked).
- Deletion of model designation and performance/technology lettering
- Electrically adjustable, heated and folding exterior mirrors, automatically dimming on both sides (including curb view function for passenger-side exterior mirror with integrated LED turn signal, including heated windshield washer nozzles; the curb view function folds the passenger-side mirror down when reverse gear is engaged, giving the driver a better view of the curb edge)
- Front sports seats (with manual adjustment of seat height, seat longitudinal position, seat tilt, backrest tilt, headrest and belt height; with pronounced seat side bolsters for better lateral support in curves, extendable thigh support)
- Glazing: Sun protection glazing, tinted (rear window, rear door and side windows tinted)
- Gloss package (roof frame and window channel strips in anodized aluminum)
- Hold assist (holds the vehicle indefinitely after stopping on typical road inclines and declines. The system is activated by pressing a button and allows the driver to start off comfortably.)
- Paint finish: Metallic



- LED matrix headlights, LED taillights and headlight cleaning system (Matrix LED technology combines a camera system with LED light sources and precise optics for highly adaptive light distribution. In addition to the matrix LED function, the headlights offer the following features: - visually enhanced daytime running lights - low beam - high beam - position lights - dynamic turn signals - cornering lights - all-weather lights - static cornering lights - motorway lights - automatic dynamic headlight range control - coming home/leaving home function)
  - Roof: Electric glass sliding/tilting sunroof (with tinted single-pane safety glass and continuously adjustable sunshade - including integrated wind deflector - comfort closing/opening from the outside via the vehicle key)
  - Seat covers in fabric system (seat center panels in fabric system black or black-red - seat side bolsters, thigh support, headrests in solid black fabric)
  - Seats: 4-way lumbar support (electrically adjustable, horizontally and vertically)
  - Telephone: Audi smartphone interface in conjunction with MMI Navigation plus with MMI touch (The Audi smartphone interface (Android Auto and Apple CarPlay) connects your smartphone to your Audi and seamlessly displays your smartphone content directly on the MMI display. Navigation, telephony, music, and selected third-party apps can be conveniently controlled via the MMI touchscreen and voice control. The connection can be established either using a suitable USB cable or wirelessly.)
  - Wheel: Audi new car tire warranty (36-month term from vehicle handover to the first customer)
- Parking assistant including parking aid plus (automatic steering during parking. Ultrasonic sensors search for suitable parallel or perpendicular parking spaces. For perpendicular spaces, the ideal parking path is calculated; for parallel spaces, the ideal entry and exit paths are calculated. The driver must accelerate, shift gears, and brake, as well as monitor the parking process. The system takes over the steering. The surround view warns of obstacles in front of and behind, and, depending on the steering angle, also of obstacles to the side.)
  - Seats: Rear seat backrest foldable (split in a 40:20:40 ratio or fully foldable - center armrest - including lashing eyes, 4 in the luggage compartment, for securing luggage and objects, attachment points for the luggage compartment net)
  - Steering wheel: Leather steering wheel in a 3-spoke design with multifunction plus (The steering wheel impresses with its high-quality look and aluminum trim and feels good in the hand. Height and reach of the steering wheel are manually adjustable. For convenient operation of the extensive standard and optional infotainment features, the steering wheel is equipped with 12 multifunction buttons. It also includes paddle shifters for manually changing gears with an automatic transmission.)

## Brief expert findings

Documents submitted	At the time of the inspection, the vehicle registration certificate Part 2 (title) was available, but the vehicle registration certificate Part 1 (document) was not. (Copy)
VIN comparison	The vehicle identification number (VIN) was read from the vehicle and its conformity with the submitted documents was confirmed by the undersigned during the inspection.
Inspection	The inspection conditions were sufficient for the assessment of the vehicle. No lifting equipment or pit was available for inspecting the vehicle. Therefore, inspection of the vehicle's underside was only possible to a limited extent.
Test drive	No test drive/shunting maneuver was carried out during the inspection of the vehicle.
Engine function test	An engine test run was performed.



## Value reducing factors

No.	Component group	Description
1	Misc.	Inspection / maintenance (Intervall überzogen) - No deduction
2	Misc.	Main inspection - No evidence - No deduction
3	Roof	Roof rail - left side - Scratch(es) - Smart repair
4	Door - rear left side	Door handle - outside - Scratch(es) - Smart repair
5	Side panel - rear left side	Sill - Scratch(es) - Smart repair
6	Side panel - rear left side	Side panel - Scratch(es) - Smart repair
7	Rear bumper	Rear bumper - Scratch(es) - Smart repair
8	Rear bumper	Spoiler - Scratched - Replace
9	Door - front left side	Door - Dent / paintcoat damage - Repair and paint
10	Front bumper	Front bumper - Deformed - Replace

## Wear and tear

No.	Component group	Description
1	Vehicle glazing	Windscreen - Stone chips - No deduction
2	Bonnet	Bonnet - Stone chips - No deduction

The vehicle shows signs of wear and tear commensurate with its age and use.

## Order/Scope of Order

An order was placed to prepare a sales report for the described vehicle. This report includes the following:

- Description of key vehicle information
- Documentation of equipment features  
*(Delivery by third-party service providers)*
- Documentation of damage, defects, missing parts
- Documentation of prior damage, unrepaired prior damage, repainting
- A brief visual or functional inspection of the equipment details, if possible.  
*(Functional testing of driver assistance systems is not included in the scope of services!)*
- a photographic documentation of the vehicle

## Basis for the order

This product is based on the guidelines for vehicle returns and valuations published by Alphabet Fleet GmbH. The expert makes the specific findings in each individual case objectively, within the framework of the prescribed standards, based on their own expertise.

The vehicle inspection takes place in a fully assembled, unassembled state.

Damage or defects that can only be detected during disassembly/diagnostic work or through further investigation remain within the realm of prognostic risk. An increased risk exists due to concealed defects caused by fraudulent misrepresentation and which were not identifiable by the expert.

Damage or defects resulting from normal use or wear and tear of the vehicle will be accepted in accordance with the applicable standard.

There was no explicit identification or monetary consideration of the expected features within the product.

Features which, in their nature and extent, slightly exceed normal use but do not constitute unacceptable damage, will be documented and indicated as signs of wear, if applicable.

Damage or defects that, according to the applicable standard, can no longer be attributed to normal use or wear and tear are listed under "Value Reducing Factors" in the product description.

Depending on the product specification, a monetary ID can be provided. If this takes place, the costs can be 100% d or pro rata depending on the vehicle's age and mileage.



## Previous damages

No apparent prior damage that had been repaired could be found on the vehicle.

## Comments

- Der Winterradsatz ist kein Bestandteil der Ausstattungsliste.



Figure 1: Diagonal front (left)



Figure 2: Diagonal front (right)



Figure 3: Diagonal rear (left)



Figure 4: Diagonal rear (right)



Figure 5: Interior - front



Figure 6: Interior - rear



Figure 7: Instrument panel



Figure 8: Interior 360° view



Figure 9: Cargo area

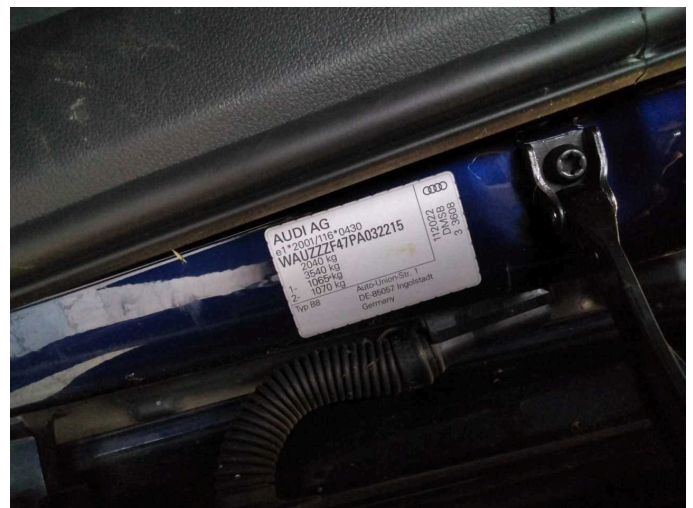


Figure 10: VIN



Figure 11: Mounted tyres

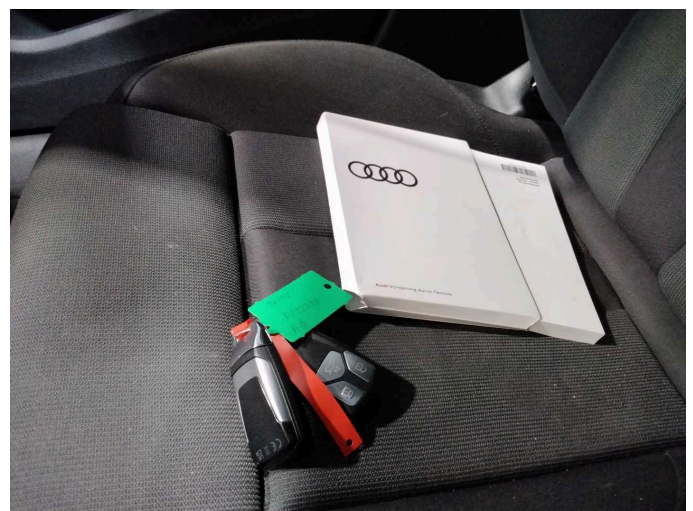


Figure 12: Documents



Figure 13: Additional tyres



Figure 14: Additional tyres



Figure 15: Navigation

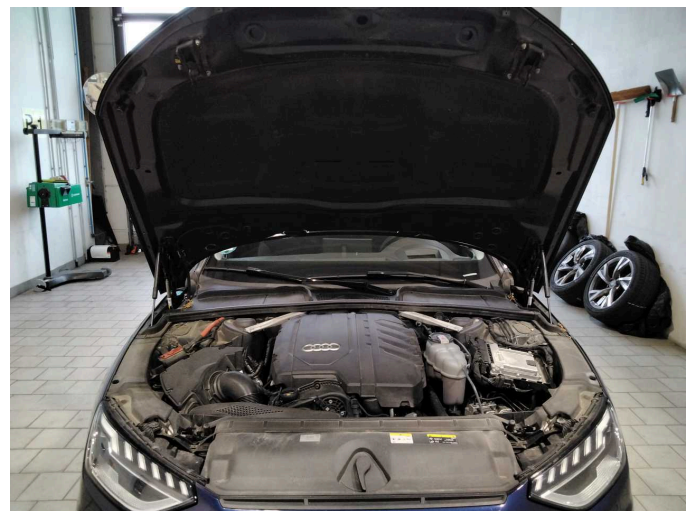


Figure 16: Misc.



Figure 17: Misc.



Figure 18: Misc.

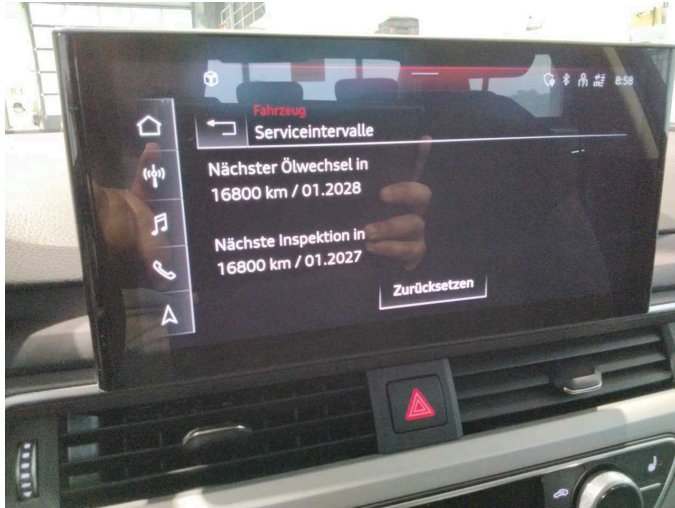


Figure 19: Misc.



Figure 20: Misc.



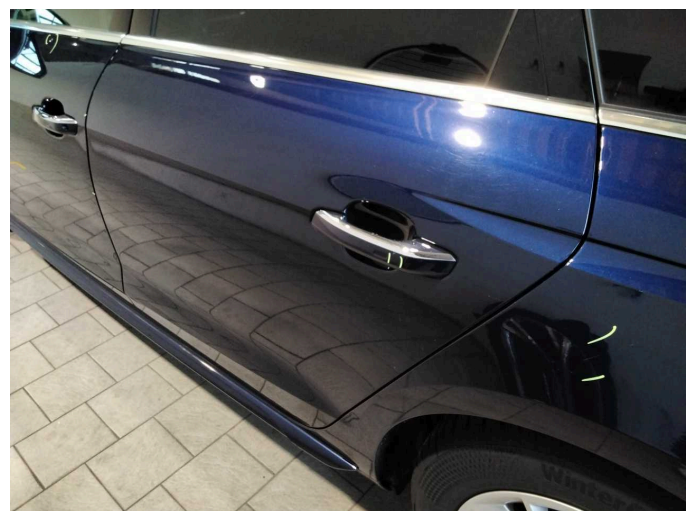
Figure 21: Misc.



Damage 3: Roof: Roof rail - left side - Scratch(es) - Smart repair



Damage 3: Roof: Roof rail - left side - Scratch(es) - Smart repair



Damage 4: Door - rear left side: Door handle - outside - Scratch(es) - Smart repair



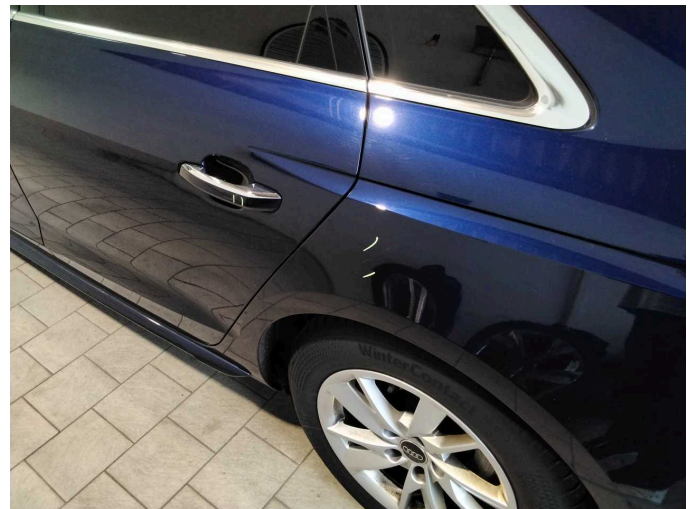
**Damage 4:** Door - rear left side: Door handle - outside - Scratch(es) - Smart repair



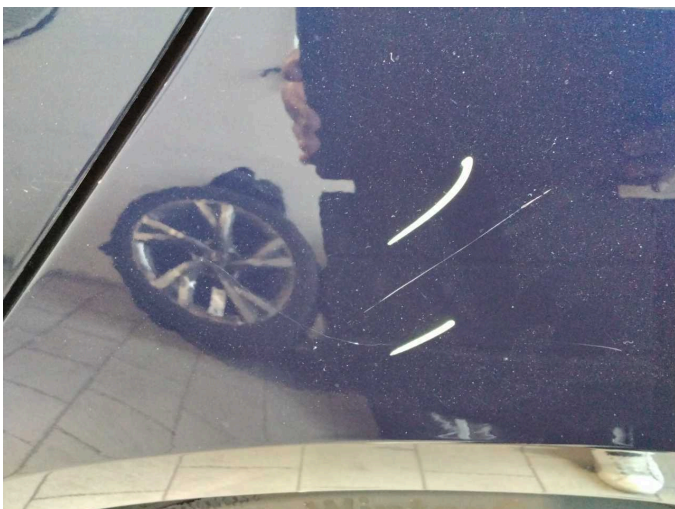
**Damage 5:** Side panel - rear left side: Sill - Scratch(es) - Smart repair



**Damage 5:** Side panel - rear left side: Sill - Scratch(es) - Smart repair



**Damage 6:** Side panel - rear left side: Side panel - Scratch(es) - Smart repair



**Damage 6:** Side panel - rear left side: Side panel - Scratch(es) - Smart repair



**Damage 7:** Rear bumper: Rear bumper - Scratch(es) - Smart repair



**Damage 7:** Rear bumper: Rear bumper - Scratch(es) - Smart repair



**Damage 8:** Rear bumper: Spoiler - Scratched - Replace



**Damage 8:** Rear bumper: Spoiler - Scratched - Replace



**Damage 9:** Door - front left side: Door - Dent / paintcoat damage - Repair and paint



**Damage 9:** Door - front left side: Door - Dent / paintcoat damage - Repair and paint



**Damage 9:** Door - front left side: Door - Dent / paintcoat damage - Repair and paint



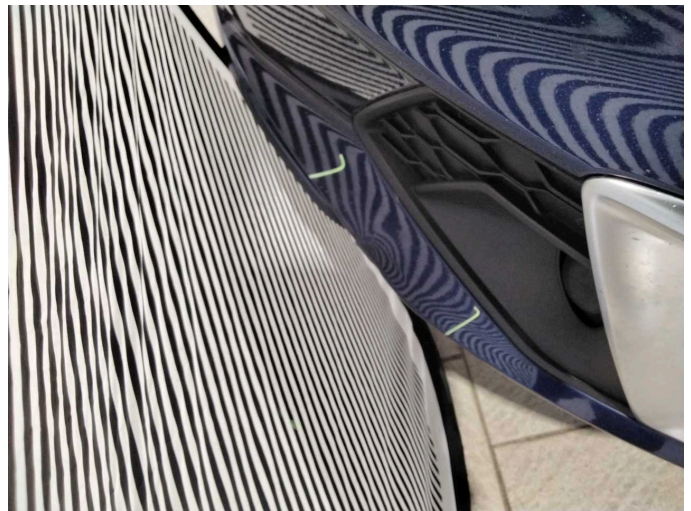
**Damage 9:** Door - front left side: Door - Dent / paintcoat damage - Repair and paint



**Damage 10:** Front bumper: Front bumper - Deformed - Replace



**Damage 10:** Front bumper: Front bumper - Deformed - Replace



**Damage 10:** Front bumper: Front bumper - Deformed - Replace



# Wartungshistorie

(gemäß Auftraggeber Informationen)

Fahrgestellnummer: WAUZZZF47PA032215  
Hersteller / Modell: AUDI AUDI A4 35 TFSI S tronic S line

Datum	KM-Stand	Beschreibung
03.02.2026	121.506	Systemtest/Eigendiagnose
19.01.2026	119.653	Getriebeöl ern/prüfen; Motoröl b. Wartung; Ölfilter ern; Regelwartungsdienst; Wartung Sonstiges; Zündkerzen ern
08.12.2025	114.485	AU; Bremse Sonstiges; Bremsklötze vorne; Bremsscheiben + Klötze v; Bremsscheiben vorne
10.07.2025	93.347	Wartung Sonstiges
26.06.2025	90.611	Keilrippenriemen; Luftfiltereinsatz ern; Motoröl b. Wartung; Ölfilter ern; Regelwartungsdienst; Reparatur Sonstiges; Wartung Sonstiges
22.01.2025	74.097	Bremsflüssigkeit; Bremsflüssigkeit ern
17.09.2024	62.502	Bremsbelagfühler ern; Bremse Sonstiges; Bremsklötze hinten; Bremsklötze vorne; Bremsscheiben hinten; Bremsscheiben vorne; Getriebeöl ern/prüfen; Motoröl b. Wartung; Ölfilter ern; Regelwartungsdienst; Wartung Sonstiges; Zündkerzen ern
03.11.2023	30.557	Bremsbelagfühler ern; Bremse Sonstiges; Bremsklötze hinten; Bremsklötze vorne; Motoröl b. Wartung; Ölfilter ern; Regelwartungsdienst; Wartung Sonstiges