

## Expertise

Protocol number: 46330972  
Order No. / Reference: 26601091  
Inspection date: 6 Jul 2026

Manufacturer: Mercedes-Benz

Model: C 220 d T 9G-TRONIC AMG Line

VIN: W1KAH0EB2PF109788



### Vehicle details

#### Manufacturer / Type / Model / Equipment

Mercedes-Benz C 220 d T 9G-TRONIC AMG Line

**Vehicle Identification number** W1KAH0EB2PF109788

**Mileage (Read)** 96,736 km

**First registration** 25 May 2023

**Number of holders** 1

**Power / Engine displacement** 147 kw / 1,993 ccm

**Fuel type / Cylinder** Hybrid Diesel / E / 4

**Gearbox / Number of gears** Automatic / 9

**Type of drive** Rear drive

**Type of vehicle** Station wagon

**Colour / colour code** Hightechsilber Metallic

**Doors / Seats** 5 / 5

**Upholstery type** Leather

**Colour of upholstery** Grey-Black



## Vehicle details

<b>Maintenance booklet / proof</b>	digital proof / complete	<b>Next maintenance in</b>	116 Tag(e)
<b>Last service on / at</b>	08/2025 at 73,097 km		
<b>Key is / should be</b>	2 / 2	<b>FZG documents</b>	ZB#2 (B) was available (copy), ZB#1 (S) was not available.
		<b>Letter No.</b>	GS712335
<b>Previous damage / Accident</b>	Detectable	<b>Repainting</b>	None detectable
<b>Inspection conditions</b>	sufficient	<b>Lifting equipment / pit</b>	yes
<b>Test drive</b>	Not performed	<b>Engine function test</b>	Performed
<b>Manufacturer key number/ type code number</b>	2222 / AYH 00301		
<b>Emission standard</b>	EURO6;WLTP;AP;PI/CI; M, N1 I	<b>fine dust sticker</b>	
<b>Permitted total weight</b>	2,400 kg	<b>Empty weight</b>	

## Tyres

### Mounted tyres

#	Tyre size	Type of tyre	Manufacturer	Tread depth
1)	225/45 R18 95Y	Summer tyres on Light alloy	Pirelli	4mm / 4mm
2)	245/40 R18 97Y	Summer tyres on Light alloy	Pirelli	4mm / 4mm

### Additional tyres

#	Tyre size	Type of tyre	Manufacturer	Tread depth
1)	225/45 R18 95V	Winter tyres on Light alloy	Pirelli	5mm / 5mm
2)	225/45 R18 95V	Winter tyres on Light alloy	Pirelli	5mm / 5mm

**Legend: Tread depth information for the left tire is listed first, for the right tire it is listed second on the axle in the direction of travel.**



## Equipment

### Standard equipment

- Airbag for driver and front passenger
- Airbag: Center airbag
- Airbag: Windowbag for driver and front passenger
- AMG floor mats
- Left and right exterior mirrors are heated and electrically adjustable
- Brake system with larger brake discs on the front axle
- black roof rails
- Double cup holder at the front
- EASY-PACK tailgate
- Electronic Stability Program (ESP)
- Electric windows (4-way)
- Transmission: 9-speed automatic, 9G-TRONIC
- Heated rear window
- ISOFIX child seat attachment with top tether in the rear
- KEYLESS-GO start function
- Rear headrests (3)
- Cargo area cover including EASY-PACK safety net
- Steering wheel: Multifunction sports steering wheel in Nappa leather
- Package: Interior lighting package
- Radio: MBUX
- Radio accessories: Communication module (LTE) for using Mercedes me connect services
- Remote Services Plus
- Seats: Rear seat backrests foldable
- Cruise control
- Electronic immobilizer
- Airbag: Automatic passenger airbag deactivation
- Airbag: Side airbag for driver and front passenger
- Ambient lighting with 64 light colors
- AMG sports pedal assembly made of brushed stainless steel with rubber studs
- Basic services
- Brake assist, active
- Diesel particulate filter
- DYNAMIC SELECT
- ECO start/stop function
- Chassis: Sport chassis with sport direct steering
- Speed Limit Assistant
- rear window wiper
- Instrument panel and door sills in ARTICO man-made leather in black nappa look
- Mechanical child safety lock for the rear doors
- Front headrests
- LED High Performance Headlights
- Mercedes-Benz emergency call system
- Package: Storage
- Radio: Extended MBUX functions
- Radio accessories: Digital radio (DAB)
- Radio accessories: Central display
- Tire pressure monitoring system (TPMS)
- Windscreen wipers with rain sensor
- Lane Keeping Assist, active
- High-visibility vest for drivers
- Central locking with remote control



## Extra equipment

- Ambient lighting with 64 light colors (with directly illuminated light lines.)
- Chassis: AGILITY CONTROL chassis with selective damping system and lowered suspension
- Head-up display
- KEYLESS-GO (access and driving authorization system)
- THERMATIC automatic climate control with 2 climate zones (control via the central display or the climate control unit in the center console; sensor system for detecting, for example, indoor/outdoor temperature, sunlight, humidity, and dew point; automatic recirculation (only in conjunction with navigation system); ventilation system consisting of: 3 center vents and 2 side vents; fine dust activated carbon filter for filtering dust, soot, and pollen; dew point sensor; residual heat function for efficient use of engine waste heat)
- Package: Driving Assistance (Active Distance Assist DISTRONIC, Active Speed Limit Assist, Extended Automatic Restart on Highways, Route-Based Speed Adaptation with Traffic Jam End Function, Active Traffic Jam Assist, Active Steering Assist, Active Lane Change Assist, Active Emergency Stop Assist, Emergency Lane Function, Active Brake Assist with Vehicle, Bicycle and Pedestrian Detection; Intersection Function, Turn Function, Traffic Jam End Emergency Braking Function, Evasive Steering Assist, Active Lane Keeping Assist, Active Blind Spot Assist, Exit Warning Function)
- Package: High-End Comfort Package (Seat heating for driver and front passenger - Memory Package: Driver and front passenger seats, steering column and exterior mirrors electrically adjustable and storable; Seat longitudinal position and headrest height additionally electrically adjustable; 3 memory settings each for driver and front passenger; 4-way lumbar support for driver and front passenger; Seat cushion depth adjustment with gapless cushion; PRE-SAFE positioning function for the front passenger seat)
- Package: Light (Adaptive Highbeam Assist - automatic switching of the high beams, camera on the inside of the windshield, detects oncoming and preceding illuminated vehicles, activated by pressing the steering wheel control lever to the high beam position)
- Package: Mirror package (both exterior mirrors electrically folding (button in the driver's door control panel) - interior mirror and exterior mirror on the driver's side automatically dimming continuously - ambient lighting of the exterior mirror to illuminate the entry area with projection of the Mercedes-Benz logo)
- Upholstery: ARTICO two-tone imitation leather (including black fabric headliner)
- Radio accessories: Advanced sound system (with 9 speakers and 225 watts system power)
- Wheels: 45.7 cm (18") AMG light-alloy wheels in 5-spoke design (aerodynamically optimized, painted black and high-sheen finish with front axle 225/45 R 18 on 7.5 J x 18 ET 40, rear axle 245/40 R 18 on 8.5 J x 18 ET 52)
- Heat-insulating dark tinted glass
- Decorative elements in diamond pattern, silver-grey
- Illuminated entry sills with Mercedes-Benz lettering
- ENERGIZING AIR CONTROL (Air quality sensor and one fine dust sensor each for indoor and outdoor use - Fine dust filtration with 2 filters - Activated carbon-based indoor air filter with filter layers against fine dust (PM2.5) and nitrogen oxides (NOx) or sulfur dioxides (SO2) as well as pollen - Automatic recirculation or fresh air switching depending on the measured air quality, taking into account the overall climate comfort control system - Air quality menu in the MBUX multimedia system to illustrate the measured values)
- Fuel tank with larger capacity
- Paint finish: Metallic
- Center console diamond pattern silver grey
- Package: Advanced Parking Package (12 ultrasonic sensors - 360° camera - Active Parking Assist with PARKTRONIC: detects free parking spaces, assisted parking, visual and acoustic warning, display of camera and ultrasonic data in the media display - Cross traffic warning: can provide visual and acoustic warnings when reversing out of a parking space and, if necessary, automatically initiate emergency braking - Reverse maneuvering brake: can trigger a braking process - Drive-away assist)
- Package: High-End Business
- Package: High-End Infotainment Package (MBUX Navigation Premium (hard drive navigation, pre-installation for Live Traffic Information), Traffic Sign Assist, Smartphone Integration (connects the mobile phone wirelessly to the multimedia system via Apple CarPlay and Android Auto), Wireless charging system for mobile devices in the front, Driver display - 31.2 cm (12.3") color LCD display, Central display - 30.2 cm (11.9") touch display, MBUX Augmented Reality for navigation.)
- Package: Luggage compartment comfort (electrically folding rear seat backrests via switches on the right and left in the control panel in the load compartment - electric opening and closing of the load compartment roller blind - 12V socket on the left in the control panel in the load compartment - reversible mat, with a rubberized, non-slip side and a soft velour side)
- Package: Night (for T-Model with AMG Line exterior) (Radiator grille: diamond grille with silver pins and high-gloss black louvre (18") AMG light-alloy wheels in 5-spoke design, aerodynamically optimized, black-painted, high-sheen finish, with front axle 225/45 R18 on 7.5Jx18 ET40, rear axle 245/40 R18 on 8Jx18 ET52 AMG front apron with high-gloss black wing trim. Rear bumper with high-gloss black wing trim. Belt trim strip and window surrounds in high-gloss black. Exterior mirror housings in high-gloss black. Heat-insulating dark-tinted rear glass (from the B-pillar). Roof rails in black.)
- Sunroof: Electric panoramic sunroof
- Seats: Sports seats
- Type designation removed from trunk lid
- Heat and noise insulating acoustic glass (for windshield and front doors)



## Brief expert findings

Documents submitted	At the time of the inspection, the vehicle registration certificate Part 2 (title) was available, but the vehicle registration certificate Part 1 (document) was not. (Copy)
VIN comparison	The vehicle identification number (VIN) was read from the vehicle and its conformity with the submitted documents was confirmed by the undersigned during the inspection.
Inspection	The inspection conditions were sufficient for the assessment of the vehicle. Lifting equipment and/or a pit were available for examining the vehicle.
Test drive	No test drive/shunting maneuver was carried out during the inspection of the vehicle.
Engine function test	An engine test run was performed.

## Value reducing factors

No.	Component group	Description
1	Misc.	Main inspection - No evidence - No deduction
2	Sill - left side	Sill - Scratch(es) - Smart repair
3	Front bumper	Cover bumper - front (Rechts) - Missing - Replace
4	Body	Body - Glued / labelled - De-glue / neutralise
5	Interior	Interior (Hundegeuruch) - Odour - Ozone treatment
6	Wheel / tyres	Alloy rim - rear right side - Scratch(es) - Loss in value
7	Wheel / tyres	Alloy rim - front right side - Scratch(es) - Loss in value
8	Side panel - rear right side	Side panel - Dent / paintcoat damage - Repair and paint
9	Rear bumper	Rear bumper - Damaged - repair according to calculation

## Wear and tear

No.	Component group	Description
1	2nd wheel set	2 alloy rims - Scratched - No deduction
2	Bonnet	Bonnet - Stone chips - No deduction
3	Front bumper	Front bumper - Stone chips - No deduction
4	Vehicle glazing	Windscreen - Stone chips - No deduction
5	Door - front right side	Door - Stone chips - No deduction

The vehicle shows signs of wear and tear commensurate with its age and use.

## Previous damages

No.	Previous damage	Extent of damage (Net)
1	Front, Provided by user / customer, from 10 Nov 2025	3.203,75 €
2	Front, Provided by user / customer, from 5 Feb 2025	4.833,75 €

## Accident damages

No.	Accident
1	Side - left



## Order/Scope of Order

An order was placed to prepare a sales report for the described vehicle. This report includes the following:

- Description of key vehicle information
- Documentation of equipment features  
*(Delivery by third-party service providers)*
- Documentation of damage, defects, missing parts
- Documentation of prior damage, unrepaired prior damage, repainting
- A brief visual or functional inspection of the equipment details, if possible.  
*(Functional testing of driver assistance systems is not included in the scope of services!)*
- a photographic documentation of the vehicle

## Basis for the order

This product is based on the guidelines for vehicle returns and valuations published by Alphabet Fleet GmbH. The expert makes the specific findings in each individual case objectively, within the framework of the prescribed standards, based on their own expertise.

The vehicle inspection takes place in a fully assembled, unassembled state.

Damage or defects that can only be detected during disassembly/diagnostic work or through further investigation remain within the realm of prognostic risk. An increased risk exists due to concealed defects caused by fraudulent misrepresentation and which were not identifiable by the expert.

Damage or defects resulting from normal use or wear and tear of the vehicle will be accepted in accordance with the applicable standard.

There was no explicit identification or monetary consideration of the expected features within the product.

Features which, in their nature and extent, slightly exceed normal use but do not constitute unacceptable damage, will be documented and indicated as signs of wear, if applicable.

Damage or defects that, according to the applicable standard, can no longer be attributed to normal use or wear and tear are listed under "Value Reducing Factors" in the product description.

Depending on the product specification, a monetary ID can be provided. If this takes place, the costs can be 100% d or pro rata depending on the vehicle's age and mileage.

## Previous damages

Non-repaired previous damages were found at the vehicle. The necessary repair costs are listed in the expert report or if necessary, are listed in detail in a separately enclosed repair cost calculation.

## Comments

Wartungshistorie gemäß Auftraggeber Informationen.

Die beigefügte Reparaturkostenkalkulation wurde nach bestem Wissen und Gewissen unter eingeschränkten Besichtigungsbedingung im demontagefreien Zustand erstellt. Es können aufgrund verdeckter Beschädigung erhebliche Mehrkosten und somit Abweichung der für den Unfall ausgewiesenen Reparaturkosten nicht ausgeschlossen werden.



Figure 1: Diagonal front (left)



Figure 2: Diagonal front (right)



Figure 3: Diagonal rear (left)



Figure 4: Diagonal rear (right)

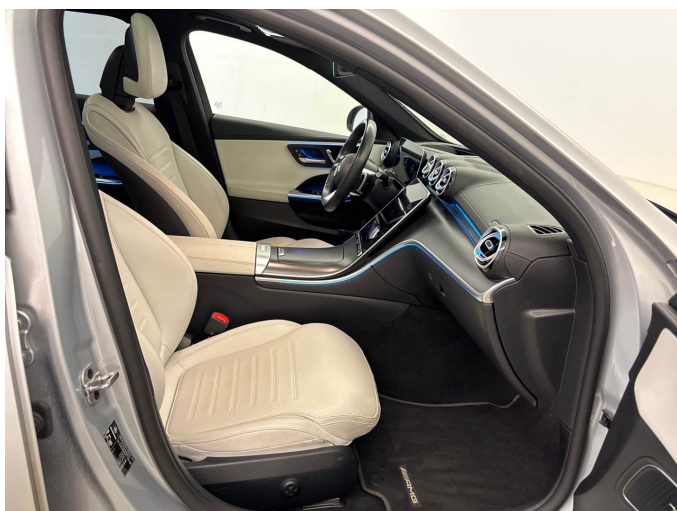


Figure 5: Interior - front



Figure 6: Interior - rear



Figure 7: Instrument cluster



Figure 8: Instrument panel



Figure 9: Interior 360° view



Figure 10: Cargo area



Figure 11: VIN



Figure 12: Mounted tyres



Figure 13: Documents



Figure 14: Additional tyres

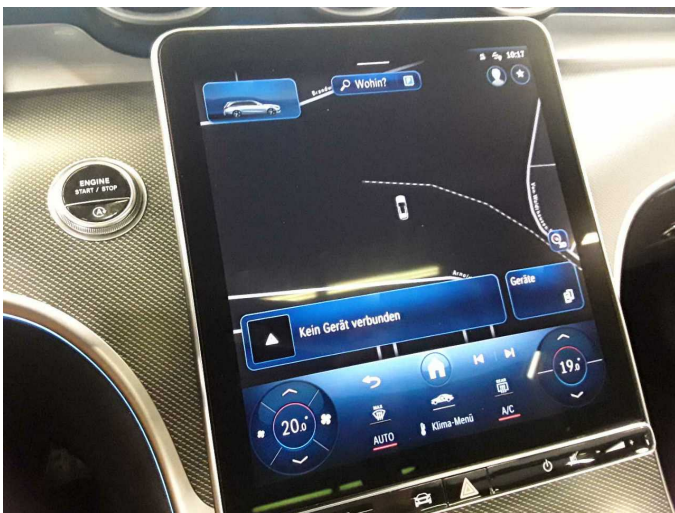


Figure 15: Navigation



Figure 16: Misc.



Figure 17: Misc.



Figure 18: Misc.



Figure 19: Misc.



Figure 20: Misc.



Figure 21: Misc.



Figure 22: Misc.



Figure 23: Misc.



Figure 24: Misc.



Figure 25: Misc.



Figure 26: Misc.



Figure 27: Misc.



Figure 28: Misc.



Figure 29: Misc.



Figure 30: Misc.



Figure 31: Misc.



Figure 32: Misc.

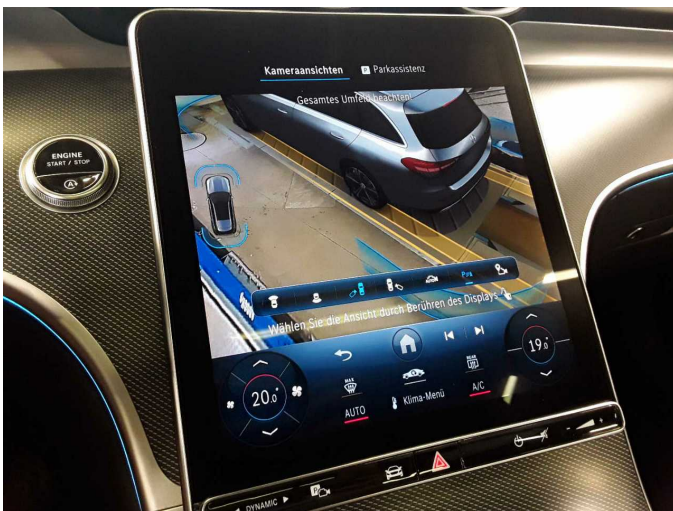


Figure 33: Misc.

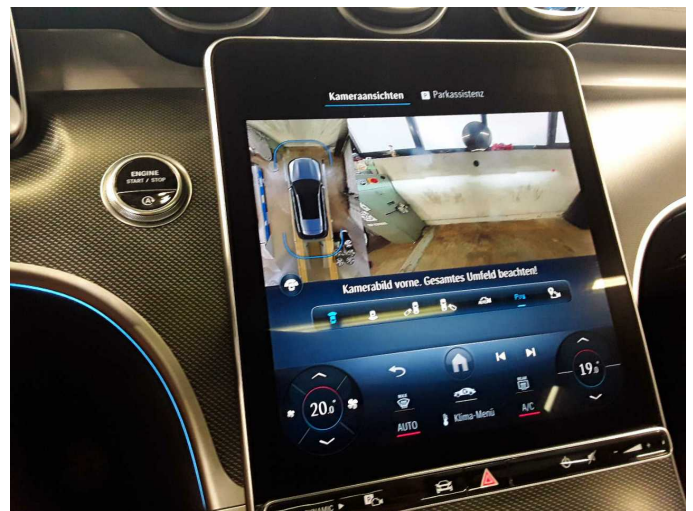


Figure 34: Misc.

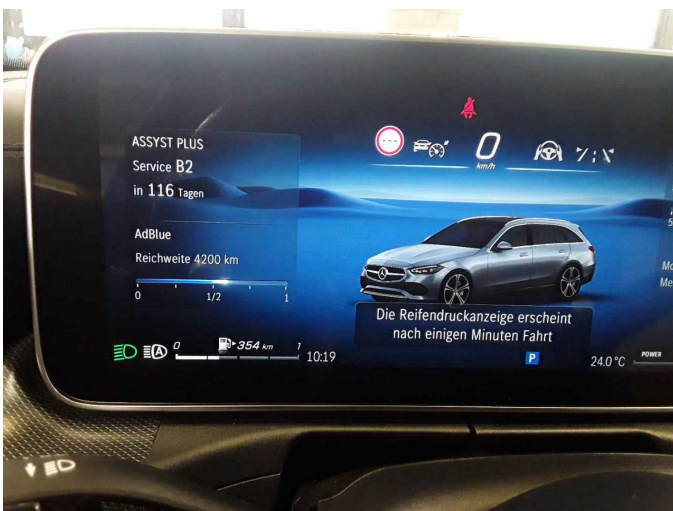


Figure 35: Misc.



Damage 2: Sill - left side: Sill - Scratch(es) - Smart repair



**Damage 2:** Sill - left side: Sill - Scratch(es) - Smart repair



**Damage 3:** Front bumper: Cover bumper - front (Rechts) - Missing - Replace



**Damage 3:** Front bumper: Cover bumper - front (Rechts) - Missing - Replace



**Damage 4:** Body: Body - Glued / labelled - De-glue / neutralise



**Damage 4:** Body: Body - Glued / labelled - De-glue / neutralise



**Damage 6:** Wheel / tyres: Alloy rim - rear right side - Scratch(es) - Loss in value



**Damage 6:** Wheel / tyres: Alloy rim - rear right side - Scratch(es) - Loss in value



**Damage 7:** Wheel / tyres: Alloy rim - front right side - Scratch(es) - Loss in value



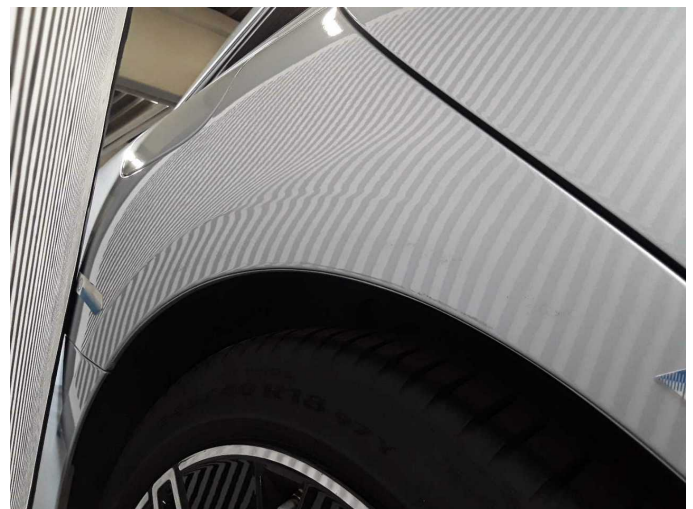
**Damage 7:** Wheel / tyres: Alloy rim - front right side - Scratch(es) - Loss in value



**Damage 8:** Side panel - rear right side: Side panel - Dent / paintcoat damage - Repair and paint



**Damage 8:** Side panel - rear right side: Side panel - Dent / paintcoat damage - Repair and paint



**Damage 8:** Side panel - rear right side: Side panel - Dent / paintcoat damage - Repair and paint



**Damage 8:** Side panel - rear right side: Side panel - Dent / paintcoat damage - Repair and paint



**Damage 9:** Rear bumper: Rear bumper - Damaged - repair according to calculation



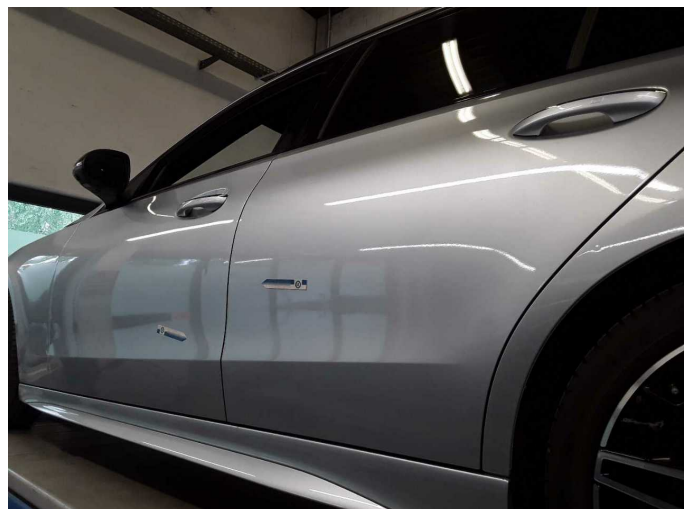
**Damage 9:** Rear bumper: Rear bumper - Damaged - repair according to calculation



**Damage 9:** Rear bumper: Rear bumper - Damaged - repair according to calculation



**Damage 9:** Rear bumper: Rear bumper - Damaged - repair according to calculation



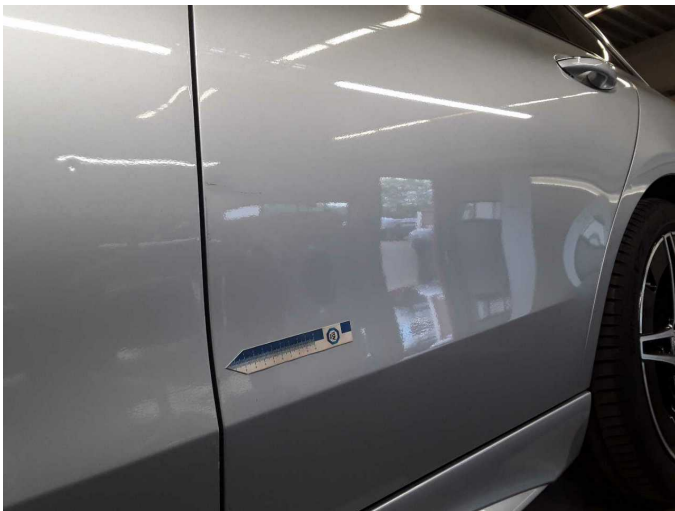
**Accident 1:** Side - left



Accident 1: Side - left



Accident 1: Side - left



Accident 1: Side - left



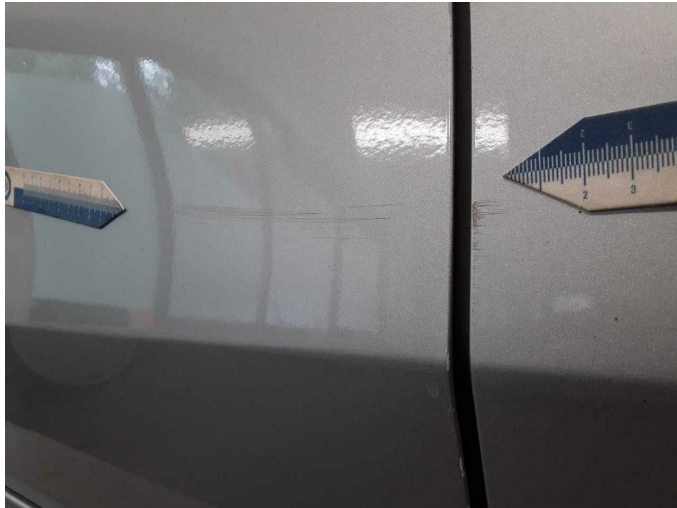
Accident 1: Side - left



Accident 1: Side - left



Accident 1: Side - left



**Accident 1: Side - left**



# Wartungshistorie

(gemäß Auftraggeber Informationen)

Fahrgestellnummer: W1KAH0EB2PF109788

Hersteller / Modell: MERCEDES-BENZ MERCEDES-BENZ C 220 d T 9G-TRONIC  
AMG Line

Datum	KM-Stand	Beschreibung
29.08.2025	73.097	Bremsscheiben vorne; Regelwartungsdienst
28.10.2024	48.641	Regelwartungsdienst
04.01.2024	24.516	Regelwartungsdienst