

Expertise

Protocol number: 46179709
Order No. / Reference: 26476101
Inspection date: 26 Jun 2026

Manufacturer: Volkswagen

Model: ID.4 GTX

VIN: WVGZZZE2ZPE038517



Vehicle details

Manufacturer / Type / Model / Equipment

Volkswagen ID.4 GTX

Vehicle Identification number WVGZZZE2ZPE038517

Mileage (Read) 71,666 km

First registration 6 Jun 2023

Number of holders 1

Next periodical technical inspection 06/2026
(Report not on hand)

Power / Engine displacement 77 kw /

Fuel type / Cylinder Electric / 0

Gearbox / Number of gears Direct drive / 1

Type of drive All-wheel drive

Type of vehicle SUV

Colour / colour code Mondsteingrau/ Dach
Schwarz -

Doors / Seats 5 / 5

Upholstery type Cloth

Colour of upholstery Black-Anthracite



Vehicle details

Maintenance booklet / proof	digital proof / complete	Next maintenance in	336 Tag(e)
Last service on / at	12/2025 at 60,866 km		
Key is / should be	2 / 2	FZG documents	ZB#2 (B) was available (copy), ZB#1 (S) was not available.
		Letter No.	GS436773
Previous damage / Accident	None detectable	Repainting	None detectable
Inspection conditions	sufficient	Lifting equipment / pit	yes
Test drive	Not performed	Engine function test	Performed
Manufacturer key number/ type code number	0603 / CLR 00025		
Emission standard	2017/1151;WLTP;reine Elektrofz	fine dust sticker	
Permitted total weight	2,750 kg	Empty weight	

Tyres

Mounted tyres

#	Tyre size	Type of tyre	Manufacturer	Tread depth
1)	235/50 R20 100T	Summer tyres on Light alloy	Bridgestone	4mm / 4mm
2)	255/45 R20 101T	Summer tyres on Light alloy	Bridgestone	4mm / 4mm

Additional tyres

#	Tyre size	Type of tyre	Manufacturer	Tread depth
1)	235/45 R19 101T	Winter tyres on Light alloy	Bridgestone	5mm / 5mm
2)	255/50 R19 103T	Winter tyres on Light alloy	Bridgestone	5mm / 5mm

Legend: Tread depth information for the left tire is listed first, for the right tire it is listed second on the axle in the direction of travel.



Equipment

Standard equipment

- 2 USB-C ports at the front, 2 USB-C charging ports at the rear of the center console
- Airbags: Front and rear head airbags, front side airbags, center airbag
- 30-color ambient lighting
- Adaptive Cruise Control (ACC) "stop & go" including speed limiter
- Car2X
- e-Sound
- Parking assistance
- ESP Electronic Stability Program
- Dynamic high beam control "Dynamic Light Assist" for LED matrix headlights
- Back window, heater
- Infotainment accessories: Online update capability from ID.Software 2.1
- Air conditioning system "Air Care Climatronic"
- Paint finish: Solid color, with differing roof color
- Charging: 11 kW AC charging power (alternating current)
- LED matrix headlights - IQ.LIGHT
- The strip between the headlights is illuminated.
- Makeup mirrors in the sun visors
- Variable center console
- Emergency braking assistant "Front Assist" with pedestrian and cyclist detection
- Upholstery: Seat center panels of the front seats and the outer rear seats in "GTX" fabric
- Radio accessories: Digital radio reception DAB+
- Tire pressure monitoring system
- LED taillights: 3D LED taillights with dynamic turn signals
- Windows: Rear side windows and rear window tinted
- Keyless Start system
- Seat belts: Three-point automatic seat belts at the front with height adjustment and belt tensioner
- Seats: Heated front seats
- Seats: Front seats with height adjustment
- Lane keeping assistant "Lane Assist"
- Telephone interface
- Ambient lighting with logo projection
- Traffic sign recognition
- Electronic immobilizer
- Central locking including remote control
- Turning brake function and evasive steering support
- Airbag for driver and front passenger, with front passenger airbag deactivation
- Permanent 4MOTION all-wheel drive
- App-Connect Wireless for Apple CarPlay and Android Auto
- Electrically adjustable, folding and heated exterior mirrors
- third brake light
- black roof rails
- Black surround for the infotainment display and central controls
- Driving profile selection
- Windscreen made of laminated safety glass
- Transmission: 1-speed automatic
- rear window wiper
- Interior mirror automatically dimming
- ISOFIX mounting points for child car seats
- Front and rear headrests (5)
- Mode 3 Type 2 charging cable, 16 A
- Charging: Maximum DC charging power depends on the traction battery.
- Steering wheel: Multifunction leather steering wheel, heated, with touch controls
- Fatigue detection
- Emergency call service
- Stainless steel pedals in a "Play/Pause" design
- Radio "Ready 2 Discover"
- Radio accessories: 6 + 1 speakers
- Rain sensor
- Wheels: "Ystad" alloy wheels 8 J x 20 front, 9 J x 20 rear, in black, polished finish
- Front windshield washer nozzles automatically heated
- electromechanical power steering
- Seats: Armrest for front seats
- Seats: Rear seat backrest asymmetrically split and foldable, with pass-through and center armrest
- Voice control
- Bumpers in a sporty design
- Engine underguard
- First aid kit, warning triangle and high-visibility vest
- Prepared for later activation: "Discover Pro" navigation function

Extra equipment

- Folding towbar 1M6
- Package: Assistance Package "Plus" WD4
- Package: Infotainment Package "Plus" RD5
- Hamar winter wheels 8Jx19 Dark Graphite/gl 2WX
- Mains charging cable for household socket EV3
- Package: Design Package PA2
- Package: Comfort Package PBM
- Heat pump for range optimization WPW



Brief expert findings

Documents submitted	At the time of the inspection, the vehicle registration certificate Part 2 (title) was available, but the vehicle registration certificate Part 1 (document) was not. (Copy)
VIN comparison	The vehicle identification number (VIN) was read from the vehicle and its conformity with the submitted documents was confirmed by the undersigned during the inspection.
Inspection	The inspection conditions were sufficient for the assessment of the vehicle. Lifting equipment and/or a pit were available for examining the vehicle.
Test drive	No test drive/shunting maneuver was carried out during the inspection of the vehicle.
Engine function test	An engine test run was performed.

Value reducing factors

No.	Component group	Description
1	Roof	Roof - dent(s) - Smooth repair work
2	Front bumper	Front bumper - Scratch(es) - Smart repair
3	Bonnet	Bonnet - Dent / paintcoat damage - Repair and paint

Wear and tear

No.	Component group	Description
1	Vehicle glazing	Windscreen - Stone chips - No deduction
2	Wheel / tyres	Alloy rim - front left side - Scratch(es) - No deduction

The vehicle shows signs of wear and tear commensurate with its age and use.

Order/Scope of Order

An order was placed to prepare a sales report for the described vehicle. This report includes the following:

- Description of key vehicle information
- Documentation of equipment features
(Delivery by third-party service providers)
- Documentation of damage, defects, missing parts
- Documentation of prior damage, unrepaired prior damage, repainting
- A brief visual or functional inspection of the equipment details, if possible.
(Functional testing of driver assistance systems is not included in the scope of services!)
- a photographic documentation of the vehicle



Basis for the order

This product is based on the guidelines for vehicle returns and valuations published by Alphabet Fleet GmbH. The expert makes the specific findings in each individual case objectively, within the framework of the prescribed standards, based on their own expertise.

The vehicle inspection takes place in a fully assembled, unassembled state.

Damage or defects that can only be detected during disassembly/diagnostic work or through further investigation remain within the realm of prognostic risk. An increased risk exists due to concealed defects caused by fraudulent misrepresentation and which were not identifiable by the expert.

Damage or defects resulting from normal use or wear and tear of the vehicle will be accepted in accordance with the applicable standard.

There was no explicit identification or monetary consideration of the expected features within the product.

Features which, in their nature and extent, slightly exceed normal use but do not constitute unacceptable damage, will be documented and indicated as signs of wear, if applicable.

Damage or defects that, according to the applicable standard, can no longer be attributed to normal use or wear and tear are listed under "Value Reducing Factors" in the product description.

Depending on the product specification, a monetary ID can be provided. If this takes place, the costs can be 100% d or pro rata depending on the vehicle's age and mileage.

Previous damages

No apparent prior damage that had been repaired could be found on the vehicle.



Figure 1: Diagonal front (left)



Figure 2: Diagonal front (right)



Figure 3: Diagonal rear (left)



Figure 4: Diagonal rear (right)



Figure 5: Interior - front

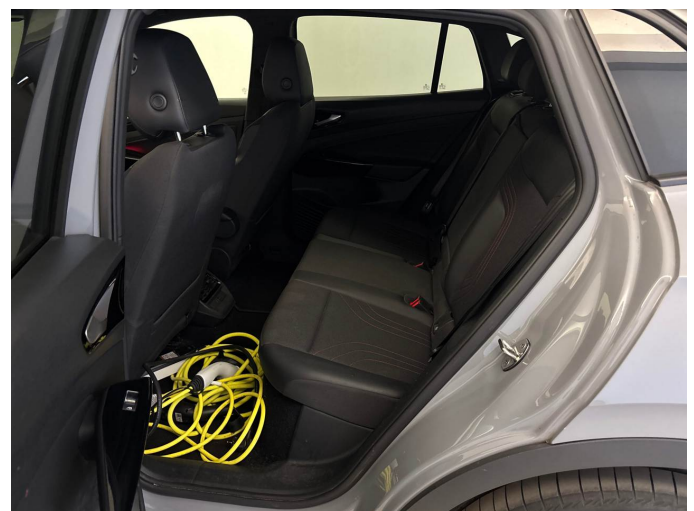


Figure 6: Interior - rear



Figure 7: Instrument cluster



Figure 8: Instrument panel



Figure 9: Interior 360° view



Figure 10: Cargo area



Figure 11: Cargo area

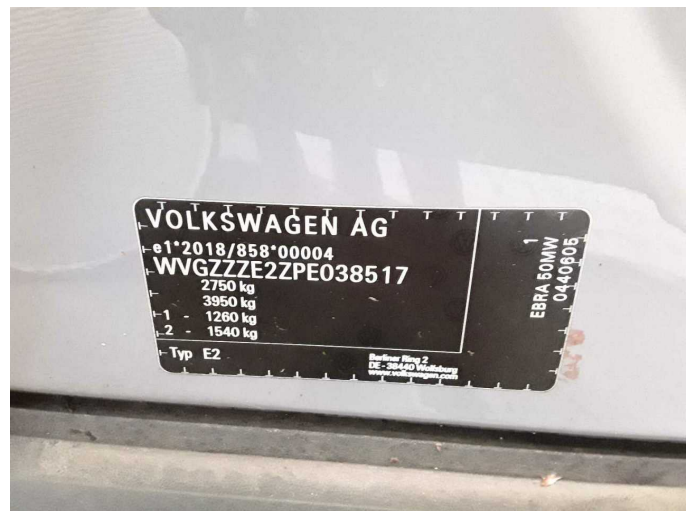


Figure 12: VIN



Figure 13: Mounted tyres



Figure 14: Documents



Figure 15: Additional tyres



Figure 16: Navigation



Figure 17: Misc.

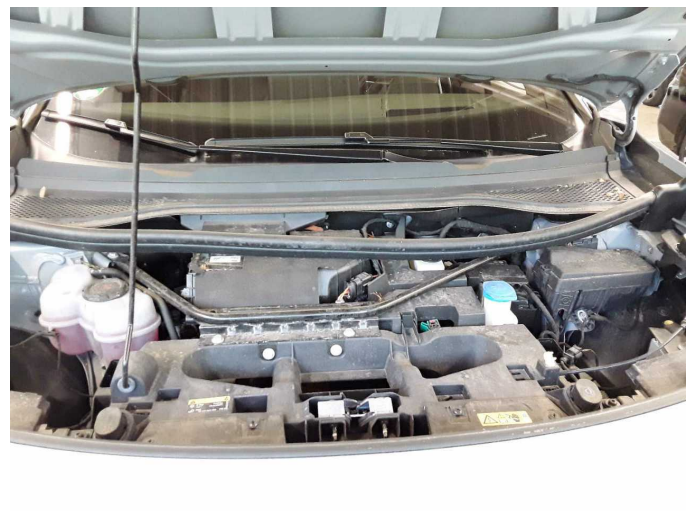


Figure 18: Misc.



Figure 19: Misc.



Figure 20: Misc.



Figure 21: Misc.



Figure 22: Misc.



Figure 23: Misc.

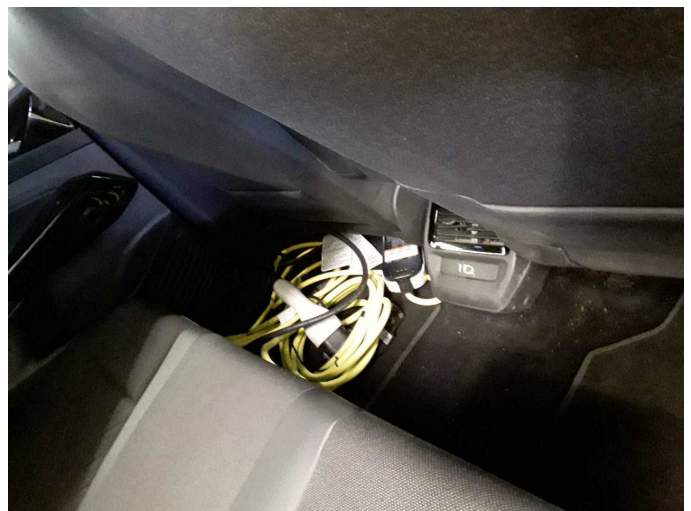


Figure 24: Misc.



Figure 25: Misc.



Figure 26: Misc.

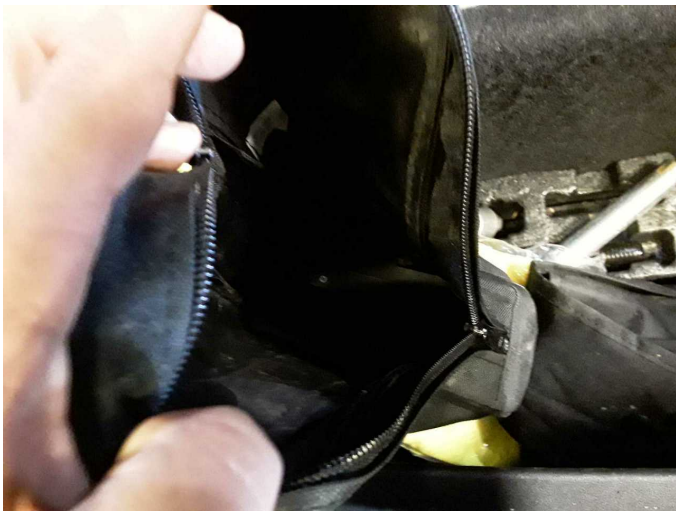


Figure 27: Misc.



Figure 28: Misc.

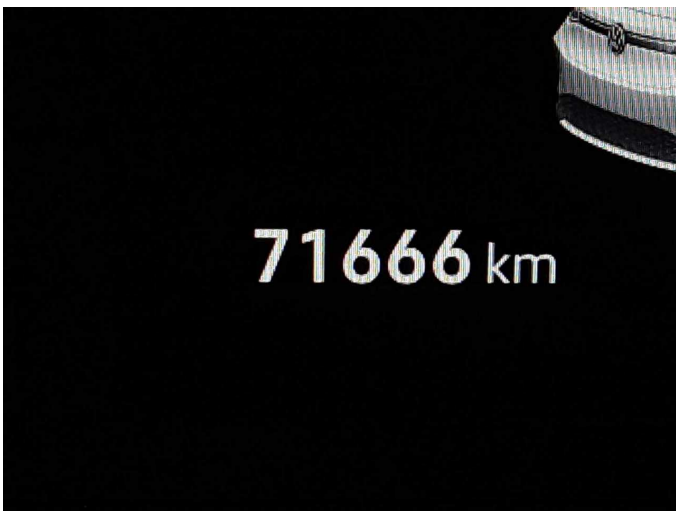


Figure 29: Misc.

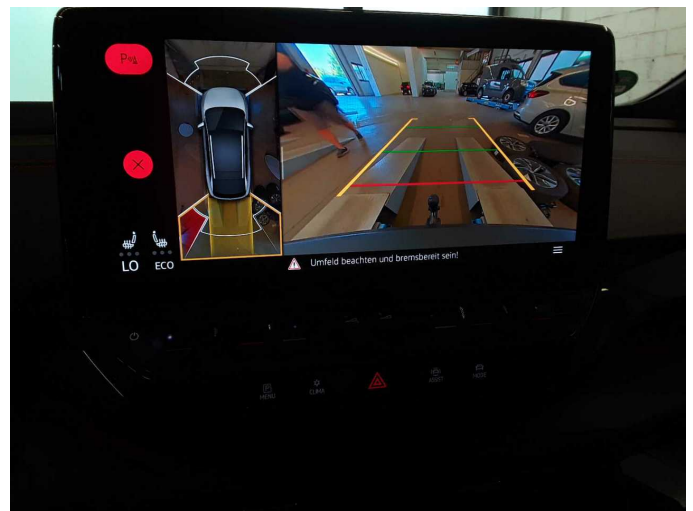


Figure 30: Misc.

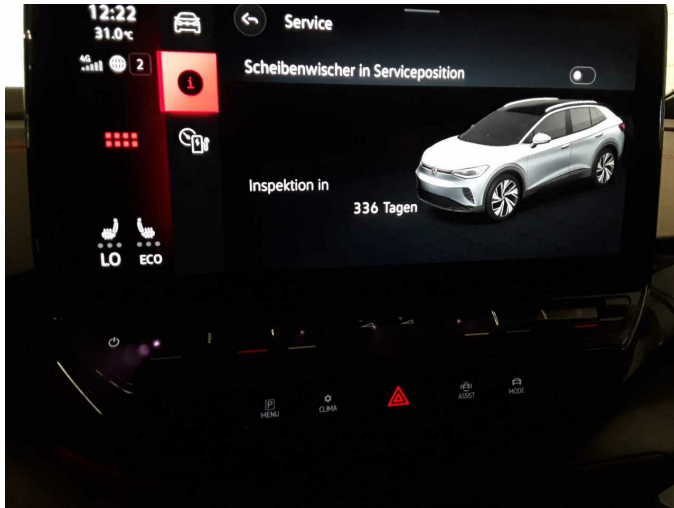
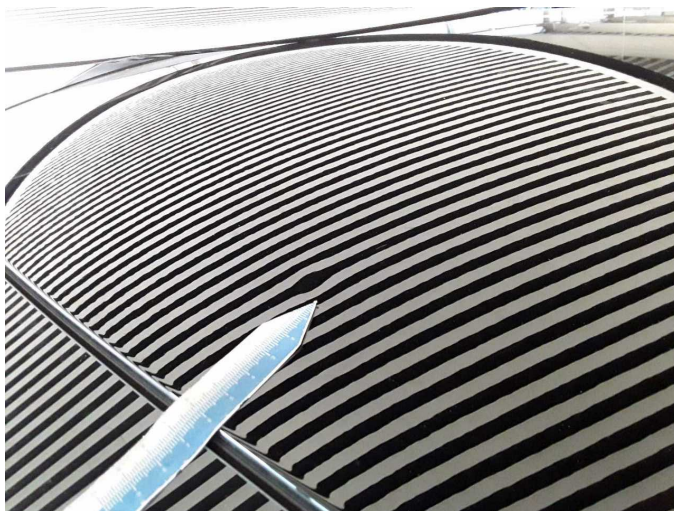


Figure 31: Misc.



Damage 1: Roof: Roof - dent(s) - Smooth repair work



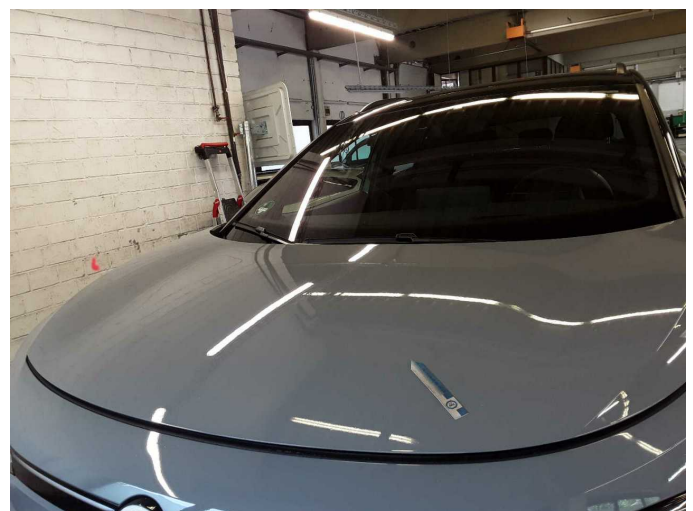
Damage 1: Roof: Roof - dent(s) - Smooth repair work



Damage 2: Front bumper: Front bumper - Scratch(es) - Smart repair



Damage 2: Front bumper: Front bumper - Scratch(es) - Smart repair



Damage 3: Bonnet: Bonnet - Dent / paintcoat damage - Repair and paint



Damage 3: Bonnet: Bonnet - Dent / paintcoat damage - Repair and paint



Damage 3: Bonnet: Bonnet - Dent / paintcoat damage - Repair and paint



Damage 3: Bonnet: Bonnet - Dent / paintcoat damage - Repair and paint



Wear and tear 1: Vehicle glazing: Windscreen - Stone chips - No deduction



Wear and tear 1: Vehicle glazing: Windscreen - Stone chips - No deduction



Wear and tear 2: Wheel / tyres: Alloy rim - front left side - Scratch(es) - No deduction



Wear and tear 2: Wheel / tyres: Alloy rim - front left side - Scratch(es) -
No deduction



Wartungshistorie

(gemäß Auftraggeber Informationen)

Fahrgestellnummer: WVGZZZE2ZPE038517

Hersteller / Modell: VOLKSWAGEN VW ID.4 GTX

Datum	KM-Stand	Beschreibung
02.12.2025	60.866	Reparatur Sonstiges; Systemtest/Eigendiagnose
28.05.2025	48.850	Bremsflüssigkeit; Regelwartungsdienst