

Expertise

Protocol number: 46015774
Order No. / Reference: 26451786
Inspection date: 16 Jun 2026

Manufacturer: Opel

Model: Vivaro 2.0 D Cargo L EHZ Autm. Elegance

VIN: VXEVFEHZ7N7022942



Vehicle details

Manufacturer / Type / Model / Equipment

Opel Vivaro 2.0 D Cargo L EHZ Autm. Elegance

Vehicle Identification number VXEVFEHZ7N7022942

Mileage (Read) 101,824 km

First registration 7 Jun 2022

Number of holders 1

Power / Engine displacement 130 kw / 1,997 ccm

Fuel type / Cylinder Diesel / 4

Gearbox / Number of gears Automatic / 8

Type of drive Front drive

Type of vehicle Van

Colour / colour code Jade Weiß

Doors / Seats 4 / 3

Upholstery type Cloth

Colour of upholstery Black-Grey



Vehicle details

Maintenance booklet / proof	digital proof / complete	Next maintenance in	44,920 km
Last service on / at	04/2026 at 100,755 km		
Key is / should be	1 / 2	FZG documents	ZB#2 (B) was available (copy), ZB#1 (S) was not available.
		Letter No.	GJ677796
Previous damage / Accident	None detectable	Repainting	None detectable
Inspection conditions	sufficient	Lifting equipment / pit	yes
Test drive	Not performed	Engine function test	Performed
Manufacturer key number/ type code number	3003 / AXZ 01163		
Emission standard	EURO6;WLTP;AR;PI/CI;N1 III, N2	fine dust sticker	
Permitted total weight	3,100 kg	Empty weight	

Tyres

Mounted tyres

#	Tyre size	Type of tyre	Manufacturer	Tread depth
1)	215/65 R16 106T	Summer tyres on Steel	Continental	8mm / 8mm
2)	215/65 R16 109T	Winter tyres on Steel	Bridgestone	4mm / 4mm

Additional tyres

#	Tyre size	Type of tyre	Manufacturer	Tread depth
1)	215/65 R16 106T	Winter tyres on Steel	Michelin	6mm / 6mm
2)	215/65 R16 106T	Winter tyres on Steel	Michelin	7mm / 7mm

Replacement

Typ	Tyre size	Type of tyre	Manufacturer	Tread depth
	Tirefit	Expiration date 02/2026		

Legend: Tread depth information for the left tire is listed first, for the right tire it is listed second on the axle in the direction of travel.



Equipment

Standard equipment

- Storage compartments
- Driver and passenger side airbags
- Exterior mirrors, electrically folding, heated and adjustable
- Exterior mirror housings in black
- Hill Start Assist
- On-board computer
- Diesel particulate filter, maintenance-free
- Three-point seat belts in all seats
- Electronic Stability Program (ESP Plus)
- Speed controller and limiter
- Grab handle in the first row of seats, passenger side
- Air conditioning, front with particle and odor filter
- Steering column, adjustable for reach and height
- Fatigue detection level 1 coffee break
- Package: Driver Assistance Package 1
- Radio: Multimedia radio with 7" touchscreen color display
- Wheels: Tire repair kit
- Wheels: Steel wheels 7 J x 16 with wheel hub cover
- Side protection strips
- Visibility equipment
- Sun visors, driver and passenger
- 12V power outlet in the cargo area and in the lower glove compartment
- Partition wall: closed, without windows
- Doors: Rear wing doors, sheet metal with a 180° opening angle
- Electronic immobilizer
- Central locking with remote control
- Ignition key (2), foldable

Extra equipment

- Paint finish: Solid color paint
- Package: Design package (front and rear bumpers in body color - door handles in body color - exterior mirror housings in black - exterior mirrors, electrically adjustable, heated and folding - side protection strip in body color - fog lights - LED daytime running lights)
- 180° panoramic reversing camera (displays the area behind the vehicle up to 180 degrees, including steering guidelines, when reverse gear is engaged, in the color display of the infotainment system.)
- Seats: Comfort driver's seat and multifunctional double passenger seat (comfort driver's seat adjustable in 6 ways, with armrest and lumbar support - multifunctional double passenger seat with pass-through function and DIN A4 desk - headrests, height adjustable)
- Partition wall: closed with window (FlexCargo function)
- Doors: Rear wing doors, glazed with a 180° opening angle (and heated rear window wipers)

Retrofitted equipment

- Sortimo complete installation

- ABS including brake assist and adaptive brake light
- Anti-lock braking system (ABS) with cornering brake control and brake assist
- Battery discharge protection
- Floor covering: Cargo area floor, painted
- third brake light
- Tachometer
- Electric parking brake
- Electric front windows
- Transmission: 8-speed automatic
- Glove compartment closed at the top
- Steering wheel: Comfort steering wheel (PU), flattened at the bottom
- Fog light
- Parkpilot, front and rear parking aid
- Radio accessories: Digital radio reception DAB+ (Digital Audio Broadcasting)
- Side impact protection
- Speed-sensitive power steering
- Seats: Comfort driver's seat and double passenger seat
- 12-volt power outlet in the center console
- Daytime running light
- Traction control with engine and brake intervention (TC Plus)
- Doors: Sliding door, passenger side
- Lashing eyes (8) in the cargo area
- Heat-insulating glazing, tinted
- Payload increased by +300 kg

- Steering wheel: Multifunction leather steering wheel
- Upholstery: Fabric / faux leather with grey dashboard underside
- Radio: Multimedia Navi Pro with 7" color touchscreen display and voice control for audio, telephone and navigation (automatic music recognition (title, album, artist, cover) for audio devices with USB connection, Bluetooth audio streaming, hands-free calling via Bluetooth interface, up to 10 mobile phones can be paired, image display via USB interface, navigation system with integrated memory, OpelConnect with telematics services, map of Europe, 3D map display, TMC GPS module, smartphone integration via Apple CarPlay and Android Auto, 1 USB interface, dual tuner, graphic equalizer)
- Heated seats for driver and front passenger (in conjunction with double passenger seat, the middle seat is not heated - side and head airbags, 1st row of seats)



Brief expert findings

Documents submitted	At the time of the inspection, the vehicle registration certificate Part 2 (title) was available, but the vehicle registration certificate Part 1 (document) was not. (Copy)
VIN comparison	The vehicle identification number (VIN) was read from the vehicle and its conformity with the submitted documents was confirmed by the undersigned during the inspection.
Inspection	The inspection conditions were sufficient for the assessment of the vehicle. Lifting equipment and/or a pit were available for examining the vehicle.
Test drive	No test drive/shunting maneuver was carried out during the inspection of the vehicle.
Engine function test	An engine test run was performed.

Value reducing factors

No.	Component group	Description
1	Misc.	Main inspection - No evidence - No deduction
2	Roof	Stub aerial - Broken / torn - Replace
3	Equipment	Tirefit filler - Expired - Replace
4	Door - front right side	Door seal - Loose - Un- / install
5	Trim / covers	Trim / covers - Loose - Un- / install
6	Screen cleaning	Wiper blades - front - Missing - Replace
7	Side panel - rear right side	Side panel - dent(s) - Smooth repair work
8	Seat - front	Seat cover - left side - Scratch(es) - Smart repair
9	Door - front right side	Door - Scratch(es) - Smart repair
10	Rear bumper	Bumper - rear right side - Scratch(es) - Smart repair
11	Door - front left side	Door - Scratch(es) - Smart repair
12	Engine	Engine - Leaking - Perform diagnosis
13	Sliding door, right	Door seal - Broken / torn - Replace
14	Sill - left side	Sill - dent(s) - Smart repair
15	Engine	Engine cover - Damage caused by marten / rodent - Replace
16	Door - rear right side	Brightware - lower - Scratch(es) - Paint
17	Trim / covers	Door trim - rear right side - Broken / torn - Replace
18	Front bumper	Front bumper - Broken / torn - repair according to calculation

Wear and tear

No.	Component group	Description
1	Rear bumper	Rear bumper (unpainted) - Scratch(es) - No deduction
2	Bonnet	Bonnet - Stone chips - No deduction
3	Roof	Roof - dent(s) - No deduction
4	Vehicle glazing	Windscreen - Stone chips - No deduction
5	Body	Body (Klebereste) - Glued / labelled - No deduction
6	Wheel / tyres	Tyre - right - Differs from the original configuration - No deduction

The vehicle shows signs of wear and tear commensurate with its age and use.

Missing parts

Description

Wheel / tyres - Wheel cover set - complete

Equipment - Vehicle key



Order/Scope of Order

An order was placed to prepare a sales report for the described vehicle. This report includes the following:

- Description of key vehicle information
- Documentation of equipment features
(Delivery by third-party service providers)
- Documentation of damage, defects, missing parts
- Documentation of prior damage, unrepaired prior damage, repainting
- A brief visual or functional inspection of the equipment details, if possible.
(Functional testing of driver assistance systems is not included in the scope of services!)
- a photographic documentation of the vehicle

Basis for the order

This product is based on the guidelines for vehicle returns and valuations of light commercial vehicles published by Alphabet Fleet Management GmbH. The expert makes the specific findings in each individual case objectively, within the framework of the prescribed standards, based on their own expertise.

The vehicle inspection takes place in a fully assembled, unassembled state.

Damage or defects that can only be detected during disassembly/diagnostic work or through further investigation remain within the realm of prognostic risk. An increased risk exists due to concealed defects caused by fraudulent misrepresentation and which were not identifiable by the expert.

Damage or defects resulting from normal use or wear and tear of the vehicle will be accepted in accordance with the applicable standard.

There was no explicit identification or monetary consideration of the expected features within the product.

Features which, in their nature and extent, slightly exceed normal use but do not constitute unacceptable damage, will be documented and indicated as signs of wear, if applicable.

Damage or defects that, according to the applicable standard, can no longer be attributed to normal use or wear and tear are listed under "Value Reducing Factors" in the product description.

Depending on the product specification, a monetary ID can be provided. If this takes place, the costs can be 100% or pro rata depending on the vehicle's age and mileage.

Previous damages

No apparent prior damage that had been repaired could be found on the vehicle.



Figure 1: Diagonal front (left)



Figure 2: Diagonal front (right)



Figure 3: Diagonal rear (left)



Figure 4: Diagonal rear (right)



Figure 5: Interior - front



Figure 6: Interior - rear



Figure 7: Instrument cluster



Figure 8: Instrument panel



Figure 9: Interior 360° view



Figure 10: Cargo area

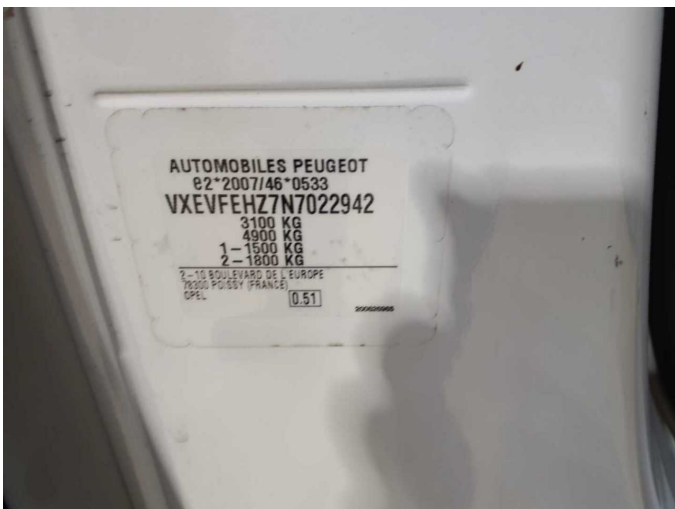


Figure 11: VIN



Figure 12: Mounted tyres



Figure 13: Documents



Figure 14: Additional tyres



Figure 15: Additional tyres

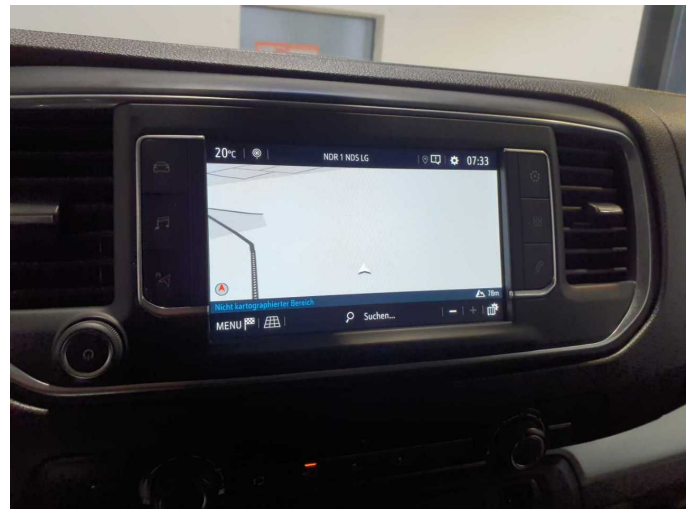


Figure 16: Navigation



Figure 17: Misc.



Figure 18: Misc.



Figure 19: Misc.



Figure 20: Misc.



Figure 21: Misc.

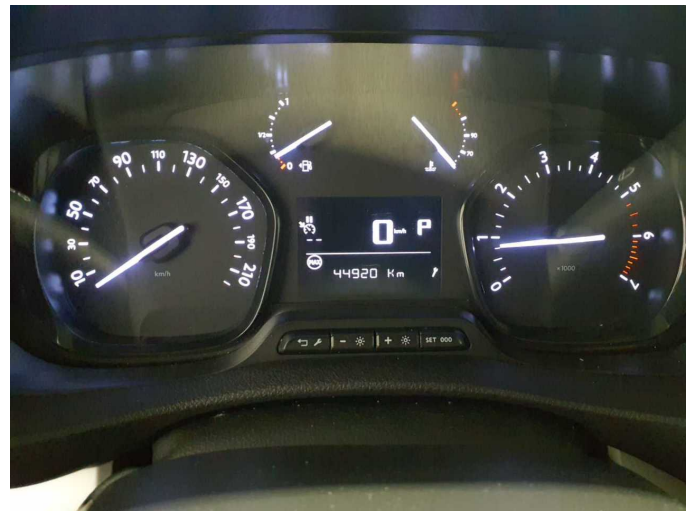


Figure 22: Misc.



Figure 23: Misc.



Figure 24: Misc.



Figure 25: Misc.



Figure 26: Misc.

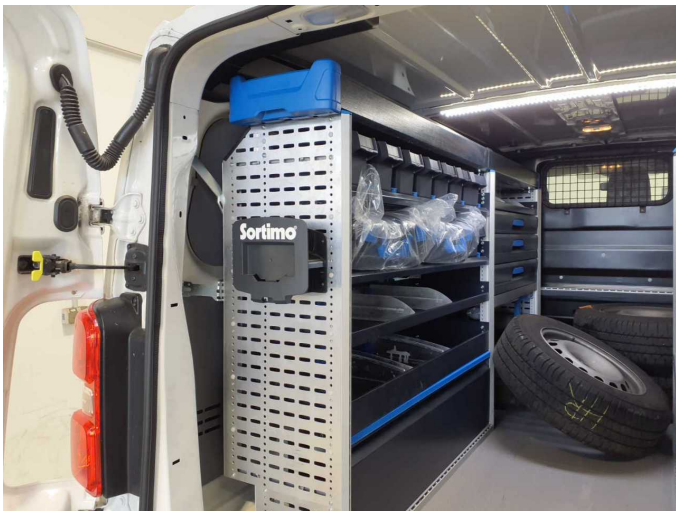


Figure 27: Misc.



Figure 28: Misc.

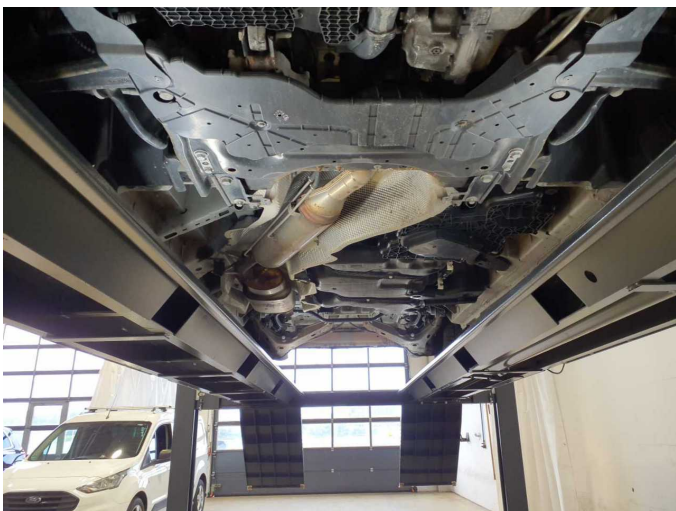


Figure 29: Misc.



Damage 2: Roof: Stub aerial - Broken / torn - Replace



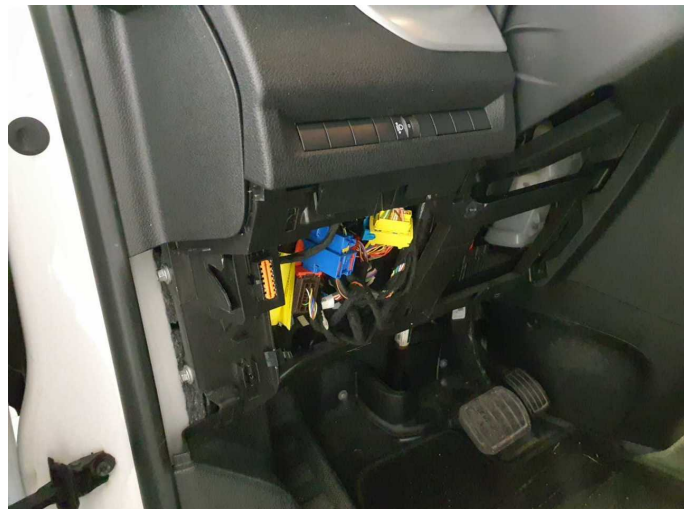
Damage 3: Equipment: Tirefit filler - Expired - Replace



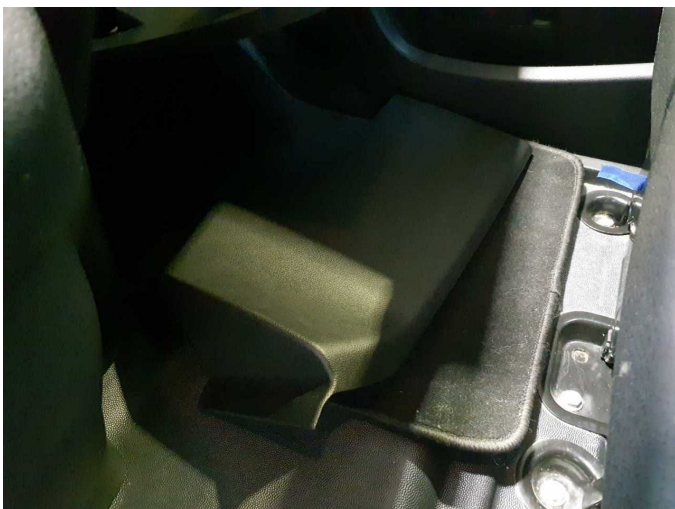
Damage 4: Door - front right side: Door seal - Loose - Un- / install



Damage 4: Door - front right side: Door seal - Loose - Un- / install



Damage 5: Trim / covers: Trim / covers - Loose - Un- / install



Damage 5: Trim / covers: Trim / covers - Loose - Un- / install



Damage 6: Screen cleaning: Wiper blades - front - Missing - Replace



Damage 7: Side panel - rear right side: Side panel - dent(s) - Smooth repair work



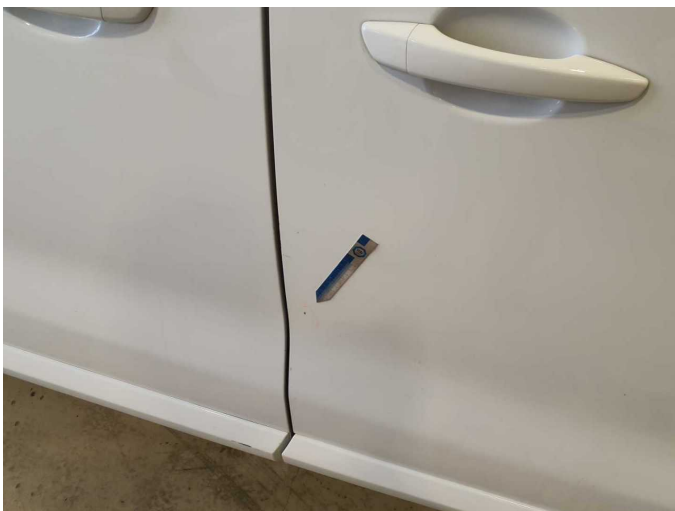
Damage 7: Side panel - rear right side: Side panel - dent(s) - Smooth repair work



Damage 8: Seat - front: Seat cover - left side - Scratch(es) - Smart repair



Damage 8: Seat - front: Seat cover - left side - Scratch(es) - Smart repair



Damage 9: Door - front right side: Door - Scratch(es) - Smart repair



Damage 9: Door - front right side: Door - Scratch(es) - Smart repair



Damage 10: Rear bumper: Bumper - rear right side - Scratch(es) - Smart repair



Damage 10: Rear bumper: Bumper - rear right side - Scratch(es) - Smart repair



Damage 11: Door - front left side: Door - Scratch(es) - Smart repair



Damage 11: Door - front left side: Door - Scratch(es) - Smart repair



Damage 12: Engine: Engine - Leaking - Perform diagnosis



Damage 13: Sliding door, right: Door seal - Broken / torn - Replace



Damage 13: Sliding door, right: Door seal - Broken / torn - Replace



Damage 14: Sill - left side: Sill - dent(s) - Smart repair



Damage 14: Sill - left side: Sill - dent(s) - Smart repair



Damage 15: Engine: Engine cover - Damage caused by marten / rodent - Replace



Damage 16: Door - rear right side: Brightware - lower - Scratch(es) - Paint



Damage 16: Door - rear right side: Brightware - lower - Scratch(es) - Paint



Damage 17: Trim / covers: Door trim - rear right side - Broken / torn - Replace



Damage 18: Front bumper: Front bumper - Broken / torn - repair according to calculation



Damage 18: Front bumper: Front bumper - Broken / torn - repair according to calculation



Damage 18: Front bumper: Front bumper - Broken / torn - repair according to calculation



Damage 18: Front bumper: Front bumper - Broken / torn - repair according to calculation



Wear and tear 6: Wheel / tyres: Tyre - right - Differs from the original configuration - No deduction



Wear and tear 6: Wheel / tyres: Tyre - right - Differs from the original configuration - No deduction



Wear and tear 6: Wheel / tyres: Tyre - right - Differs from the original configuration - No deduction



Wartungshistorie

(gemäß Auftraggeber Informationen)

Fahrgestellnummer: VXEVFEHZ7N7022942

Hersteller / Modell: OPEL OPEL Vivaro 2.0 D Cargo L EHZ Autm. Elegance

Datum	KM-Stand	Beschreibung
07.04.2026	100.755	Bremsflüssigkeit; Bremsflüssigkeit ern; Keilrippenriemen; Motoröl b. Wartung; Ölfilter ern; Regelwartungsdienst; Systemtest/Eigendiagnose; Wartung Sonstiges
25.11.2025	89.442	Anlasser ern; Reparatur Sonstiges; Systemtest/Eigendiagnose; Wartung Sonstiges
06.06.2025	70.291	Bremse Sonstiges; Bremsklötze hinten; Bremsklötze vorne; Bremsscheiben hinten; Bremsscheiben vorne; Kraftstofffilter ern; Luftfiltereinsatz ern; Motoröl b. Wartung; Ölfilter ern; Regelwartungsdienst; Wartung Sonstiges
02.12.2024	51.636	Systemtest/Eigendiagnose; Wartung Sonstiges
15.02.2024	37.539	Motoröl b. Wartung; Ölfilter ern; Regelwartungsdienst; Wartung Sonstiges
19.09.2023	28.401	Motoröl b. Wartung; Ölfilter ern; Ölwechsel; Wartung Sonstiges