

Expertise

Protocol number: 46015388
Order No. / Reference: 26450208
Inspection date: 16 Jun 2026

Manufacturer: Ford

Model: Transit Connect 230 L2 S&S Trend

VIN: WF07XXWPG7NY74055



Vehicle details

Manufacturer / Type / Model / Equipment

Ford Transit Connect 230 L2 S&S Trend

Vehicle Identification number WF07XXWPG7NY74055

Mileage (Read) 182,539 km

First registration 21 Jul 2022

Number of holders 1

Power / Engine displacement 88 kw / 1,499 ccm

Fuel type / Cylinder Diesel / 4

Gearbox / Number of gears Manual / 6

Type of drive Front drive

Type of vehicle Van

Colour / colour code Polar-Silber Metallic

Doors / Seats 5 / 5

Upholstery type Cloth

Colour of upholstery Grey-Black



Vehicle details

Maintenance booklet / proof	digital proof / complete	Next maintenance in	83 %
Last service on / at	02/2026 at 178,623 km		
Key is / should be	3 / 3	FZG documents	ZB#2 (B) was available (copy), ZB#1 (S) was not available.
		Letter No.	GH427766
Previous damage / Accident	Detectable	Repainting	Detectable
Inspection conditions	sufficient	Lifting equipment / pit	No
Test drive	Not performed	Engine function test	Performed
Manufacturer key number/ type code number	8566 / BLK 00440		
Emission standard	EURO6;WLTP;AP;PI/CI; M, N1 I	fine dust sticker	
Permitted total weight	2,290 kg	Empty weight	

Tyres

Mounted tyres

#	Tyre size	Type of tyre	Manufacturer	Tread depth
1)	205/60 R16 96H	Winter tyres on Steel rim with wheel cover	Goodyear	7mm / 7mm
2)	205/60 R16 96H	Winter tyres on Steel rim with wheel cover	Goodyear	7mm / 7mm

Additional tyres

#	Tyre size	Type of tyre	Manufacturer	Tread depth
1)	205/60 R16 96H	Summer tyres on Steel	Continental	0mm / 0mm
2)	205/60 R16 96H	Summer tyres on Steel	Continental	1mm / 1mm

Replacement

Typ	Tyre size	Type of tyre	Manufacturer	Tread depth
	Tirefit	Expiration date 02/2026		

Legend: Tread depth information for the left tire is listed first, for the right tire it is listed second on the axle in the direction of travel.

TÜV SÜD Auto Partner GmbH
Wiesenring 2
04159 Leipzig

Inspection location
Hartmann Fleet Professionals GmbH
Leerenstraße 25
29683 Bad Fallingbommel



Equipment



Standard equipment

- Anti-lock braking system (ABS) with electronic brake force distribution (EBD)
- Hill start assist
- Front overhead storage shelf (across the entire interior width (in Titanium models additionally with glasses storage compartment and interior mirror for eye contact with rear passengers))
- Lane keeping assist including lane keeping assist and driver fatigue warning
- Front electric windows with one-touch down function for the driver's side
- FordPass Connect including live traffic information and Wi-Fi hotspot (information about the current status or location of the vehicle as well as control of selected vehicle functions via smartphone with the FordPass app - Real-time traffic information - Wi-Fi hotspot (up to 4G/LTE7, for up to 10 mobile devices))
- Glove compartment with lid
- Interior lighting for passenger/cargo compartment
- Interior lighting front and rear with delay function
- Intelligent safety system (front airbag for driver and front passenger (including front passenger airbag deactivation function) - head and shoulder airbags in the front and for the outer seats of the second row, and in the Grand Tourneo also for the third row - side airbags for driver and front passenger - front seat belt tensioners and force limiters - safety pedals and steering column - point seat belts at all seats, height-adjustable in the front)
- Steering column, adjustable (adjustable in height and reach)
- Fog light
- Package: Seat Package 22 (Fabric, Capitol/City in Ebony (black) - Driver's seat, 3-way manually adjustable (forward/backward, height, backrest), with lumbar support - Single passenger seat, 2-way manually adjustable (forward/backward, backrest) and foldable - Map pocket for driver's seat)
- Radio equipment: Ford Audio System 2 (Radio (FM/AM) - USB port - Bluetooth interface - Hands-free system - Audio remote control on the steering wheel - 6 speakers - DAB/DAB+)
- Wheels: Steel wheels 6.5 J x 16 with 205/60 R 16 tires and wheel trims
- Black plastic side protection strips
- Safety Brake Assist (EBA)
- Bench seat (in the 2nd row, 3 seats). 60:40 split, foldable.
- Front spoiler lip
- Start-stop system
- 12-volt socket in storage compartment on dashboard (driver's side)
- Rear bumper, black plastic
- Daytime running light
- Child safety lock on sliding doors
- Warning system for unfastened driver and front passenger seat belts
- Central locking with remote control (door lock only on driver's door) (automatic safety door locking)
- Electrically adjustable and heated exterior mirrors
- Black exterior mirror caps (plastic)
- On-board computer (with fuel consumption, mileage information and outside temperature display)
- Diesel particulate filter (DPF)
- Third brake light
- Electronic Stability Program (ESP) (with Traction Control (TCS) including Torque Vectoring Control)
- Rear electric windows, right and left (at the height of the 2nd row of seats)
- Ford EcoSelect: a selectable driving mode (A driving mode selectable via a button, which enables more fuel-efficient driving)
- Removable luggage compartment cover
- Cruise control system (with intelligent speed limiter (camera-based) including traffic sign recognition system)
- Transmission: 6-speed manual transmission
- Rear swing door including heated rear window and wiper/washer system
- Intelligent battery management system
- Isofix mounting (outer seats of the 2nd row)
- Front air conditioning, manual, with semi-electronic recirculation function
- Rear headrests (3)
- Headrests 2 front, height adjustable
- Radiator grille with 5 crossbars, black plastic
- Steering wheel: Multifunction leather steering wheel, 4 spokes (with aluminum-look inserts)
- Front center console, open, with storage space (for DIN A4-sized folders)
- Emergency brake light (hazard warning flashing activation during heavy braking)
- Pollen and dust filter
- Pollen filter and dust filter
- Pre-Collision Assist (camera-based, with pedestrian and cyclist detection: - Automatic Emergency Braking (AEB) - Dynamic Brake Support (DBS) - Forward Collision Warning (FCW) - Windscreen, acoustic laminated glass)
- Tire repair kit, space and weight saving (maximum speed of 80 km/h when used)
- Tire pressure monitoring system
- Windscreen wipers with rain sensor
- Sliding door, right and left
- Electro-mechanical power steering (EPAS - Electric Power Assisted Steering)
- Sun visor with mirror on driver and passenger side (for drivers with ticket holder)
- Concealed storage compartment on dashboard
- Power outlet: 12-volt connection on the center console, front and rear
- Front bumper painted in body color
- Carpet floor mats for the front (2-piece set)



- Traffic sign recognition system
- Immobilizer EPATS
- Heat-insulating glazing, lightly tinted

Extra equipment

- Exterior mirrors, electrically adjustable, heated and folding (housing painted in body color on Titanium models - incl. electric front and rear windows with quick-up/down function - mirrors fold in automatically when the vehicle is locked)
- Heated windshield
- Adaptive cruise control with intelligent speed limiter (Pre-Collision Assist, radar and camera-based, with pedestrian and cyclist detection2) - Lane Keeping Assist including Lane Departure Warning and Driver Alert - Leather multifunction steering wheel - Traffic Sign Recognition System)
- Package: Seat Package 6 (fabric, Capitol/City in Ebony (black) - driver's seat, 3-way manually adjustable (forward/backward, height, backrest), with lumbar support - single passenger seat, 2-way manually adjustable (forward/backward, backrest) and foldable - map pocket for driver's seat - seat heating for driver and single passenger seats)
- Headlight assistant with day/night sensor (including headlight dipped beam with switch-off delay, windscreen wipers with rain sensor, automatically dimming interior mirror)
- Blind Spot Assist (narrow mirror format) incl. Cross Traffic Alert
- Central locking: 2nd remote control key for central locking
- Auxiliary electric heater (PTC), front
- Anti-theft alarm system with interior monitoring (including double locking and 2 remote control keys in the overhead storage compartment including glasses storage compartment - with fold-out additional mirror for eye contact with rear passengers)
- Air conditioning with automatic temperature control (separately adjustable for driver and passenger side (2-zone automatic climate control))
- Paint finish: Metallic
- Paintwork: Special paintwork in metallic color
- Navigation: Ford Audio System 9 navigation systems, including Ford SYNC 3 with AppLink, touchscreen and reversing camera
- Front and rear parking pilot system
- Radio equipment: Ford Audio System 154 (4.2" non-chrome display (10.7 cm screen diagonal) - Radio (FM/AM) - USB port - Bluetooth interface - Hands-free system - 6 speakers - Emergency call assistant - Phase diversity antenna - DAB/DAB+)
- Safety partition net for separating passenger and luggage compartments (including attachment points)
- Auxiliary heater (programmable (fuel-operated))
- Xenon headlights with LED daytime running lights (automatic headlight range control - headlight cleaning system)

Brief expert findings

Documents submitted	At the time of the inspection, the vehicle registration certificate Part 2 (title) was available, but the vehicle registration certificate Part 1 (document) was not. (Copy)
VIN comparison	The vehicle identification number (VIN) was read from the vehicle and its conformity with the submitted documents was confirmed by the undersigned during the inspection.
Inspection	The inspection conditions were sufficient for the assessment of the vehicle. No lifting equipment or pit was available for inspecting the vehicle. Therefore, inspection of the vehicle's underside was only possible to a limited extent.
Test drive	No test drive/shunting maneuver was carried out during the inspection of the vehicle.
Engine function test	An engine test run was performed.



Value reducing factors

No.	Component group	Description
1	Equipment	Tirefit filler - Expired - Replace
2	Roof	Roof rail - left side - dent(s) - Smooth repair work
3	Door - front left side	Door - dent(s) - Smooth repair work
4	Roof	Roof rail - right side - dent(s) - Smooth repair work
5	Roof	Roof - dent(s) - Smooth repair work
6	Body	Body - Glued / labelled - De-glue / neutralise
7	Equipment	Vehicle key - Broken / torn - Replace
8	Interior	Cargo area floor - Broken / torn - Replace
9	Side panel - rear left side	Side panel (Spachtel eingefallen) - Unprofessionally repaired - Paint
10	Front bumper	Front bumper - Dent / paintcoat damage - Paint

Wear and tear

No.	Component group	Description
1	Trim / covers	Boot lining - Scratch(es) - No deduction
2	Bonnet	Bonnet - Stone chips - No deduction
3	Door - rear right side	Brightware - lower - Scratch(es) - No deduction
4	2nd wheel set	Tyres - complete set (Kein Teil der Ausstattung) - Worn - No deduction
5	Trim / covers	Floor mats - Broken / torn - No deduction
6	Mudguard - right side	Mudguard - right side - Dent / paintcoat damage - Paint

The vehicle shows signs of wear and tear commensurate with its age and use.

Previous damages

No.	Previous damage	Extent of damage (Net)
1	Rear, Provided by user / customer, from 16 Sept 2024	3.055,75 €
2	Rear, Side - left, Professionally repaired, Invoice of repair done Non-existent, from 11 Dec 2024	6.371,28 €

Repainting

No.	Repainting
1	Roof rail - left side, Professionally carried out, Invoice of repair done Non-existent
2	Door - front left side, Professionally carried out, Invoice of repair done Non-existent
3	Side panel - rear left side, Unprofessionally carried out, Invoice of repair done Non-existent

Paint coat thickness measurement

Roof rail - left side	210 µm	Side panel - rear left side	1,370 µm
Door - front left side	237 µm		



Order/Scope of Order

An order was placed to prepare a sales report for the described vehicle. This report includes the following:

- Description of key vehicle information
- Documentation of equipment features
(Delivery by third-party service providers)
- Documentation of damage, defects, missing parts
- Documentation of prior damage, unrepaired prior damage, repainting
- A brief visual or functional inspection of the equipment details, if possible.
(Functional testing of driver assistance systems is not included in the scope of services!)
- a photographic documentation of the vehicle

Basis for the order

This product is based on the guidelines for vehicle returns and valuations of light commercial vehicles published by Alphabet Fleet Management GmbH. The expert makes the specific findings in each individual case objectively, within the framework of the prescribed standards, based on their own expertise.

The vehicle inspection takes place in a fully assembled, unassembled state.

Damage or defects that can only be detected during disassembly/diagnostic work or through further investigation remain within the realm of prognostic risk. An increased risk exists due to concealed defects caused by fraudulent misrepresentation and which were not identifiable by the expert.

Damage or defects resulting from normal use or wear and tear of the vehicle will be accepted in accordance with the applicable standard.

There was no explicit identification or monetary consideration of the expected features within the product.

Features which, in their nature and extent, slightly exceed normal use but do not constitute unacceptable damage, will be documented and indicated as signs of wear, if applicable.

Damage or defects that, according to the applicable standard, can no longer be attributed to normal use or wear and tear are listed under "Value Reducing Factors" in the product description.

Depending on the product specification, a monetary ID can be provided. If this takes place, the costs can be 100% or pro rata depending on the vehicle's age and mileage.

Previous damages

Professionally repaired previous damages were found at the vehicle.



Figure 1: Diagonal front (left)



Figure 2: Diagonal front (right)



Figure 3: Diagonal rear (left)



Figure 4: Diagonal rear (right)

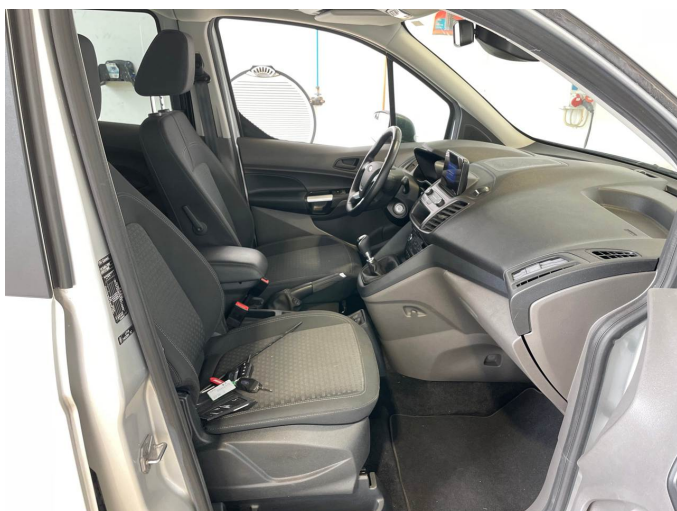


Figure 5: Interior - front



Figure 6: Interior - rear



Figure 7: Instrument cluster



Figure 8: Instrument panel



Figure 9: Interior 360° view

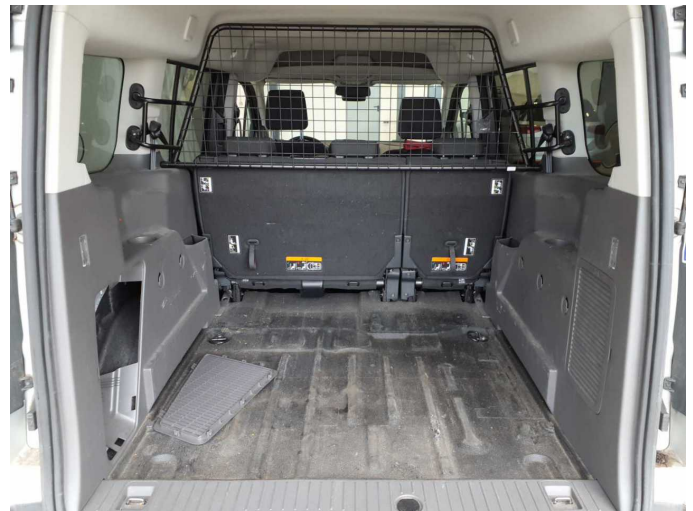


Figure 10: Cargo area



Figure 11: VIN



Figure 12: Mounted tyres



Figure 13: Documents



Figure 14: Additional tyres

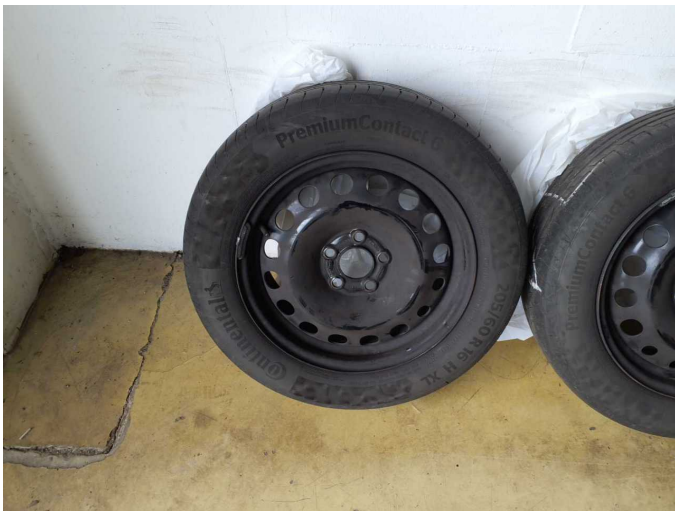


Figure 15: Additional tyres



Figure 16: Navigation



Figure 17: Misc.



Figure 18: Misc.



Figure 19: Misc.



Figure 20: Misc.

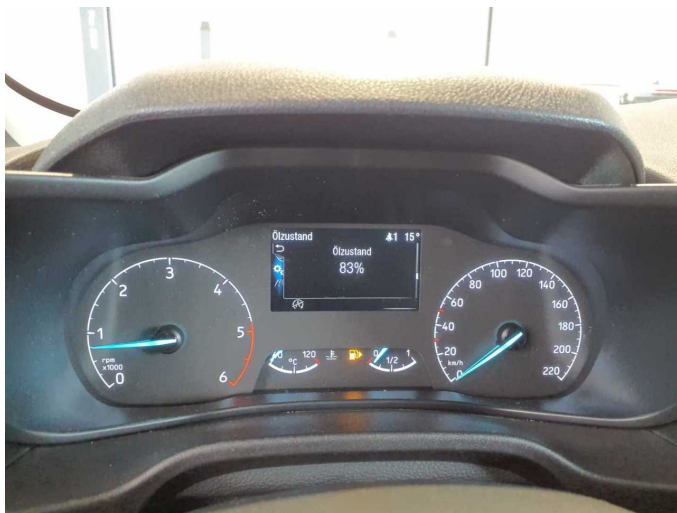


Figure 21: Misc.

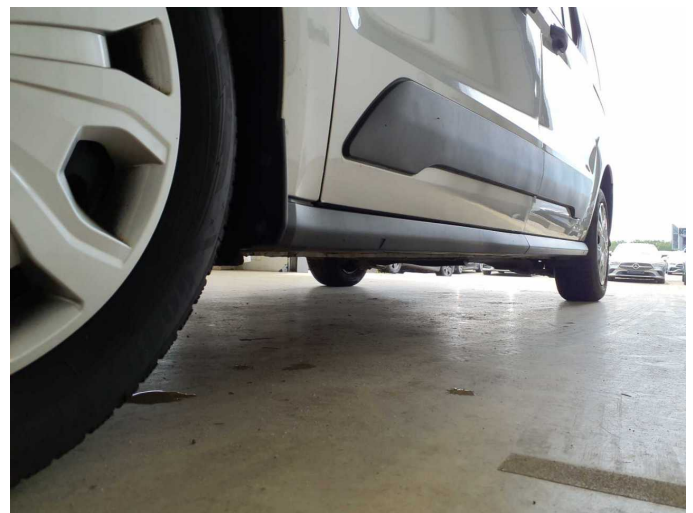


Figure 22: Misc.



Figure 23: Misc.



Figure 24: Misc.



Figure 25: Misc.



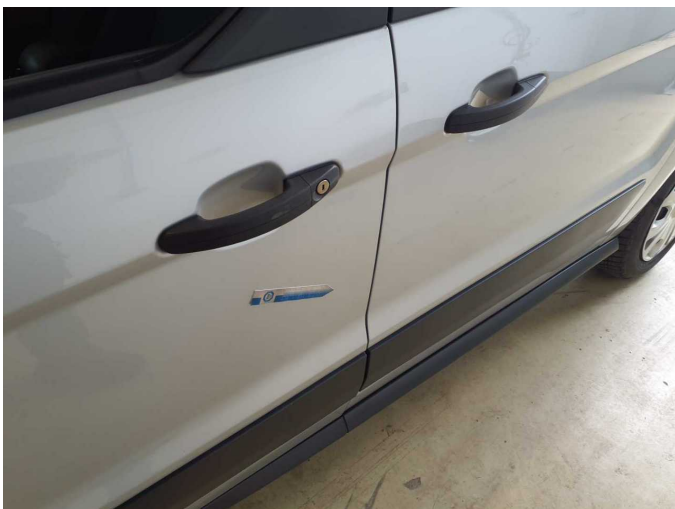
Damage 1: Equipment: Tirefit filler - Expired - Replace



Damage 2: Roof: Roof rail - left side - dent(s) - Smooth repair work



Damage 2: Roof: Roof rail - left side - dent(s) - Smooth repair work



Damage 3: Door - front left side: Door - dent(s) - Smooth repair work



Damage 3: Door - front left side: Door - dent(s) - Smooth repair work



Damage 4: Roof: Roof rail - right side - dent(s) - Smooth repair work



Damage 4: Roof: Roof rail - right side - dent(s) - Smooth repair work



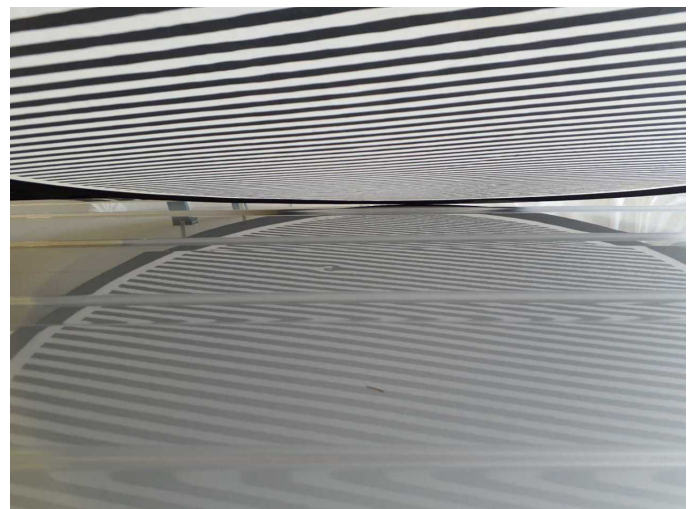
Damage 4: Roof: Roof rail - right side - dent(s) - Smooth repair work



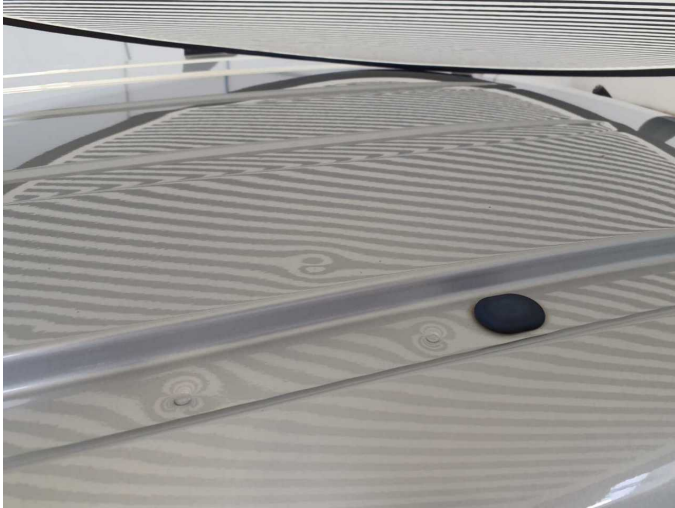
Damage 5: Roof: Roof - dent(s) - Smooth repair work



Damage 5: Roof: Roof - dent(s) - Smooth repair work



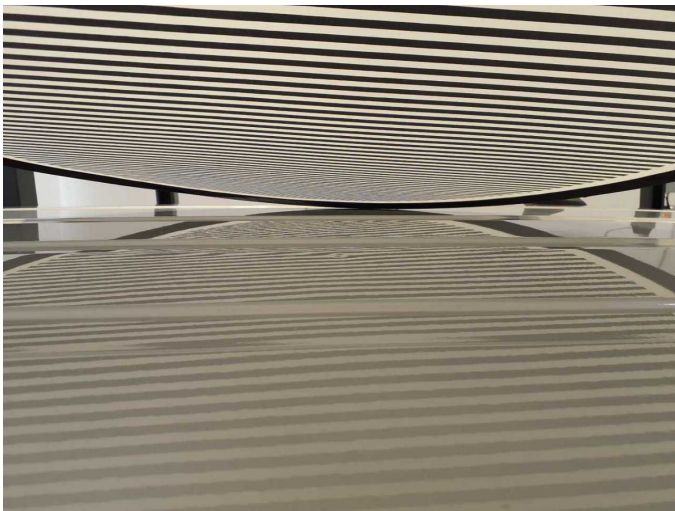
Damage 5: Roof: Roof - dent(s) - Smooth repair work



Damage 5: Roof: Roof - dent(s) - Smooth repair work



Damage 5: Roof: Roof - dent(s) - Smooth repair work



Damage 5: Roof: Roof - dent(s) - Smooth repair work



Damage 5: Roof: Roof - dent(s) - Smooth repair work



Damage 5: Roof: Roof - dent(s) - Smooth repair work



Damage 6: Body: Body - Glued / labelled - De-glude / neutralise



Damage 6: Body: Body - Glued / labelled - De-glue / neutralise



Damage 7: Equipment: Vehicle key - Broken / torn - Replace



Damage 8: Interior: Cargo area floor - Broken / torn - Replace



Damage 8: Interior: Cargo area floor - Broken / torn - Replace



Damage 9: Side panel - rear left side: Side panel (Spachtel eingefallen) - Unprofessionally repaired - Paint



Damage 9: Side panel - rear left side: Side panel (Spachtel eingefallen) - Unprofessionally repaired - Paint



Damage 9: Side panel - rear left side: Side panel (Spachtel eingefallen) - Unprofessionally repaired - Paint



Damage 10: Front bumper: Front bumper - Dent / paintcoat damage - Paint



Damage 10: Front bumper: Front bumper - Dent / paintcoat damage - Paint



Damage 10: Front bumper: Front bumper - Dent / paintcoat damage - Paint



Wear and tear 4: 2nd wheel set: Tyres - complete set (Kein Teil der Ausstattung) - Worn - No deduction



Wear and tear 4: 2nd wheel set: Tyres - complete set (Kein Teil der Ausstattung) - Worn - No deduction



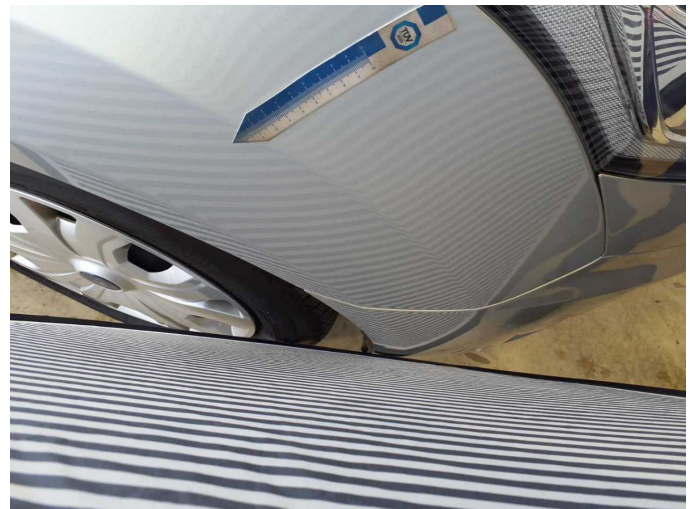
Wear and tear 4: 2nd wheel set: Tyres - complete set (Kein Teil der Ausstattung) - Worn - No deduction



Wear and tear 4: 2nd wheel set: Tyres - complete set (Kein Teil der Ausstattung) - Worn - No deduction



Wear and tear 5: Trim / covers: Floor mats - Broken / torn - No deduction



Wear and tear 6: Mudguard - right side: Mudguard - right side - Dent / paintcoat damage - Paint



Wear and tear 6: Mudguard - right side: Mudguard - right side - Dent / paintcoat damage - Paint



Repainting 1: Roof rail - left side



Repainting 1: Roof rail - left side



Repainting 2: Door - front left side



Repainting 2: Door - front left side



Repainting 3: Side panel - rear left side



Repainting 3: Side panel - rear left side