

Expertise

Protocol number: 46224716
Order No. / Reference: 26594373
Inspection date: 29 Jun 2026

Manufacturer: Opel

Model: Astra Sports Tourer 1.5 D Automatik GS

VIN: VXKFCYHZ6R1050280



Vehicle details

Manufacturer / Type / Model / Equipment

Opel Astra Sports Tourer 1.5 D Automatik GS

Vehicle Identification number VXKFCYHZ6R1050280

Mileage (Read) 40,674 km

First registration 13 Sept 2024

Number of holders 1

Power / Engine displacement 96 kw / 1,499 ccm

Fuel type / Cylinder Diesel / 4

Gearbox / Number of gears Automatic / 8

Type of drive Front drive

Type of vehicle Station wagon

Colour / colour code Grey Metallic

Doors / Seats 5 / 5

Upholstery type Cloth / leather combination

Colour of upholstery Black-Anthracite

readiness to drive Not roadworthy / moveable



Vehicle details

Maintenance booklet / proof	digital evidence / incomplete	Next maintenance in	0 km
Last service on / at	04/2025 at 23,418 km		
Key is / should be	2 / 2	FZG documents	ZB#2 (B) was available (copy), ZB#1 (S) was not available.
		Letter No.	HB494689
Previous damage / Accident	None detectable	Repainting	None detectable
Inspection conditions	sufficient	Lifting equipment / pit	No
Test drive	Not performed	Engine function test	With complaint
readiness to drive	Not roadworthy / moveable		
Manufacturer key number/ type code number	2525 / ABT 00018		
Emission standard	EURO6;WLTP;EA;PI/CI;M, N1, N2	fine dust sticker	
Permitted total weight	1,980 kg	Empty weight	

Tyres

Mounted tyres

#	Tyre size	Type of tyre	Manufacturer	Tread depth
1)	205/55 R16 91H	Winter tyres on Light alloy	Pirelli	6mm / 6mm
2)	205/55 R16 91H	Winter tyres on Light alloy	Pirelli	7mm / 7mm

Additional tyres

#	Tyre size	Type of tyre	Manufacturer	Tread depth
1)	205/55 R16 94V	All-season tyres on Light alloy	Goodyear	6mm / 6mm
2)	205/55 R16 94V	All-season tyres on Light alloy	Goodyear	7mm / 7mm

Replacement

Typ	Tyre size	Type of tyre	Manufacturer	Tread depth
Tirefit		Expiration date 01/2029		

Legend: Tread depth information for the left tire is listed first, for the right tire it is listed second on the axle in the direction of travel.

TÜV SÜD Auto Partner GmbH
Wiesenring 2
04159 Leipzig

Inspection location
Hartmann Fleet Professionals GmbH
Leerenstraße 25
29683 Bad Fallingbommel



Equipment



Standard equipment

- Storage compartments (storage compartment in the center console, in the front doors suitable for 1.5-liter beverage bottles, in the rear doors suitable for 0.5-liter beverage bottles, glove compartment with LED lighting)
- Airbag: Front and rear outer head airbags
- Aluminum pedals
- Automatic activation of the hazard warning lights (and unlocking of the doors after deployment of the airbag or seatbelt pretensioner)
- On-board computer
- Roof design line, in black
- Diesel particulate filter (DPF) maintenance-free (exhaust aftertreatment via SCR (Selective Catalytic Reduction) catalyst with AdBlue (urea injection). Vehicles with BlueInjection technology require refilling of the AdBlue fluid between regular service intervals. A display in the vehicle informs the driver in good time when refilling is necessary.)
- Forward Collision Warning with Automatic Emergency Braking and Pedestrian Detection (automatic transmission) (The automatic emergency braking system brakes the vehicle or brings it to a standstill - Lane Keeping Assist: warning via indicator light and gentle counter-steering - Traffic Sign Recognition - Driver Alert System - Automatic Speed Assist (activation from 30 km/h to 180 km/h) with stop function; the vehicle is then automatically braked to a standstill and can automatically follow the vehicle in front, even in traffic jams)
- Front headrests and 3 rear headrests, height adjustable
- LED ambient lighting (front doors, adjustable in 8 colors)
- LED headlights (LED headlights - LED daytime running lights - LED taillights - LED turn signals - manual headlight range control - high beam assist - automatic low beam - rain sensor)
- Steering wheel heating
- Illuminated makeup mirrors in both sun visors
- Multimedia Infotainment System (with 10" color touchscreen display and 10" driver information display, automatic music recognition, Bluetooth audio streaming, hands-free calling, simultaneous pairing of 2 mobile phones, wireless smartphone integration via Apple CarPlay and Android Auto, personalization options, 4x20 watts, favorite station memory (24 per profile), speed-dependent volume control, FM/AM, DAB+, RDS-EON, 2 USB-C ports)
- Tire repair kit (including tire sealant and 12-volt compressor (without jack))
- Rear seat backrest folds forward in a 40:20:40 split
- Seat belts: Three-point seat belts in all seats (belt force limiter and belt tensioner in the front and on the outer rear seats - warning tone and light for unfastened seat belts in all seats)
- Heated seats for driver and front passenger (multi-stage adjustable)
- Start/Stop system (Driving assistant - Reinforced starter - AGM high-performance battery - eco switch to deactivate the start/stop function - Brake energy recuperation)
- Electronic immobilizer
- Central locking with remote control (and interior switch)
- Airbag: Chest-pelvis side airbags, driver and front passenger (side airbag, front passenger can be manually deactivated)
- Airbag: Front airbags, driver and front passenger (front passenger airbag can be manually deactivated)
- Anti-lock braking system (ABS) (including brake assist)
- Exterior mirrors, electrically adjustable, heated and folding
- Exterior mirror housings in black
- Hill Start Assist
- third brake light
- Headliner, Black
- Tachometer
- Electronic brake force distribution (EBD)
- Electronic Stability Program (ESP) and Traction Control with engine and brake intervention (TCPlus)
- Electric windows front and rear (with one-touch function and anti-pinch protection)
- Transmission: 8-speed automatic transmission
- Back window, heater
- rear window wiper
- Interior rearview mirror, automatically dimming
- Wiring harness for trailer hitch
- Dual-zone automatic climate control (dual-zone automatic climate control with separate temperature control for driver and front passenger - recirculation mode, manual - particle/activated carbon filter - automatic air distribution - sun position sensor - humidity sensor)
- Paintwork: Roof in car color
- LED interior lighting (including reading lights, front and rear, as well as trunk lighting and lighting in the front footwell)
- Steering wheel: Leather steering wheel, flattened, perforated, with steering wheel remote control and paddle shifters
- Center armrest, front and rear (front center armrest with USB port and 2 USB chargers - front and rear cup holders - storage compartments - rear center armrest with pass-through)
- Fog light
- Opel Blitz logo, Astra lettering on the rear (high-gloss black surround for air intakes)
- Opel Vizor with frame in high-gloss black
- Electric parking brake
- Parkpilot, front and rear parking aid
- Tire pressure monitoring system
- Reversing camera: 360-degree reversing camera
- Keyless locking and starting system Keyless Open & Start
- Seats: Ergonomic sport active seat driver Greta fabric/premium leather look (Ergonomic sport active seat (AGR), driver - Greta fabric/premium leather look, black, - driver's seat 10-way adjustable (length, height, tilt, backrest tilt, seat cushion tilt) - front passenger seat 6-way adjustable (length, height, tilt) - 4-way front headrests - pockets on the back of the front seats)
- 12V power outlet in the center console



- Pre-installation for ISOFIX child seat mounting system (incl. top tether attachment points, rear outer)

Extra equipment

- Detachable trailer hitch (including trailer stability program TSP)
- Package: Tech Package GS (ST) (Intelli-Drive 1.0: Forward Collision Warning with Automatic Emergency Braking and Pedestrian Detection, Traffic Sign Recognition, Automatic Speed Assist, Blind Spot Warning, Rear Cross Traffic Alert - IntelliLux LED Pixel Light: Adaptive LED Matrix Headlights with Individual Light Distribution: - City Light, Highway Light, Country Road Light, Static Cornering Light, Turning Light, - Wireless Charging - Roof Rails)
- safety net
- Paint finish: Metallic
- Navigation system (with 10" color touchscreen display and 10" driver information display, Pure Panel Pro and voice control for audio, telephone and navigation; navigation system with integrated memory; 3D map display for Europe and Russia; dynamic route guidance; personalization options; quick access buttons for 6 functions; emergency/breakdown call; Connected Navigation Package incl. Connect Plus: - TomTom Online Traffic - Online POI search and route guidance - Over-the-air map updates - Remote control via myOpel app)

Brief expert findings

Documents submitted	At the time of the inspection, the vehicle registration certificate Part 2 (title) was available, but the vehicle registration certificate Part 1 (document) was not. (Copy)
VIN comparison	The vehicle identification number (VIN) was read from the vehicle and its conformity with the submitted documents was confirmed by the undersigned during the inspection.
Inspection	The inspection conditions were sufficient for the assessment of the vehicle. No lifting equipment or pit was available for inspecting the vehicle. Therefore, inspection of the vehicle's underside was only possible to a limited extent.
Test drive	No test drive/shunting maneuver was carried out during the inspection of the vehicle.
Engine function test	An engine test run was performed, problem has been detected
readiness to drive	The vehicle was not capable of driving under its own power at the time of inspection, but can be moved on its own axle with the aid of assistance.

Value reducing factors

No.	Component group	Description
1	2nd wheel set	1 tyre - Empty - Perform diagnosis
2	Instrument panel	Indicator light (Reifendruck) - on - Perform diagnosis
3	Instrument panel	Indicator light (Motorkontrolle, nicht fahrbereit) - on - Perform diagnosis
4	Misc.	Inspection / maintenance - Due - Perform
5	Bonnet	Bonnet (Anätzung) - Paint defect - Repair and paint
6	Rear bumper	Rear bumper - Scratch(es) - Paint
7	Roof	Roof (Anätzung) - Paint defect - Repair and paint

Wear and tear

No.	Component group	Description
1	Wheel / tyres	Alloy rim - front right side - Scratch(es) - No deduction
2	Door - front right side	Door - dent(s) - No deduction

The vehicle shows signs of wear and tear commensurate with its age and use.



Order/Scope of Order

An order was placed to prepare a sales report for the described vehicle. This report includes the following:

- Description of key vehicle information
- Documentation of equipment features
(Delivery by third-party service providers)
- Documentation of damage, defects, missing parts
- Documentation of prior damage, unrepaired prior damage, repainting
- A brief visual or functional inspection of the equipment details, if possible.
(Functional testing of driver assistance systems is not included in the scope of services!)
- a photographic documentation of the vehicle

Basis for the order

This product is based on the guidelines for vehicle returns and valuations published by Alphabet Fleet GmbH. The expert makes the specific findings in each individual case objectively, within the framework of the prescribed standards, based on their own expertise.

The vehicle inspection takes place in a fully assembled, unassembled state.

Damage or defects that can only be detected during disassembly/diagnostic work or through further investigation remain within the realm of prognostic risk. An increased risk exists due to concealed defects caused by fraudulent misrepresentation and which were not identifiable by the expert.

Damage or defects resulting from normal use or wear and tear of the vehicle will be accepted in accordance with the applicable standard.

There was no explicit identification or monetary consideration of the expected features within the product.

Features which, in their nature and extent, slightly exceed normal use but do not constitute unacceptable damage, will be documented and indicated as signs of wear, if applicable.

Damage or defects that, according to the applicable standard, can no longer be attributed to normal use or wear and tear are listed under "Value Reducing Factors" in the product description.

Depending on the product specification, a monetary ID can be provided. If this takes place, the costs can be 100% or pro rata depending on the vehicle's age and mileage.

Previous damages

No apparent prior damage that had been repaired could be found on the vehicle.



Figure 1: Diagonal front (left)



Figure 2: Diagonal front (right)



Figure 3: Diagonal rear (left)



Figure 4: Diagonal rear (right)



Figure 5: Interior - front



Figure 6: Interior - rear



Figure 7: Instrument cluster



Figure 8: Instrument panel



Figure 9: Interior 360° view



Figure 10: Cargo area

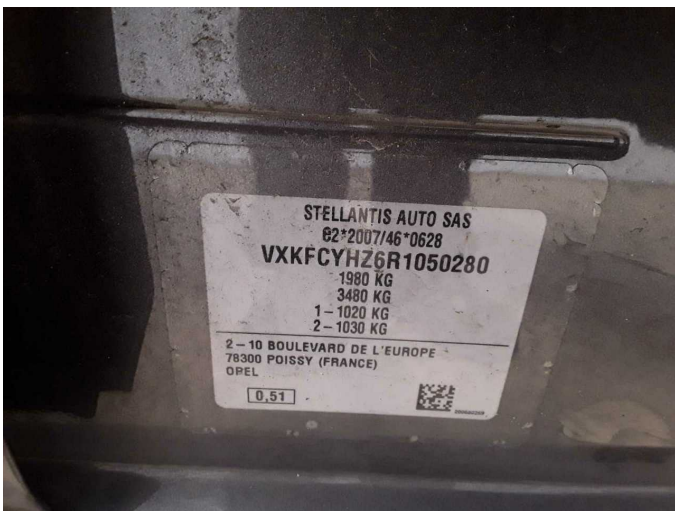


Figure 11: VIN



Figure 12: Mounted tyres



Figure 13: Documents



Figure 14: Documents



Figure 15: Documents



Figure 16: Additional tyres

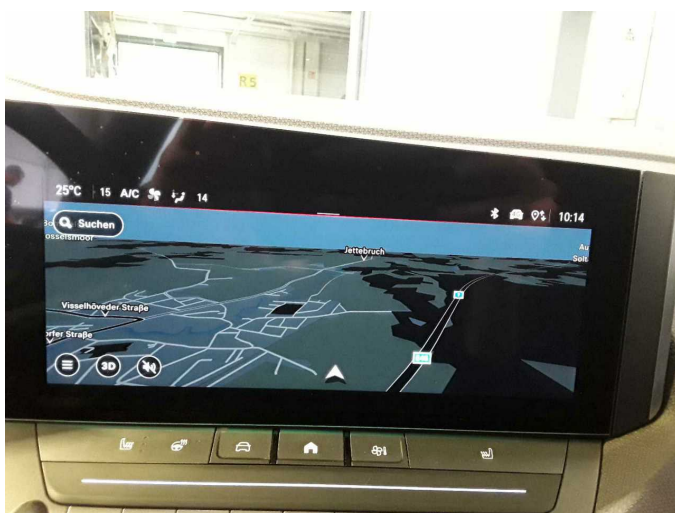


Figure 17: Navigation



Figure 18: Misc.



Figure 19: Misc.



Figure 20: Misc.



Figure 21: Misc.



Figure 22: Misc.

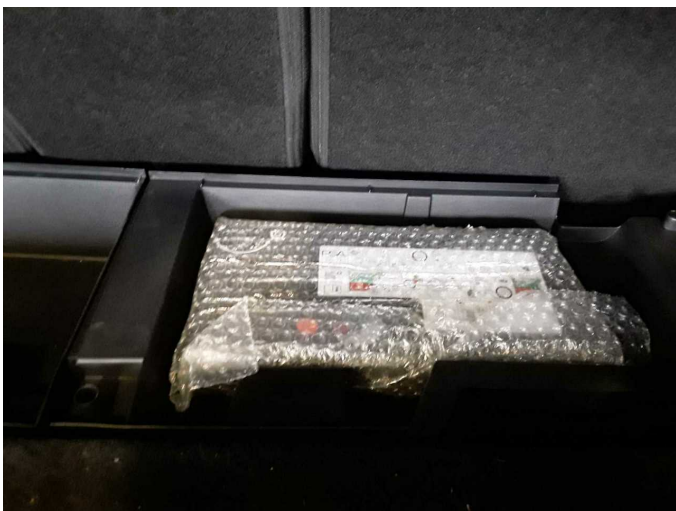


Figure 23: Misc.

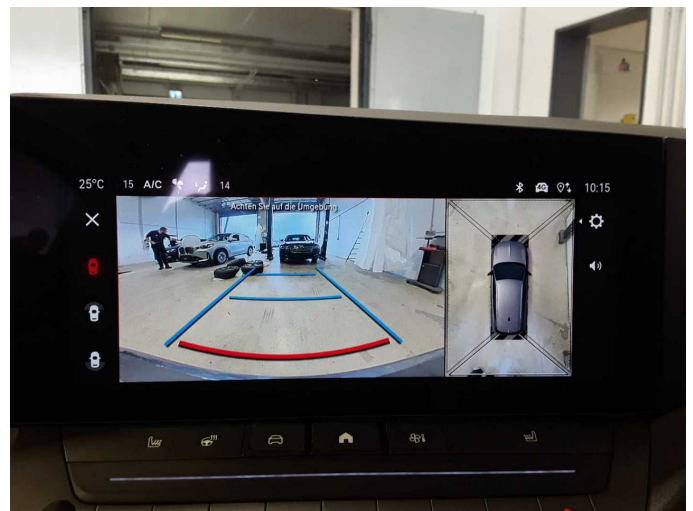


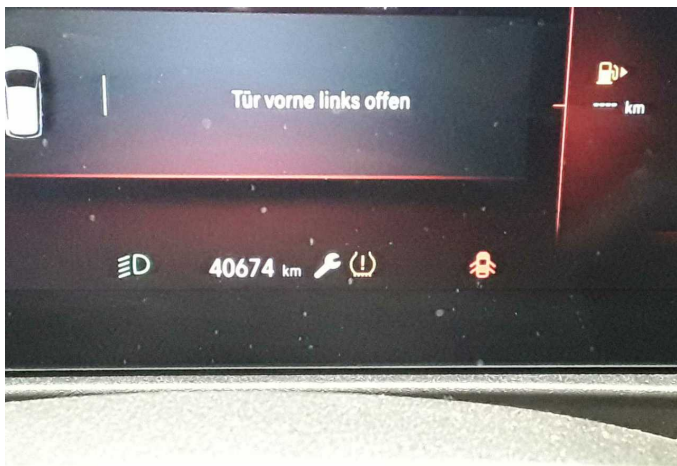
Figure 24: Misc.



Figure 25: Misc.



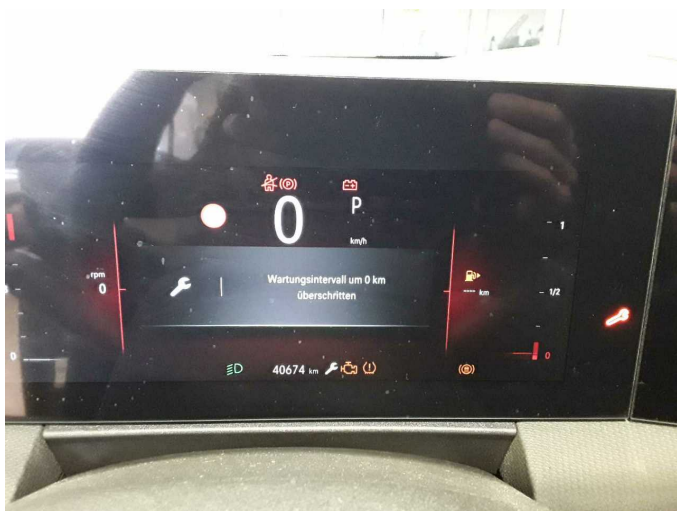
Damage 1: 2nd wheel set: 1 tyre - Empty - Perform diagnosis



Damage 2: Instrument panel: Indicator light (Reifendruck) - on - Perform diagnosis



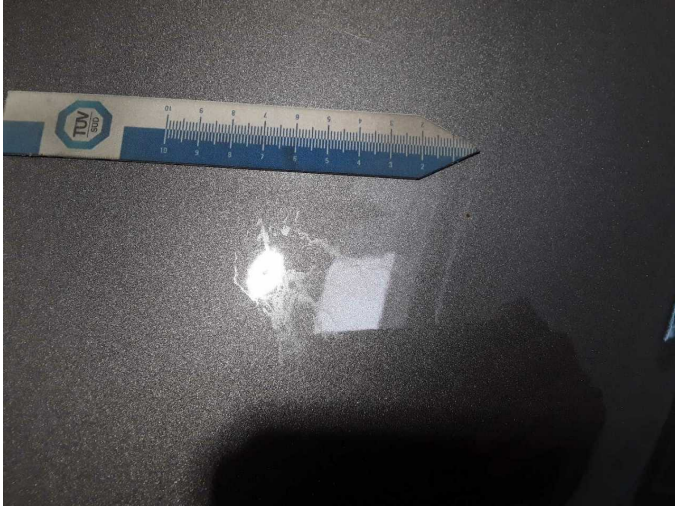
Damage 3: Instrument panel: Indicator light (Motorkontrolle, nicht fahrbereit) - on - Perform diagnosis



Damage 4: Misc.: Inspection / maintenance - Due - Perform



Damage 5: Bonnet: Bonnet (Anätzung) - Paint defect - Repair and paint



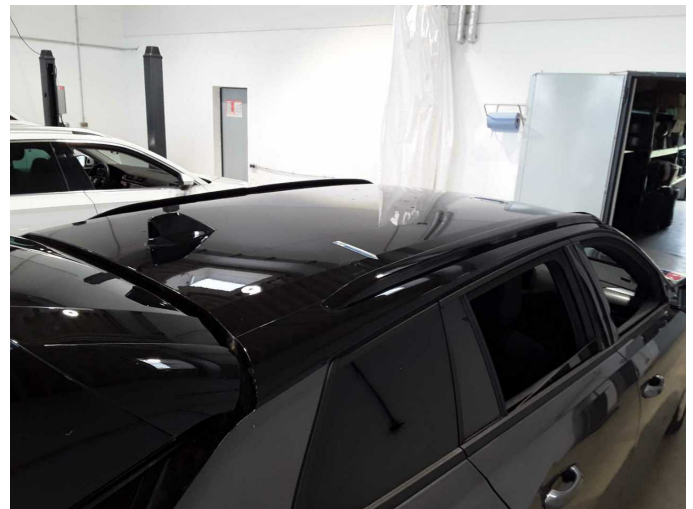
Damage 5: Bonnet: Bonnet (Anätzung) - Paint defect - Repair and paint



Damage 6: Rear bumper: Rear bumper - Scratch(es) - Paint



Damage 6: Rear bumper: Rear bumper - Scratch(es) - Paint



Damage 7: Roof: Roof (Anätzung) - Paint defect - Repair and paint



Damage 7: Roof: Roof (Anätzung) - Paint defect - Repair and paint



Damage 7: Roof: Roof (Anätzung) - Paint defect - Repair and paint



Wartungshistorie

(gemäß Auftraggeber Informationen)

Fahrgestellnummer: VXXFCYHZ6R1050280

Hersteller / Modell: OPEL OPEL Astra Sports Tourer 1.5 D Automatik GS

Datum	KM-Stand	Beschreibung
30.04.2025	23.418	Motoröl b. Wartung; Ölfilter ern; Regelwartungsdienst; Wartung Sonstiges