

Expertise

Protocol number: 46149769
Order No. / Reference: 26520021
Inspection date: 24 Jun 2026

Manufacturer: Opel

Model: Movano 2.2 D L1H1 2WD VA Edition

VIN: VXEYCAPFA12U61460



Vehicle details

Manufacturer / Type / Model / Equipment

Opel Movano 2.2 D L1H1 2WD VA Edition

Vehicle Identification number VXEYCAPFA12U61460

Mileage (Read) 109,920 km

First registration 12 May 2022

Number of holders 1

Next periodical technical inspection 05/2026

(Report not on hand)

Power / Engine displacement 88 kw / 2,179 ccm

Fuel type / Cylinder Diesel / 4

Gearbox / Number of gears Manual / 6

Type of drive Front drive

Type of vehicle Van

Colour / colour code TYPE HABILLAG

EXTERIEUR PLATE

STANDARD

Doors / Seats 4 / 3

Upholstery type Cloth

Colour of upholstery Anthracite-Black



Vehicle details

Maintenance booklet / proof	digital proof / complete	Next maintenance in	24,595 km
Last service on / at	08/2025 at 98,883 km		
Key is / should be	1 / 2	FZG documents	ZB#2 (B) was available (copy), ZB#1 (S) was not available.
		Letter No.	GJ638497
Previous damage / Accident	None detectable	Repainting	None detectable
Inspection conditions	sufficient	Lifting equipment / pit	No
Test drive	Not performed	Engine function test	Not possible
Manufacturer key number/ type code number	3003 / AQJ 00773		
Emission standard	EURO6;WLTP;AR;PI/CI;N1 III, N2	fine dust sticker	
Permitted total weight	3,500 kg	Empty weight	

Tyres

Mounted tyres

#	Tyre size	Type of tyre	Manufacturer	Tread depth
1)	215/70 R15 109S	Winter tyres on Steel rim with wheel cover	Sonstige	7mm / 7mm
2)	215/70 R15 109S	Winter tyres on Steel rim with wheel cover	Sonstige	9mm / 9mm

Additional tyres

#	Tyre size	Type of tyre	Manufacturer	Tread depth
1)	215/70 R15 109S	Summer tyres on Steel	Nexen	6mm / 6mm
2)	215/70 R15 109S	Summer tyres on Steel	Pirelli	9mm / 9mm

Replacement

Typ	Tyre size	Type of tyre	Manufacturer	Tread depth
E	215/70 R15 109S C	Summer tyres on Steel	Nexen	5 mm

Legend: Tread depth information for the left tire is listed first, for the right tire it is listed second on the axle in the direction of travel.



Equipment

Standard equipment

- Storage compartments
- Anti-lock braking system (ABS) with cornering brake control and brake assist
- Exterior mirror housings in black
- Hill Start Assist
- Adaptive brake light
- Tachometer
- ESP, Electronic Stability Program
- Electric front windows
- Speed controller and limiter
- Transmission: 6-speed transmission
- Air conditioning
- Paint finish: Solid color paint
- Steering column: Safety steering column, longitudinally adjustable
- Radio Multimedia with DAB+
- Wheels: Spare wheel, steel
- Keys: 2 ignition keys, one of which is foldable
- Side protection strips
- Seats: 3 seats with fabric upholstery (Edition)
- Start/Stop System
- Daytime running light
- Partition wall, closed
- Footrest on the rear bumper with anti-slip coating
- Doors: Sliding door, passenger side, without window
- Immobiliser
- Driver's side airbag
- Exterior mirrors, electrically adjustable, heated and manually folding
- Battery discharge protection
- On-board computer
- third brake light
- Deletion: Interior rearview mirror
- Window: Colored glass
- Rear gullwing doors, 180° opening angle, sheet metal, asymmetrically divided
- Holder for smartphone or tablet
- Fuel tank 90 l
- Steering wheel: Comfort steering wheel
- Rear parking pilot
- Particulate filter: Soot particle filter for diesel engines with SCR
- Wheels: Steel wheels 6J x 15
- Side impact protection
- Speed-sensitive power steering
- Sun visors, driver and passenger
- 12-volt power outlet in the cargo area
- Traction control with engine and brake intervention (TC Plus)
- Doors: Sheet metal insert, driver's side in the 2nd row
- Lashing points: 8-10 in the cargo area
- Central locking with remote control

Extra equipment

- Passenger side airbag
- Trailer hitch preparation

Retrofitted equipment

- Winter complete wheels
- Würth shelving system

Brief expert findings

Documents submitted	At the time of the inspection, the vehicle registration certificate Part 2 (title) was available, but the vehicle registration certificate Part 1 (document) was not. (Copy)
VIN comparison	The vehicle identification number (VIN) was read from the vehicle and its conformity with the submitted documents was confirmed by the undersigned during the inspection.
Inspection	The inspection conditions were sufficient for the assessment of the vehicle. No lifting equipment or pit was available for inspecting the vehicle. Therefore, inspection of the vehicle's underside was only possible to a limited extent.
Test drive	No test drive/shunting maneuver was carried out during the inspection of the vehicle.
Engine function test	An engine test run could not be performed. This is due to the following reason.: Motorschaden zerlegt



Value reducing factors

No.	Component group	Description
1	Seat - front	Seat cover - left side (Sitze) - Soiled - Clean
2	Misc.	Main inspection (Kein Nachweis) - Due - Perform
3	Sill - left side	Sill - Scratch(es) - Smart repair
4	Front bumper	Front bumper (Unlackiert) - Scratch(es) - Loss in value
5	Body	Body - Glued / labelled - De-glue / neutralise
6	Braking system	Brake discs and pads - rear - Corrosion - Replace
7	Braking system	Brake discs and brake pads - front - Corrosion - Replace
8	Side panel - rear left side	Side panel (Eckteil) - Dent / paintcoat damage - Repair and paint
9	Sliding door, right	Sliding door - Dent / paintcoat damage - Repair and paint
10	Engine	Engine (Siehe Kostenvoranschlag) - Defective - Replace

Wear and tear

No.	Component group	Description
1	Rear bumper	Rear bumper (unpainted) - Scratch(es) - No deduction

The vehicle shows signs of wear and tear commensurate with its age and use.

Missing parts

Description

Equipment - Vehicle key with remote control

Order/Scope of Order

An order was placed to prepare a sales report for the described vehicle. This report includes the following:

- Description of key vehicle information
- Documentation of equipment features
(Delivery by third-party service providers)
- Documentation of damage, defects, missing parts
- Documentation of prior damage, unrepaired prior damage, repainting
- A brief visual or functional inspection of the equipment details, if possible.
(Functional testing of driver assistance systems is not included in the scope of services!)
- a photographic documentation of the vehicle



Basis for the order

This product is based on the guidelines for vehicle returns and valuations of light commercial vehicles published by Alphabet Fleet Management GmbH. The expert makes the specific findings in each individual case objectively, within the framework of the prescribed standards, based on their own expertise.

The vehicle inspection takes place in a fully assembled, unassembled state.

Damage or defects that can only be detected during disassembly/diagnostic work or through further investigation remain within the realm of prognostic risk. An increased risk exists due to concealed defects caused by fraudulent misrepresentation and which were not identifiable by the expert.

Damage or defects resulting from normal use or wear and tear of the vehicle will be accepted in accordance with the applicable standard.

There was no explicit identification or monetary consideration of the expected features within the product.

Features which, in their nature and extent, slightly exceed normal use but do not constitute unacceptable damage, will be documented and indicated as signs of wear, if applicable.

Damage or defects that, according to the applicable standard, can no longer be attributed to normal use or wear and tear are listed under "Value Reducing Factors" in the product description.

Depending on the product specification, a monetary ID can be provided. If this takes place, the costs can be 100% d or pro rata depending on the vehicle's age and mileage.

Previous damages

No apparent prior damage that had been repaired could be found on the vehicle.

Comments

Motorraum im Zerlegten Zustand !

Regalsystem von Würth, nicht erkennbar was vorhanden ist oder was fehlt. Eventuell muss hier eine Nachberechnung erfolgen.

Unterbodenbesichtigung nicht möglich-Mehrkosten können entstehen.



Figure 1: Diagonal front (left)



Figure 2: Diagonal front (right)



Figure 3: Diagonal rear (left)



Figure 4: Diagonal rear (right)

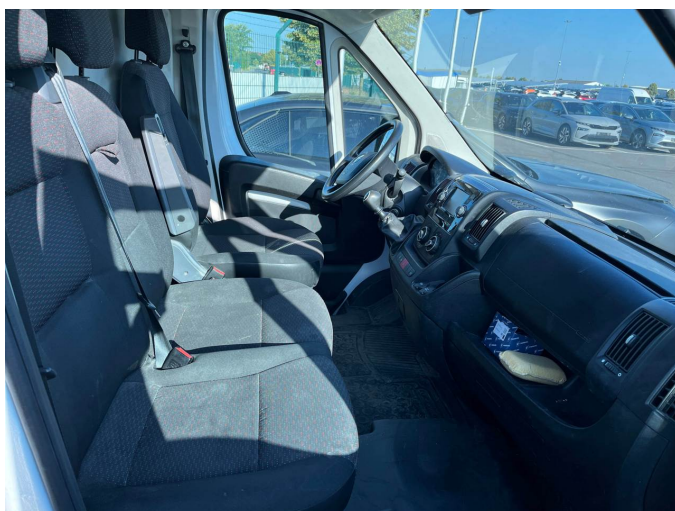


Figure 5: Interior - front



Figure 6: Interior - rear



Figure 7: Instrument cluster



Figure 8: Instrument panel



Figure 9: Interior 360° view



Figure 10: Cargo area



Figure 11: VIN



Figure 12: Mounted tyres



Figure 13: Documents



Figure 14: Documents



Figure 15: Documents



Figure 16: Documents



Figure 17: Documents



Figure 18: Documents



Figure 19: Misc.



Figure 20: Misc.



Figure 21: Misc.

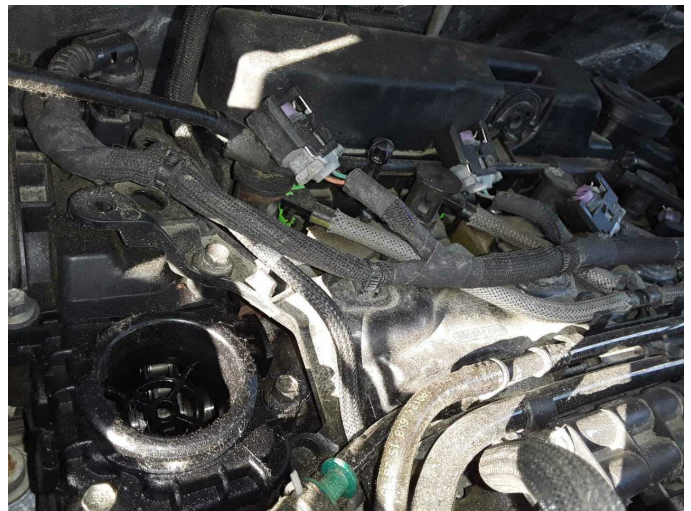


Figure 22: Misc.

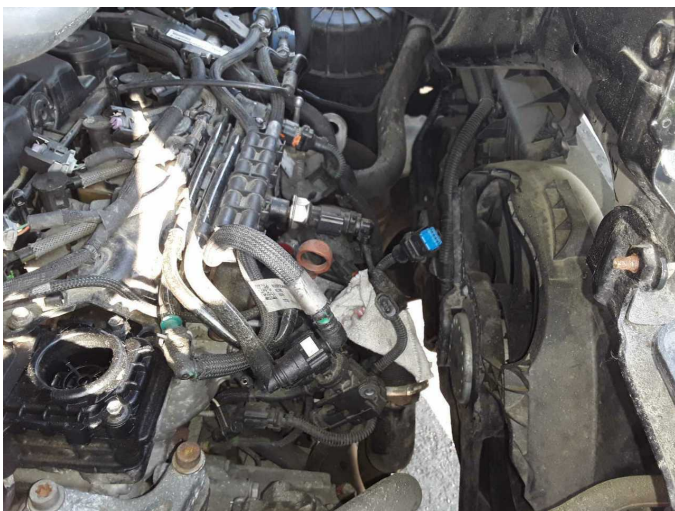


Figure 23: Misc.



Figure 24: Misc.



Figure 25: Misc.



Figure 26: Misc.



Figure 27: Misc.



Figure 28: Misc.

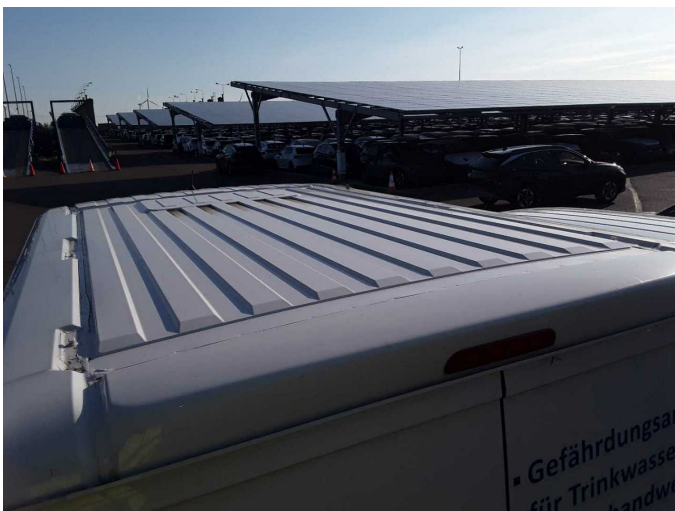


Figure 29: Misc.



Figure 30: Misc.



Figure 31: Misc.



Figure 32: Misc.



Figure 33: Misc.



Figure 34: Misc.



Figure 35: Misc.



Figure 36: Misc.



Figure 37: Misc.



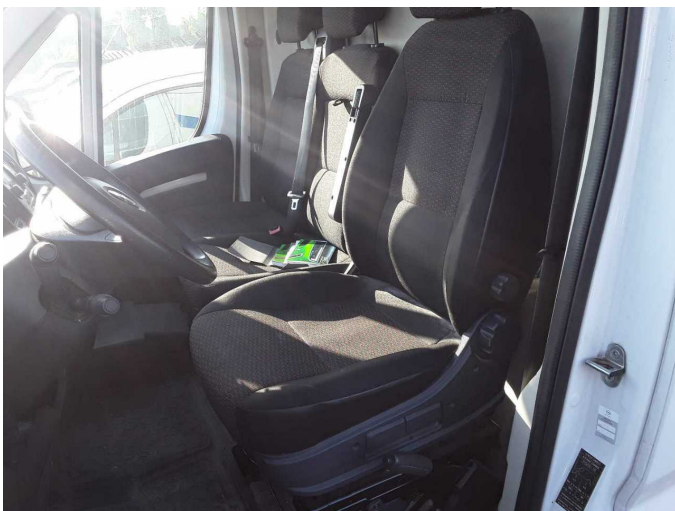
Figure 38: Misc.



Figure 39: Misc.



Damage 1: Seat - front: Seat cover - left side (Sitze) - Soiled - Clean



Damage 1: Seat - front: Seat cover - left side (Sitze) - Soiled - Clean



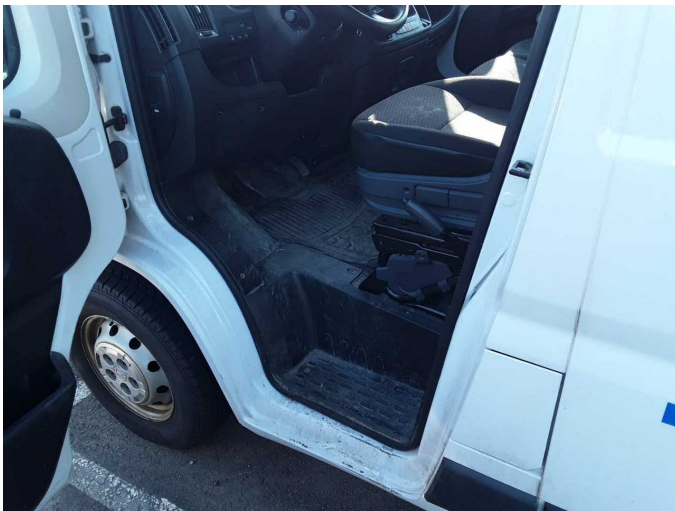
Damage 1: Seat - front: Seat cover - left side (Sitze) - Soiled - Clean



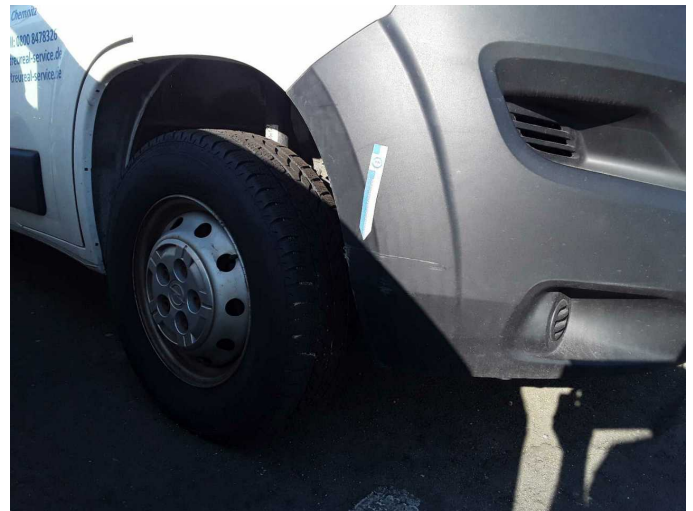
Damage 3: Sill - left side: Sill - Scratch(es) - Smart repair



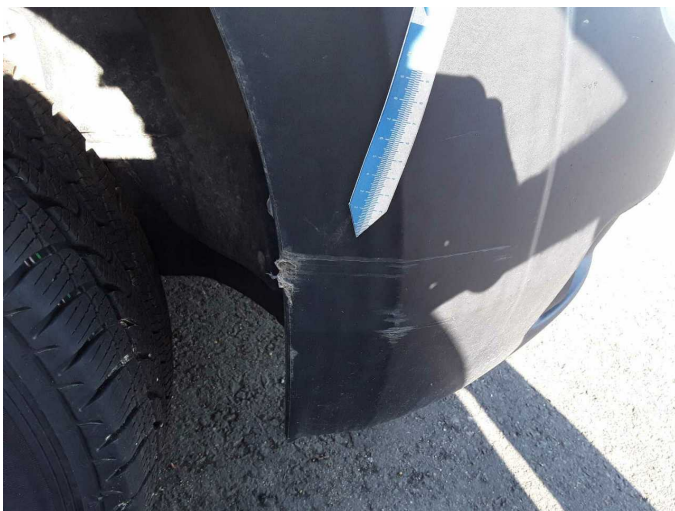
Damage 3: Sill - left side: Sill - Scratch(es) - Smart repair



Damage 3: Sill - left side: Sill - Scratch(es) - Smart repair



Damage 4: Front bumper: Front bumper (Unlackiert) - Scratch(es) - Loss in value



Damage 4: Front bumper: Front bumper (Unlackiert) - Scratch(es) - Loss in value



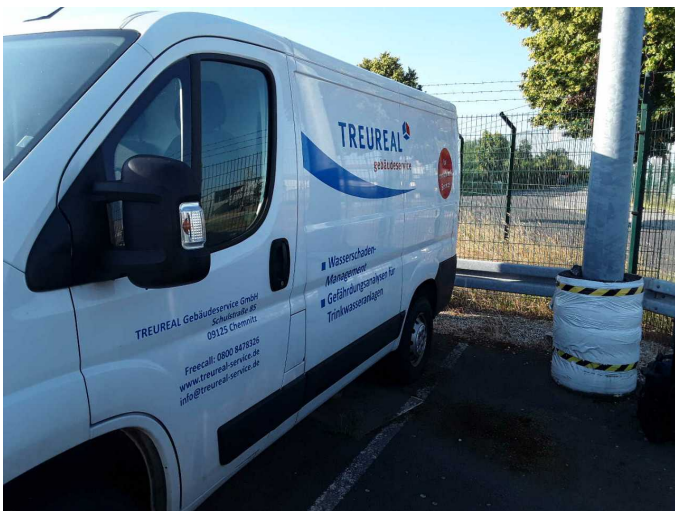
Damage 4: Front bumper: Front bumper (Unlackiert) - Scratch(es) - Loss in value



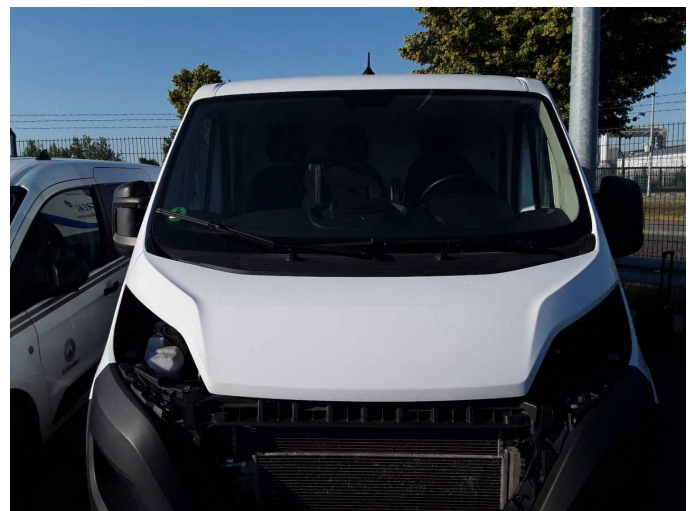
Damage 5: Body: Body - Glued / labelled - De-glue / neutralise



Damage 5: Body: Body - Glued / labelled - De-glue / neutralise



Damage 5: Body: Body - Glued / labelled - De-glue / neutralise



Damage 5: Body: Body - Glued / labelled - De-glue / neutralise



Damage 6: Braking system: Brake discs and pads - rear - Corrosion - Replace



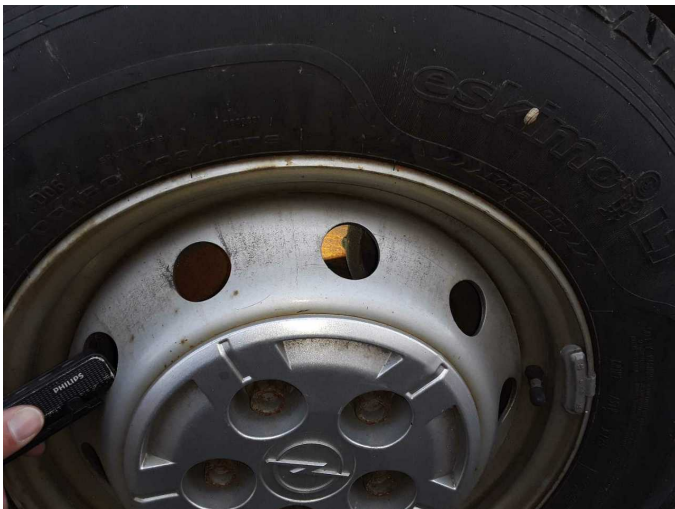
Damage 6: Braking system: Brake discs and pads - rear - Corrosion - Replace



Damage 6: Braking system: Brake discs and pads - rear - Corrosion - Replace



Damage 6: Braking system: Brake discs and pads - rear - Corrosion - Replace



Damage 6: Braking system: Brake discs and pads - rear - Corrosion - Replace



Damage 6: Braking system: Brake discs and pads - rear - Corrosion - Replace



Damage 7: Braking system: Brake discs and brake pads - front - Corrosion - Replace



Damage 7: Braking system: Brake discs and brake pads - front - Corrosion - Replace



Damage 7: Braking system: Brake discs and brake pads - front - Corrosion - Replace



Damage 7: Braking system: Brake discs and brake pads - front - Corrosion - Replace



Damage 7: Braking system: Brake discs and brake pads - front - Corrosion - Replace



Damage 8: Side panel - rear left side: Side panel (Eckteil) - Dent / paintcoat damage - Repair and paint



Damage 8: Side panel - rear left side: Side panel (Eckteil) - Dent / paintcoat damage - Repair and paint



Damage 8: Side panel - rear left side: Side panel (Eckteil) - Dent / paintcoat damage - Repair and paint



Damage 8: Side panel - rear left side: Side panel (Eckteil) - Dent / paintcoat damage - Repair and paint



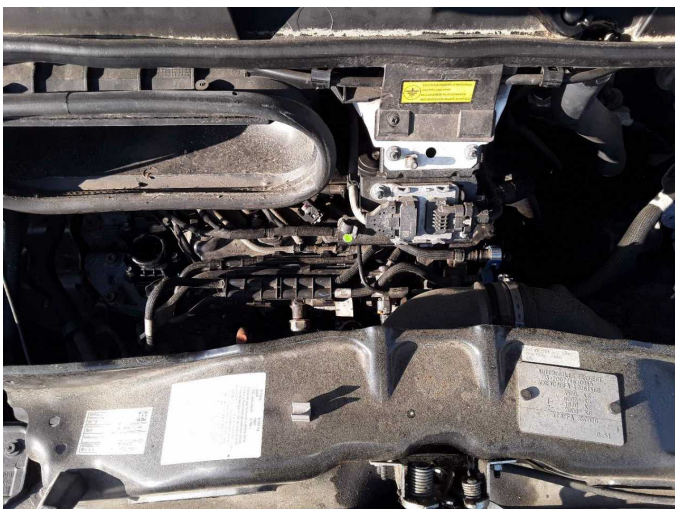
Damage 9: Sliding door, right: Sliding door - Dent / paintcoat damage - Repair and paint



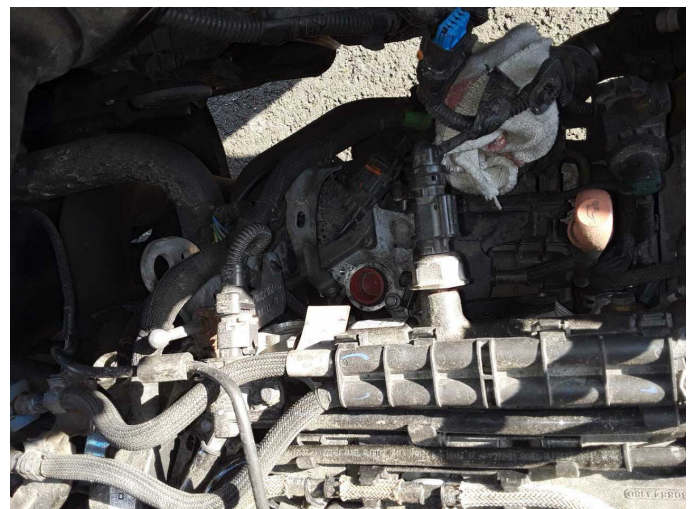
Damage 9: Sliding door, right: Sliding door - Dent / paintcoat damage - Repair and paint



Damage 9: Sliding door, right: Sliding door - Dent / paintcoat damage - Repair and paint



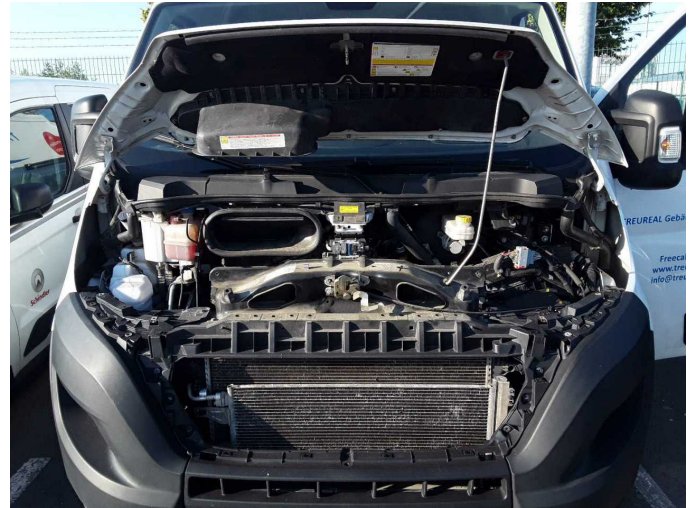
Damage 10: Engine: Engine (Siehe Kostenvoranschlag) - Defective - Replace



Damage 10: Engine: Engine (Siehe Kostenvoranschlag) - Defective - Replace



Damage 10: Engine: Engine (Siehe Kostenvoranschlag) - Defective - Replace



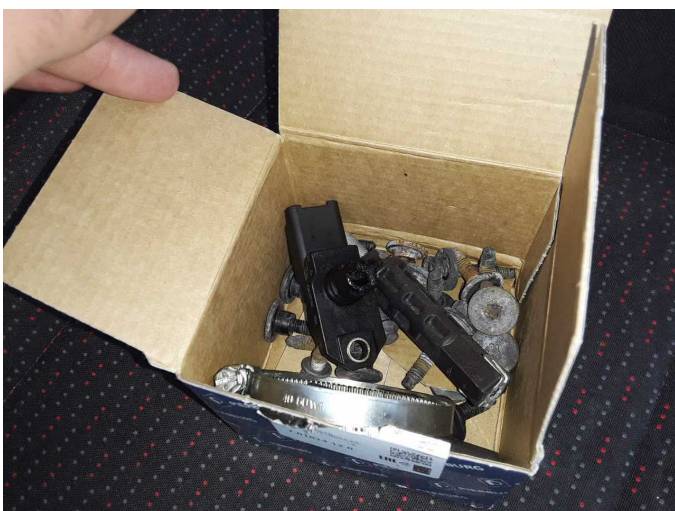
Damage 10: Engine: Engine (Siehe Kostenvoranschlag) - Defective - Replace



Damage 10: Engine: Engine (Siehe Kostenvoranschlag) - Defective - Replace



Damage 10: Engine: Engine (Siehe Kostenvoranschlag) - Defective - Replace



Damage 10: Engine: Engine (Siehe Kostenvoranschlag) - Defective - Replace



Damage 10: Engine: Engine (Siehe Kostenvoranschlag) - Defective - Replace



Wear and tear 1: Rear bumper: Rear bumper (unpainted) - Scratch(es) - No deduction



Wartungshistorie

(gemäß Auftraggeber Informationen)

Fahrgestellnummer: VXEYCAPFA12U61460

Hersteller / Modell: OPEL OPEL Movano 2.2 D L1H1 2WD VA Edition

Datum	KM-Stand	Beschreibung
17.02.2026	109.920	Kompression prüfen; Systemtest/Eigendiagnose
20.08.2025	98.883	Motoröl b. Wartung; Ölfilter ern; Reparatur Sonstiges; Spannrolle ern; Systemtest/Eigendiagnose; Wartung Sonstiges; Zahnriemen/Steuerkett ern
21.05.2025	95.360	Systemtest/Eigendiagnose
11.12.2024	91.444	Bremse Sonstiges; Bremsklötze vorne; Bremsscheiben + Klötze v; Bremsscheiben vorne
27.08.2024	86.513	Bremsflüssigkeit; Bremsflüssigkeit ern; Kraftstofffilter ern; Luftfiltereinsatz ern; Ölfilter ern; Regelwartungsdienst; Systemtest/Eigendiagnose; Wartung Sonstiges
31.05.2024	80.405	HU + AU
09.10.2023	57.769	Motoröl b. Wartung; Ölfilter ern; Ölwechsel; Wartung Sonstiges
19.07.2023	49.755	Bremse Sonstiges; Bremsklötze vorne; Bremsscheiben vorne
21.01.2023	29.874	Motoröl b. Wartung; Ölfilter ern; Ölwechsel; Wartung Sonstiges