

Expertise

Protocol number: 46337276
Order No. / Reference: 26300938
Inspection date: 6 Jul 2026

Manufacturer: Ford

Model: Transit Connect 210 L2 S&S Trend

VIN: WF0SXXWPGSMC80854



Vehicle details

Manufacturer / Type / Model / Equipment

Ford Transit Connect 210 L2 S&S Trend

Vehicle Identification number WF0SXXWPGSMC80854

Mileage (Read) 89,326 km

First registration 23 Nov 2021

Number of holders 1

Next periodical technical inspection 01/2028
(Report on hand)

Power / Engine displacement 73 kw / 1,499 ccm

Fuel type / Cylinder Diesel / 4

Gearbox / Number of gears Manual / 6

Type of drive Front drive

Type of vehicle Van

Colour / colour code Agate Black Metallic

Doors / Seats 4 / 3

Upholstery type Cloth

Colour of upholstery Black

Vehicle with smoke odor no



Vehicle details

Maintenance booklet / proof	digital proof / complete	Next maintenance in	85 %
Last service on / at	03/2026 at 86,568 km		
Key is / should be	1 / 3	FZG documents	ZB#2 (B) was available (copy), ZB#1 (S) was not available.
		Letter No.	GH374014
Previous damage / Accident	Detectable	Repainting	None detectable
Inspection conditions	sufficient	Lifting equipment / pit	yes
Test drive	Not performed	Engine function test	Performed
Manufacturer key number/ type code number	8566 / BUU 00725		
Emission standard	EURO6;WLTP;AQ;PI/CI; N1 II	fine dust sticker	
Permitted total weight	2,290 kg	Empty weight	
Dimensions	- x - x 1859		

Tyres

Mounted tyres

#	Tyre size	Type of tyre	Manufacturer	Tread depth
1)	205/60 R16 96H	Winter tyres on Steel rim with wheel cover	Goodyear	7mm / 7mm
2)	205/60 R16 96H	Winter tyres on Steel rim with wheel cover	Goodyear	7mm / 7mm

Additional tyres

#	Tyre size	Type of tyre	Manufacturer	Tread depth
1)	205/60 R16 96H	Summer tyres on Steel	Continental	6mm / 6mm
2)	205/60 R16 96H	Summer tyres on Steel	Continental	7mm / 7mm

Replacement

Typ	Tyre size	Type of tyre	Manufacturer	Tread depth
Tirefit		Expiration date 09/2025		

Legend: Tread depth information for the left tire is listed first, for the right tire it is listed second on the axle in the direction of travel.



Equipment

Standard equipment

- | | |
|---|--|
| <ul style="list-style-type: none"> • ABS with EBD • Exterior mirrors, electrically adjustable and heated • Battery, reinforced • Rubberized flooring, front • Diesel particulate filter (DPF) • Tachometer • Electronic Safety and Stability Program (ESP) • Ford Easy Fuel • Heated windshield • Transmission: 6-speed transmission • Glove compartment with lid • Front air conditioning including semi-electronic recirculation system • Cargo area lining, side, half-height • Alternator/Generator • Fog light • Radio: Ford Audio System 2 • Wheels: Steel wheels 6.5 J x 16 with 205/60 R 16 tires and wheel trims • Electro-mechanical power steering • Front seat belts are height-adjustable • Seats: Seat package 4 • Start-stop system • Concealed storage compartment on dashboard • Power outlet: 12-volt connection in storage compartment on dashboard (driver's side) • Daytime running light • Child safety lock on sliding doors • Electronic immobilizer (EPATS) • Central locking with remote control | <ul style="list-style-type: none"> • Driver's side airbag • Exterior mirrors, narrow mirror format • Hill start assist • On-board computer including outside temperature display • Double-leaf rear doors without windows • Third brake light • Front electric windows • FordPass Connect • Warranty: 2-year Ford new car warranty including Ford Assistance mobility guarantee • Front interior lighting with delay function • Paint finish: Solid • Cargo area floor protection plastic, molded • Steering column, adjustable in height and reach • Center console, front • Emergency brake light • Wheels: Tire repair kit • Sliding door at rear, right • Side protection strips, plastic • Safety brake assist • Automatic door locking mechanism (45 sec.) • Front spoiler lip • Dust and pollen filter • Power outlet: 12-volt connection on the front center console • Front bumper and rear bumper end caps painted in body color • Partition wall to the cargo area without window • Lashing eyes • Heat-insulating glazing, lightly tinted • Auxiliary electric heater (PTC), front |
|---|--|

Extra equipment

- | | |
|--|--|
| <ul style="list-style-type: none"> • Exterior mirrors with large mirror format • Cruise control • Radio: Ford Audio System 9 • Seats: Seat package 30 • Partition wall to the cargo area with pass-through opening, no window | <ul style="list-style-type: none"> • Remote control: 2nd remote control key for central locking • Rear parking pilot system • Tire pressure monitoring system • Power outlet: 12-volt connection in the charging/luggage compartment |
|--|--|

Brief expert findings

Documents submitted	At the time of the inspection, the vehicle registration certificate Part 2 (title) was available, but the vehicle registration certificate Part 1 (document) was not. (Copy)
VIN comparison	The vehicle identification number (VIN) was read from the vehicle and its conformity with the submitted documents was confirmed by the undersigned during the inspection.
Inspection	The inspection conditions were sufficient for the assessment of the vehicle. Lifting equipment and/or a pit were available for examining the vehicle.
Test drive	No test drive/shunting maneuver was carried out during the inspection of the vehicle.
Engine function test	An engine test run was performed.



Value reducing factors

No.	Component group	Description
1	Wheel / tyres	Wheel cover - rear right side - Scratch(es) - Replace
2	Equipment	Tirefit filler - Expired - Replace
3	Rear bumper	Rear bumper - Broken / torn - Replace
4	Vehicle glazing	Windscreen - Stone chips - repair according to calculation

Wear and tear

No.	Component group	Description
1	Bonnet	Bonnet - Stone chips - No deduction
2	Body	Body - Scratch(es) - No deduction

The vehicle shows signs of wear and tear commensurate with its age and use.

Missing parts

Description

Equipment - Vehicle key with remote control (2x)

Accident damages

No. Accident

1 Front, Side right

Order/Scope of Order

An order was placed to prepare a sales report for the described vehicle. This report includes the following:

- Description of key vehicle information
- Documentation of equipment features
(*Delivery by third-party service providers*)
- Documentation of damage, defects, missing parts
- Documentation of prior damage, unrepaired prior damage, repainting
- A brief visual or functional inspection of the equipment details, if possible.
(*Functional testing of driver assistance systems is not included in the scope of services!*)
- a photographic documentation of the vehicle



Basis for the order

This product is based on the guidelines for vehicle returns and valuations of light commercial vehicles published by Alphabet Fleet Management GmbH. The expert makes the specific findings in each individual case objectively, within the framework of the prescribed standards, based on their own expertise.

The vehicle inspection takes place in a fully assembled, unassembled state.

Damage or defects that can only be detected during disassembly/diagnostic work or through further investigation remain within the realm of prognostic risk. An increased risk exists due to concealed defects caused by fraudulent misrepresentation and which were not identifiable by the expert.

Damage or defects resulting from normal use or wear and tear of the vehicle will be accepted in accordance with the applicable standard.

There was no explicit identification or monetary consideration of the expected features within the product.

Features which, in their nature and extent, slightly exceed normal use but do not constitute unacceptable damage, will be documented and indicated as signs of wear, if applicable.

Damage or defects that, according to the applicable standard, can no longer be attributed to normal use or wear and tear are listed under "Value Reducing Factors" in the product description.

Depending on the product specification, a monetary ID can be provided. If this takes place, the costs can be 100% d or pro rata depending on the vehicle's age and mileage.

Previous damages

Non-repaired previous damages were found at the vehicle. The necessary repair costs are listed in the expert report or if necessary, are listed in detail in a separately enclosed repair cost calculation.

Comments

Die beigefügte Reparaturkostenkalkulation wurde nach bestem Wissen und Gewissen unter eingeschränkten Besichtigungsbedingung im demontagefreien Zustand erstellt. Es können aufgrund verdeckter Beschädigung erhebliche Mehrkosten und somit Abweichung der für den Unfall ausgewiesenen Reparaturkosten nicht ausgeschlossen werden.



Figure 1: Diagonal front (left)



Figure 2: Diagonal front (right)



Figure 3: Diagonal rear (left)



Figure 4: Diagonal rear (right)

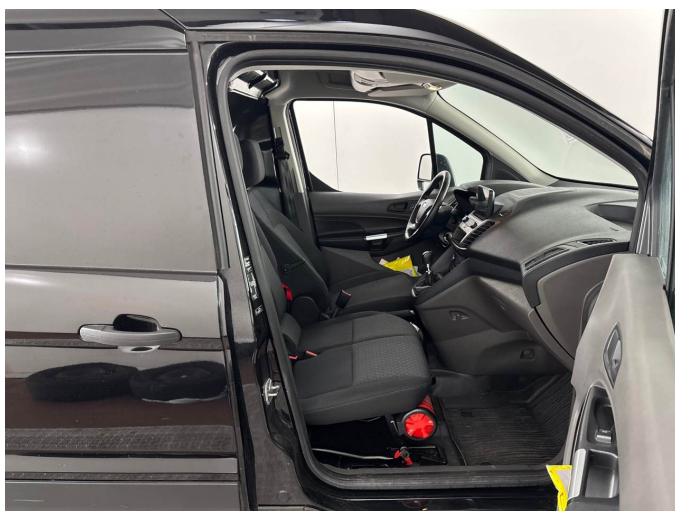


Figure 5: Interior - front



Figure 6: Interior - rear



Figure 7: Instrument cluster



Figure 8: Instrument panel



Figure 9: Interior 360° view



Figure 10: Cargo area

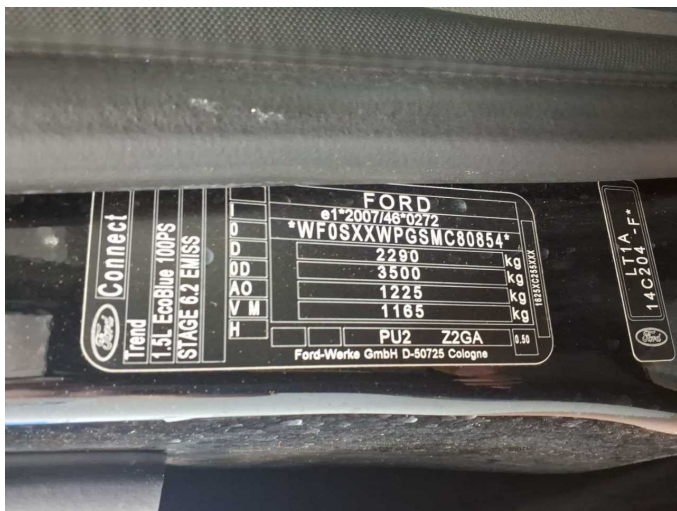


Figure 11: VIN

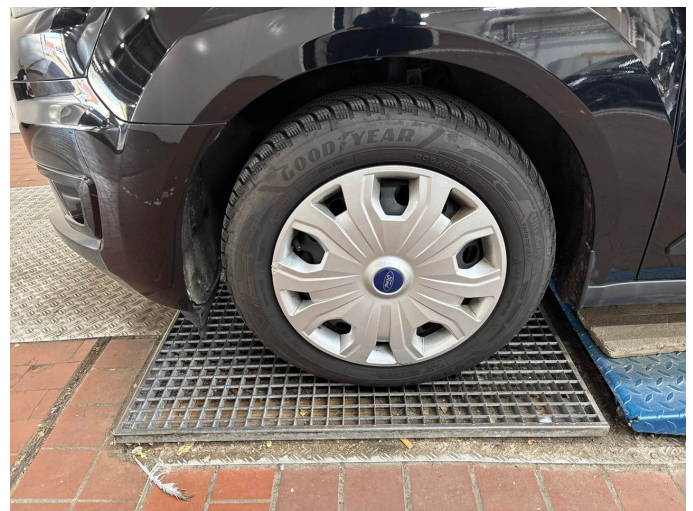


Figure 12: Mounted tyres

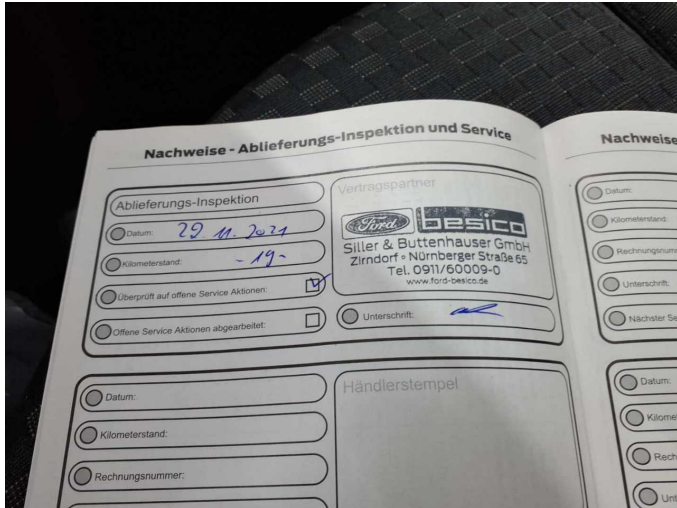


Figure 13: Documents



Figure 14: Documents



Figure 15: Documents

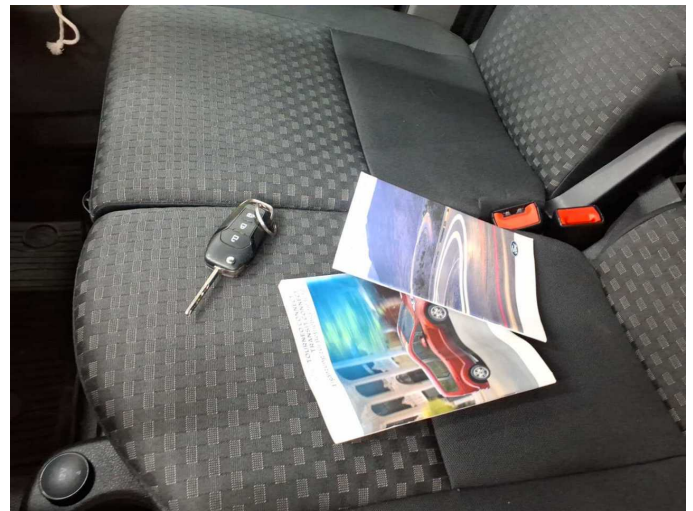


Figure 16: Documents

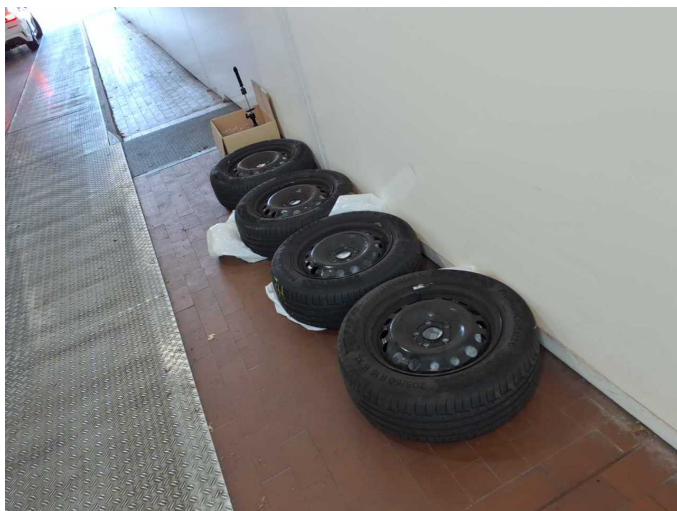


Figure 17: Additional tyres



Figure 18: Navigation



Figure 19: Misc.



Figure 20: Misc.



Figure 21: Misc.



Figure 22: Misc.



Figure 23: Misc.

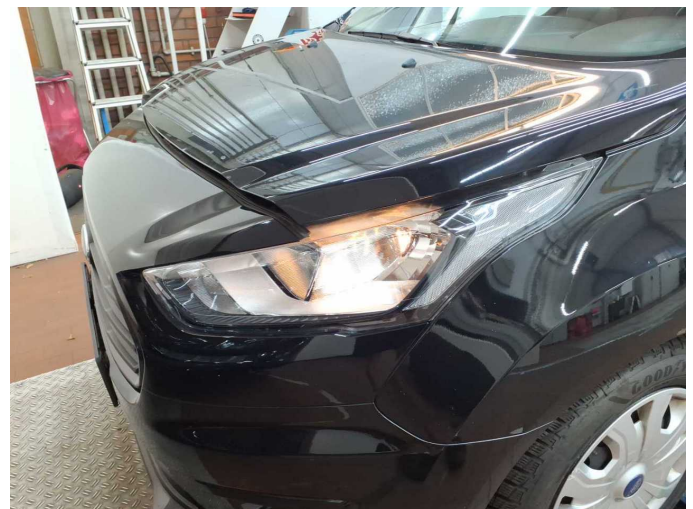


Figure 24: Misc.



Figure 25: Misc.



Figure 26: Misc.



Figure 27: Misc.



Figure 28: Misc.



Figure 29: Misc.



Figure 30: Misc.



Figure 31: Misc.



Damage 1: Wheel / tyres: Wheel cover - rear right side - Scratch(es) - Replace



Damage 1: Wheel / tyres: Wheel cover - rear right side - Scratch(es) - Replace



Damage 1: Wheel / tyres: Wheel cover - rear right side - Scratch(es) - Replace



Damage 1: Wheel / tyres: Wheel cover - rear right side - Scratch(es) - Replace



Damage 2: Equipment: Tirefit filler - Expired - Replace



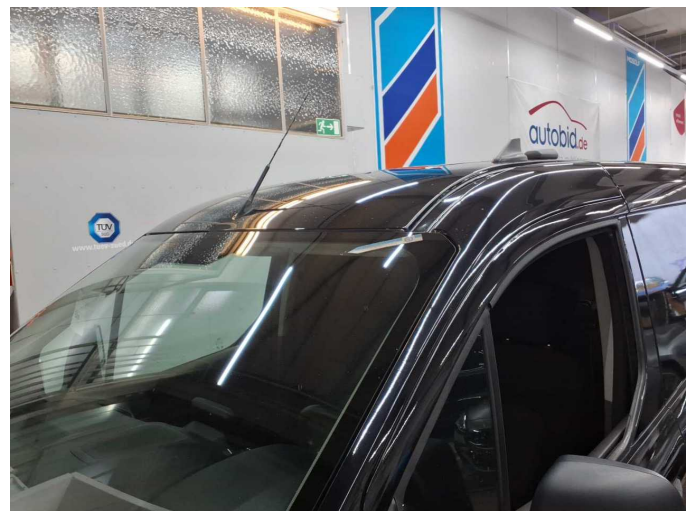
Damage 3: Rear bumper: Rear bumper - Broken / torn - Replace



Damage 3: Rear bumper: Rear bumper - Broken / torn - Replace



Damage 3: Rear bumper: Rear bumper - Broken / torn - Replace



Damage 4: Vehicle glazing: Windscreen - Stone chips - repair according to calculation



Damage 4: Vehicle glazing: Windscreen - Stone chips - repair according to calculation



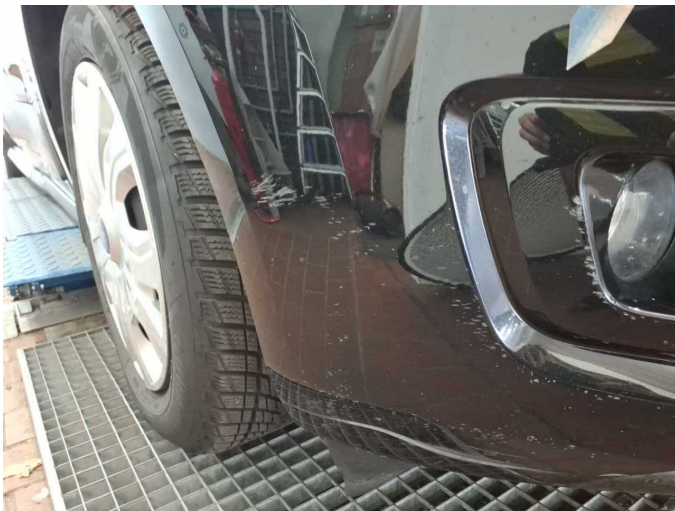
Damage 4: Vehicle glazing: Windscreen - Stone chips - repair according to calculation



Accident 1: Front, Side right



Accident 1: Front, Side right



Accident 1: Front, Side right



Accident 1: Front, Side right



Accident 1: Front, Side right



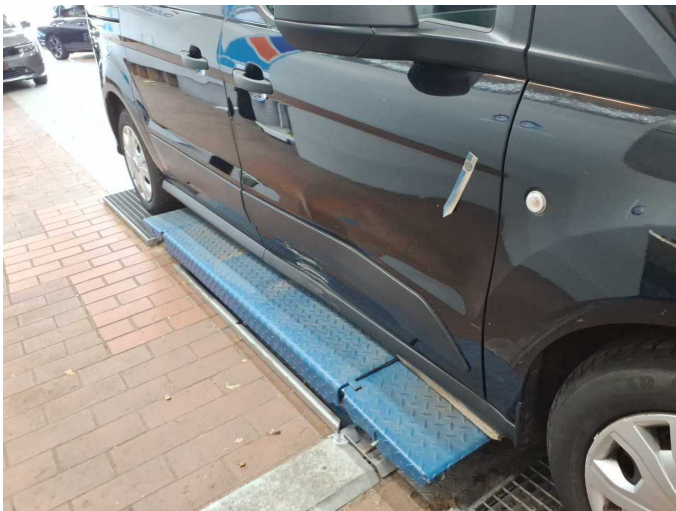
Accident 1: Front, Side right



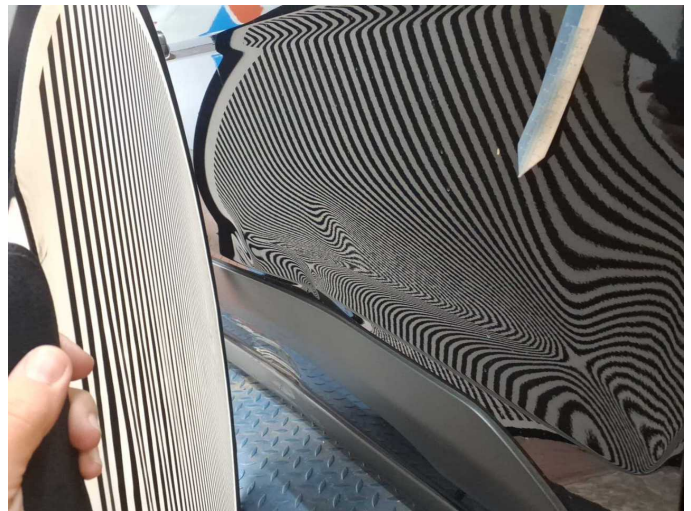
Accident 1: Front, Side right



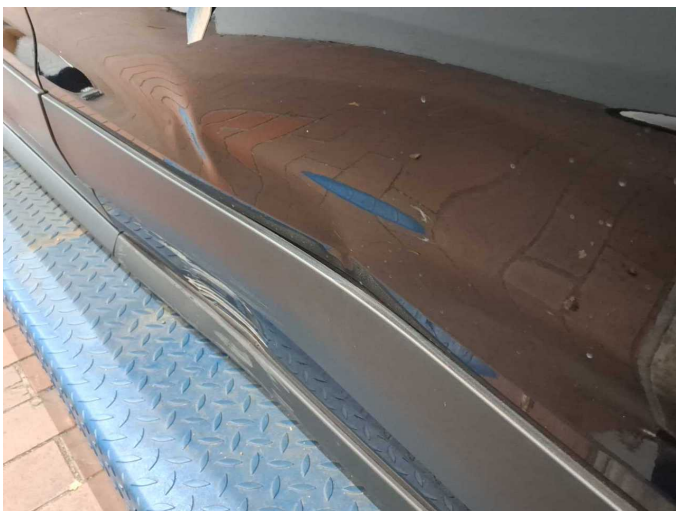
Accident 1: Front, Side right



Accident 1: Front, Side right



Accident 1: Front, Side right



Accident 1: Front, Side right



Accident 1: Front, Side right



Accident 1: Front, Side right



Accident 1: Front, Side right



Accident 1: Front, Side right



Accident 1: Front, Side right



Accident 1: Front, Side right



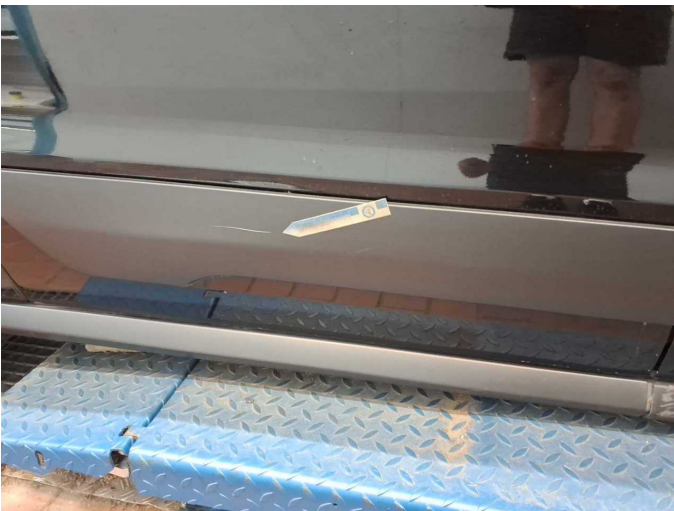
Accident 1: Front, Side right



Accident 1: Front, Side right



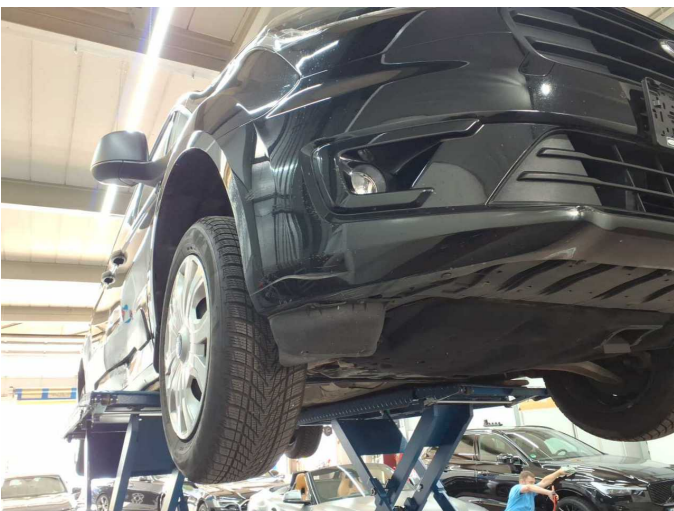
Accident 1: Front, Side right



Accident 1: Front, Side right



Accident 1: Front, Side right



Accident 1: Front, Side right



Accident 1: Front, Side right



Wartungshistorie

(gemäß Auftraggeber Informationen)

Fahrgestellnummer: WF0SXXWPGSMC80854

Hersteller / Modell: FORD FORD Transit Connect 210 L2 S&S Trend

Datum	KM-Stand	Beschreibung
14.03.2026	86.568	Motoröl b. Wartung; Ölfilter ern; Regelwartungsdienst; Wartung Sonstiges
31.01.2026	83.642	AU; Bremse Sonstiges; Bremsklötze vorne; Bremsscheiben + Klötze v; Bremsscheiben vorne
22.12.2025	81.203	AU
22.02.2025	57.060	Bremse Sonstiges; Bremsflüssigkeit; Bremsflüssigkeit ern; Bremsklötze hinten; Bremsscheiben + Klötze h; Bremsscheiben hinten; Kraftstofffilter ern; Luftfiltereinsatz ern; Motoröl b. Wartung; Ölfilter ern; Regelwartungsdienst; Wartung Sonstiges
08.08.2024	44.300	Batterie ern; Systemtest/Eigendiagnose
30.11.2023	42.116	HU + AU
27.01.2023	29.580	Motoröl b. Wartung; Ölfilter ern; Regelwartungsdienst; Wartung Sonstiges