

Expertise

Protocol number: 45913286
Order No. / Reference: 26361935
Inspection date: 12 Jun 2026

Manufacturer: Skoda

Model: Octavia Combi 2.0 TDI DSG Style

VIN: TMBJJ0NXXMY192056



Vehicle details

Manufacturer / Type / Model / Equipment

Skoda Octavia Combi 2.0 TDI DSG Style

Vehicle Identification number TMBJJ0NXXMY192056

Mileage (Read) 110,993 km

First registration 7 Dec 2021

Number of holders 1

Next periodical technical inspection 12/2026
(Report on hand)

Power / Engine displacement 110 kw / 1,968 ccm

Fuel type / Cylinder Diesel / 4

Gearbox / Number of gears Automatic / 7

Type of drive Front drive

Type of vehicle Station wagon

Colour / colour code Black Magic Pearlescent
(F9R)

Doors / Seats 5 / 5

Upholstery type Leather

Colour of upholstery Black

Re-import no

readiness to drive Roadworthy



| Vehicle details | | | |
|--|------------------------------|--------------------------------|--|
| Maintenance booklet / proof | digital proof / complete | Next maintenance in | 2,800 km |
| Last service on / at | 09/2024 at 83,769 km | | |
| Key is / should be | 3 / 3 | FZG documents | ZB#2 (B) was available (copy), ZB#1 (S) was not available. |
| | | Letter No. | GG197924 |
| Previous damage / Accident | Detectable | Repainting | None detectable |
| Inspection conditions | sufficient | Lifting equipment / pit | yes |
| Test drive | Not performed | Engine function test | Performed |
| readiness to drive | Roadworthy | | |
| Manufacturer key number/ type code number | 8004 / AWL 00079 | | |
| Emission standard | EURO6;WLTP;AP;PI/CI; M, N1 I | fine dust sticker | |
| Permitted total weight | 1,990 kg | Empty weight | |

Tyres

| Mounted tyres | | | | |
|---------------|----------------|-----------------------------|--------------|-------------|
| # | Tyre size | Type of tyre | Manufacturer | Tread depth |
| 1) | 205/55 R17 91H | Winter tyres on Light alloy | Bridgestone | 4mm / 4mm |
| 2) | 205/55 R17 91H | Winter tyres on Light alloy | Bridgestone | 6mm / 6mm |

| Additional tyres | | | | |
|------------------|----------------|-----------------------------|--------------|-------------|
| # | Tyre size | Type of tyre | Manufacturer | Tread depth |
| 1) | 205/55 R17 91V | Summer tyres on Light alloy | Michelin | 5mm / 5mm |
| 2) | 205/55 R17 91V | Summer tyres on Light alloy | Michelin | 5mm / 5mm |

| Replacement | | | | |
|-------------|------------|-----------------------|--------------|-------------|
| Typ | Tyre size | Type of tyre | Manufacturer | Tread depth |
| N | 125/70 R18 | Summer tyres on Steel | | 3 mm |

Legend: Tread depth information for the left tire is listed first, for the right tire it is listed second on the axle in the direction of travel.



Equipment

Standard equipment

- Storage compartment in the luggage compartment with cargo element
- Airbag, driver's knee airbag
- Airbag, front side airbags
- Anti-lock braking system (ABS)
- Center section of the dashboard with fabric covering
- Electrically adjustable and heated exterior mirrors
- Electrically folding exterior mirrors
- Hill start assist including auto-hold function
- Hydraulic brake assist (HBA)
- Grey headliner
- Decorative strip in silver finish with ambient lighting
- Digital instrument cluster (Virtual Cockpit) 10.2"
- Third brake light
- Electronic transverse differential lock (XDS+)
- Driving light assistant
- Electric windows front and rear, including anti-pinch protection and child safety lock
- Cruise control system
- Tinted windows
- Heated rear window
- Rear window wiper including windshield washer system
- ISOFIX preparations on the front passenger seat and the outer rear seats including top tether anchorage
- Climatronic air conditioning (2-zone)
- Headrests (5) front and rear height adjustable
- LED taillights in crystal glass look and animated turn signals
- Remote release of the rear seat backrests in the trunk
- Steering wheel: Leather steering wheel with multifunction buttons and paddle shifters.
- Front center armrest, including storage compartment
- Front and rear parking sensors
- Radio accessories: 2 USB-C ports on the front
- Radio accessories: 8 speakers
- Radio accessories: Digital radio reception DAB+
- Radio accessories: Voice control
- Tire pressure monitoring
- Electromechanical power steering
- Seat belts
- Seats: Heated front seats
- Seats: Height-adjustable driver and passenger seats
- Seats: Rear seat backrest split 60:40, foldable
- Speed limiter
- Lane change and parking assist as well as exit warning
- Telephone: Phonebox with inductive charging function (connection via external antenna)
- Immobiliser
- Storage compartments
- Airbag, driver and passenger
- Airbag, head airbags
- Ambient lighting
- Traction control (ASR)
- Automatically dimming exterior mirror (driver's side)
- Exterior mirrors with memory function
- Heated windshield washer nozzles including 5l washer fluid reservoir
- Glasses compartment in the headliner
- Roof rails, anodized
- Diesel particulate filter
- Tachometer
- Electronic parking brake
- Electronic Stability Control (ESC)
- Driving profile selection
- Front radar assistant including city emergency braking function and pedestrian and cyclist detection
- Transmission: 7-speed dual-clutch transmission (DSG)
- Green tec: Start/stop system including brake energy recuperation
- Interior mirror automatically dimming
- Kessy, keyless entry and start-stop system
- Child safety lock for the rear doors and windows
- Removable boot cover
- LED fog lights
- LED license plate lights
- LED headlights with LED daytime running lights
- Steering wheel: height and reach adjustable
- Manual headlight range adjustment
- Rear center armrest with pass-through option
- Engine drag torque control (MSR)
- Radio: Bolero music system with capacitive 10" color display
- Radio accessories: Bluetooth hands-free system
- Radio accessories: SmartLink
- Rain sensor
- Wheels: 17" alloy wheels Rotare AERO (7J x 17, ET 46 with tires 205/55 R17)
- Safety lights in the front side doors
- Seats: Electrically adjustable front seats with memory function
- SKODA Care Connect
- Lane keeping assistant (Lane Assist)
- 12V socket in the trunk
- Phone: Wireless SmartLink for Apple CarPlay
- Lashing eyes in the trunk
- Central locking including remote control integrated into the key and EASY Start



Extra equipment

- Swiveling trailer hitch including trailer stabilization and adapter
- Luggage net partition
- Comfort opening with electric tailgate operation (Combi) (incl. semi-automatic luggage compartment cover)
- Package: Infotainment Columbus Plus (Columbus navigation system - Infotainment Online (3-year term) - Head-Up Display)
- Package: Parking & Visibility WP1
- Package: Travel & Comfort (DSG) WA2
- Package: Travel Plus (DSG) (Traveller assistance system: - Traffic sign recognition - Predictive and adaptive cruise control (pACC) - Adaptive lane keeping assist - Emergency and traffic jam assist (with DSG) - Capacitive steering wheel with hands-off detection - Adaptive cruise control (ACC) (control range 210 km/h) - Driver fatigue detection - Driving profile selection - Adaptive chassis control (DCC) - Automatically dimming exterior mirror (driver's side))
- Seats: Electrically adjustable ergonomic comfort seats in the front (AGR seal of approval) (Massage function - Extendable leg rest - Seat ventilation - Leather interior (combined with high-quality materials) - Center airbag)
- Heated windscreen
- Decorative trim in piano black
- Anti-theft alarm system including safe system with interior monitoring and tilt sensor
- Paint finish: Pearl effect
- Steering wheel: Heated steering wheel in a sporty design with paddle shifters
- Package: Comfort WK1
- Package: Parking & Lighting (for Sportline, Style) (cornering lights in the fog lights - headlight cleaning system - matrix headlights - reversing camera - parking assist)
- Package: Safety (Style, Sportline) (Drowsiness detection - Front center airbag - Rear side airbags - Proactive occupant protection with rear impact detection)
- Package: Simply Clever PKC
- Radio accessories: CANTON sound system and 18" steel spare wheel (12 speakers (10 speakers, 1 central speaker, 1 subwoofer in the spare wheel well) - 18" steel spare wheel (tire 125/70 R18) including jack and wheel wrench)
- Auxiliary heater with radio remote control
- 230V socket and USB charging port (230V socket and 2 x USB charging ports in the rear as well as USB charging port in the rearview mirror)

Brief expert findings

| | |
|----------------------|--|
| Documents submitted | At the time of the inspection, the vehicle registration certificate Part 2 (title) was available, but the vehicle registration certificate Part 1 (document) was not. (Copy) |
| VIN comparison | The vehicle identification number (VIN) was read from the vehicle and its conformity with the submitted documents was confirmed by the undersigned during the inspection. |
| Inspection | The inspection conditions were sufficient for the assessment of the vehicle. Lifting equipment and/or a pit were available for examining the vehicle. |
| Test drive | No test drive/shunting maneuver was carried out during the inspection of the vehicle. |
| Engine function test | An engine test run was performed. |
| readiness to drive | The vehicle was roadworthy at the time of inspection. |

Value reducing factors

| No. | Component group | Description |
|-----|-----------------------|---|
| 1 | Equipment | Vehicle key - Empty - Replace |
| 2 | Bonnet | Bonnet - dent(s) - Smart repair |
| 3 | Roof | Roof - dent(s) - Smart repair |
| 4 | 2nd wheel set | 1 tyre - Broken / torn - Replace |
| 5 | Electrical system | Battery (Laden oder erneuern, Mehrkosten möglich) - Empty - Diagnosed and repair if necessary |
| 6 | Rear bumper | Rear bumper - Scratch(es) - Smart repair |
| 7 | Door - rear left side | Door - Scratch(es) - Smart repair |
| 8 | Front bumper | Front bumper - Scratch(es) - Smart repair |



Wear and tear

| No. | Component group | Description |
|-----|-----------------|--|
| 1 | Wheel / tyres | Tyre - front - Does not meet the leasing specifications - No deduction |

The vehicle shows signs of wear and tear commensurate with its age and use.

Previous damages

| No. | Previous damage | Extent of damage (Net) |
|-----|---|------------------------|
| 1 | Rear, Provided by user / customer, from 18 Feb 2025 | 4.311,23 € |

Order/Scope of Order

An order was placed to prepare a sales report for the described vehicle. This report includes the following:

- Description of key vehicle information
- Documentation of equipment features
(*Delivery by third-party service providers*)
- Documentation of damage, defects, missing parts
- Documentation of prior damage, unrepaired prior damage, repainting
- A brief visual or functional inspection of the equipment details, if possible.
(*Functional testing of driver assistance systems is not included in the scope of services!*)
- a photographic documentation of the vehicle

Basis for the order

This product is based on the guidelines for vehicle returns and valuations published by Alphabet Fleet GmbH. The expert makes the specific findings in each individual case objectively, within the framework of the prescribed standards, based on their own expertise.

The vehicle inspection takes place in a fully assembled, unassembled state.

Damage or defects that can only be detected during disassembly/diagnostic work or through further investigation remain within the realm of prognostic risk. An increased risk exists due to concealed defects caused by fraudulent misrepresentation and which were not identifiable by the expert.

Damage or defects resulting from normal use or wear and tear of the vehicle will be accepted in accordance with the applicable standard.

There was no explicit identification or monetary consideration of the expected features within the product.

Features which, in their nature and extent, slightly exceed normal use but do not constitute unacceptable damage, will be documented and indicated as signs of wear, if applicable.

Damage or defects that, according to the applicable standard, can no longer be attributed to normal use or wear and tear are listed under "Value Reducing Factors" in the product description.

Depending on the product specification, a monetary ID can be provided. If this takes place, the costs can be 100% d or pro rata depending on the vehicle's age and mileage.

Previous damages

According to available information previous damages were repaired at the vehicle. Traces of repairs, which allow conclusions about the area of repair, were not recognizable during the inspection.

Comments

- Für den montierten Radsatz wurde kein Nachweis erbracht.
- Winterradsatz ist kein Bestandteil des Auslieferungsumfangs.



Figure 1: Diagonal front (left)



Figure 2: Diagonal front (right)



Figure 3: Diagonal rear (left)



Figure 4: Diagonal rear (right)

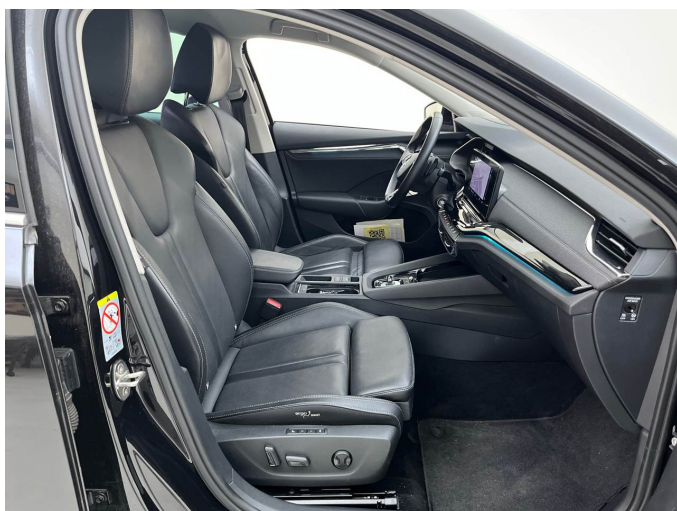


Figure 5: Interior - front



Figure 6: Interior - rear



Figure 7: Instrument cluster



Figure 8: Instrument panel



Figure 9: Interior 360° view



Figure 10: Cargo area

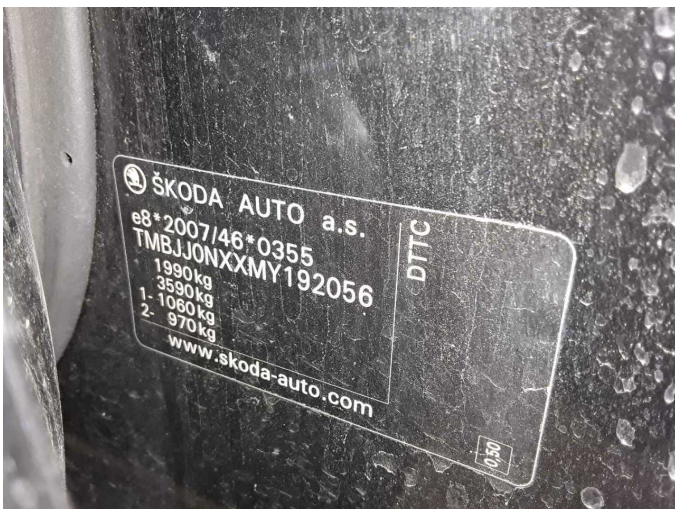


Figure 11: VIN



Figure 12: Mounted tyres

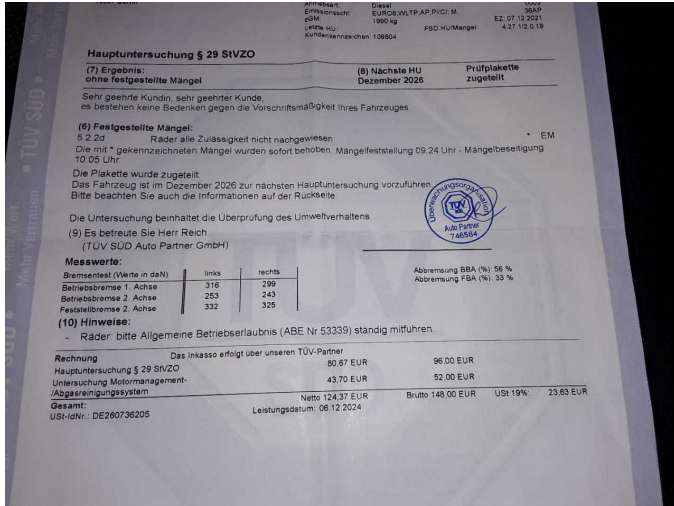


Figure 13: Documents



Figure 14: Documents



Figure 15: Documents



Figure 16: Documents



Figure 17: Documents

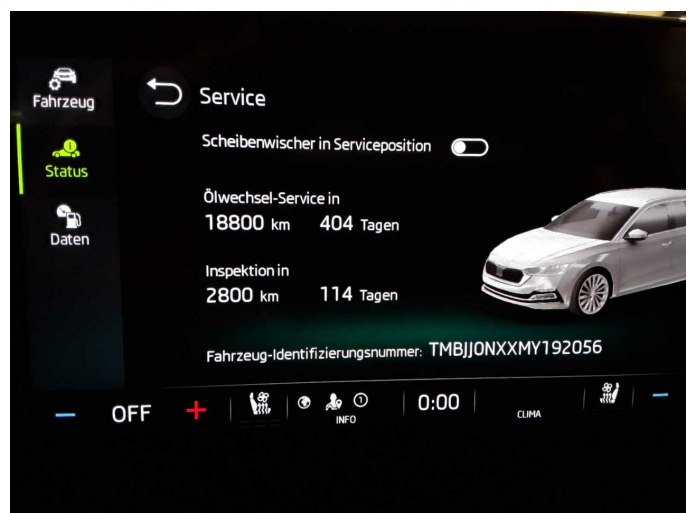


Figure 18: Documents



Figure 19: Additional tyres



Figure 20: Navigation



Figure 21: Misc.

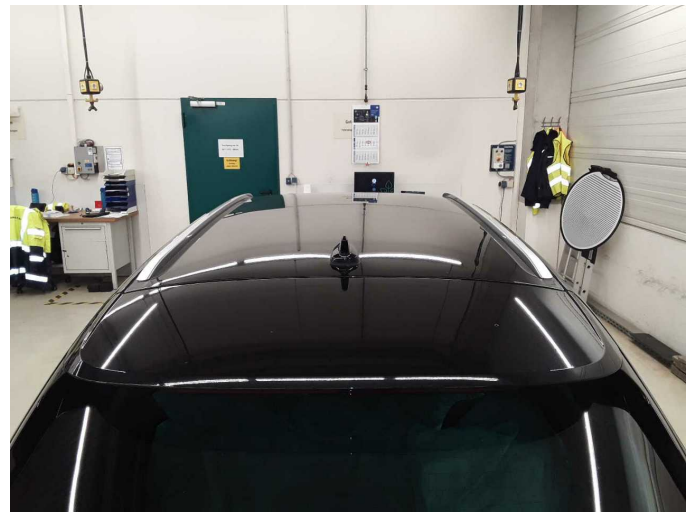


Figure 22: Misc.

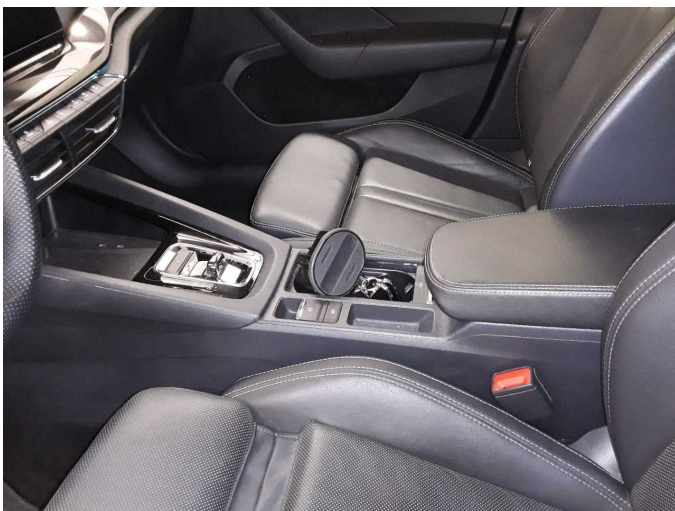


Figure 23: Misc.



Figure 24: Misc.



Figure 25: Misc.



Figure 26: Misc.



Figure 27: Misc.

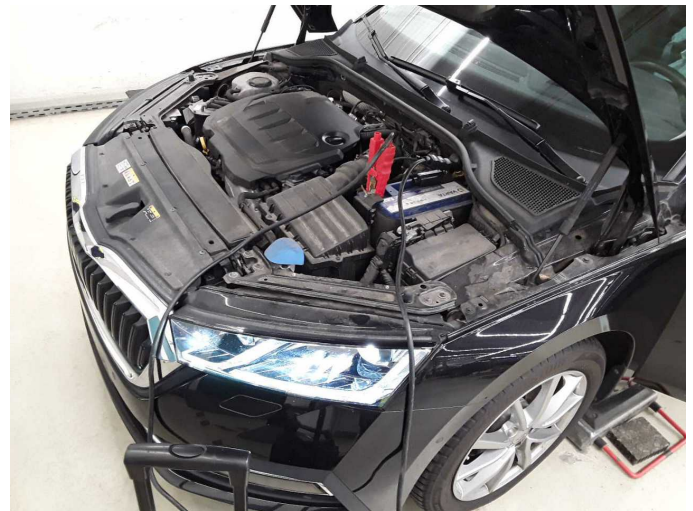


Figure 28: Misc.



Figure 29: Misc.

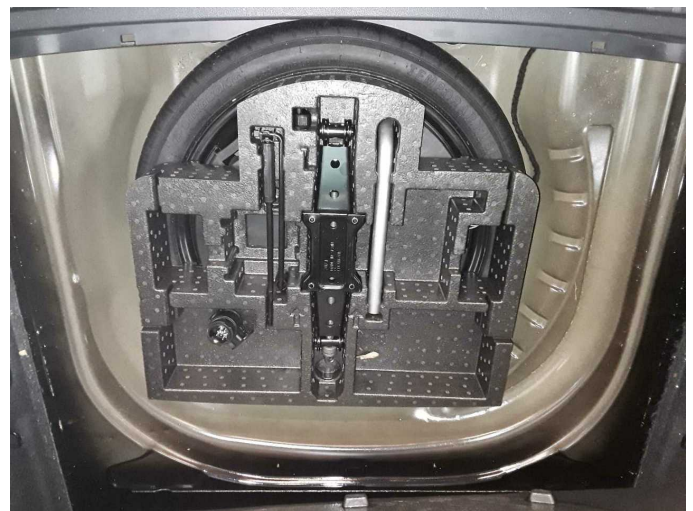


Figure 30: Misc.



Figure 31: Misc.



Figure 32: Misc.



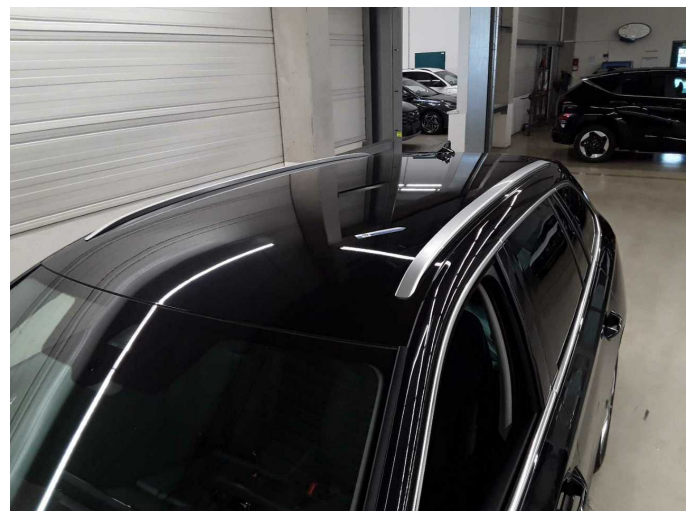
Figure 33: Misc.



Damage 1: Equipment: Vehicle key - Empty - Replace



Damage 2: Bonnet: Bonnet - dent(s) - Smart repair



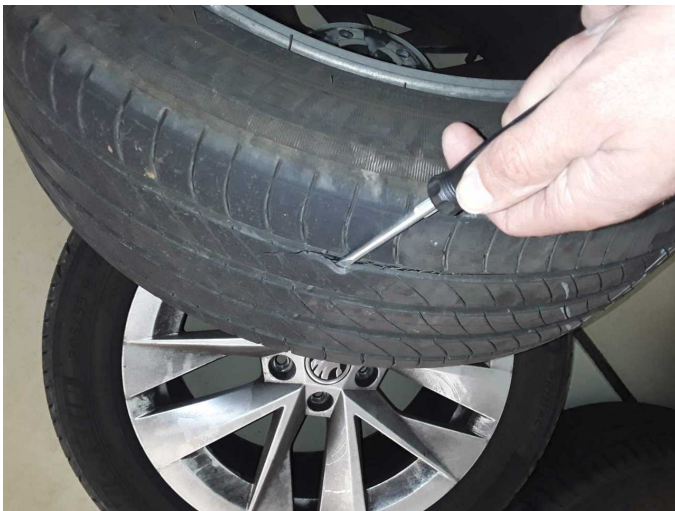
Damage 3: Roof: Roof - dent(s) - Smart repair



Damage 3: Roof: Roof - dent(s) - Smart repair



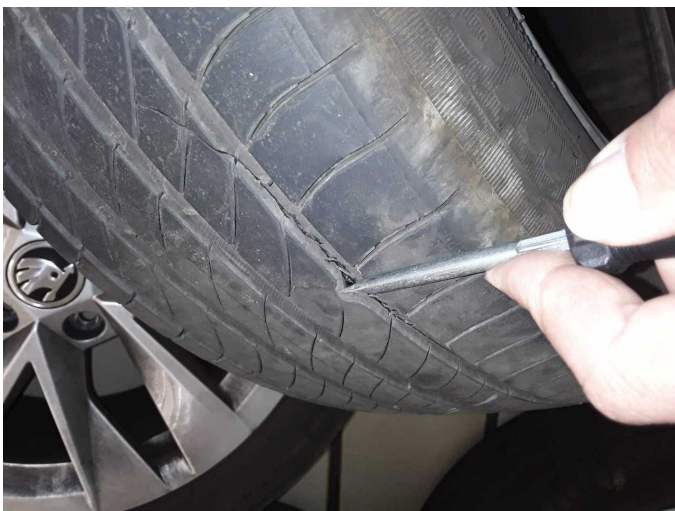
Damage 3: Roof: Roof - dent(s) - Smart repair



Damage 4: 2nd wheel set: 1 tyre - Broken / torn - Replace



Damage 4: 2nd wheel set: 1 tyre - Broken / torn - Replace



Damage 4: 2nd wheel set: 1 tyre - Broken / torn - Replace



Damage 4: 2nd wheel set: 1 tyre - Broken / torn - Replace



Damage 6: Rear bumper: Rear bumper - Scratch(es) - Smart repair



Damage 6: Rear bumper: Rear bumper - Scratch(es) - Smart repair



Damage 7: Door - rear left side: Door - Scratch(es) - Smart repair



Damage 7: Door - rear left side: Door - Scratch(es) - Smart repair



Damage 8: Front bumper: Front bumper - Scratch(es) - Smart repair



Damage 8: Front bumper: Front bumper - Scratch(es) - Smart repair



Wartungshistorie

(gemäß Auftraggeber Informationen)

Fahrgestellnummer: TMBJJONXXMY192056

Hersteller / Modell: SKODA SKODA Octavia Combi 2.0 TDI DSG Style

| Datum | KM-Stand | Beschreibung |
|------------|----------|---|
| 06.12.2024 | 86.481 | AU |
| 23.10.2024 | 89.120 | Kraftstofffilter ern; Luftfiltereinsatz ern |
| 19.09.2024 | 83.769 | Bremsflüssigkeit ern; Regelwartungsdienst |
| 06.09.2024 | 82.666 | Motoröl b. Wartung; Ölfilter ern; Ölwechsel; Wartung Sonstiges |
| 17.05.2024 | 73.881 | Bremse Sonstiges; Bremsklötze vorne; Bremsscheiben + Klötze v; Bremsscheiben vorne |
| 15.03.2024 | 67.863 | Systemtest/Eigendiagnose |
| 16.08.2023 | 53.105 | Motoröl b. Wartung; Ölfilter ern; Regelwartungsdienst; Wartung Sonstiges |
| 08.05.2023 | 48.569 | Batterie ern |
| 02.08.2022 | 37.471 | Motoröl b. Wartung; Regelwartungsdienst |