

## Expertise

Protocol number: 46009276  
Order No. / Reference: 26409473  
Inspection date: 17 Jun 2026

Manufacturer: Mercedes-Benz

Model: C 300 e T 9G-TRONIC AMG Line

VIN: W1KAH5EB9PF106366



### Vehicle details

#### Manufacturer / Type / Model / Equipment

Mercedes-Benz C 300 e T 9G-TRONIC AMG Line

**Vehicle Identification number** W1KAH5EB9PF106366

**Mileage (Read)** 63,909 km

**First registration** 6 Apr 2023

**Number of holders** 1

**Power / Engine displacement** 150 kw / 1,999 ccm

**Fuel type / Cylinder** Hybr.B/E ext.auf / 4

**Gearbox / Number of gears** Automatic / 9

**Type of drive** Rear drive

**Type of vehicle** Station wagon

**Colour / colour code** Graphitgrau Metallic

**Doors / Seats** 5 / 5

**Upholstery type** Cloth / leather  
combination

**Colour of upholstery** Black



## Vehicle details

<b>Maintenance booklet / proof</b>	digital proof / complete	<b>Next maintenance in</b>	145 Tag(e)
<b>Last service on / at</b>	09/2025 at 51,041 km		
<b>Key is / should be</b>	2 / 2	<b>FZG documents</b>	ZB#2 (B) was available (copy), ZB#1 (S) was not available.
		<b>Letter No.</b>	GS697668
<b>Previous damage / Accident</b>	None detectable	<b>Repainting</b>	None detectable
<b>Inspection conditions</b>	sufficient	<b>Lifting equipment / pit</b>	No
<b>Test drive</b>	Not performed	<b>Engine function test</b>	Performed
<b>Manufacturer key number/ type code number</b>	2222 / BEP 00071		
<b>Emission standard</b>	EURO6;WLTP;AP;PI/CI; M, N1 I	<b>fine dust sticker</b>	
<b>Permitted total weight</b>	2,655 kg	<b>Empty weight</b>	

## Tyres

### Mounted tyres

#	Tyre size	Type of tyre	Manufacturer	Tread depth
1)	225/45 R18 95Y	Summer tyres on Light alloy	Michelin	4mm / 4mm
2)	255/40 R18 99Y	Summer tyres on Light alloy	Michelin	5mm / 5mm

### Additional tyres

#	Tyre size	Type of tyre	Manufacturer	Tread depth
1)	225/45 R18 95V	Winter tyres on Light alloy	Bridgestone	1mm / 1mm
2)	255/40 R18 99H	Winter tyres on Light alloy	Bridgestone	6mm / 6mm

**Legend: Tread depth information for the left tire is listed first, for the right tire it is listed second on the axle in the direction of travel.**



## Equipment

### Standard equipment

- Airbag for driver and front passenger
- Airbag: Center airbag
- Airbag: Windowbag for driver and front passenger
- Ambient lighting with 64 light colors
- AMG sports pedal assembly made of brushed stainless steel with rubber studs
- Basic services
- black roof rails
- DYNAMIC SELECT
- ECO start/stop function
- Electric windows (4-way)
- Transmission: 9-speed automatic, 9G-TRONIC
- Heated rear window
- ISOFIX child seat attachment with top tether in the rear
- KEYLESS-GO start function
- THERMATIC automatic climate control with 2 climate zones
- Front headrests
- Cargo area cover including EASY-PACK safety net
- Charging system: AC charging system 11kW
- Steering wheel: Multifunction sports steering wheel in Nappa leather
- Mercedes-Benz emergency call system
- Otto particulate filter
- Package: Interior lighting package
- Upholstery: ARTICO leatherette/MICROCUT microfiber
- Radio: MBUX
- Radio accessories: Communication module (LTE) for using Mercedes me connect services
- Remote Services Plus
- Windscreen wipers with rain sensor
- Seats: Rear seat backrests foldable
- Cruise control
- Electronic immobilizer
- Decorative elements, metal structure
- Airbag: Automatic passenger airbag deactivation
- Airbag: Side airbag for driver and front passenger
- Acoustic environmental protection
- AMG floor mats
- Left and right exterior mirrors are heated and electrically adjustable
- Brake assist, active
- Double cup holder at the front
- EASY-PACK tailgate
- Electronic Stability Program (ESP)
- Speed Limit Assistant
- rear window wiper
- Instrument panel and door sills in ARTICO man-made leather in black nappa look
- Mechanical child safety lock for the rear doors
- Rear headrests (3)
- Charging cable for household socket, 5m, smooth (This charging cable, also called Mode 2 cable, allows you to charge the vehicle battery at the household socket with up to 1.8 kW (230 V, 1-phase, 8A) and fits sockets of type E/F CEE 7/7)
- Center console in high-gloss black
- Package: Storage
- Package: Park
- Radio: Extended MBUX functions
- Radio accessories: Digital radio (DAB)
- Radio accessories: Central display
- Tire pressure monitoring system (TPMS)
- Wheels: 45.7 cm (18") AMG light-alloy wheels in a 5-spoke design
- Lane Keeping Assist, active
- High-visibility vest for drivers
- Central locking with remote control



## Extra equipment

- Center console diamond pattern silver grey
- Package: Advanced Comfort Package (Heated seats for driver and front passenger - Seat Comfort Package: - Numerous electric and manual adjustment options for the front seats to adapt to the specific body and comfort requirements of the driver and front passenger - Electro-pneumatic 4-way lumbar support and lateral support adjustment with control element on the seat - Electric seat cushion tilt adjustment - Electric height adjustment - Electric backrest adjustment - Electric seat cushion depth adjustment - Mechanical longitudinal adjustment - Mechanical headrest adjustment)
- Package: Driving Assistance Package Plus (Active Distance Assist DISTRONIC, Active Speed Limit Assist, Extended Automatic Restart on Highways, Route-Based Speed Adaptation with Traffic Jam End Function, Active Traffic Jam Assist, Active Steering Assist, Active Lane Change Assist, Active Emergency Stop Assist, Emergency Lane Function, Active Brake Assist with Vehicle, Bicycle and Pedestrian Detection; Intersection Function, Turn Function, Traffic Jam End Emergency Braking Function, Evasive Steering Assist, Active Lane Keeping Assist, Active Blind Spot Assist, PRE-SAFE Impulse Side)
- Package: Night (300e Estate with AMG Line Exterior) (Radiator grille: diamond grille with silver pins and high-gloss black louvre. AMG front apron with high-gloss black wing trim. Rear bumper with high-gloss black wing trim. Belt trim strip and window surrounds in high-gloss black. Exterior mirror housings in high-gloss black. Heat-insulating dark-tinted rear glass (from the B-pillar). Roof rails in black.)
- Seats: Sports seats
- Telephone accessories: Wireless charging system for mobile devices (wireless charging according to Qi standard for compatible mobile phones - fast connection setup between multimedia system and mobile phone via Near Field Communication (NFC) for identification of the mobile device - storage compartment for wireless charging is located in the storage compartment at the front of the center console)
- Charging cable for wallbox and public charging station, 5m, smooth 11kW (This charging cable, also called Mode 3 cable, allows you to charge the vehicle battery at the wallbox or at public charging stations with up to 11 kW (Type 2, 3-phase, 16 A).)
- Decorative elements in diamond pattern, silver-grey
- Heat-insulating dark tinted glass
- Package: Advanced Light Package (DIGITAL LIGHT: -HD system with projection module (more than 1.3 million pixels per headlight) and MULTIBEAM LED background module -Adaptive Highbeam Assist Plus -ULTRA RANGE high beam with a range of more than 600 m -Topography compensation -Cornering light with roundabout and intersection function -Active curve light with predictive control -Extended fog light, city light, country road light, motorway light, motorway high beam and bad weather light)
- Package: High-End Infotainment Package (MBUX Navigation Premium (hard drive navigation, pre-installation for Live Traffic Information), Traffic Sign Assist, Smartphone Integration (connects the mobile phone wirelessly to the multimedia system via Apple CarPlay and Android Auto), Wireless charging system for mobile devices in the front, Driver display - 31.2 cm (12.3") color LCD display, Central display - 30.2 cm (11.9") touch display, MBUX Augmented Reality for navigation.)
- Package: Mirror package (both exterior mirrors electrically folding (button in the driver's door control panel) - interior mirror and exterior mirror on the driver's side automatically dimming continuously - ambient lighting of the exterior mirror to illuminate the entry area with projection of the Mercedes-Benz logo)
- Package: Public Charging (charging cable for wallbox and public charging stations, 5m, smooth (charging the vehicle battery at the wallbox or at public charging stations with up to 11 kW (Type 2, 3-phase, 20 A)) - Remote and Charging Services Plus)
- Paint finish: Metallic

## Brief expert findings

Documents submitted	At the time of the inspection, the vehicle registration certificate Part 2 (title) was available, but the vehicle registration certificate Part 1 (document) was not. (Copy)
VIN comparison	The vehicle identification number (VIN) was read from the vehicle and its conformity with the submitted documents was confirmed by the undersigned during the inspection.
Inspection	The inspection conditions were sufficient for the assessment of the vehicle. No lifting equipment or pit was available for inspecting the vehicle. Therefore, inspection of the vehicle's underside was only possible to a limited extent.
Test drive	No test drive/shunting maneuver was carried out during the inspection of the vehicle.
Engine function test	An engine test run was performed.



## Value reducing factors

No.	Component group	Description
1	Side panel - rear right side	Side panel - Scratch(es) - Smart repair
2	Front bumper	Front bumper - Scratch(es) - Smart repair
3	Wheel / tyres	Alloy rim - front right side - Scratch(es) - Loss in value

## Wear and tear

No.	Component group	Description
1	Mudguard - left side	Mudguard - left side - Scratch(es) - No deduction
2	Equipment	Vehicle key - Scratch(es) - No deduction
3	Interior	Interior - Scratch(es) - No deduction
4	Sill - left side	Sill - Scratch(es) - No deduction
5	Vehicle glazing	Windscreen - Stone chips - No deduction
6	Bonnet	Bonnet - Stone chips - No deduction
7	Wheel / tyres	Alloy rim - front right side - Scratch(es) - No deduction
8	2nd wheel set	2 tyres (Kein Teil der Ausstattung) - Worn - No deduction
9	2nd wheel set	2 alloy rims (Kein Teil der Ausstattung) - Scratch(es) - No deduction

The vehicle shows signs of wear and tear commensurate with its age and use.

## Order/Scope of Order

An order was placed to prepare a sales report for the described vehicle. This report includes the following:

- Description of key vehicle information
- Documentation of equipment features  
(*Delivery by third-party service providers*)
- Documentation of damage, defects, missing parts
- Documentation of prior damage, unrepaired prior damage, repainting
- A brief visual or functional inspection of the equipment details, if possible.  
(*Functional testing of driver assistance systems is not included in the scope of services!*)
- a photographic documentation of the vehicle

## Basis for the order

This product is based on the guidelines for vehicle returns and valuations published by Alphabet Fleet GmbH. The expert makes the specific findings in each individual case objectively, within the framework of the prescribed standards, based on their own expertise.

The vehicle inspection takes place in a fully assembled, unassembled state.

Damage or defects that can only be detected during disassembly/diagnostic work or through further investigation remain within the realm of prognostic risk. An increased risk exists due to concealed defects caused by fraudulent misrepresentation and which were not identifiable by the expert.

Damage or defects resulting from normal use or wear and tear of the vehicle will be accepted in accordance with the applicable standard.

There was no explicit identification or monetary consideration of the expected features within the product.

Features which, in their nature and extent, slightly exceed normal use but do not constitute unacceptable damage, will be documented and indicated as signs of wear, if applicable.

Damage or defects that, according to the applicable standard, can no longer be attributed to normal use or wear and tear are listed under "Value Reducing Factors" in the product description.

Depending on the product specification, a monetary ID can be provided. If this takes place, the costs can be 100% d or pro rata depending on the vehicle's age and mileage.



### Previous damages

No apparent prior damage that had been repaired could be found on the vehicle.

### Comments

Der beiliegende Winterradsatz ist kein Bestandteil des Auslieferungsumfangs.



Figure 1: Diagonal front (left)



Figure 2: Diagonal front (right)



Figure 3: Diagonal rear (left)



Figure 4: Diagonal rear (right)



Figure 5: Interior - front



Figure 6: Interior - rear



Figure 7: Instrument cluster



Figure 8: Instrument panel



Figure 9: Interior 360° view



Figure 10: Cargo area



Figure 11: VIN

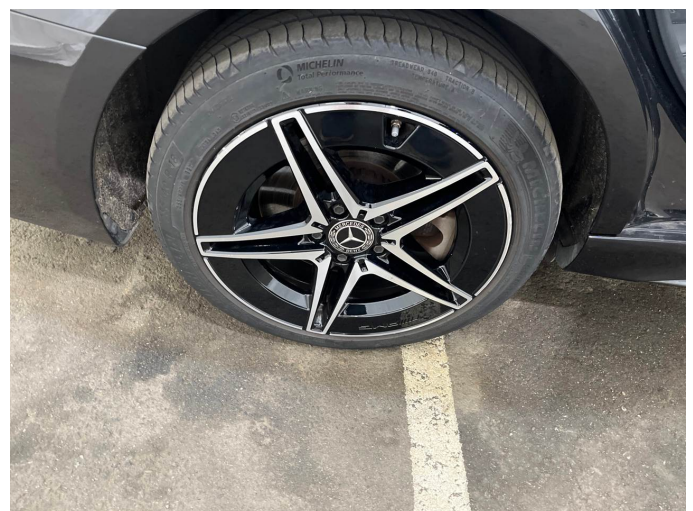


Figure 12: Mounted tyres



Figure 13: Documents

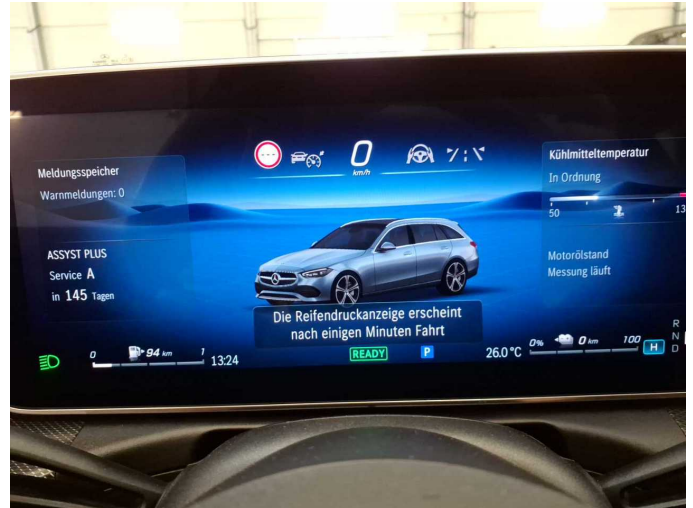


Figure 14: Documents



Figure 15: Additional tyres

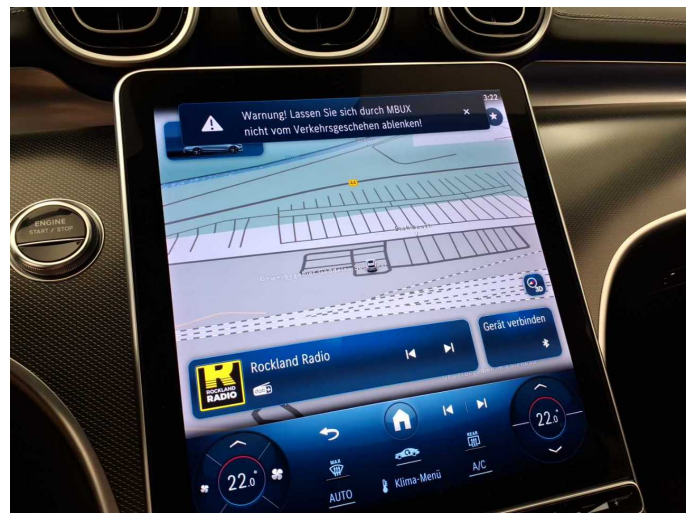


Figure 16: Navigation



Figure 17: Misc.



Figure 18: Misc.



Figure 19: Misc.



Figure 20: Misc.



Figure 21: Misc.



Figure 22: Misc.



Figure 23: Misc.



Figure 24: Misc.



Figure 25: Misc.



Figure 26: Misc.

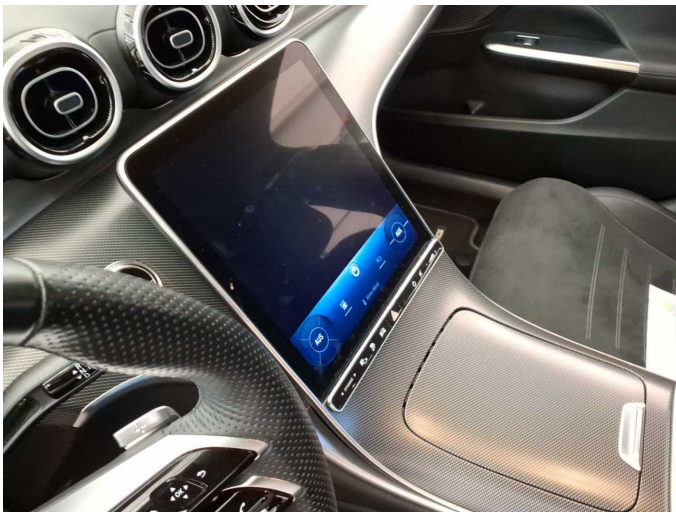


Figure 27: Misc.



Figure 28: Misc.



Figure 29: Misc.

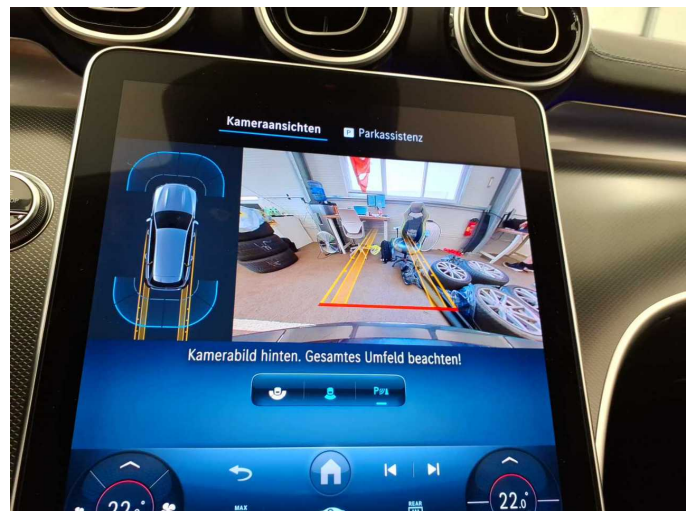


Figure 30: Misc.



**Damage 1:** Side panel - rear right side: Side panel - Scratch(es) - Smart repair



**Damage 1:** Side panel - rear right side: Side panel - Scratch(es) - Smart repair



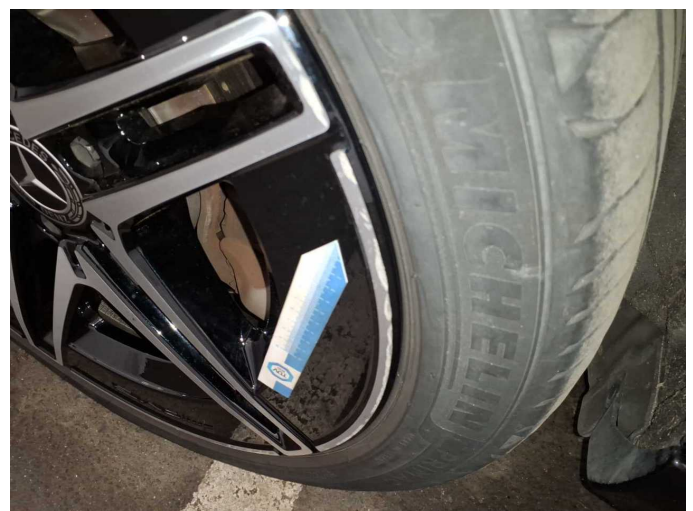
**Damage 2:** Front bumper: Front bumper - Scratch(es) - Smart repair



**Damage 2:** Front bumper: Front bumper - Scratch(es) - Smart repair



**Damage 2:** Front bumper: Front bumper - Scratch(es) - Smart repair



**Damage 3:** Wheel / tyres: Alloy rim - front right side - Scratch(es) - Loss in value



**Damage 3:** Wheel / tyres: Alloy rim - front right side - Scratch(es) - Loss in value



**Wear and tear 1:** Mudguard - left side: Mudguard - left side - Scratch(es) - No deduction



**Wear and tear 1:** Mudguard - left side: Mudguard - left side - Scratch(es) - No deduction



**Wear and tear 7:** Wheel / tyres: Alloy rim - front right side - Scratch(es) - No deduction



**Wear and tear 7:** Wheel / tyres: Alloy rim - front right side - Scratch(es) - No deduction



**Wear and tear 7:** Wheel / tyres: Alloy rim - front right side - Scratch(es) - No deduction



**Wear and tear 8:** 2nd wheel set: 2 tyres (Kein Teil der Ausstattung) - Worn - No deduction



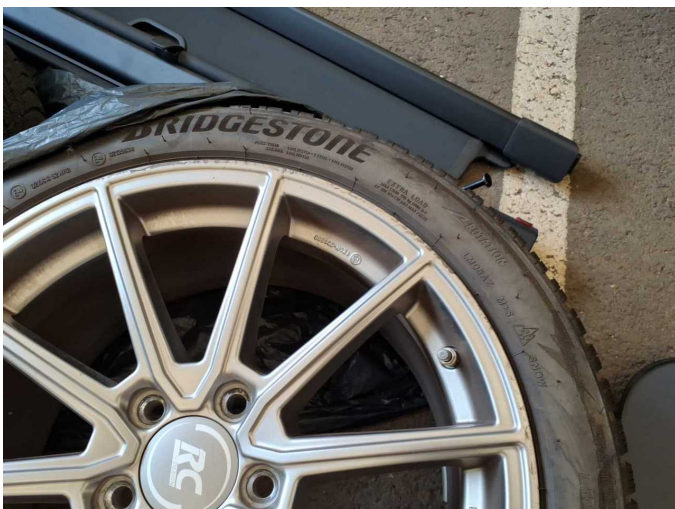
**Wear and tear 8:** 2nd wheel set: 2 tyres (Kein Teil der Ausstattung) - Worn - No deduction



**Wear and tear 8:** 2nd wheel set: 2 tyres (Kein Teil der Ausstattung) - Worn - No deduction



**Wear and tear 8:** 2nd wheel set: 2 tyres (Kein Teil der Ausstattung) - Worn - No deduction



**Wear and tear 9:** 2nd wheel set: 2 alloy rims (Kein Teil der Ausstattung) - Scratch(es) - No deduction



**Wear and tear 9:** 2nd wheel set: 2 alloy rims (Kein Teil der Ausstattung) - Scratch(es) - No deduction



**Wear and tear 9:** 2nd wheel set: 2 alloy rims (Kein Teil der Ausstattung) -  
Scratch(es) - No deduction



**Wear and tear 9:** 2nd wheel set: 2 alloy rims (Kein Teil der Ausstattung) -  
Scratch(es) - No deduction



# Wartungshistorie

(gemäß Auftraggeber Informationen)

Fahrgestellnummer: W1KAH5EB9PF106366  
Hersteller / Modell: MERCEDES-BENZ MERCEDES-BENZ C 300 e T 9G-TRONIC  
AMG Line

Datum	KM-Stand	Beschreibung
15.09.2025	51.041	Regelwartungsdienst
07.05.2024	23.080	Regelwartungsdienst