

## Expertise

Protocol number: 46347064  
Order No. / Reference: 26611014  
Inspection date: 3 Jul 2026

Manufacturer: Audi

Model: A3 35 TDI Sportback S tronic S line

VIN: WAUZZZGY7SA026070



### Vehicle details

#### Manufacturer / Type / Model / Equipment

Audi A3 35 TDI Sportback S tronic S line

**Vehicle Identification number** WAUZZZGY7SA026070

**Mileage (Read)** 43,020 km

**First registration** 26 Aug 2024

**Number of holders** 1

**Power / Engine displacement** 110 kw / 1,968 ccm

**Fuel type / Cylinder** Diesel / 4

**Gearbox / Number of gears** Automatic / 7

**Type of drive** Front drive

**Type of vehicle** Saloon car

**Colour / colour code** Daytonagrau Perleffekt

**Doors / Seats** 5 / 5

**Upholstery type** Cloth

**Colour of upholstery** Grey-Black

**readiness to drive** Roadworthy



Vehicle details			
<b>Maintenance booklet / proof</b>	digital proof / complete	<b>Next maintenance in</b>	1 Monat(e)
<b>Last service on / at</b>	03/2026 at 36,632 km		
<b>Key is / should be</b>	2 / 2	<b>FZG documents</b>	ZB#2 (B) was available (copy), ZB#1 (S) was not available.
		<b>Letter No.</b>	HD585664
<b>Previous damage / Accident</b>	Detectable	<b>Repainting</b>	Detectable
<b>Inspection conditions</b>	sufficient	<b>Lifting equipment / pit</b>	No
<b>Test drive</b>	Not performed	<b>Engine function test</b>	Performed
<b>readiness to drive</b>	Roadworthy		
<b>Manufacturer key number/ type code number</b>	0588 / BZQ 02302		
<b>Emission standard</b>	EURO6;WLTP;EA;PI/CI;M, N1, N2	<b>fine dust sticker</b>	
<b>Permitted total weight</b>	1,960 kg	<b>Empty weight</b>	

## Tyres

Mounted tyres				
#	Tyre size	Type of tyre	Manufacturer	Tread depth
1)	225/45 R17 94W	Summer tyres on Light alloy	Nexen	5mm / 5mm
2)	225/45 R17 94W	Summer tyres on Light alloy	Nexen	5mm / 5mm
Replacement				
Typ	Tyre size	Type of tyre	Manufacturer	Tread depth
	Tirefit	Expiration date 05/2028		

**Legend: Tread depth information for the left tire is listed first, for the right tire it is listed second on the axle in the direction of travel.**

TÜV SÜD Auto Partner GmbH  
Wiesenring 2  
04159 Leipzig

Inspection location  
Hartmann Fleet Professionals GmbH  
Leerenstraße 25  
29683 Bad Fallingbommel



## Equipment



## Standard equipment

- Distraction and fatigue detection (The system warns the driver visually and/or audibly of detected lapses in attention, caused, for example, by distraction or fatigue. At various stages, the system then warns the driver visually in the Audi virtual cockpit via a color-coded pop-up prompting a break, as well as via an audible message.)
- Anti-lock braking system (ABS) (with electronic brake force distribution (EBD))
- Audi connect Emergency Call & Service with Audi connect Remote & Control (Audi connect Emergency Call & Service services: - legal emergency call - Audi connect emergency call - online breakdown call - Audi damage service - online service appointment Audi connect Remote & Control - parking position - vehicle status - push notification anti-theft alarm system - remote control auxiliary heater - remote control locking and unlocking)
- Audi virtual cockpit (fully digital instrument cluster in 10.25" - flexible display of information according to driver needs: speed/RPM, map display, Audi connect services, radio/media information, playback duration of media tracks, album cover display - additional "Sport" display option alongside the "Classic" display - integration of MMI functionalities in the instrument cluster - permanent display of navigation information in the speedometer area during route guidance - including break recommendations)
- Electrically adjustable and heated exterior mirrors (with integrated LED turn signals)
- Headliner in steel grey fabric
- Decorative inlays fine lacquer volcanic grey (accent area for instrument panel)
- Electronic Stability Control (ESC)
- Chassis: Sport chassis (Sport chassis with more dynamic spring and damper tuning and lowering by 15 mm, for more direct road contact and sportier handling.)
- Window channel strips in black (rubber)
- Adjustable speed limiter (allows individual limiting of the maximum speed from 30 km/h, e.g., within built-up areas. When the set limit is reached, the vehicle's speed is smoothly reduced. Operation is via a separate steering column lever. The set maximum speed is displayed in the driver information system. The limit can be overridden at any time by using kick-down.)
- Legal emergency call (complies with the legal requirements of the pan-European emergency call system. The emergency call is triggered either manually or automatically in the event of a serious accident and establishes a voice connection with a local emergency services control center in the respective national language. In addition, vehicle-related data is collected and also sent to the local emergency services control center.)
- Heated rear window
- Rear window, rear door and side windows in clear glass
- Interior mirror dimming
- Airbag for driver and front passenger (full-size airbag, with front passenger airbag deactivation)
- Airbag: Front side airbags with head airbag system and front interaction airbag (The so-called interaction airbag deploys between the front seats, providing protection for the driver and front passenger occupants in the event of a side impact within the system's limits. In a side collision, this largely mitigates the impact between the two front occupants and the front passenger seat when driving alone, thus reducing the risk of injury.)
- Audi pre sense front (within system limits, uses a front radar to detect the area in front of the vehicle and warns the driver with visual and acoustic signals to indicate a potential hazard from vehicles ahead, whether moving or stationary – pedestrian and cyclist detection registers, within system limits, when a pedestrian or cyclist is moving on or crossing the road. The system then warns the driver with an acoustic and visual signal)
- Evasive Steering Assist and Turning Assist (The Evasive Steering Assist can help the driver steer the vehicle around an obstacle in an evasive situation deemed critical. If the driver actively avoids the obstacle after the acute warning, the Evasive Steering Assist supports them by selectively braking the wheels and applying a small steering torque to correct the steering angle.)
- Exterior mirror housings in body color
- third brake light
- Roof edge spoiler S
- Diesel particulate filter (DPF)
- Electromechanical parking brake (includes parking brake function when stationary, starting aid by automatic release when starting off and emergency braking function while driving via all four wheels)
- Electric front windows
- Velour floor mats (front and rear in black)
- Speed limiter
- Cruise control with preparation for adaptive cruise control (maintains the individually set speed between 20 km/h and 12 mph, provided the engine power allows. Operation is via a separate steering column stalk. The set speed is displayed in the digital instrument cluster. The system does not react to vehicles ahead with distance control. The integrated speed limiter helps to maintain a pre-set maximum speed from approximately 30 km/h, e.g., within built-up areas).
- Transmission: S tronic (7-speed)
- Seat belts: Seat belt fastening indicator with rear seat occupancy detection
- Rear lights (rear lights in red - reversing light in white - indicator lights - brake lights - rear fog light in incandescent technology - rear license plate lights in LED technology)
- Rear window wiper (with wiper/washer system)
- Interior with standard seats in black fabric (seat center section in black Intention fabric - seat side bolsters, headrests, front center armrest in solid black fabric)
- Electrically operated child safety lock



- Camera-based traffic sign recognition (camera-based detection and display of overtaking bans and speed limits including temporary speed limits - detection of the beginning and end of motorways, expressways, towns and traffic-calmed areas and display of the corresponding speed limit - situation-dependent display and evaluation in wet conditions, with time-of-day-dependent speed limits, construction sites and when towing a trailer (only with factory-installed trailer hitch)
- Comfort key without Safelock (The vehicle can be unlocked at all doors and the tailgate via wireless communication. The comfort key simply needs to be carried and does not need to be actively used. The vehicle can be locked again using the sensors on the door handles. The engine is started and stopped using the engine start/stop button.)
- Light and rain sensor
- electric auxiliary air heater
- Mild hybrid (Mild hybrid features an enhanced start-stop function, extended energy recuperation during braking to charge the starter battery, and additional lithium-ion storage. This allows the system to recover more energy and switch off the engine more frequently. A supplementary belt-driven starter generator (BSG) is conceptually included for mild hybrid systems. Purely electric driving is not possible.)
- Parking assistant with parking aid plus (helps in finding a suitable parking space along the road. For perpendicular parking spaces, the ideal parking path (forwards and backwards) is calculated; for parallel parking spaces, the ideal entry and exit paths are calculated. The system assists with targeted steering maneuvers during parking and exiting. The driver only needs to follow the instructions on the display, including gear changes, acceleration, braking, and full monitoring of the parking process. Activation is via the parking assistant button in the center console).
- Radio accessories: Preparation for Functions on Demand
- Tire repair kit (with 12-volt compressor and tire sealant, maximum permissible speed 80 km/h)
- Headlights (daytime running lights in LED technology - low beam in LED technology - high beam in LED technology - position lights in LED technology - turn signals in incandescent bulb technology)
- Seats: Rear seat backrest foldable (split, in a 40:60 ratio or fully foldable)
- Start-stop system
- Power outlet: USB ports with charging function in the rear (2 x USB-C ports for charging devices (smartphones, tablets); maximum 15 watts power)
- Telephone: Audi Phone Box light (The Audi phone box light includes:
  - universal Bluetooth interface - convenient, integrated hands-free system - telephone storage in the area of the front center armrest with dimensions of 170 x 87 mm - charging option via USB-A port or wireless charging (Qi standard) - forget-to-use warning - charging status indicator in the MMI touch display)
- Glazing: Heat-insulating glass for windshield (green tinted for rear window, door and side windows; heated rear window; with timer)
- i-Size child seat attachment and top tether for the outer rear seats
- Single-zone automatic climate control with preparation for additional climate functions (electronic control of air temperature, quantity and distribution - temperature setting for the entire interior - preparation for activating the second temperature zone at the front via Functions on Demand)
- Rear headrests (3)
- Steering wheel: Leather steering wheel in a 3-spoke design with multifunction plus and shift paddles (The steering wheel's height and reach are manually adjustable. For convenient operation of the extensive standard and optional infotainment features, the steering wheel is equipped with twelve multifunction buttons. Shift paddles allow manual gear changes.)
- Front center armrest (adjustable in tilt, movable in length)
- Multifunctional camera
- Non-smoking version (with 12-volt socket and storage compartment)
- Package: Ambient lighting package (front and rear roof module, including reading lights (LED) - illuminated vanity mirrors (LED) - glove compartment lighting (incandescent bulb) - front and rear footwell lighting (LED) - luggage compartment lighting (LED))
- Wheel: On-board tools (excluding jack)
- Wheel: Tire pressure monitoring system
- Radio: MMI Radio plus (10.1-inch color display (1,540 x 720) including MMI touch operation, digital instrument cluster with 10.25-inch color display, Audi music interface with two USB-C ports, each with data and charging function, Bluetooth interface (hands-free calling and audio streaming), passive speakers with 4 speakers in the front and 2 in the rear (80 watts), AM/FM phase diversity, DAB+ speed-dependent volume adjustment, voice control system for controlling infotainment and vehicle functions, WLAN hardware)
- Electromechanical power steering
- Front seats (standard seats) (with manual longitudinal and backrest tilt adjustment, adjustment of seat height, headrest and belt height)
- Lane Departure Warning including Emergency Assist (The Lane Departure Warning helps to prevent unintentional lane departures within the system's limits. The Emergency Assist can bring the vehicle to a standstill within the system's limits. The system assists the Lane Departure Warning with corrective steering interventions. If the driver is inactive, the Emergency Assist provides visual, audible, and haptic warnings; if there is no reaction, it automatically brings the vehicle to a standstill within its lane.)
- Telephone: Preparation for smartphone interface (Preparation for subsequent booking of the smartphone interface via Functions on Demand.)
- First aid kit with warning triangle (warning triangle - first aid kit - 2 high-visibility vests)
- Four lashing eyes in the luggage compartment (for securing luggage and items)



- Electronic immobilizer

### Extra equipment

- Anti-slip mat
- Paint finish: Pearl effect
- Dynamic package (35) (Sport suspension - red painted brake calipers - Audi drive select - progressive steering - sound actuator for an enhanced engine sound experience in the vehicle interior)
- Package: Driving and Parking Assistance Package Plus (adaptive speed assistant with predictive control - lane departure warning - parking assistant with parking aid plus - reversing camera)
- Package: Interior with sport seats, black fabric (front sport seats with visually integrated headrests, manual seat height, fore/aft position, backrest and seat tilt and belt height - center section of the front and both outer rear seats in black/silver fabric, side bolsters and headrests front/rear in solid black fabric - rear seat backrest foldable, 40:60 or fully, including 4 lashing eyes in the luggage compartment - interior trim in aluminum look on control buttons, door sills, etc. - door sills with aluminum inlays at the front - headliner in steel gray fabric)
- Wheel: Alloy wheels - 17 inch - 5-parallel spokes (8.0 J x 17, tires 225/45 R 17)
- Glazing: Sun protection glazing, tinted (rear window, rear door and side windows tinted)
- Luggage net
- Steering wheel: Sport contour leather steering wheel in 3-S.-D, flattened at the bottom, with multifunction plus and shift paddles. (The steering wheel's height and reach are manually adjustable. For convenient operation of the extensive standard and optional infotainment features, the steering wheel is equipped with twelve multifunction buttons. Shift paddles allow manual gear changes.)
- Package: Infotainment package Connectivity (MMI Navigation plus with MMI touch - Audi virtual cockpit plus 12.3" Full HD with individual display options Classic, Dynamic and Sport - Audi connect Navigation and Infotainment plus - Information on available parking spaces, the latest news and the current weather forecast, Wi-Fi hotspot - Audi Application Store and smartphone interface - Access to a wide selection of popular apps - News and podcasts, sports, etc. - Audi sound system - 10 speakers, center and subwoofer)
- Panoramic glass roof (The glass element can be opened and closed electrically. The sunshades are operated just as conveniently. From the outside, the panoramic glass roof can also be operated using the remote key via comfort opening and closing. When open, the panoramic glass roof improves the interior climate through efficient ventilation. An integrated wind deflector reduces wind noise.)

### Brief expert findings

Documents submitted	At the time of the inspection, the vehicle registration certificate Part 2 (title) was available, but the vehicle registration certificate Part 1 (document) was not. (Copy)
VIN comparison	The vehicle identification number (VIN) was read from the vehicle and its conformity with the submitted documents was confirmed by the undersigned during the inspection.
Inspection	The inspection conditions were sufficient for the assessment of the vehicle. No lifting equipment or pit was available for inspecting the vehicle. Therefore, inspection of the vehicle's underside was only possible to a limited extent.
Test drive	No test drive/shunting maneuver was carried out during the inspection of the vehicle.
Engine function test	An engine test run was performed.
readiness to drive	The vehicle was roadworthy at the time of inspection.

### Value reducing factors

No.	Component group	Description
1	Wing mirror - left side	Cap - Scratch(es) - Smart repair
2	Front bumper	Front bumper - dent(s) - Loss in value
3	Roof	Roof rail - right side - Scratch(es) - Smart repair
4	Boot lid / rear door	Boot lid - dent(s) - Smart repair
5	Side panel - rear right side	Side panel - Dent / paintcoat damage - Smart repair
6	Rear bumper	Spoiler - Scratch(es) - Replace



## Wear and tear

No.	Component group	Description
1	Vehicle glazing	Windscreen - Stone chips - No deduction
2	Wing mirror - right side	Cap - Scratch(es) - No deduction
3	Side panel - rear right side	Sill - dent(s) - No deduction
4	Door - front left side	Door edge - Scratch(es) - No deduction

The vehicle shows signs of wear and tear commensurate with its age and use.

## Missing parts

### Description

Interior - Luggage net

## Previous damages

No.	Previous damage	Extent of damage (Net)
1	Side - left, Provided by user / customer, from 21 Jul 2025	3.522,20 €

## Repainting

### No. Repainting

1 Door - rear left side, Professionally carried out, Invoice of repair done Non-existent

## Paint coat thickness measurement

Door - rear left side 184 µm |

## Order/Scope of Order

An order was placed to prepare a sales report for the described vehicle. This report includes the following:

- Description of key vehicle information
- Documentation of equipment features  
*(Delivery by third-party service providers)*
- Documentation of damage, defects, missing parts
- Documentation of prior damage, unrepaired prior damage, repainting
- A brief visual or functional inspection of the equipment details, if possible.  
*(Functional testing of driver assistance systems is not included in the scope of services!)*
- a photographic documentation of the vehicle



## Basis for the order

This product is based on the guidelines for vehicle returns and valuations published by Alphabet Fleet GmbH. The expert makes the specific findings in each individual case objectively, within the framework of the prescribed standards, based on their own expertise.

The vehicle inspection takes place in a fully assembled, unassembled state.

Damage or defects that can only be detected during disassembly/diagnostic work or through further investigation remain within the realm of prognostic risk. An increased risk exists due to concealed defects caused by fraudulent misrepresentation and which were not identifiable by the expert.

Damage or defects resulting from normal use or wear and tear of the vehicle will be accepted in accordance with the applicable standard.

There was no explicit identification or monetary consideration of the expected features within the product.

Features which, in their nature and extent, slightly exceed normal use but do not constitute unacceptable damage, will be documented and indicated as signs of wear, if applicable.

Damage or defects that, according to the applicable standard, can no longer be attributed to normal use or wear and tear are listed under "Value Reducing Factors" in the product description.

Depending on the product specification, a monetary ID can be provided. If this takes place, the costs can be 100% d or pro rata depending on the vehicle's age and mileage.

## Previous damages

According to available information previous damages were repaired at the vehicle. Traces of repairs, which allow conclusions about the area of repair, were not recognizable during the inspection.



Figure 1: Diagonal front (left)



Figure 2: Diagonal front (right)



Figure 3: Diagonal rear (left)



Figure 4: Diagonal rear (right)



Figure 5: Interior - front



Figure 6: Interior - rear



Figure 7: Instrument cluster



Figure 8: Instrument panel



Figure 9: Interior 360° view



Figure 10: Cargo area



Figure 11: VIN



Figure 12: Mounted tyres



Figure 13: Documents



Figure 14: Navigation



Figure 15: Misc.

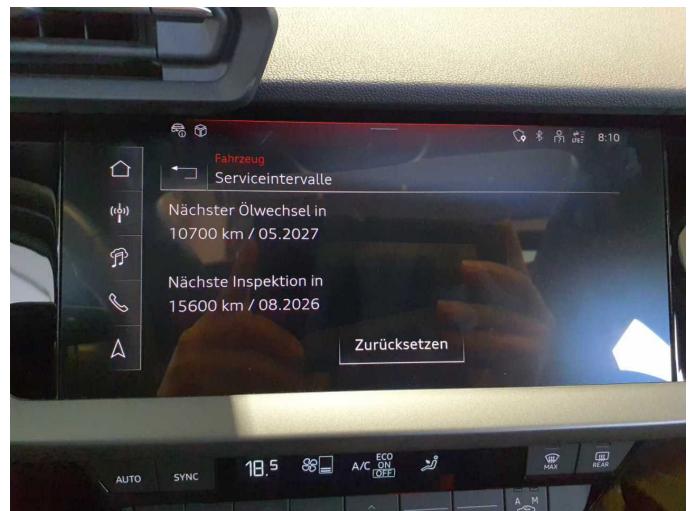


Figure 16: Misc.



Figure 17: Misc.



Figure 18: Misc.



Figure 19: Misc.



Figure 20: Misc.



Figure 21: Misc.

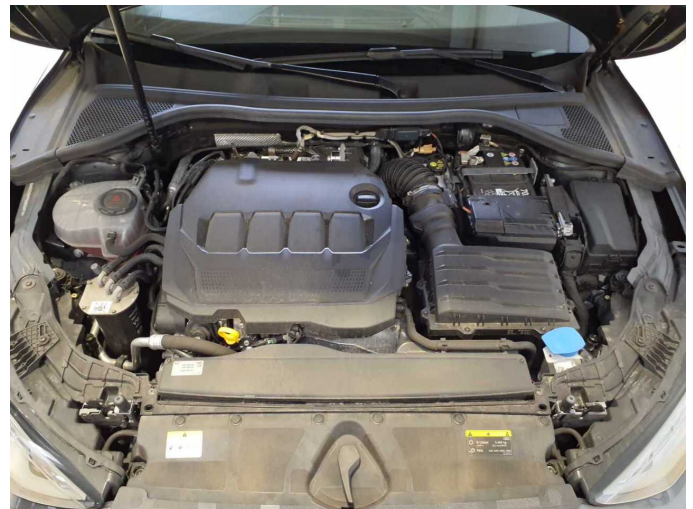


Figure 22: Misc.



Figure 23: Misc.



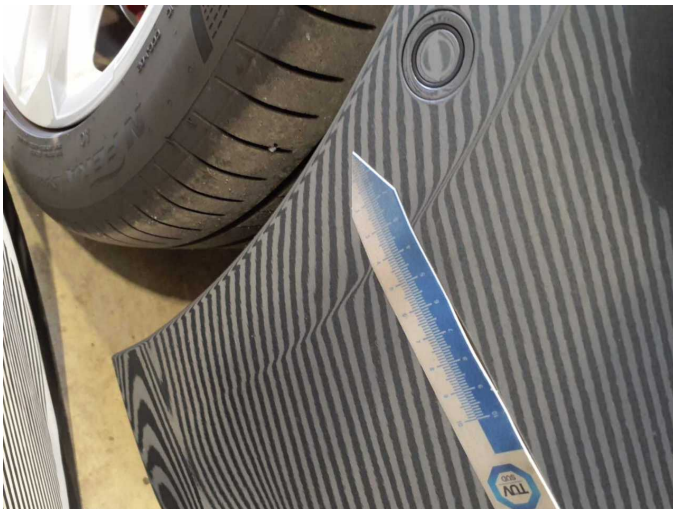
Damage 1: Wing mirror - left side: Cap - Scratch(es) - Smart repair



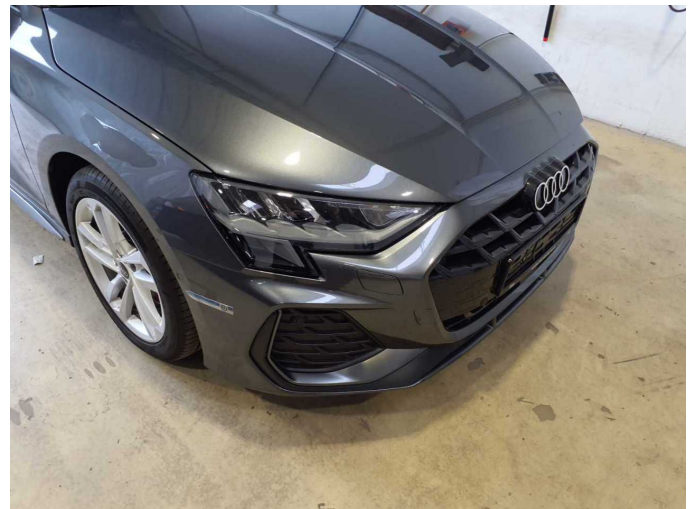
**Damage 1:** Wing mirror - left side: Cap - Scratch(es) - Smart repair



**Damage 2:** Front bumper: Front bumper - dent(s) - Loss in value



**Damage 2:** Front bumper: Front bumper - dent(s) - Loss in value



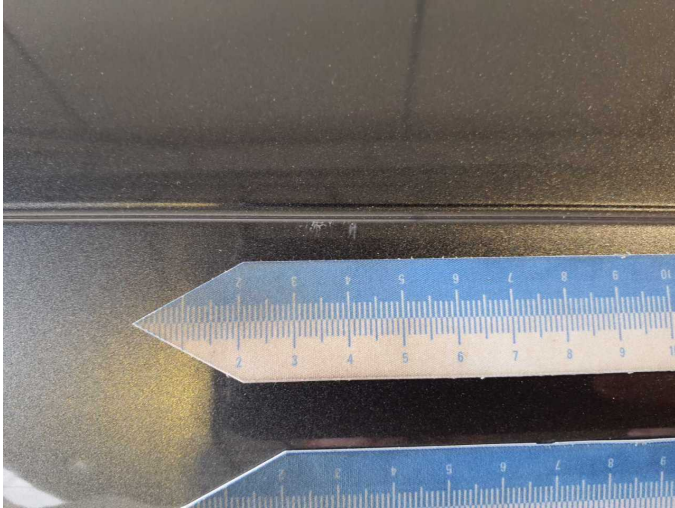
**Damage 2:** Front bumper: Front bumper - dent(s) - Loss in value



**Damage 3:** Roof: Roof rail - right side - Scratch(es) - Smart repair



**Damage 3:** Roof: Roof rail - right side - Scratch(es) - Smart repair



**Damage 3:** Roof: Roof rail - right side - Scratch(es) - Smart repair



**Damage 4:** Boot lid / rear door: Boot lid - dent(s) - Smart repair



**Damage 4:** Boot lid / rear door: Boot lid - dent(s) - Smart repair



**Damage 4:** Boot lid / rear door: Boot lid - dent(s) - Smart repair



**Damage 4:** Boot lid / rear door: Boot lid - dent(s) - Smart repair



**Damage 4:** Boot lid / rear door: Boot lid - dent(s) - Smart repair



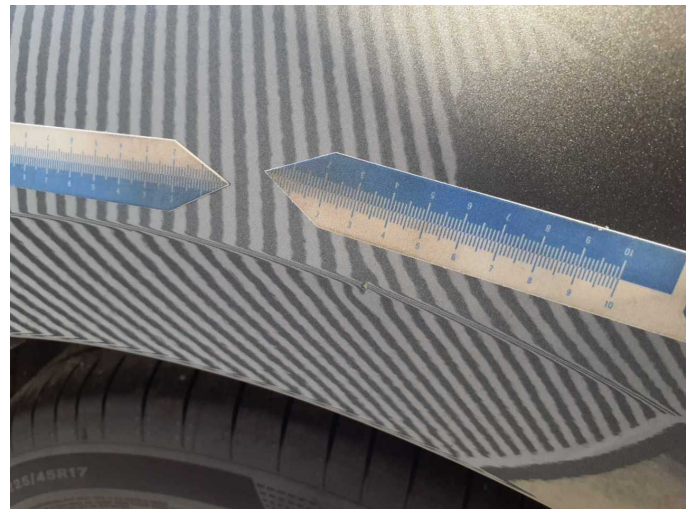
**Damage 4:** Boot lid / rear door: Boot lid - dent(s) - Smart repair



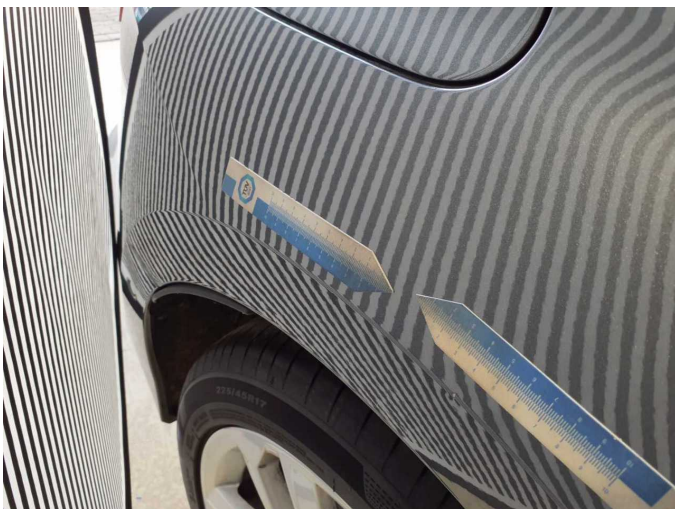
**Damage 5:** Side panel - rear right side: Side panel - Dent / paintcoat damage - Smart repair



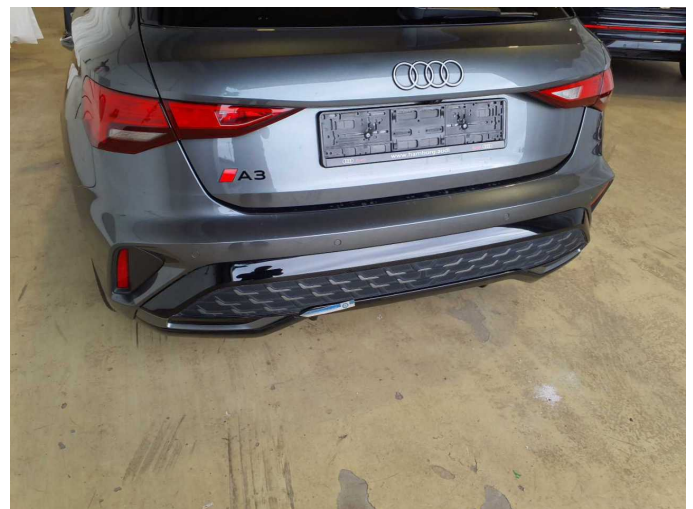
**Damage 5:** Side panel - rear right side: Side panel - Dent / paintcoat damage - Smart repair



**Damage 5:** Side panel - rear right side: Side panel - Dent / paintcoat damage - Smart repair



**Damage 5:** Side panel - rear right side: Side panel - Dent / paintcoat damage - Smart repair



**Damage 6:** Rear bumper: Spoiler - Scratch(es) - Replace



**Damage 6:** Rear bumper: Spoiler - Scratch(es) - Replace



**Damage 6:** Rear bumper: Spoiler - Scratch(es) - Replace



**Repainting 1:** Door - rear left side



**Repainting 1:** Door - rear left side