

## Expertise

Protocol number: 45790461  
Order No. / Reference: 26412629  
Inspection date: 29 May 2026

Manufacturer: Opel

Model: Mokka-e Elegance

VIN: VXXKUKZKXZNW087141



### Vehicle details

#### Manufacturer / Type / Model / Equipment

Opel Mokka-e Elegance

**Vehicle Identification number** VXXKUKZKXZNW087141

**Mileage (Read)** 13,861 km

**First registration** 15 Dec 2022

**Number of holders** 1

**Power / Engine displacement** 57 kw / 0 ccm

**Fuel type / Cylinder** Electric / 0

**Gearbox / Number of gears** Direct drive / 1

**Type of drive** Front drive

**Type of vehicle** SUV

**Colour / colour code** Jade Weiß

**Doors / Seats** 5 / 5

**Upholstery type** Cloth / leather combination

**Colour of upholstery** Black-Grey



## Vehicle details

<b>Maintenance booklet / proof</b>	Available / complete	<b>Next maintenance in</b>	8 Monat(e)
<b>Last service on / at</b>	01/2025 at 9,472 km		
<b>Key is / should be</b>	2 / 2	<b>FZG documents</b>	ZB#2 (B) was available (copy), ZB#1 (S) was not available.
		<b>Letter No.</b>	GN197719
<b>Previous damage / Accident</b>	Detectable	<b>Repainting</b>	Detectable
<b>Inspection conditions</b>	sufficient	<b>Lifting equipment / pit</b>	yes
<b>Test drive</b>	Not performed	<b>Engine function test</b>	Performed
<b>Manufacturer key number/ type code number</b>	1889 / ADD 00021		
<b>Emission standard</b>	2017/1151;WLTP;reine Elektrofz	<b>fine dust sticker</b>	
<b>Permitted total weight</b>	2,015 kg	<b>Empty weight</b>	

## Tyres

### Mounted tyres

#	Tyre size	Type of tyre	Manufacturer	Tread depth
1)	215/60 R17 96H	Summer tyres on Light alloy	Continental	4mm / 4mm
2)	215/60 R17 96H	Summer tyres on Light alloy	Continental	5mm / 5mm

### Replacement

Typ	Tyre size	Type of tyre	Manufacturer	Tread depth
	Tirefit	Expiration date 01/2028		

**Legend: Tread depth information for the left tire is listed first, for the right tire it is listed second on the axle in the direction of travel.**



## Equipment

### Standard equipment

- 2 ignition keys, with remote control
- Storage compartments
- Driver and passenger side airbags
- Airbag: Head airbags, front and rear outer
- Active Pedestrian Warning System (AVAS)
- Exterior mirrors in black
- Exterior mirrors, electrically adjustable and heated, manually foldable
- Hill Start Assist
- Roof design line in chrome
- Roof spoiler, black
- Third brake light
- Electronic Stability Program Plus (ESP Plus)
- Chassis: Driving modes
- Front collision warning with automatic city emergency braking and pedestrian detection
- Transmission: Automatic electric drive with fixed gear ratio
- rear window wiper
- Child safety lock in the rear doors, manual
- Front headrests and 3 rear headrests, height adjustable
- LED headlights
- Steering column, height and tilt adjustable
- Reading lights, front
- Center armrest, front
- myOpel App
- Onboard charger (vehicle-integrated charging unit), 3-phase (11 kW)
- Upholstery: Fabric/Premium leather look
- Wheels: Light alloy (4) 5 double spokes 6.5 J x 17 in BiColor Black
- "Mokka" lettering on the rear in chrome
- Speed-sensitive power steering
- Visibility equipment
- Seats: Driver's seat 6-way manually adjustable
- Seats: Rear seat backrest foldable in a 60:40 ratio
- Lane Keeping Assist
- Start/Stop System
- Traction control with engine and brake intervention TC Plus
- Underride protection look, front and rear, in silver
- Immobiliser
- Tinted heat-insulating glazing
- Storage: Pockets on the back of the front seats
- Adaptive brake light
- Airbag: Front and side airbags
- Actively controlled air intakes (Active Aero Shutter)
- Anti-lock braking system (ABS) with cornering brake control and brake assist
- Battery charging kit: Mode 2 charging cable (1.8 kW) for household socket and battery charging status indicator
- Braking system: Regenerative
- Headliner, Grey
- Decorative strips, silver
- Electronic brake force distribution (EBD)
- "Mokka-e" emblem on tailgate
- Electric windows front and rear
- Pedestrian protection
- Cruise control with intelligent speed limiter
- Heated rear window
- Rear shelf
- automatic climate control
- Charging options
- Steering wheel: Leather steering wheel, flattened at the bottom
- Makeup mirror in sun visor, driver and front passenger
- Multi-collision brake
- Fatigue detection
- Parkpilot, rear parking aid, with acoustic warning signal when reversing.
- Tire pressure warning
- Wheels: Tire repair kit
- Keyless Start system
- Side impact protection
- Seat belts
- Seats: Passenger seat 6-way manually adjustable
- Seats: Comfort seats, front
- Seats: Pre-installation for ISOFIX child seat mounting system, front passenger seat and rear outer seats
- 12-volt power outlet
- Ambient lighting
- Traffic sign recognition
- heat pump
- Central locking with remote control



### Extra equipment

- Active Drive Assist Plus (Automatic Speed Assist with Stop & Go function - Front Collision Warning with automatic emergency braking as well as pedestrian and cyclist detection - Active Lane Keeping Assist)
- Floor mats, velour, 4-piece set BDN
- Heated leather steering wheel with UV protection
- Paint finish: Solid
- Park & Go (Park Pilot, front and rear parking aid with audiovisual warning - 180-degree panoramic reversing camera - blind spot warning and side protection - electrically folding exterior mirrors - ambient lighting - LED fog lights)
- Seats: Heated seats, driver and front passenger KA1
- Double loading floor including mounting bracket for loading floor
- Mode 3 charging cable (11 kW, 3-phase) for public charging, 6 meters long
- Radio: Multimedia Navi (Mokka-e) (with 7" color touchscreen display and fully digital 7" driver information display - navigation system with integrated memory - road map of Europe (including Russia and Turkey) - 3D map display - dynamic route guidance via map and/or arrow display - display of points of interest - trip planning - GPS module - display of charging stations. OpelConnect, including LIVE navigation services: - map updates (via USB) - voice control for audio, telephone and navigation - radio, Bluetooth, DAB+, USB, hands-free calling.)

### Brief expert findings

Documents submitted	At the time of the inspection, the vehicle registration certificate Part 2 (title) was available, but the vehicle registration certificate Part 1 (document) was not. (Copy)
VIN comparison	The vehicle identification number (VIN) was read from the vehicle and its conformity with the submitted documents was confirmed by the undersigned during the inspection.
Inspection	The inspection conditions were sufficient for the assessment of the vehicle. Lifting equipment and/or a pit were available for examining the vehicle.
Test drive	No test drive/shunting maneuver was carried out during the inspection of the vehicle.
Engine function test	An engine test run was performed.

### Value reducing factors

No.	Component group	Description
1	Door - rear left side	Door - dent(s) - Smooth repair work
2	Door - rear right side	Door - dent(s) - Smooth repair work
3	Rear bumper	Rear bumper - Scratch(es) - Smart repair
4	Trim / covers	Carpet - front left side - Burn hole (cigarettes) - Smart repair

### Wear and tear

No.	Component group	Description
1	Vehicle glazing	Windscreen - Stone chips - No deduction

The vehicle shows signs of wear and tear commensurate with its age and use.

### Previous damages

No.	Previous damage	Extent of damage (Net)
1	Front, Provided by user / customer, from 10 Jul 2025	1.898,35 €

### Repainting

No.	Repainting
1	Side panel - rear left side, Professionally carried out, Invoice of repair done Non-existent

### Paint coat thickness measurement

Side panel - rear left side	155 µm
-----------------------------	--------



## Order/Scope of Order

An order was placed to prepare a sales report for the described vehicle. This report includes the following:

- Description of key vehicle information
- Documentation of equipment features  
*(Delivery by third-party service providers)*
- Documentation of damage, defects, missing parts
- Documentation of prior damage, unrepaired prior damage, repainting
- A brief visual or functional inspection of the equipment details, if possible.  
*(Functional testing of driver assistance systems is not included in the scope of services!)*
- a photographic documentation of the vehicle

## Basis for the order

This product is based on the guidelines for vehicle returns and valuations published by Alphabet Fleet GmbH. The expert makes the specific findings in each individual case objectively, within the framework of the prescribed standards, based on their own expertise.

The vehicle inspection takes place in a fully assembled, unassembled state.

Damage or defects that can only be detected during disassembly/diagnostic work or through further investigation remain within the realm of prognostic risk. An increased risk exists due to concealed defects caused by fraudulent misrepresentation and which were not identifiable by the expert.

Damage or defects resulting from normal use or wear and tear of the vehicle will be accepted in accordance with the applicable standard.

There was no explicit identification or monetary consideration of the expected features within the product.

Features which, in their nature and extent, slightly exceed normal use but do not constitute unacceptable damage, will be documented and indicated as signs of wear, if applicable.

Damage or defects that, according to the applicable standard, can no longer be attributed to normal use or wear and tear are listed under "Value Reducing Factors" in the product description.

Depending on the product specification, a monetary ID can be provided. If this takes place, the costs can be 100% d or pro rata depending on the vehicle's age and mileage.

## Previous damages

According to available information previous damages were repaired at the vehicle. Traces of repairs, which allow conclusions about the area of repair, were not recognizable during the inspection.



Figure 1: Diagonal front (left)



Figure 2: Diagonal front (right)



Figure 3: Diagonal rear (left)



Figure 4: Diagonal rear (right)



Figure 5: Interior - front



Figure 6: Interior - rear



Figure 7: Instrument cluster



Figure 8: Instrument panel



Figure 9: Interior 360° view



Figure 10: Cargo area

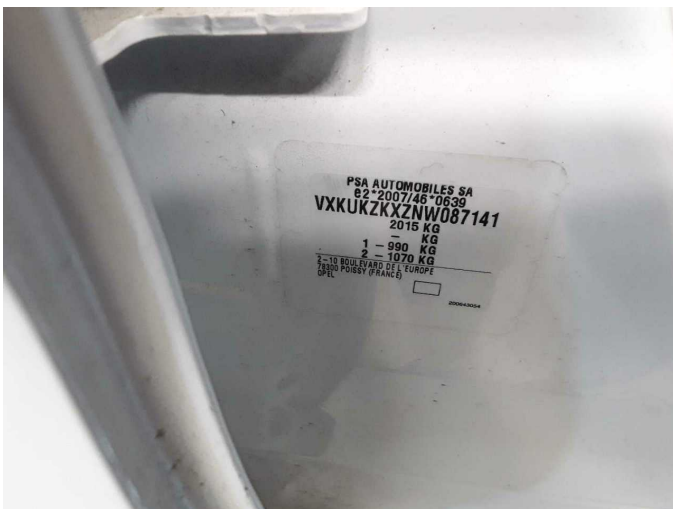


Figure 11: VIN

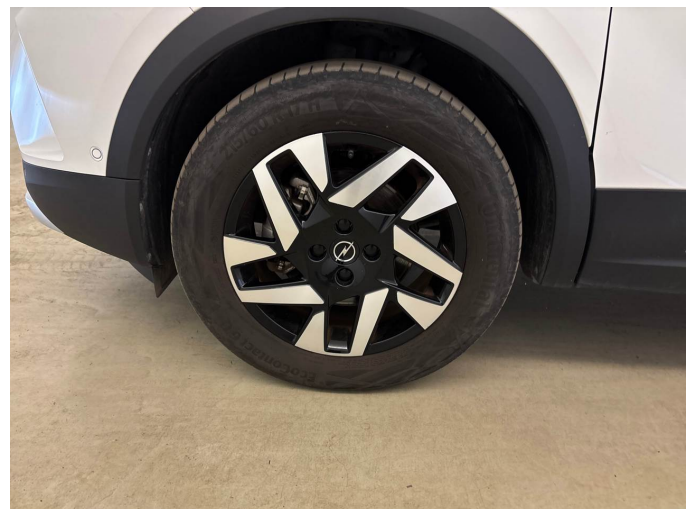


Figure 12: Mounted tyres



Figure 13: Documents

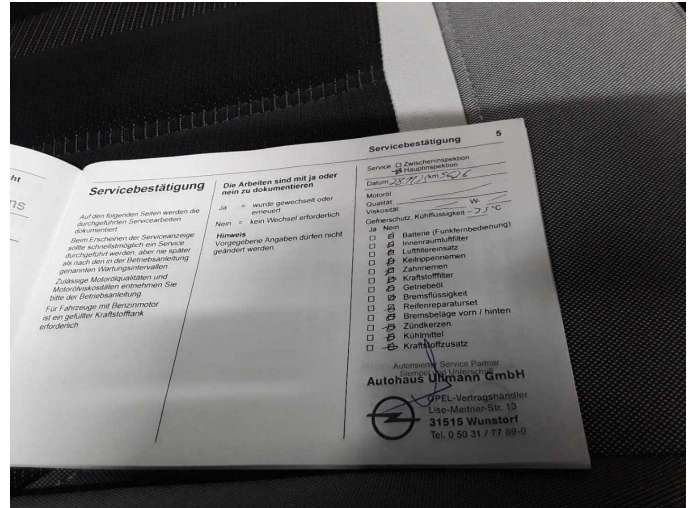


Figure 14: Documents

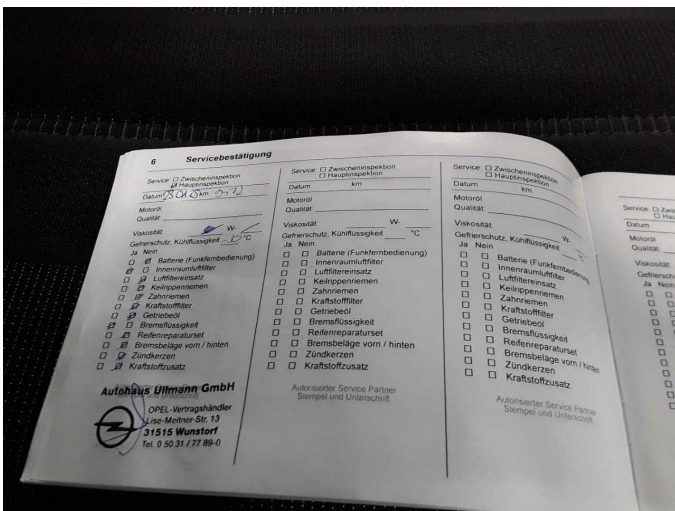


Figure 15: Documents



Figure 16: Navigation



Figure 17: Misc.



Figure 18: Misc.



Figure 19: Misc.



Figure 20: Misc.

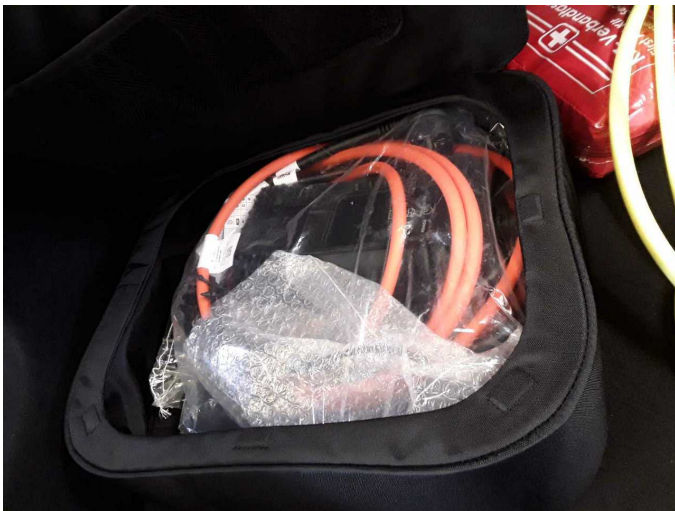


Figure 21: Misc.



Figure 22: Misc.



Figure 23: Misc.

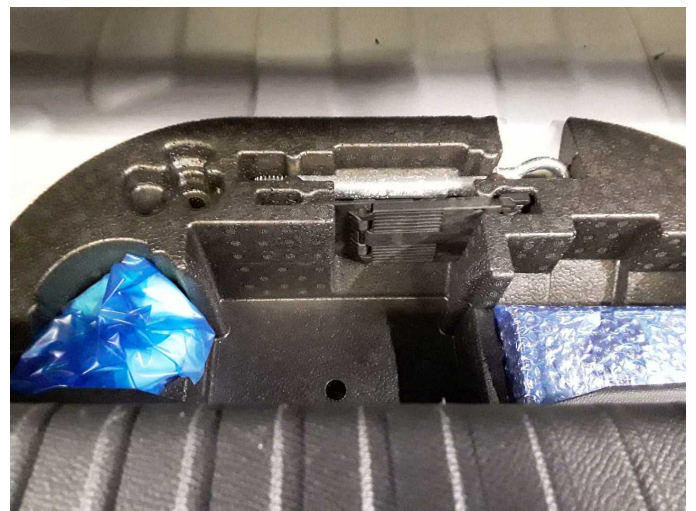


Figure 24: Misc.



Figure 25: Misc.



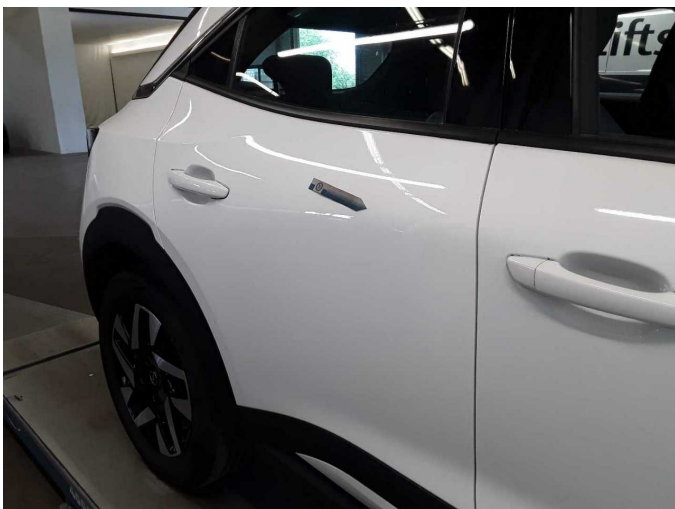
Figure 26: Misc.



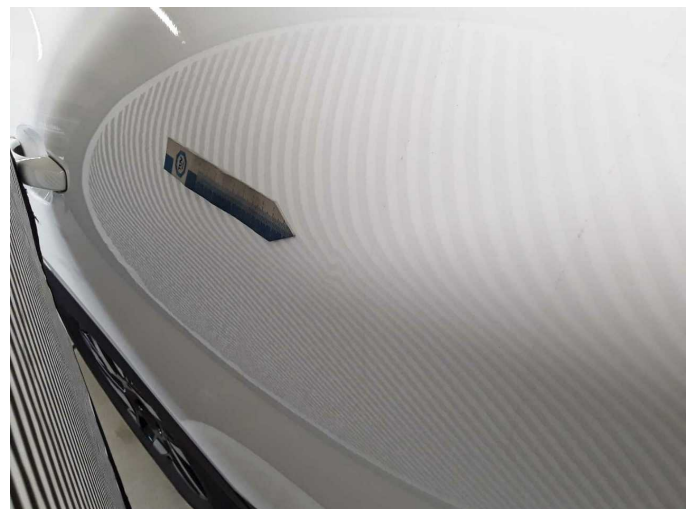
Damage 1: Door - rear left side: Door - dent(s) - Smooth repair work



Damage 1: Door - rear left side: Door - dent(s) - Smooth repair work



Damage 2: Door - rear right side: Door - dent(s) - Smooth repair work



Damage 2: Door - rear right side: Door - dent(s) - Smooth repair work



**Damage 2:** Door - rear right side: Door - dent(s) - Smooth repair work



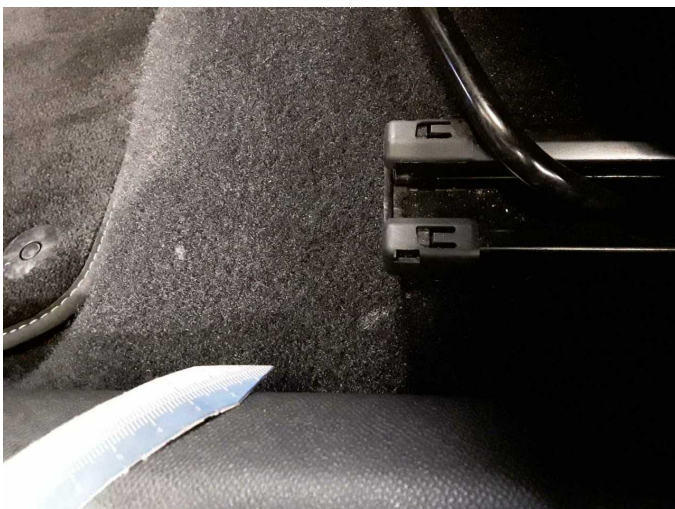
**Damage 3:** Rear bumper: Rear bumper - Scratch(es) - Smart repair



**Damage 3:** Rear bumper: Rear bumper - Scratch(es) - Smart repair



**Damage 4:** Trim / covers: Carpet - front left side - Burn hole (cigarettes) - Smart repair



**Damage 4:** Trim / covers: Carpet - front left side - Burn hole (cigarettes) - Smart repair



**Wear and tear 1:** Vehicle glazing: Windscreen - Stone chips - No deduction



**Wear and tear 1:** Vehicle glazing: Windscreen - Stone chips - No deduction



**Repainting 1:** Side panel - rear left side



**Repainting 1:** Side panel - rear left side