

Expertise

Protocol number: 46137900
Order No. / Reference: 26438096
Inspection date: 24 Jun 2026

Manufacturer: Citroën

Model: e-Spacetourer XL (75 kWh) Feel

VIN: VF7VZZKXZPZ079251



Vehicle details

Manufacturer / Type / Model / Equipment

Citroën e-Spacetourer XL (75 kWh) Feel

Vehicle Identification number VF7VZZKXZPZ079251

Mileage (Read) 116,925 km

First registration 8 May 2024

Number of holders 1

Power / Engine displacement 57 kw / 0 ccm

Fuel type / Cylinder Electric / 0

Gearbox / Number of gears Direct drive / 1

Type of drive Front drive

Type of vehicle Van

Colour / colour code Eis-Weiß

Doors / Seats 5 / 7

Upholstery type Cloth

Colour of upholstery Black-Anthracite



Vehicle details

Maintenance booklet / proof	Non-existent	Next maintenance in	0 km
Key is / should be	1 / 2	FZG documents	ZB#2 (B) was available (copy), ZB#1 (S) was not available.
		Letter No.	HB974880
Previous damage / Accident	Detectable	Repainting	None detectable
Inspection conditions	sufficient	Lifting equipment / pit	yes
Test drive	Not performed	Engine function test	Performed
Manufacturer key number/ type code number	3001 / BBW 00274		
Emission standard	2017/1151;WLTP;reine Elektrofz	fine dust sticker	
Permitted total weight	3,100 kg	Empty weight	

Tyres

Mounted tyres

#	Tyre size	Type of tyre	Manufacturer	Tread depth
1)	225/55 R17 101V	All-season tyres on Steel rim with wheel cover	Continental	5mm / 5mm
2)	225/55 R17 101V	All-season tyres on Steel rim with wheel cover	Continental	5mm / 5mm

Replacement

Typ	Tyre size	Type of tyre	Manufacturer	Tread depth
Tirefit		Expiration date 07/2028		

Legend: Tread depth information for the left tire is listed first, for the right tire it is listed second on the axle in the direction of travel.



Equipment

Standard equipment

- ABS and ESC
- Airbag: Side and head airbags in row 1
- Exterior mirrors, electrically adjustable, heated and foldable
- On-board computer
- CITROËN Connect Box: Emergency call and assistance system
- Windows: Side windows in rows 2 and 3, as well as the rear window, are more heavily tinted.
- Cruise control system with speed limiter
- Glazed tailgate, heated and with windshield wiper
- Charging unit: Onboard charger (vehicle-integrated charging unit), 3-phase (11 kW)
- LED daytime running lights
- Reading lamps (individually) in rows 2 and 3
- Engine guard (metal underride guard)
- Radio: RCC DAB audio system
- Tire pressure monitoring system
- Wheels: 17-inch steel rims with "Pentagon" wheel trims
- Power steering
- Sunshades with lighting
- Doors: Sliding door on the left, manual
- Immobiliser
- Driver and passenger side airbags
- Airbag: Curtain airbags in rows 2 and 3
- Exterior mirror caps painted in Perla Nera black
- Hill start assist
- third brake light
- Color glass
- Rear parking aid, acoustic
- Electric front windows
- electric parking brake
- Transmission: 1-speed direct drive
- Paint finish: Solid color paint
- Charging cable: Mode 3 charging cable (11 kW, 3-phase), 6 meters long
- Steering wheel with height and reach adjustment
- light sensor
- Fog light
- Rain sensor
- Tire repair kit with puncture spray
- Side skirts painted in car color
- Seats: 9-seater upholstered in "Curitiba triton" fabric
- Front and rear bumpers painted in body color
- Doors: Sliding door on the right, manual
- Central locking with remote control

Extra equipment

- All-season tyres
- Conversion for people with disabilities
- Package: Connect (CITROËN Connect NAV DAB incl. 17-cm / 7" touchscreen; Bluetooth; USB; Tri-Tuner; Mirror Screen; voice control - multifunction leather steering wheel - rear parking aid with reversing camera)
- Package: Safety (Active Emergency Brake with Collision Warning - Automatic Emergency Braking - Blind Spot Assist - Front Parking Aid with Acoustic Signals - Multifunction Steering Wheel - Lane Keeping Assist - Traffic Sign Recognition - Attention Assist - High Beam Assist)
- Package: Climate control (additional rear air conditioning - automatic climate control (2 zones) including heated rear window - 12V socket in row 2)
- Package: Comfort (Electric sliding doors right and left with opening sensor - Keyless system - Multifunction steering wheel - 12V socket in row 2)
- Seat: Heated front seats
- Seats: 6-seater in "Curitiba triton" fabric (Row 1: Driver's seat with armrest, height adjustable and double passenger seat with storage compartments; Row 2: Split bench seat (60/40), foldable and removable; Row 3: No seats)

Brief expert findings

Documents submitted	At the time of the inspection, the vehicle registration certificate Part 2 (title) was available, but the vehicle registration certificate Part 1 (document) was not. (Copy)
VIN comparison	The vehicle identification number (VIN) was read from the vehicle and its conformity with the submitted documents was confirmed by the undersigned during the inspection.
Inspection	The inspection conditions were sufficient for the assessment of the vehicle. Lifting equipment and/or a pit were available for examining the vehicle.
Test drive	No test drive/shunting maneuver was carried out during the inspection of the vehicle.
Engine function test	An engine test run was performed.



Value reducing factors

No.	Component group	Description
1	Misc.	Inspection / maintenance - No evidence - No deduction
2	Misc.	Main inspection - No evidence - No deduction
3	Instrument panel	Air nozzle - centre - Damaged - Replace
4	Misc.	Inspection / maintenance - Due - Perform
5	Front bumper	Front bumper - Scratched - Paint
6	Side panel - rear left side	Side panel - Deformed - Repair and paint

Wear and tear

No.	Component group	Description
1	Wheel / tyres	Wheel cover set - complete - Scratched - No deduction
2	Interior	Interior - Scratch(es) - No deduction

The vehicle shows signs of wear and tear commensurate with its age and use.

Missing parts

Description

Documents - Log book

Equipment - Vehicle key with remote control

Previous damages

No.	Previous damage	Extent of damage (Net)
1	Rear, Side - left, Provided by user / customer	2.194,45 €

Accident damages

No. Accident

1 Side right

Order/Scope of Order

An order was placed to prepare a sales report for the described vehicle. This report includes the following:

- Description of key vehicle information
- Documentation of equipment features
(*Delivery by third-party service providers*)
- Documentation of damage, defects, missing parts
- Documentation of prior damage, unrepaired prior damage, repainting
- A brief visual or functional inspection of the equipment details, if possible.
(*Functional testing of driver assistance systems is not included in the scope of services!*)
- a photographic documentation of the vehicle



Basis for the order

This product is based on the guidelines for vehicle returns and valuations published by Alphabet Fleet GmbH. The expert makes the specific findings in each individual case objectively, within the framework of the prescribed standards, based on their own expertise.

The vehicle inspection takes place in a fully assembled, unassembled state.

Damage or defects that can only be detected during disassembly/diagnostic work or through further investigation remain within the realm of prognostic risk. An increased risk exists due to concealed defects caused by fraudulent misrepresentation and which were not identifiable by the expert.

Damage or defects resulting from normal use or wear and tear of the vehicle will be accepted in accordance with the applicable standard.

There was no explicit identification or monetary consideration of the expected features within the product.

Features which, in their nature and extent, slightly exceed normal use but do not constitute unacceptable damage, will be documented and indicated as signs of wear, if applicable.

Damage or defects that, according to the applicable standard, can no longer be attributed to normal use or wear and tear are listed under "Value Reducing Factors" in the product description.

Depending on the product specification, a monetary ID can be provided. If this takes place, the costs can be 100% d or pro rata depending on the vehicle's age and mileage.

Previous damages

Non-repaired previous damages were found at the vehicle. The necessary repair costs are listed in the expert report or if necessary, are listed in detail in a separately enclosed repair cost calculation.

Comments

Die beigefügte Reparaturkostenkalkulation wurde nach bestem Wissen und Gewissen unter eingeschränkten Besichtigungsbedingung im demontagefreien Zustand erstellt. Es können aufgrund verdeckter Beschädigung erhebliche Mehrkosten und somit Abweichung der für den Unfall ausgewiesenen Reparaturkosten nicht ausgeschlossen werden.



Figure 1: Diagonal front (left)



Figure 2: Diagonal front (right)



Figure 3: Diagonal rear (left)



Figure 4: Diagonal rear (right)

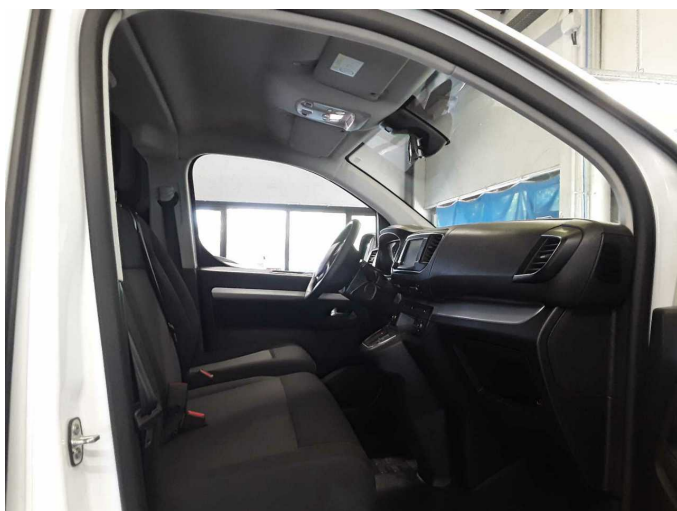


Figure 5: Interior - front



Figure 6: Interior - rear



Figure 7: Instrument cluster



Figure 8: Instrument panel



Figure 9: Interior 360° view

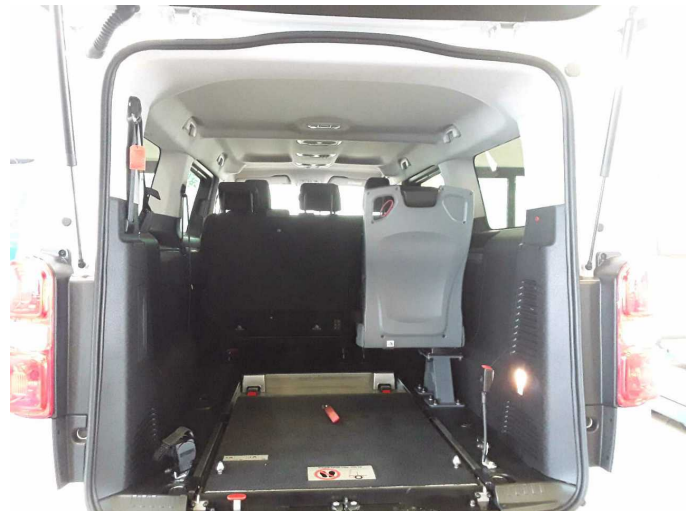


Figure 10: Cargo area

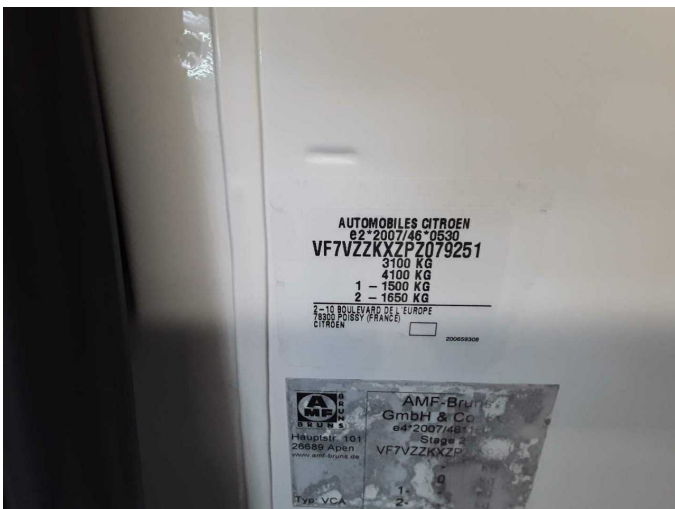


Figure 11: VIN



Figure 12: Mounted tyres



Figure 13: Documents



Figure 14: Navigation



Figure 15: Misc.



Figure 16: Misc.



Figure 17: Misc.



Figure 18: Misc.



Figure 19: Misc.



Figure 20: Misc.



Figure 21: Misc.



Figure 22: Misc.



Figure 23: Misc.

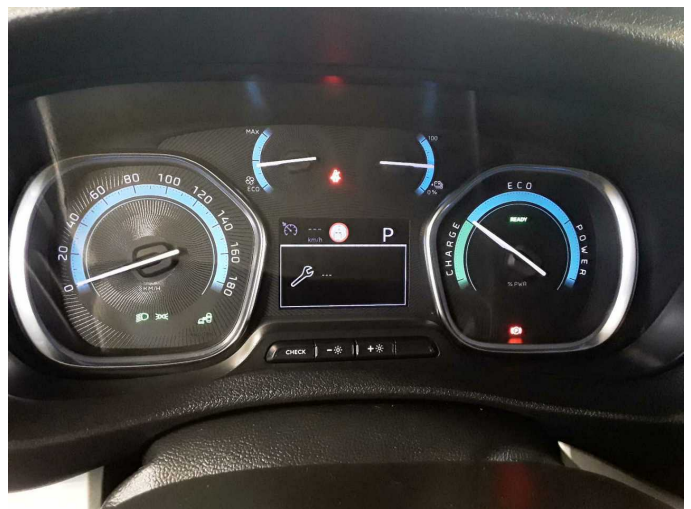


Figure 24: Misc.



Figure 25: Misc.



Damage 3: Instrument panel: Air nozzle - centre - Damaged - Replace



Damage 3: Instrument panel: Air nozzle - centre - Damaged - Replace



Damage 4: Misc.: Inspection / maintenance - Due - Perform



Damage 5: Front bumper: Front bumper - Scratched - Paint



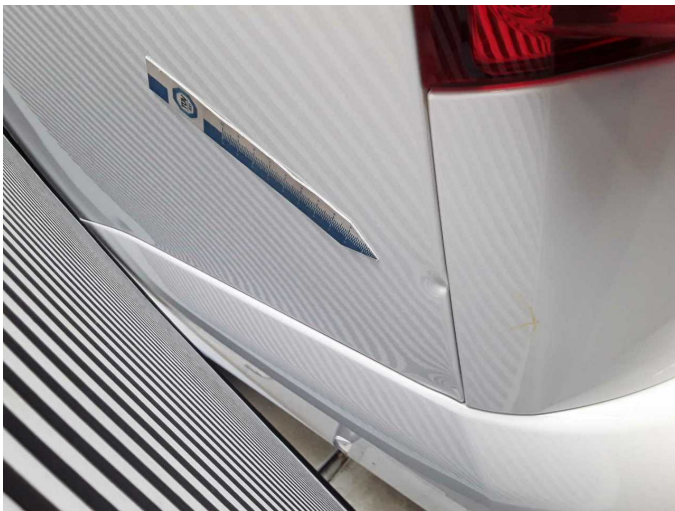
Damage 5: Front bumper: Front bumper - Scratched - Paint



Damage 5: Front bumper: Front bumper - Scratched - Paint



Damage 6: Side panel - rear left side: Side panel - Deformed - Repair and paint



Damage 6: Side panel - rear left side: Side panel - Deformed - Repair and paint



Damage 6: Side panel - rear left side: Side panel - Deformed - Repair and paint



Accident 1: Side right



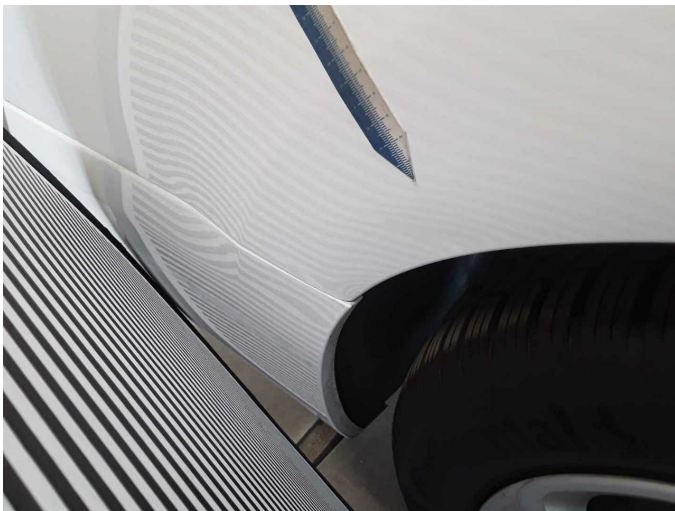
Accident 1: Side right



Accident 1: Side right



Accident 1: Side right



Accident 1: Side right



Accident 1: Side right



Accident 1: Side right