

Expertise

Protocol number: 46107473
Order No. / Reference: 26460668
Inspection date: 23 Jun 2026

Manufacturer: Ford

Model: Mondeo Turnier 2.0 EcoBlue Titanium

VIN: WF0FXXWPCFNY70369



Vehicle details

Manufacturer / Type / Model / Equipment

Ford Mondeo Turnier 2.0 EcoBlue Titanium

Vehicle Identification number WF0FXXWPCFNY70369

Mileage (Read) 139,724 km

First registration 7 Apr 2022

Number of holders 1

Next periodical technical inspection 08/2027
(Report on hand)

Power / Engine displacement 110 kw / 1,995 ccm

Fuel type / Cylinder Diesel / 4

Gearbox / Number of gears Manual / 6

Type of drive Front drive

Type of vehicle Station wagon

Colour / colour code Frozen White

Doors / Seats 5 / 5

Upholstery type Cloth

Colour of upholstery Black



Vehicle details

| | | | |
|--|------------------------------|--------------------------------|--|
| Maintenance booklet / proof | digital proof / complete | Next maintenance in | 94 % |
| Last service on / at | 05/2026 at 138,424 km | | |
| Key is / should be | 2 / 2 | FZG documents | ZB#2 (B) was available (copy), ZB#1 (S) was not available. |
| | | Letter No. | GH429504 |
| Previous damage / Accident | Detectable | Repainting | Detectable |
| Inspection conditions | sufficient | Lifting equipment / pit | No |
| Test drive | Not performed | Engine function test | Performed |
| Manufacturer key number/ type code number | 8566 / BJB 00107 | | |
| Emission standard | EURO6;WLTP;AP;PI/CI; M, N1 I | fine dust sticker | |
| Permitted total weight | 2,330 kg | Empty weight | |

Tyres

Mounted tyres

| # | Tyre size | Type of tyre | Manufacturer | Tread depth |
|----|----------------|-----------------------------|--------------|-------------|
| 1) | 215/55 R17 98V | Summer tyres on Light alloy | Continental | 6mm / 6mm |
| 2) | 215/55 R17 98V | Summer tyres on Light alloy | Continental | 6mm / 6mm |

Additional tyres

| # | Tyre size | Type of tyre | Manufacturer | Tread depth |
|----|----------------|-----------------------------|--------------|-------------|
| 1) | 215/60 R16 99H | Winter tyres on Light alloy | Dunlop | 7mm / 7mm |
| 2) | 215/60 R16 99H | Winter tyres on Light alloy | Dunlop | 6mm / 6mm |

Replacement

| Typ | Tyre size | Type of tyre | Manufacturer | Tread depth |
|-----|----------------|-----------------------|--------------|-------------|
| N | 125/80 R16 97M | Summer tyres on Steel | Maxxis | 6 mm |

Legend: Tread depth information for the left tire is listed first, for the right tire it is listed second on the axle in the direction of travel.

TÜV SÜD Auto Partner GmbH
Wiesenring 2
04159 Leipzig

Inspection location
ARS Altmann AG Automobillogistik
Römerstraße 3
64560 Riedstadt



Equipment



Standard equipment

- Activated carbon filter
- Anti-lock braking system (ABS) with electronic brake force distribution (EBD)
- Attachment points for safety partition grilles (attachment points 2nd row of seats)
- Tires: 7 J x 17 alloy wheels (4) with 215/55 R 17 tires (in 10x2-spoke design in luster nickel premium paint finish)
- Hill start assist
- Chrome trim (surrounding of the side windows)
- Roof rails, aluminum look
- Tachometer
- Electronic Safety and Stability Program (ESP) (with traction control (ASR) and safety brake assist (EBA) - and trailer stabilization function)
- Lane Keeping Assist including Lane Keeping Assist and Driver Alert (including High Beam Assist and Road Edge Detection)
- Electronic parking brake
- Ford Power Start function (with Ford Key Free system - keyless locking/unlocking - second passive vehicle key)
- FordPass Connect including eCall, live traffic information and Wi-Fi hotspot (information about the current status or location of the vehicle as well as control of selected vehicle functions via smartphone with the FordPass app - eCall emergency call system to send an emergency call in the event of an accident or when manually activated - Real-time traffic information - Wi-Fi hotspot (up to 4G/LTE7, for up to 10 mobile devices))
- rear window wiper
- Interior mirror automatically dimming
- Intelligent Protection System (IPS): - Front airbag for driver and front passenger - Knee airbag for driver - Head and shoulder airbags, front and rear - Side airbags for driver and front passenger - Seat belt tensioners and force limiters, front - 3-point seat belts on all seats, height-adjustable at the front)
- Rear headrests (3), height adjustable
- Paint finish: Solid
- Leather gear knob
- Steering column, adjustable (adjustable in height and reach)
- MyKey key system (individually programmable second key) (setting options include: limiting the maximum speed and radio volume, speed warning, safety assistance systems cannot be deactivated, locking of ESP deactivation, extended warning system for unfastened seat belts)
- Fog light
- Emergency brake light (pulsating illumination of the brake lights during hard braking)
- Front and rear parking pilot system
- Pre-Collision Assist (with pedestrian and bicycle detection)
- LED taillights (LED brake lights)
- Windscreen wipers with rain sensor
- Headlight assistant with day/night sensor
- Ambient lighting in the front, including door storage compartment, front door handle and footwell lighting.
- Exterior mirrors in body color, driver and passenger side, electrically adjustable and heated (with integrated turn signals and ambient lighting and electrically foldable)
- Tires: Tire repair kit
- Tires: Tire pressure monitoring system (TPMS)
- third brake light
- headliner, light
- Diesel particulate filter (DPF)
- Front door sill trim
- Driver information system - 25.4 cm color display (digital/analog) (on-board computer with fuel consumption and mileage information)
- Electric front and rear windows (with anti-pinch protection and automatic opening and closing function)
- High Beam Assist
- Ford Easy Fuel (The Ford Easy Fuel convenience refueling system eliminates the need for a separate internal fuel filler cap and prevents misfueling by detecting the size difference between petrol and diesel nozzles. The filler neck only opens when the correct fuel is used.)
- Heated windshield
- luggage compartment cover
- Luggage compartment lighting
- Cruise control system with intelligent speed limiter
- Transmission: 6-speed manual transmission
- Back window, heater
- Interior lighting with delay function (with reading lights, front and rear)
- Isofix mounting (including top tether anchor points on the outer seats of the 2nd row)
- Electric child safety lock
- Air conditioning with automatic temperature control (separately adjustable for driver and passenger side (2-zone automatic climate control))
- Front headrests, 4-way height and tilt adjustable
- LED design daytime running lights in the fog lights
- Steering wheel: Multifunction leather steering wheel
- Reading lights front and rear
- Front center console with padded armrests (storage compartment under the armrest - 2 cup holders)
- Navigation: Ford Navigation including Ford SYNC 3 with AppLink, 8" touchscreen (20.3 cm display) with DAB/DAB+ (8 speakers - steering wheel controls - Bluetooth hands-free calling and audio streaming - 2 USB ports - voice control for audio and phone - SMS text-to-speech function - road map for Europe - acoustic and visual route guidance, dynamic navigation, lane guidance - live traffic in conjunction with FordPass - enhanced voice control - enhanced voice output - Michelin travel guide for Europe)
- Rear seat backrest, foldable, 60:40 split
- Headlight dipped beam with switch-off delay including "greeting function" (halogen headlights)



- Side skirts painted in car color
- Seats: Driver and front passenger seats, 4-way manually adjustable (with manually adjustable lumbar support)
- Seats: Sports seats with fabric upholstery (with enhanced lateral support)
- 12-volt power outlet in the luggage compartment
- Front bumper painted in body color
- Carpet floor mats front and rear
- Lashing eyes in the luggage compartment floor
- Immobiliser
- Central locking (including selective locking (one door/all doors), remote control and luggage compartment remote release)

- Electromechanical speed-dependent power steering
- Seats: Map pocket on the back of the front passenger seat
- Seats: Map pocket on the driver's seat backrest
- Seats: Front seats can be heated individually and variably.
- Start-stop system
- 12-volt socket in the front interior
- Daytime running light
- Traffic sign recognition system
- Warning system for unfastened seat belts in the front and second row of seats
- Cigarette lighter (and ashtray in the center console)

Extra equipment

- Electrically swiveling trailer hitch (ESP trailer stabilization - continuous power supply - switched power supply - hill start assist)
- Anti-theft alarm system including double locking (with interior monitoring) (also with independent power supply)
- Package: Business 2 (Sony navigation system incl. Ford SYNC 3 with AppLink and 8" touchscreen (20.3 cm), additionally with premium sound system and DAB/DAB+ radio, reversing camera, parking assistant with parallel and perpendicular parking function incl. front and rear parking sensors, blind spot information system incl. cross traffic alert and dynamic distance detection, electric tailgate, adaptive LED headlights, LED headlights with adaptive steering and automatic headlight range control, LED daytime running lights, adaptive cruise control)

- Attachment points for safety partition grilles (attachment points 1st row of seats)
- Tires: Spare wheel, emergency wheel (T 125/80 R16)
- Adaptive cruise control with collision warning system
- Paint finish: Frost White
- Package: Winter (Heated windscreen - Heated leather steering wheel - 230-volt socket in center console (not in conjunction with hybrid engine) - Individually and variably heated front seats - Variably heated rear bench seat)
- Side windows from the 2nd row of seats and rear window, dark tinted.
- Safety partition for luggage compartment, 2nd row of seats
- Fuel-operated auxiliary heater (including remote control)

Brief expert findings

| | |
|----------------------|---|
| Documents submitted | At the time of the inspection, the vehicle registration certificate Part 2 (title) was available, but the vehicle registration certificate Part 1 (document) was not. (Copy) |
| VIN comparison | The vehicle identification number (VIN) was read from the vehicle and its conformity with the submitted documents was confirmed by the undersigned during the inspection. |
| Inspection | The inspection conditions were sufficient for the assessment of the vehicle. No lifting equipment or pit was available for inspecting the vehicle. Therefore, inspection of the vehicle's underside was only possible to a limited extent. |
| Test drive | No test drive/shunting maneuver was carried out during the inspection of the vehicle. |
| Engine function test | An engine test run was performed. |

Value reducing factors

| No. | Component group | Description |
|-----|------------------------|--|
| 1 | Door - front left side | Door edge - Scratch(es) - Smart repair |
| 2 | Wheel / tyres | Alloy rim - rear right side - Scratch(es) - Loss in value |
| 3 | Mudguard - right side | Mudguard - right side - dent(s) - Smart repair |
| 4 | Body | B-pillar - left side - Dent / paintcoat damage - Smart repair |
| 5 | Body | Body (Flugrost - Mehrkosten können entstehen) - Soiled - Clean |
| 6 | Vehicle glazing | Windscreen with lane departure assistant - Broken / torn - Replace |



Missing parts

Description

Documents - Service book

Heating system - Remote control auxiliary heating

Previous damages

No. Previous damage

- 1 Rear, Provided by user / customer, from 2 Jan 2025
- 2 Front, Side - left, Provided by user / customer, from 3 Jan 2024

Extent of
damage (Net)

2.412,52 €
13.374,92 €

Repainting

No. Repainting

- 1 Mudguard - left side, Professionally carried out, Invoice of repair done Non-existent
- 2 Mudguard - right side, Professionally carried out, Invoice of repair done Non-existent
- 3 Door - front right side, Professionally carried out, Invoice of repair done Non-existent

Paint coat thickness measurement

Mudguard - left side

201 µm

Mudguard - right side

210 µm

Order/Scope of Order

An order was placed to prepare a sales report for the described vehicle. This report includes the following:

- Description of key vehicle information
- Documentation of equipment features
(*Delivery by third-party service providers*)
- Documentation of damage, defects, missing parts
- Documentation of prior damage, unrepaired prior damage, repainting
- A brief visual or functional inspection of the equipment details, if possible.
(*Functional testing of driver assistance systems is not included in the scope of services!*)
- a photographic documentation of the vehicle

Basis for the order

This product is based on the guidelines for vehicle returns and valuations published by Alphabet Fleet GmbH. The expert makes the specific findings in each individual case objectively, within the framework of the prescribed standards, based on their own expertise.

The vehicle inspection takes place in a fully assembled, unassembled state.

Damage or defects that can only be detected during disassembly/diagnostic work or through further investigation remain within the realm of prognostic risk. An increased risk exists due to concealed defects caused by fraudulent misrepresentation and which were not identifiable by the expert.

Damage or defects resulting from normal use or wear and tear of the vehicle will be accepted in accordance with the applicable standard.

There was no explicit identification or monetary consideration of the expected features within the product.

Features which, in their nature and extent, slightly exceed normal use but do not constitute unacceptable damage, will be documented and indicated as signs of wear, if applicable.

Damage or defects that, according to the applicable standard, can no longer be attributed to normal use or wear and tear are listed under "Value Reducing Factors" in the product description.

Depending on the product specification, a monetary ID can be provided. If this takes place, the costs can be 100% d or pro rata depending on the vehicle's age and mileage.



Previous damages

According to available information previous damages were repaired at the vehicle. Traces of repairs, which allow conclusions about the area of repair, were not recognizable during the inspection.

Comments

Die Unterbodenbesichtigung war nur ebenerdig & eingeschränkt möglich. Mehrkosten möglich.

- Winterradsatz ist kein Bestandteil des Auslieferungsumfangs.



Figure 1: Diagonal front (left)



Figure 2: Diagonal front (right)



Figure 3: Diagonal rear (left)



Figure 4: Diagonal rear (right)



Figure 5: Interior - front



Figure 6: Interior - rear



Figure 7: Instrument cluster



Figure 8: Instrument panel



Figure 9: Interior 360° view



Figure 10: Cargo area



Figure 11: VIN



Figure 12: Mounted tyres

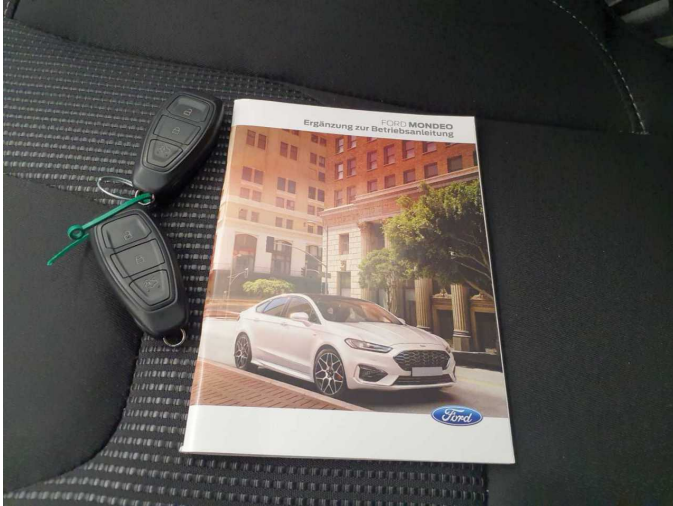


Figure 13: Documents



Figure 14: Documents



Figure 15: Documents



Figure 16: Additional tyres

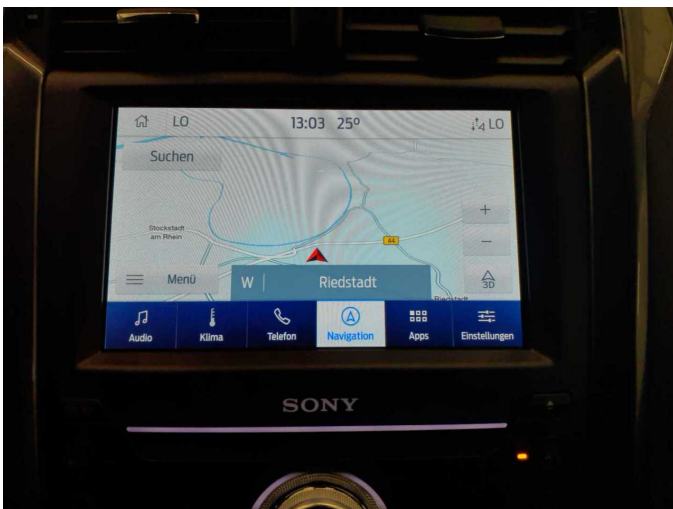


Figure 17: Navigation



Figure 18: Misc.



Figure 19: Misc.



Figure 20: Misc.



Figure 21: Misc.



Figure 22: Misc.



Figure 23: Misc.



Figure 24: Misc.

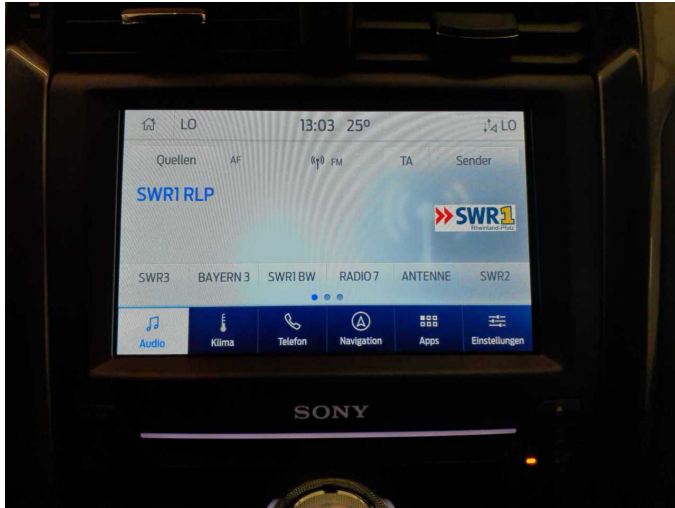


Figure 25: Misc.



Figure 26: Misc.



Figure 27: Misc.



Figure 28: Misc.



Figure 29: Misc.



Figure 30: Misc.



Figure 31: Misc.



Figure 32: Misc.



Damage 1: Door - front left side: Door edge - Scratch(es) - Smart repair



Damage 1: Door - front left side: Door edge - Scratch(es) - Smart repair



Damage 1: Door - front left side: Door edge - Scratch(es) - Smart repair



Damage 2: Wheel / tyres: Alloy rim - rear right side - Scratch(es) - Loss in value



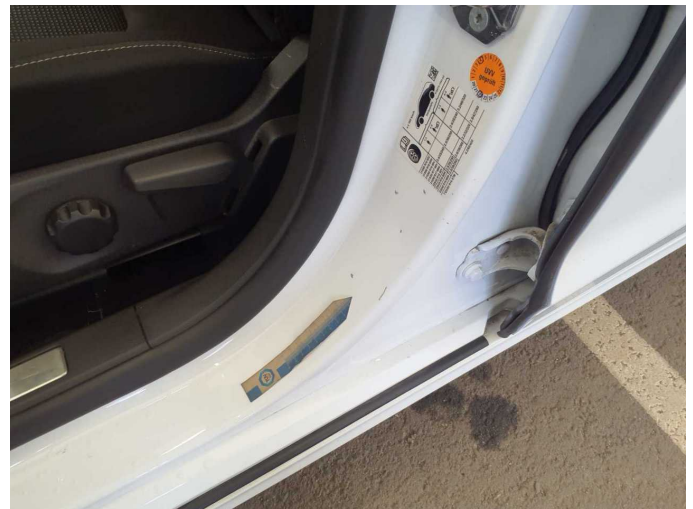
Damage 2: Wheel / tyres: Alloy rim - rear right side - Scratch(es) - Loss in value



Damage 3: Mudguard - right side: Mudguard - right side - dent(s) - Smart repair



Damage 3: Mudguard - right side: Mudguard - right side - dent(s) - Smart repair



Damage 4: Body: B-pillar - left side - Dent / paintcoat damage - Smart repair



Damage 4: Body: B-pillar - left side - Dent / paintcoat damage - Smart repair



Damage 5: Body: Body (Flugrost - Mehrkosten können entstehen) - Soiled - Clean



Damage 5: Body: Body (Flugrost - Mehrkosten können entstehen) - Soiled - Clean



Damage 5: Body: Body (Flugrost - Mehrkosten können entstehen) - Soiled - Clean



Damage 5: Body: Body (Flugrost - Mehrkosten können entstehen) - Soiled - Clean



Damage 5: Body: Body (Flugrost - Mehrkosten können entstehen) - Soiled - Clean



Damage 5: Body: Body (Flugrost - Mehrkosten können entstehen) - Soiled - Clean



Damage 5: Body: Body (Flugrost - Mehrkosten können entstehen) - Soiled - Clean



Damage 5: Body: Body (Flugrost - Mehrkosten können entstehen) - Soiled - Clean



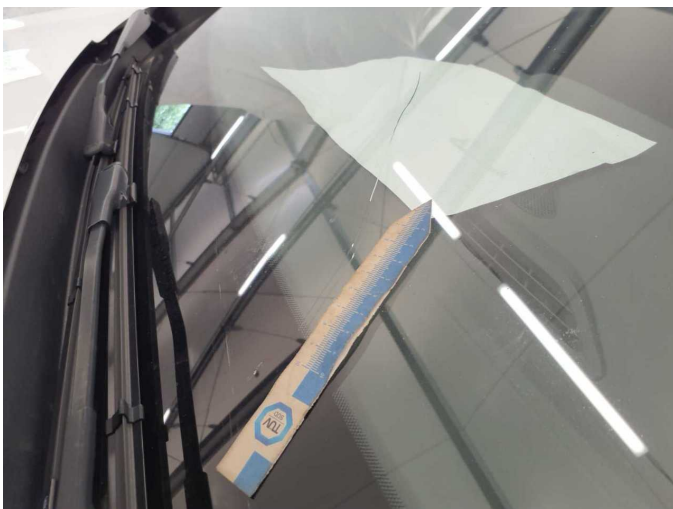
Damage 5: Body: Body (Flugrost - Mehrkosten können entstehen) - Soiled - Clean



Damage 5: Body: Body (Flugrost - Mehrkosten können entstehen) - Soiled - Clean



Damage 6: Vehicle glazing: Windscreen with lane departure assistant - Broken / torn - Replace



Damage 6: Vehicle glazing: Windscreen with lane departure assistant - Broken / torn - Replace



Damage 6: Vehicle glazing: Windscreen with lane departure assistant - Broken / torn - Replace



Repainting 1: Mudguard - left side



Repainting 1: Mudguard - left side



Repainting 2: Mudguard - right side



Repainting 2: Mudguard - right side



Repainting 3: Door - front right side



Repainting 3: Door - front right side



Wartungshistorie

(gemäß Auftraggeber Informationen)

Fahrgestellnummer: WF0FXXWPCFNY70369
Hersteller / Modell: FORD FORD Mondeo Turnier 2.0 EcoBlue Titanium

| Datum | KM-Stand | Beschreibung |
|------------|----------|--|
| 08.05.2026 | 138.424 | Motoröl b. Wartung; Ölfilter ern; Regelwartungsdienst; Wartung Sonstiges |
| 28.01.2026 | 129.923 | Kraftstofffilter ern; Reparatur Sonstiges; Systemtest/Eigendiagnose |
| 12.09.2025 | 116.780 | Reparatur Sonstiges |
| 14.08.2025 | 114.481 | AU; Bremsklötze hinten |
| 12.08.2025 | 109.379 | Motoröl b. Wartung; Ölfilter ern; Regelwartungsdienst; Systemtest/ Eigendiagnose; Wartung Sonstiges |
| 20.01.2025 | 95.050 | Batterie ern; Systemtest/Eigendiagnose |
| 15.01.2025 | 94.709 | Systemtest/Eigendiagnose |
| 13.11.2024 | 89.257 | Bremse Sonstiges; Bremsklötze vorne; Bremsscheiben + Klötze v; Bremsscheiben vorne; Motoröl b. Wartung; Ölfilter ern; Regelwartungsdienst; Wartung Sonstiges |
| 04.09.2024 | 83.886 | Systemtest/Eigendiagnose |
| 19.07.2024 | 78.164 | Bremsflüssigkeit; Bremsflüssigkeit ern; Motoröl b. Wartung; Ölfilter ern; Ölwechsel; Wartung Sonstiges |
| 02.11.2023 | 58.060 | Bremse Sonstiges; Bremsklötze hinten; Kraftstofffilter ern; Luftfiltereinsatz ern; Motoröl b. Wartung; Ölfilter ern; Regelwartungsdienst; Wartung Sonstiges |
| 16.06.2023 | 41.050 | Bremsklötze vorne |
| 17.03.2023 | 33.122 | Motoröl b. Wartung; Regelwartungsdienst |
| 14.12.2022 | 23.826 | Motoröl b. Wartung; Ölwechsel |