

## Expertise

Protocol number: 45947043  
Order No. / Reference: 26457222  
Inspection date: 15 Jun 2026

Manufacturer: Mercedes-Benz

Model: 317 CDI Sprinter Standard HA 9G-TRONIC

VIN: W1V9076331P402270



### Vehicle details

#### Manufacturer / Type / Model / Equipment

Mercedes-Benz 317 CDI Sprinter Standard HA 9G-TRONIC

**Vehicle Identification number** W1V9076331P402270

**Mileage (Read)** 138,164 km

**First registration** 23 Nov 2021

**Number of holders** 1

**Power / Engine displacement** 125 kw / 1,950 ccm

**Fuel type / Cylinder** Diesel / 4

**Gearbox / Number of gears** Automatic / 9

**Type of drive** Rear drive

**Type of vehicle** Van

**Colour / colour code** Selenite Grey Metallic  
7992

**Doors / Seats** 4 / 2

**Upholstery type** Cloth

**Colour of upholstery** Black

**Re-import** no

**readiness to drive** Roadworthy



## Vehicle details

<b>Maintenance booklet / proof</b>	Non-existent	<b>Next maintenance in</b>	257 Tag(e)
<b>Key is / should be</b>	4 / 4	<b>FZG documents</b>	ZB#2 (B) was available (copy), ZB#1 (S) was not available.
		<b>Letter No.</b>	GE645256
<b>Previous damage / Accident</b>	Detectable	<b>Repainting</b>	Detectable
<b>Inspection conditions</b>	sufficient	<b>Lifting equipment / pit</b>	yes
<b>Test drive</b>	Not performed	<b>Engine function test</b>	Performed
<b>readiness to drive</b>	Roadworthy		
<b>Manufacturer key number/ type code number</b>	2222 / BBH 08488		
<b>Emission standard</b>	EURO6;WLTP;CI;PI/CI;N1 III, N2	<b>fine dust sticker</b>	
<b>Permitted total weight</b>	3,500 kg	<b>Empty weight</b>	

## Tyres

### Mounted tyres

#	Tyre size	Type of tyre	Manufacturer	Tread depth
1)	235/65 R16 121R	Winter tyres on Steel rim with wheel cover	Continental	5mm / 5mm
2)	235/65 R16 121R	Winter tyres on Steel rim with wheel cover	Continental	5mm / 5mm

### Additional tyres

#	Tyre size	Type of tyre	Manufacturer	Tread depth
1)	235/65 R16 115R	Summer tyres on Steel	Continental	5mm / 5mm
2)	235/65 R16 115R	Summer tyres on Steel	Continental	5mm / 5mm

### Replacement

Typ	Tyre size	Type of tyre	Manufacturer	Tread depth
E	235/65 R16 115R	Summer tyres on Steel	Continental	7 mm

**Legend: Tread depth information for the left tire is listed first, for the right tire it is listed second on the axle in the direction of travel.**



## Equipment

### Standard equipment

- Storage compartment above windshield
- Rear towing eye
- ADAPTIVE ESP (latest generation) with load- and speed-dependent driving dynamics control
- Outdoor temperature display
- Battery: fleece battery 12 V / 92 Ah
- third brake light
- COC documents
- Tachometer
- Driving light assistant
- Generator 14 V / 200 A
- Transmission: 9G-TRONIC
- Grab handle for entry to the cargo area sliding door on the partition wall
- Instrument panel and combination instrument with various storage options
- Headrests (2), front
- Steering wheel adjustable for tilt and height
- Mercedes-Benz emergency call system
- Breakdown management
- Radio: Radio preparation
- Radio accessories: Communication module (LTE) for digital services
- Wheels: Steel rims 6.5 J x 16
- Crosswind Assist
- Seats: Passenger seat armrest
- Seats: Adjustable passenger seat
- Speedometer km/h
- First aid kit
- Pre-installation for Remote Services Plus
- Immobiliser
- Central locking with radio remote control
- Registration certificate, Part II
- Storage compartment under cockpit
- Axle ratio  $i = 3.923$
- Driver's side airbag
- Electrically adjustable and heated exterior mirrors, left and right
- Hill start assist
- Brake lights, adaptive
- Diesel particulate filter and SCR
- Entry handle on rear right corner pillar
- Electric window regulator for driver and passenger door
- Noise measures
- Seatbelt warning device for driver's seat
- Main tank 71 liters
- HOLD function
- KEYLESS start
- Child safety locks on doors in the passenger compartment
- Paint finish: Solid color paint
- Headlight range control
- Without weight increase/decrease: 3,500 kg
- Upholstery: Cloth
- Radio: Pre-installation for digital radio DAB
- Tires: Tires without specified make
- Tires: Premium protection tires (3 years)
- Sliding door on the right, cargo/passenger compartment
- Power steering
- Seats: Driver's seat armrest
- Start-stop function
- continuous partition wall
- Lashing eyes
- Warning triangle
- Heat-insulating glass
- Approval N1



## Extra equipment

- Storage above roof lining
- Towbar (fixed ball head)
- Entrance rear door
- Tachograph controls at the front under the headliner
- Digital operating instructions
- Chassis stabilization level 1
- Generator 14 V / 250 A
- Main tank 93 liters
- Interior lining of the cargo area up to roof height (wood)
- Hinged lid for storage compartment
- Tempmatic controlled air conditioning
- Cargo area floor with different paint finish
- LED light strip in the cargo area
- Cable duct on side wall
- Marker lights, side
- Navigation (linguatron voice control, Wi-Fi hotspot, multimedia connection unit for connecting portable devices via an additional USB-C interface, center fill speaker for improved sound and voice output, improved hands-free function, dual-phone operation, digital operating instructions)
- Package: Acoustics in conjunction with MBUX
- Package: Instrument panel charging package in conjunction with MBUX (The charging package expands the charging options in the cockpit with two 5V USB-C ports and one 12V socket. One USB port and the 12V socket are installed in the center storage compartment of the instrument panel, and another USB port is located in the lower part of the center console. This allows for the charging of electronic devices such as mobile phones within easy reach of the driver and front passenger.)
- Seats: Armrest, driver and passenger door
- Seats: Comfort driver's seat
- Power outlet in passenger compartment
- Partition wall with 1 continuous window
- WET WIPER SYSTEM
- Würth installation
- Passenger side airbag
- 13-pin trailer socket
- Electrically folding exterior mirrors
- Ceiling light in the cargo/passenger compartment (with door contact)
- Front right window fixed in SW/ cargo area sliding door
- Seatbelt warning device for front passenger seat
- High roof
- Intelligent tachograph EU
- Clothes hooks in the driver's cab
- Paint finish: Metallic
- LED High Performance Headlights
- Cable duct at rear portal
- Steering wheel: Multifunction steering wheel
- MBUX multimedia system with 7-inch touchscreen (High-resolution 7-inch touchscreen (960 x 540 pixels), AM/FM radio with dual tuner, Bluetooth connectivity with audio streaming and hands-free function, smartphone integration via Android Auto or Apple CarPlay, multimedia connection unit for connecting portable devices via a USB-C interface, 4 x 25 W output power, sound adjustment, separate volume control for audio and telephone, 2-way front speakers)
- Radio: Digital Radio DAB
- Rain sensor
- Spare wheel
- Spare wheel carrier with jack (under frame end)
- Rear view camera
- Keys: 2 additional master keys
- Rear mud flaps
- Front mud flaps
- Seats: Comfort passenger seat
- 12V socket in the trunk/cargo area
- Cruise control
- Hot water auxiliary heater (5 kW)
- Heat-insulating glass with band filter on the windshield

## Brief expert findings

Documents submitted	At the time of the inspection, the vehicle registration certificate Part 2 (title) was available, but the vehicle registration certificate Part 1 (document) was not. (Copy)
VIN comparison	The vehicle identification number (VIN) was read from the vehicle and its conformity with the submitted documents was confirmed by the undersigned during the inspection.
Inspection	The inspection conditions were sufficient for the assessment of the vehicle. Lifting equipment and/or a pit were available for examining the vehicle.
Test drive	No test drive/shunting maneuver was carried out during the inspection of the vehicle.
Engine function test	An engine test run was performed.
readiness to drive	The vehicle was roadworthy at the time of inspection.



## Value reducing factors

No.	Component group	Description
1	Misc.	Inspection / maintenance - No evidence - No deduction
2	Braking system	Brake fluid - No evidence - No deduction
3	Side panel - rear left side	Side panel - dent(s) - Smooth repair work
4	Body	B-pillar - right side - Scratch(es) - Smart repair
5	Body	Body - Glued / labelled - De-glue / neutralise
6	Rear of vehicle	Foot plate - Broken / torn - Replace
7	Bonnet	Bonnet - Stone chips - Paint
8	Sliding door, right	Sliding door - Scratch(es) - Paint

## Wear and tear

No.	Component group	Description
1	Door - front right side	Door - Scratch(es) - No deduction
2	Boot lid / rear door	Rear door - right side (Innen) - Scratch(es) - No deduction
3	Front bumper	Front bumper (unpainted) - dent(s) - No deduction
4	Interior	Cargo space partition (Regaleinbauten) - Differs from the original configuration - No deduction

The vehicle shows signs of wear and tear commensurate with its age and use.

## Missing parts

### Description

Documents - Service book (Digitale Nachweise)

## Previous damages

No.	Previous damage	Extent of damage (Net)
1	Rear, Professionally repaired, Invoice of repair done Non-existent	

## Repainting

### No. Repainting

1 Boot lid / rear door, Professionally carried out, Invoice of repair done Non-existent

## Paint coat thickness measurement

Boot lid / rear door 207 µm |

## Order/Scope of Order

An order was placed to prepare a sales report for the described vehicle. This report includes the following:

- Description of key vehicle information
- Documentation of equipment features  
(*Delivery by third-party service providers*)
- Documentation of damage, defects, missing parts
- Documentation of prior damage, unrepaired prior damage, repainting
- A brief visual or functional inspection of the equipment details, if possible.  
(*Functional testing of driver assistance systems is not included in the scope of services!*)
- a photographic documentation of the vehicle



## Basis for the order

This product is based on the guidelines for vehicle returns and valuations of light commercial vehicles published by Alphabet Fleet Management GmbH. The expert makes the specific findings in each individual case objectively, within the framework of the prescribed standards, based on their own expertise.

The vehicle inspection takes place in a fully assembled, unassembled state.

Damage or defects that can only be detected during disassembly/diagnostic work or through further investigation remain within the realm of prognostic risk. An increased risk exists due to concealed defects caused by fraudulent misrepresentation and which were not identifiable by the expert.

Damage or defects resulting from normal use or wear and tear of the vehicle will be accepted in accordance with the applicable standard.

There was no explicit identification or monetary consideration of the expected features within the product.

Features which, in their nature and extent, slightly exceed normal use but do not constitute unacceptable damage, will be documented and indicated as signs of wear, if applicable.

Damage or defects that, according to the applicable standard, can no longer be attributed to normal use or wear and tear are listed under "Value Reducing Factors" in the product description.

Depending on the product specification, a monetary ID can be provided. If this takes place, the costs can be 100% d or pro rata depending on the vehicle's age and mileage.

## Previous damages

Professionally repaired previous damages were found at the vehicle.

## Comments

- Für den montierten Radsatz wurde kein Nachweis erbracht.

- Winterradsatz ist kein Bestandteil des Auslieferungsumfangs.



Figure 1: Diagonal front (left)



Figure 2: Diagonal front (right)



Figure 3: Diagonal rear (left)



Figure 4: Diagonal rear (right)

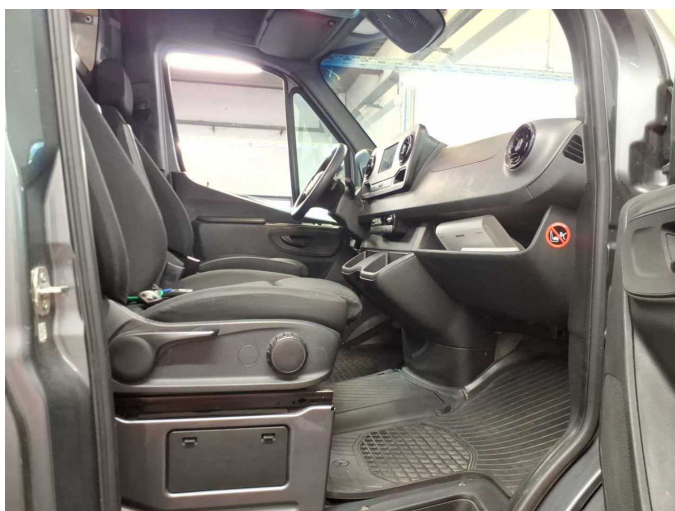


Figure 5: Interior - front



Figure 6: Interior - rear



Figure 7: Instrument cluster



Figure 8: Instrument panel



Figure 9: Interior 360° view



Figure 10: Cargo area



Figure 11: VIN



Figure 12: Mounted tyres



Figure 13: Mounted tyres



Figure 14: Documents



Figure 15: Additional tyres



Figure 16: Additional tyres



Figure 17: Navigation



Figure 18: Misc.



Figure 19: Misc.



Figure 20: Misc.



Figure 21: Misc.



Figure 22: Misc.



Figure 23: Misc.



Figure 24: Misc.



Figure 25: Misc.



Figure 26: Misc.



Figure 27: Misc.



Figure 28: Misc.

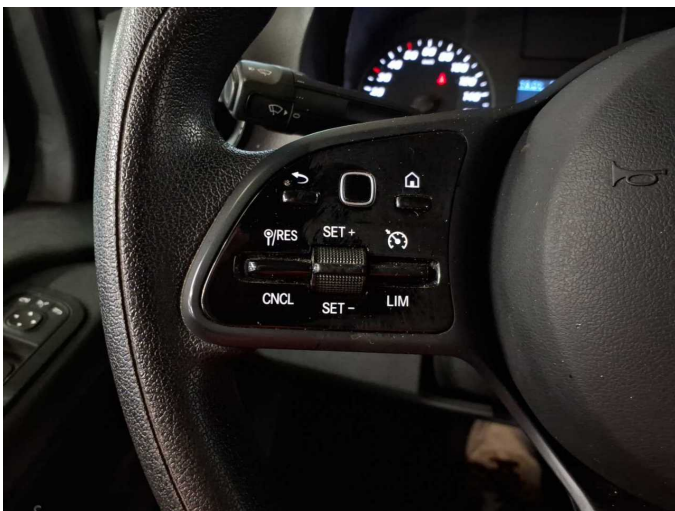


Figure 29: Misc.



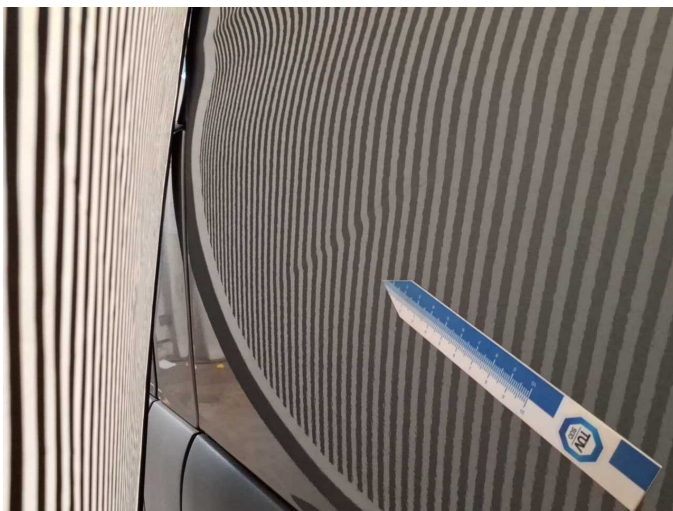
Figure 30: Misc.



Figure 31: Misc.



Damage 3: Side panel - rear left side: Side panel - dent(s) - Smooth repair work



Damage 3: Side panel - rear left side: Side panel - dent(s) - Smooth repair work



Damage 4: Body: B-pillar - right side - Scratch(es) - Smart repair



Damage 4: Body: B-pillar - right side - Scratch(es) - Smart repair



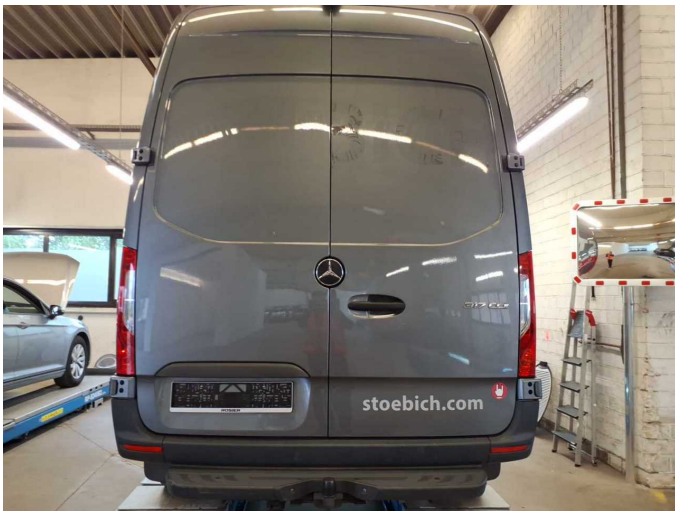
Damage 5: Body: Body - Glued / labelled - De-glug / neutralise



**Damage 5:** Body: Body - Glued / labelled - De-glude / neutralise



**Damage 5:** Body: Body - Glued / labelled - De-glude / neutralise



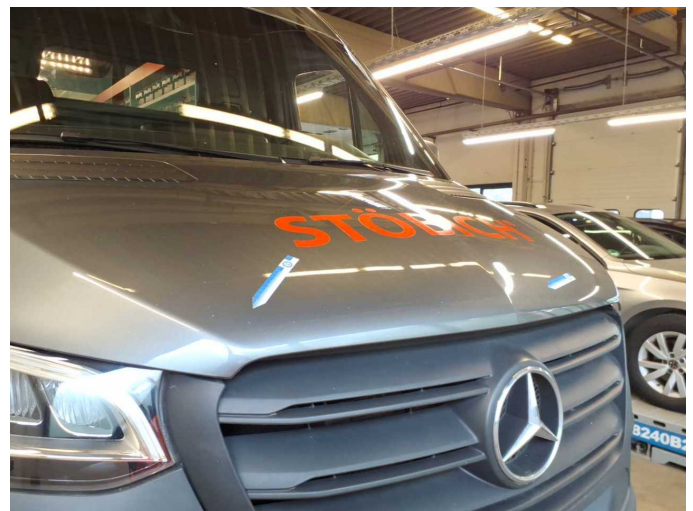
**Damage 5:** Body: Body - Glued / labelled - De-glude / neutralise



**Damage 6:** Rear of vehicle: Foot plate - Broken / torn - Replace



**Damage 6:** Rear of vehicle: Foot plate - Broken / torn - Replace



**Damage 7:** Bonnet: Bonnet - Stone chips - Paint



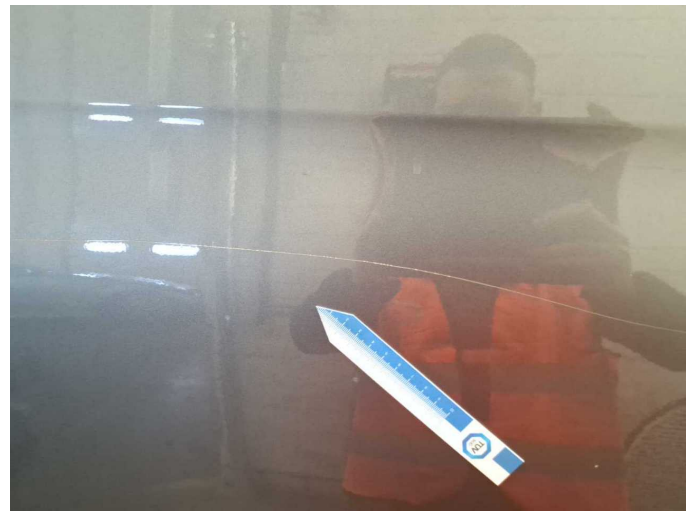
**Damage 7:** Bonnet: Bonnet - Stone chips - Paint



**Damage 7:** Bonnet: Bonnet - Stone chips - Paint



**Damage 8:** Sliding door, right: Sliding door - Scratch(es) - Paint



**Damage 8:** Sliding door, right: Sliding door - Scratch(es) - Paint



**Damage 8:** Sliding door, right: Sliding door - Scratch(es) - Paint



**Repainting 1:** Boot lid / rear door