



**PEUGEOT 2008: GC-021-XT**

Vinnnumber:	<b>VR3USHNSSMJ892126</b>	Versionname:	<b>PEUGEOT 2008 PureTech 130 S&amp;S EAT8 ACTIVE BUSINESS VP [5P] bva 8-130CH-7cv (SUV)</b>
First Registrationdate:	<b>10/11/2021</b>	Fiscalpower:	
Expertise Mileage:	<b>66563</b>	Power Kw:	<b>96</b>
Bodytype:	<b>SUV</b>	Body colour:	<b>Black</b>
Gearbox:	<b>Automatic</b>	Paint type:	<b>Metalic</b>
Transmission:	<b>Front</b>	Interior colour:	<b>Dark Grey</b>
Fueltype:	<b>Petrol</b>	Type of rims (mounted):	<b>Aluminium</b>
Engine functioning:	<b>Yes</b>	Dashboard color:	<b>Black</b>
Battery functioning:	<b>Yes</b>		
Vehicle running:	<b>Yes</b>		
Number of doors:	<b>5</b>		
Number of seats:	<b>5</b>		
Number head rests:	<b>5</b>		
Type of rims (mounted):	<b>Aluminium</b>		
Category:	<b>Passenger Car</b>		

**Options**

Number of keys total:	<b>2</b>	Radio:	
Number keys remote:	<b>1</b>	Luggage cover:	
GPS big screen color:		Headlights Xenon/LED/Laser:	
Windows electric F:		Rear parking sensors:	
Windows electric R:		Seat cover lining:	<b>Lining Other</b>
Cruise Control:			
Steering wheel multifunctional:			
Steering wheel leather:			
Type of climate control:	<b>Autom climate control</b>		

**Tyres**

<b>215/65/16/98 H</b>				
Summer tyres:	Fr.L.	<b>Other: 25%</b>	Fr.R.	<b>Other: 30%</b>
	Re.L.	<b>Other: 35%</b>	Re.R.	<b>Other: 30%</b>
Tyre profile depth FL				<b>6.7</b>
Tyre profile depth FR				<b>6.3</b>
Tyre profile depth RL				<b>6.0</b>
Tyre profile depth RR				<b>6.2</b>
Tyre size FL				<b>215/65 R 16 98 H</b>
Tyre size FR				<b>215/65 R 16 98 H</b>
Tyre size RL				<b>215/65 R 16 98 H</b>
Tyre size RR				<b>215/65 R 16 98 H</b>
Tyre type FL				<b>Summer</b>
Tyre type FR				<b>Summer</b>
Tyre type RL				<b>Summer</b>
Tyre type RR				<b>Summer</b>
Tyre make FL				<b>263</b>
Tyre make FR				<b>263</b>
Tyre make RL				<b>263</b>
Tyre make RR				<b>263</b>

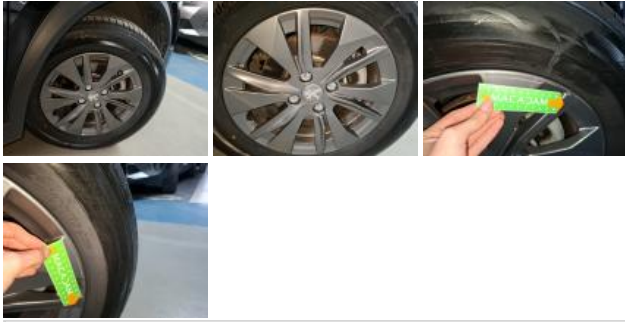
**Assistance equipment**

Emergency spare wheel:	<b>Yes</b>	Jack:	<b>Yes</b>
<b>Alloy rim RR, Scratch(es), Repair/replace (lump sum)</b>			





Alloy rim FR, Scratch(es), Repair/replace (lump sum)



Door FL, Dent(s) and scratch(es), Repair and paint (complete)



Bumper moulding F, Scratch(es), Replace



Wing trim FR, Scratch(es), Replace



Wing trim RR, Scratch(es), Replace



Door FR, Dent(s) and scratch(es), Repair and paint (complete)



Bumper corner RL, Scratch(es), Paint



Bumper moulding R, Scratch(es), Acceptable



Bumper corner RR, Scratch(es), Acceptable



# Historique Maintenance

Immatriculation: **GC-021-XT**

Date de 1ère immatriculation: **10/11/2021**

Modèle: **Peugeot 2008 PureTech 130 S&S EAT8 ACTIVE BUSINESS VP [5P] bva 8-130CH-7cv (SUV)**

Date	Kilométrage	Fournisseur	Descriptif
20/11/2025	56.488	DEKRA AUTOMOTIVE S.A	CONTROLE TECHNIQUE
03/11/2025	55.954	VAUBAN AUTOMOBILE - HERBLAY	FILTRE A AIR RPLT
	0		RECYCLAGE
	0		LIQUIDE DE FREIN
	0		DIVERS ELEC
	0		BOITIER D ALLUMAGE RPLT
31/01/2025	46.532	VAUBAN AUTOMOBILE - HERBLAY	RECYCLAGE
	0		REVISION
	0		FILTRE CLIM RPLT
	0		BALAI ESSUIE GLACE AR
	0		BALAI ESSUIE GLACE AV
29/12/2023	33.107	VAUBAN AUTOMOBILE - HERBLAY	RECYCLAGE
	0		REVISION
	0		FILTRE CLIM RPLT
	0		LIQUIDE DE FREIN
	0		FILTRE A AIR RPLT
	0		BOITIER D ALLUMAGE RPLT
	0		BALAI ESSUIE GLACE AR
	0		BALAI ESSUIE GLACE AV
	0		PLAQUETTES AV RPLT
02/12/2022	16.038	TRUJAS SAS	RECYCLAGE
	0		REVISION ET CLIM
	0		REVISION ET CLIM
01/08/2022	7.830	RIESTER NEWCO	DIVERS ECHAPPEMENT