

## Expertise

Protocol number: 45491779  
Order No. / Reference: 26308054  
Inspection date: 16 May 2026

Manufacturer: Peugeot

Model: 5008 BlueHDi 130 EAT8 GT

VIN: VF3MCYHZUNS162159



### Vehicle details

#### Manufacturer / Type / Model / Equipment

Peugeot 5008 BlueHDi 130 EAT8 GT

**Vehicle Identification number** VF3MCYHZUNS162159

**Mileage (Read)** 68,192 km

**First registration** 21 Feb 2023

**Number of holders** 1

**Power / Engine displacement** 96 kw / 1,499 ccm

**Fuel type / Cylinder** Diesel / 4

**Gearbox / Number of gears** Automatic / 8

**Type of drive** Front drive

**Type of vehicle** SUV

**Colour / colour code** Perla Nera Schwarz  
Metallic

**Doors / Seats** 5 / 5

**Upholstery type** Cloth / leather  
combination

**Colour of upholstery** Black



## Vehicle details

|  |                              |                                |  |
|--|------------------------------|--------------------------------|--|
| <b>Maintenance booklet / proof</b>               | digital proof / complete     | <b>Next maintenance in</b>     | 27,300 km  |
| <b>Last service on / at</b>                      | 02/2026 at 65,565 km         |                                |  |
| <b>Key is / should be</b>                        | 2 / 2                        | <b>FZG documents</b>           | ZB#2 (B) was available (copy), ZB#1 (S) was not available. |
|  |                              | <b>Letter No.</b>              | GC191738   |
| <b>Previous damage / Accident</b>                | None detectable              | <b>Repainting</b>              | None detectable  |
| <b>Inspection conditions</b>                     | sufficient                   | <b>Lifting equipment / pit</b> | yes  |
| <b>Test drive</b>                                | Not performed                | <b>Engine function test</b>    | Performed  |
| <b>Manufacturer key number/ type code number</b> | 3003 / AZJ 00263             |                                |  |
| <b>Emission standard</b>                         | EURO6;WLTP;AP;PI/CI; M, N1 I | <b>fine dust sticker</b>       |  |
| <b>Permitted total weight</b>                    | 2,230 kg                     | <b>Empty weight</b>            |  |

## Tyres

### Mounted tyres

| #  | Tyre size       | Type of tyre                | Manufacturer | Tread depth |
|----|-----------------|-----------------------------|--------------|-------------|
| 1) | 215/55 R17 103H | Winter tyres on Light alloy | Pirelli      | 5mm / 5mm   |
| 2) | 215/55 R17 103H | Winter tyres on Light alloy | Pirelli      | 5mm / 5mm   |

### Additional tyres

| #  | Tyre size       | Type of tyre                | Manufacturer | Tread depth |
|----|-----------------|-----------------------------|--------------|-------------|
| 1) | 225/55 R18 102V | Summer tyres on Light alloy | Michelin     | 5mm / 5mm   |
| 2) | 225/55 R18 102V | Summer tyres on Light alloy | Michelin     | 5mm / 5mm   |

**Legend: Tread depth information for the left tire is listed first, for the right tire it is listed second on the axle in the direction of travel.**

TÜV SÜD Auto Partner GmbH  
Wiesenring 2  
04159 Leipzig

Inspection location  
Hartmann Fleet Professionals GmbH  
Leerenstraße 25  
29683 Bad Fallingbommel



## Equipment



## Standard equipment

- ABS (Anti-lock Braking System)
- Airbag for driver and front passenger (passenger airbag can be deactivated)
- Active Blind Spot Assist
- Electrically folding exterior mirrors with LED approach lighting
- Electrically adjustable and heated exterior mirrors with integrated LED turn signals
- On-board computer (outside temperature and maintenance display - average and current fuel consumption - remaining range - distance traveled - average speed)
- Black Diamond roof (roof in Perla Nera black) (exterior mirror caps in Perla Nera black - rear spoiler in glossy black)
- Alcantara "Greval" decorative inserts for door panels and dashboard
- Digital instrument cluster with high-resolution 12.3" screen, adjustable and customizable
- Rear parking aid, acoustic and visual
- ESP (Electronic Stability Program) with ASR (Anti-Slip Regulation)
- Misfueling protection
- Electric front and rear windows (with comfort operation and anti-pinch protection)
- High beam assist
- Follow-me-home function (automatic)
- Front bumper in chrome look
- Floor mats (front and rear)
- Cruise control system with speed limiter
- Cup holder in the center console
- Illuminated glove compartment
- Heated rear window
- rear window wiper
- Interior mirror automatically dimming
- Frameless interior mirror
- Keyless system (keyless access and start system)
- Child safety locks on the rear doors
- Automatic climate control (2-zone), with activated carbon filter (separately adjustable for driver and front passenger)
- Rear headrests (3) (height adjustable and lowerable)
- White LED ambient lighting in the front footwell
- LED daytime running lights and LED turn signals at the front
- light sensor
- Makeup mirror (illuminated for driver and front passenger)
- Fatigue warning
- Navigation system: 3D navigation system NAC (3D navigation including 3D display of buildings and monuments - voice recognition for navigation, telephone and media - operation via touchscreen with 10" HD color screen - map transfer to the digital instrument cluster - multifunctional touchscreen - capacitive screen - piano key toggle switches)
- Active Safety Brake Plus (for nighttime use and cyclists)
- Airbag: Front and rear side airbags
- Airbag: Curtain airbags front and rear
- Adaptive Cruise Control (ACC) with Stop & Go function including lane positioning assistant (and Active Safety Brake Plus (for night driving and cyclists))
- Exterior mirrors in Perla Nera Black
- Hill start assist
- third brake light
- Chrome trim strips on the lower part of the doors
- Chrome trim strips above the side windows
- Chrome trim strips below the side windows
- Black headliner
- Aluminum roof rails
- Ceiling light - LED at the front, in row 2 and in row 3, 2 LED reading lights at the front, in row 2 and in row 3
- Decorative trim on the dashboard and door panels in satin chrome
- EBV (Electronic Brakeforce Distribution)
- Front parking aid, acoustic and visual
- Driving mode switch (Sport - Normal - Eco) (Sport mode to activate the following functions: - Display of driving dynamics parameters on the instrument cluster - More responsive accelerator pedal response - More responsive power steering - Increased engine noise)
- electric parking brake
- Front collision warning
- Full LED headlights with automatic headlight range control (with static cornering lights and (Foggy Mode) function)
- Transmission: 8-speed automatic transmission EAT8
- Seat belts: 3-point seat belts (Front seats: - Height-adjustable three-point seat belts with belt locks - Pyrotechnic belt tensioners and electronically controlled belt force limiters - Warning light and warning signal when the seat belt is not fastened or is released for driver and front passenger Rear seats: - 3 three-point seat belts - 3 three-point Isofix child seat anchors in the 2nd row - Belt force limiters on the side seats - Warning light and warning signal when the seat belt is released)
- Front headrests (2) (Safety optimized)
- Chrome-plated loading sill protector
- Blue LED lighting on the door panel
- Steering wheel: Multifunction leather steering wheel
- Steering wheel: small multifunction steering wheel, flattened at the top and bottom
- Front center armrest, two-piece, with storage compartment, illuminated and climate-controlled
- Emergency brake assist (with automatic activation of the hazard warning lights)
- Package: Children's package (folding tables on the front seatbacks - map pockets on the front seatbacks - sunshades in row 2)
- Particulate filter: FAP diesel particulate filter
- Aluminum pedals and stainless steel door sills



- Peugeot Connect Box (with the free telematics services Peugeot Connect SOS and Peugeot Connect Assistance - GPS module - Integrated European SIM card - Speaker and microphone - Emergency battery)
- Radio: Mirror Screen (Mirror Screen (Transfer of multimedia content and apps from a smartphone to the touchscreen in the vehicle, via which the compatible functions and apps can be operated directly - Mirror Link: Mirroring of the smartphone screen on the touchscreen (for compatible smartphone models with Android operating system) - CarPlay (for compatible iPhone models from Apple) - Android Auto and Mirror Link (for compatible smartphone models with Android operating system))
- paddle shifters on the steering wheel
- Side windows in the second row and rear window are more heavily tinted.
- Seats: 3 separate individual seats in row 2 (foldable, with longitudinal adjustment and backrest tilt adjustment)
- Seats: Passenger seat foldable
- Seats: Manual lumbar support for driver's seat (2-way)
- 12 Volt power outlet (3) (in the trunk, rows 1 and 2)
- Stop&Start system (automatic)
- Tie-down points in the trunk (4 pieces)
- Immobiliser

### Extra equipment

- Detachable towbar (with removable ball head without tools)
- luggage compartment partition net
- Paint finish: Special metallic paint
- tailgate sensor-controlled

- Upholstery: Fabric/faux leather "Belomka" in black with decorative stitching in copper
- Radio: RCC audio system (Bi-tuner - 6 speakers - MP3-compatible - Bluetooth hands-free system with audio streaming via Bluetooth - USB port - operation via steering wheel and touchscreen)
- Radio accessories: Digital radio reception DAB+
- Rain sensor
- Tire pressure monitoring system
- Wheels: 18" "Detroit" alloy wheels, two-tone with black (with 225/55 R 18 tires)
- Wheels: Tire repair kit (compressor + tire sealant spray)
- Reversing camera with 180° surround view
- Keyless start system
- Electric power steering
- Seats: 2 additional seats for the 3rd row (removable and fully retractable)
- Seats: Passenger seat height adjustable
- Seats: Driver's seat height adjustable
- Lane keeping assist with steering intervention
- Power outlet: Dual USB port (Type A) in row 2
- Traffic sign recognition (with display of the speed recommendation in the instrument cluster)
- Central locking system, activatable from inside via remote control (doors lock automatically when driving off)

- Seats: Ergonomic comfort seats with AGR seal of approval (electrically adjustable driver's seat with memory function - heated front seats - massage function for driver and front passenger seats - extendable thigh support on driver and front passenger sides - electric lumbar support on driver and front passenger sides - electric seat tilt adjustment on the front passenger side - exterior mirrors with projection of the PEUGEOT lion onto the ground)

### Brief expert findings

|                      |  |
|----------------------|--|
| Documents submitted  | At the time of the inspection, the vehicle registration certificate Part 2 (title) was available, but the vehicle registration certificate Part 1 (document) was not. (Copy) |
| VIN comparison       | The vehicle identification number (VIN) was read from the vehicle and its conformity with the submitted documents was confirmed by the undersigned during the inspection.    |
| Inspection           | The inspection conditions were sufficient for the assessment of the vehicle.<br>Lifting equipment and/or a pit were available for examining the vehicle.                     |
| Test drive           | No test drive/shunting maneuver was carried out during the inspection of the vehicle.  |
| Engine function test | An engine test run was performed.  |

### Value reducing factors

| No. | Component group        | Description  |
|-----|------------------------|--|
| 1   | Body                   | Underbody panelling (Schrauben fehlen) - Loose - Replace |
| 2   | Door - front left side | Door - Scratch(es) - Smart repair                        |
| 3   | 2nd wheel set          | 1 alloy rim - Scratch(es) - Loss in value                |
| 4   | Body                   | Body - Damage by hail - Smooth repair work               |



## Wear and tear

| No. | Component group              | Description                               |
|-----|------------------------------|---|
| 1   | Vehicle glazing              | Windscreen - Stone chips - No deduction   |
| 2   | Bonnet                       | Bonnet - Stone chips - No deduction       |
| 3   | Front bumper                 | Front bumper - Stone chips - No deduction |
| 4   | Side panel - rear right side | Side panel - dent(s) - No deduction       |

The vehicle shows signs of wear and tear commensurate with its age and use.

## Order/Scope of Order

An order was placed to prepare a sales report for the described vehicle. This report includes the following:

- Description of key vehicle information
- Documentation of equipment features  
(*Delivery by third-party service providers*)
- Documentation of damage, defects, missing parts
- Documentation of prior damage, unrepaired prior damage, repainting
- A brief visual or functional inspection of the equipment details, if possible.  
(*Functional testing of driver assistance systems is not included in the scope of services!*)
- a photographic documentation of the vehicle

## Basis for the order

This product is based on the guidelines for vehicle returns and valuations published by Alphabet Fleet GmbH. The expert makes the specific findings in each individual case objectively, within the framework of the prescribed standards, based on their own expertise.

The vehicle inspection takes place in a fully assembled, unassembled state.

Damage or defects that can only be detected during disassembly/diagnostic work or through further investigation remain within the realm of prognostic risk. An increased risk exists due to concealed defects caused by fraudulent misrepresentation and which were not identifiable by the expert.

Damage or defects resulting from normal use or wear and tear of the vehicle will be accepted in accordance with the applicable standard.

There was no explicit identification or monetary consideration of the expected features within the product.

Features which, in their nature and extent, slightly exceed normal use but do not constitute unacceptable damage, will be documented and indicated as signs of wear, if applicable.

Damage or defects that, according to the applicable standard, can no longer be attributed to normal use or wear and tear are listed under "Value Reducing Factors" in the product description.

Depending on the product specification, a monetary ID can be provided. If this takes place, the costs can be 100% d or pro rata depending on the vehicle's age and mileage.

## Previous damages

No apparent prior damage that had been repaired could be found on the vehicle.

## Comments

- Winterradsatz ist kein Bestandteil des Auslieferungsumfangs.



Figure 1: Diagonal front (left)



Figure 2: Diagonal front (right)



Figure 3: Diagonal rear (left)



Figure 4: Diagonal rear (right)



Figure 5: Interior - front



Figure 6: Interior - rear



Figure 7: Instrument cluster



Figure 8: Instrument panel



Figure 9: Interior 360° view



Figure 10: Cargo area

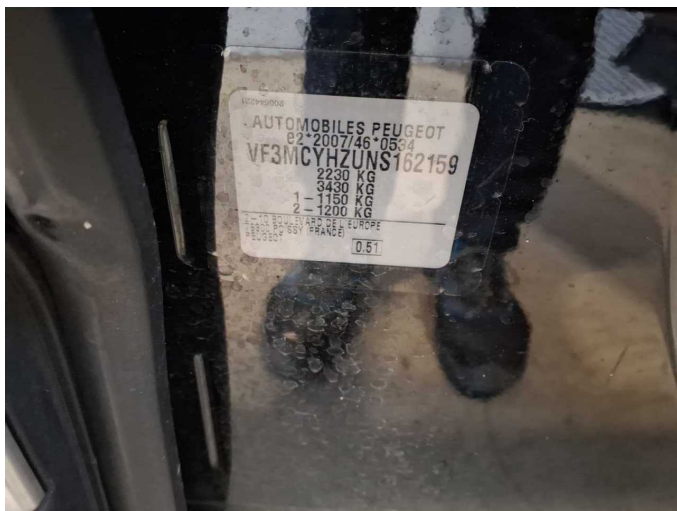


Figure 11: VIN



Figure 12: Mounted tyres



Figure 13: Documents



Figure 14: Additional tyres



Figure 15: Additional tyres



Figure 16: Navigation

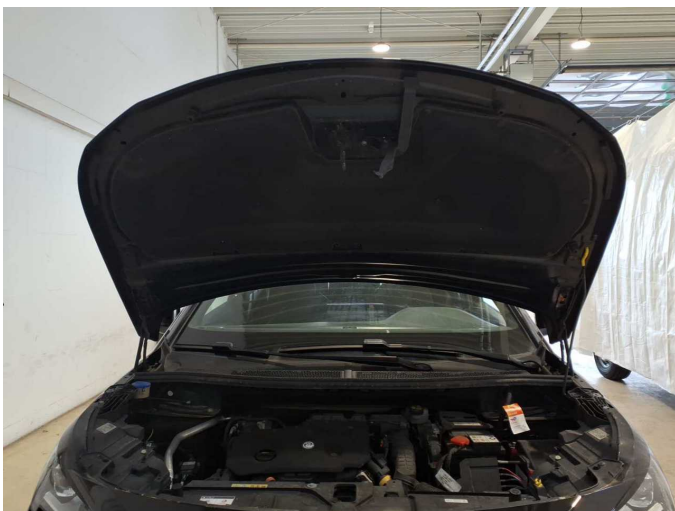


Figure 17: Misc.

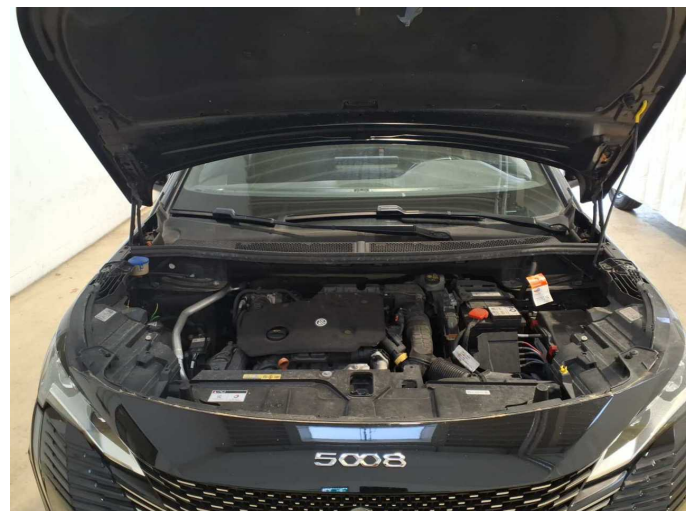


Figure 18: Misc.



Figure 19: Misc.



Figure 20: Misc.



Figure 21: Misc.



Figure 22: Misc.

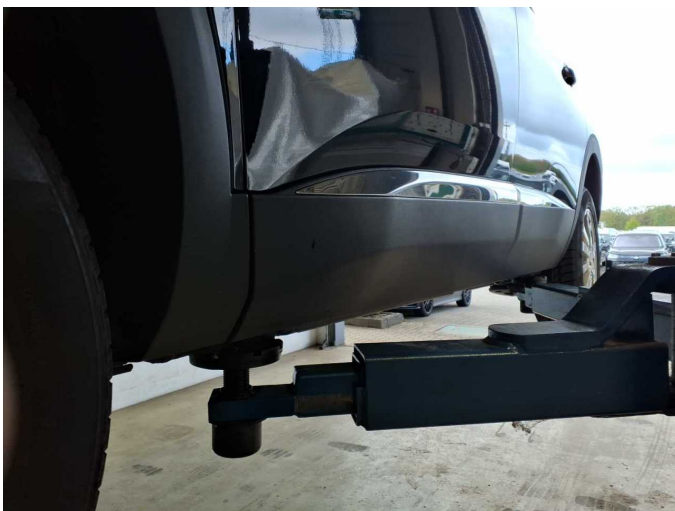


Figure 23: Misc.



Figure 24: Misc.



**Damage 1:** Body: Underbody panelling (Schrauben fehlen) - Loose - Replace



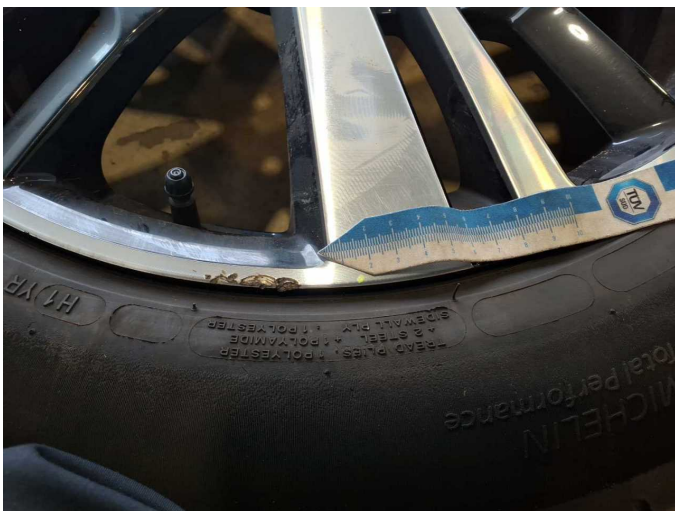
**Damage 1:** Body: Underbody panelling (Schrauben fehlen) - Loose - Replace



**Damage 2:** Door - front left side: Door - Scratch(es) - Smart repair



**Damage 2:** Door - front left side: Door - Scratch(es) - Smart repair



**Damage 3:** 2nd wheel set: 1 alloy rim - Scratch(es) - Loss in value



**Damage 3:** 2nd wheel set: 1 alloy rim - Scratch(es) - Loss in value



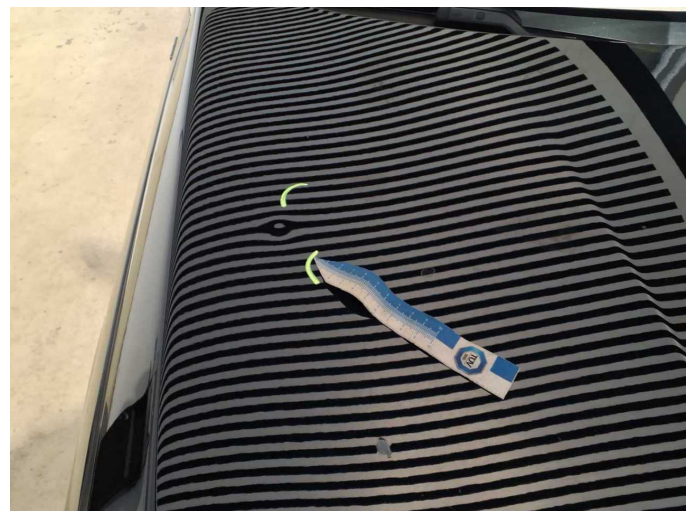
**Damage 4:** Body: Body - Damage by hail - Smooth repair work



**Damage 4:** Body: Body - Damage by hail - Smooth repair work



**Damage 4:** Body: Body - Damage by hail - Smooth repair work



**Damage 4:** Body: Body - Damage by hail - Smooth repair work



**Damage 4:** Body: Body - Damage by hail - Smooth repair work



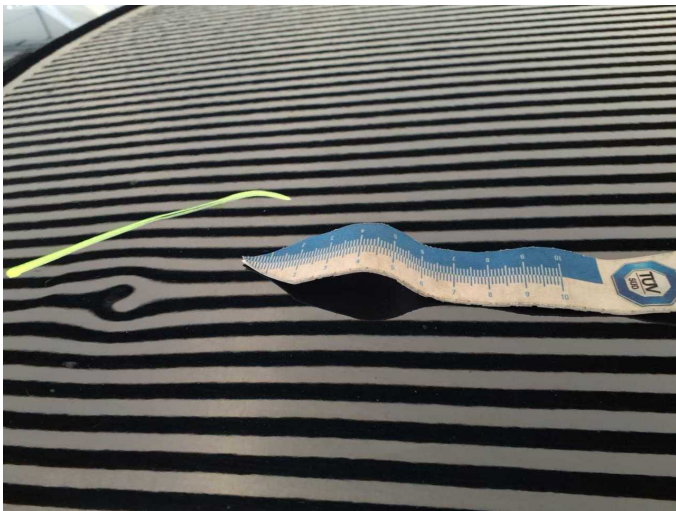
**Damage 4:** Body: Body - Damage by hail - Smooth repair work



Damage 4: Body: Body - Damage by hail - Smooth repair work



Damage 4: Body: Body - Damage by hail - Smooth repair work



Damage 4: Body: Body - Damage by hail - Smooth repair work



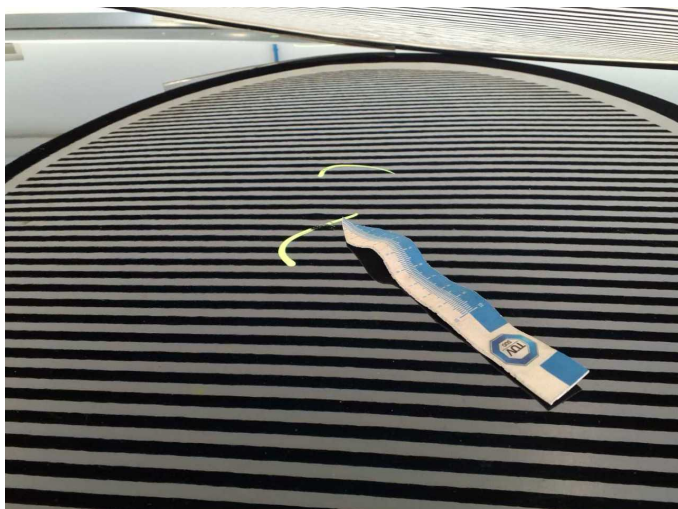
Damage 4: Body: Body - Damage by hail - Smooth repair work



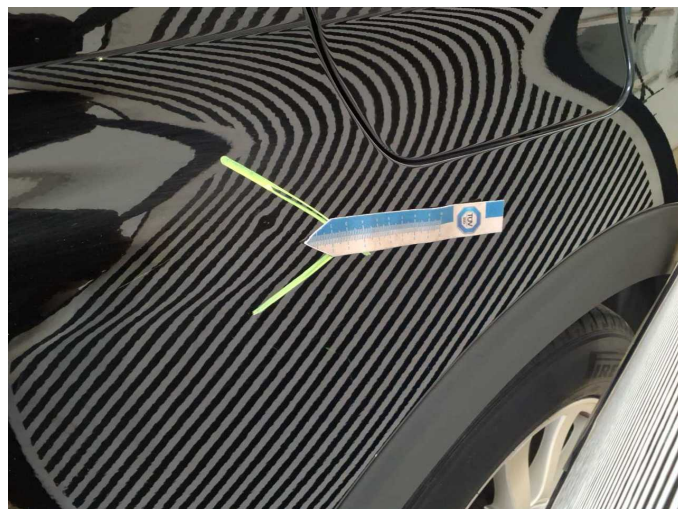
Damage 4: Body: Body - Damage by hail - Smooth repair work



Damage 4: Body: Body - Damage by hail - Smooth repair work



**Damage 4:** Body: Body - Damage by hail - Smooth repair work



**Wear and tear 4:** Side panel - rear right side: Side panel - dent(s) - No deduction



# Wartungshistorie

(gemäß Auftraggeber Informationen)

Fahrgestellnummer: VF3MCYHZUNS162159

Hersteller / Modell: PEUGEOT PEUGEOT 5008 BlueHDi 130 EAT8 GT

| Datum      | KM-Stand | Beschreibung   |
|------------|----------|--|
| 18.02.2026 | 65.565   | HU + AU; Kraftstofffilter ern; Luftfiltereinsatz ern; Motoröl b. Wartung; Ölfilter ern; Regelwartungsdienst; Wartung Sonstiges       |
| 02.06.2025 | 47.195   | Bremsflüssigkeit; Bremsflüssigkeit ern; Bremsklötze hinten; Motoröl b. Wartung; Ölfilter ern; Regelwartungsdienst; Wartung Sonstiges |
| 07.05.2024 | 22.238   | Motoröl b. Wartung; Ölfilter ern; Regelwartungsdienst; Wartung Sonstiges   |