

Expertise

Protocol number: 45078999
Order No. / Reference: 26140453
Inspection date: 21 Apr 2026

Manufacturer: Volvo

Model: V60 B4 D Geartronic Inscription

VIN: YV1ZWK5VDN2482415



Vehicle details

Manufacturer / Type / Model / Equipment

Volvo V60 B4 D Geartronic Inscription

Vehicle Identification number YV1ZWK5VDN2482415

Mileage (Read) 81,171 km

First registration 29 Mar 2022

Number of holders 1

Power / Engine displacement 145 kw / 1,969 ccm

Fuel type / Cylinder Hybrid Diesel / E / 4

Gearbox / Number of gears Automatic / 8

Type of drive Front drive

Type of vehicle Station wagon

Colour / colour code Bright Silber-Metallic

Doors / Seats 5 / 5

Upholstery type Leather

Colour of upholstery Black



Vehicle details

Maintenance booklet / proof	digital proof / complete	Next maintenance in	76 Tag(e)
Last service on / at	07/2025 at 69,159 km		
Key is / should be	2 / 2	FZG documents	ZB#2 (B) was available (copy), ZB#1 (S) was not available.
		Letter No.	GF838534
Previous damage / Accident	None detectable	Repainting	None detectable
Inspection conditions	sufficient	Lifting equipment / pit	yes
Test drive	Not performed	Engine function test	Performed
Manufacturer key number/ type code number	9101 / BTH 00009		
Emission standard	EURO6;WLTP;AP;PI/CI; M, N1 I	fine dust sticker	
Permitted total weight	2,280 kg	Empty weight	

Tyres

Mounted tyres

#	Tyre size	Type of tyre	Manufacturer	Tread depth
1)	225/50 R17 98H	Winter tyres on Light alloy	Continental	5mm / 5mm
2)	225/50 R17 98H	Winter tyres on Light alloy	Continental	7mm / 7mm

Additional tyres

#	Tyre size	Type of tyre	Manufacturer	Tread depth
1)	235/45 R18 98W	Summer tyres on Light alloy	Michelin	0mm / 0mm
2)	235/45 R18 98W	Summer tyres on Light alloy	Michelin	5mm / 5mm

Replacement

Typ	Tyre size	Type of tyre	Manufacturer	Tread depth
Tirefit		Expiration date 11/2025		

Legend: Tread depth information for the left tire is listed first, for the right tire it is listed second on the axle in the direction of travel.



Equipment

Standard equipment

- ABS - Anti-lock braking system (with EBD)
- Driver and front passenger airbags with two-stage deployment system (side airbags for driver and front passenger and head/shoulder airbags (IC) for all occupants)
- Electrically folding exterior mirrors
- Electrically adjustable exterior mirrors
- Outdoor temperature display
- Hill Start Assist (HSA)
- Condensation sensor (for automatic activation of the defroster function)
- third brake light
- CleanZone air quality system (with activated carbon filter, automatic recirculation and pre-ventilation of the interior when the vehicle is unlocked)
- Colored glazing
- Connected Safety (Cloud-based warning of slippery road conditions and vehicles with hazard warning lights activated)
- Drive Mode (driving mode settings for engine, transmission, steering, brakes: Comfort, Eco, Dynamic, Individual)
- Driver Alert - Attention Warning
- Rear parking assist
- Electronic Stability Control (ESC)
- Electric windows front and rear (with auto-down and auto-up function)
- Waterfall-design front grille in chrome
- Luggage compartment partition net
- Cruise control system with variable speed limit
- Front seat belt height adjustment
- Automatic tailgate (electric)
- Interior and exterior mirrors with automatic dimming
- Intelligent driver information system (delays incoming calls or vehicle information in dangerous situations)
- ISOFIX anchors for the outer rear seats
- Keyless Drive (electronic access system) (with sensor-controlled tailgate, illuminated door handles and puddle lights)
- Charging box under the cargo floor
- Cargo area roller blind
- Lane Keeping Aid (LKA) - Active lane keeping assistant
- Steering wheel adjustable for height and reach
- Steering wheel: Multifunction buttons on the steering wheel
- Illuminated makeup mirror for driver and front passenger
- Front center armrest with integrated storage compartment and cup holders
- Emergency brake lights (brake lights flash rapidly during heavy deceleration; hazard warning lights are automatically activated at speeds below 10 km/h)
- Front passenger airbag can be deactivated
- Ambient lighting (Extended interior lighting with: - Ambient lighting (multicoloured) front and rear - Exit lights front and rear - Work light on the tailgate - Illuminated door pockets and door openers front and rear - Rear footwell lighting - Rear reading lights)
- Heated exterior mirrors and rear window (automatic)
- Attachment system for carrier bags in the luggage compartment
- LED turn signals integrated into the exterior mirrors
- On-board computer with vehicle control functions
- City Safety (automatic emergency braking system with detection of vehicles, cyclists, pedestrians and large animals, including intersection braking assistant, emergency braking assistant for oncoming traffic and steering support during evasive maneuvers)
- Roof edge spoiler
- Aluminum roof rails (integrated)
- Digital instrumentation: 12.3" full-graphic display (31.2 cm diagonal, high resolution) (with two variable round instruments and information display (e.g. for navigation map view))
- Inserts: Drift Wood
- Aluminum door sill plates with Volvo lettering at the front
- Electronic differential lock
- Chrome window surround
- Automatic emergency braking (emergency braking mechanism after the deployment of the airbags or seatbelt pretensioners to prevent secondary accidents)
- Transmission: 8-speed Geartronic (automatic transmission)
- rear window wiper
- Interior lighting (headliner, front reading lights, front ambient lighting, front footwell, storage compartment behind center console, glove compartment and luggage compartment)
- Child safety lock (manual, rear doors)
- Headrests (5) front and rear, (rear ones manually foldable)
- Rear headrests foldable, electrically
- Stainless steel loading sill protector in the luggage compartment
- LED headlights "Thor's Hammer" (with high beam assist and integrated LED daytime running lights)
- Steering wheel heating
- Rear center armrest (foldable) with cup holders
- Sensus navigation system (3D navigation - destination input via natural voice control - dynamic route guidance with real-time traffic information - Local Search (surroundings search by keywords with information, ratings and photos) - Send-to-car (route planning via smartphone) - Volvo Lifetime MapCare (free map updates))
- Electric parking brake
- Parking ticket holder
- Particulate filter: Soot particle filter for diesel engines



- Oncoming Lane Mitigation ((Preventive protection system when crossing the center line and approaching oncoming traffic including active steering intervention towards one's own lane)
- Upholstery: Leather/imitation leather comfort seats (incl. rear center armrest - insert: Drift Wood (Cross Country))
- Radio accessories: Apple CarPlay and Android Auto (integration of Apple iPhones and Android smartphones into the Sensus operating system.)
- Radio accessories: Digital radio reception (DAB+)
- Radio accessories: Two USB-C ports on the back of the center console
- Road Edge Detection (system to protect against unintentional leaving of the roadway through steering and braking interventions)
- Wheels: 18" 10-spoke alloy wheels, diamond cut/graphite look (8 J x 18 with 235/45 R 18 W tires)
- Wheels: Tire pressure monitoring system (passive) (with tire-specific pressure loss warning)
- Gear lever made of Swedish crystal glass by Orrefors
- Safety braking system with disc brakes all around (internally ventilated) (automatic brake system pre-tensioning, brake assist and automatic hold function)
- Safety steering column (adaptive)
- Seats: Driver and front passenger seats height adjustable (electrically) (including manual tilt adjustment for the driver's seat)
- Seats: Lumbar support (4-way electrically adjustable) for driver and front passenger seats
- Front seat heating
- Power outlet (12-volt connection in the luggage compartment)
- Lashing eyes in the luggage compartment (foldable)
- Preparation for Trailer Stability Assist (TSA)
- Immobiliser
- WHIPS whiplash protection system (including immersion protection on all seats and energy-absorbing front seat cushions)
- Central locking with two remote controls and integrated emergency key (including automatic locking of the doors while driving (can be deactivated) - panic function (integrated in the remote control) - comfort opening/closing of the side windows and, if applicable, the sunroof via remote control)
- Radio: Sensus Connect infotainment system (9" touchscreen (22.9 cm diagonal) - 2 USB ports (compatible with Apple iPod/iPhone/iPad) - Bluetooth hands-free system incl. audio streaming - Digital vehicle owner's manual - Digital radio reception (DAB+) - Internet access incl. internet radio and apps (via paired smartphone) - Voice control
- Rain sensor
- Road Sign Information (RSI) (Traffic Sign Recognition)
- Run-off Road Protection (preventive protection system in case of unintentional leaving the road or impending rollovers including emergency call via Volvo On Call and door unlocking)
- Wheel accessories: Tire sealant (incl. 12-volt compressor - maximum speed 80 km/h)
- Speed-sensitive power steering
- Seat belts (active seat belts with belt tensioner - warning tone/indicator when seat belts are not fastened (for all seats))
- Seats: Adjustable leg rest for driver and passenger seat
- Seats: Driver's seat electrically adjustable (with memory function for driver's seat and exterior mirror settings (stored in the remote control))
- Seats: Rear seats in a 40/60 split or fully foldable with pass-through function
- Start/Stop technology
- Power outlet (12-volt connection at the front)
- Fuel filler neck with misfuelling protection
- Volvo On Call with WiFi hotspot (including integrated modem, external antenna, and WiFi hotspot for mobile devices). Volvo On Call features: Automatic emergency call function with transmission of vehicle position and data, and alerting the Volvo On Call Service Center at the touch of a button (10-year subscription). Additionally, various convenience services are available via the smartphone app, such as Send-to-Car, trip log, and locking/unlocking the vehicle (3-year subscription, extendable upon request; includes extension of the emergency call function).

Extra equipment

- Enhanced air quality system with fine dust filtration according to air quality standard PM2.5
- Automatic climate control with 4-zone temperature control (individual climate control for driver, front passenger and rear passengers left and right including climate display for the rear)
- Package: Parking Assistance Package (front and rear parking aid - reversing camera)
- Fire extinguisher
- Windscreen, heater
- Paint finish: Metallic paint



- Park Assist Pilot (Intelligent Parking Assistant) (including front and rear parking aid, parking assistant for parallel and perpendicular parking spaces (left and right) as well as exiting parallel parking spaces. Steering is controlled by the assistant, acceleration and braking are controlled by the driver. The parking space must be at least 1.2 times the length of the vehicle.)
- Radio: Audio system High Performance Sound Pro by Harman/Kardon (600 watts of power - 14 speakers - Fresh Air Subwoofer - Dirac Unison sound optimization)
- Glazing: Acoustic glazing for the side windows (UV and burglar-resistant laminated glass panes)
- Package: Lighting Package (LED fog lights - headlight cleaning system - full LED headlights "Thor's Hammer" Active High Beam with extended high beam, dynamic cornering lights, intelligent high beam assist with adaptive headlight range control and integrated LED daytime running lights - ambient lighting, extended interior lighting: multi-colored ambient lighting front/rear, exit lights front/rear, illuminated door pockets and door handles front/rear, illuminated cup holders front, footwell lighting rear, reading lights rear, work light on the tailgate.)
- Parking camera with 360° surround view
- Pilot Assist (Adaptive cruise control with distance warning - Lane keeping assist up to 130 km/h - Curve Speed Assist (CSA) - Adjustment of vehicle speed before curves based on map data)

Brief expert findings

Documents submitted	At the time of the inspection, the vehicle registration certificate Part 2 (title) was available, but the vehicle registration certificate Part 1 (document) was not. (Copy)
VIN comparison	The vehicle identification number (VIN) was read from the vehicle and its conformity with the submitted documents was confirmed by the undersigned during the inspection.
Inspection	The inspection conditions were sufficient for the assessment of the vehicle. Lifting equipment and/or a pit were available for examining the vehicle.
Test drive	No test drive/shunting maneuver was carried out during the inspection of the vehicle.
Engine function test	An engine test run was performed.

Value reducing factors

No.	Component group	Description
1	Boot lid / rear door	Reflectors (Reflektor Stossfänger) - Scratch(es) - Replace
2	Equipment	Tirefit filler - Expired - Replace
3	Door - front right side	Door handle - outside - Scratch(es) - Smart repair
4	Door - rear left side	Door - Dent / paintcoat damage - Smart repair
5	Front bumper	Front bumper - Scratch(es) - Smart repair
6	Door - front right side	Door - Scratch(es) - Smart repair
7	2nd wheel set	1 tyre - Broken / torn - Replace
8	2nd wheel set	2 tyres - Worn - Replace
9	Door - rear left side	Door seal - Broken / torn - Replace
10	Door - rear right side	Door - Scratch(es) - Paint
11	Mudguard - right side	Mudguard - right side - Dent / paintcoat damage - Repair and paint
12	Rear bumper	Rear bumper - Dent / paintcoat damage - Repair and paint

Wear and tear

No.	Component group	Description
1	Steering system	Steering wheel - Scratch(es) - No deduction
2	Seat - front	Seat cover - left side - Scratch(es) - No deduction
3	2nd wheel set	1 alloy rim - Scratch(es) - No deduction
4	Rear bumper	Spoiler - Scratch(es) - No deduction

The vehicle shows signs of wear and tear commensurate with its age and use.



Missing parts

Description

Equipment - Fire extinguisher

Order/Scope of Order

An order was placed to prepare a sales report for the described vehicle. This report includes the following:

- Description of key vehicle information
- Documentation of equipment features
(Delivery by third-party service providers)
- Documentation of damage, defects, missing parts
- Documentation of prior damage, unrepaired prior damage, repainting
- A brief visual or functional inspection of the equipment details, if possible.
(Functional testing of driver assistance systems is not included in the scope of services!)
- a photographic documentation of the vehicle

Basis for the order

This product is based on the guidelines for vehicle returns and valuations published by Alphabet Fleet GmbH. The expert makes the specific findings in each individual case objectively, within the framework of the prescribed standards, based on their own expertise.

The vehicle inspection takes place in a fully assembled, unassembled state.

Damage or defects that can only be detected during disassembly/diagnostic work or through further investigation remain within the realm of prognostic risk. An increased risk exists due to concealed defects caused by fraudulent misrepresentation and which were not identifiable by the expert.

Damage or defects resulting from normal use or wear and tear of the vehicle will be accepted in accordance with the applicable standard.

There was no explicit identification or monetary consideration of the expected features within the product.

Features which, in their nature and extent, slightly exceed normal use but do not constitute unacceptable damage, will be documented and indicated as signs of wear, if applicable.

Damage or defects that, according to the applicable standard, can no longer be attributed to normal use or wear and tear are listed under "Value Reducing Factors" in the product description.

Depending on the product specification, a monetary ID can be provided. If this takes place, the costs can be 100% or pro rata depending on the vehicle's age and mileage.

Previous damages

No apparent prior damage that had been repaired could be found on the vehicle.

Comments

-Der montierte Winterradsatz ist kein Bestandteil des Auslieferungsumfangs.



Figure 1: Diagonal front (left)



Figure 2: Diagonal front (right)



Figure 3: Diagonal rear (left)



Figure 4: Diagonal rear (right)



Figure 5: Interior - front



Figure 6: Interior - rear

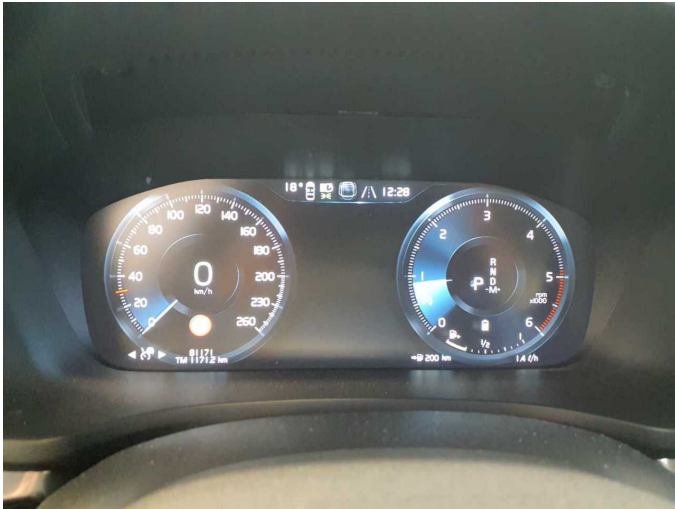


Figure 7: Instrument cluster



Figure 8: Instrument panel



Figure 9: Interior 360° view



Figure 10: Cargo area



Figure 11: VIN



Figure 12: Mounted tyres

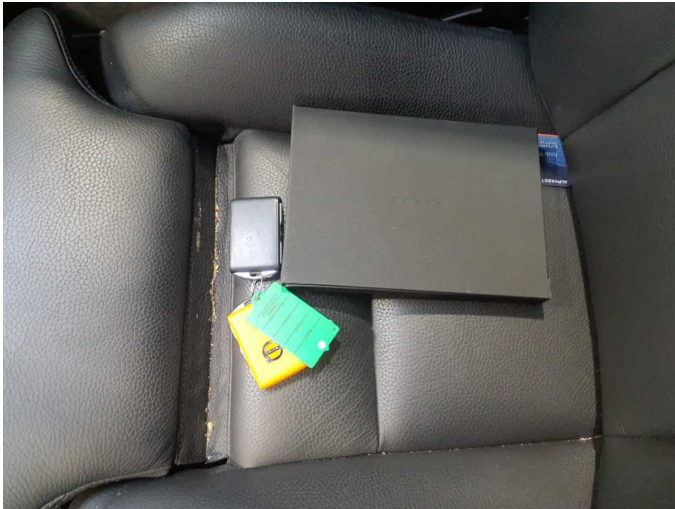


Figure 13: Documents



Figure 14: Additional tyres



Figure 15: Additional tyres

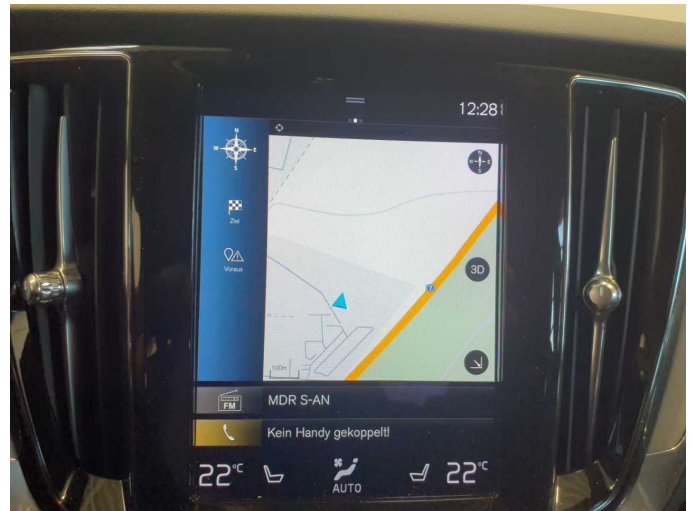


Figure 16: Navigation



Figure 17: Misc.



Figure 18: Misc.



Figure 19: Misc.



Figure 20: Misc.



Figure 21: Misc.

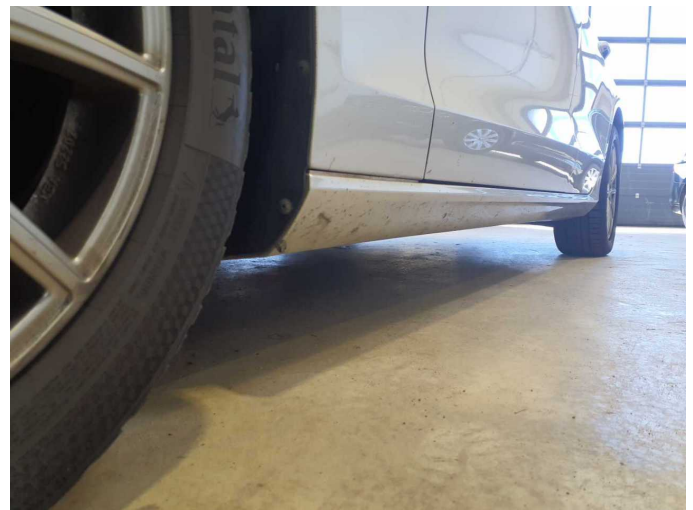


Figure 22: Misc.



Figure 23: Misc.



Figure 24: Misc.



Figure 25: Misc.



Figure 26: Misc.



Figure 27: Misc.



Figure 28: Misc.

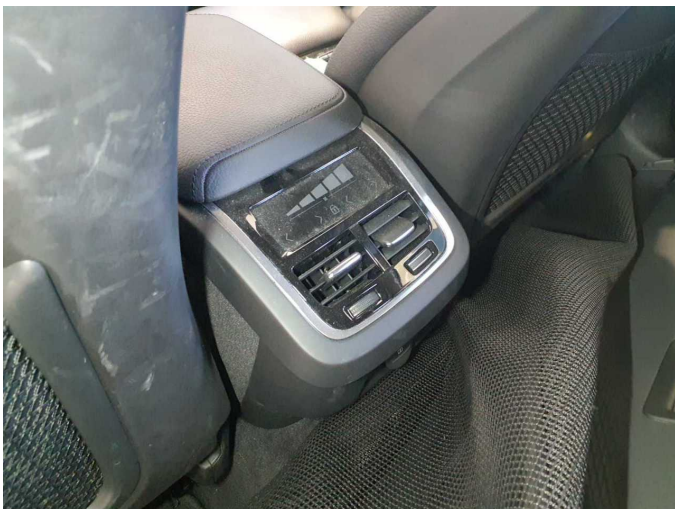


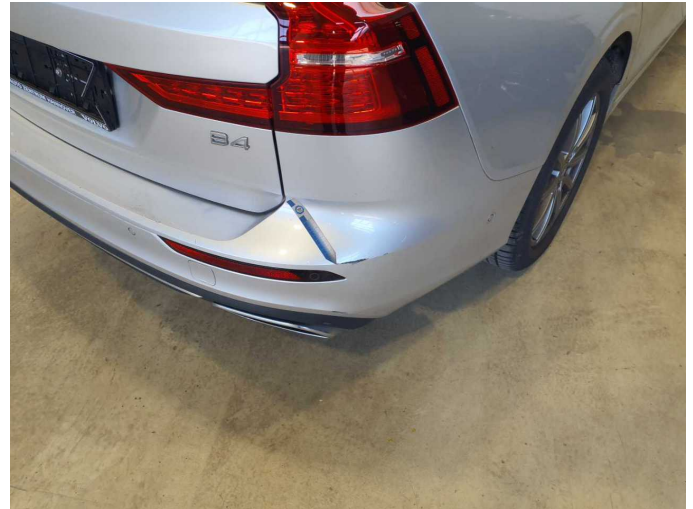
Figure 29: Misc.



Figure 30: Misc.



Figure 31: Misc.



Damage 1: Boot lid / rear door: Reflectors (Reflektor Stossfänger) - Scratch(es) - Replace



Damage 1: Boot lid / rear door: Reflectors (Reflektor Stossfänger) - Scratch(es) - Replace



Damage 2: Equipment: Tirefit filler - Expired - Replace



Damage 3: Door - front right side: Door handle - outside - Scratch(es) - Smart repair



Damage 3: Door - front right side: Door handle - outside - Scratch(es) - Smart repair



Damage 4: Door - rear left side: Door - Dent / paintcoat damage - Smart repair



Damage 4: Door - rear left side: Door - Dent / paintcoat damage - Smart repair



Damage 4: Door - rear left side: Door - Dent / paintcoat damage - Smart repair



Damage 5: Front bumper: Front bumper - Scratch(es) - Smart repair



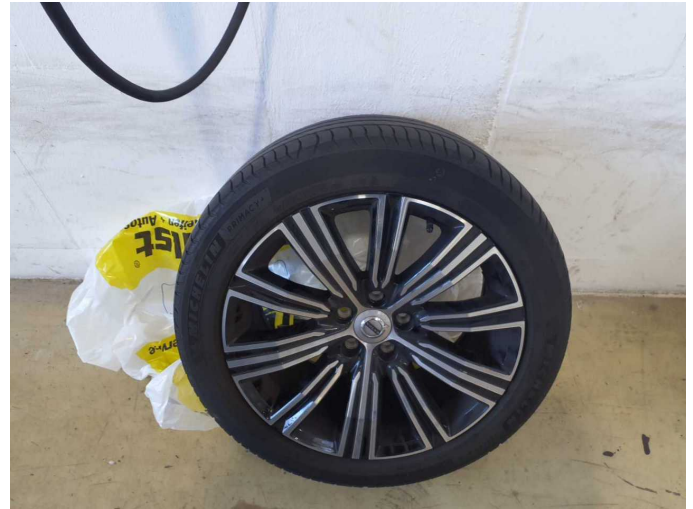
Damage 5: Front bumper: Front bumper - Scratch(es) - Smart repair



Damage 6: Door - front right side: Door - Scratch(es) - Smart repair



Damage 6: Door - front right side: Door - Scratch(es) - Smart repair



Damage 7: 2nd wheel set: 1 tyre - Broken / torn - Replace



Damage 7: 2nd wheel set: 1 tyre - Broken / torn - Replace



Damage 8: 2nd wheel set: 2 tyres - Worn - Replace



Damage 8: 2nd wheel set: 2 tyres - Worn - Replace



Damage 8: 2nd wheel set: 2 tyres - Worn - Replace



Damage 8: 2nd wheel set: 2 tyres - Worn - Replace



Damage 9: Door - rear left side: Door seal - Broken / torn - Replace



Damage 9: Door - rear left side: Door seal - Broken / torn - Replace



Damage 10: Door - rear right side: Door - Scratch(es) - Paint



Damage 10: Door - rear right side: Door - Scratch(es) - Paint



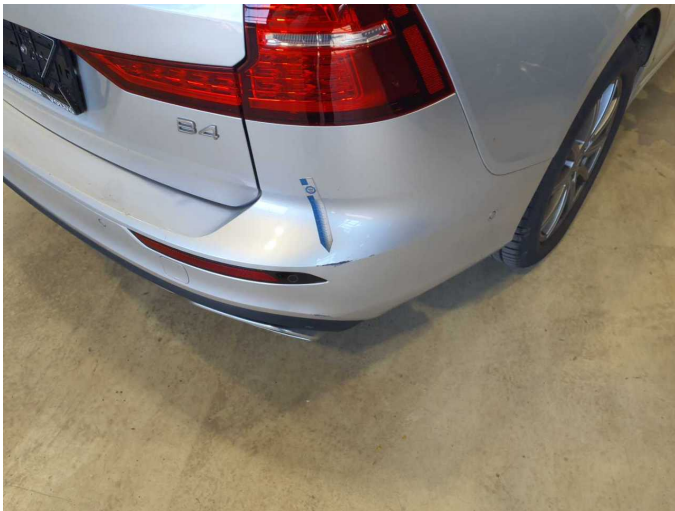
Damage 11: Mudguard - right side: Mudguard - right side - Dent / paintcoat damage - Repair and paint



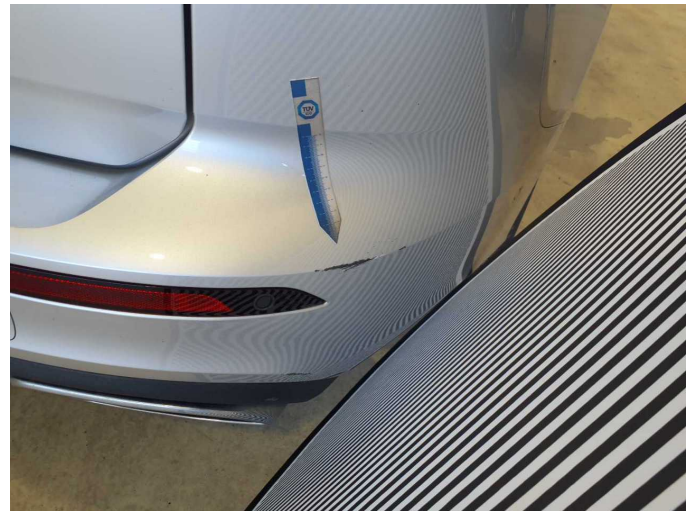
Damage 11: Mudguard - right side: Mudguard - right side - Dent / paintcoat damage - Repair and paint



Damage 11: Mudguard - right side: Mudguard - right side - Dent / paintcoat damage - Repair and paint



Damage 12: Rear bumper: Rear bumper - Dent / paintcoat damage - Repair and paint



Damage 12: Rear bumper: Rear bumper - Dent / paintcoat damage - Repair and paint



Damage 12: Rear bumper: Rear bumper - Dent / paintcoat damage - Repair and paint



Wear and tear 4: Rear bumper: Spoiler - Scratch(es) - No deduction



Wear and tear 4: Rear bumper: Spoiler - Scratch(es) - No deduction



Wartungshistorie

(gemäß Auftraggeber Informationen)

Fahrgestellnummer: YV1ZWK5VDN2482415

Hersteller / Modell: VOLVO VOLVO V60 B4 D Geartronic Inscription

Datum	KM-Stand	Beschreibung
10.07.2025	69.159	Motoröl b. Wartung; Ölfilter ern; Regelwartungsdienst; Wartung Sonstiges
18.06.2024	43.943	Bremsflüssigkeit; Bremsflüssigkeit ern; Bremsklötze vorne; Bremsscheiben + Klötze v; Bremsscheiben vorne; Kraftstofffilter ern; Luftfiltereinsatz ern; Motoröl b. Wartung; Ölfilter ern; Regelwartungsdienst; Reparatur Sonstiges; Systemtest/Eigendiagnose; Wartung Sonstiges
17.05.2023	18.392	Motoröl b. Wartung; Ölfilter ern; Regelwartungsdienst; Wartung Sonstiges