

Expertise

Protocol number: 46251092
Order No. / Reference: 26594245
Inspection date: 29 Jun 2026

Manufacturer: Volkswagen

Model: ID.4 Performance Upgrade Pro Business

VIN: WVGZZZE2ZMP035166



Vehicle details

Manufacturer / Type / Model / Equipment

Volkswagen ID.4 Performance Upgrade Pro Business

Vehicle Identification number WVGZZZE2ZMP035166

Mileage (Read) 106,663 km

First registration 28 May 2021

Number of holders 1

Power / Engine displacement 150 kw /

Fuel type / Cylinder Electric / 0

Gearbox / Number of gears Direct drive / 1

Type of drive Front drive

Type of vehicle Station wagon

Colour / colour code Grey University

Doors / Seats 5 / 5

Upholstery type Cloth / leather combination

Colour of upholstery Brown-Anthracite



Vehicle details			
Maintenance booklet / proof	Non-existent	Next maintenance in	121 Tag(e)
Last service on / at	05/2025 at 89,368 km		
Key is / should be	2 / 2	FZG documents	ZB#2 (B) was available (copy), ZB#1 (S) was not available.
		Letter No.	GC307873
Previous damage / Accident	Detectable	Repainting	Detectable
Inspection conditions	Conditional: Light/moisture/dirt	Lifting equipment / pit	No
Test drive	Not performed	Engine function test	Performed
Manufacturer key number/ type code number	0603 / CLO 00005		
Emission standard	2017/1151;WLTP;reine Elektrofz	fine dust sticker	
Permitted total weight	2,660 kg	Empty weight	

Tyres

Mounted tyres				
#	Tyre size	Type of tyre	Manufacturer	Tread depth
1)	235/55 R19 101T	Summer tyres on Steel rim with wheel cover	Pirelli	6mm / 6mm
2)	255/50 R19 103T	Summer tyres on Steel rim with wheel cover	Pirelli	6mm / 6mm
Additional tyres				
#	Tyre size	Type of tyre	Manufacturer	Tread depth
1)	235/55 R19 101T	Winter tires (with run-flat tires) on Steel rim with wheel cover	Pirelli	5mm / 5mm
2)	255/50 R19 103T	Winter tires (with run-flat tires) on Steel rim with wheel cover	Pirelli	7mm / 7mm
Replacement				
Typ	Tyre size	Type of tyre	Manufacturer	Tread depth
	Tirefit	Expiration date 02/2029		

Legend: Tread depth information for the left tire is listed first, for the right tire it is listed second on the axle in the direction of travel.



Equipment

Standard equipment

- 2 USB-C charging ports on the rear center console
- Airbag for driver and front passenger, with front passenger airbag deactivation
- App-Connect Wireless for Apple CarPlay and Android Auto
- third brake light
- Car2X
- black roof rails
- Adaptive cruise control (ACC) "stop & go", with speed limiter
- Parking aid (warning signals for obstacles in the front and rear area)
- Driving profile selection (possibility to set different vehicle settings: Comfort (only in conjunction with Adaptive Chassis Control DCC), Normal, Sport, Eco, Individual - adjustable vehicle systems are: engine, Adaptive Chassis Control DCC, DSG, steering, start-stop system, cornering lights and "Dynamic Light Assist", Adaptive Cruise Control ACC, air conditioning)
- ISOFIX mounting points for child seats (mounting points for child seats on the outer rear seats and on the front passenger seat, i-Size compatible)
- Front and rear headrests (5)
- Mode 3 Type 2 charging cable, 16 A
- Charging: 125 kW DC charging power (direct current)
- Steering wheel: Multifunction leather steering wheel, heated, with touch controls
- Makeup mirrors in the sun visors
- Fatigue detection
- Navigation system "Discover Pro"
- eCall emergency call system
- Stainless steel pedals in a "Play/Pause" design
- Proactive occupant protection system in conjunction with "Front Assist"
- Radio accessories: 6 + 1 speakers
- Rain sensor
- Wheels: Steel wheels (4) 8 J x 19 (tires 235/55 R 19 front, tires 255/50 R 19 rear - wheel covers)
- LED taillights
- Front windshield washer nozzles automatically heated
- Electromechanical power steering (speed-dependent control)
- Seats: Armrest for front seats
- Seats: Rear seat backrest asymmetrically split and foldable, with pass-through and center armrest (with 2 cup holders)
- Voice control
- "Comfort" telephone interface with inductive charging function
- Glazing: Rear side windows and rear window tinted
- Electronic immobilizer
- 2 USB-C ports on the front
- Airbag: Front head and side airbags, with center airbag
- 30-color ambient lighting
- Electrically adjustable, folding and heated exterior mirrors (driver's side exterior mirror aspherical, passenger's side convex)
- Anti-theft alarm system (with interior monitoring, backup horn and tow-away protection)
- e-Sound (artificially generated engine noise to inform other road users about the approach of the e-vehicle)
- ESP Electronic Stability Program (incl. ABS Anti-lock Braking System)
- Front windshield made of laminated safety glass, wirelessly heated and infrared-reflecting, noise-reducing
- Transmission: 1-speed automatic
- Back window, heater
- rear window wiper
- Interior mirror automatically dimming
- Air conditioning system "Air Care Climatronic" with 2-zone temperature control (active combination filter - stationary air conditioning)
- Paint finish: Solid
- Charging: 11 kW AC charging power (alternating current)
- LED matrix headlights with automatic headlight control, bad weather lights, and welcome radio. (Dynamic Light Assist high beam control for LED matrix headlights)
- Variable center console (with interchangeable inserts for cup holders and storage compartments)
- Emergency braking assistant "Front Assist" with pedestrian and cyclist detection
- Upholstery: Center panels of the front seats and outer rear seats in "ArtVelours"
- Radio "Ready 2 Discover" (Digital radio reception DAB+ - Diversity antenna for FM reception)
- Tire pressure monitoring system
- Rear View camera (camera image displayed on the radio or navigation system screen shows the area behind the vehicle)
- Keyless locking and starting system "Keyless Access" with safe locking mechanism
- Seat belts: Three-point automatic seat belts at the front with height adjustment and belt tensioner (3 three-point automatic seat belts at the rear - warning tone and light for unfastened seat belts at the front and rear)
- Seats: Heated front seats
- Lane keeping assistant "Lane Assist"
- Ambient lighting with logo projection
- First aid kit, warning triangle and high-visibility vest
- Traffic sign recognition



Extra equipment

- Foldable towbar (electric release)
- Wheels: Winter wheels (4) (additional), steel (4 steel winter wheels 8 J x 19 - AirStop winter tires 235/55 R 19 T front, 255/50 R 19 T rear)
- Charging cable: Mains charging cable for household socket
- Heat pump for range optimization

Brief expert findings

Documents submitted	At the time of the inspection, the vehicle registration certificate Part 2 (title) was available, but the vehicle registration certificate Part 1 (document) was not. (Copy)
VIN comparison	The vehicle identification number (VIN) was read from the vehicle and its conformity with the submitted documents was confirmed by the undersigned during the inspection.
Inspection	A proper visual inspection of the paintwork and bodywork was only possible to a limited extent due to insufficient lighting conditions/dampness or dirt. No lifting equipment or pit was available for inspecting the vehicle. Therefore, inspection of the vehicle's underside was only possible to a limited extent.
Test drive	No test drive/shunting maneuver was carried out during the inspection of the vehicle.
Engine function test	An engine test run was performed.

Wear and tear

No.	Component group	Description
1	Vehicle glazing	Windscreen - Stone chips - No deduction
2	Bonnet	Bonnet - Stone chips - No deduction
3	Front bumper	Front bumper - Stone chips - No deduction
4	Roof	Roof - dent(s) - No deduction
5	Rear bumper	Rear bumper - Scratch(es) - No deduction

The vehicle shows signs of wear and tear commensurate with its age and use.

Previous damages

No.	Previous damage	Extent of damage (Net)
1	Side right, Provided by user / customer, from 16 Sept 2022	1.759,04 €
2	Rear, Provided by user / customer, from 6 Oct 2025	2.608,05 €

Paint coat thickness measurement

Mudguard - right side	202 µm	Bonnet	290 µm
-----------------------	--------	--------	--------

Order/Scope of Order

An order was placed to prepare a sales report for the described vehicle. This report includes the following:

- Description of key vehicle information
- Documentation of equipment features
(Delivery by third-party service providers)
- Documentation of damage, defects, missing parts
- Documentation of prior damage, unrepaired prior damage, repainting
- A brief visual or functional inspection of the equipment details, if possible.
(Functional testing of driver assistance systems is not included in the scope of services!)
- a photographic documentation of the vehicle



Basis for the order

This product is based on the guidelines for vehicle returns and valuations published by Alphabet Fleet GmbH. The expert makes the specific findings in each individual case objectively, within the framework of the prescribed standards, based on their own expertise.

The vehicle inspection takes place in a fully assembled, unassembled state.

Damage or defects that can only be detected during disassembly/diagnostic work or through further investigation remain within the realm of prognostic risk. An increased risk exists due to concealed defects caused by fraudulent misrepresentation and which were not identifiable by the expert.

Damage or defects resulting from normal use or wear and tear of the vehicle will be accepted in accordance with the applicable standard.

There was no explicit identification or monetary consideration of the expected features within the product.

Features which, in their nature and extent, slightly exceed normal use but do not constitute unacceptable damage, will be documented and indicated as signs of wear, if applicable.

Damage or defects that, according to the applicable standard, can no longer be attributed to normal use or wear and tear are listed under "Value Reducing Factors" in the product description.

Depending on the product specification, a monetary ID can be provided. If this takes place, the costs can be 100% d or pro rata depending on the vehicle's age and mileage.

Previous damages

According to available information previous damages were repaired at the vehicle. Traces of repairs, which allow conclusions about the area of repair, were not recognizable during the inspection.



Figure 1: Diagonal front (left)



Figure 2: Diagonal front (right)



Figure 3: Diagonal rear (left)



Figure 4: Diagonal rear (right)



Figure 5: Interior - front



Figure 6: Interior - rear



Figure 7: Instrument cluster



Figure 8: Instrument panel



Figure 9: Interior 360° view



Figure 10: Cargo area

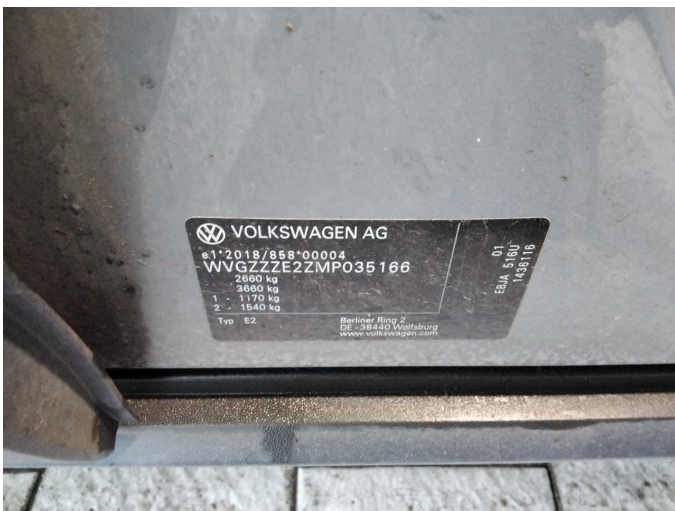


Figure 11: VIN



Figure 12: Mounted tyres

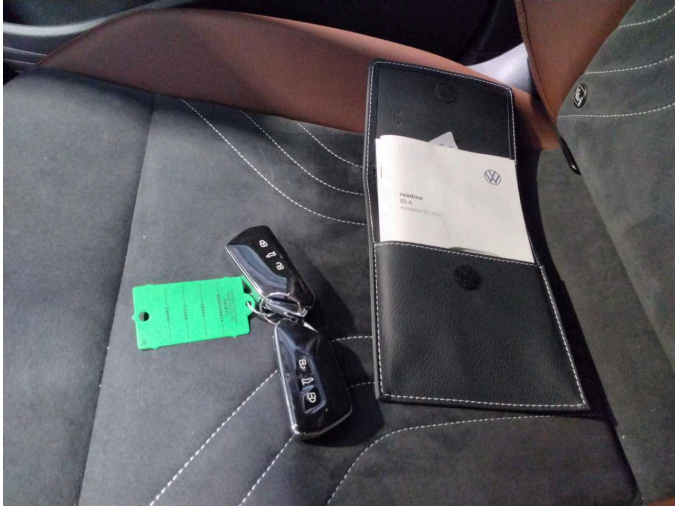


Figure 13: Documents



Figure 14: Additional tyres



Figure 15: Additional tyres



Figure 16: Navigation



Figure 17: Misc.



Figure 18: Misc.



Figure 19: Misc.



Figure 20: Misc.



Figure 21: Misc.

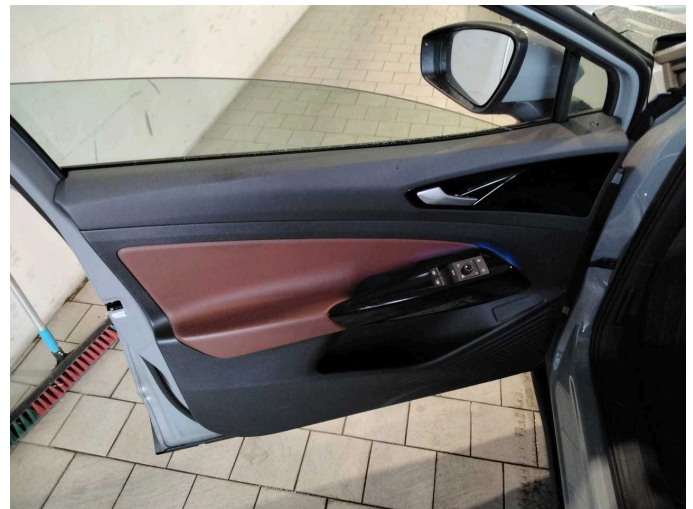


Figure 22: Misc.

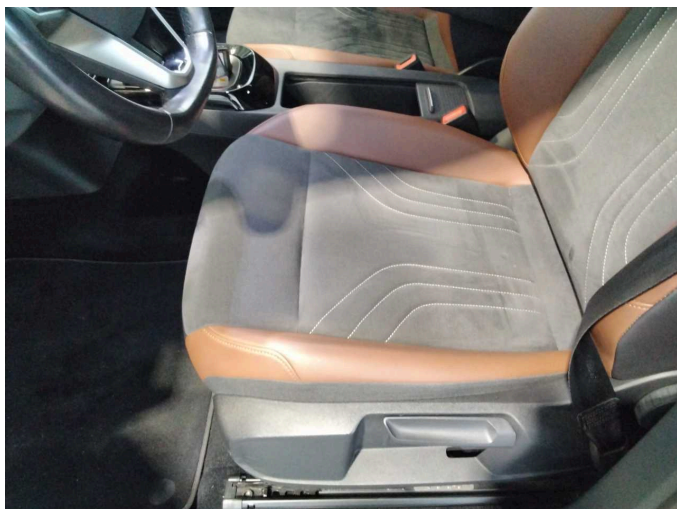


Figure 23: Misc.



Figure 24: Misc.



Figure 25: Misc.

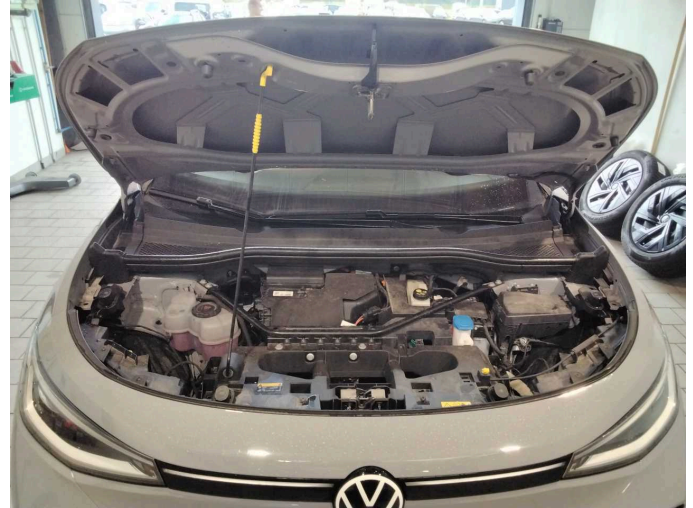


Figure 26: Misc.



Figure 27: Misc.

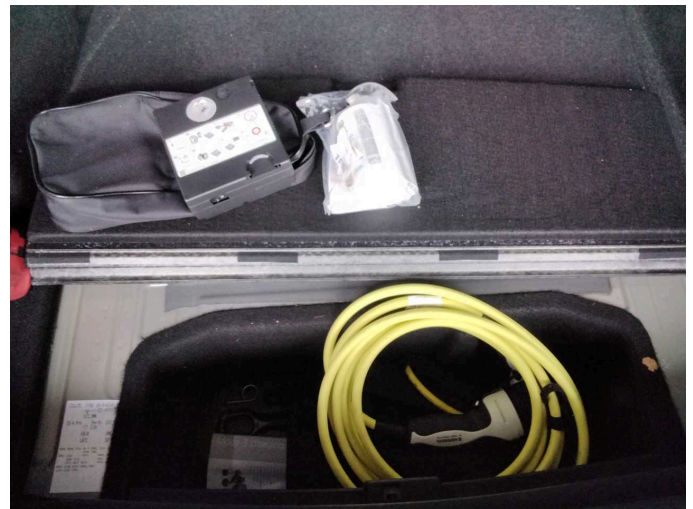
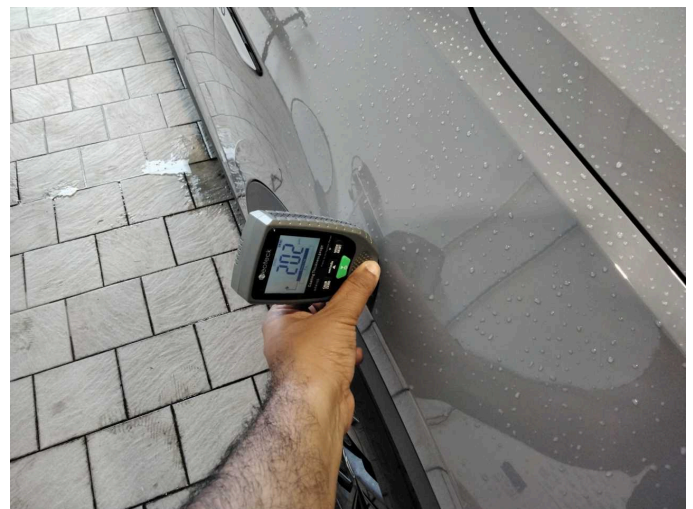


Figure 28: Misc.



Wear and tear 4: Roof: Roof - dent(s) - No deduction



Mudguard - right side: 202 µm



Mudguard - right side: 202 µm



Bonnet: 290 µm



Bonnet: 290 µm