

Expertise

Protocol number: 46363447
Order No. / Reference: 26311247
Inspection date: 2 Jul 2026

Manufacturer: Ford

Model: Focus Turnier 1.0 EcoBoost Hybrid TITANIUM EDITION

VIN: WF0PXXGCHPSJ80632



Vehicle details

Manufacturer / Type / Model / Equipment

Ford Focus Turnier 1.0 EcoBoost Hybrid TITANIUM EDITION

Vehicle Identification number WF0PXXGCHPSJ80632

Mileage (Read) 11,080 km

First registration 19 Mar 2025

Number of holders 1

Power / Engine displacement 92 kw / 999 ccm

Fuel type / Cylinder Hybrid Petrol / E / 3

Gearbox / Number of gears Manual / 6

Type of drive Front drive

Type of vehicle Station wagon

Colour / colour code Agate Black Metallic

Doors / Seats 5 / 5

Upholstery type Cloth

Colour of upholstery Anthracite-Black



Vehicle details

Maintenance booklet / proof	Available / complete	Next maintenance in	39 %
Key is / should be	2 / 2	FZG documents	ZB#2 (B) was available (copy), ZB#1 (S) was not available.
		Letter No.	HH808865
Previous damage / Accident	None detectable	Repainting	None detectable
Inspection conditions	sufficient	Lifting equipment / pit	yes
Test drive	Not performed	Engine function test	Performed
Manufacturer key number/ type code number	8566 / BUC 00155		
Emission standard	EURO6;WLTP;EA;PI/CI;M, N1, N2	fine dust sticker	
Permitted total weight	1,970 kg	Empty weight	

Tyres

Mounted tyres

#	Tyre size	Type of tyre	Manufacturer	Tread depth
1)	205/60 R16 96V	All-season tyres on Steel rim with wheel cover	Goodyear	7mm / 7mm
2)	205/60 R16 96V	All-season tyres on Steel rim with wheel cover	Goodyear	7mm / 7mm

Replacement

Typ	Tyre size	Type of tyre	Manufacturer	Tread depth
	Tirefit	Expiration date 12/2028		

Legend: Tread depth information for the left tire is listed first, for the right tire it is listed second on the axle in the direction of travel.



Equipment

Standard equipment

- Airbag: Passenger airbag deactivation
- Exterior mirrors painted in body color, electrically adjustable, heated and foldable
- Hill start assist
- Roof rails, aluminum
- Tachometer
- eCall
- Driver information system with on-board computer, color (10.7 cm screen diagonal)
- Electric parking brake with auto-hold function
- Ford ECO-Coach
- FordPass Connect including live traffic information
- Luggage compartment cover
- Cruise control
- Rubber mats
- Back window, heater
- Interior lighting with LED technology
- Intelligent security system
- Air conditioning with automatic temperature control
- Paint finish: Metallic
- LED headlights
- Steering wheel: 3-spoke design
- Make-up mirrors in driver and passenger sun visors
- MyKey key system (individually programmable second key)
- Navigation: Ford SYNC 4 including Ford navigation system with AppLink, 13.2" touchscreen and DAB/DAB+
- Front and rear parking pilot system
- Post-Collision Assist
- Tire repair kit
- Rear view camera
- Windscreen wipers with rain sensor (sensitivity adjustable)
- Selective driving mode switch
- Seats: Passenger seat, 2-way adjustable
- Seats: Rear seat backrest
- Seats: Front seats can be heated individually and variably.
- 12-volt socket
- Black trim above the side window
- Warning system for unfastened seat belts for the 1st and 2nd rows of seats
- Anti-lock braking system (ABS) with electronic brake force distribution (EBD)
- Tires: 6.5 J x 16 design wheels (4) with 205/60 R16 tires
- Fabric headliner
- Roof spoiler painted in car color
- Third brake light
- Electronic Safety and Stability Program (ESP)
- Lane keeping assist including lane keeping assist
- Electric windows front and rear
- Ford Easy Fuel
- Ford Power Start function
- Heated windshield
- Speed limiter
- Transmission: 6-speed manual transmission
- Illuminated glove compartment
- Rear window wiper
- Interior mirror, automatically dimming
- Isofix bracket
- Headrests: 2 front and 3 rear, height adjustable
- LED taillights
- Heated steering wheel
- Adjustable steering column
- Center console "Premium" front
- Fatigue warning
- Otto particulate filter
- Package: Winter
- Upholstery: Cloth
- Pre-Collision Assist
- Tire Pressure Monitoring System (TPMS)
- Gear knob, Sensico in leather look
- Headlight assistant with day/night sensor
- Electromechanical speed-dependent power steering
- Seats: Driver's seat height adjustable
- Seats: Front sports seats with enhanced lateral support
- Start-stop system
- Carpet floor mats in the front
- Lashing eyes in the luggage compartment
- Electronic immobilizer
- Central locking with remote control and remote luggage compartment release



Extra equipment

- Tires: 4 all-season tires
- Safety partition net for luggage compartment
- Package: Driver Assistance Package (for manual transmission)
(Intelligent cruise control, adaptive; traffic sign recognition system; wrong-way driver warning function; evasive steering assist; distance display and distance warning; high beam assist (in conjunction with adaptive LED matrix headlights with glare-free high beam assist); blind spot assist with cross traffic alert including emergency braking function (when reversing out of parking spaces) and trailer detection; reversing camera with split-view technology)

Brief expert findings

Documents submitted	At the time of the inspection, the vehicle registration certificate Part 2 (title) was available, but the vehicle registration certificate Part 1 (document) was not. (Copy)
VIN comparison	The vehicle identification number (VIN) was read from the vehicle and its conformity with the submitted documents was confirmed by the undersigned during the inspection.
Inspection	The inspection conditions were sufficient for the assessment of the vehicle. Lifting equipment and/or a pit were available for examining the vehicle.
Test drive	No test drive/shunting maneuver was carried out during the inspection of the vehicle.
Engine function test	An engine test run was performed.

Value reducing factors

No.	Component group	Description
1	Side panel - rear right side	Sill - Scratch(es) - Smart repair

Order/Scope of Order

An order was placed to prepare a sales report for the described vehicle. This report includes the following:

- Description of key vehicle information
- Documentation of equipment features
(*Delivery by third-party service providers*)
- Documentation of damage, defects, missing parts
- Documentation of prior damage, unrepaired prior damage, repainting
- A brief visual or functional inspection of the equipment details, if possible.
(*Functional testing of driver assistance systems is not included in the scope of services!*)
- a photographic documentation of the vehicle



Basis for the order

This product is based on the guidelines for vehicle returns and valuations published by Alphabet Fleet GmbH. The expert makes the specific findings in each individual case objectively, within the framework of the prescribed standards, based on their own expertise.

The vehicle inspection takes place in a fully assembled, unassembled state.

Damage or defects that can only be detected during disassembly/diagnostic work or through further investigation remain within the realm of prognostic risk. An increased risk exists due to concealed defects caused by fraudulent misrepresentation and which were not identifiable by the expert.

Damage or defects resulting from normal use or wear and tear of the vehicle will be accepted in accordance with the applicable standard.

There was no explicit identification or monetary consideration of the expected features within the product.

Features which, in their nature and extent, slightly exceed normal use but do not constitute unacceptable damage, will be documented and indicated as signs of wear, if applicable.

Damage or defects that, according to the applicable standard, can no longer be attributed to normal use or wear and tear are listed under "Value Reducing Factors" in the product description.

Depending on the product specification, a monetary ID can be provided. If this takes place, the costs can be 100% d or pro rata depending on the vehicle's age and mileage.

Previous damages

No apparent prior damage that had been repaired could be found on the vehicle.

Comments

- Die Unterbodenbesichtigung war nur ebenerdig & eingeschränkt möglich. Mehrkosten möglich.



Figure 1: Diagonal front (left)



Figure 2: Diagonal front (right)



Figure 3: Diagonal rear (left)



Figure 4: Diagonal rear (right)



Figure 5: Interior - front



Figure 6: Interior - rear



Figure 7: Instrument cluster



Figure 8: Instrument panel



Figure 9: Interior 360° view



Figure 10: Cargo area



Figure 11: VIN



Figure 12: Mounted tyres

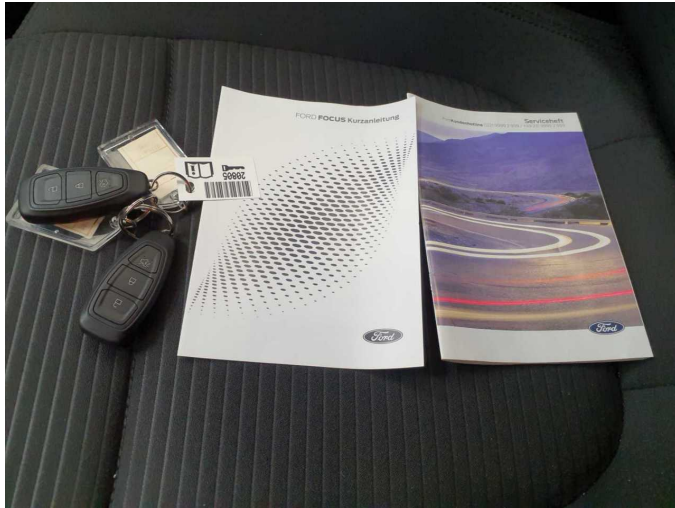


Figure 13: Documents



Figure 14: Documents

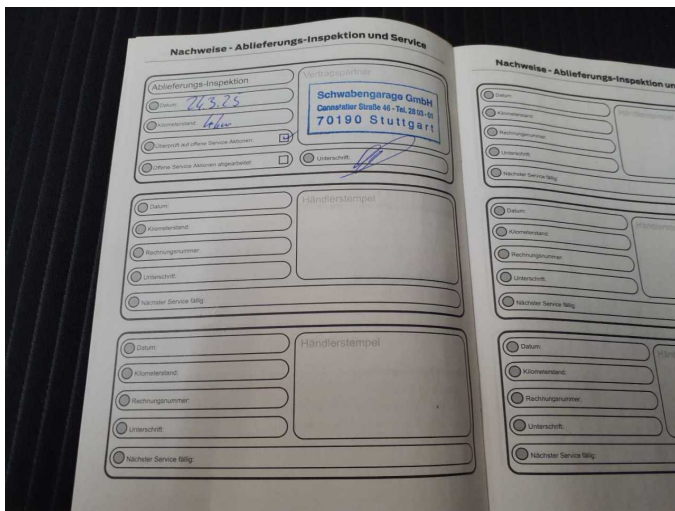


Figure 15: Documents



Figure 16: Navigation



Figure 17: Misc.

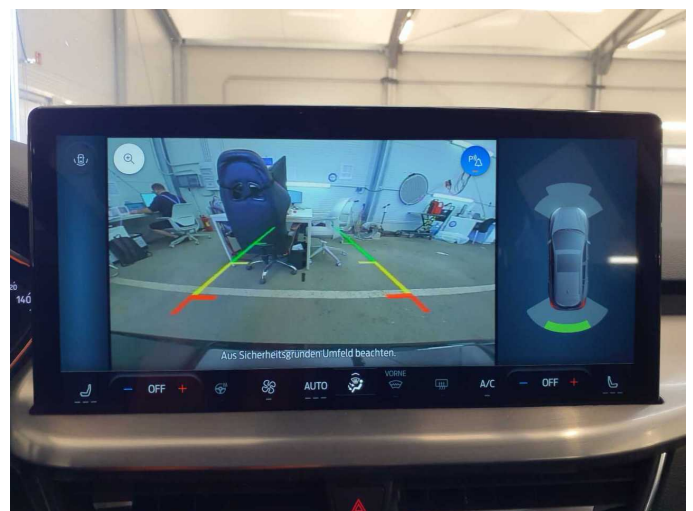


Figure 18: Misc.



Figure 19: Misc.



Figure 20: Misc.



Figure 21: Misc.



Figure 22: Misc.



Figure 23: Misc.



Figure 24: Misc.



Figure 25: Misc.



Figure 26: Misc.



Figure 27: Misc.

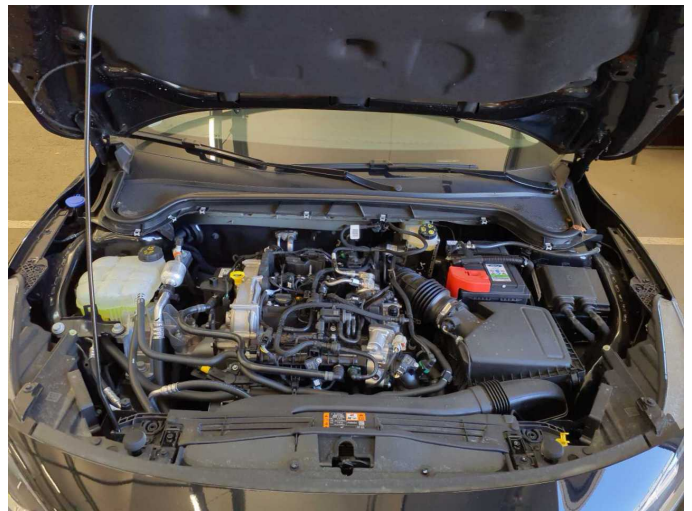


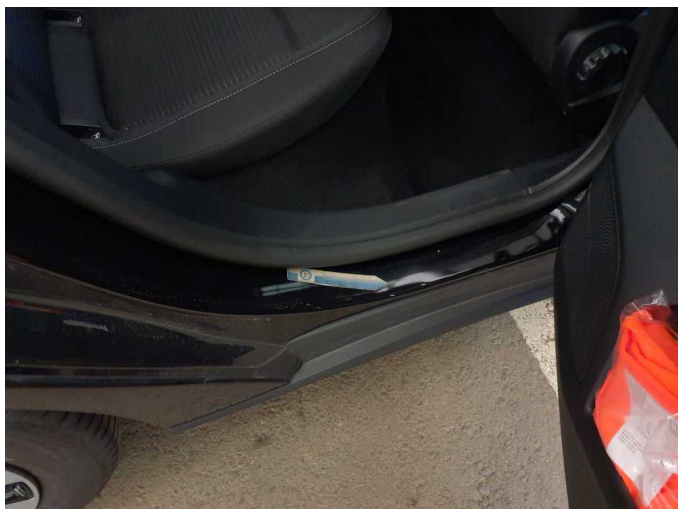
Figure 28: Misc.



Figure 29: Misc.



Figure 30: Misc.



Damage 1: Side panel - rear right side: Sill - Scratch(es) - Smart repair



Damage 1: Side panel - rear right side: Sill - Scratch(es) - Smart repair