

Expertise

Protocol number: 45114534
Order No. / Reference: 26265665
Inspection date: 22 Apr 2026

Manufacturer: Land Rover

Model: Discovery Sport P250 R-Dynamic SE

VIN: SALCA2BX0PH331004



Vehicle details

Manufacturer / Type / Model / Equipment

Land Rover Discovery Sport P250 R-Dynamic SE

Vehicle Identification number SALCA2BX0PH331004

Mileage (Read) 68,408 km

First registration 26 Apr 2023

Number of holders 1

Next periodical technical inspection 04/2026
(Report not on hand)

Power / Engine displacement 183 kw / 1,997 ccm

Fuel type / Cylinder Hybrid Petrol / E / 4

Gearbox / Number of gears Automatic / 9

Type of drive All-wheel drive

Type of vehicle SUV

Colour / colour code Fuji White uni

Doors / Seats 5 / 7

Upholstery type Leather

Colour of upholstery Black-Red



Vehicle details

| | | | |
|--|------------------------------|--------------------------------|--|
| Maintenance booklet / proof | digital proof / complete | Next maintenance in | |
| Last service on / at | 12/2025 at 68,689 km | | |
| Key is / should be | 2 / 2 | FZG documents | ZB#2 (B) was available (copy), ZB#1 (S) was not available. |
| | | Letter No. | GS816918 |
| Previous damage / Accident | Detectable | Repainting | Detectable |
| Inspection conditions | sufficient | Lifting equipment / pit | yes |
| Test drive | Not performed | Engine function test | Performed |
| Manufacturer key number/ type code number | 1590 / AIQ 00188 | | |
| Emission standard | EURO6;WLTP;AP;PI/CI; M, N1 I | fine dust sticker | |
| Permitted total weight | 2,700 kg | Empty weight | |

Tyres

Mounted tyres

| # | Tyre size | Type of tyre | Manufacturer | Tread depth |
|----|-----------------|-----------------------------|--------------|-------------|
| 1) | 235/50 R20 104V | Winter tyres on Light alloy | Goodyear | 5mm / 5mm |
| 2) | 235/50 R20 104V | Winter tyres on Light alloy | Goodyear | 5mm / 5mm |

Additional tyres

| # | Tyre size | Type of tyre | Manufacturer | Tread depth |
|----|-----------------|-----------------------------|--------------|-------------|
| 1) | 235/50 R20 104W | Summer tyres on Light alloy | Pirelli | 6mm / 6mm |
| 2) | 235/50 R20 104W | Summer tyres on Light alloy | Pirelli | 6mm / 6mm |

Replacement

| Typ | Tyre size | Type of tyre | Manufacturer | Tread depth |
|---------|-----------|-------------------------|--------------|-------------|
| Tirefit | | Expiration date 02/2027 | | |

Legend: Tread depth information for the left tire is listed first, for the right tire it is listed second on the axle in the direction of travel.



Equipment

Standard equipment

- Storage compartment in the center console
- Towing eyes front and rear
- Airbag: Knee airbag for driver
- Airbag: Windowbags (head airbags) for the 1st and 2nd row of seats
- Permanent all-wheel drive with Efficient Driveline
- Analog round instruments with 7" TFT on-board computer
- Attention assistant
- Electrically folding and heated exterior mirrors with memory function
- third brake light
- Headliner "Morzine" (fabric) - Ebony
- Tachometer
- Rear and front parking assist
- Electromechanical power steering (EPAS), speed-dependent
- High beam with automatic dimming (Auto High Beam Assist, AHBA)
- Transmission: 9-speed automatic transmission
- Back window, heater
- Interior rearview mirror with automatic dimming function
- ISOFIX mounting points in the rear
- Child safety lock, electric
- Collision warning system monitor
- Front headrests
- Cargo area cover
- Steering wheel: Multifunction leather steering wheel
- Automatic headlight range control
- Navigation: Pivi-Pro with navigation
- Package: Black Pack
- Electric parking brake (EPB)
- Radio: Digital radio (DAB+)
- Radio accessories: 1x USB port
- Tire pressure monitoring system (TPMS)
- Rear view camera
- Secure Tracker
- Sun visors, two-piece with illuminated makeup mirrors
- Lane departure warning system
- Start/stop button for switching the engine on/off.
- 12V power outlet on the back of the center console
- Phone: Apple CarPlay, wireless
- Terrain Response 2 Automatic
- Torque vectoring
- Traffic sign recognition with adaptive speed limiter
- Roll Stability Control (RSC)
- Central locking with remote control
- ABS including electronic traction control (ETC)
- Airbag: Driver and passenger side
- Airbag: Side airbags for driver and front passenger
- Perimetric alarm system
- All Terrain Progress Control (ATPC)
- Ambient interior lighting
- Trailer Stability Assist (TSA)
- Autonomous Emergency Brake Assist (AEB)
- Hill Descent Control (HDC)
- Hill start assist
- Roof: Metal roof
- Decor: Shadow Aluminum
- Dynamic Stability Control (DSC)
- Front door sill trims made of aluminum, with R-Dynamic lettering
- electric window regulator
- Pedestrian protection system
- Adaptive Cruise Control (ACC) with Stop & Go
- electric tailgate
- rear window wiper
- ISOFIX mounting points for the front passenger seat
- Keyless Entry - Keyless access system
- Collision warning system when reversing
- Rear headrests (3)
- Cornering Brake Control (CBC)
- LED headlights with LED signature
- Steering column manually adjustable
- Center console with armrest
- Emergency Brake Assist (EBA)
- Package: Online Pack with data plan
- Upholstery: Duoleather
- Radio accessories: 10" touchscreen
- Radio accessories: Meridian sound system
- Remote
- Steering wheel paddle shifters in matte chrome
- Sensor-controlled driving light system
- Sporty stainless steel pedals
- Start-stop system
- 12 volt sockets in the cargo area
- Phone: Android Auto, wireless
- Telephone: Bluetooth-enabled telephone system with audio streaming
- Blind spot lane assist including proximity sensor
- Lashing eyes in the cargo area
- Immobiliser

Extra equipment



- Adaptive Dynamics (Adaptive suspension offers precise and dynamic driving behavior with maximum comfort by constantly monitoring the position of the wheels and the body movements.)
- Alarm system: perimeter and volumetric
- Automatic climate control (2-zone) with air vents and temperature control (in the 2nd row of seats)
- Cargo area partition net
- Click-and-Hang
- Glazing: Dark tinted windows from the B-pillar back.
- Luggage compartment tray
- Luggage compartment/dog guard – full height
- Package: Premium Interior Package (R-Dynamic, Urban Edition) (Ambiente interior lighting, configurable - Illuminated front door sills with R-Dynamic lettering - Premium floor mats - Twin-rim multifunction full leather steering wheel)
- Roof in contrasting paint finish - Black
- Seats: 3rd row of seats in conjunction with Adaptive Dynamics (with 2 seats)
- Seats: Rear bench, 40:20:40 split and movable (with through-loading option)
- Air conditioning for the 3rd row of seats
- Brake calipers painted red
- Click and Go basic unit (tablet holders on the back of the front seats)
- Click-and-Hook
- Fog light
- Headup display
- Luggage compartment rubber mat
- Package: Winter Package Plus (heated windscreen including heated windscreen washer nozzles - heated steering wheel - headlight cleaning system - auxiliary heater with remote control and timer function)
- Paintwork: Solid color with contrasting roof
- Roof: Panoramic roof with electric sunshade
- Seats: Driver's seat 14-way adjustable (12-way electric) with memory function, heated (Passenger seat: 12-way adjustable (10-way electric, 2-way manual), heated - forward/backward - seat height - seat cushion tilt (driver's seat only) - backrest tilt - lumbar support, 4-way electric adjustable - headrest height, manually adjustable - front seats heated)
- Wheels: 20" alloy wheels, Style 5089 Gloss Silver All Terrain summer tires (8J x 20 with 235/50 R20 tires)

Brief expert findings

| | |
|----------------------|--|
| Documents submitted | At the time of the inspection, the vehicle registration certificate Part 2 (title) was available, but the vehicle registration certificate Part 1 (document) was not. (Copy) |
| VIN comparison | The vehicle identification number (VIN) was read from the vehicle and its conformity with the submitted documents was confirmed by the undersigned during the inspection. |
| Inspection | The inspection conditions were sufficient for the assessment of the vehicle. Lifting equipment and/or a pit were available for examining the vehicle. |
| Test drive | No test drive/shunting maneuver was carried out during the inspection of the vehicle. |
| Engine function test | An engine test run was performed. |

Value reducing factors

| No. | Component group | Description |
|-----|----------------------|--|
| 1 | Body | Identification plate (Farbcode Schild) - Damaged - Replace |
| 2 | Boot lid / rear door | Boot lid - Glued / labelled - De-glue / neutralise |
| 3 | Bonnet | Insulation lining - Damage caused by marten / rodent - Replace |

Wear and tear

| No. | Component group | Description |
|-----|-----------------|--|
| 1 | Front bumper | Front bumper - Abrasion - No deduction |

The vehicle shows signs of wear and tear commensurate with its age and use.

Previous damages

| No. | Previous damage | Extent of damage (Net) |
|-----|---|------------------------|
| 1 | Rear, Provided by user / customer | 2.544,55 € |
| 2 | Side right, Provided by user / customer | 2.874,90 € |



Repainting

No. Repainting

- 1 Mudguard - right side, Door - rear right side, Professionally carried out, Invoice of repair done Non-existent

Paint coat thickness measurement

| | | | |
|-----------------------|--------|------------------------|--------|
| Mudguard - right side | 186 µm | Door - rear right side | 198 µm |
|-----------------------|--------|------------------------|--------|

Order/Scope of Order

An order was placed to prepare a sales report for the described vehicle. This report includes the following:

- Description of key vehicle information
- Documentation of equipment features
(*Delivery by third-party service providers*)
- Documentation of damage, defects, missing parts
- Documentation of prior damage, unrepaired prior damage, repainting
- A brief visual or functional inspection of the equipment details, if possible.
(*Functional testing of driver assistance systems is not included in the scope of services!*)
- a photographic documentation of the vehicle

Basis for the order

This product is based on the guidelines for vehicle returns and valuations published by Alphabet Fleet GmbH. The expert makes the specific findings in each individual case objectively, within the framework of the prescribed standards, based on their own expertise.

The vehicle inspection takes place in a fully assembled, unassembled state.

Damage or defects that can only be detected during disassembly/diagnostic work or through further investigation remain within the realm of prognostic risk. An increased risk exists due to concealed defects caused by fraudulent misrepresentation and which were not identifiable by the expert.

Damage or defects resulting from normal use or wear and tear of the vehicle will be accepted in accordance with the applicable standard.

There was no explicit identification or monetary consideration of the expected features within the product.

Features which, in their nature and extent, slightly exceed normal use but do not constitute unacceptable damage, will be documented and indicated as signs of wear, if applicable.

Damage or defects that, according to the applicable standard, can no longer be attributed to normal use or wear and tear are listed under "Value Reducing Factors" in the product description.

Depending on the product specification, a monetary ID can be provided. If this takes place, the costs can be 100% d or pro rata depending on the vehicle's age and mileage.

Previous damages

According to available information previous damages were repaired at the vehicle. Traces of repairs, which allow conclusions about the area of repair, were not recognizable during the inspection.

Comments

Wartungshistorie gemäß Auftraggeber Informationen.

Der montierte Radsatz ist nicht Bestandteil der Ausstattung.

Servicerestlauf nicht anzeigbar



Figure 1: Diagonal front (left)



Figure 2: Diagonal front (right)



Figure 3: Diagonal rear (left)



Figure 4: Diagonal rear (right)



Figure 5: Interior - front



Figure 6: Interior - rear



Figure 7: Instrument cluster



Figure 8: Instrument panel



Figure 9: Interior 360° view

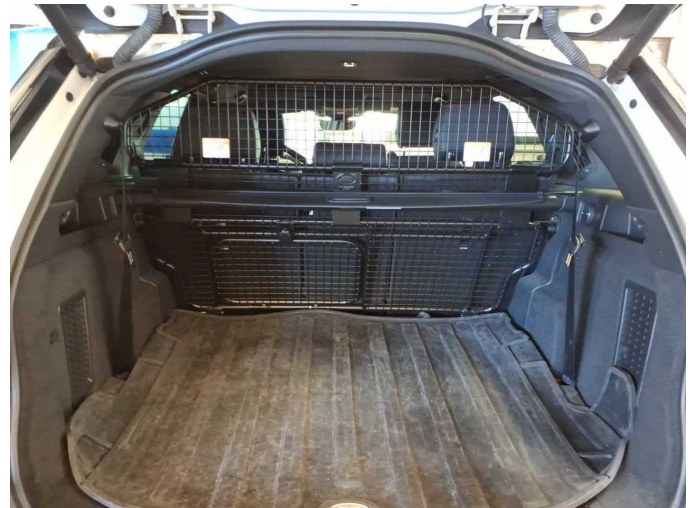


Figure 10: Cargo area

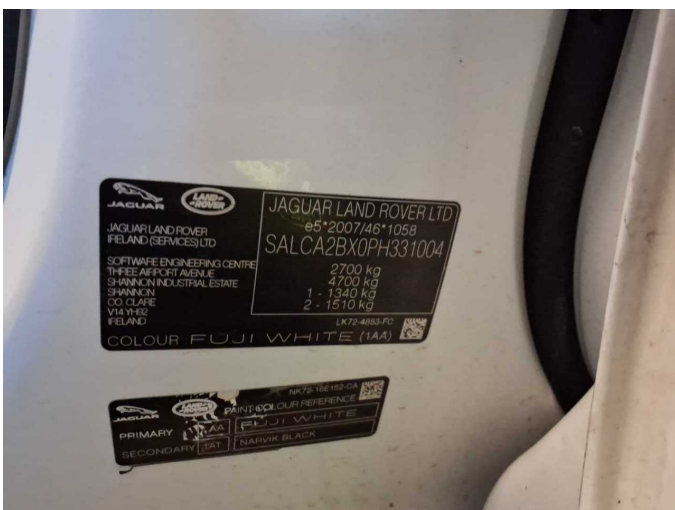


Figure 11: VIN

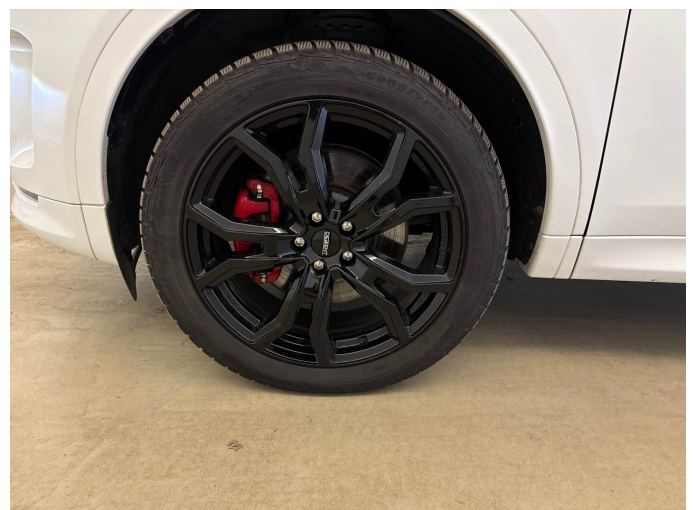


Figure 12: Mounted tyres

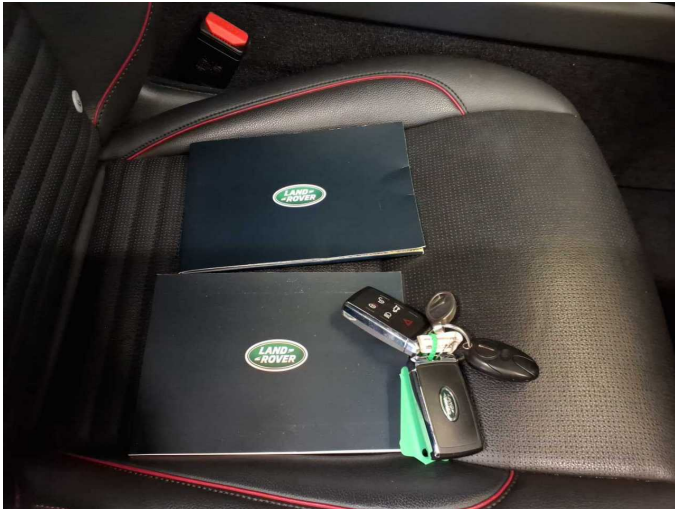


Figure 13: Documents



Figure 14: Additional tyres



Figure 15: Navigation



Figure 16: Misc.



Figure 17: Misc.



Figure 18: Misc.



Figure 19: Misc.



Figure 20: Misc.



Figure 21: Misc.



Figure 22: Misc.

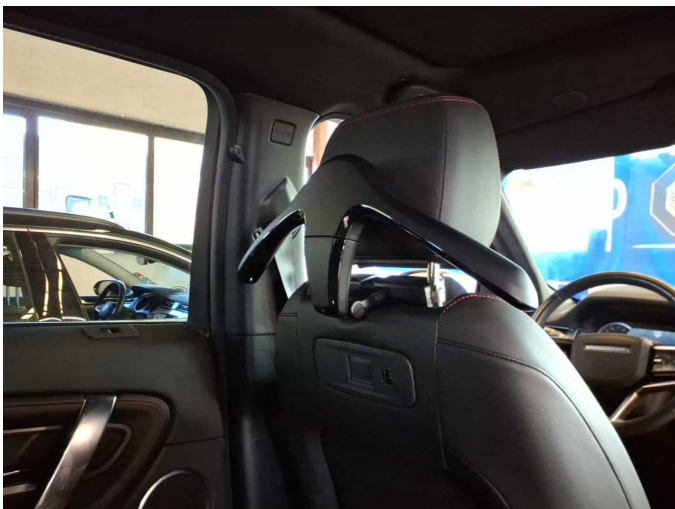


Figure 23: Misc.

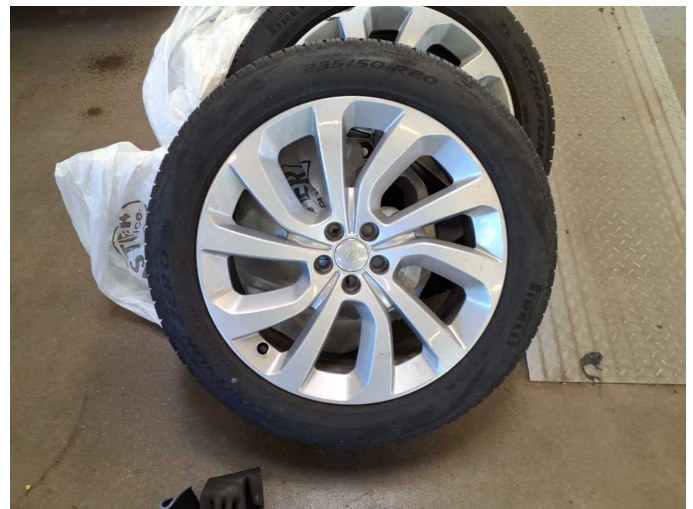


Figure 24: Misc.



Figure 25: Misc.



Figure 26: Misc.



Figure 27: Misc.



Figure 28: Misc.



Figure 29: Misc.



Figure 30: Misc.



Figure 31: Misc.



Figure 32: Misc.



Figure 33: Misc.



Figure 34: Misc.



Figure 35: Misc.



Figure 36: Misc.



Figure 37: Misc.

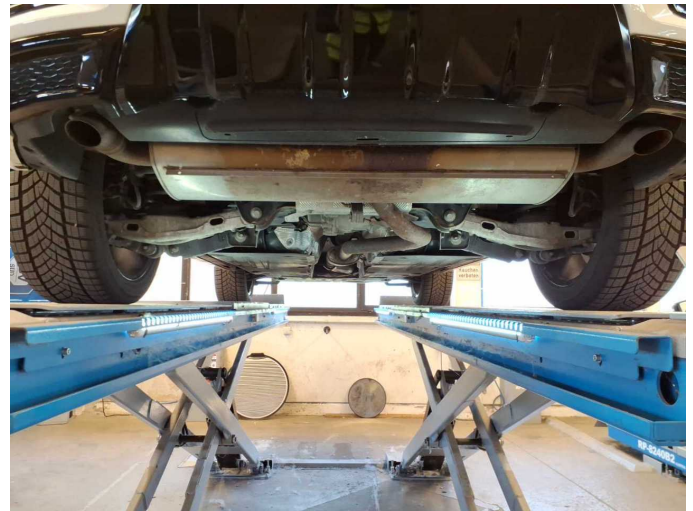
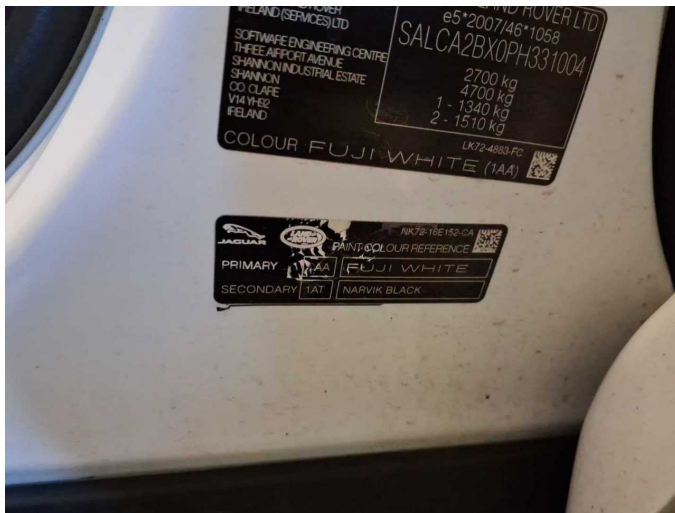


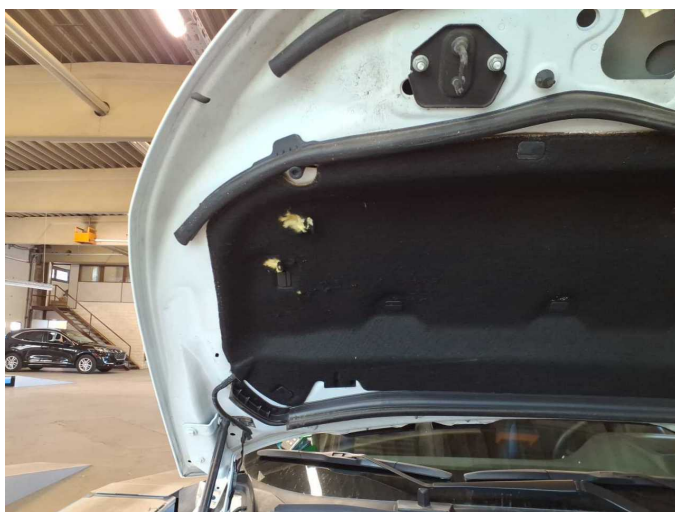
Figure 38: Misc.



Damage 1: Body: Identification plate (Farbcode Schild) - Damaged - Replace



Damage 2: Boot lid / rear door: Boot lid - Glued / labelled - De-glue / neutralise



Damage 3: Bonnet: Insulation lining - Damage caused by marten / rodent - Replace



Damage 3: Bonnet: Insulation lining - Damage caused by marten / rodent - Replace



Repainting 1: Mudguard - right side, Door - rear right side



Repainting 1: Mudguard - right side, Door - rear right side



Repainting 1: Mudguard - right side, Door - rear right side



Repainting 1: Mudguard - right side, Door - rear right side



Wartungshistorie

(gemäß Auftraggeber Informationen)

Fahrgestellnummer: SALCA2BX0PH331004

Hersteller / Modell: LAND ROVER LAND ROVER Discovery Sport P250 R-Dynamic SE

| Datum | KM-Stand | Beschreibung |
|------------|----------|--|
| 09.12.2025 | 68.689 | Luftfiltereinsatz ern; Motoröl b. Wartung; Ölfilter ern; Regelwartungsdienst; Wartung Sonstiges |
| 27.08.2025 | 0 | Reparatur Sonstiges |
| 22.08.2024 | 32.190 | Bremsflüssigkeit; Bremsflüssigkeit ern; Motoröl b. Wartung; Ölfilter ern; Regelwartungsdienst; Wartung Sonstiges |