

## Expertise

Protocol number: 46116961  
Order No. / Reference: 26440743  
Inspection date: 23 Jun 2026

Manufacturer: Ford

Model: Mustang Mach-E Premium

VIN: WF0TK1E79NMA51483



### Vehicle details

#### Manufacturer / Type / Model / Equipment

Ford Mustang Mach-E Premium

**Vehicle Identification number** WF0TK1E79NMA51483

**Mileage (Read)** 86,276 km

**First registration** 14 Mar 2023

**Number of holders** 1

**Next periodical technical inspection** 03/2028  
(Report on hand)

**Power / Engine displacement** 100 kw / 0 ccm

**Fuel type / Cylinder** Electric / 0

**Gearbox / Number of gears** Direct drive / 1

**Type of drive** Rear drive

**Type of vehicle** Saloon car

**Colour / colour code** Dark Matter Grey Metallic

**Doors / Seats** 5 / 5

**Upholstery type** Artificial leather

**Colour of upholstery** Black

**Re-import** no

**readiness to drive** Roadworthy



## Vehicle details

<b>Maintenance booklet / proof</b>	digital evidence / incomplete	<b>Next maintenance in</b>	
<b>Last service on / at</b>	02/2026 at 81,208 km		
<b>Key is / should be</b>	2 / 2	<b>FZG documents</b>	ZB#2 (B) was available (copy), ZB#1 (S) was not available.
		<b>Letter No.</b>	GT877078
<b>Previous damage / Accident</b>	None detectable	<b>Repainting</b>	None detectable
<b>Inspection conditions</b>	sufficient	<b>Lifting equipment / pit</b>	No
<b>Test drive</b>	Not performed	<b>Engine function test</b>	Performed
<b>readiness to drive</b>	Roadworthy		
<b>Manufacturer key number/ type code number</b>	8566 / BVE 00010		
<b>Emission standard</b>	2017/1151;WLTP;reine Elektrofz	<b>fine dust sticker</b>	
<b>Permitted total weight</b>	2,605 kg	<b>Empty weight</b>	

## Tyres

### Mounted tyres

#	Tyre size	Type of tyre	Manufacturer	Tread depth
1)	225/60 R18 104V	Summer tyres on Light alloy	Continental	4mm / 4mm
2)	225/60 R18 104V	Summer tyres on Light alloy	Continental	4mm / 4mm

### Additional tyres

#	Tyre size	Type of tyre	Manufacturer	Tread depth
1)	225/60 R18 104V	Winter tyres on Light alloy	Continental	7mm / 7mm
2)	225/60 R18 104V	Winter tyres on Light alloy	Continental	7mm / 7mm

### Replacement

Typ	Tyre size	Type of tyre	Manufacturer	Tread depth
Tirefit		Expiration date 07/2027		

**Legend: Tread depth information for the left tire is listed first, for the right tire it is listed second on the axle in the direction of travel.**

TÜV SÜD Auto Partner GmbH  
Wiesenring 2  
04159 Leipzig

Inspection location  
ARS Altmann AG Automobillogistik  
Römerstraße 3  
64560 Riedstadt



## Equipment



## Standard equipment

- Acoustic Vehicle Alerting System (AVAS)
- Towbar preparation kit
- Dashboard with carbon-look inserts
- Electrically folding exterior mirrors with Mustang pony projection onto the ground
- Exterior mirrors in contrasting black color
- Tires: 7 J x 19 light alloy wheels (4) in 5-spoke Y-design with tires 225/55 R 19
- Tires: Tire repair kit - maximum speed 80 km/h when used
- Brake calipers, painted red
- Anti-theft alarm system with interior monitoring
- Electronic Stability Program (ESP)
- Electric front and rear windows with all-around closing function
- High Beam Assist, Glare-Free
- Ford Co-Pilot360 including Ford Intelligent Drive Assist - Intelligent Speed Limiter with Speed Limit Display - Pre-Collision Assist - Evasive Steering Assist - Blind Spot Information System with Cross Traffic Alert - Lane Keeping Assist - Traffic Jam Assist with Stop&Go Function - Intelligent Adaptive Cruise Control (iACC) - 360° Camera
- Front trunk with Ford MegaBox
- Heated windshield
- Transmission: 1-speed direct drive - Electronic shifter (rotary switch for automatic transmission)
- rear window wiper
- Interior mirror, automatically dimming
- Intelligent Protection System (IPS) - Front airbags for driver and front passenger - Airbag between driver and front passenger - Driver's side knee airbag - Front and rear head and shoulder airbags - Front and rear side airbags - 3-point seat belts at all seating positions, height-adjustable in the front - Seat belt pretensioners and force limiters in the front and outer rear seats - Front seat belt warning system
- Paint finish: Solid
- Steering wheel: Sensico steering wheel in leather look, heated
- Illuminated makeup mirrors in the driver's and passenger's sun visors
- Rear center armrest with two cup holders
- Mustang LED taillights
- Fatigue warning
- One-pedal drive: Pressing the pedal accelerates the vehicle, releasing it decelerates it (engine braking). The strength of the deceleration can be influenced by the selected driving mode.
- Upholstery: Premium Sensico upholstery in leather look, perforated, in black with red decorative stitching
- Wheel arch trim in glossy black
- Tire Pressure Monitoring System (TPMS)
- Reversing camera with reversing parking assistant
- Windscreen wipers with rain sensor
- Headlights: Matrix LED headlights with daytime running lights
- Ambient lighting, multicolor LEDs
- Anti-lock braking system (ABS) with electronic brake force distribution (EBD)
- Electrically adjustable and heated exterior mirrors with integrated turn signals, ambient lighting and blind spot information system (including cross traffic alert) with emergency braking function when reversing out of a parking space.
- third brake light
- Black woven fabric headliner
- Door sill trims with metal application
- Driver information system with digital instrument panel, 10.2" screen diagonal (25.9 cm) - with range and speed display
- Electric parking brake with auto hold function
- Ford EcoCoach shows the efficiency of current driving behavior.
- FordPass Connect including eCall, live traffic information and Wi-Fi hotspot - Real-time traffic information - Wi-Fi hotspot - eCall emergency call system: In the event of an accident, an emergency call is triggered and important data is transmitted
- Flexible luggage compartment cover and luggage compartment lighting
- Heated rear window
- Rear spoiler
- Intelligent Range: Intelligent Range provides a very precise and realistic estimate of battery range.
- ISOFIX mounts including top tether attachment points on the outer seats of the 2nd row.
- Air conditioning with automatic temperature control for driver and passenger side, separately adjustable (2-zone automatic climate control)
- Rear headrests (3) height adjustable
- Front headrests are height-adjustable
- Charging cables: 2 charging cables for charging the high-voltage battery: Mode 3 charging cable (length 6 m) and home charging cable for standard household socket (length 6.7 m)
- Media console with two USB ports at the front and two USB charging ports at the rear of the center console.
- MyKey key system: individually programmable second key
- Emergency brake light, pulsating illumination of the brake lights during hard braking
- Front and rear parking pilot system
- Pedal assembly with aluminum pads
- Pollen and dust filter
- Post-Collision Assist
- Radio: Ford SYNC 4A audio system with DAB/DAB+ digital radio reception, touchscreen and navigation - Ford SYNC 4A communication and entertainment system - Navigation system - FordPassConnect incl. eCall - Amazon Alexa built-in voice assistant - Radio player with DAB and 6 speakers - 15.5" touchscreen in center console - DAB/DAB+ digital radio reception (Digital Audio Broadcasting)



- Keys: Two classic vehicle keys and up to 4 digital keys (Phone as a Key). Keyless entry – also possible via door code or smartphone using the FordPass app, keyless start via smartphone using the FordPass app, start button or code.
  - Seat: Rear seat backrests, foldable, 60:40 split
  - Seats: Front seats, individually and variably heated
  - Seats: Comfort seats, front
  - Pocket on the driver's and passenger's seat backrest
  - Phone: Inductive charging station for mobile devices according to the Qi standard; compatibility depends on the device.
  - Lashing eyes in the luggage compartment
  - Central locking system with overall locking function
- Side windows from the 2nd row of seats and rear window, dark tinted.
  - Power steering
  - Seats: Driver and front passenger seats, 8-way electrically adjustable with adjustable lumbar support and memory function
  - Power outlet: 12-volt connection in the luggage compartment
  - Carpet floor mats front and rear, velour
  - Electric door child safety lock
  - Traffic sign recognition system
  - Immobiliser

**Extra equipment**

- Package: Technology Package+ - B&O Sound System - Electric, sensor-controlled tailgate
- Panoramic roof

**Brief expert findings**

Documents submitted	At the time of the inspection, the vehicle registration certificate Part 2 (title) was available, but the vehicle registration certificate Part 1 (document) was not. (Copy)
VIN comparison	The vehicle identification number (VIN) was read from the vehicle and its conformity with the submitted documents was confirmed by the undersigned during the inspection.
Inspection	The inspection conditions were sufficient for the assessment of the vehicle. No lifting equipment or pit was available for inspecting the vehicle. Therefore, inspection of the vehicle's underside was only possible to a limited extent.
Test drive	No test drive/shunting maneuver was carried out during the inspection of the vehicle.
Engine function test	An engine test run was performed.
readiness to drive	The vehicle was roadworthy at the time of inspection.

**Value reducing factors**

No.	Component group	Description
1	Misc.	Inspection / maintenance (Nachweis 1. & 2. Jahresinspektion fehlt) - No evidence - No deduction
2	Mudguard - left side	Mudguard - left side - dent(s) - Smooth repair work
3	Door - front right side	Door - Dent / paintcoat damage - Repair and paint

**Wear and tear**

No.	Component group	Description
1	Fuel system	Tank cap - Scratch(es) - No deduction
2	Boot lid / rear door	Boot lid - Scratch(es) - No deduction
3	Vehicle glazing	Windscreen - Stone chips - No deduction
4	Bonnet	Bonnet - Stone chips - No deduction
5	Front bumper	Front bumper - Stone chips - No deduction
6	Rear bumper	Rear bumper - Scratch(es) - No deduction
7	Vehicle glazing	Windscreen - Glued / labelled - No deduction

The vehicle shows signs of wear and tear commensurate with its age and use.



## Order/Scope of Order

An order was placed to prepare a sales report for the described vehicle. This report includes the following:

- Description of key vehicle information
- Documentation of equipment features  
*(Delivery by third-party service providers)*
- Documentation of damage, defects, missing parts
- Documentation of prior damage, unrepaired prior damage, repainting
- A brief visual or functional inspection of the equipment details, if possible.  
*(Functional testing of driver assistance systems is not included in the scope of services!)*
- a photographic documentation of the vehicle

## Basis for the order

This product is based on the guidelines for vehicle returns and valuations published by Alphabet Fleet GmbH. The expert makes the specific findings in each individual case objectively, within the framework of the prescribed standards, based on their own expertise.

The vehicle inspection takes place in a fully assembled, unassembled state.

Damage or defects that can only be detected during disassembly/diagnostic work or through further investigation remain within the realm of prognostic risk. An increased risk exists due to concealed defects caused by fraudulent misrepresentation and which were not identifiable by the expert.

Damage or defects resulting from normal use or wear and tear of the vehicle will be accepted in accordance with the applicable standard.

There was no explicit identification or monetary consideration of the expected features within the product.

Features which, in their nature and extent, slightly exceed normal use but do not constitute unacceptable damage, will be documented and indicated as signs of wear, if applicable.

Damage or defects that, according to the applicable standard, can no longer be attributed to normal use or wear and tear are listed under "Value Reducing Factors" in the product description.

Depending on the product specification, a monetary ID can be provided. If this takes place, the costs can be 100% d or pro rata depending on the vehicle's age and mileage.

## Previous damages

No apparent prior damage that had been repaired could be found on the vehicle.

## Comments

- Die Unterbodenbesichtigung war nur ebenerdig & eingeschränkt möglich. Mehrkosten möglich.
- Winterradsatz ist kein Bestandteil des Auslieferungsumfangs.



Figure 1: Diagonal front (left)



Figure 2: Diagonal front (right)



Figure 3: Diagonal rear (left)



Figure 4: Diagonal rear (right)

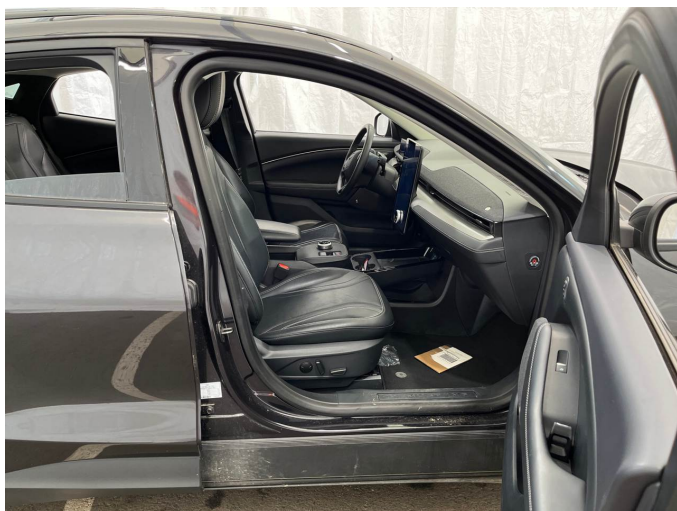


Figure 5: Interior - front



Figure 6: Interior - rear



Figure 7: Instrument cluster



Figure 8: Instrument panel



Figure 9: Interior 360° view



Figure 10: Cargo area



Figure 11: VIN



Figure 12: Mounted tyres



Figure 13: Documents

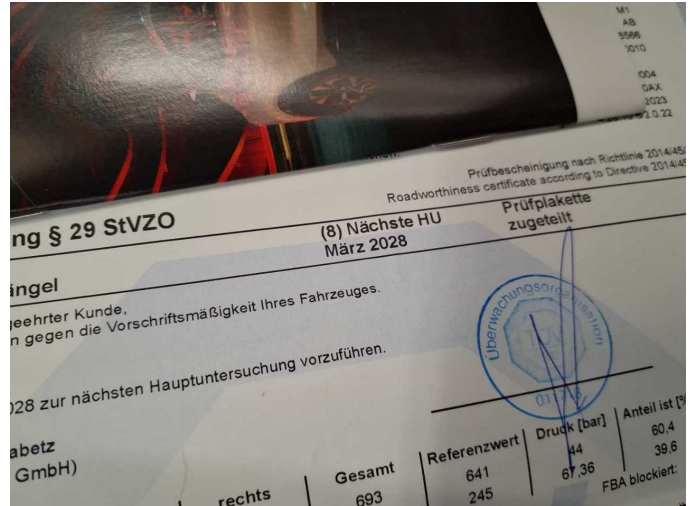


Figure 14: Documents



Figure 15: Additional tyres



Figure 16: Navigation

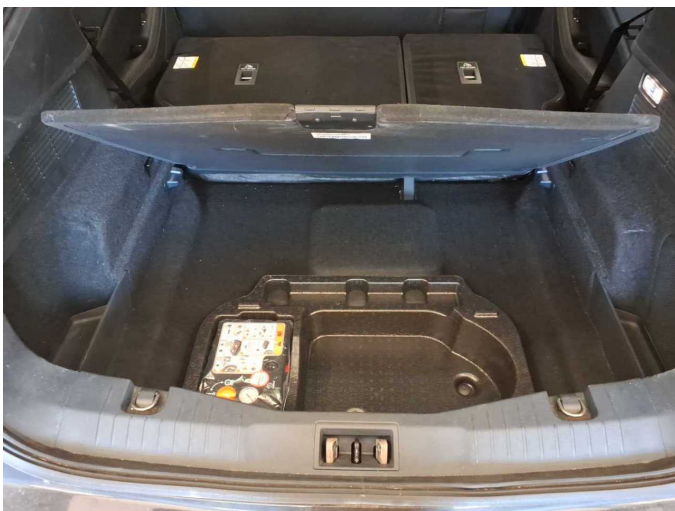


Figure 17: Misc.



Figure 18: Misc.



Figure 19: Misc.



Figure 20: Misc.

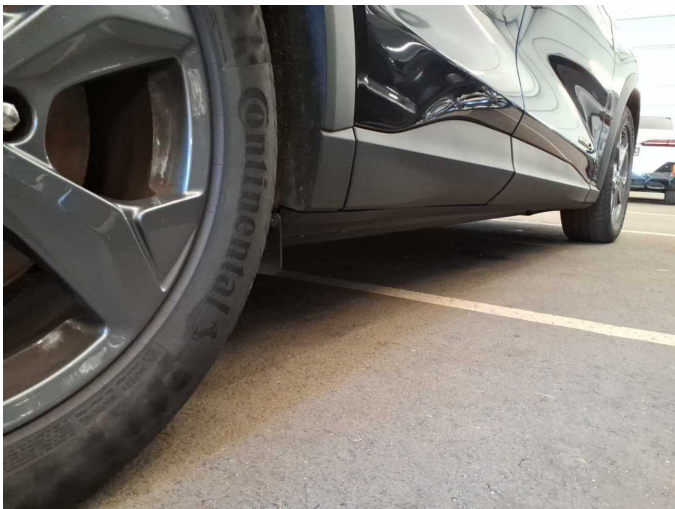


Figure 21: Misc.



Figure 22: Misc.

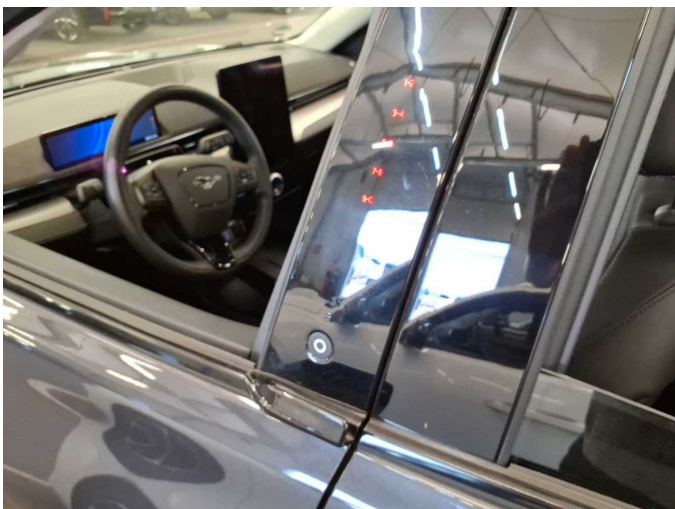


Figure 23: Misc.



Figure 24: Misc.



Figure 25: Misc.



Figure 26: Misc.



Figure 27: Misc.



Figure 28: Misc.



Figure 29: Misc.



Figure 30: Misc.



Figure 31: Misc.



Figure 32: Misc.



Figure 33: Misc.



Figure 34: Misc.



Figure 35: Misc.



Figure 36: Misc.



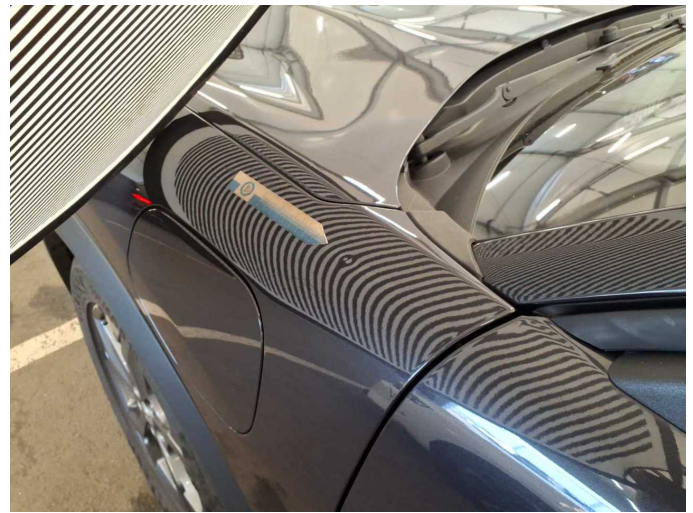
Figure 37: Misc.



Figure 38: Misc.



Figure 39: Misc.



Damage 2: Mudguard - left side: Mudguard - left side - dent(s) - Smooth repair work



Damage 2: Mudguard - left side: Mudguard - left side - dent(s) - Smooth repair work



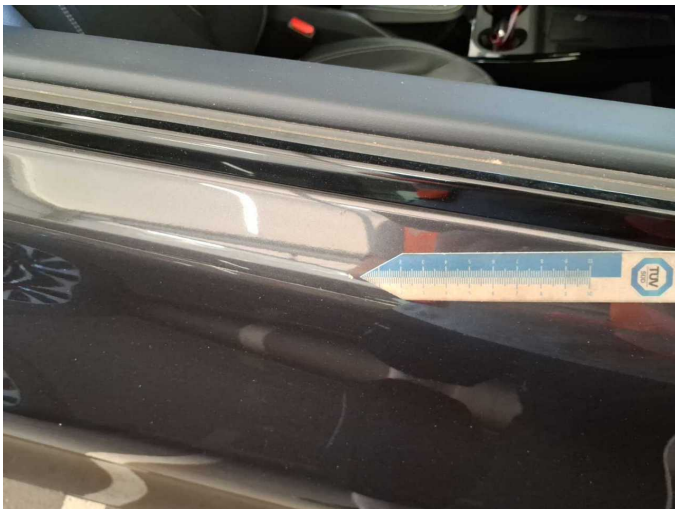
Damage 2: Mudguard - left side: Mudguard - left side - dent(s) - Smooth repair work



**Damage 2:** Mudguard - left side: Mudguard - left side - dent(s) - Smooth repair work



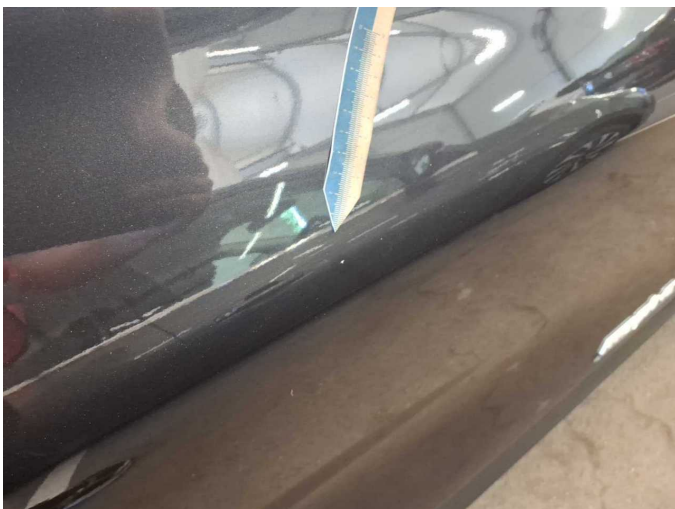
**Damage 2:** Mudguard - left side: Mudguard - left side - dent(s) - Smooth repair work



**Damage 3:** Door - front right side: Door - Dent / paintcoat damage - Repair and paint



**Damage 3:** Door - front right side: Door - Dent / paintcoat damage - Repair and paint



**Damage 3:** Door - front right side: Door - Dent / paintcoat damage - Repair and paint



**Damage 3:** Door - front right side: Door - Dent / paintcoat damage - Repair and paint



**Damage 3:** Door - front right side: Door - Dent / paintcoat damage - Repair and paint



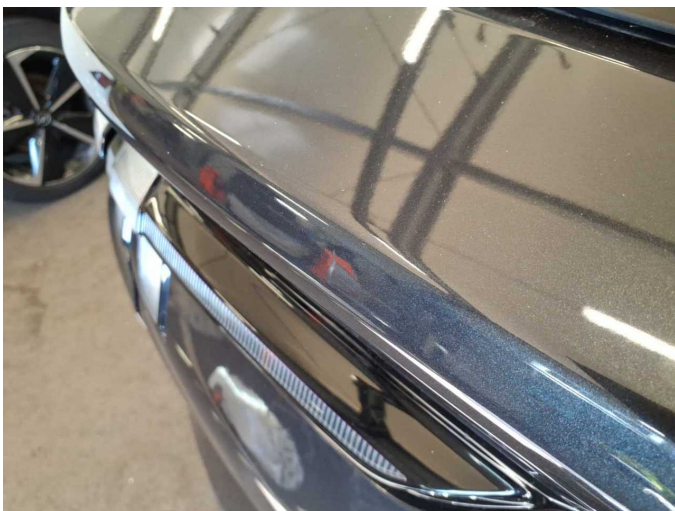
**Damage 3:** Door - front right side: Door - Dent / paintcoat damage - Repair and paint



**Damage 3:** Door - front right side: Door - Dent / paintcoat damage - Repair and paint



**Wear and tear 1:** Fuel system: Tank cap - Scratch(es) - No deduction



**Wear and tear 2:** Boot lid / rear door: Boot lid - Scratch(es) - No deduction



**Wear and tear 2:** Boot lid / rear door: Boot lid - Scratch(es) - No deduction



**Wear and tear 3:** Vehicle glazing: Windscreen - Stone chips - No deduction



**Wear and tear 3:** Vehicle glazing: Windscreen - Stone chips - No deduction



**Wear and tear 4:** Bonnet: Bonnet - Stone chips - No deduction



**Wear and tear 4:** Bonnet: Bonnet - Stone chips - No deduction



**Wear and tear 4:** Bonnet: Bonnet - Stone chips - No deduction



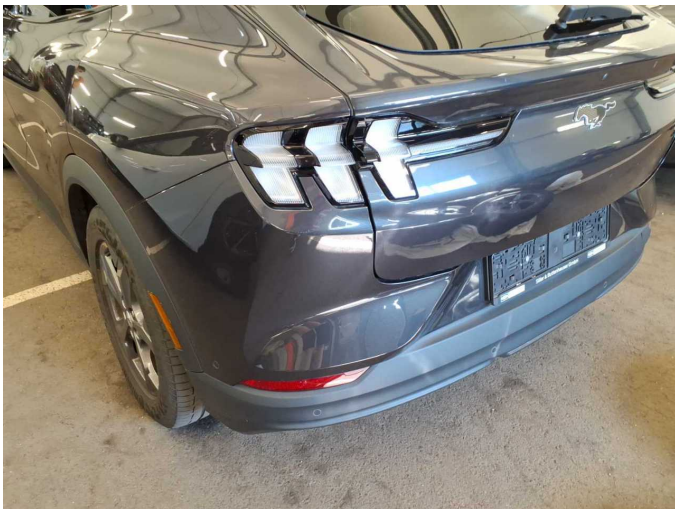
**Wear and tear 5:** Front bumper: Front bumper - Stone chips - No deduction



**Wear and tear 5:** Front bumper: Front bumper - Stone chips - No deduction



**Wear and tear 6:** Rear bumper: Rear bumper - Scratch(es) - No deduction



**Wear and tear 6:** Rear bumper: Rear bumper - Scratch(es) - No deduction



**Wear and tear 6:** Rear bumper: Rear bumper - Scratch(es) - No deduction



**Wear and tear 7:** Vehicle glazing: Windscreen - Glued / labelled - No deduction



# Wartungshistorie

(gemäß Auftraggeber Informationen)

Fahrgestellnummer: WF0TK1E79NMA51483

Hersteller / Modell: FORD FORD Mustang Mach-E

Datum	KM-Stand	Beschreibung
09.02.2026	81.208	Bremsflüssigkeit; Bremsflüssigkeit ern; Regelwartungsdienst; Systemtest/ Eigendiagnose