

Expertise

Protocol number: 46198244
Order No. / Reference: 26457165
Inspection date: 19 Jun 2026

Manufacturer: Mercedes-Benz

Model: C 220 d T 9G-TRONIC AMG Line

VIN: W1KAH0EB4PF095036



Vehicle details

Manufacturer / Type / Model / Equipment

Mercedes-Benz C 220 d T 9G-TRONIC AMG Line

Vehicle Identification number W1KAH0EB4PF095036

Mileage (Read) 102,832 km

First registration 28 Feb 2023

Number of holders 1

Power / Engine displacement 147 kw / 1,993 ccm

Fuel type / Cylinder Hybrid Diesel / E / 4

Gearbox / Number of gears Automatic / 9

Type of drive Rear drive

Type of vehicle Station wagon

Colour / colour code Black University

Doors / Seats 5 / 5

Upholstery type Alcantara / Leather

Colour of upholstery Black-Anthracite



Vehicle details

Maintenance booklet / proof	digital proof / complete	Next maintenance in	280 Tag(e)
Key is / should be	2 / 2	FZG documents	ZB#2 (B) was available (copy), ZB#1 (S) was not available.
		Letter No.	GQ139456
Previous damage / Accident	Detectable	Repainting	None detectable
Inspection conditions	sufficient	Lifting equipment / pit	No
Test drive	Not performed	Engine function test	Performed
Manufacturer key number/ type code number	2222 / AYH 00291		
Emission standard	EURO6;WLTP;AP;PI/CI; M, N1 I	fine dust sticker	
Permitted total weight	2,400 kg	Empty weight	

Tyres

Mounted tyres

#	Tyre size	Type of tyre	Manufacturer	Tread depth
1)	225/45 R18 95Y	Summer tyres on Light alloy	Nexen	6mm / 6mm
2)	245/40 R18 93Y	Summer tyres on Light alloy	Nexen	6mm / 6mm

Legend: Tread depth information for the left tire is listed first, for the right tire it is listed second on the axle in the direction of travel.



Equipment

Standard equipment

- Airbag for driver and front passenger
- Airbag: Center airbag
- Airbag: Windowbag for driver and front passenger
- AMG floor mats
- Left and right exterior mirrors are heated and electrically adjustable
- Brake system with larger brake discs on the front axle
- black roof rails
- Double cup holder at the front
- EASY-PACK tailgate
- Electronic Stability Program (ESP)
- Electric windows (4-way)
- Transmission: 9-speed automatic, 9G-TRONIC
- Heated rear window
- Instrument panel and door sills in ARTICO man-made leather in black nappa look
- Mechanical child safety lock for the rear doors
- Rear headrests (3)
- Paint finish: Solid
- LED High Performance Headlights
- Mercedes-Benz emergency call system
- Center console in high-gloss black
- Package: Interior lighting package
- Radio: Extended MBUX functions
- Radio accessories: Digital radio (DAB)
- Radio accessories: Central display
- Tire pressure monitoring system (TPMS)
- Wheels: 45.7 cm (18") AMG light-alloy wheels in a 5-spoke design
- Lane Keeping Assist, active
- High-visibility vest for drivers
- Central locking with remote control
- Airbag: Automatic passenger airbag deactivation
- Airbag: Side airbag for driver and front passenger
- Ambient lighting with 64 light colors
- AMG sports pedal assembly made of brushed stainless steel with rubber studs
- Basic services
- Brake assist, active
- Diesel particulate filter
- DYNAMIC SELECT
- ECO start/stop function
- Chassis: Sport chassis with sport direct steering
- Speed Limit Assistant
- rear window wiper
- Interior headliner fabric crystal grey
- ISOFIX child seat attachment with top tether in the rear
- KEYLESS-GO start function
- THERMATIC automatic climate control with 1 climate zone
- Front headrests
- Cargo area cover including EASY-PACK safety net
- Steering wheel: Multifunction sports steering wheel in Nappa leather
- Package: Storage
- Upholstery: ARTICO leatherette/DINAMICA microfiber
- Radio: MBUX
- Radio accessories: Communication module (LTE) for using Mercedes me connect services
- Remote Services Plus
- Windscreen wipers with rain sensor
- Seats: Rear seat backrests foldable
- Cruise control
- Electronic immobilizer
- Decorative elements, metal structure



Extra equipment

- Ambient lighting with 64 light colors (with directly illuminated light lines.)
- Black fabric headliner
- Center console metal structure
- Package: Advanced Comfort Package (Heated seats for driver and front passenger - Seat Comfort Package: - Numerous electric and manual adjustment options for the front seats to adapt to the specific body and comfort requirements of the driver and front passenger - Electro-pneumatic 4-way lumbar support and lateral support adjustment with control element on the seat - Electric seat cushion tilt adjustment - Electric height adjustment - Electric backrest adjustment - Electric seat cushion depth adjustment - Mechanical longitudinal adjustment - Mechanical headrest adjustment)
- Package: High-End Business (Mirror Package: Electrically folding exterior mirrors, automatic dimming, ambient lighting - Advanced Comfort Package: Heated seats for driver/front passenger, 4-way lumbar support, seat comfort package - Parking Package: with reversing camera - Assistance Package: Blind Spot Assist - Advanced Infotainment Package: MBUX Navigation Premium, traffic sign recognition, smartphone integration, driver display - 31.2 cm (12.3"), central display - 30.2 cm (11.9") touchscreen LCD - fuel tank with largest capacity)
- Package: Light (Adaptive Highbeam Assist - automatic switching of the high beams, camera on the inside of the windshield, detects oncoming and preceding illuminated vehicles, activated by pressing the steering wheel control lever to the high beam position)
- Package: Parking (12 ultrasonic sensors - reversing camera - Active Parking Assist with PARKTRONIC: detects free parking spaces, assisted parking, visual and acoustic warning, display of camera and ultrasonic data in the media display - Cross traffic warning: can provide visual and acoustic warnings when reversing out of a parking space and, if necessary, automatically initiate emergency braking - Reverse maneuvering brake: can trigger a braking process - Drive-away assist)
- Seats: Sports seats
- Type designation removed from trunk lid
- Heat-insulating dark tinted glass
- Towbar with ESP trailer stabilization
- Illuminated entry sills with Mercedes-Benz lettering
- THERMATIC automatic climate control with 2 climate zones (control via the central display or the climate control unit in the center console; sensor system for detecting, for example, indoor/outdoor temperature, sunlight, humidity, and dew point; automatic recirculation (only in conjunction with navigation system); ventilation system consisting of: 3 center vents and 2 side vents; fine dust activated carbon filter for filtering dust, soot, and pollen; dew point sensor; residual heat function for efficient use of engine waste heat)
- Package: Assistance (Blind Spot Assist: The system can warn you of side collisions with other road users in your blind spot, especially as soon as you activate the turn signal. Even after driving, the system remains vigilant and warns you if you open the door at the wrong moment. An important safety feature – especially for cyclists.)
- Package: High-End Infotainment Package (MBUX Navigation Premium (hard drive navigation, pre-installation for Live Traffic Information), Traffic Sign Assist, Smartphone Integration (connects the mobile phone wirelessly to the multimedia system via Apple CarPlay and Android Auto), Driver Display - 31.2 cm (12.3") color LCD display, Central Display - 30.2 cm (11.9") touch display, MBUX Augmented Reality for navigation.)
- Package: Night (for T-Model with AMG Line exterior) (Radiator grille: diamond grille with silver pins and high-gloss black louvre (18") AMG light-alloy wheels in 5-spoke design, aerodynamically optimized, black-painted, high-sheen finish, with front axle 225/45 R18 on 7.5Jx18 ET40, rear axle 245/40 R18 on 8Jx18 ET52 AMG front apron with high-gloss black wing trim. Rear bumper with high-gloss black wing trim. Belt trim strip and window surrounds in high-gloss black. Exterior mirror housings in high-gloss black. Heat-insulating dark-tinted rear glass (from the B-pillar). Roof rails in black.)
- Wheels: 45.7 cm (18") AMG light-alloy wheels in 5-spoke design (aerodynamically optimized, painted black and high-sheen finish with front axle 225/45 R 18 on 7.5 J x 18 ET 40, rear axle 245/40 R 18 on 8.5 J x 18 ET 52)

Brief expert findings

Documents submitted	At the time of the inspection, the vehicle registration certificate Part 2 (title) was available, but the vehicle registration certificate Part 1 (document) was not. (Copy)
VIN comparison	The vehicle identification number (VIN) was read from the vehicle and its conformity with the submitted documents was confirmed by the undersigned during the inspection.
Inspection	The inspection conditions were sufficient for the assessment of the vehicle. No lifting equipment or pit was available for inspecting the vehicle. Therefore, inspection of the vehicle's underside was only possible to a limited extent.
Test drive	No test drive/shunting maneuver was carried out during the inspection of the vehicle.
Engine function test	An engine test run was performed.



Value reducing factors

No.	Component group	Description
1	Misc.	Inspection / maintenance - No evidence - No deduction
2	Misc.	Main inspection - No evidence - No deduction
3	Door - front left side	Door edge - Scratch(es) - Smart repair
4	Mudguard - right side	Mudguard - right side - Scratch(es) - Paint
5	Wheel / tyres	Alloy rim - front right side - Scratch(es) - Replace
6	Vehicle glazing	Windscreen - Stone chips - Replace

Wear and tear

No.	Component group	Description
1	Body	A-pillar - left side - Stone chips - No deduction
2	Front bumper	Front bumper - Scratch(es) - No deduction
3	Bonnet	Bonnet - Stone chips - No deduction
4	Door - front left side	Door - Stone chips - No deduction

The vehicle shows signs of wear and tear commensurate with its age and use.

Missing parts

Description

Interior - Boot cover / roller cover

Previous damages

No.	Previous damage	Extent of damage (Net)
1	Front, Provided by user / customer, from 16 Feb 2025	4.398,86 €

Order/Scope of Order

An order was placed to prepare a sales report for the described vehicle. This report includes the following:

- Description of key vehicle information
- Documentation of equipment features
(Delivery by third-party service providers)
- Documentation of damage, defects, missing parts
- Documentation of prior damage, unrepaired prior damage, repainting
- A brief visual or functional inspection of the equipment details, if possible.
(Functional testing of driver assistance systems is not included in the scope of services!)
- a photographic documentation of the vehicle



Basis for the order

This product is based on the guidelines for vehicle returns and valuations published by Alphabet Fleet GmbH. The expert makes the specific findings in each individual case objectively, within the framework of the prescribed standards, based on their own expertise.

The vehicle inspection takes place in a fully assembled, unassembled state.

Damage or defects that can only be detected during disassembly/diagnostic work or through further investigation remain within the realm of prognostic risk. An increased risk exists due to concealed defects caused by fraudulent misrepresentation and which were not identifiable by the expert.

Damage or defects resulting from normal use or wear and tear of the vehicle will be accepted in accordance with the applicable standard.

There was no explicit identification or monetary consideration of the expected features within the product.

Features which, in their nature and extent, slightly exceed normal use but do not constitute unacceptable damage, will be documented and indicated as signs of wear, if applicable.

Damage or defects that, according to the applicable standard, can no longer be attributed to normal use or wear and tear are listed under "Value Reducing Factors" in the product description.

Depending on the product specification, a monetary ID can be provided. If this takes place, the costs can be 100% or pro rata depending on the vehicle's age and mileage.

Previous damages

According to available information previous damages were repaired at the vehicle. Traces of repairs, which allow conclusions about the area of repair, were not recognizable during the inspection.

ALPHABET



Figure 1: Diagonal front (left)

ALPHABET



Figure 2: Diagonal front (right)

ALPHABET



Figure 3: Diagonal rear (left)

ALPHABET



Figure 4: Diagonal rear (right)



Figure 5: Interior - front



Figure 6: Interior - rear



Figure 7: Instrument cluster



Figure 8: Instrument panel



Figure 9: Interior 360° view



Figure 10: Cargo area



Figure 11: VIN



Figure 12: Mounted tyres



Figure 13: Documents



Figure 14: Navigation

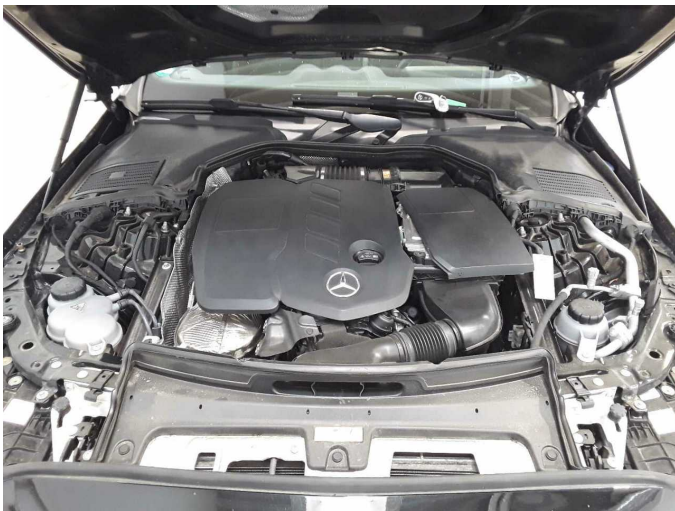


Figure 15: Misc.



Figure 16: Misc.

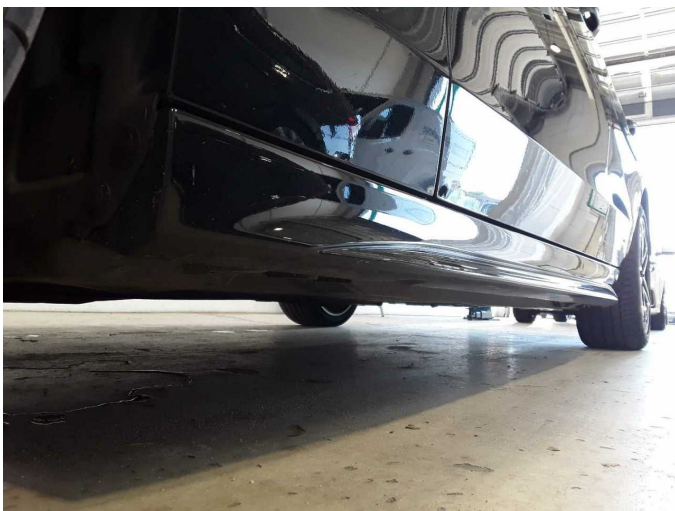


Figure 17: Misc.

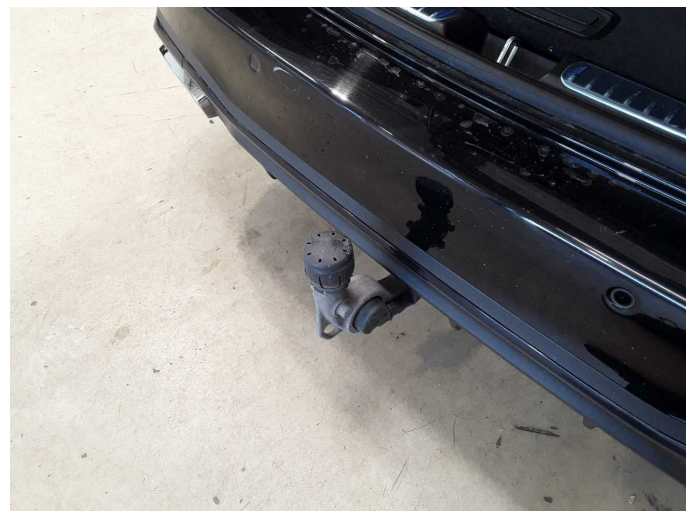


Figure 18: Misc.



Figure 19: Misc.



Figure 20: Misc.



Figure 21: Misc.



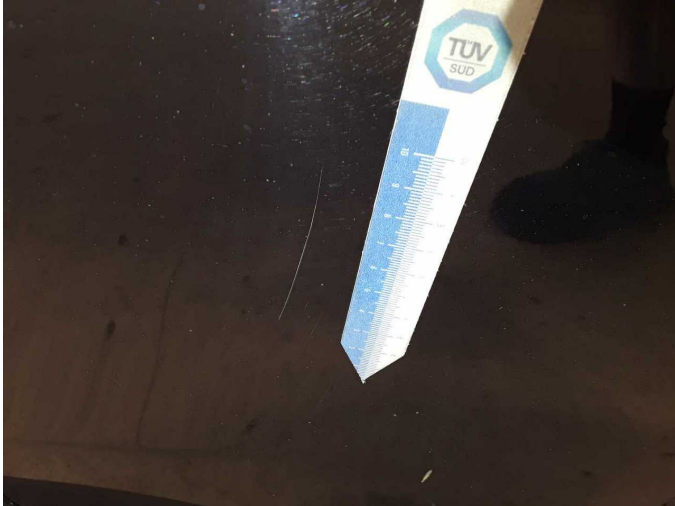
Damage 3: Door - front left side: Door edge - Scratch(es) - Smart repair



Damage 3: Door - front left side: Door edge - Scratch(es) - Smart repair



Damage 4: Mudguard - right side: Mudguard - right side - Scratch(es) - Paint



Damage 4: Mudguard - right side: Mudguard - right side - Scratch(es) - Paint



Damage 5: Wheel / tyres: Alloy rim - front right side - Scratch(es) - Replace



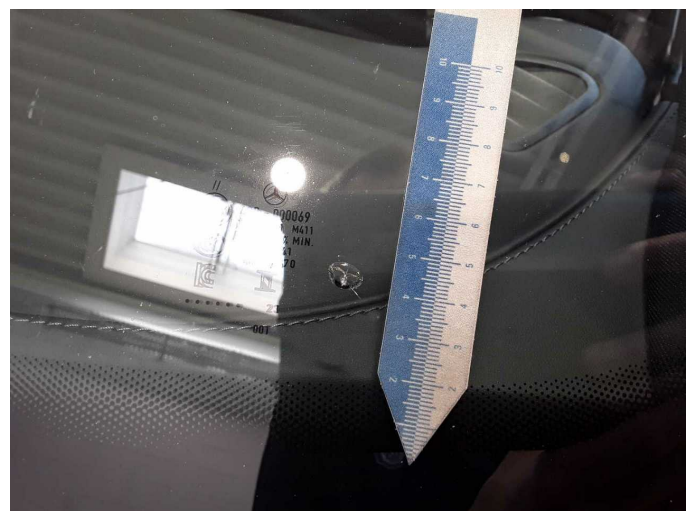
Damage 5: Wheel / tyres: Alloy rim - front right side - Scratch(es) - Replace



Damage 5: Wheel / tyres: Alloy rim - front right side - Scratch(es) - Replace



Damage 6: Vehicle glazing: Windscreen - Stone chips - Replace



Damage 6: Vehicle glazing: Windscreen - Stone chips - Replace