

Expertise

Protocol number: 45855433
Order No. / Reference: 26322177
Inspection date: 9 Jun 2026

Manufacturer: Skoda

Model: Octavia Combi 2.0 TDI DSG RS

VIN: TMBJK8NX2RY014595



Vehicle details

Manufacturer / Type / Model / Equipment

Skoda Octavia Combi 2.0 TDI DSG RS

Vehicle Identification number TMBJK8NX2RY014595

Mileage (Read) 52,024 km

First registration 14 Aug 2023

Number of holders 1

Power / Engine displacement 147 kw / 1,968 ccm

Fuel type / Cylinder Diesel / 4

Gearbox / Number of gears Automatic / 7

Type of drive Front drive

Type of vehicle Station wagon

Colour / colour code Brilliant-Silber Metallic

Doors / Seats 5 / 5

Upholstery type Cloth

Colour of upholstery Black-Red

Vehicle with smoke odor no



Vehicle details

Maintenance booklet / proof	digital proof / complete	Next maintenance in	7,300 km
Last service on / at	02/2025 at 29,264 km		
Key is / should be	2 / 2	FZG documents	ZB#2 (B) was available (copy), ZB#1 (S) was not available.
		Letter No.	GT122436
Previous damage / Accident	None detectable	Repainting	None detectable
Inspection conditions	sufficient	Lifting equipment / pit	yes
Test drive	Not performed	Engine function test	Performed
Manufacturer key number/ type code number	8004 / AVI 00125		
Emission standard	EURO6;WLTP;AP;PI/CI; M, N1 I	fine dust sticker	
Permitted total weight	2,042 kg	Empty weight	

Tyres

Mounted tyres

#	Tyre size	Type of tyre	Manufacturer	Tread depth
1)	225/45 R18 91Y	Summer tyres on Light alloy	Bridgestone	4mm / 4mm
2)	225/45 R18 91Y	Summer tyres on Light alloy	Bridgestone	4mm / 4mm

Additional tyres

#	Tyre size	Type of tyre	Manufacturer	Tread depth
1)	205/55 R17 95H	Winter tyres on Light alloy	Pirelli	5mm / 5mm
2)	205/55 R17 95H	Winter tyres on Light alloy	Pirelli	5mm / 5mm

Replacement

Typ	Tyre size	Type of tyre	Manufacturer	Tread depth
	Tirefit	Expiration date 05/2027		

Legend: Tread depth information for the left tire is listed first, for the right tire it is listed second on the axle in the direction of travel.

TÜV SÜD Auto Partner GmbH
Wiesenring 2
04159 Leipzig

Inspection location
Mosolf SE & Co.KG
Faberweg 25
73230 Kirchheim unter Teck



Equipment



Standard equipment

- Storage compartment in the luggage compartment with cargo element
- Airbag for driver and front passenger (passenger airbag can be deactivated)
- Airbag, driver's knee airbag
- Airbag, front side airbags
- Ambient lighting (dashboard, front trim strips and footwell with selectable color climate) in the interior as well as logo projector on the outside)
- Automatically dimming exterior mirror (driver's side)
- Electrically adjustable and heated exterior mirrors
- Heated windshield washer nozzles including 5l washer fluid reservoir
- Glasses compartment in the headliner
- AERO roof rails in gloss black
- Diesel particulate filter
- Tachometer
- Electronic parking brake including auto-hold function
- Electronic Stability Control (ESC)
- Electric windows front and rear, including anti-pinch protection and child safety lock
- Cruise control system
- Tinted windows
- Heated rear window
- Rear window wiper including windshield washer system
- Interior mirror automatically dimming
- Kessy, keyless entry and start-stop system
- Child safety lock for the rear doors and windows
- Removable boot cover
- LED fog lights
- LED taillights in crystal glass look and animated turn signals
- LED headlights with LED daytime running lights
- Remote release of the rear seat backrests in the trunk
- Steering wheel: height and reach adjustable
- Steering wheel: Leather steering wheel in sport design with multifunction buttons including shift paddles (with decorative stitching in red or grey - infotainment and driver assistance system operation)
- Front and rear parking sensors
- Upholstery: Cloth
- Radio: Bolero music system with capacitive 10" color display
- Radio accessories: Bluetooth hands-free system
- Radio accessories: SmartLink (Apple CarPlay - Android Auto)
- Tire pressure monitoring
- Tire mobility kit (tire repair spray incl. compressor)
- Safety lights in the front side doors
- Seats: Height-adjustable driver and passenger seats (including lumbar support)
- Storage compartments (storage compartments in the front door panels with 1.5l bottle holders, storage compartments in the rear door panels with 0.5l bottle holders, storage compartments in the doors with felt lining)
- Airbag, head airbags
- Airbag: Center airbag front
- Anti-lock braking system (ABS)
- Traction control (ASR)
- Center section of the dashboard with microfiber cover in black and red decorative stitching
- Electrically folding exterior mirrors
- Hill start assist
- Hydraulic brake assist (HBA)
- black headliner
- Dark Carbon decorative trim
- Digital Cockpit Plus
- Third brake light
- Electronic transverse differential lock (XDS+)
- Driving profile selection
- Front radar assistant including city emergency braking function and pedestrian and cyclist detection
- Transmission: 7-speed dual-clutch transmission (DSG)
- Green tec: Start/stop system including brake energy recuperation
- Rear spoiler
- ISOFIX preparations on the front passenger seat and the outer rear seats including top tether anchorage
- Climatronic air conditioning (2-zone) (fully automatic, separately adjustable for driver and front passenger, and with anti-allergen filter & activated carbon filter)
- LED license plate lights
- LED matrix headlights and dynamic high beam assist (AFS) (Dynamic and automatic headlight range control - headlight cleaning system including washer fluid level control)
- Rear center armrest with pass-through option
- Front center armrest, including storage compartment
- Engine drag torque control (MSR)
- Fatigue detection
- Pedals in stainless steel look
- Progressive steering
- Radio accessories: 2 USB-C ports on the front
- Radio accessories: 8 speakers
- Radio accessories: Digital radio reception DAB+
- Radio accessories: Voice control
- Rain sensor and driving light assistant ((Easy Light Assist) (Tunnel light, Coming Home, Leaving Home))
- Seat belts (Three three-point seat belts in the rear)
- Seats: Heated front seats
- Seats: Rear seat backrest split 60:40, foldable
- Seats: Sports seats with integrated headrests in the front and height-adjustable headrests in the rear.



- SKODA Care Connect (SOS emergency call function (eCall+ including automatic activation in the event of an accident with airbag deployment) - Mobility service (connection option for rapid assistance in case of breakdown) - Information service (connection option to the hotline for all questions relating to vehicle functions) - Free remote vehicle access for 1 year (Remote Access) with access to vehicle data and functions via smartphone, e.g. parking position, activating hazard warning lights, current fuel level)
- Lashing eyes in the trunk
- Central locking including remote control integrated into the key and EASY Start

Extra equipment

- Luggage net partition
- Package: Columbus infotainment package (Style, RS) (Columbus navigation system - Bluetooth hands-free system - Infotainment Online (3-year term), online map updates: for navigation, traffic situation, petrol stations and parking space search - 2 x USB charging ports in the rear as well as USB charging port on the rearview mirror)
- Package: Parking & Lights (for RS) (cornering lights in the fog lights - reversing camera)
- Wheels: 18" Comet alloy wheels, black gloss turned (7.5J x 18, ET 48 with 225/45 R18 tires)

- Speed limiter
- Lane keeping assistant (Lane Assist)
- 12V socket in the trunk
- Sunset (rear window and rear side windows tinted dark)
- Telephone: Phonebox with inductive charging function (connection via external antenna)
- Phone: Wireless SmartLink for Apple CarPlay
- Textile floor mats
- Front door sill trims
- Immobiliser

- Paint finish: Metallic
- Package: Comfort Plus (Combi RS, Sportline) (3-zone Climatronic - Acoustic glazing in the front side windows - Heated outer rear seats - Heated steering wheel - 230 V socket and 3 x USB charging ports - Sunshades in the rear doors - Multifunctional storage compartment in the boot - Sleeping headrests in the rear - Electric tailgate operation with comfort opening)
- Panoramic sunroof, electric (deletion of the glasses compartment in the headliner)
- Heated windscreen

Brief expert findings

Documents submitted	At the time of the inspection, the vehicle registration certificate Part 2 (title) was available, but the vehicle registration certificate Part 1 (document) was not. (Copy)
VIN comparison	The vehicle identification number (VIN) was read from the vehicle and its conformity with the submitted documents was confirmed by the undersigned during the inspection.
Inspection	The inspection conditions were sufficient for the assessment of the vehicle. Lifting equipment and/or a pit were available for examining the vehicle.
Test drive	No test drive/shunting maneuver was carried out during the inspection of the vehicle.
Engine function test	An engine test run was performed.

Value reducing factors

No.	Component group	Description
1	Trim / covers	Floor mats - Holes - Replace
2	Front bumper	Spoiler - Scratch(es) - Replace
3	Side panel - rear right side	Side panel (Delle geht über die Kante) - dent(s) - Repair and paint

Missing parts

Description

Documents - Service book (Digitaler Ausdruck)



Order/Scope of Order

An order was placed to prepare a sales report for the described vehicle. This report includes the following:

- Description of key vehicle information
- Documentation of equipment features
(Delivery by third-party service providers)
- Documentation of damage, defects, missing parts
- Documentation of prior damage, unrepaired prior damage, repainting
- A brief visual or functional inspection of the equipment details, if possible.
(Functional testing of driver assistance systems is not included in the scope of services!)
- a photographic documentation of the vehicle

Basis for the order

This product is based on the guidelines for vehicle returns and valuations published by Alphabet Fleet GmbH. The expert makes the specific findings in each individual case objectively, within the framework of the prescribed standards, based on their own expertise.

The vehicle inspection takes place in a fully assembled, unassembled state.

Damage or defects that can only be detected during disassembly/diagnostic work or through further investigation remain within the realm of prognostic risk. An increased risk exists due to concealed defects caused by fraudulent misrepresentation and which were not identifiable by the expert.

Damage or defects resulting from normal use or wear and tear of the vehicle will be accepted in accordance with the applicable standard.

There was no explicit identification or monetary consideration of the expected features within the product.

Features which, in their nature and extent, slightly exceed normal use but do not constitute unacceptable damage, will be documented and indicated as signs of wear, if applicable.

Damage or defects that, according to the applicable standard, can no longer be attributed to normal use or wear and tear are listed under "Value Reducing Factors" in the product description.

Depending on the product specification, a monetary ID can be provided. If this takes place, the costs can be 100% d or pro rata depending on the vehicle's age and mileage.

Previous damages

No apparent prior damage that had been repaired could be found on the vehicle.

Comments

- Der beiliegende Winterradsatz ist kein Bestandteil des Auslieferungsumfangs.



Figure 1: Diagonal front (left)



Figure 2: Diagonal front (right)



Figure 3: Diagonal rear (left)



Figure 4: Diagonal rear (right)



Figure 5: Interior - front



Figure 6: Interior - rear



Figure 7: Instrument cluster



Figure 8: Instrument panel



Figure 9: Interior 360° view



Figure 10: Cargo area



Figure 11: VIN



Figure 12: Mounted tyres

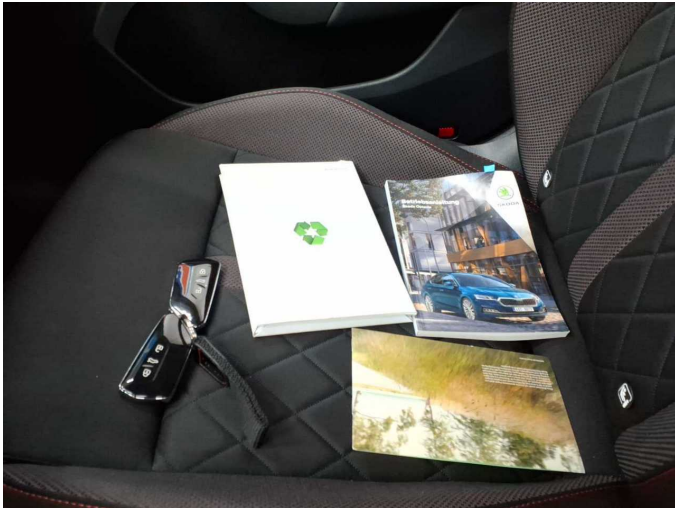


Figure 13: Documents



Figure 14: Documents



Figure 15: Additional tyres



Figure 16: Additional tyres



Figure 17: Navigation



Figure 18: Misc.



Figure 19: Misc.



Figure 20: Misc.



Figure 21: Misc.

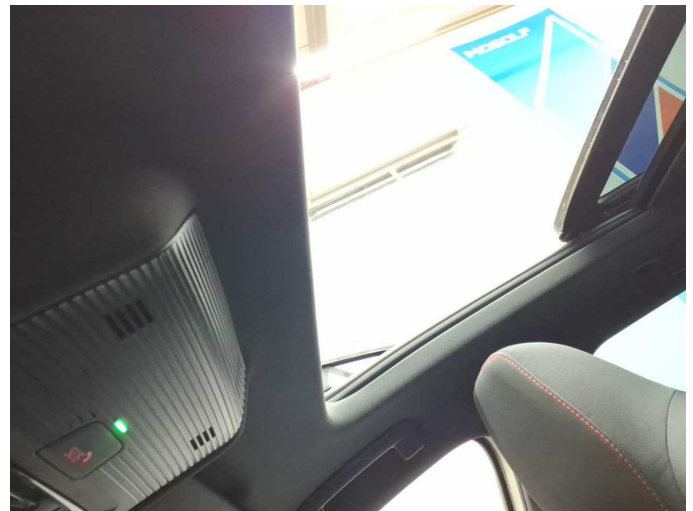


Figure 22: Misc.



Figure 23: Misc.



Figure 24: Misc.



Figure 25: Misc.



Figure 26: Misc.



Figure 27: Misc.



Figure 28: Misc.



Figure 29: Misc.



Figure 30: Misc.



Figure 31: Misc.



Figure 32: Misc.

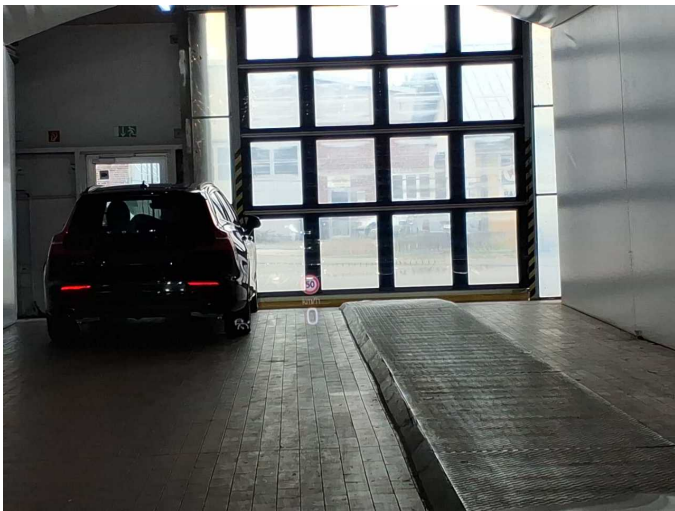
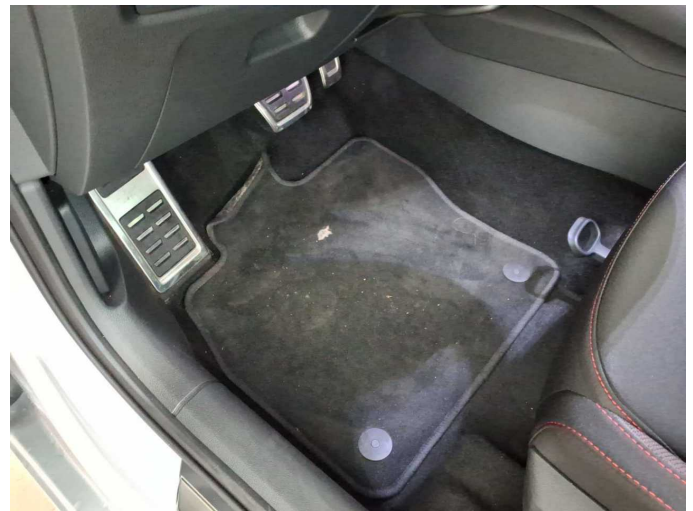


Figure 33: Misc.



Damage 1: Trim / covers: Floor mats - Holes - Replace



Damage 1: Trim / covers: Floor mats - Holes - Replace



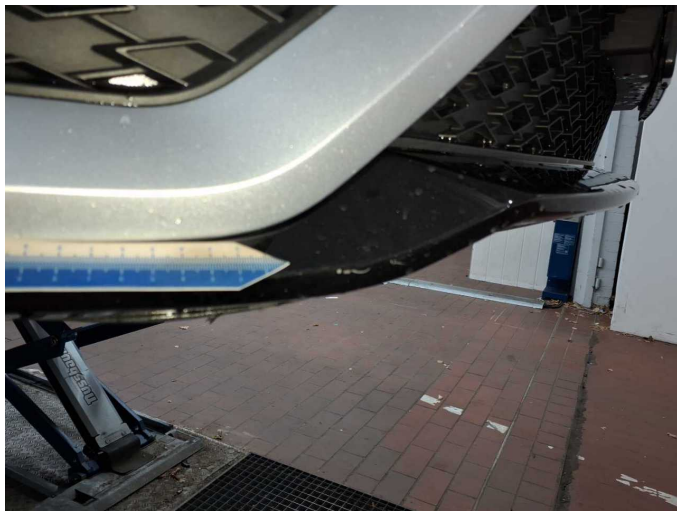
Damage 2: Front bumper: Spoiler - Scratch(es) - Replace



Damage 2: Front bumper: Spoiler - Scratch(es) - Replace



Damage 2: Front bumper: Spoiler - Scratch(es) - Replace



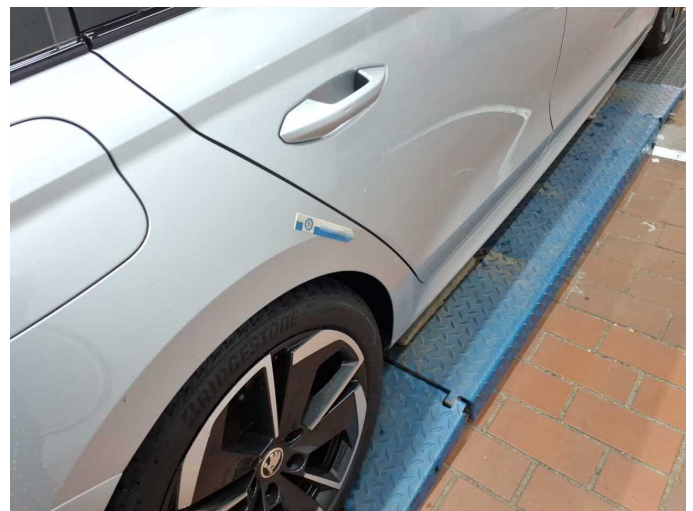
Damage 2: Front bumper: Spoiler - Scratch(es) - Replace



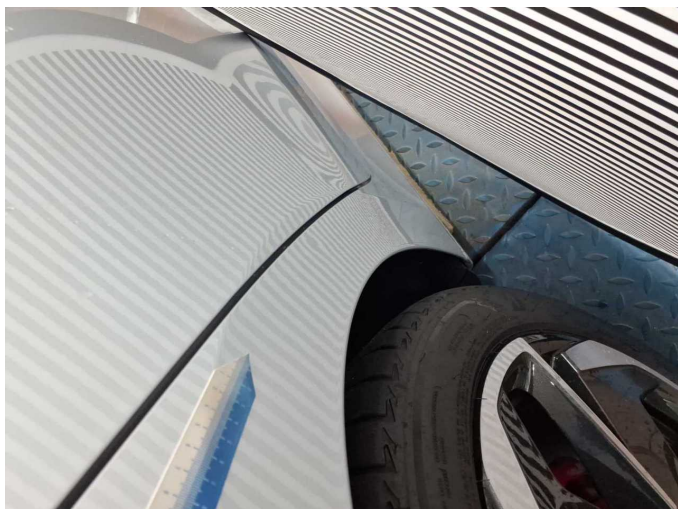
Damage 3: Side panel - rear right side: Side panel (Delle geht über die Kante) - dent(s) - Repair and paint



Damage 3: Side panel - rear right side: Side panel (Delle geht über die Kante) - dent(s) - Repair and paint



Damage 3: Side panel - rear right side: Side panel (Delle geht über die Kante) - dent(s) - Repair and paint



Damage 3: Side panel - rear right side: Side panel (Delle geht über die Kante) - dent(s) - Repair and paint



Wartungshistorie

(gemäß Auftraggeber Informationen)

Fahrgestellnummer: TMBJK8NX2RY014595

Hersteller / Modell: SKODA SKODA Octavia Combi 2.0 TDI DSG RS

Datum	KM-Stand	Beschreibung
28.04.2026	50.327	Systemtest/Eigendiagnose
26.02.2025	29.264	Motoröl b. Wartung; Ölfilter ern; Regelwartungsdienst; Wartung Sonstiges