

Mercedes-Benz CLA SB '19

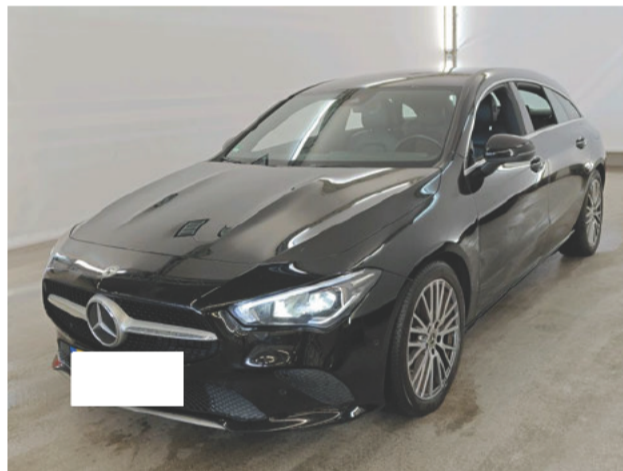
Vehicle information

Make:	Mercedes-Benz	License:	
Gearbox:	Automatic	Body color:	
Model:	CLA SB '19	VIN:	W1K1186841N298396
Fuel type:	Petrol	Power:	100 kW
Version:	CLA SB 180 Bus.Sol.Lux.Aut	First registration	22/03/2022
Mileage:	163498 km	N° of doors:	

Damage summary

Front	(2)
Left	(4)
Rear	(3)
Right	(5)

Commercial pictures





Options according to the inspector

Central consol F	Yes	GPS	Yes	Headlights Xenon/LED/Laser	Yes
Radio multimedia	Yes	Telephone equipment	Yes		

Damages

--	--	--	--	--	--

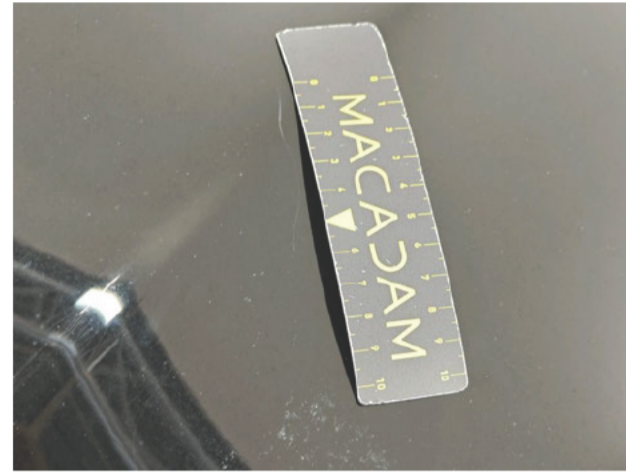
Alloy rim FL

Scratch(es)
Repair and paint (complete)
Left



Bonnet

Scratch(es)
Repair and paint (complete)
Front



Boot lid covering R

Scratch(es)
Smart repair
Rear



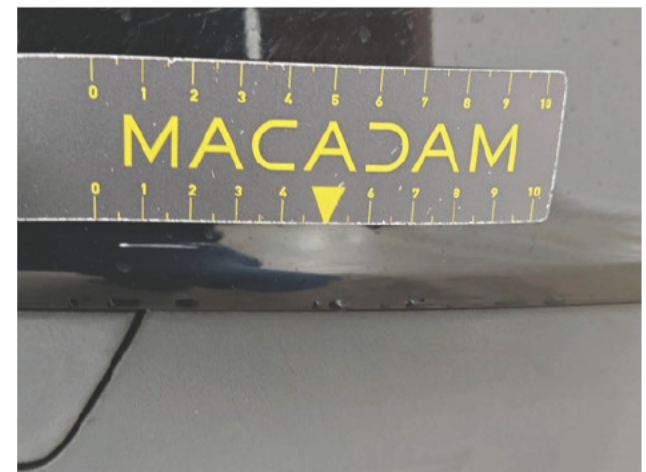
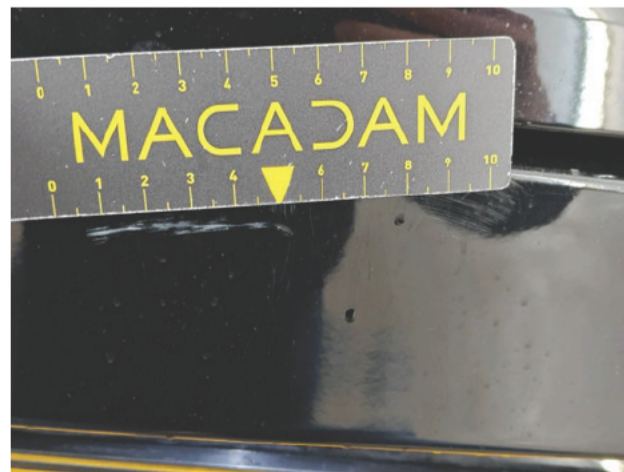
Bumper F

Scratch(es)
Repair and paint (complete)
Front



Bumper R

Scratch(es)
Repair and paint (complete)
Rear



Door FL

Scratch(es)

Repair and paint (partial)

Left



Door FR

Scratch(es)

Repair and paint (partial)

Right



Door frame FR

Scratch(es)

Repair and paint (partial)

Right



Door RL

Scratch(es)

Repair and paint (partial)

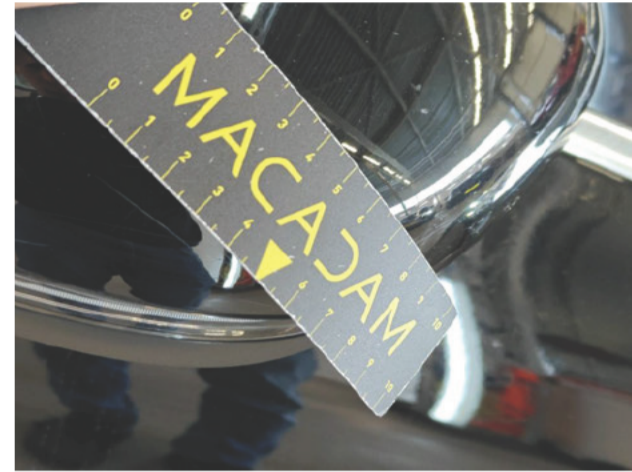
Left



Door RR
Scratch(es)
Repair and paint (partial)
Right



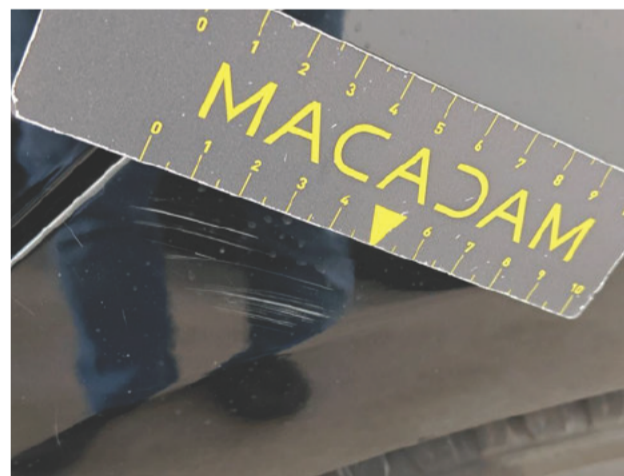
Outside rear-view mirror housing R
Scratch(es)
Replace and paint
Right



Tailgate / Boot
Scratch(es)
Repair and paint (partial)
Rear



Wing RL
Scratch(es)
Repair and paint (complete)
Left



Wing RR
Scratch(es)
Repair and paint (complete)
Right



Tyres

Front Left

Winter

225/45/18/95/V

BF Goodrich

4.3 mm

Front Right

Winter

225/45/18/95/V

BF Goodrich

4.8 mm

Rear Left

Winter

225/45/18/95/V

BF Goodrich

7.3 mm

Rear Right

Winter

225/45/18/95/V

BF Goodrich

7.0 mm

Checks

CO2 Emission	139 Customer data reset (contacts, e-mails, messages)	Yes
Digital maintenance	N/A Luggage cover	Yes
Number head rests	5 Number of charging cables (normal)	0
Number of charging cables (rapid charge)	0 Number of keys total	2
Service book	Yes User's manual	Yes

Information on the content and the scope of the inspection report:

- The assessment is based on the sales standards specified by the customer.
- Acceptable usage damages according to the sales standards are not always documented in this status report.
- The specified repair methods and/or resulting repair times have been determined, taking into account modern industrial repair methods.
- The purchasing dealer should assess individual repair costs.
- The inspection was carried out in a non disassembly condition. Macadam cannot be held responsible for any missing information. For further information, please contact the seller.