

## Expertise

Protocol number: 46216820  
Order No. / Reference: 26508572  
Inspection date: 25 Jun 2026

Manufacturer: Ford

Model: Transit 350 L3H2 Lkw VA Trend

VIN: WF0EXXTRENLO1008



### Vehicle details

#### Manufacturer / Type / Model / Equipment

Ford Transit 350 L3H2 Lkw VA Trend

**Vehicle Identification number** WF0EXXTRENLO1008

**Mileage (Read)** 139,813 km

**First registration** 25 Feb 2022

**Number of holders** 1

**Power / Engine displacement** 96 kw / 1,995 ccm

**Fuel type / Cylinder** Diesel / 4

**Gearbox / Number of gears** Manual / 6

**Type of drive** Front drive

**Type of vehicle** Van

**Colour / colour code** Frost-Weiß

**Doors / Seats** 4 / 3

**Upholstery type** Cloth

**Colour of upholstery** Black-Anthracite



## Vehicle details

<b>Maintenance booklet / proof</b>	digital proof / complete	<b>Next maintenance in</b>	7,000 km
<b>Last service on / at</b>	06/2025 at 116,791 km		
<b>Key is / should be</b>	2 / 2	<b>FZG documents</b>	ZB#2 (B) was available (copy), ZB#1 (S) was not available.
		<b>Letter No.</b>	GH425487
<b>Previous damage / Accident</b>	Detectable	<b>Repainting</b>	None detectable
<b>Inspection conditions</b>	sufficient	<b>Lifting equipment / pit</b>	No
<b>Test drive</b>	Not performed	<b>Engine function test</b>	Performed
<b>Manufacturer key number/ type code number</b>	8566 / BNG 09990		
<b>Emission standard</b>	EURO6;WLTP;AR;PI/CI;N1 III, N2	<b>fine dust sticker</b>	
<b>Permitted total weight</b>	3,500 kg	<b>Empty weight</b>	

## Tyres

### Mounted tyres

#	Tyre size	Type of tyre	Manufacturer	Tread depth
1)	235/65 R16 115R	Summer tyres on Steel rim with wheel cover	Continental	7mm / 7mm
2)	235/65 R16 115R	Summer tyres on Steel rim with wheel cover	Continental	7mm / 7mm

### Additional tyres

#	Tyre size	Type of tyre	Manufacturer	Tread depth
1)	235/65 R16 118R	Winter tyres on Steel	Continental	5mm / 5mm
2)	235/65 R16 118R	Winter tyres on Steel	Continental	6mm / 6mm

### Replacement

Typ	Tyre size	Type of tyre	Manufacturer	Tread depth
E	235/65 R16 115R	Summer tyres on Steel	Continental	7 mm

**Legend: Tread depth information for the left tire is listed first, for the right tire it is listed second on the axle in the direction of travel.**



## Equipment

### Standard equipment

- Driver's side airbag
- Exterior mirrors, electrically adjustable and heated
- On-board computer
- Double-leaf rear door with 180° opening angle (without window)
- Electronic Stability Program (ESP) with Traction Control System (TCS)
- Warranty: 2-year Ford new car warranty including Ford Assistance mobility guarantee
- Transmission: 6-speed transmission
- Interior lighting with delay circuit
- Paint finish: Solid color paint
- Cargo area floor: Vinyl floor covering "Easy Clean"
- MyKey key system
- Emergency brake assist including emergency brake light
- Particulate filter: diesel particulate filter
- Wheels: Steel wheels 6.5 J x 16 with 235/65 R 16 tires
- Sliding door entry light automatically illuminates when the door is opened
- Side protection strips
- Power steering
- Seats: Seat package 13
- Rear bumper with integrated step
- Partition wall (plastic) at the height of the B-pillar
- Immobiliser
- Central locking with remote control
- Front overhead storage compartment

### Extra equipment

- 2 batteries
- Fixed towbar
- Package: Visibility Package III (Trend, Limited) (Electrically folding exterior mirrors - Lane Keeping Assist with Driver Alert and High Beam Assist - Heated windscreen - High-mounted LED downlights - Adjustable instrument lighting - Front and rear parking sensors - Rearview camera with image transmission of the rearward driving path on the display - Windscreen wipers with rain sensor - Headlight assist with day/night sensor - Windscreen washer fluid level sensor)
- Wheels/Tires: Spare wheel, steel wheel
- Digital tachograph

- Anti-lock braking system with electronic brake force distribution (EBD)
- roof, middle
- Tachometer
- Third brake light
- Front electric windows
- Ford Easy Fuel
- Generator, high-performance version
- Cruise control including leather steering wheel
- Lockable glove compartment with lid
- Front air conditioning
- Cargo area lighting
- Steering column, adjustable in height and reach
- Fog light
- Front and rear parking pilot system
- Wheels: Wheel trims
- Headlights with static cornering lights
- Sliding door: Sliding door, right
- Rear mud flaps
- Side wall cladding up to the roof
- Seat belts
- Start-stop system
- Daytime running light
- Lashing eyes
- Heat-insulating glazing, lightly tinted
- Second key with remote control

- Airbag (passenger side)
- Package: Express Line (Plastic side wall cladding (4.8 mm) - Wooden floor in the cargo area (9 mm) - Airline rails on the side walls right and left at heights of 550/650 mm and 1575/1675 mm - 6 lashing eyes - Partition (plastic))
- Radio: Audio System 21: Ford audio system with 8" multifunction display (Connected Radio (AM/FM) - Digital radio reception DAB/ DAB+ (Digital Audio Broadcasting) - FordPass Connect Wi-Fi hotspot (up to 4G/LTE, for up to 10 mobile devices) - 8" TFT multifunction display (20.32 cm screen diagonal) - Four speakers, antenna - Integrated control panel and audio remote control on the steering wheel - Bluetooth interface - USB port - Hands-free system - Android Auto and Apple CarPlay support - Emergency Call Assistant)



## Brief expert findings

Documents submitted	At the time of the inspection, the vehicle registration certificate Part 2 (title) was available, but the vehicle registration certificate Part 1 (document) was not. (Copy)
VIN comparison	The vehicle identification number (VIN) was read from the vehicle and its conformity with the submitted documents was confirmed by the undersigned during the inspection.
Inspection	The inspection conditions were sufficient for the assessment of the vehicle. No lifting equipment or pit was available for inspecting the vehicle. Therefore, inspection of the vehicle's underside was only possible to a limited extent.
Test drive	No test drive/shunting maneuver was carried out during the inspection of the vehicle.
Engine function test	An engine test run was performed.

## Value reducing factors

No.	Component group	Description
1	Door - front right side	Door - dent(s) - Smooth repair work
2	Boot lid / rear door	Rear door - left side (Innenseite) - Scratched - Smart repair
3	Boot lid / rear door	Rear door - right side (Innenseite) - Scratched - Smart repair
4	Sliding door - left side	Sliding door (Mit Mehraufwand) - dent(s) - Smooth repair work

## Wear and tear

No.	Component group	Description
1	Bonnet	Bonnet - Stone chips - No deduction
2	Front bumper	Front bumper - Stone chips - No deduction
3	Rear bumper	Rear bumper - Scratch(es) - No deduction
4	Interior	Cargo area floor - Scratch(es) - No deduction

The vehicle shows signs of wear and tear commensurate with its age and use.

## Previous damages

No.	Previous damage	Extent of damage (Net)
1	Front, Provided by user / customer, from 25 Aug 2025	2.855,98 €

## Order/Scope of Order

An order was placed to prepare a sales report for the described vehicle. This report includes the following:

- Description of key vehicle information
- Documentation of equipment features  
*(Delivery by third-party service providers)*
- Documentation of damage, defects, missing parts
- Documentation of prior damage, unrepaired prior damage, repainting
- A brief visual or functional inspection of the equipment details, if possible.  
*(Functional testing of driver assistance systems is not included in the scope of services!)*
- a photographic documentation of the vehicle



## Basis for the order

This product is based on the guidelines for vehicle returns and valuations of light commercial vehicles published by Alphabet Fleet Management GmbH. The expert makes the specific findings in each individual case objectively, within the framework of the prescribed standards, based on their own expertise.

The vehicle inspection takes place in a fully assembled, unassembled state.

Damage or defects that can only be detected during disassembly/diagnostic work or through further investigation remain within the realm of prognostic risk. An increased risk exists due to concealed defects caused by fraudulent misrepresentation and which were not identifiable by the expert.

Damage or defects resulting from normal use or wear and tear of the vehicle will be accepted in accordance with the applicable standard.

There was no explicit identification or monetary consideration of the expected features within the product.

Features which, in their nature and extent, slightly exceed normal use but do not constitute unacceptable damage, will be documented and indicated as signs of wear, if applicable.

Damage or defects that, according to the applicable standard, can no longer be attributed to normal use or wear and tear are listed under "Value Reducing Factors" in the product description.

Depending on the product specification, a monetary ID can be provided. If this takes place, the costs can be 100% d or pro rata depending on the vehicle's age and mileage.

## Previous damages

According to available information previous damages were repaired at the vehicle. Traces of repairs, which allow conclusions about the area of repair, were not recognizable during the inspection.

## Comments

- Die Unterbodenbesichtigung war nur ebenerdig & eingeschränkt möglich. Mehrkosten möglich.
- Der angegebene Winterradsatz ist kein Bestandteil des Auslieferungsumfangs.



Figure 1: Diagonal front (left)



Figure 2: Diagonal front (right)



Figure 3: Diagonal rear (left)



Figure 4: Diagonal rear (right)

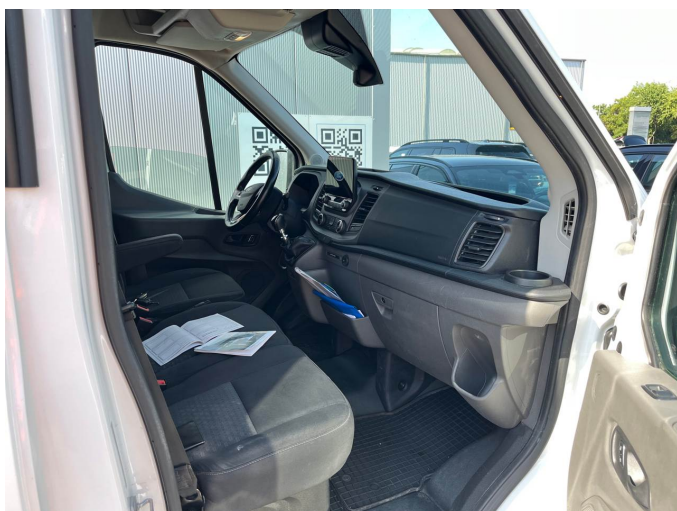


Figure 5: Interior - front



Figure 6: Interior - rear



Figure 7: Instrument cluster



Figure 8: Instrument panel



Figure 9: Interior 360° view



Figure 10: Cargo area



Figure 11: VIN



Figure 12: Mounted tyres



Figure 13: Documents



Figure 14: Documents

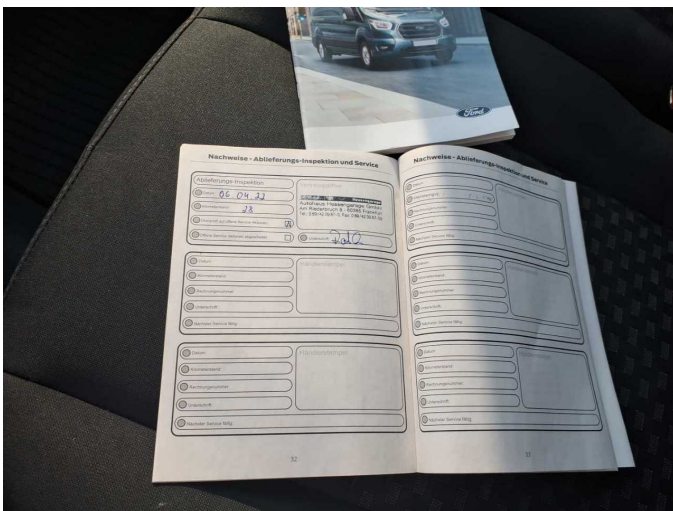


Figure 15: Documents



Figure 16: Additional tyres



Figure 17: Misc.



Figure 18: Misc.

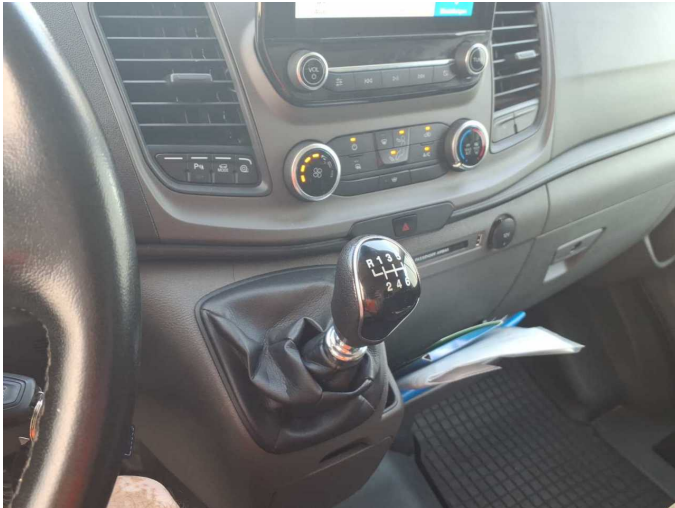


Figure 19: Misc.



Figure 20: Misc.



Figure 21: Misc.

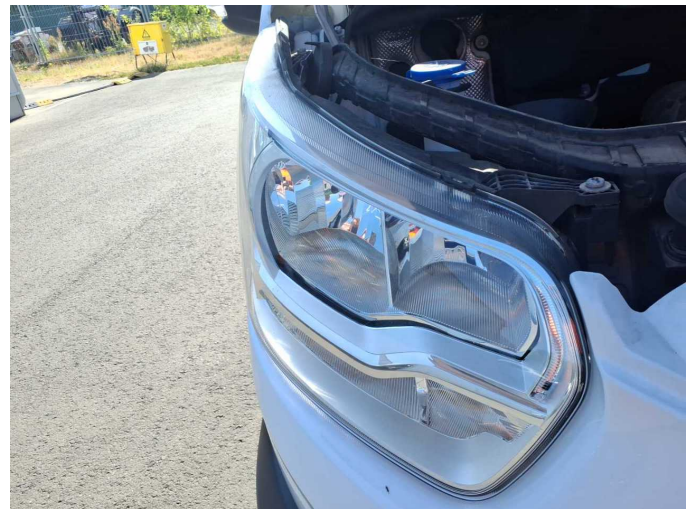


Figure 22: Misc.

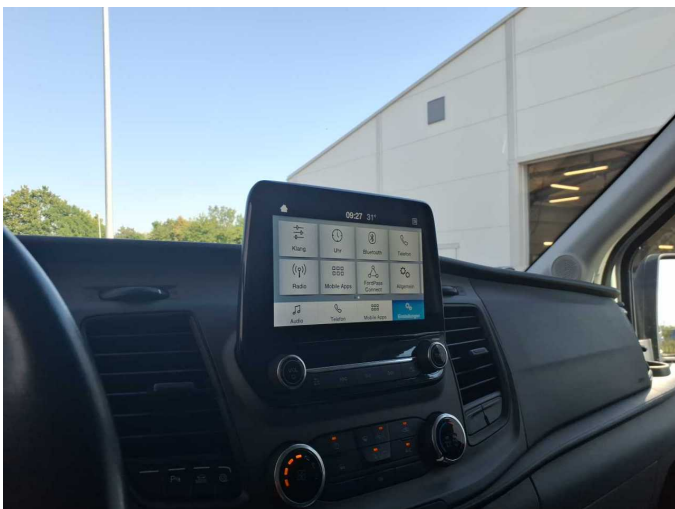


Figure 23: Misc.



Figure 24: Misc.



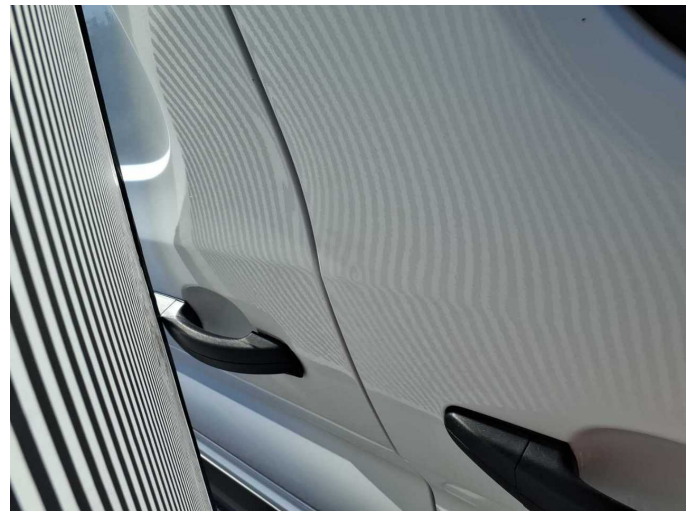
Figure 25: Misc.



Figure 26: Misc.



Damage 1: Door - front right side: Door - dent(s) - Smooth repair work



Damage 1: Door - front right side: Door - dent(s) - Smooth repair work



Damage 2: Boot lid / rear door: Rear door - left side (Innenseite) - Scratched - Smart repair



Damage 2: Boot lid / rear door: Rear door - left side (Innenseite) - Scratched - Smart repair



**Damage 3:** Boot lid / rear door: Rear door - right side (Innenseite) - Scratched - Smart repair



**Damage 3:** Boot lid / rear door: Rear door - right side (Innenseite) - Scratched - Smart repair



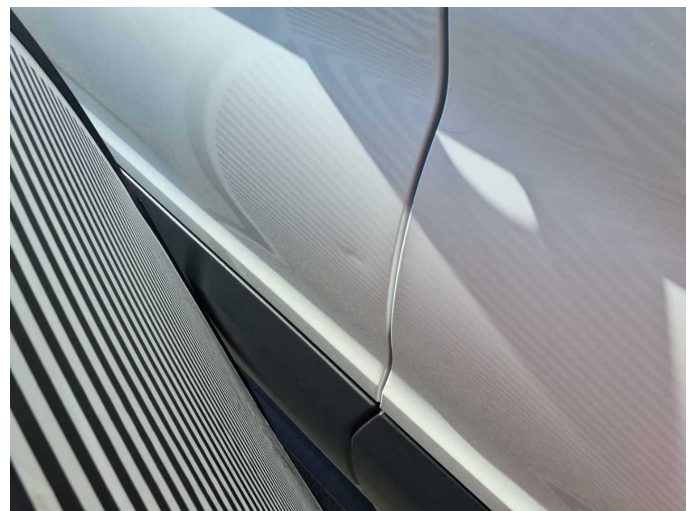
**Damage 3:** Boot lid / rear door: Rear door - right side (Innenseite) - Scratched - Smart repair



**Damage 4:** Sliding door - left side: Sliding door (Mit Mehraufwand) - dent(s) - Smooth repair work



**Damage 4:** Sliding door - left side: Sliding door (Mit Mehraufwand) - dent(s) - Smooth repair work



**Damage 4:** Sliding door - left side: Sliding door (Mit Mehraufwand) - dent(s) - Smooth repair work



# Wartungshistorie

(gemäß Auftraggeber Informationen)

Fahrgestellnummer: WF0EXXTTRENL01008  
Hersteller / Modell: FORD FORD Transit 350 L3H2 Lkw VA Trend

Datum	KM-Stand	Beschreibung
14.11.2025	133.320	Bremsbelagfühler ern; Bremsklötze hinten; Bremsklötze vorne
12.06.2025	116.791	Motoröl b. Wartung; Ölfilter ern; Ölwechsel
11.04.2024	79.463	Bremsbelagfühler ern; Bremse Sonstiges; Bremsklötze hinten; Bremsklötze vorne; Bremsscheiben + Klötze h; Bremsscheiben + Klötze v; Bremsscheiben hinten; Bremsscheiben vorne; Luftfiltereinsatz ern; Motoröl b. Wartung; Ölfilter ern; Regelwartungsdienst
06.06.2023	40.327	Bremsinspektion vo + hi; Bremsklötze hinten; Bremsklötze vorne; Motoröl b. Wartung; Ölfilter ern; Regelwartungsdienst