

## Expertise

Protocol number: 46088800  
Order No. / Reference: 26484716-1  
Inspection date: 17 Jun 2026

Manufacturer: Ford

Model: Transit Connect 1,5 I EcoBlue mit L1 Trend

VIN: WF06XXWPG6MP88333



### Vehicle details

#### Manufacturer / Type / Model / Equipment

Ford Transit Connect 1,5 I EcoBlue mit L1 Trend

**Vehicle Identification number** WF06XXWPG6MP88333

**Mileage (Read)** 156,853 km

**First registration** 21 Jul 2021

**Number of holders** 1

**Power / Engine displacement** 73 kw / 1,499 ccm

**Fuel type / Cylinder** Diesel / 4

**Gearbox / Number of gears** Manual / 6

**Type of drive** Front drive

**Type of vehicle** Station wagon

**Colour / colour code** Frozen White

**Doors / Seats** 5 / 5

**Upholstery type** Cloth

**Colour of upholstery** Black



## Vehicle details

<b>Maintenance booklet / proof</b>	digital evidence / incomplete	<b>Next maintenance in</b>	67 %
<b>Key is / should be</b>	3 / 3	<b>FZG documents</b>	ZB#2 (B) was available (copy), ZB#1 (S) was not available.
		<b>Letter No.</b>	GD527423
<b>Previous damage / Accident</b>	None detectable	<b>Repainting</b>	None detectable
<b>Inspection conditions</b>	sufficient	<b>Lifting equipment / pit</b>	yes
<b>Test drive</b>	Not performed	<b>Engine function test</b>	Performed
<b>Manufacturer key number/ type code number</b>	8566 / BUT 00142		
<b>Emission standard</b>	EURO6;WLTP;AP;PI/CI; M, N1 I	<b>fine dust sticker</b>	
<b>Permitted total weight</b>	2,390 kg	<b>Empty weight</b>	

## Tyres

### Mounted tyres

#	Tyre size	Type of tyre	Manufacturer	Tread depth
1)	215/55 R16 97V	All-season tyres on Steel rim with wheel cover	Sonstige	5mm / 5mm
2)	215/55 R16 97V	All-season tyres on Steel rim with wheel cover	Goodyear	5mm / 5mm

### Replacement

Typ	Tyre size	Type of tyre	Manufacturer	Tread depth
E	215/55 R16 97V	All-season tyres on Steel	Goodyear	6 mm

**Legend: Tread depth information for the left tire is listed first, for the right tire it is listed second on the axle in the direction of travel.**

TÜV SÜD Auto Partner GmbH  
Wiesenring 2  
04159 Leipzig

Inspection location  
Hartmann Fleet Professionals GmbH  
Leerenstraße 25  
29683 Bad Fallingbommel



## Equipment



## Standard equipment

- Anti-lock braking system (ABS) with electronic brake force distribution (EBD)
- Hill start assist
- Front overhead storage shelf (across the entire interior width (in Titanium models additionally with glasses storage compartment and interior mirror for eye contact with rear passengers))
- Lane keeping assist including lane keeping assist and driver fatigue warning
- Front electric windows with one-touch down function for the driver's side
- FordPass Connect including live traffic information and Wi-Fi hotspot (information about the current status or location of the vehicle as well as control of selected vehicle functions via smartphone with the FordPass app - Real-time traffic information - Wi-Fi hotspot (up to 4G/LTE7, for up to 10 mobile devices))
- Glove compartment with lid
- Interior lighting for passenger/cargo compartment
- Interior lighting front and rear with delay function
- Intelligent safety system (front airbag for driver and front passenger (including front passenger airbag deactivation function) - head and shoulder airbags in the front and for the outer seats of the second row, and in the Grand Tourneo also for the third row - side airbags for driver and front passenger - front seat belt tensioners and force limiters - safety pedals and steering column - point seat belts at all seats, height-adjustable in the front)
- Steering column, adjustable (adjustable in height and reach)
- Fog light
- Emergency brake light (hazard warning flashing activation during heavy braking)
- Pollen and dust filter
- Pollen filter and dust filter
- Pre-Collision Assist (camera-based, with pedestrian and cyclist detection: - Automatic Emergency Braking (AEB) - Dynamic Brake Support (DBS) - Forward Collision Warning (FCW) - Windscreen, acoustic laminated glass)
- Tire repair kit, space and weight saving (maximum speed of 80 km/h when used)
- Tire pressure monitoring system
- Sliding door, right and left
- Electro-mechanical power steering (EPAS - Electric Power Assisted Steering)
- Sun visor with mirror on driver and passenger side (for drivers with ticket holder)
- Concealed storage compartment on dashboard
- Power outlet: 12-volt connection on the center console, front and rear
- Front bumper painted in body color
- Carpet floor mats for the front (2-piece set)
- Traffic sign recognition system
- Immobilizer EPATS
- Heat-insulating glazing, lightly tinted
- Electrically adjustable and heated exterior mirrors
- Black exterior mirror caps (plastic)
- On-board computer (with fuel consumption, mileage information and outside temperature display)
- Diesel particulate filter (DPF)
- Third brake light
- Electronic Stability Program (ESP) (with Traction Control (TCS) including Torque Vectoring Control)
- Rear electric windows, right and left (at the height of the 2nd row of seats)
- Ford EcoSelect: a selectable driving mode (A driving mode selectable via a button, which enables more fuel-efficient driving)
- Removable luggage compartment cover
- Cruise control system (with intelligent speed limiter (camera-based) including traffic sign recognition system)
- Transmission: 6-speed manual transmission
- Rear swing door including heated rear window and wiper/washer system
- Intelligent battery management system
- Isofix mounting (outer seats of the 2nd row)
- Front air conditioning, manual, with semi-electronic recirculation function
- Rear headrests (3)
- Headrests 2 front, height adjustable
- Radiator grille with 5 crossbars, black plastic
- Paint finish: Solid
- Steering wheel: Multifunction leather steering wheel, 4 spokes (with aluminum-look inserts)
- Front center console, open, with storage space (for DIN A4-sized folders)
- Package: Seat Package 22 (Fabric, Capitol/City in Ebony (black) - Driver's seat, 3-way manually adjustable (forward/backward, height, backrest), with lumbar support - Single passenger seat, 2-way manually adjustable (forward/backward, backrest) and foldable - Map pocket for driver's seat)
- Radio equipment: Ford Audio System 2 (Radio (FM/AM) - USB port - Bluetooth interface - Hands-free system - Audio remote control on the steering wheel - 6 speakers - DAB/DAB+)
- Windscreen wipers with rain sensor
- Black plastic side protection strips
- Safety Brake Assist (EBA)
- Bench seat (in the 2nd row, 3 seats). 60:40 split, foldable.
- Front spoiler lip
- Start-stop system
- 12-volt socket in storage compartment on dashboard (driver's side)
- Rear bumper, black plastic
- Daytime running light
- Child safety lock on sliding doors
- Warning system for unfastened driver and front passenger seat belts



- Central locking with remote control (door lock only on driver's door) (automatic safety door locking)

### Extra equipment

- Fixed towbar
- Tires: 4 all-season tires 215/55 R 16
- Tires: Spare wheel, steel wheel (6.5 J x 16)
- Adaptive cruise control with intelligent speed limiter (Pre-Collision Assist, radar and camera-based, with pedestrian and cyclist detection2) - Lane Keeping Assist including Lane Departure Warning and Driver Alert - Leather multifunction steering wheel - Traffic Sign Recognition System)
- Safety partition net for separating passenger and luggage compartments (including attachment points)
- Auxiliary electric heater (PTC), front
- Exterior mirrors, electrically adjustable, heated and foldable
- Heated windshield
- Package: Smoker (cigarette lighter instead of the 12-volt socket at the front and ashtray)
- Rear parking pilot system
- Radio equipment: Ford Audio System 154 (4.2" non-chrome display (10.7 cm screen diagonal) - Radio (FM/AM) - USB port - Bluetooth interface - Hands-free system - 6 speakers - Emergency call assistant - Phase diversity antenna - DAB/DAB+)

### Brief expert findings

Documents submitted	At the time of the inspection, the vehicle registration certificate Part 2 (title) was available, but the vehicle registration certificate Part 1 (document) was not. (Copy)
VIN comparison	The vehicle identification number (VIN) was read from the vehicle and its conformity with the submitted documents was confirmed by the undersigned during the inspection.
Inspection	The inspection conditions were sufficient for the assessment of the vehicle. Lifting equipment and/or a pit were available for examining the vehicle.
Test drive	No test drive/shunting maneuver was carried out during the inspection of the vehicle.
Engine function test	An engine test run was performed.

### Value reducing factors

No.	Component group	Description
1	Wheel / tyres	Wheel cover - rear right side - Broken / torn - Replace
2	Wheel / tyres	Wheel cover - front left side - Missing - Replace
3	Sliding door - left side	Sliding door - dent(s) - Smooth repair work
4	Bonnet	Bonnet - dent(s) - Smooth repair work
5	Sill - left side	Sill - Scratch(es) - Smart repair
6	Sliding door, right	Sliding door - dent(s) - Smart repair
7	Engine	Engine - Leaking - Perform diagnosis
8	Body	Underbody panelling - Scratch(es) - Loss in value
9	Side panel - rear right side	Side panel - Dent / paintcoat damage - Smart repair
10	Trim / covers	Trim / covers - Differs from the original configuration - Replace
11	Trim / covers	Roof lining - Scratch(es) - Smart repair
12	Rear bumper	Rear bumper - Dent / paintcoat damage - Loss in value
13	Instrument panel	Centre console - front - Scratch(es) - Loss in value
14	Interior	Cargo area floor (Bodenbelag) - Broken / torn - Replace
15	Body	Body - Glued / labelled - De-glue / neutralise
16	Front bumper	Front bumper - Dent / paintcoat damage - Repair and paint
17	Boot lid / rear door	Boot lid - Dent / paintcoat damage - Repair and paint
18	Vehicle glazing	Windscreen (kein Staubschutz) - Stone chips - Replace



## Wear and tear

No.	Component group	Description
1	Body	A-pillar - right side - Scratch(es) - Smart repair
2	Trim / covers	Boot lining - Scratch(es) - No deduction

The vehicle shows signs of wear and tear commensurate with its age and use.

## Order/Scope of Order

An order was placed to prepare a sales report for the described vehicle. This report includes the following:

- Description of key vehicle information
- Documentation of equipment features  
(*Delivery by third-party service providers*)
- Documentation of damage, defects, missing parts
- Documentation of prior damage, unrepaired prior damage, repainting
- A brief visual or functional inspection of the equipment details, if possible.  
(*Functional testing of driver assistance systems is not included in the scope of services!*)
- a photographic documentation of the vehicle

## Basis for the order

This product is based on the guidelines for vehicle returns and valuations published by Alphabet Fleet GmbH. The expert makes the specific findings in each individual case objectively, within the framework of the prescribed standards, based on their own expertise.

The vehicle inspection takes place in a fully assembled, unassembled state.

Damage or defects that can only be detected during disassembly/diagnostic work or through further investigation remain within the realm of prognostic risk. An increased risk exists due to concealed defects caused by fraudulent misrepresentation and which were not identifiable by the expert.

Damage or defects resulting from normal use or wear and tear of the vehicle will be accepted in accordance with the applicable standard.

There was no explicit identification or monetary consideration of the expected features within the product.

Features which, in their nature and extent, slightly exceed normal use but do not constitute unacceptable damage, will be documented and indicated as signs of wear, if applicable.

Damage or defects that, according to the applicable standard, can no longer be attributed to normal use or wear and tear are listed under "Value Reducing Factors" in the product description.

Depending on the product specification, a monetary ID can be provided. If this takes place, the costs can be 100% d or pro rata depending on the vehicle's age and mileage.

## Previous damages

No apparent prior damage that had been repaired could be found on the vehicle.

## Comments

Die Wartungshistorie ist nicht vorhanden und kann somit nicht auf Vollständigkeit geprüft werden.

Fahrzeug ist lt. Rechnung ein: Transit Connect 1,5 l EcoBlue mit L1 Trend



Figure 1: Diagonal front (left)



Figure 2: Diagonal front (right)



Figure 3: Diagonal rear (left)



Figure 4: Diagonal rear (right)



Figure 5: Interior - front

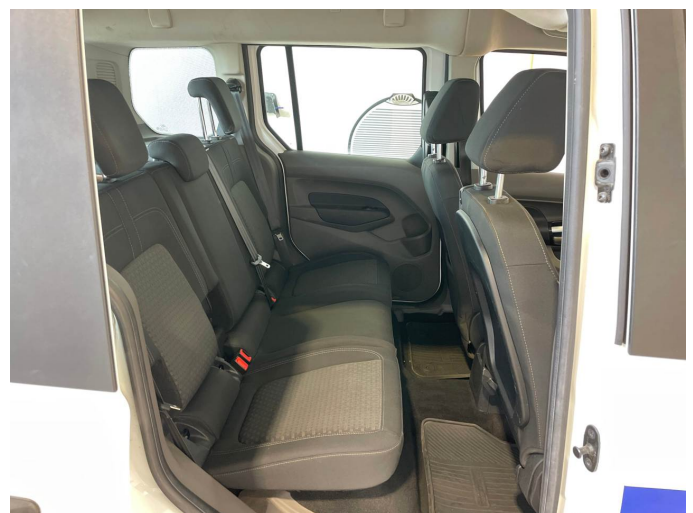


Figure 6: Interior - rear



Figure 7: Instrument cluster



Figure 8: Instrument panel

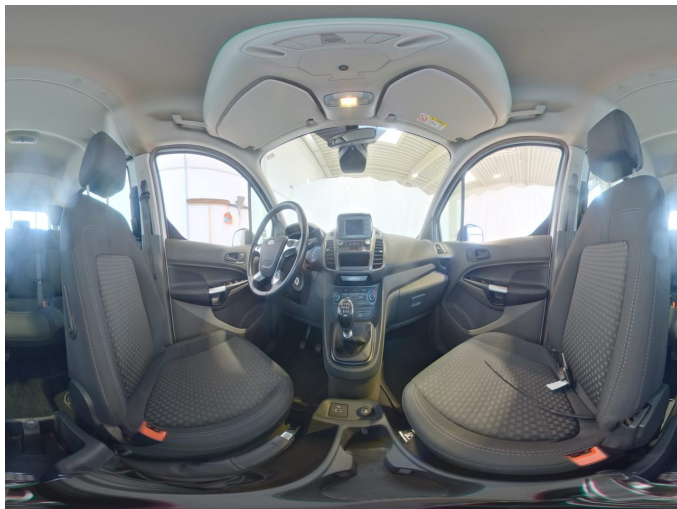


Figure 9: Interior 360° view



Figure 10: Cargo area



Figure 11: VIN



Figure 12: Mounted tyres





Figure 19: Misc.



Figure 20: Misc.



Figure 21: Misc.



Figure 22: Misc.



Figure 23: Misc.



Figure 24: Misc.



Figure 25: Misc.



Figure 26: Misc.



Figure 27: Misc.



Figure 28: Misc.

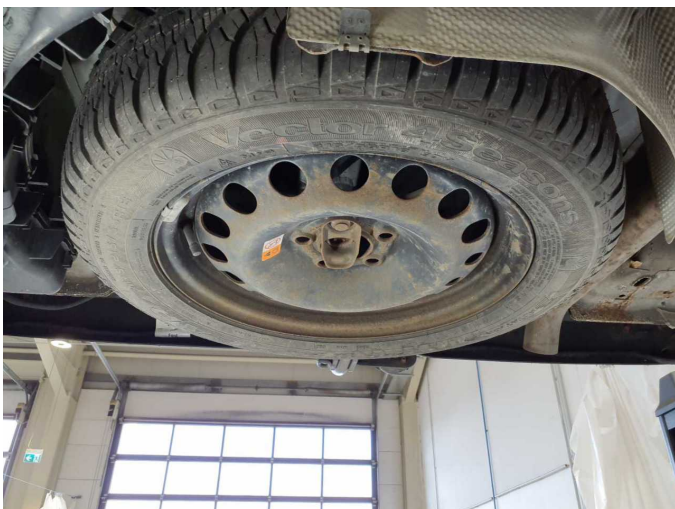


Figure 29: Misc.



Figure 30: Misc.



**Damage 1:** Wheel / tyres: Wheel cover - rear right side - Broken / torn - Replace



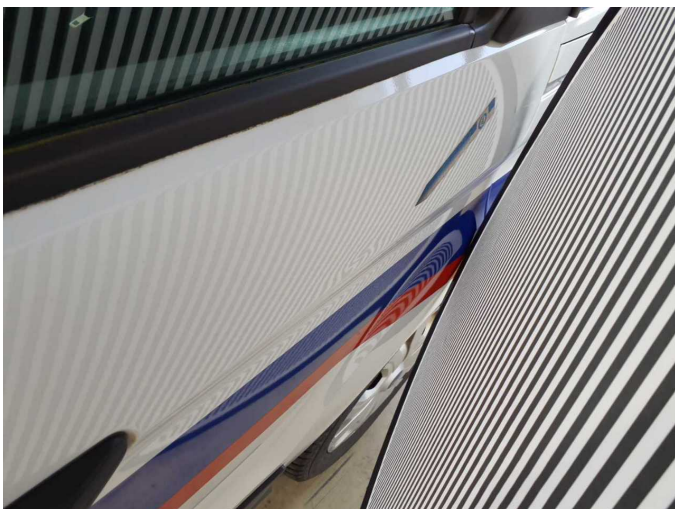
**Damage 1:** Wheel / tyres: Wheel cover - rear right side - Broken / torn - Replace



**Damage 2:** Wheel / tyres: Wheel cover - front left side - Missing - Replace



**Damage 3:** Sliding door - left side: Sliding door - dent(s) - Smooth repair work



**Damage 3:** Sliding door - left side: Sliding door - dent(s) - Smooth repair work



**Damage 4:** Bonnet: Bonnet - dent(s) - Smooth repair work



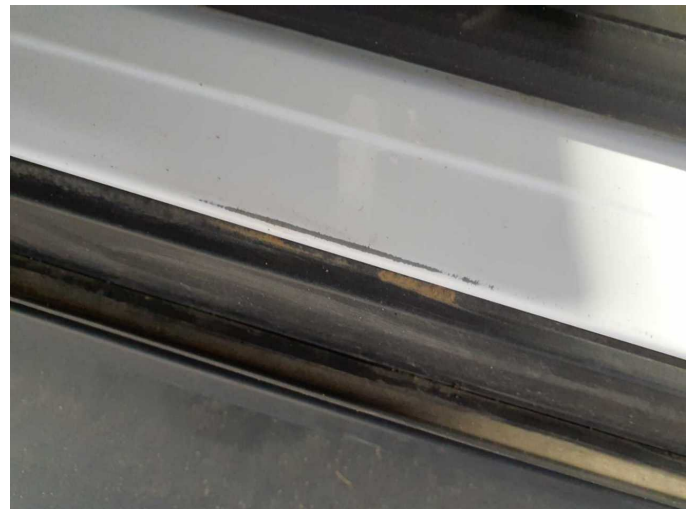
**Damage 4:** Bonnet: Bonnet - dent(s) - Smooth repair work



**Damage 4:** Bonnet: Bonnet - dent(s) - Smooth repair work



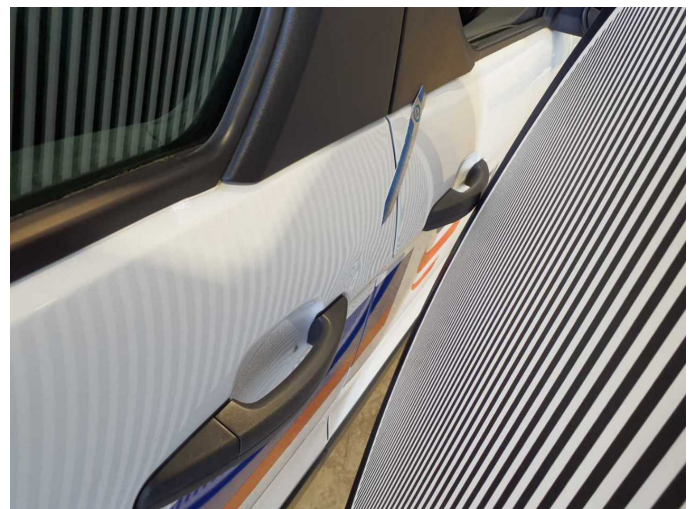
**Damage 5:** Sill - left side: Sill - Scratch(es) - Smart repair



**Damage 5:** Sill - left side: Sill - Scratch(es) - Smart repair



**Damage 6:** Sliding door, right: Sliding door - dent(s) - Smart repair



**Damage 6:** Sliding door, right: Sliding door - dent(s) - Smart repair



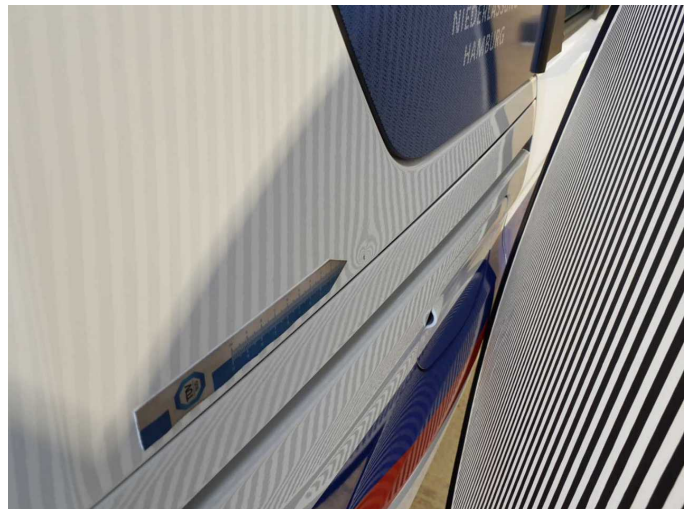
**Damage 7:** Engine: Engine - Leaking - Perform diagnosis



**Damage 8:** Body: Underbody panelling - Scratch(es) - Loss in value



**Damage 9:** Side panel - rear right side: Side panel - Dent / paintcoat damage - Smart repair



**Damage 9:** Side panel - rear right side: Side panel - Dent / paintcoat damage - Smart repair



**Damage 10:** Trim / covers: Trim / covers - Differs from the original configuration - Replace



**Damage 11:** Trim / covers: Roof lining - Scratch(es) - Smart repair



**Damage 11:** Trim / covers: Roof lining - Scratch(es) - Smart repair



**Damage 12:** Rear bumper: Rear bumper - Dent / paintcoat damage - Loss in value



**Damage 12:** Rear bumper: Rear bumper - Dent / paintcoat damage - Loss in value



**Damage 12:** Rear bumper: Rear bumper - Dent / paintcoat damage - Loss in value



**Damage 12:** Rear bumper: Rear bumper - Dent / paintcoat damage - Loss in value



**Damage 13:** Instrument panel: Centre console - front - Scratch(es) - Loss in value



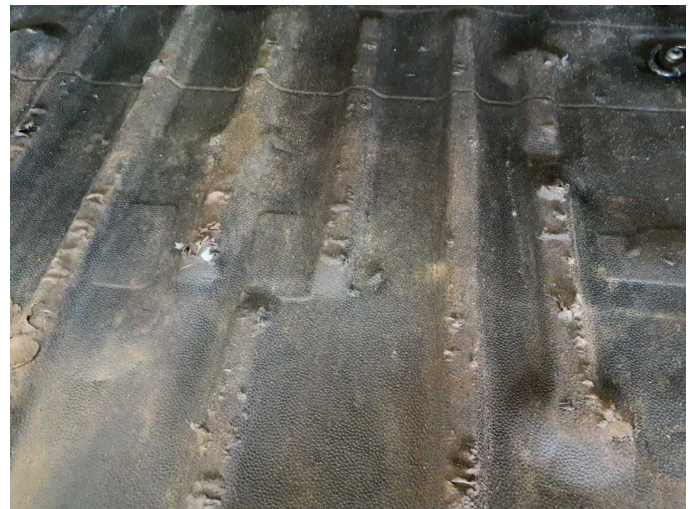
**Damage 13:** Instrument panel: Centre console - front - Scratch(es) - Loss in value



**Damage 13:** Instrument panel: Centre console - front - Scratch(es) - Loss in value



**Damage 14:** Interior: Cargo area floor (Bodenbelag) - Broken / torn - Replace



**Damage 14:** Interior: Cargo area floor (Bodenbelag) - Broken / torn - Replace



**Damage 15:** Body: Body - Glued / labelled - De-glue / neutralise



**Damage 15:** Body: Body - Glued / labelled - De-glue / neutralise



**Damage 16:** Front bumper: Front bumper - Dent / paintcoat damage - Repair and paint



**Damage 16:** Front bumper: Front bumper - Dent / paintcoat damage - Repair and paint



**Damage 16:** Front bumper: Front bumper - Dent / paintcoat damage - Repair and paint



**Damage 16:** Front bumper: Front bumper - Dent / paintcoat damage - Repair and paint



**Damage 16:** Front bumper: Front bumper - Dent / paintcoat damage - Repair and paint



**Damage 17:** Boot lid / rear door: Boot lid - Dent / paintcoat damage - Repair and paint



**Damage 17:** Boot lid / rear door: Boot lid - Dent / paintcoat damage - Repair and paint



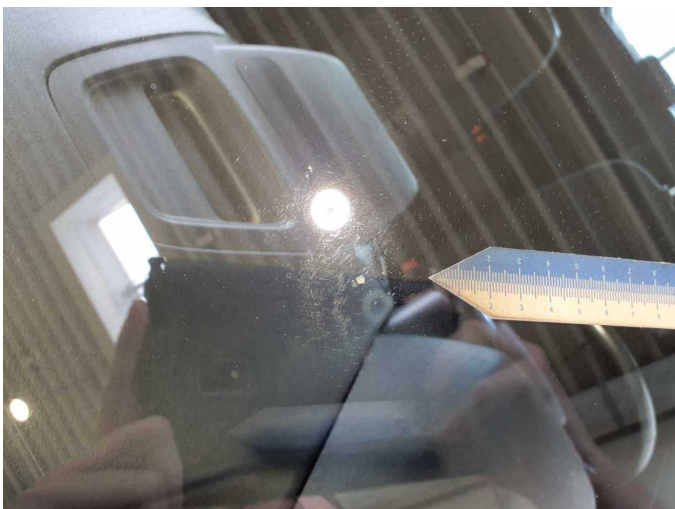
**Damage 17:** Boot lid / rear door: Boot lid - Dent / paintcoat damage - Repair and paint



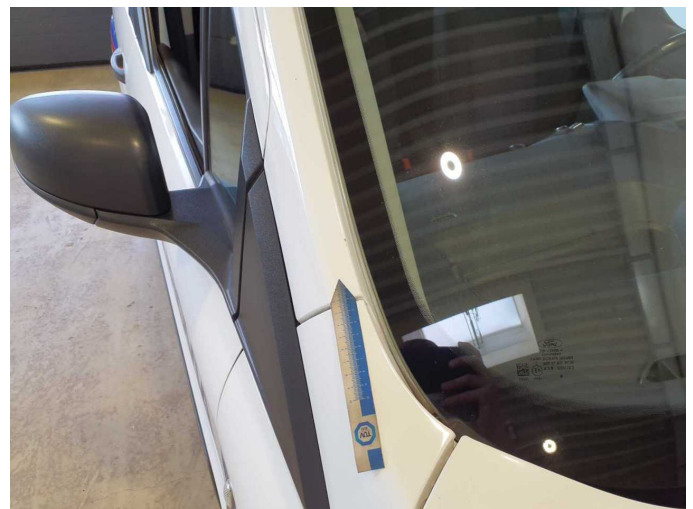
**Damage 17:** Boot lid / rear door: Boot lid - Dent / paintcoat damage - Repair and paint



**Damage 18:** Vehicle glazing: Windscreen (kein Staubschutz) - Stone chips - Replace



**Damage 18:** Vehicle glazing: Windscreen (kein Staubschutz) - Stone chips - Replace



**Wear and tear 1:** Body: A-pillar - right side - Scratch(es) - Smart repair



**Wear and tear 1:** Body: A-pillar - right side - Scratch(es) - Smart repair



**Wear and tear 2:** Trim / covers: Boot lining - Scratch(es) - No deduction



**Wear and tear 2:** Trim / covers: Boot lining - Scratch(es) - No deduction



**Wear and tear 2:** Trim / covers: Boot lining - Scratch(es) - No deduction