

Expertise

Protocol number: 46361389
Order No. / Reference: 26671868
Inspection date: 7 Jul 2026

Manufacturer: Mercedes-Benz

Model: GLB 220 d 8G-DCT AMG Line

VIN: W1N4M1EB4PW300050



Vehicle details

Manufacturer / Type / Model / Equipment

Mercedes-Benz GLB 220 d 8G-DCT AMG Line

Vehicle Identification number W1N4M1EB4PW300050

Mileage (Read) 43,307 km

First registration 12 Jun 2023

Number of holders 1

Power / Engine displacement 140 kw / 1,950 ccm

Fuel type / Cylinder Diesel / 4

Gearbox / Number of gears Automatic / 8

Type of drive Front drive

Type of vehicle SUV

Colour / colour code MOUNTAINGRAU

Doors / Seats 5 / 5

Upholstery type Alcantara / Leather

Colour of upholstery Black-Anthracite

Vehicle with smoke odor no



Vehicle details			
Maintenance booklet / proof	digital evidence / incomplete	Next maintenance in	-30 Tag(e)
Last service on / at	05/2025 at 29,458 km		
Key is / should be	2 / 2	FZG documents	ZB#2 (B) was available (copy), ZB#1 (S) was not available.
		Letter No.	GV667201
Previous damage / Accident	None detectable	Repainting	None detectable
Inspection conditions	sufficient	Lifting equipment / pit	yes
Test drive	Not performed	Engine function test	Performed
Manufacturer key number/ type code number	2222 / ASE 00153		
Emission standard	EURO6;WLTP;AP;PI/CI; M, N1 I	fine dust sticker	
Permitted total weight	2,195 kg	Empty weight	

Tyres

Mounted tyres				
#	Tyre size	Type of tyre	Manufacturer	Tread depth
1)	235/50 R19 99W	Summer tyres on Light alloy	Pirelli	6mm / 6mm
2)	235/50 R19 99W	Summer tyres on Light alloy	Pirelli	7mm / 7mm
Additional tyres				
#	Tyre size	Type of tyre	Manufacturer	Tread depth
1)	235/50 R19 99H	Winter tyres on Light alloy	Pirelli	7mm / 7mm
2)	235/50 R19 99H	Winter tyres on Light alloy	Pirelli	7mm / 7mm

Legend: Tread depth information for the left tire is listed first, for the right tire it is listed second on the axle in the direction of travel.

TÜV SÜD Auto Partner GmbH
Wiesenring 2
04159 Leipzig

Inspection location
ARS Altmann AG Niederlassung
Wolnzach
Feierabendmühle 2
85283 Wolnzach



Equipment



Standard equipment

- Active Lane Keeping Assist
- Airbag: Sidebag for driver and front passenger (combined thorax/pelvisbag)
- AMG sports pedal assembly (made of brushed stainless steel with rubber studs)
- Anti-lock braking system (ABS)
- Automatic passenger airbag deactivation
- Cargo area cover (roller blind) (stores under the cargo floor)
- Chassis: Comfort chassis
- Climate: THERMATIC automatic climate control (1-zone climate control - automatically controlled air distribution - recirculation function - tunnel mode in conjunction with navigation system - fine dust filter)
- Cruise control (Drive relaxed and fuel-efficiently, especially on longer journeys. Simply select your desired speed and your vehicle will regulate it. In addition to the cruising speed, the speed limiter helps you maintain a maximum speed. This increases road safety and protects you from expensive speeding tickets.)
- Door sills with "Mercedes-Benz" lettering
- Double cup holder
- ECO start/stop function
- Electric window regulators (4)
- Electronic Stability Program (ESP)
- Headrests (2)
- Heated exterior mirrors on the left and right, electrically adjustable from the inside (with aspherically curved mirror glass and integrated turn signal light)
- Interior headliner fabric crystal grey
- Luggage net on driver and passenger seatbacks
- Mercedes-Benz Emergency Call System (The Mercedes-Benz Emergency Call System can provide a crucial time advantage in an emergency. A communication module with its own SIM card automatically triggers an emergency call upon detection of an accident, which can shorten the time until emergency services arrive. The emergency call can also be triggered manually to organize assistance.)
- Package: Light and Sight Package (Overhead control unit with 4 light elements (including glasses compartment) - Interior light/reading light rear in mounting plate (rear/left/right) - Touchpad lighting (front) - Reading lights (front/left/right), console ambient light - Make-up lights (front/left/right) - Signal and ambient light - Exit signal light (front/left/right) - Footwell lighting (front/left/right) - Cupholder/storage compartment lighting - Occasional storage compartment lighting)
- Paint finish: Solid
- Power steering
- 12V power outlet in center console
- Active Brake Assist
- Airbag for driver and front passenger
- Airbag: Kneebag for driver
- Airbag: Windowbags
- AMG floor mats (in black with "AMG" lettering)
- AMG Styling (AMG front apron with chrome front splitter - AMG rear apron with diffuser look - chrome trim element and two visible tailpipe trims)
- ATTENTION ASSIST (can detect typical signs of fatigue via steering behavior and can warn the driver of impending microsleep)
- Brake assist
- Communication module (LTE) for the use of Mercedes me connect services (communication module with permanently installed SIM card of the mobile communications standard LTE - two mobile communications antennas)
- Decorative elements carbon structure
- Diesel particulate filter
- DYNAMIC SELECT (Simply drive the way you want. At the touch of a button, DYNAMIC SELECT offers various driving programs that predefine, for example, the engine, transmission, suspension, or steering. Sport mode provides a decidedly dynamic driving experience, while the basic Comfort program offers a very balanced ride. ECO mode, on the other hand, prioritizes maximum efficiency, saving fuel and money.)
- Fuel tank with larger volume 60 l
- Halogen headlights including integrated LED daytime running lights
- High-visibility vest for drivers
- Immobiliser
- KEYLESS-GO start function
- Loading floor height-adjustable and removable
- Navigation accessories: Extended MBUX functions (personalization (profiles) and prediction functions - LINGUATRONIC with natural language understanding - activation via "Hey Mercedes" - Wi-Fi hotspot - internet radio)
- On-board computer
- Package: Seating comfort (height adjustment for passenger seat - seat cushion tilt adjustment for driver and passenger seats - seat cushion depth adjustment for improved seating comfort through a 60 mm wider thigh support area - specific seat design)
- Radio accessories: Digital radio
- Radio accessories: Touchpad (integrated into the center console, including a hand rest - single and multi-finger gestures, swiping movements and zoom gestures by spreading and pinching the fingers - recognizes handwritten characters: letters, special characters and numbers - clear haptic feedback)
- Rain and light sensor
- Rear window heated
- rear window wiper



- Radio: MBUX multimedia system (instrument display with 17.78 cm (7") diagonal - media display with 17.78 cm (7") diagonal and touch function - touch control buttons on the steering wheel - radio (FM/AM) - USB interface in the center console under the armrest - Bluetooth telephony with contact transfer and audio streaming of music data - display of vehicle functions (driver assistance system, driving programs and vehicle settings) - favorites memory - smartphone-related voice control - activated by long press on the voice button on the steering wheel)
 - Rear armrest
 - Rear headrests (3)
 - Roof rails in polished aluminum
 - Seats: Rear seat backrests foldable (in a 40/20/40 ratio and adjustable to 7 tilt positions)
 - Speed Limit Assist (The Speed Limit Assist makes it easy for you to comply with the regulations and avoid unnecessary speeding tickets. The system shows what is permitted: It can detect the current speed limit via the camera and display it in the instrument cluster. Additional restrictive signs for special weather conditions such as wet conditions are also detected.)
 - Steering column mechanically adjustable lengthwise and heightwise.
 - Third brake light in LED technology
 - Wheels: 48.3 cm (19") AMG light-alloy wheels, 4-piece set in 5-twin-spoke design (aerodynamically optimized, painted tantalum grey and polished, 235/50 R19 with 7.5 J x 19 ET 53)
 - Windscreen wipers with rain sensor
- Remote Services Plus (The Remote Services Plus package transforms mobility into a new experience, offering greater comfort and safety. Status queries provide information about the remaining range. You can remotely control certain functions and locate your vehicle. Services such as maintenance management coordinate service appointments, saving you valuable time.)
 - Seats: Sports seats (with adjustable headrest)
 - Steering wheel: Multifunction sports steering wheel in Nappa leather (The multifunction sports steering wheel in Nappa leather with chrome control panels is flattened at the bottom and perforated in the grip area – an excellent choice for sporty driving. Among other things, the touch control buttons on the left and right operate a variety of functions, including navigation, telephony, and entertainment. Last but not least, you can also set the cruise control and distance control: everything under control without taking your hands off the steering wheel.)
 - Tachometer
 - Tire pressure monitoring system (TPMS)
 - Transmission: 8G-DCT dual-clutch automatic transmission, 8-speed
 - Upholstery: ARTICO leatherette/MICROCUT microfiber



Extra equipment

- Towbar with ESP trailer stabilization
- Paint finish: Metallic
- Package: ENERGIZING Package Plus in conjunction with Business Package (Advanced sound system with 10 speakers and 225 watts system power - Heated seats for driver and front passenger - Ambient lighting - THERMOTRONIC automatic climate control - Freshness, vitality, training: video instructions - Tips: 3-minute audio information for the sustainable promotion of health and well-being in everyday life - for the body regions head, shoulders, upper body, lower back and pelvis - electrically adjustable lumbar support)
- Package: Parking package with 360° camera (Active Parking Assist including PARKTRONIC with visual and acoustic warnings of detected obstacles, notification of detected parking spaces in the instrument cluster via arrow display, convenient parking in and out of parallel and perpendicular parking spaces - 360° camera with four networked close-range cameras in the radiator grille, in the tailgate release handle and in the exterior mirror housings, displaying all four sides of the vehicle and visualizing the vehicle and its surroundings from a bird's-eye view in the multimedia system display)
- Radio accessories: Advanced sound system
- Wheels: 48.3 cm (19") AMG light-alloy wheels, 4-piece set in 5-twin-spoke design (aerodynamically optimized, painted in high-gloss black and polished, 235/50 R19 with 7.5 J x 19 ET 53)
- Seats: Front right seat electrically adjustable with memory function (memory programming with seat adjustment options such as height and longitudinal direction, seat cushion tilt and backrest tilt - Motion Seating with three programs and two speeds)
- Phone accessories: Wireless charging system for mobile devices
- Blind Spot Assist
- Black fabric headliner
- Package: Business (Hard drive navigation - Smartphone integration - Traffic sign assistant - Preparation for digital key handover - Connectivity package navigation - Seat heating for driver and front passenger - Parking assistant with PARKTRONIC - Preparation for live traffic information)
- Package: Cargo area (12V socket - reversible mat - nets on the left and right sides (left net is omitted in conjunction with 3rd row of seats for 2 persons (847)) - open compartment under net on the left - tension straps on the left and right sides - chrome loading sill protector)
- Package: MBUX High-End Package (Hard drive navigation - Smartphone integration - Wireless charging system for mobile devices - Preparation for digital key handover - Connectivity package navigation - Central Media Display 10.25" - Fully digital instrument display with high-resolution 10.25" display - MBUX Augmented Reality for navigation - Traffic sign assistant - Preparation for live traffic information)
- Package: Mirror package (Exterior mirrors electrically fold in and out via a button in the driver's door control panel - the menu allows you to set the exterior mirrors to fold in automatically when locking the vehicle and unfold again when unlocking - the exterior mirror on the driver's side and the interior mirror dim automatically and continuously depending on the incident glare and ambient light)
- Seats: 4-way lumbar support for driver and front passenger
- Seats: Electrically adjustable driver's seat with memory function in conjunction with the mirror package (the memory programming includes all seat adjustment options such as seat height and fore/aft position, seat cushion tilt, and backrest tilt – exterior mirrors and the optional head-up display are also integrated – dynamic seating while driving. Small movements of the seat cushion and backrest in three programs and two speeds).
- Heat-insulating dark tinted glass

Brief expert findings

Documents submitted	At the time of the inspection, the vehicle registration certificate Part 2 (title) was available, but the vehicle registration certificate Part 1 (document) was not. (Copy)
VIN comparison	The vehicle identification number (VIN) was read from the vehicle and its conformity with the submitted documents was confirmed by the undersigned during the inspection.
Inspection	The inspection conditions were sufficient for the assessment of the vehicle. Lifting equipment and/or a pit were available for examining the vehicle.
Test drive	No test drive/shunting maneuver was carried out during the inspection of the vehicle.
Engine function test	An engine test run was performed.



Value reducing factors

No.	Component group	Description
1	Sill - left side	Sill - dent(s) - Smooth repair work
2	Front bumper	Cover bumper - front - Scratched - Replace
3	Misc.	Inspection / maintenance - Due - Perform
4	Rear bumper	Rear bumper - Scratch(es) - Paint
5	Door - rear right side	Door - Dent / paintcoat damage - Repair and paint

Wear and tear

No.	Component group	Description
1	Door - front left side	Door edge - Scratch(es) - No deduction
2	Bonnet	Bonnet - dent(s) - No deduction

The vehicle shows signs of wear and tear commensurate with its age and use.

Order/Scope of Order

An order was placed to prepare a sales report for the described vehicle. This report includes the following:

- Description of key vehicle information
- Documentation of equipment features
(Delivery by third-party service providers)
- Documentation of damage, defects, missing parts
- Documentation of prior damage, unrepaired prior damage, repainting
- A brief visual or functional inspection of the equipment details, if possible.
(Functional testing of driver assistance systems is not included in the scope of services!)
- a photographic documentation of the vehicle

Basis for the order

This product is based on the guidelines for vehicle returns and valuations published by Alphabet Fleet GmbH. The expert makes the specific findings in each individual case objectively, within the framework of the prescribed standards, based on their own expertise.

The vehicle inspection takes place in a fully assembled, unassembled state.

Damage or defects that can only be detected during disassembly/diagnostic work or through further investigation remain within the realm of prognostic risk. An increased risk exists due to concealed defects caused by fraudulent misrepresentation and which were not identifiable by the expert.

Damage or defects resulting from normal use or wear and tear of the vehicle will be accepted in accordance with the applicable standard.

There was no explicit identification or monetary consideration of the expected features within the product.

Features which, in their nature and extent, slightly exceed normal use but do not constitute unacceptable damage, will be documented and indicated as signs of wear, if applicable.

Damage or defects that, according to the applicable standard, can no longer be attributed to normal use or wear and tear are listed under "Value Reducing Factors" in the product description.

Depending on the product specification, a monetary ID can be provided. If this takes place, the costs can be 100% d or pro rata depending on the vehicle's age and mileage.

Previous damages

No apparent prior damage that had been repaired could be found on the vehicle.



Comments

- Der beiliegende Winterradsatz ist kein Bestandteil des Auslieferungsumfangs.



Figure 1: Diagonal front (left)



Figure 2: Diagonal front (right)



Figure 3: Diagonal rear (left)



Figure 4: Diagonal rear (right)



Figure 5: Interior - front

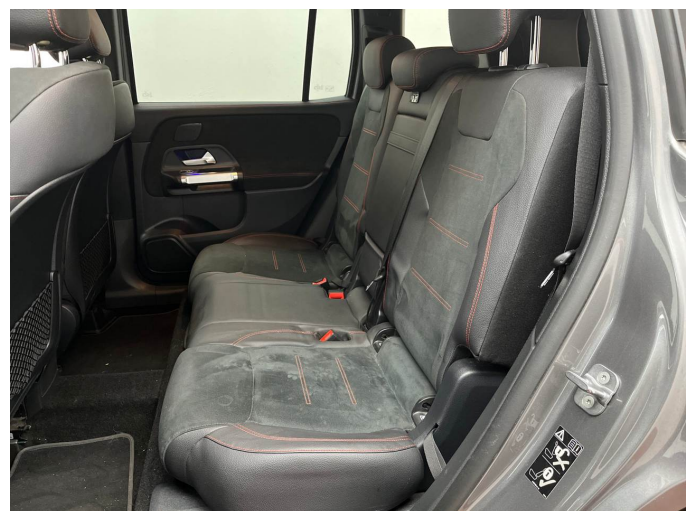


Figure 6: Interior - rear



Figure 7: Instrument cluster



Figure 8: Instrument panel



Figure 9: Interior 360° view



Figure 10: Cargo area



Figure 11: VIN



Figure 12: Mounted tyres



Figure 13: Documents



Figure 14: Documents



Figure 15: Additional tyres



Figure 16: Navigation



Figure 17: Misc.



Figure 18: Misc.



Figure 19: Misc.



Figure 20: Misc.

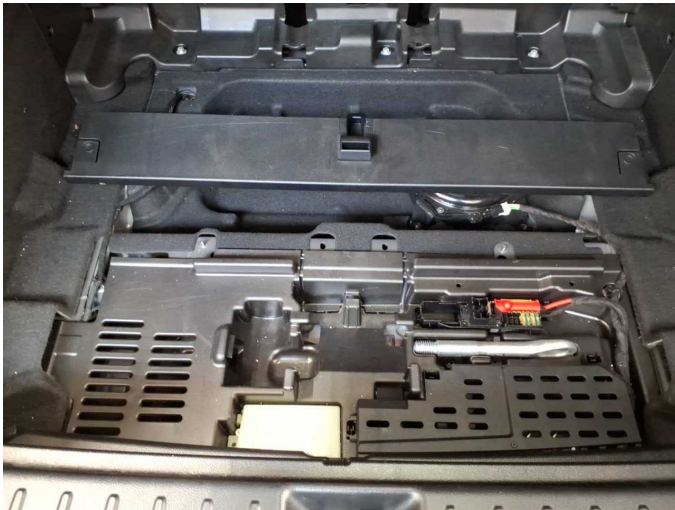


Figure 21: Misc.



Figure 22: Misc.



Figure 23: Misc.



Figure 24: Misc.



Figure 25: Misc.



Figure 26: Misc.



Figure 27: Misc.



Figure 28: Misc.



Figure 29: Misc.

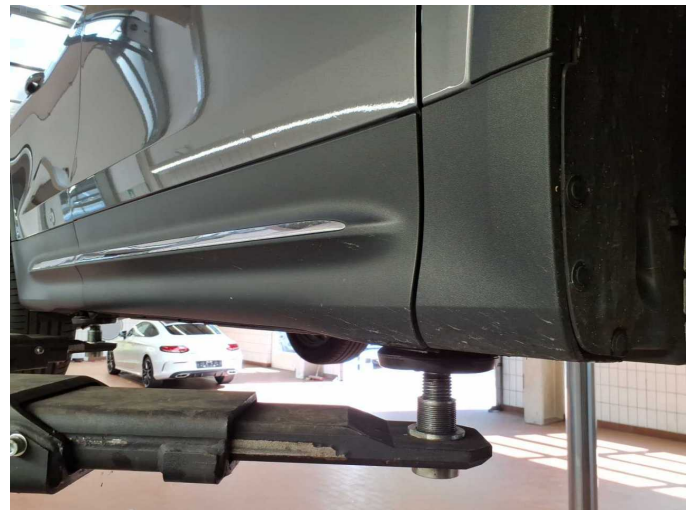


Figure 30: Misc.



Damage 1: Sill - left side: Sill - dent(s) - Smooth repair work



Damage 1: Sill - left side: Sill - dent(s) - Smooth repair work



Damage 2: Front bumper: Cover bumper - front - Scratched - Replace



Damage 2: Front bumper: Cover bumper - front - Scratched - Replace



Damage 3: Misc.: Inspection / maintenance - Due - Perform



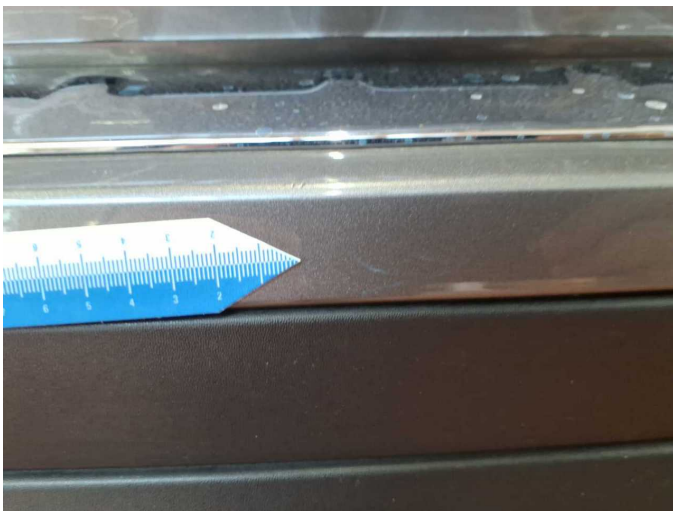
Damage 4: Rear bumper: Rear bumper - Scratch(es) - Paint



Damage 4: Rear bumper: Rear bumper - Scratch(es) - Paint



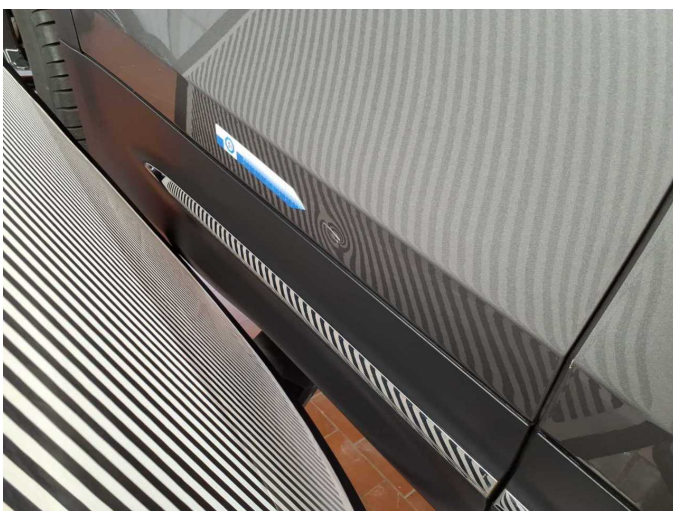
Damage 4: Rear bumper: Rear bumper - Scratch(es) - Paint



Damage 4: Rear bumper: Rear bumper - Scratch(es) - Paint



Damage 4: Rear bumper: Rear bumper - Scratch(es) - Paint



Damage 5: Door - rear right side: Door - Dent / paintcoat damage - Repair and paint



Damage 5: Door - rear right side: Door - Dent / paintcoat damage - Repair and paint



Damage 5: Door - rear right side: Door - Dent / paintcoat damage -
Repair and paint



Wartungshistorie

(gemäß Auftraggeber Informationen)

Fahrgestellnummer: W1N4M1EB4PW300050

Hersteller / Modell: MERCEDES-BENZ MERCEDES-BENZ GLB 220 d 8G-DCT AMG
Line

Datum	KM-Stand	Beschreibung
30.10.2025	35.813	Systemtest/Eigendiagnose
27.05.2025	29.458	Regelwartungsdienst
10.06.2024	15.746	Regelwartungsdienst