

## Expertise

Protocol number: 46129742  
Order No. / Reference: 26550734  
Inspection date: 24 Jun 2026

Manufacturer: Audi

Model: A5 Sportback 40 TDI quattro S tronic S line

VIN: WAUZZZF50PA019346



### Vehicle details

#### Manufacturer / Type / Model / Equipment

Audi A5 Sportback 40 TDI quattro S tronic S line

<b>Vehicle Identification number</b>	WAUZZZF50PA019346
<b>Mileage (Read)</b>	50,385 km
<b>First registration</b>	28 Nov 2022
<b>Number of holders</b>	1
<b>Next periodical technical inspection</b> (Report on hand)	11/2027

<b>Power / Engine displacement</b>	150 kw / 1,968 ccm
------------------------------------	--------------------

<b>Fuel type / Cylinder</b>	Hybrid Diesel / E / 4
-----------------------------	-----------------------

<b>Gearbox / Number of gears</b>	Automatic / 7
----------------------------------	---------------

<b>Type of drive</b>	All-wheel drive
----------------------	-----------------

<b>Type of vehicle</b>	Saloon car
------------------------	------------

<b>Colour / colour code</b>	Ibisweiss (Y9C)
-----------------------------	-----------------

<b>Doors / Seats</b>	5 / 4
----------------------	-------

<b>Upholstery type</b>	Cloth
------------------------	-------

<b>Colour of upholstery</b>	Black
-----------------------------	-------

<b>Re-import</b>	no
------------------	----

<b>Vehicle with smoke odor</b>	no
--------------------------------	----



Vehicle details			
<b>Maintenance booklet / proof</b>	digital proof / complete	<b>Next maintenance in</b>	-17 Tag(e)
<b>Last service on / at</b>	06/2024 at 29,637 km		
<b>Key is / should be</b>	2 / 2	<b>FZG documents</b>	ZB#2 (B) was available (copy), ZB#1 (S) was not available.
		<b>Letter No.</b>	GP808378
<b>Previous damage / Accident</b>	Detectable	<b>Repainting</b>	None detectable
<b>Inspection conditions</b>	sufficient	<b>Lifting equipment / pit</b>	yes
<b>Test drive</b>	Not performed	<b>Engine function test</b>	Performed
<b>Manufacturer key number/ type code number</b>	0588 / BWO 00415		
<b>Emission standard</b>	EURO6;WLTP;AP;PI/CI; M, N1 I	<b>fine dust sticker</b>	
<b>Permitted total weight</b>	2,210 kg	<b>Empty weight</b>	

## Tyres

Mounted tyres				
#	Tyre size	Type of tyre	Manufacturer	Tread depth
1)	225/50 R17 98V	Winter tyres on Light alloy	Goodyear	6mm / 6mm
2)	225/50 R17 98V	Winter tyres on Light alloy	Goodyear	6mm / 6mm
Additional tyres				
#	Tyre size	Type of tyre	Manufacturer	Tread depth
1)	255/35 R19 96Y	Summer tyres on Light alloy	Bridgestone	5mm / 5mm
2)	255/35 R19 96Y	Summer tyres on Light alloy	Bridgestone	5mm / 5mm
Replacement				
Typ	Tyre size	Type of tyre	Manufacturer	Tread depth
	Tirefit	Expiration date 09/2026		

**Legend: Tread depth information for the left tire is listed first, for the right tire it is listed second on the axle in the direction of travel.**

TÜV SÜD Auto Partner GmbH  
Wiesenring 2  
04159 Leipzig

Inspection location  
Mosolf SE & Co.KG  
Faberweg 25  
73230 Kirchheim unter Teck



## Equipment



## Standard equipment

- AdBlue tank (12 liters)
- Airbag: Front side airbags and head airbag system (front side airbags integrated into the seatbacks; with additional head airbag system; deploys in front of the side window area and thus helps to protect front and outer rear passengers in the event of a side impact)
- Anti-lock braking system (ABS) (with electronic brake force distribution (EBD) and brake assist)
- Drive slip control
- Audi connect Emergency Call & Service including vehicle control (Emergency Call & Service: - Emergency call - Online breakdown call - Audi damage service - Audi service appointment online Vehicle control: - Vehicle status report - Remote control locking/unlocking - Parking position - Remote control auxiliary heater - Anti-theft alarm notification)
- Audi pre sense city (Within system limits, an impending collision with vehicles and pedestrians can be detected at speeds up to approximately 85 km/h. In this case, the system warns the driver visually, audibly, and, if necessary, with a braking jolt. It can initiate full deceleration if required to reduce the collision speed or, if possible, avoid the collision altogether.)
- Decorative inlays diamond lacquer silver grey (for dashboard, door panels and center console)
- Tachometer
- Door sill trims with aluminum inlay at the front, illuminated, with S lettering
- Electromechanical parking brake (includes parking brake function when stationary - starting aid by automatic release when starting and emergency braking function while driving via all four wheels)
- Driver information system (with high-resolution 5-inch monochrome display, display content: speed (digital speedometer), time, mileage, outside temperature, fuel warning with remaining range, gear shift recommendation, current radio station or music track, radio and media lists, telephone menu, navigation information (if available). The integrated efficiency program provides fuel consumption data overviews and tips for more economical driving; including break recommendation.)
- Front and rear floor mats (made of velour in black; in conjunction with interior design selection, interior S line or in the S model with contrast stitching color-matched to the respective interior color)
- Cruise control with adjustable speed limiter (The cruise control maintains the individually set speed above 20 km/h, provided the engine power allows it. The adjustable speed limiter helps to prevent exceeding a previously set maximum speed from approximately 30 km/h, e.g., within built-up areas.)
- Transmission: S tronic (7-speed)
- Interior lighting (front and rear roof module including capacitively operated front reading lights, illuminated make-up mirror, ambient light on center console, glove compartment light)
- Airbag for driver and front passenger (full-size airbag, with front passenger airbag deactivation)
- Accent surfaces in matte black (for dashboard, trim panels in door sills and center console insert)
- All-wheel drive "quattro" with ultra technology (ensures predictive engagement of the quattro drive through an intelligent operating strategy/control software, thus making it permanently available. The system includes an electronically controlled all-wheel drive coupling, a friction clutch integrated into the rear axle differential, and an electronic differential lock (EDS) for all driven wheels.)
- Audi drive select (adjustment of vehicle characteristics in the available modes auto, comfort, dynamic, individual by adapting the steering assistance, accelerator pedal and shift characteristics and other optional equipment. The individual mode allows the combination of different settings of the respective systems.)
- Electrically adjustable/heated exterior mirrors (with integrated LED indicator, convex, flat or aspherical mirror glass, including heated windshield washer nozzles)
- Exterior mirror housings in body color
- Outdoor temperature display
- third brake light
- Diesel particulate filter (DPF) with DeNox catalyst and AdBlue tank
- Rear parking aid (supports reversing by acoustically indicating the distance to a detected object behind the vehicle; measured by discreetly integrated ultrasonic sensors in the bumper, active when reverse gear is engaged)
- Electronic Stability Control (ESC) (networks ABS, EBV, ASR and EDS with its own sensors and compares the driving data with reference data; ensures greater stability at any speed by selectively braking individual wheels and intervening in engine management)
- Chassis (sports chassis) (with firmer spring and damping for more direct road contact and sporty handling)
- Electric front windows (with one-touch up/down function (including excess force limitation) and comfort operation)
- Remote key, without Safe-Lock (locks and unlocks doors, luggage compartment and fuel filler flap - including Keyless-Go - including comfort closing/opening of windows)
- Electrically opening and closing tailgate (opening via the button on the vehicle key, the button in the driver's door panel, or the soft-touch button in the tailgate handle recess, or by a foot gesture (kick movement) in conjunction with the comfort key including sensor-controlled tailgate release; closing via the button on the inside of the tailgate, the button in the driver's door, or via the comfort key (continuous press), or by a foot gesture (kick movement) in conjunction with the comfort key including sensor-controlled tailgate release)
- Interior mirror dimming
- Manual child lock



- Automatic climate control (1-zone - electronically regulates air temperature, volume and distribution, sun position-dependent control - air distribution can be set using 5 main positions - 3 LEDs integrated into the seat heating/ventilation buttons provide feedback on the selected setting (optional) - buttons for defrosting the front and rear windows - manual recirculation control - with key recognition and humidity sensor - dust and odor-removing cabin air filter)
- LED headlights (using LED technology; low beam, high beam, daytime running lights and position lights in LED; turn signals in incandescent technology, with all-weather light)
- Mild hybrid (Mild hybrid features an enhanced start-stop function, extended energy recuperation during braking to charge the starter battery, and additional lithium-ion storage. This allows the system to recover more energy and switch off the engine more frequently. A supplementary belt-driven starter generator (BSG) is conceptually included for mild hybrid systems. Purely electric driving is not possible.)
- Gloss package (roof frame and window channel strips in anodized aluminum)
- Wheel: Tire pressure monitoring system (visual and audible warning in case of pressure loss in one or more wheels)
- Wheel: Low rolling resistance tires, speed-limited (size 245/40 R18, maximum permissible speed 210 km/h)
- Radio accessories: 8 speakers
- Radio accessories: Data module Europe
- Rear seat backrest foldable (split in a 40:20:40 ratio or fully foldable, with center armrest)
- Electromechanical power steering (maintenance-free rack and pinion steering with speed-dependent steering assistance; precise steering feel at high speeds, excellent support when parking.)
- Seat belts: Three-point automatic seat belts for all seats (front seat belt wearer detection, color-coordinated with the interior, front belt force limiter, front belt tensioner)
- Start-stop system (helps reduce fuel consumption and CO2 emissions by switching off the engine during stationary phases, e.g. at traffic lights. For restarting, the starting process is initiated as soon as the foot brake is released. Can be deactivated at any time via a button.)
- First aid kit with warning triangle (warning triangle - first aid kit - 2 high-visibility vests)
- Glazing: Windscreen in heat-insulating and acoustic glazing (windscreen in heat-insulating glazing, green tinted - improved external noise insulation)
- Green heat-insulating glazing (green tinted - for rear window, door and side windows - rear window heated, with timer)
- ISOFIX and Top Tether child seat anchorage for the outer rear seats (standard mounting for practical attachment of ISOFIX child seats - Incl. additional attachment point (Top Tether) - The recommended child seats are available from your Audi partner)
- boot floor mat
- Headrests (4) (height adjustable front and rear)
- Fuel tank (58 liters)
- LED rear lights (indicator, brake, tail, reversing and rear license plate lights in LED technology. Brake lights in LED technology enable earlier detection by following traffic due to faster activation.)
- Steering wheel: Leather steering wheel in 3-spoke design with multifunction (with 6 multifunction buttons for operating the basic functions of the existing infotainment system; height and distance adjustable, with full-size airbag; leather steering wheel rim)
- front center armrest
- Non-smoking version (one 12-volt socket each in the center console at the front in front of the gearshift/selector lever and at the rear for the 2nd row of seats - no cigarette lighter)
- Upholstery: Fabric upholstery Index (for standard seats: - Seat center panels in fabric Index rock grey or black - Seat side bolsters, headrests and center armrest in fabric solid rock grey or black)
- Wheel: Tire repair kit (12V compressor and tire sealant, maximum speed 80 km/h)
- Radio: MMI Radio Plus (10.1" color display (1,540 × 720) including MMI touch operation - Driver information system with 5" mono display - Audi music interface with 1 USB-A and 1 USB-C port, each with data and charging function - Bluetooth interface (hands-free calling and audio streaming) - 8 passive speakers - AM/FM phase diversity - speed-dependent volume adjustment - voice control system with natural language for controlling infotainment and vehicle functions - WLAN hardware - DAB+ digital radio)
- Front seats (standard seats) (with manual adjustment of seat height, seat longitudinal position, backrest angle, headrest and seat belt height)
- Telephone: Bluetooth interface (The smartphone can be connected to the vehicle via Bluetooth to play music or make phone calls. Two mobile phones can be connected simultaneously for hands-free calling. Complete contact data is only displayed from the first primary phone registered in the MMI. Depending on the smartphone model, emails and SMS messages can also be displayed in the MMI via Bluetooth.)
- Electronic immobilizer (integrated into engine control unit, activated by vehicle key)



### Extra equipment

- Comfort package seats (variable headrests for the front seats - 4-way lumbar support for the front seats, electrically adjustable horizontally and vertically - comfort center armrest in the front, longitudinally adjustable and tiltable; additional storage option in the integrated storage compartment)
- Infotainment package smartphone package
- LED matrix headlights with dynamic turn signals front and rear (daytime running lights, low beam, high beam, position lights, turn signals, cornering lights, static curve lighting (supplementing lateral illumination in tight curves and when turning), all-weather light (to reduce glare in poor visibility conditions), maneuvering light (illuminating the swivel area when reversing), motorway light (extended beam range from a speed of 110 km/h), automatic dynamic headlight range control)
- Parking Assistance Package (Parking Aid Plus - Parking Assist - Rearview Camera)
- Telephone: Audi Phone Box (Up to two smartphones can be paired with the vehicle simultaneously via Bluetooth, allowing you to either play music through the vehicle or make phone calls from one of the two smartphones. It connects to the vehicle's antenna, improving both reception and call quality. Additionally, the smartphone can be charged wirelessly using the Qi standard or via USB if it is still in the storage compartment.)
- Three-seater rear seating system (distinctive outer rear seats, visually adapted to the front seats and an additional middle seat - 3 rear L-shaped headrests, manually height-adjustable for better rear visibility; rear seat backrest split in a 40:20:40 ratio or fully foldable)
- Airbag: Rear side airbags
- Black fabric headliner
- Business package (front seat heating - comfort package mirrors - infotainment package smartphone - navigation package - leather steering wheel in 3-spoke design with multifunction plus)
- Deletion of performance/technology lettering
- Driving Assistance Package (Audi active lane assist - Audi adaptive cruise control - Audi pre sense rear and basic - Traffic jam assist - Predictive efficiency assist - Evasive steering assist - Left turn assist - High beam assist - Driver information system with color display - Camera-based traffic sign recognition - Lane change warning)
- Front sports seats (with manual adjustment of seat height, seat longitudinal position, seat tilt, backrest tilt, headrest and belt height; with pronounced seat side bolsters for better lateral support in curves, extendable thigh support)
- Glazing: Sun protection glazing, tinted (rear window, rear door and side windows tinted)
- Paint finish: Solid
- Radio accessories: Audi sound system (10 speakers including center speaker and subwoofer - 6-channel amplifier - total output of 180 watts)
- Steering wheel: Leather steering wheel in 3-spoke design with multifunction plus
- Upholstery: Fabric system
- Wheel: Alloy wheels "5-spoke Cavo design" graphite grey, polished (8.5 J x 19 with tires 255/35 R 19)
- Wheel: Audi new car tire warranty

### Brief expert findings

Documents submitted	At the time of the inspection, the vehicle registration certificate Part 2 (title) was available, but the vehicle registration certificate Part 1 (document) was not. (Copy)
VIN comparison	The vehicle identification number (VIN) was read from the vehicle and its conformity with the submitted documents was confirmed by the undersigned during the inspection.
Inspection	The inspection conditions were sufficient for the assessment of the vehicle. Lifting equipment and/or a pit were available for examining the vehicle.
Test drive	No test drive/shunting maneuver was carried out during the inspection of the vehicle.
Engine function test	An engine test run was performed.

### Value reducing factors

No.	Component group	Description
1	Boot lid / rear door	Boot lid - Glued / labelled - De-glue / neutralise
2	Side panel - rear left side	Elbow - dent(s) - Smooth repair work
3	2nd wheel set	1 alloy rim - Scratch(es) - Loss in value
4	Misc.	Inspection / maintenance - Due - Perform



## Wear and tear

No.	Component group	Description
1	Misc.	Inspection / maintenance - No evidence - No deduction
2	Front bumper	Front bumper - Stone chips - No deduction
3	Vehicle glazing	Windscreen - Stone chips - No deduction
4	Bonnet	Bonnet - Stone chips - No deduction
5	Front bumper	Front bumper - Stone chips - No deduction

The vehicle shows signs of wear and tear commensurate with its age and use.

## Previous damages

No.	Previous damage	Extent of damage (Net)
1	Front, Provided by user / customer, from 3 Nov 2023	2.750,00 €
2	Front, Provided by user / customer, from 29 Aug 2025	4.787,73 €

## Paint coat thickness measurement

Bonnet 58 µm |

## Order/Scope of Order

An order was placed to prepare a sales report for the described vehicle. This report includes the following:

- Description of key vehicle information
- Documentation of equipment features  
(*Delivery by third-party service providers*)
- Documentation of damage, defects, missing parts
- Documentation of prior damage, unrepaired prior damage, repainting
- A brief visual or functional inspection of the equipment details, if possible.  
(*Functional testing of driver assistance systems is not included in the scope of services!*)
- a photographic documentation of the vehicle

## Basis for the order

This product is based on the guidelines for vehicle returns and valuations published by Alphabet Fleet GmbH. The expert makes the specific findings in each individual case objectively, within the framework of the prescribed standards, based on their own expertise.

The vehicle inspection takes place in a fully assembled, unassembled state.

Damage or defects that can only be detected during disassembly/diagnostic work or through further investigation remain within the realm of prognostic risk. An increased risk exists due to concealed defects caused by fraudulent misrepresentation and which were not identifiable by the expert.

Damage or defects resulting from normal use or wear and tear of the vehicle will be accepted in accordance with the applicable standard.

There was no explicit identification or monetary consideration of the expected features within the product.

Features which, in their nature and extent, slightly exceed normal use but do not constitute unacceptable damage, will be documented and indicated as signs of wear, if applicable.

Damage or defects that, according to the applicable standard, can no longer be attributed to normal use or wear and tear are listed under "Value Reducing Factors" in the product description.

Depending on the product specification, a monetary ID can be provided. If this takes place, the costs can be 100% d or pro rata depending on the vehicle's age and mileage.



## Previous damages

According to available information previous damages were repaired at the vehicle. Traces of repairs, which allow conclusions about the area of repair, were not recognizable during the inspection.

## Comments

Winter - Radsatz ist kein Bestandteil des Lieferumfangs.



Figure 1: Diagonal front (left)



Figure 2: Diagonal front (right)



Figure 3: Diagonal rear (left)



Figure 4: Diagonal rear (right)



Figure 5: Interior - front



Figure 6: Interior - rear



Figure 7: Instrument cluster



Figure 8: Instrument panel



Figure 9: Interior 360° view



Figure 10: Cargo area

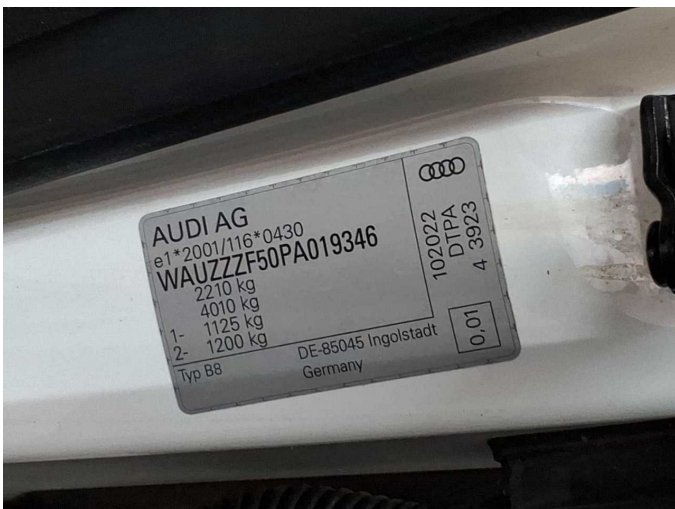


Figure 11: VIN



Figure 12: Mounted tyres



Figure 13: Documents



Figure 14: Documents



Figure 15: Documents



Figure 16: Additional tyres



Figure 17: Navigation



Figure 18: Misc.



Figure 19: Misc.



Figure 20: Misc.



Figure 21: Misc.



Figure 22: Misc.



Figure 23: Misc.

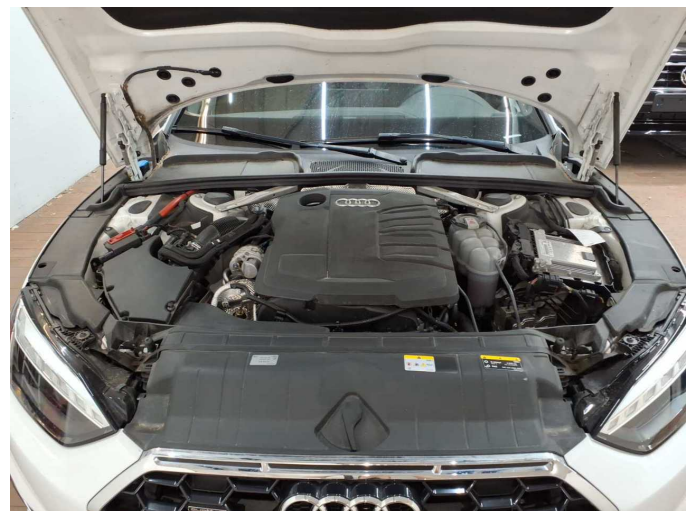


Figure 24: Misc.



Figure 25: Misc.



Figure 26: Misc.



Figure 27: Misc.



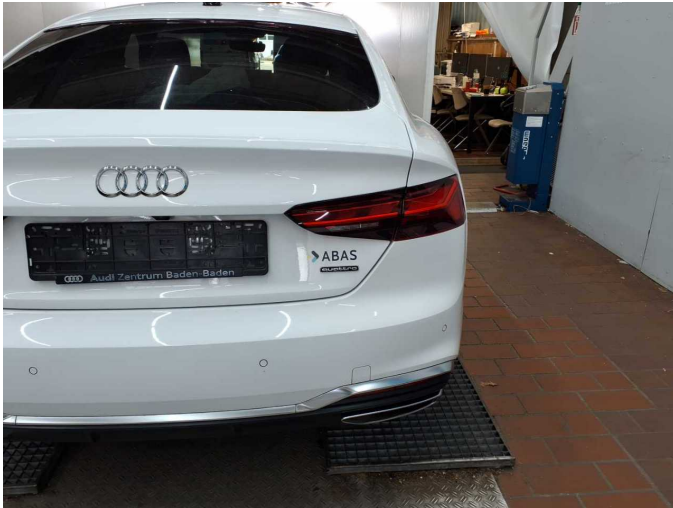
Figure 28: Misc.



Figure 29: Misc.



Figure 30: Misc.



**Damage 1:** Boot lid / rear door: Boot lid - Glued / labelled - De-glue / neutralise



**Damage 1:** Boot lid / rear door: Boot lid - Glued / labelled - De-glue / neutralise



**Damage 2:** Side panel - rear left side: Elbow - dent(s) - Smooth repair work



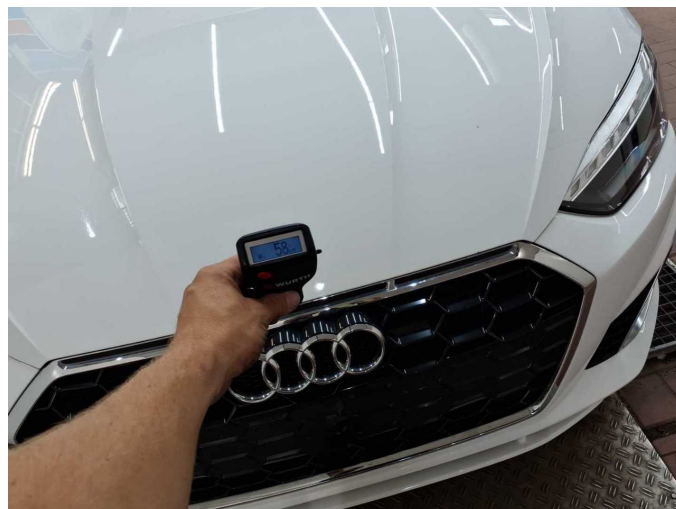
**Damage 2:** Side panel - rear left side: Elbow - dent(s) - Smooth repair work



**Damage 3:** 2nd wheel set: 1 alloy rim - Scratch(es) - Loss in value



**Damage 3:** 2nd wheel set: 1 alloy rim - Scratch(es) - Loss in value



**Damage 4:** Misc.: Inspection / maintenance - Due - Perform

**Previous damage 1:** Front



# Wartungshistorie

(gemäß Auftraggeber Informationen)

Fahrgestellnummer: WAUZZZF50PA019346

Hersteller / Modell: AUDI AUDI A5 Sportback 40 TDI quattro S tronic S line

Datum	KM-Stand	Beschreibung
12.11.2025	47.998	HU + AU
22.11.2024	37.500	Bremsflüssigkeit; Bremsflüssigkeit ern
24.06.2024	29.637	Motoröl b. Wartung; Ölfilter ern; Regelwartungsdienst; Wartung Sonstiges