

## Expertise

Protocol number: 46165116  
Order No. / Reference: 26460500  
Inspection date: 26 Jun 2026

Manufacturer: Volkswagen

Model: Tiguan Allspace 2.0 TDI SCR Comfortline

VIN: WVGZZZ5NZMM034322



### Vehicle details

#### Manufacturer / Type / Model / Equipment

Volkswagen Tiguan Allspace 2.0 TDI SCR Comfortline

**Vehicle Identification number** WVGZZZ5NZMM034322

**Mileage (Read)** 77,814 km

**First registration** 3 Feb 2021

**Number of holders** 1

**Next periodical technical inspection** 03/2028

(Report not on hand)

**Power / Engine displacement** 110 kw / 1,968 ccm

**Fuel type / Cylinder** Diesel / 4

**Gearbox / Number of gears** Manual / 6

**Type of drive** Front drive

**Type of vehicle** SUV

**Colour / colour code** Deep Black Perleffekt

**Doors / Seats** 5 / 5

**Upholstery type** Cloth

**Colour of upholstery** Black



## Vehicle details

<b>Maintenance booklet / proof</b>	digital proof / complete	<b>Next maintenance in</b>	1,500 km
<b>Last service on / at</b>	10/2024 at 49,280 km		
<b>Key is / should be</b>	2 / 2	<b>FZG documents</b>	ZB#2 (B) was available (copy), ZB#1 (S) was not available.
		<b>Letter No.</b>	FX486827
<b>Previous damage / Accident</b>	None detectable	<b>Repainting</b>	None detectable
<b>Inspection conditions</b>	sufficient	<b>Lifting equipment / pit</b>	No
<b>Test drive</b>	Not performed	<b>Engine function test</b>	Performed
<b>Manufacturer key number/ type code number</b>	0603 / BZG 11593		
<b>Emission standard</b>	EURO6;WLTP;AP;PI/CI; M, N1 I	<b>fine dust sticker</b>	
<b>Permitted total weight</b>	2,230 kg	<b>Empty weight</b>	

## Tyres

### Mounted tyres

#	Tyre size	Type of tyre	Manufacturer	Tread depth
1)	215/65 R17 99V	Summer tyres on Light alloy	Continental	4mm / 4mm
2)	215/65 R17 99V	Summer tyres on Light alloy	Continental	5mm / 5mm

### Additional tyres

#	Tyre size	Type of tyre	Manufacturer	Tread depth
1)	215/65 R17 99H	Winter tyres on Light alloy	Pirelli	5mm / 5mm
2)	215/65 R17 99H	Winter tyres on Light alloy	Pirelli	5mm / 5mm

### Replacement

Typ	Tyre size	Type of tyre	Manufacturer	Tread depth
N	145/85 R18 103M	Summer tyres on Steel	Sonstige	5 mm

**Legend: Tread depth information for the left tire is listed first, for the right tire it is listed second on the axle in the direction of travel.**



## Equipment

### Standard equipment

- 2 USB-C ports on the front
- Airbag for driver and front passenger including knee airbag on the driver's side
- Exterior mirror housings painted silver
- Chrome trim on the side windows
- Silver anodized roof rails
- Dual-tone signal horn
- Electronic parking brake including auto-hold function
- Automatic headlight control, with daytime running lights
- High beam control Light Assist
- Pedestrian detection
- Luggage compartment cover
- Luggage compartment lid with electric opening and closing
- Rear window wiper with intermittent function
- ISOFIX mounting points, also for i-Size child car seats
- Combination instrument cluster with electronic speedometer
- Steering wheel: Multifunction steering wheel in leather
- Light in the front footwell
- front center armrest
- Fatigue detection
- Non-smoking version
- Emergency call service
- Upholstery: Cloth
- Radio accessories: Digital radio reception DAB+
- Tire pressure monitoring system
- Wheels: Tires 215/65 R 17, optimized for low rolling resistance
- Drawers under the front seats
- Seat belts: Three-point automatic seat belts at the front with height adjustment and belt tensioner
- Seats: Folding tables on the backs of the front seats
- Seats: Lumbar support in the front
- Seats: Front seats with height adjustment
- Start-stop system with brake energy recuperation
- Bumpers in body color
- First aid kit, warning triangle and high-visibility vest
- Electronic immobilizer
- Central locking without safe locking, with remote control and 2 remote keys
- Storage compartments in the overhead console
- Airbag, head airbag system including front side airbags
- Aspherical exterior mirror on driver's side
- Chrome applications on mirror adjustment switches, window regulator switches, door pull handles
- Decorative inlays "Checker Flag Titanium"
- Parking assistance
- Electronic Stability Program with counter-steering support
- Electric windows front and rear
- Windscreen made of laminated safety glass, heat and sound insulating
- Luggage compartment lighting
- Transmission: 6-speed manual transmission
- Rear window heated
- Interior mirror automatically dimming
- LED license plate lighting
- Rear headrests (3)
- Front headrests
- Reading lights: 2 front and 2 rear
- Manual headlight range adjustment
- Multifunction display "Premium"
- Fog lights and cornering lights
- Emergency braking assistant "Front Assist"
- Otto particulate filter
- Radio accessories: 8 speakers
- Rain sensor
- Wheels: Light alloy (4) "Tulsa" 7 J x 17
- Wheels: Tire Mobility Set
- Gearshift knob in leather
- Power steering
- Seats: Front passenger seat backrest folds down completely
- Seats: Comfort seats in the front
- Seats: Rear bench seat asymmetrically split
- Lane keeping assistant "Lane Assist"
- 12-volt socket
- Textile floor mats front and rear
- Prepared for "We Connect" and "We Connect Plus"
- Green thermal insulation glazing, sides and rear



## Extra equipment

- 2 USB-C ports at the front (1 USB-C charging port at the rear of the center console)
- Chassis: Sport chassis
- Wirelessly heated windshield (infrared-reflective)
- Air conditioning "Air Care Climatronic" (3-zone temperature control - allergen filter - rear controls)
- Package: Mirror package (electrically adjustable, folding and heated exterior mirrors with passenger-side mirror lowering function - automatically dimming interior mirror)
- Package: Winter 1 (automatically heated front windshield washer nozzles - headlight cleaning system - heated front seats)
- Panoramic tilt/slide sunroof with panoramic roof at the rear (2 LED reading lights at the front and 2 at the rear - panoramic tilt/slide sunroof with panoramic roof at the rear)
- Rearview camera including "Park Assist" and parking aid (acoustic warning signals for obstacles in the front and rear area - display in the radio or navigation system display - automatically steers the vehicle into parallel and perpendicular parking spaces and also parks out of parallel parking spaces - camera image in the radio or navigation system display shows the area behind the vehicle)
- Surround view "Area View" (incl. reversing camera "Rear View")
- Active Lighting System (Dynamic Light Assist high beam control - LED headlights with LED daytime running lights and cornering lights - Dynamic headlight range control with dynamic cornering lights - Multifunction camera)
- Paint finish: Pearl effect
- Navigation system "Discover Media" incl. "Streaming & Internet" (8 speakers - 20.3 cm touchscreen - dual tuner with phase diversity for best possible radio reception - Radio Data System (RDS) - MP3 playback - USB-C interface with Apple compatibility - 4 x 20 watt output power - map with 2D display - telephone interface - traffic sign recognition - points of interest - DAB+ digital radio reception)
- Wheels: Spare wheel, weight and space saving, 18 inch (on-board tools and jack)
- Voice control
- Auxiliary heating and ventilation (with radio remote control and timer)
- "Comfort" telephone interface with inductive charging function (operation and display via multifunction display and touchscreen of the radio or radio navigation system as well as via multifunction steering wheel - hands-free system - Bluetooth audio - external antenna connection with LTE support - 2 USB interfaces, also for iPod/iPhone; 1 USB charging socket and multimedia socket AUX-IN)

## Brief expert findings

Documents submitted	At the time of the inspection, the vehicle registration certificate Part 2 (title) was available, but the vehicle registration certificate Part 1 (document) was not. (Copy)
VIN comparison	The vehicle identification number (VIN) was read from the vehicle and its conformity with the submitted documents was confirmed by the undersigned during the inspection.
Inspection	The inspection conditions were sufficient for the assessment of the vehicle. No lifting equipment or pit was available for inspecting the vehicle. Therefore, inspection of the vehicle's underside was only possible to a limited extent.
Test drive	No test drive/shunting maneuver was carried out during the inspection of the vehicle.
Engine function test	An engine test run was performed.

## Value reducing factors

No.	Component group	Description
1	Vehicle glazing	Windscreen with lane departure assistant - Broken / torn - Replace

## Order/Scope of Order

An order was placed to prepare a sales report for the described vehicle. This report includes the following:

- Description of key vehicle information
- Documentation of equipment features  
(*Delivery by third-party service providers*)
- Documentation of damage, defects, missing parts
- Documentation of prior damage, unrepaired prior damage, repainting
- A brief visual or functional inspection of the equipment details, if possible.  
(*Functional testing of driver assistance systems is not included in the scope of services!*)
- a photographic documentation of the vehicle



## Basis for the order

This product is based on the guidelines for vehicle returns and valuations published by Alphabet Fleet GmbH. The expert makes the specific findings in each individual case objectively, within the framework of the prescribed standards, based on their own expertise.

The vehicle inspection takes place in a fully assembled, unassembled state.

Damage or defects that can only be detected during disassembly/diagnostic work or through further investigation remain within the realm of prognostic risk. An increased risk exists due to concealed defects caused by fraudulent misrepresentation and which were not identifiable by the expert.

Damage or defects resulting from normal use or wear and tear of the vehicle will be accepted in accordance with the applicable standard.

There was no explicit identification or monetary consideration of the expected features within the product.

Features which, in their nature and extent, slightly exceed normal use but do not constitute unacceptable damage, will be documented and indicated as signs of wear, if applicable.

Damage or defects that, according to the applicable standard, can no longer be attributed to normal use or wear and tear are listed under "Value Reducing Factors" in the product description.

Depending on the product specification, a monetary ID can be provided. If this takes place, the costs can be 100% d or pro rata depending on the vehicle's age and mileage.

## Previous damages

No apparent prior damage that had been repaired could be found on the vehicle.

## Comments

- Die Unterbodenbesichtigung war nur ebenerdig & eingeschränkt möglich. Mehrkosten möglich.
- Winterradsatz ist kein Bestandteil des Auslieferungsumfangs.



Figure 1: Diagonal front (left)



Figure 2: Diagonal front (right)



Figure 3: Diagonal rear (left)



Figure 4: Diagonal rear (right)

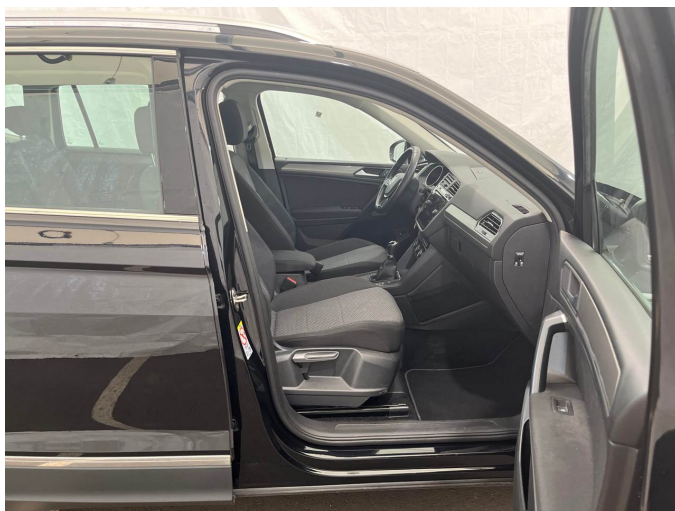


Figure 5: Interior - front



Figure 6: Interior - rear



Figure 7: Instrument cluster



Figure 8: Instrument panel



Figure 9: Interior 360° view

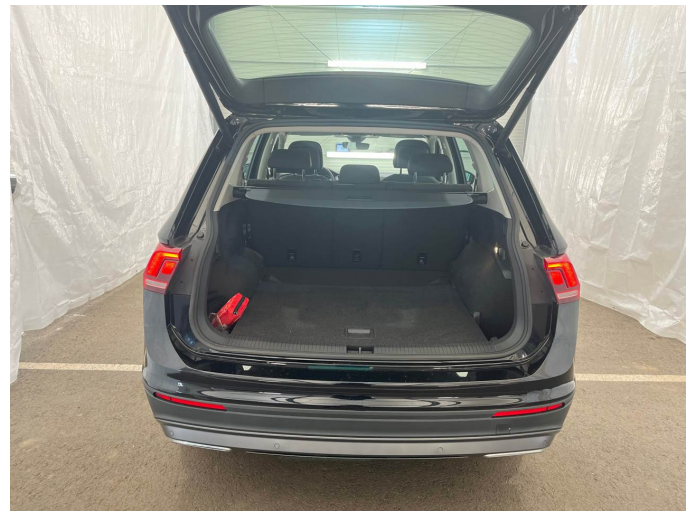


Figure 10: Cargo area

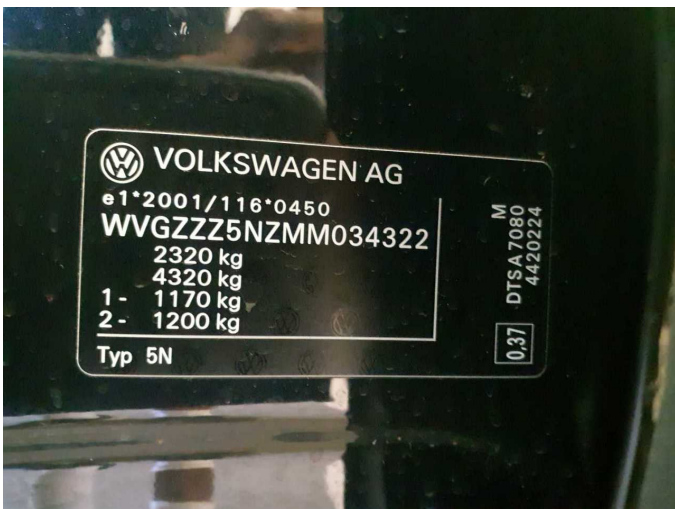


Figure 11: VIN



Figure 12: Mounted tyres

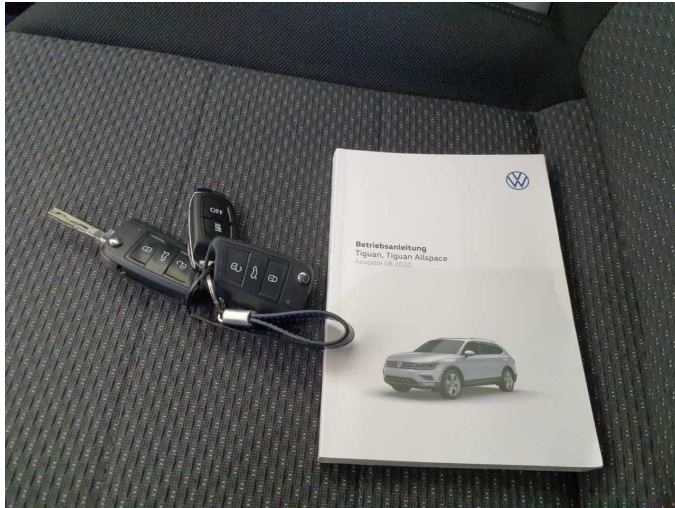


Figure 13: Documents



Figure 14: Documents



Figure 15: Additional tyres

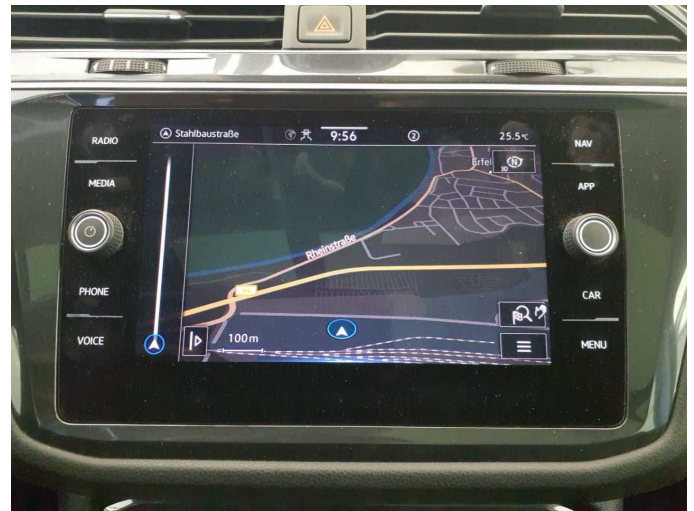


Figure 16: Navigation



Figure 17: Misc.



Figure 18: Misc.



Figure 19: Misc.



Figure 20: Misc.

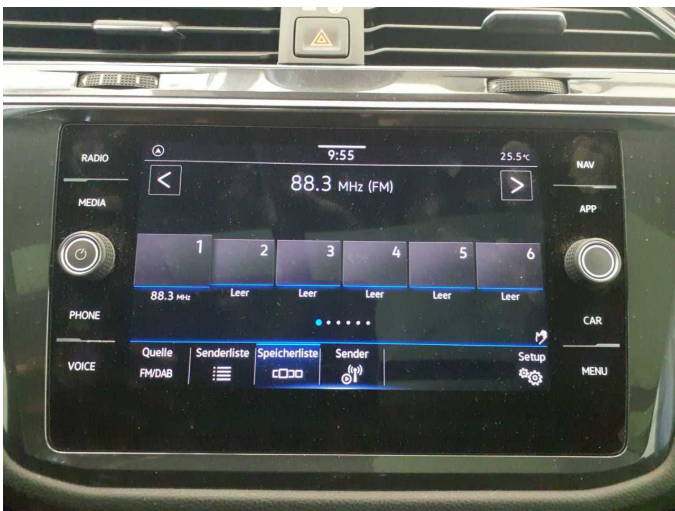


Figure 21: Misc.



Figure 22: Misc.

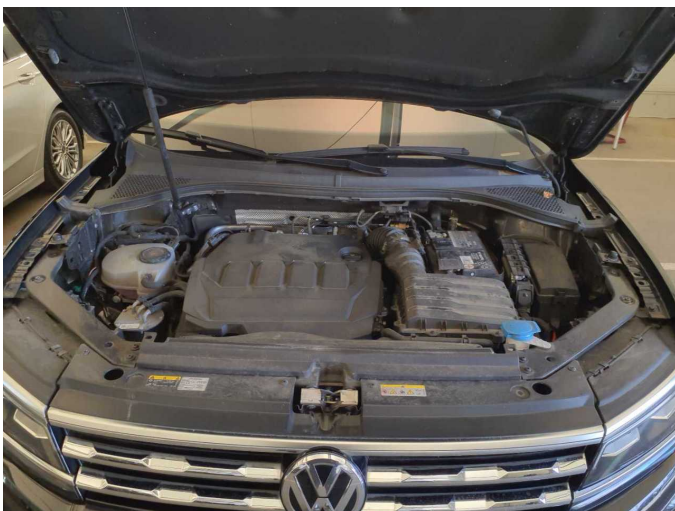


Figure 23: Misc.

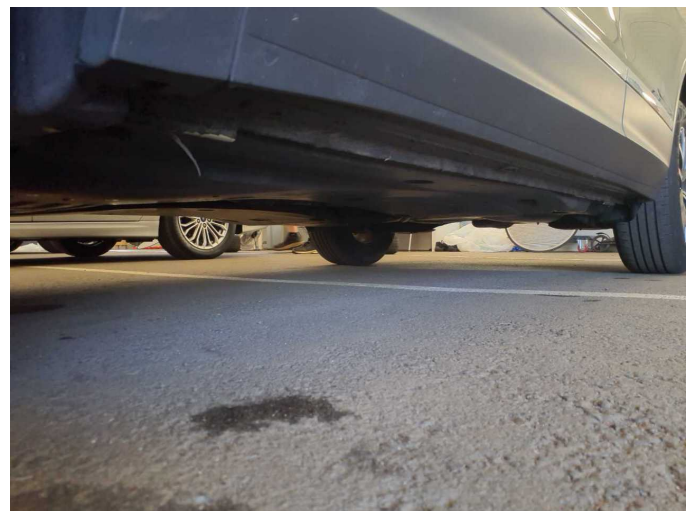


Figure 24: Misc.



Figure 25: Misc.



Figure 26: Misc.



Figure 27: Misc.



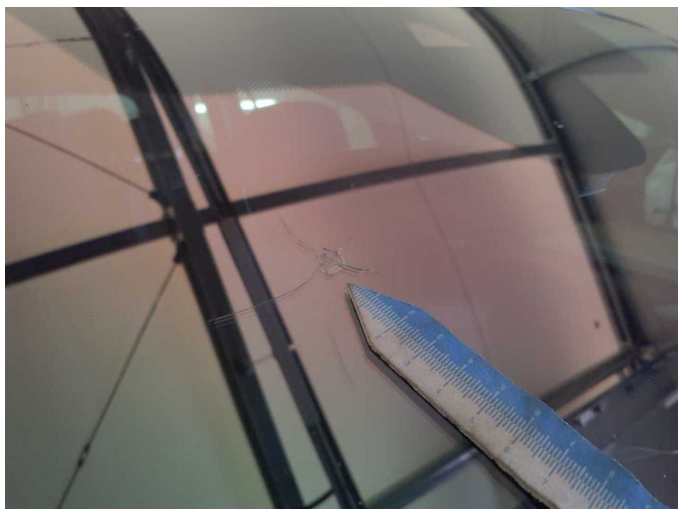
Figure 28: Misc.



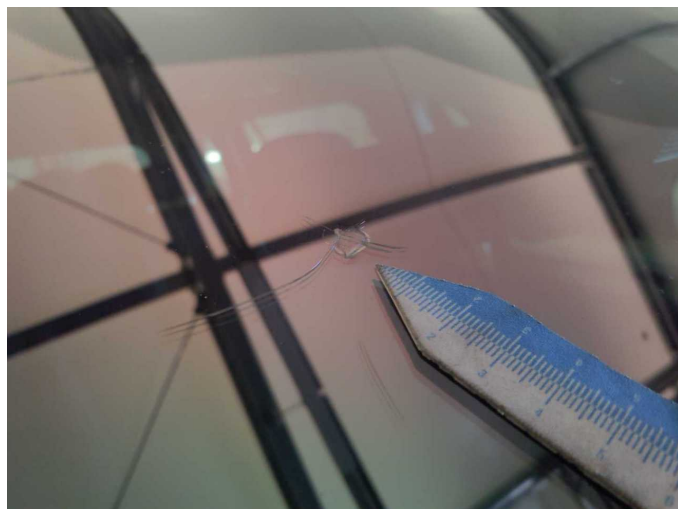
Figure 29: Misc.



**Damage 1:** Vehicle glazing: Windscreen with lane departure assistant - Broken / torn - Replace



**Damage 1:** Vehicle glazing: Windscreen with lane departure assistant - Broken / torn - Replace



**Damage 1:** Vehicle glazing: Windscreen with lane departure assistant - Broken / torn - Replace



# Wartungshistorie

(gemäß Auftraggeber Informationen)

Fahrgestellnummer: WVGZZZ5NZMM034322

Hersteller / Modell: VOLKSWAGEN VW Tiguan Allspace 2.0 TDI SCR Comfortline

Datum	KM-Stand	Beschreibung
27.03.2026	74.828	AU
17.10.2024	49.280	Bremsflüssigkeit; Bremsflüssigkeit ern; Motoröl b. Wartung; Ölfilter ern; Regelwartungsdienst; Systemtest/Eigendiagnose; Wartung Sonstiges
28.02.2024	34.848	AU; Bremse Sonstiges; Bremsklötze vorne; Bremsscheiben + Klötze h
21.12.2022	17.837	Motoröl b. Wartung; Ölfilter ern; Regelwartungsdienst; Wartung Sonstiges; Wartung Sonstiges