

Expertise

Protocol number: 46160561
Order No. / Reference: 26558311
Inspection date: 25 Jun 2026

Manufacturer: Ford

Model: Focus 1.5 EcoBlue Start-Stopp-System COOL&CONNECT

VIN: WF0NXXGCHNLK01318



Vehicle details

Manufacturer / Type / Model / Equipment

Ford Focus 1.5 EcoBlue Start-Stopp-System COOL&CONNECT

Vehicle Identification number WF0NXXGCHNLK01318

Mileage (Read) 108,015 km

First registration 7 Jul 2020

Number of holders 1

Next periodical technical inspection 07/2027

(Report on hand)

Power / Engine displacement 88 kw / 1,499 ccm

Fuel type / Cylinder Diesel / 4

Gearbox / Number of gears Manual / 6

Type of drive Front drive

Type of vehicle Saloon car

Colour / colour code Blazer Blau

Doors / Seats 5 / 5

Upholstery type Cloth

Colour of upholstery Anthracite-Black



Vehicle details

Maintenance booklet / proof	digital proof / complete	Next maintenance in	27 %
Last service on / at	10/2025 at 104,942 km		
Key is / should be	2 / 2	FZG documents	ZB#2 (B) was available (copy), ZB#1 (S) was not available.
		Letter No.	FV053186
Previous damage / Accident	Detectable	Repainting	None detectable
Inspection conditions	sufficient	Lifting equipment / pit	yes
Test drive	Not performed	Engine function test	Performed
Manufacturer key number/ type code number	8566 / BPU 00157		
Emission standard	EURO6;WLTP;DG;PI/CI; M, N1 I	fine dust sticker	
Permitted total weight	1,895 kg	Empty weight	

Tyres

Mounted tyres

#	Tyre size	Type of tyre	Manufacturer	Tread depth
1)	205/60 R16 92H	Summer tyres on Light alloy	Continental	3mm / 3mm
2)	205/60 R16 92H	Summer tyres on Light alloy	Continental	4mm / 4mm

Additional tyres

#	Tyre size	Type of tyre	Manufacturer	Tread depth
1)	205/60 R16 96H	Winter tyres on Steel	Semperit	5mm / 5mm
2)	205/60 R16 96H	Winter tyres on Steel	Semperit	5mm / 5mm

Replacement

Typ	Tyre size	Type of tyre	Manufacturer	Tread depth
N	125/70 R16 96M	Summer tyres on Steel	Hankook	2 mm

Legend: Tread depth information for the left tire is listed first, for the right tire it is listed second on the axle in the direction of travel.



Equipment

Standard equipment

- Airbag: Passenger airbag deactivation
- Tires: 6.5 J x 16 alloy wheels (4) with 205/60 R 16 tires
- Chrome decor
- Roof spoiler painted in car color
- Tachometer
- Driver information system
- Lane keeping assist including lane keeping assist
- Electric parking brake with auto-hold function
- FordPass Connect including eCall, live traffic information (only with navigation) and Wi-Fi hotspot
- Cruise control
- Illuminated glove compartment
- rear window wiper
- Instrument lighting, adjustable
- Isofix bracket
- Headrests: 2 front and 3 rear, height adjustable
- Charging station for mobile devices (inductive)
- Leather gear knob
- Adjustable steering column
- MyKey key system (individually programmable second key)
- Fog light
- Emergency brake light
- Pollen filter and dust filter
- Post-Collision Assist
- Tire repair kit
- Reversing camera with "Split View" technology
- Electromechanical power steering
- Seats: Driver's seat height adjustable
- Start-stop system
- Electronic immobilizer
- Heat-insulating glazing, tinted
- Additional heating

Extra equipment

- External mirrors, adjustable and controlled. Blind spot assist. HLLAD
- Package: Technology I (Cool&Connect) (Intelligent Adaptive Cruise Control (iACC) with traffic sign recognition - Wrong-way driver warning - Evasive Steering Assist (ESA) - High Beam Assist (in conjunction with intelligent LED headlights with glare-free high beam assist) - Driver alert system - Rain-sensing wipers with variable sensitivity - Auto-dimming rearview mirror - Headlights with delayed shut-off)
- Winter complete wheels

- Anti-lock braking system (ABS) with electronic brake force distribution (EBD)
- Fabric headliner
- Diesel particulate filter (DPF)
- Electronic Safety and Stability Program (ESP)
- Driving mode switch, selective
- Electric windows front and rear
- Ford ECO-Coach
- Luggage compartment lighting
- Speed limiter
- Transmission: 6-speed manual transmission
- Back window, heater
- Interior lighting with LED technology
- Intelligent security system
- air conditioning, manual
- Paint finish: Solid
- LED daytime running lights
- Steering wheel: Leather steering wheel, 3-spoke design
- Center console "Premium" front
- Navigation: Ford Navigation, Ford SYNC 3 with AppLink, 8" touchscreen (20.3 cm) with DAB/DAB+
- Front and rear parking pilot system
- Upholstery: Cloth
- Pre-Collision Assist
- Tire Pressure Monitoring System (TMPS)
- Headlight assistant with day/night sensor
- Seats: Passenger seat, 2-way adjustable
- Seats: Rear seat backrest
- Warning system for unfastened seat belts for the 1st and 2nd rows of seats
- Central/Double Locking

- Package: Easy Parking Package (Active Parking Assist with parking and exiting function - Blind Spot Assist and Cross Traffic Alert with emergency braking function (when reversing out of a parking space) - Door edge protection)
- Package: Winter (heated windscreen - heated steering wheel - individually and variably heated front seats)
- Seats: Ford ergonomic seat with fabric upholstery (front seats adjustable in 18 ways: - length, height and tilt of the seat, extendable thigh support - adjustable backrest - lumbar support electrically adjustable in 4 ways - headrest adjustable in 4 ways)



Brief expert findings

Documents submitted	At the time of the inspection, the vehicle registration certificate Part 2 (title) was available, but the vehicle registration certificate Part 1 (document) was not. (Copy)
VIN comparison	The vehicle identification number (VIN) was read from the vehicle and its conformity with the submitted documents was confirmed by the undersigned during the inspection.
Inspection	The inspection conditions were sufficient for the assessment of the vehicle. Lifting equipment and/or a pit were available for examining the vehicle.
Test drive	No test drive/shunting maneuver was carried out during the inspection of the vehicle.
Engine function test	An engine test run was performed.

Value reducing factors

No.	Component group	Description
1	Front bumper	Front bumper (unterhalb / in Unfallkalk enthalten) - Scratched
2	Door - front left side	Door - Scratch(es) - Smart repair
3	Bonnet	Insulation lining - Damage caused by marten / rodent - Replace
4	Rear bumper	Rear bumper - Scratch(es) - Smart repair
5	Engine	Engine - Leaking - Diagnosed and repair if necessary
6	Side panel - rear right side	Side panel - Dent / paintcoat damage - Repair and paint

Wear and tear

No.	Component group	Description
1	Body	Underbody panelling - Scratched - No deduction
2	Bonnet	Bonnet - Stone chips - No deduction
3	Vehicle glazing	Windscreen - Stone chips - No deduction

The vehicle shows signs of wear and tear commensurate with its age and use.

Accident damages

No.	Accident
1	Side right

Order/Scope of Order

An order was placed to prepare a sales report for the described vehicle. This report includes the following:

- Description of key vehicle information
- Documentation of equipment features
(*Delivery by third-party service providers*)
- Documentation of damage, defects, missing parts
- Documentation of prior damage, unrepaired prior damage, repainting
- A brief visual or functional inspection of the equipment details, if possible.
(*Functional testing of driver assistance systems is not included in the scope of services!*)
- a photographic documentation of the vehicle



Basis for the order

This product is based on the guidelines for vehicle returns and valuations published by Alphabet Fleet GmbH. The expert makes the specific findings in each individual case objectively, within the framework of the prescribed standards, based on their own expertise.

The vehicle inspection takes place in a fully assembled, unassembled state.

Damage or defects that can only be detected during disassembly/diagnostic work or through further investigation remain within the realm of prognostic risk. An increased risk exists due to concealed defects caused by fraudulent misrepresentation and which were not identifiable by the expert.

Damage or defects resulting from normal use or wear and tear of the vehicle will be accepted in accordance with the applicable standard.

There was no explicit identification or monetary consideration of the expected features within the product.

Features which, in their nature and extent, slightly exceed normal use but do not constitute unacceptable damage, will be documented and indicated as signs of wear, if applicable.

Damage or defects that, according to the applicable standard, can no longer be attributed to normal use or wear and tear are listed under "Value Reducing Factors" in the product description.

Depending on the product specification, a monetary ID can be provided. If this takes place, the costs can be 100% d or pro rata depending on the vehicle's age and mileage.

Previous damages

Non-repaired previous damages were found at the vehicle. The necessary repair costs are listed in the expert report or if necessary, are listed in detail in a separately enclosed repair cost calculation.



Figure 1: Diagonal front (left)



Figure 2: Diagonal front (right)



Figure 3: Diagonal rear (left)



Figure 4: Diagonal rear (right)

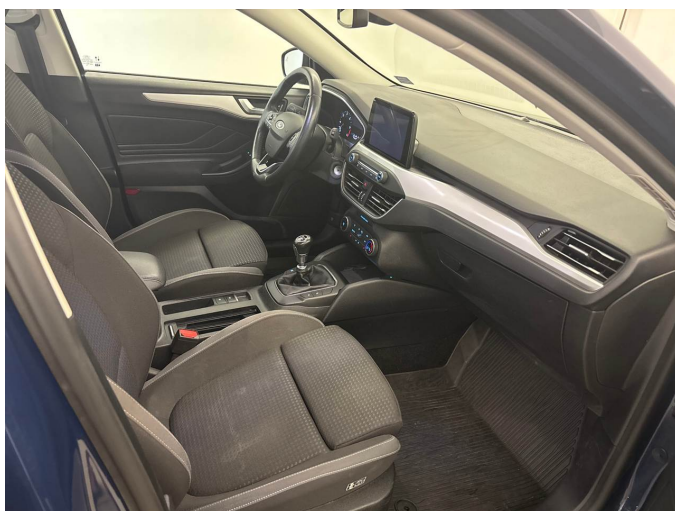


Figure 5: Interior - front



Figure 6: Interior - rear



Figure 7: Instrument cluster



Figure 8: Instrument panel



Figure 9: Interior 360° view



Figure 10: Cargo area



Figure 11: VIN



Figure 12: Mounted tyres

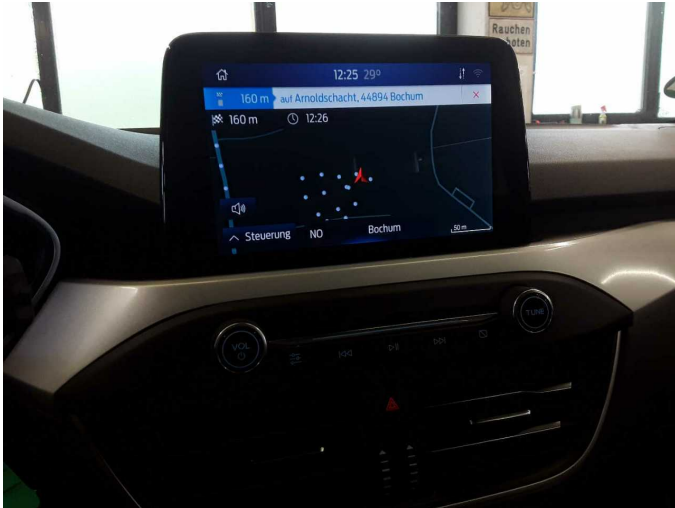


Figure 19: Navigation



Figure 20: Misc.



Figure 21: Misc.



Figure 22: Misc.



Figure 23: Misc.

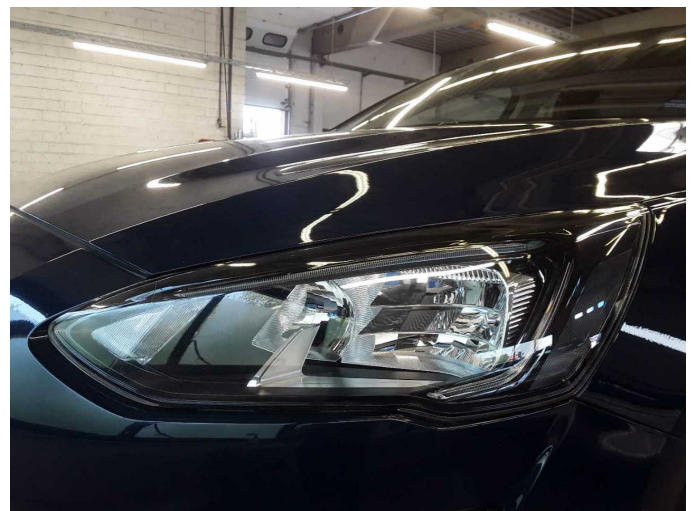


Figure 24: Misc.



Figure 25: Misc.



Figure 26: Misc.



Figure 27: Misc.



Figure 28: Misc.



Figure 29: Misc.



Figure 30: Misc.



Figure 31: Misc.



Damage 1: Front bumper: Front bumper (unterhalb / in Unfallkalk enthalten) - Scratched



Damage 2: Door - front left side: Door - Scratch(es) - Smart repair



Damage 2: Door - front left side: Door - Scratch(es) - Smart repair



Damage 3: Bonnet: Insulation lining - Damage caused by marten / rodent - Replace



Damage 4: Rear bumper: Rear bumper - Scratch(es) - Smart repair



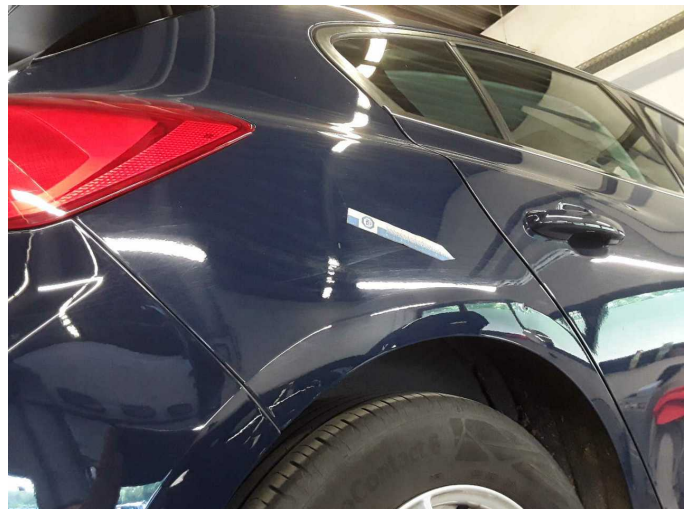
Damage 4: Rear bumper: Rear bumper - Scratch(es) - Smart repair



Damage 5: Engine: Engine - Leaking - Diagnosed and repair if necessary



Damage 5: Engine: Engine - Leaking - Diagnosed and repair if necessary



Damage 6: Side panel - rear right side: Side panel - Dent / paintcoat damage - Repair and paint



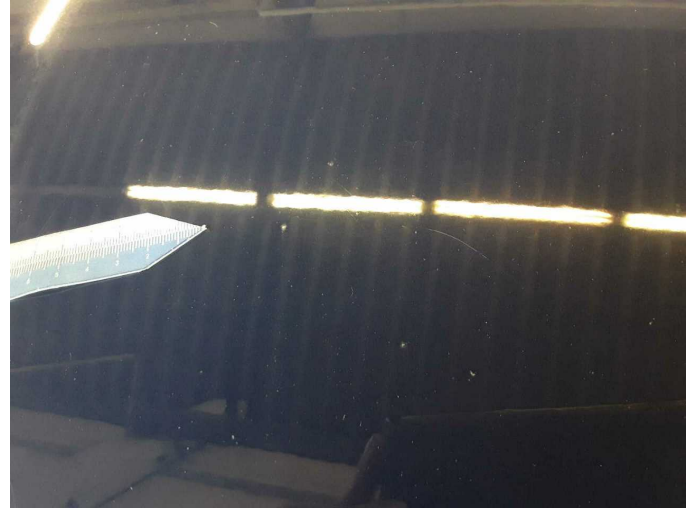
Damage 6: Side panel - rear right side: Side panel - Dent / paintcoat damage - Repair and paint



Wear and tear 1: Body: Underbody panelling - Scratched - No deduction



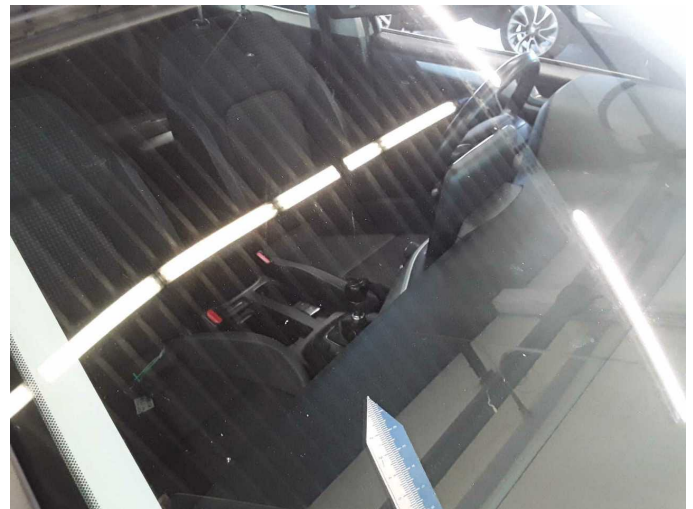
Wear and tear 2: Bonnet: Bonnet - Stone chips - No deduction



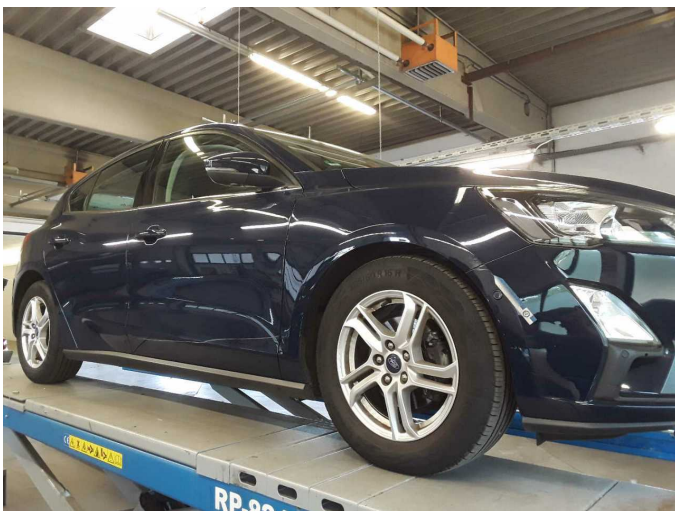
Wear and tear 2: Bonnet: Bonnet - Stone chips - No deduction



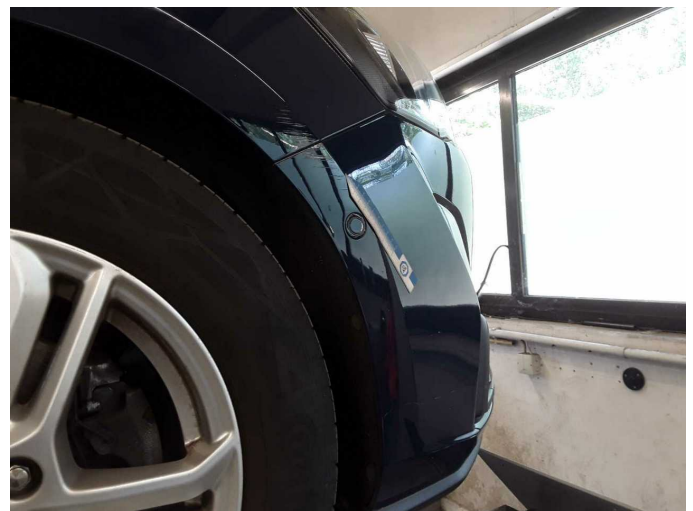
Wear and tear 3: Vehicle glazing: Windscreen - Stone chips - No deduction



Wear and tear 3: Vehicle glazing: Windscreen - Stone chips - No deduction



Accident 1: Side right



Accident 1: Side right



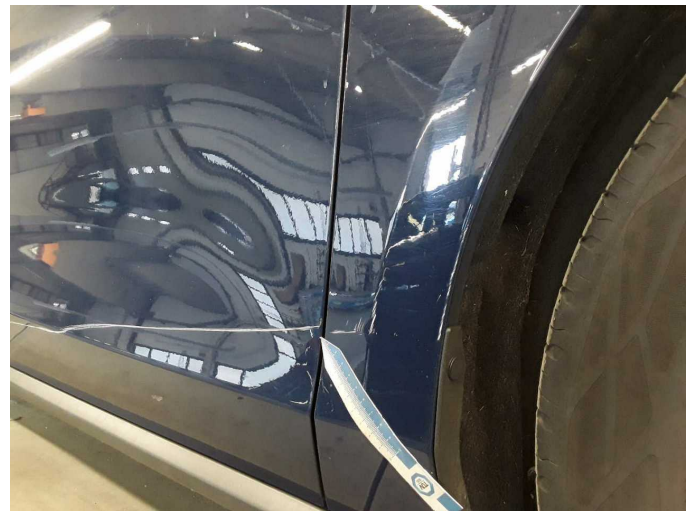
Accident 1: Side right



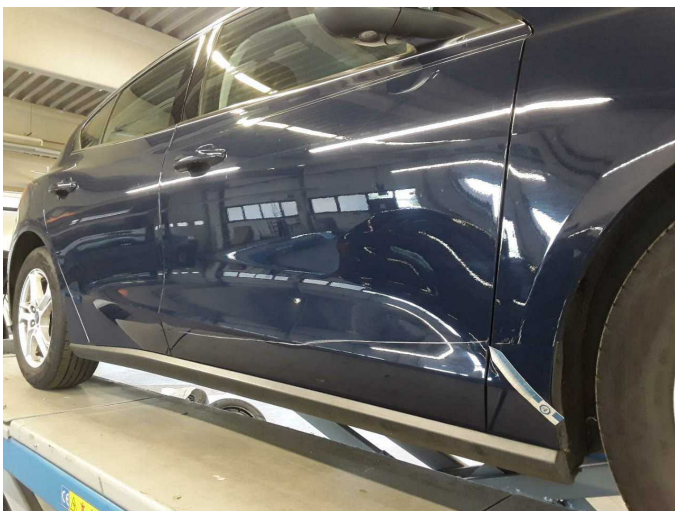
Accident 1: Side right



Accident 1: Side right



Accident 1: Side right



Accident 1: Side right



Accident 1: Side right



Wartungshistorie

(gemäß Auftraggeber Informationen)

Fahrgestellnummer: WF0NXXGCHNLK01318
Hersteller / Modell: FORD FORD Focus 1.5 EcoBlue Start-Stopp-System
COOL&CONNECT

Datum	KM-Stand	Beschreibung
02.10.2025	104.942	Bremsflüssigkeit; Bremsflüssigkeit ern; Motoröl b. Wartung; Ölwechsel; Regelwartungsdienst; Systemtest/Eigendiagnose
15.07.2025	100.447	HU + AU; Systemtest/Eigendiagnose
27.02.2025	89.860	Batterie ern; Motoröl b. Wartung; Ölfilter ern; Regelwartungsdienst; Systemtest/Eigendiagnose; Wartung Sonstiges
11.06.2024	74.179	Bremsinspektion vo + hi; Bremse Sonstiges; Bremsklötze hinten; Bremsklötze vorne; Bremsscheiben hinten; Bremsscheiben vorne; Motoröl b. Wartung; Ölfilter ern; Regelwartungsdienst; Wartung Sonstiges
07.11.2023	60.933	Kraftstofffilter ern; Luftfiltereinsatz ern; Motoröl b. Wartung; Ölfilter ern; Regelwartungsdienst; Wartung Sonstiges; Wartung Sonstiges
01.11.2023	61.925	Systemtest/Eigendiagnose; Wartung Sonstiges
11.07.2023	55.551	AU
30.11.2022	45.448	Systemtest/Eigendiagnose
27.10.2022	45.009	Bremse Sonstiges; Ladeluftschlauch ern; Motoröl b. Wartung; Ölwechsel; Systemtest/Eigendiagnose
17.02.2022	32.178	Kleine Inspektion; Motoröl b. Wartung; Ölfilter ern; Wartung Sonstiges
21.06.2021	16.035	Motoröl b. Wartung; Ölwechsel