



# Assessment

- Vehicle Inspection Report -

Number: 10259143  
From: 19.03.2026

## » Overview

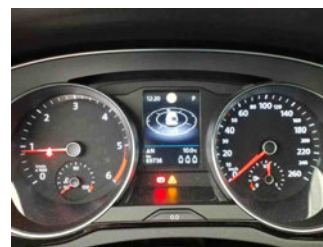
**Order number:** 1002359542  
**Order completed:** 19.03.2026 09:39  
**Report number:** 10259143  
**VIN:** WVVZZZ3CZPE026429



Front Left 3/4



Rear Right 3/4



Mileage



# Assessment

Number: 10259143  
From: 19.03.2026

- Vehicle Inspection Report -

## » Vehicle Data

<b>Vehicle category:</b>	Passenger Car
<b>Vehicle type:</b>	EstateCar
<b>Make:</b>	Volkswagen
<b>Model:</b>	Passat
<b>Manufacturers and type code:</b>	0603 / BQS
<b>Date of first registration:</b>	06.03.2023
<b>Mileage:</b>	69,738 km
<b>Proof of mileage:</b>	ReadOff
<b>Exterior colour:</b>	Pyritsilber Metallic
<b>Roof colour:</b>	Pyritsilber Metallic
<b>Propulsion:</b>	Front
<b>Fuel:</b>	Diesel
<b>Engine size (cc):</b>	2,000 ccm
<b>Performance:</b>	110 kW (150 PS)
<b>Length:</b>	
<b>Height:</b>	
<b>Width:</b>	
<b>Permitted total weight:</b>	
<b>Wheelbase:</b>	
<b>Number of powered axles:</b>	2
<b>Cylinders:</b>	4
<b>Euronorm:</b>	Euro 6
<b>Number of doors:</b>	4
<b>Number of seats:</b>	5
<b>Gearbox:</b>	Automatic 7-speed
<b>Upholstery type:</b>	Lining leather
<b>Interior colour:</b>	Titanschwarz/Titanschwarz/Titanschwarz
<b>Number of keys:</b>	2

## » Documents & Maintenance

<b>Statutory inspection date:</b>	03.2026
<b>Registration certificate available:</b>	Yes
<b>Registration certificate received:</b>	Yes
<b>License plate:</b>	Both
<b>Maintenance book:</b>	Digital
<b>Maintenance:</b>	Not testable
<b>Maintenance last date:</b>	
<b>Maintenance last mileage:</b>	
<b>Remainder until next maintenance:</b>	206 Day(s)



# Assessment

- Vehicle Inspection Report -

Number: 10259143  
From: 19.03.2026

"Business Premium" package incl. navigation system	Diversity antenna for FM reception
12-V outlet in center console rear and in luggage compartment	Door trim panel in leather look
2 beverage holders in front with cover	Driver alert system
2 USB-C ports in the front, 1 USB-C charging socket on the center console in rear, charging capacity up to 45 W	Driver and front passenger airbag with front passenger airbag deactivation
230-V outlet in center console in rear	Driving on the right
3 head restraints in rear	Dual-clutch transmission DSG DQ381
3-point seat belt for center rear seat	Dynamic Road Sign Display
3-point seat belts for outer rear seats	Electric auxiliary air heater
3-point seat belts in front with height adjustment and seat belt pretensioners	Electromechanical parking brake with Auto Hold function
4 alloy wheels "Sepang" 6.5J x 16	Electromechanical speed-sensitive power steering
4-cylinder diesel engine 2.0 l	Electronic engine sound
4-cylinder diesel engine 2.0 l TDI, 110 kW	Electronic immobilizer
7-speed automatic or DSG note: family EDF	Electronic Stability Control and electromechanical brake booster
8 speakers	Elimination of nameplate for engine designation on luggage compartment lid
Adaptive Cruise Control ACC stop & go incl. speed limiter	Emergency call service; no registration required, service is activated upon delivery
Air Care Climatronic 3 zone automatic climate control w/ allergen filter, enhanced air filter a. controls in rear	Emission standard EU6 AP
Alternator 140 A	Equipment options subset for Germany
App-Connect incl. App-Connect Wireless for Apple CarPlay and Android Auto	Exterior mirrors, power-adjustable and heated, surround lighting, auto-dimming on driver side
Aspherical exterior mirror on driver side	First aid kit, warning triangle and safety vest
Aut. headlight control w/ separate daytime running light, Leaving Home and manual Coming Home feature	Folding luggage compartment floor
Auto-dimming interior rearview mirror	Front center armrest, height- and longitudinally adjustable, w/ storage comp., 2 vents w/ chrome louvers in rear
Automatically-heated washer nozzles in front	Front seats with height adjustment, ergoComfort seat on driver side, with electrical backrest adjustment
Autonomous Emergency Braking Front Assist (for Adaptive Cruise Control ACC up to 210 km/h)	Front vent and rotary light switch illuminated, with chrome bezel
Basic equipment variant	Front-wheel drive
Battery 420 A (70 Ah)	Fuel system for diesel engine
Body-colored lower side trims	Fuel tank with a volume of 66 l
Bumpers with body-colored decorative trims	Gearshift knob in leather
Business	Headlight range control
Carpet mats in front and rear	Heated front seats
Carrier frequency 433.92 MHz-434.42 Mhz	Hill Start Assist
Category 0	Illuminated vanity mirror in sun visors, extractable sun visors
Child safety lock	Initial standard fuel filling
Chrome trims on the side windows	Inserts and inner sides of bolsters of front seats and outer rear seats in leather "Vienna"
Curtain airbag system for front and rear passengers incl. side airbags in front	Instrument cluster with electronic speedometer, odometer and trip odometer, tachometer
Decorative inserts "Cross Hatch" for dashboard and door trim panels	Interior lights with switch-off delay and dimmer, 2 LED reading lights in front and 2 in rear
Decorative inserts "Piano Black" for center console	ISOFIX anchorage points for mounting 2 child seats on rear seats, also for i-Size child seats
Digital radio reception DAB+	Keyless Start without SAFELOCK
Disc brakes in front	Laminated safety glass windshield, heat- and sound-insulating
Disc brakes in rear	



# Assessment

- Vehicle Inspection Report -

Number: 10259143  
From: 19.03.2026

Leather package "Vienna" with top comfort seats in front	Refrigerant R1234yf
Leather-wrapped multi-function steering wheel with shifting paddles	Regional code " ECE " for radio
LED entry/warning lights in front doors	Remote unlocking for tailgate/trunk lid
LED front fog lamps and cornering light	Right exterior mirror, convex
LED headlamps with LED separate daytime running light	Roof rails in Black
LED light unit in front footwell	Safety-optimized front head restraints, longitudinally and height adjustable
LED rear combination lamps	Semi-automated driving assistance TravelAssist and lane keeping system Lane Assist
Left-hand drive	Service indicator 30 000 km or 2 years (variable)
License plate carrier in front and rear (ECE)	Shock absorption in front
LongLife Service Regime	Small navigation system M&I (Media & Internet package)
Luggage compartment cover extractable and removable	Special identification label for EC for M1 passenger vehicles
Lumbar supports in front, power- adjustable on driver side, massage feature on driver side	Sports comfort seats in front
Manual in German (Germany)	Standard battery/alternator capacity
Mass damper for steering wheel, 36 Hz	Standard climatic zones
Mistral Gray headliner	Standard engine starter
Mobile phone interface "Comfort" with inductive charging feature	Standard manufacturing sequence
Multifunction camera	Standard paint coating
Multi-function display "Premium" with multi-color display	Standard pedal cluster
Navigation system "Discover Media" incl. Streaming & Internet	Standard wheel bolts
Net partition	Start-stop system with generative braking
No special edition	Suspension range 34 installation control only, no requirement forecast
No special purpose vehicle, standard equipment	Textile luggage compartment lining
Non-folding front passenger seat backrest	Tire Mobility Set: 12-volt compressor and tire sealant
Non-smoker's package: tray and 12-V outlet in front	Tire Pressure Monitoring System
Not hot country	Tires 215/60 R16, rolling resistance class A
Online service, with OCU, with head unit coding, without engine immobilizer interconnection	Tires without specification of tire brand
Operating permit, alteration	Tool kit and jack
Park Distance Control - warning signals for obstacles in the front and rear	Transport protection film (minimum protection) with additional transport protection measures
Part set without country-specific prescriptive standard	Two-tone horn
Pedestrian monitoring	Type approval country Germany
Plastic loading edge protection	Unsplit rear bench seat, asymmetric folding backrest, center armrest with storage comp. and load-through hatch
Plastic scuff plates in door apertures	Vehicle class differentiation -3G0-
Preparation for We Connect and We Connect Plus	Vehicles with special upgrade measures
Privacy glass for rear side windows and rear window	Wagon
Proactive passenger protection system in combination with Front Assist	Warning signal and warning light for front and rear seat belts not fastened
Radio	Weight range 3 installation control only, no requirement forecast
Rain sensor	Wheelbase
Rear exhaust tailpipe (standard)	Winter wheels (additional), 4 steel wheels 6.5J x 16, AirStop® snow tires 215/60 R16 H, wheel trims
Rear fog light on one side, back-up light on both sides	With electronic steering column lock
Rear shock absorption, basic version 1	Without activated carbon canister with SCR
Rear view camera system	



# Assessment

- Vehicle Inspection Report -

Number: 10259143  
From: 19.03.2026

Without Adaptive Chassis Control  
Without add. lights (interior lighting)  
Without additional front underbody guard  
Without alternative drive system  
Without auxiliary heater/parking heater  
Without CD/DVD for navigation  
Without charging cable  
Without child seat  
Without clock  
Without delivery equipment  
Without differential lock  
Without ECO function  
Without electric motor (hybrid)  
Without fire extinguisher  
Without front passenger seat control  
Without garage door opener  
Without headlamp washer system  
Without head-up display  
Without integrated toll system  
Without lane change assist  
Without light control  
Without locking and starting systems  
Without preparation for rotating beacon/siren combination  
Without preparation for two-way radio installation  
Without preparation for VTS (vehicle tracking system)  
Without rear spoiler  
Without roll-up sunshade  
Without roof insert (standard roof)  
Without seat ventilation/massage seat  
Without second battery  
Without special body measures  
Without tie down straps/net/pocket  
Without trailer hitch  
Without vehicle inlet  
Without voice control



# Assessment

- Vehicle Inspection Report -

 Number: 10259143  
 From: 19.03.2026

## » Tyres

### MOUNTED TYRES

Make	Location	Position	Type	Rim	Dimensions	Profile depth
Bridgestone	Front	Left	Summer	Aluminium	215/60 R 16 95 V	4.0 mm
Bridgestone	Front	Right	Summer	Aluminium	215/60 R 16 95 V	4.0 mm
Bridgestone	Rear	Left	Summer	Aluminium	215/60 R 16 95 V	3.0 mm
Bridgestone	Rear	Right	Summer	Aluminium	215/60 R 16 95 V	3.0 mm

**Permitted:** Yes

**Roadworthy:** Yes

### UNMOUNTED TYRES

Make	Location	Position	Type	Rim	Dimensions	Profile depth
Pirelli			Winter	Aluminium	215/60 R 16 95 H	4.0 mm
Pirelli			Winter	Aluminium	215/60 R 16 95 H	4.0 mm
Pirelli			Winter	Aluminium	215/60 R 16 95 H	5.0 mm
Pirelli			Winter	Aluminium	215/60 R 16 95 H	5.0 mm

**Permitted:** Yes

**Roadworthy:** Yes

### SPARE/EMERGENCY TYRE & ACCESSORIES

**Toolkit present:** Yes

**Repair kit present:** Yes

**Repair kit expiration date:** 10.2026

**Compressor present:** Yes

**Jack present:** Yes



# Assessment

- Vehicle Inspection Report -

Number: 10259143  
From: 19.03.2026

## » Devaluation Factors

Nr	Location	Damage type	Repair type
1	Bumper F	Scratch(es)	Paint
2	Preparationtime bodywork	Paint preparation	Execute
3	Inner door sill RL	Scratch(es)	Paint
4	Inner door sill RR	Scratch(es)	Paint
5	MOT certificate	Expired	Renew
6	Outer door handle FL	Scratch(es)	Paint
7	Outer door handle FR	Scratch(es)	Paint
8	Door trim FR	Scratch(es)	Paint

## » Usage Damages

Nr	Location	Damage type	Repair type
1	Bumper spoiler F	Scratch(es)	Acceptable
2	Outside rear-view mirror housing L	Stone chip(s)	Acceptable
3	Side wall RR	Dent(s)	Acceptable
4	Roof pillar R	Stone chip(s)	Acceptable
5	Floor protection FL	Scratch(es)	Acceptable

## » Missing Parts

Nr	Location	Damage type	Repair type
1	Headrest	Missing	Replace



# Assessment

- Vehicle Inspection Report -

Number: 10259143  
From: 19.03.2026

## » Commercial devaluation

<b>Known previous damages:</b>	Yes
<b>Previous damages detectable:</b>	No
<b>Repainting present:</b>	No
<b>Paint thickness measurement performed:</b>	Yes - no abnormalities/deviations

Nr	Location	Damage	Repair type	Repair cost
1	Other	Liability loss		€ 1,400.00
<b>Total without VAT:</b>				€ 1,400.00

### PAINTTHICKNESS MEASUREMENT RESULTS

The measured values were in the usual range.

At least 3 measurements were carried out per component.



# Assessment

Number: 10259143  
From: 19.03.2026

- Vehicle Inspection Report -

## » Notes On The Assessment

**Details of the assignment and the scope of the assessment:**

The order was placed to prepare a condition report on the described vehicle.

The vehicle condition assessment was carried out in accordance with the order on the basis of the standards for vehicle assessments specified by the client. The expert makes the findings in the individual case on the basis of his own expertise and at his own expert discretion.

**Vehicle identification:**

WVWZZZ3CZPE026429

VIN checked and matches documentation

**Vehicle condition:**

Well maintained general condition

**Inspection condition:**

Sufficient

**Lifting platform/lifting equipment used:**

Yes

**Testdrive carried out:**

No

**Engine test carried out:**

Yes



# Assessment

- Vehicle Inspection Report -

Number: 10259143  
From: 19.03.2026

## » Remarks

This copy was generated electronically. It is valid without an original signature.



# Assessment

- Vehicle Inspection Report -

Number: 10259143  
From: 19.03.2026

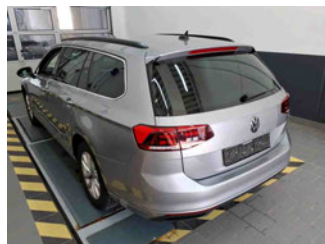
## » Commercial Pictures



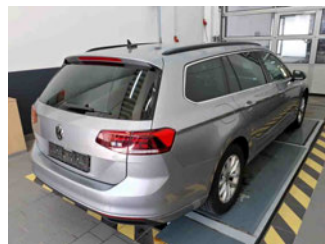
Front Left 3/4



Front Right 3/4



Rear Left 3/4



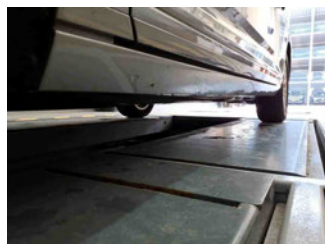
Rear Right 3/4



Mileage



Tools



Sill outer L



Sill outer R



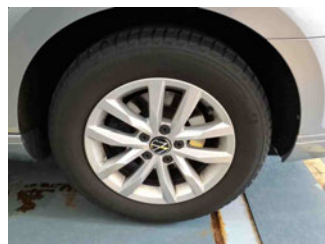
Chassis nr



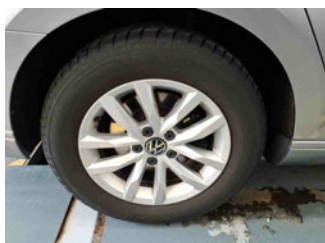
Wheel FL



Wheel FR



Wheel RL



Wheel RR



Additional wheel 1



Additional wheel 2



Additional wheel 3



Additional wheel 4



Central console



Engine compartment



Documents



# Assessment

- Vehicle Inspection Report -

Number: 10259143  
From: 19.03.2026



Interior arrangement



Registration Certificate



History Maintenance



Interior - front



Interior - rear



Tirefit expiration date



GPS/Radio



# Assessment

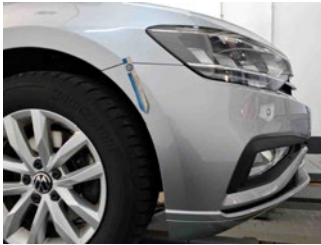
- Vehicle Inspection Report -

Number: 10259143  
From: 19.03.2026

## » Devaluation Damages

### DEVALUATION FACTORS

1 - Bumper F - Scratch(es) - Paint

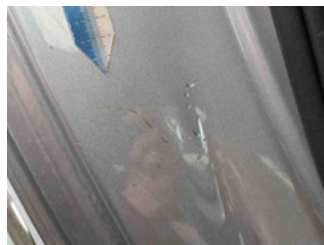
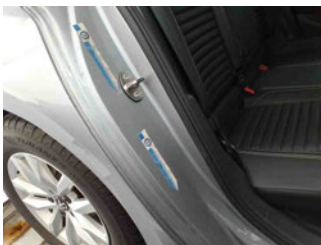


2 - Preparationtime bodywork - Paint preparation - Execute

3 - Inner door sill RL - Scratch(es) - Paint



4 - Inner door sill RR - Scratch(es) - Paint



5 - MOT certificate - Expired - Renew



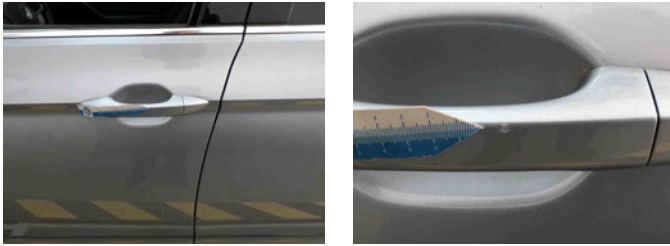


# Assessment

- Vehicle Inspection Report -

Number: 10259143  
From: 19.03.2026

## 6 - Outer door handle FL - Scratch(es) - Paint



## 7 - Outer door handle FR - Scratch(es) - Paint



## 8 - Door trim FR - Scratch(es) - Paint



## **USAGE DAMAGES**

## 1 - Bumper spoiler F - Scratch(es) - Acceptable



## 2 - Outside rear-view mirror housing L - Stone chip(s) - Acceptable





# Assessment

- Vehicle Inspection Report -

Number: 10259143  
From: 19.03.2026

## 3 - Side wall RR - Dent(s) - Acceptable



## 4 - Roof pillar R - Stone chip(s) - Acceptable



## 5 - Floor protection FL - Scratch(es) - Acceptable



## **MISSING PARTS**

## 1 - Headrest - Missing - Replace

