

Expertise

Protocol number: 46103811
Order No. / Reference: 26445776
Inspection date: 18 Jun 2026

Manufacturer: Audi

Model: A6 50 TFSI e quattro S tronic design

VIN: WAUZZZF23PN062741



Vehicle details

Manufacturer / Type / Model / Equipment

Audi A6 50 TFSI e quattro S tronic design

Vehicle Identification number WAUZZZF23PN062741

Mileage (Read) 98,963 km

First registration 5 Jun 2023

Number of holders 2

Next periodical technical inspection 06/2026

(Report not on hand)

Power / Engine displacement 195 kw / 1,984 ccm

Fuel type / Cylinder Hybr.B/E ext.auf1 / 4

Gearbox / Number of gears Automatic / 7

Type of drive All-wheel drive

Type of vehicle Saloon car

Colour / colour code Florettsilber Metallic

Doors / Seats 4 / 5

Upholstery type Leather

Colour of upholstery Black

Re-import no

readiness to drive Roadworthy



Vehicle details

Maintenance booklet / proof	digital proof / complete	Next maintenance in	22,600 km
Last service on / at	04/2026 at 93,255 km		
Key is / should be	2 / 2	FZG documents	ZB#2 (B) was available (copy), ZB#1 (S) was not available.
		Letter No.	GS531544
Previous damage / Accident	None detectable	Repainting	None detectable
Inspection conditions	sufficient	Lifting equipment / pit	yes
Test drive	Not performed	Engine function test	Performed
readiness to drive	Roadworthy		
Manufacturer key number/ type code number	0588 / BZC 00880		
Emission standard	EURO6;WLTP;AP;PI/CI; M, N1 I	fine dust sticker	
Permitted total weight	2,610 kg	Empty weight	

Tyres

Mounted tyres

#	Tyre size	Type of tyre	Manufacturer	Tread depth
1)	245/45 R19 102Y	Summer tyres on Light alloy	Continental	6mm / 6mm
2)	245/45 R19 102Y	Summer tyres on Light alloy	Continental	7mm / 7mm

Additional tyres

#	Tyre size	Type of tyre	Manufacturer	Tread depth
1)	225/55 R18 102V	Winter tyres on Light alloy	Bridgestone	4mm / 4mm
2)	225/55 R18 102V	Winter tyres on Light alloy	Bridgestone	6mm / 6mm

Replacement

Typ	Tyre size	Type of tyre	Manufacturer	Tread depth
Tirefit		Expiration date 05/2028		

Legend: Tread depth information for the left tire is listed first, for the right tire it is listed second on the axle in the direction of travel.



Equipment

Standard equipment

- Airbag for driver and front passenger
- Acoustic vehicle warning system
- Anti-lock braking system (ABS)
- Audi connect emergency call & service m.connect Remote & Control (TFSI e)
- Audi virtual cockpit
- Exterior mirror housings in body color
- Fabric headliner
- e-tron compact charging system
- Electronic Stability Control (ESC)
- key fob
- Cruise control system including speed limiter
- Transmission: S tronic 7-speed
- Instrument panel and door trim, two-piece, single/multi-color
- 4-zone automatic climate control
- Headrests (4)
- Mode 3 charging cable
- Steering wheel: Double-spoke leather steering wheel with multifunction and paddle shifters
- MMI navigation with MMI touch response
- Ambient lighting package
- Non-smoking package
- Wheel: Tire pressure monitoring system
- Radio: MMI Radio plus with MMI touch response
- Sun visor on driver and passenger side
- Stationary air conditioning
- Phone: Audi smartphone interface
- Glazing: Rear window, rear door and side windows in clear glass
- Central locking
- Airbag: Front side airbags and head airbag system
- "quattro" all-wheel drive with ultra technology
- Audi connect navigation & infotainment
- Audi drive select
- Audi pre sense front
- Electrically adjustable and heated exterior mirrors
- third brake light
- Tachometer
- Door sills with aluminum inlay front and rear
- Driver information system with color display
- Automatically opening luggage compartment lid/manually opening luggage compartment lid
- Interior mirror dimming
- Interior elements in faux leather above
- ISOFIX child seat attachment and Top Tether for the outer rear seats
- AC Type 2 charging socket
- LED headlights
- Steering column, manually adjustable in height and axis
- front center armrest
- Otto particulate filter
- Package Gloss
- Progressive steering
- Wheel: Tire repair kit
- Seats: Standard front seats
- Lane Departure Warning
- Start-stop system
- Glazing: Windscreen in heat-insulating glazing
- Electronic immobilizer
- Thermal insulation glazing on the sides and rear



Extra equipment

- Audi connect key (The smartphone takes over the functions of the vehicle key: opening and closing the vehicle and starting the engine. Up to 5 digital vehicle keys can be given to other people via the myAudi app on the smartphone. In addition, temporary access and/or driving authorization can be granted via the Audi connect key card, thus it is not necessary to give the vehicle key or the smartphone to third parties (e.g., valet parking services).)
- Business Package (Assistance Package Tour: Adaptive Driving Assistant supports the driver with acceleration, braking, maintaining speed and distance, and lane keeping. Adaptive Cruise Control, Speed Limiter. Efficiency Assistant supports the driver with predictive driving. Parking Aid Plus, 4-zone automatic climate control, heated front seats, Audi phone box, automatically dimming interior mirror, automatically dimming exterior mirrors, adaptive windscreen wipers with integrated washer nozzles, high-beam assistant)
- Comfort stationary climate control (cools or heats the interior as needed before driving for a high level of climate comfort right from the moment you get in. Stationary climate control can be programmed or activated via the MMI or smartphone app, regardless of whether the vehicle is charging at the time. A "short climate control" cycle can be started when unlocking the vehicle with the remote key. Additional seat heating and ventilation, steering wheel and glass surface heating can be activated if these optional equipment has been selected.)
- Decorative inlays, birch wood, linear, grey-brown, natural (for instrument panel, door panels and center console)
- Electrically opening and closing tailgate (The tailgate can be opened electrically by pressing the button on the vehicle key, in the driver's door, or the soft-touch button on the tailgate handle. To close the tailgate: simply press the button on the inside of the tailgate, the button in the driver's door, or the button on the vehicle key. A6 Avant: Opening the tailgate in low-ceiling areas is made easier by a programmable opening angle.)
- Entry-level LED with logo projection at the front
- LED headlights: HD Matrix LED headlights with dynamic turn signals (daytime running lights, low beam, high beam, position lights, turn signals, cornering lights, all-weather lights, motorway lights, adaptive headlights, automatic headlight range control, intersection lights, headlight cleaning system, LED taillights with dynamic light display and dynamic turn signals)
- Paint finish: Metallic
- Radio accessories: USB ports with charging function in the rear (2 USB-C ports with charging function in the rear in addition to two further ports in the first row of seats. Easy connection using a USB cable, 15 watts output)
- Reversing camera (The reversing camera displays the area behind the vehicle on the upper display. Dynamic display elements such as a steering angle-dependent lane calculation assist with parking or maneuvering.)
- Roof box + base carrier
- Chassis with damper control (with electronically controlled adjustment of the dampers to different driving situations - dynamic or comfort-oriented damper basic setting, adjustable via Audi drive select - controlled shock absorbers and coil springs on the front and rear axles)
- Comfort key with sensor-controlled luggage compartment unlocking including anti-theft alarm system (The vehicle can be opened by operating the door handle without actively using the key. To lock the vehicle from the outside, simply touch one of the sensor buttons on the door handles. The drive authorization is also activated without actively using the comfort key. The driver must be inside the vehicle and have the comfort key with them. The engine is started and stopped using the engine start/stop button in the center console.)
- Control buttons in glossy black with haptic feedback and aluminum-look interior (control button strip in the center console and light buttons in glossy black, control button and light button strip with haptic feedback - light button strip including proximity sensor - control buttons for driver assistance systems, buttons for parking brake, auto-hold function, central locking front and rear, rear locking, frame around the interior door handles and window regulators in aluminum look)
- Glazing: Acoustic glazing for the side windows (improved external noise insulation through double glazing)
- Glazing: Windscreen in climate comfort/acoustic glazing, wirelessly heated (heated windscreen made of climate comfort/acoustic glass, facilitates rapid defrosting and ensures fog-free operation through surface heating without obstructing heating wires; with heated wiper blade rest; with viewing window for telepass devices)
- Package: Ambient lighting package plus (contour lighting front/rear doors, color-matched - ambient fabric lighting front/rear doors, color-matched - ambient lighting front center console, color-matched - contour lighting front center console, color-matched - contour lighting with illuminated quattro lettering (for all-wheel drive) on the instrument panel on the passenger side, color-matched - ambient lighting of the instrument panel)
- Package: Storage package (2 cup holders in the rear center armrest, luggage compartment net for fixing to the lashing eyes on the luggage compartment floor)
- Radio accessories: Bang & Olufsen Premium Sound System with 3D sound (sound reproduction via 16 speakers including 3D sound speakers, center speaker and subwoofer, 15-channel amplifier with a total output of 705 watts; spatial sound reproduction thanks to the 3D sound feature for the front seats. This is created by additional speakers in the A-pillars, the midrange speakers and Fraunhofer Symphoria technology. The 3D sound can be played back with all sources.)



- Seats: Individual contour front seats (with electric adjustment of seat height, seat longitudinal position, seat and backrest tilt and thigh support; pneumatic adjustment of seat and backrest side bolsters and pneumatic adjustment of lumbar support; manual adjustment of headrest height and distance as well as belt height; including memory function for driver and front passenger seats as well as exterior mirrors and steering wheel)
- Servo closing for doors (comfortable and safe door closing, automatically pulls doors that are not fully latched into the lock with the support of a servo motor)
- Wheel: Alloy wheels, multi-spoke design, contrast grey, partially polished (8.5 J x 19 with tires 245/45 R 19)
- Wheel: Winter alloy wheels, 5-arm design (8 J x 18 with tires 225/55 R 18)
- Seat covers in Valcona leather/Milano leather combination with piping (for individual contour seats in the front) (center section of the front seats and non-ventilated center section of the two outer rear seats in perforated Milano leather in black, sardine brown or pearl beige - side bolsters, middle rear seat, headrests, front center armrest and rear center armrest in Valcona leather - with contrast stitching and piping)
- Seats: Front seat ventilation (active seat ventilation of the seat and backrest center section of the driver and front passenger seats ensures a pleasant seating climate even at high outside temperatures by means of a fan and the intake of air; adjustable in 3 stages directly on the climate control unit; protection against excessive cooling through automatic supplemental heating of the seat heating; when seat ventilation is activated, the leather of the front seats is perforated)
- Steering wheel: Double-spoke leather steering wheel with multifunction, paddle shifters and steering wheel heating (paddle shifters allow manual gear changes. The steering wheel rim is also heated).

Brief expert findings

Documents submitted	At the time of the inspection, the vehicle registration certificate Part 2 (title) was available, but the vehicle registration certificate Part 1 (document) was not. (Copy)
VIN comparison	The vehicle identification number (VIN) was read from the vehicle and its conformity with the submitted documents was confirmed by the undersigned during the inspection.
Inspection	The inspection conditions were sufficient for the assessment of the vehicle. Lifting equipment and/or a pit were available for examining the vehicle.
Test drive	No test drive/shunting maneuver was carried out during the inspection of the vehicle.
Engine function test	An engine test run was performed.
readiness to drive	The vehicle was roadworthy at the time of inspection.

Value reducing factors

No.	Component group	Description
1	Wing mirror - right side	Cap - Scratch(es) - Smart repair
2	Rear bumper	Rear bumper - Scratch(es) - Smart repair
3	Wheel / tyres	Alloy rim - rear left side - Scratched - Loss in value
4	Side panel - rear right side	Side panel (Vogelkotverätzung) - Paint defect - Paint
5	Front bumper	Front bumper - Damaged - Repair and paint
6	Vehicle glazing	Windscreen - Broken / torn - Replace

Wear and tear

No.	Component group	Description
1	Door - rear right side	Door - Soiled - No deduction
2	Misc.	Main inspection (06.2026) - Due - No deduction

The vehicle shows signs of wear and tear commensurate with its age and use.

Missing parts

Description

Documents - Log book



Order/Scope of Order

An order was placed to prepare a sales report for the described vehicle. This report includes the following:

- Description of key vehicle information
- Documentation of equipment features
(Delivery by third-party service providers)
- Documentation of damage, defects, missing parts
- Documentation of prior damage, unrepaired prior damage, repainting
- A brief visual or functional inspection of the equipment details, if possible.
(Functional testing of driver assistance systems is not included in the scope of services!)
- a photographic documentation of the vehicle

Basis for the order

This product is based on the guidelines for vehicle returns and valuations published by Alphabet Fleet GmbH. The expert makes the specific findings in each individual case objectively, within the framework of the prescribed standards, based on their own expertise.

The vehicle inspection takes place in a fully assembled, unassembled state.

Damage or defects that can only be detected during disassembly/diagnostic work or through further investigation remain within the realm of prognostic risk. An increased risk exists due to concealed defects caused by fraudulent misrepresentation and which were not identifiable by the expert.

Damage or defects resulting from normal use or wear and tear of the vehicle will be accepted in accordance with the applicable standard.

There was no explicit identification or monetary consideration of the expected features within the product.

Features which, in their nature and extent, slightly exceed normal use but do not constitute unacceptable damage, will be documented and indicated as signs of wear, if applicable.

Damage or defects that, according to the applicable standard, can no longer be attributed to normal use or wear and tear are listed under "Value Reducing Factors" in the product description.

Depending on the product specification, a monetary ID can be provided. If this takes place, the costs can be 100% d or pro rata depending on the vehicle's age and mileage.

Previous damages

No apparent prior damage that had been repaired could be found on the vehicle.

Comments

- Wartungshistorie gemäß Auftraggeber Informationen.



Figure 1: Diagonal front (left)



Figure 2: Diagonal front (right)



Figure 3: Diagonal rear (left)



Figure 4: Diagonal rear (right)



Figure 5: Interior - front



Figure 6: Interior - rear



Figure 7: Instrument cluster



Figure 8: Instrument panel



Figure 9: Interior 360° view



Figure 10: Cargo area



Figure 11: Cargo area



Figure 12: VIN



Figure 13: Mounted tyres

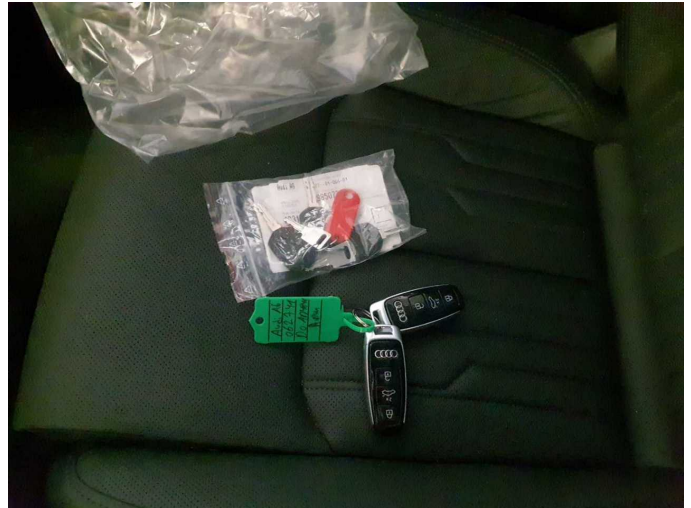


Figure 14: Documents

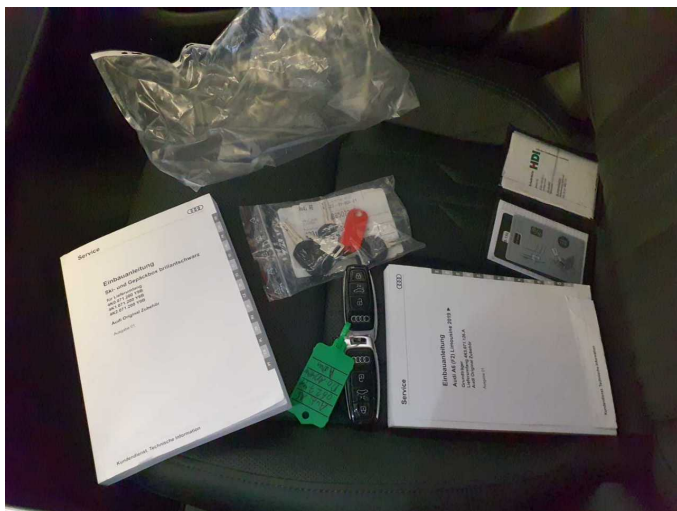


Figure 15: Documents



Figure 16: Additional tyres



Figure 17: Navigation



Figure 18: Misc.



Figure 19: Misc.



Figure 20: Misc.

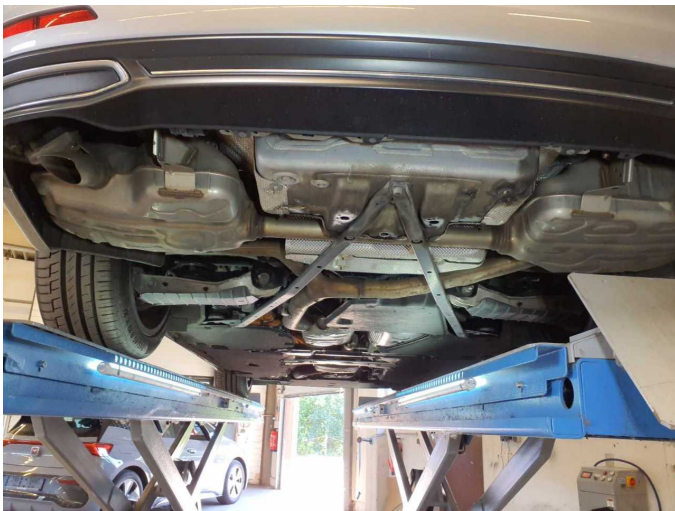


Figure 21: Misc.



Figure 22: Misc.

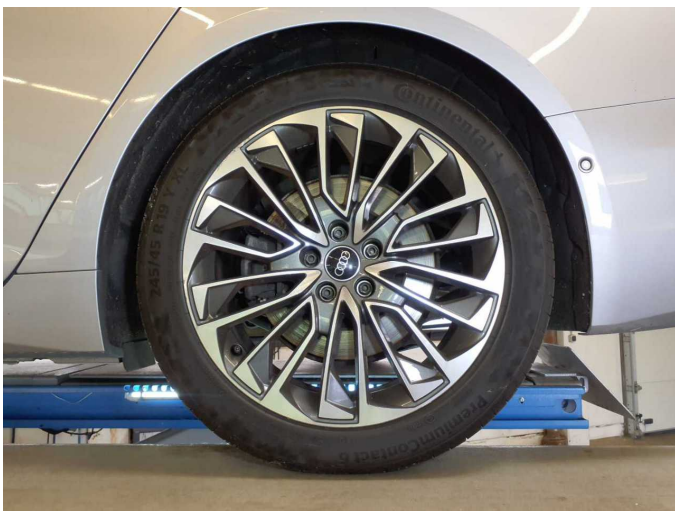


Figure 23: Misc.



Figure 24: Misc.



Figure 25: Misc.



Figure 26: Misc.

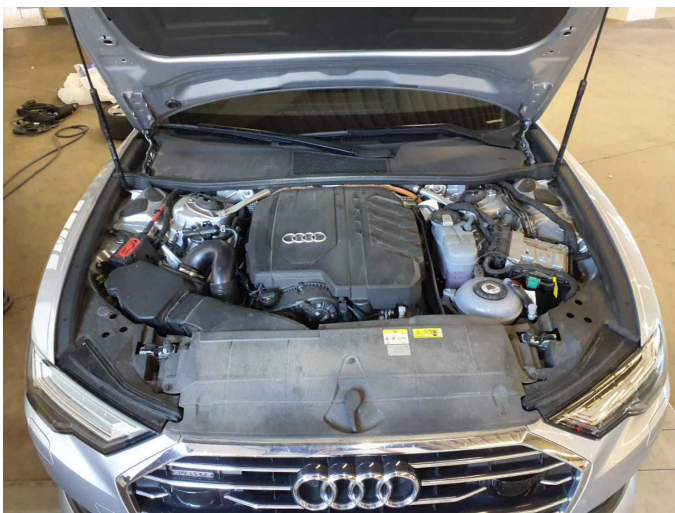


Figure 27: Misc.

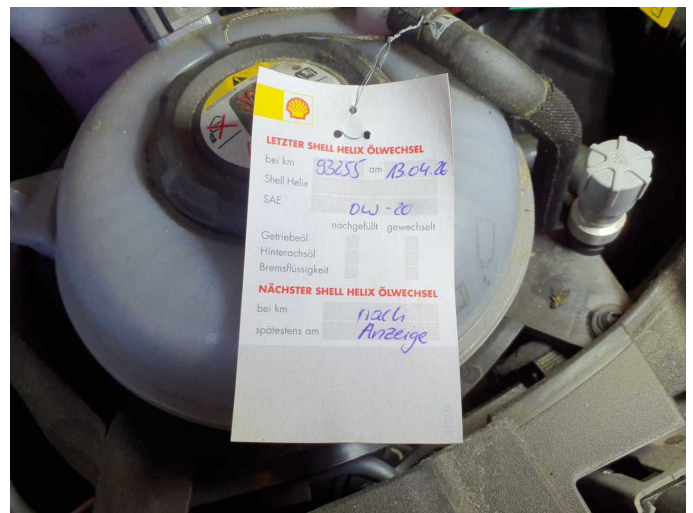


Figure 28: Misc.

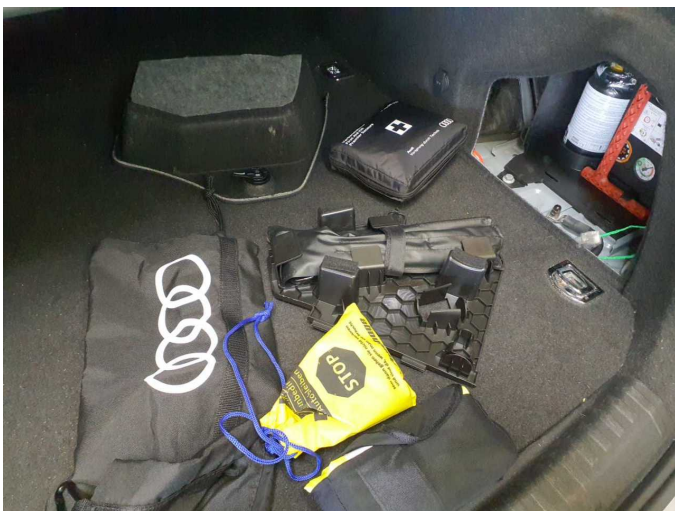


Figure 29: Misc.



Figure 30: Misc.



Figure 31: Misc.



Figure 32: Misc.



Figure 33: Misc.

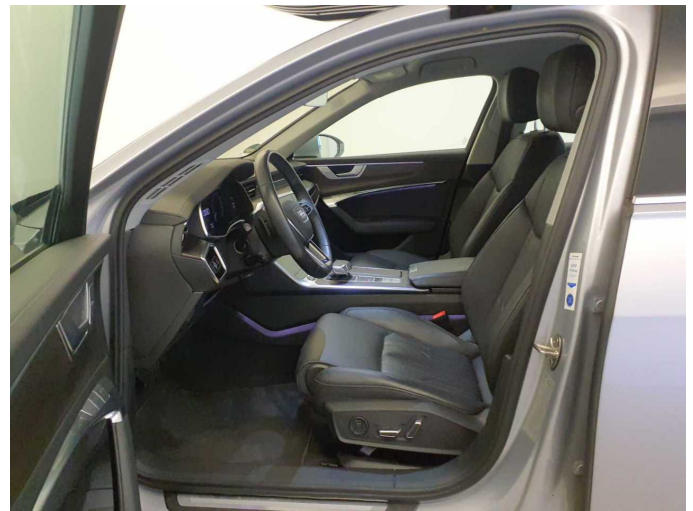


Figure 34: Misc.

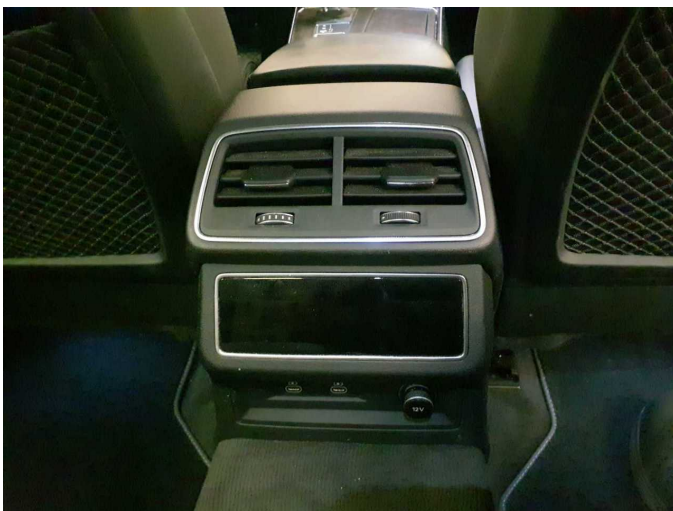


Figure 35: Misc.

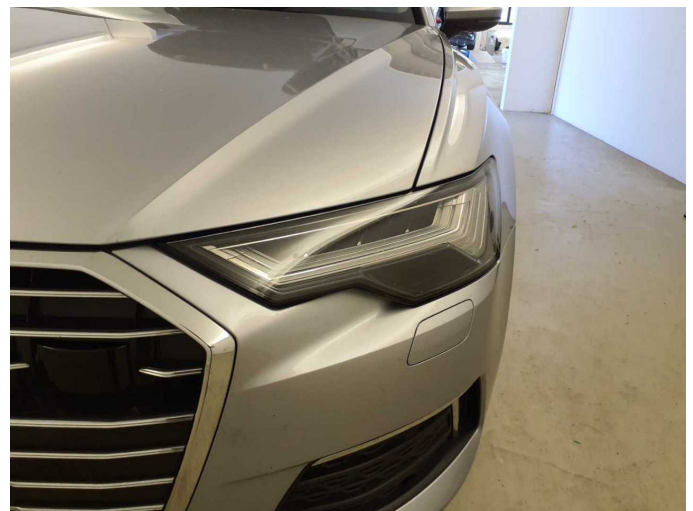


Figure 36: Misc.



Figure 37: Misc.



Damage 1: Wing mirror - right side: Cap - Scratch(es) - Smart repair



Damage 1: Wing mirror - right side: Cap - Scratch(es) - Smart repair



Damage 2: Rear bumper: Rear bumper - Scratch(es) - Smart repair



Damage 2: Rear bumper: Rear bumper - Scratch(es) - Smart repair



Damage 3: Wheel / tyres: Alloy rim - rear left side - Scratched - Loss in value



Damage 3: Wheel / tyres: Alloy rim - rear left side - Scratched - Loss in value



Damage 3: Wheel / tyres: Alloy rim - rear left side - Scratched - Loss in value



Damage 4: Side panel - rear right side: Side panel (Vogelkotverätzung) - Paint defect - Paint



Damage 4: Side panel - rear right side: Side panel (Vogelkotverätzung) - Paint defect - Paint



Damage 5: Front bumper: Front bumper - Damaged - Repair and paint



Damage 5: Front bumper: Front bumper - Damaged - Repair and paint



Damage 5: Front bumper: Front bumper - Damaged - Repair and paint



Damage 5: Front bumper: Front bumper - Damaged - Repair and paint



Damage 5: Front bumper: Front bumper - Damaged - Repair and paint



Damage 5: Front bumper: Front bumper - Damaged - Repair and paint



Damage 6: Vehicle glazing: Windscreen - Broken / torn - Replace



Damage 6: Vehicle glazing: Windscreen - Broken / torn - Replace



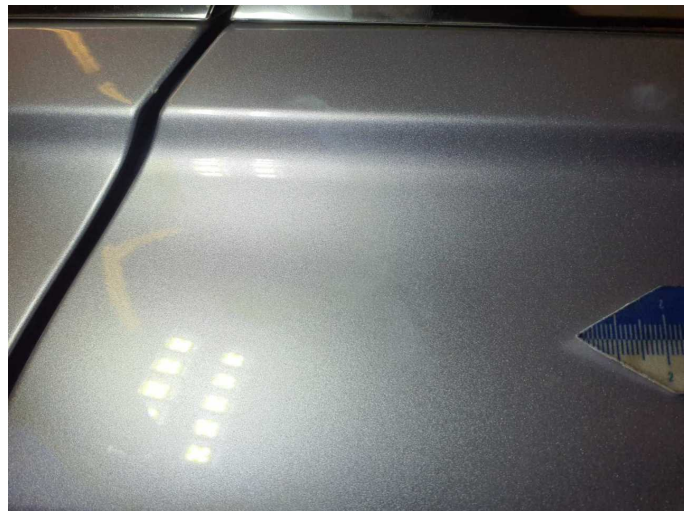
Damage 6: Vehicle glazing: Windscreen - Broken / torn - Replace



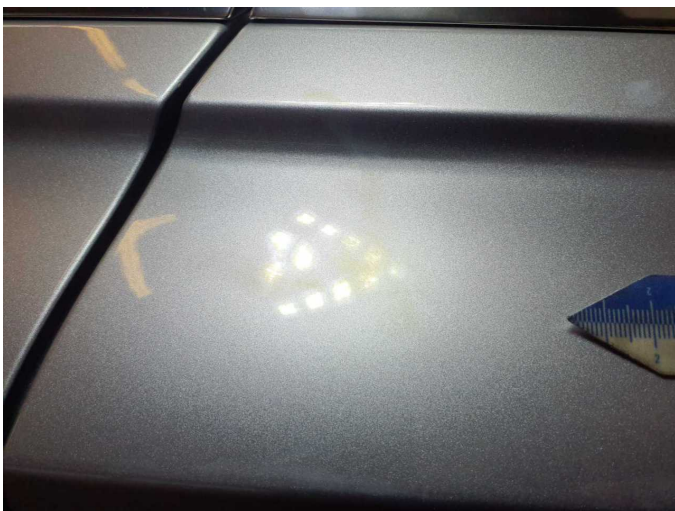
Damage 6: Vehicle glazing: Windscreen - Broken / torn - Replace



Wear and tear 1: Door - rear right side: Door - Soiled - No deduction



Wear and tear 1: Door - rear right side: Door - Soiled - No deduction



Wear and tear 1: Door - rear right side: Door - Soiled - No deduction



Wear and tear 1: Door - rear right side: Door - Soiled - No deduction



Wartungshistorie

(gemäß Auftraggeber Informationen)

Fahrgestellnummer: WAUZZZF23PN062741

Hersteller / Modell: AUDI AUDI A6 50 TFSI e quattro S tronic design

Datum	KM-Stand	Beschreibung
13.04.2026	93.255	Luftfiltereinsatz ern; Motoröl b. Wartung; Ölfilter ern; Regelwartungsdienst; Wartung Sonstiges; Wartung Sonstiges
09.07.2025	61.348	Bremsbelagfühler ern; Bremse Sonstiges; Bremsflüssigkeit; Bremsflüssigkeit ern; Bremsklötze hinten; Bremsklötze vorne; Bremsscheiben + Klötze h; Bremsscheiben + Klötze v; Bremsscheiben hinten; Bremsscheiben vorne; Getriebeöl ern/prüfen; Motoröl b. Wartung; Ölfilter ern; Regelwartungsdienst; Wartung Sonstiges; Wartung Sonstiges; Zündkerzen ern
20.06.2024	31.805	Motoröl b. Wartung; Ölfilter ern; Regelwartungsdienst; Wartung Sonstiges