

## Expertise

Protocol number: 46024982  
Order No. / Reference: 26505250  
Inspection date: 18 Jun 2026

Manufacturer: Skoda

Model: Karoq 1.5 TSI ACT DSG Clever

VIN: TMBJR7NU8N5010252



### Vehicle details

#### Manufacturer / Type / Model / Equipment

Skoda Karoq 1.5 TSI ACT DSG Clever

**Vehicle Identification number** TMBJR7NU8N5010252

**Mileage (Read)** 175,641 km

**First registration** 24 Feb 2022

**Number of holders** 1

**Power / Engine displacement** 110 kw / 1,498 ccm

**Fuel type / Cylinder** Petrol / 4

**Gearbox / Number of gears** Automatic / 7

**Type of drive** Front drive

**Type of vehicle** SUV

**Colour / colour code** Metal Grey Metallic (F7Y)

**Doors / Seats** 5 / 5

**Upholstery type** Cloth

**Colour of upholstery** Black-Anthracite

**Re-import** no

**readiness to drive** Roadworthy



## Vehicle details

<b>Maintenance booklet / proof</b>	Non-existent	<b>Next maintenance in</b>	-100 km
<b>Key is / should be</b>	2 / 2	<b>FZG documents</b>	ZB#2 (B) was available (copy), ZB#1 (S) was not available.
		<b>Letter No.</b>	GG183682
<b>Previous damage / Accident</b>	None detectable	<b>Repainting</b>	None detectable
<b>Inspection conditions</b>	sufficient	<b>Lifting equipment / pit</b>	yes
<b>Test drive</b>	Not performed	<b>Engine function test</b>	Performed
<b>readiness to drive</b>	Roadworthy		
<b>Manufacturer key number/ type code number</b>	8004 / ASO 02363		
<b>Emission standard</b>	EURO6;WLTP;AP;PI/CI; M, N1 I	<b>fine dust sticker</b>	
<b>Permitted total weight</b>	1,927 kg	<b>Empty weight</b>	

## Tyres

### Mounted tyres

#	Tyre size	Type of tyre	Manufacturer	Tread depth
1)	215/55 R17 94V	Summer tyres on Light alloy	Goodyear	5mm / 5mm
2)	215/55 R17 94V	Summer tyres on Light alloy	Goodyear	6mm / 6mm

### Replacement

Typ	Tyre size	Type of tyre	Manufacturer	Tread depth
Tirefit		Expiration date 05/2025		

**Legend: Tread depth information for the left tire is listed first, for the right tire it is listed second on the axle in the direction of travel.**

TÜV SÜD Auto Partner GmbH  
Wiesenring 2  
04159 Leipzig

Inspection location  
Hartmann Fleet Professionals GmbH  
Industriestraße 11  
36272 Niederaula



## Equipment



## Standard equipment

- Storage compartment on the left wheel arch
- Storage compartments behind the wheel arches in the trunk
- Removable waste bin for the door panel
- Airbag for driver and front passenger (passenger airbag can be deactivated)
- Airbag, driver's knee airbag
- Airbag, head airbags
- Airbag, front side airbags
- Allergen filter
- Extended warranty for 3 years, max. 50,000 km
- Traction control (ASR)
- Electrically adjustable and heated exterior mirrors with integrated side indicators
- Hydraulic brake assist
- Cargo elements in the trunk
- Roof rails, silver (chrome trim strips on the side windows)
- Anti-theft alarm system (with SAFE system, interior monitoring and tilt sensor)
- EASY START, keyless start-stop system
- Electronic parking brake including auto-hold function
- Electronic transverse differential lock (XDS+)
- Driving light assistant and rain sensor ((tunnel light, coming and leaving home function))
- Front radar assistant including city emergency braking function with pedestrian detection
- Transmission: 7-speed dual-clutch transmission (DSG)
- Green tec (start/stop system and brake energy recuperation)
- Aero rear window wiper including windshield washer system
- Kessy - keyless entry and start-stop system
- Electric child safety lock (door opening)
- Reversible boot mat
- Trunk cover, fixed
- Front and rear headrests are height-adjustable.
- LED headlights with LED daytime running lights (incl. adaptive front headlights (AFS): lighting system with fully automatic and situation-dependent light control (city, country road, motorway and bad weather mode), - LED fog lights with cornering lights, - automatic headlight range control)
- Front center armrest, including storage compartment
- MSR (Motor drag torque control)
- Network program in the trunk
- Otto particulate filter
- Package: LED lighting package (LED ambient lighting on the dashboard and front doors - LED interior lighting (footwell lighting, vanity mirrors, reading lights, entry lighting, diffusion lighting) - projection of the SKODA lettering from the bottom of the door onto the ground (front doors) - Dark-brushed trim strip)
- Radio accessories: 8 speakers
- Radio accessories: Digital radio reception DAB+
- Radio accessories: USB port in the center console
- Storage compartment on the dashboard (closed)
- Storage compartments (ticket holder on the windshield, 4 roof grab handles, rear with coat hooks, coat hooks on the B-pillar, high-visibility vest compartment in the front doors, glasses compartment in the headliner, storage compartments in the door panels (front) with bottle holder (1.5l), cup holder in the front center console, storage pockets on the front seatbacks (not for Active), storage compartment including umbrella under the passenger seat (not for Active))
- Anti-lock braking system (ABS)
- Electrically folding exterior mirrors including interior and exterior mirrors with automatic dimming.
- Hill start assist
- Care Connect: Proactive services (10-year term) (Remote Access (1-year term))
- Clever decorative inlay
- Tachometer
- Third brake light (in the rear spoiler (LED))
- eCall (automatic emergency call function in case of an accident with airbag deployment)
- ESC Electronic Stability Control
- Electric windows front and rear (including anti-pinch protection and child safety lock)
- Floor mats
- Cruise control
- Tinted windows
- Illuminated glove compartment
- Heated rear window
- Automatic interior mirror dimming
- ISOFIX preparation on the outer rear seats (including top tether)
- Climatronic air conditioning (2-zone) (fully automatic, separately adjustable for driver and front passenger, including humidity sensor, odor and allergen filter and air-conditioned glove compartment)
- LED taillights in crystal glass look (with LED brake light, tail light and license plate light)
- Steering wheel: Leather steering wheel with multifunction buttons (height and reach adjustable - gearshift lever with leather elements)
- Rear center armrest with cup holders and pass-through option
- Multifunction display with Maxi-Dot display (with, among other functions: time, outside temperature, current consumption, average consumption, distance traveled, driving time, average speed, fuel range, service interval indicator, door and trunk lid warning, display of information from radio, navigation system and telephone (if available))
- Upholstery: Cloth
- Radio: Infotainment system Bolero (Bolero music system - Capacitive 8" color display - SmartLink+ - Wireless SmartLink - Voice control - Comfort hands-free phone system - Phonebox with inductive charging function (connection via external antenna))
- Tire mobility kit (tire repair spray incl. compressor)



- Radio accessories: Wireless SmartLink (Apple CarPlay) (MirrorLink, Apple CarPlay, Android Auto)
- Wheels: 17" alloy wheels "Aronia AERO Platinum" (wheels 7.0J x 17 ET 45 - tires 215/55 R17 94V)
- Rear seat backrest split 60:40, foldable
- Heated windshield washer nozzles, front
- Electromechanical power steering
- Karoq safety belts (Height-adjustable three-point front seat belts with belt tensioners - 3 three-point rear seat belts - Belt fastening indicators for front and outer rear seats)
- Skoda Care Connect (SOS emergency call function (Emergency Call including automatic activation in the event of an accident with airbag deployment) - Mobility service (connection option for rapid assistance in case of breakdown) - Information service (connection option to the hotline for all questions regarding vehicle functions) - Free remote vehicle access for 1 year (Remote Access) with access to vehicle data and functions via smartphone, e.g., parking position, hazard warning lights activation, current fuel level)

- Tire pressure monitoring (detects when tire pressure drops below the critical threshold and warns the driver. The system uses data from the anti-lock braking system (ABS) and the rotation sensors of each wheel. If the tire pressure drops, the radius of the tire changes compared to the other wheels.)
- Seats: Heated front and outer rear seats
- Seats: Adjustable lumbar support in the front seats
- Seats: Front seats, height adjustable
- Speed limiter
- 12V socket - in the center console and in the trunk
- Bumpers partially painted in body color
- SUNSET (rear window and rear side windows tinted dark)
- Front and rear door sill trims
- Lashing eyes in the trunk
- Immobiliser
- Central locking with remote control

### Extra equipment

- Adaptive Cruise Control (ACC) (control range up to 210 km/h) (replaces cruise control)
- Electric tailgate operation with comfort opening
- Paint finish: Metallic
- Package: Business Amundsen (Clever) (Amundsen dynamic radio navigation system - Color multifunction display in the instrument cluster - Driver fatigue detection - Luggage net partition - Infotainment Online (3-year term))
- Preparation for a trailer hitch (including trailer stabilization)

- Heated windshield
- Digital instrument cluster (Virtual Cockpit)
- High beam assist
- Heated steering wheel (DSG)
- Front and rear parking sensors
- Rear view camera
- Power outlet: 230-volt socket and 2 USB ports (on the back of the front center armrest)

### Brief expert findings

Documents submitted	At the time of the inspection, the vehicle registration certificate Part 2 (title) was available, but the vehicle registration certificate Part 1 (document) was not. (Copy)
VIN comparison	The vehicle identification number (VIN) was read from the vehicle and its conformity with the submitted documents was confirmed by the undersigned during the inspection.
Inspection	The inspection conditions were sufficient for the assessment of the vehicle. Lifting equipment and/or a pit were available for examining the vehicle.
Test drive	No test drive/shunting maneuver was carried out during the inspection of the vehicle.
Engine function test	An engine test run was performed.
readiness to drive	The vehicle was roadworthy at the time of inspection.

### Value reducing factors

No.	Component group	Description
1	Equipment	Tirefit filler - Expired - Replace
2	Door - front left side	Door edge - Scratch(es) - Smart repair
3	Bonnet	Bonnet - Damaged - Smooth repair work
4	Sill - right side	Sill - Scratch(es) - Smart repair
5	Door - rear right side	Door - Scratch(es) - Smart repair
6	Side panel - rear right side	Sill - Scratch(es) - Smart repair
7	Misc.	Inspection / maintenance (Mehrkosten möglich) - Due - Perform



## Wear and tear

No.	Component group	Description
1	Misc.	Main inspection - No evidence - No deduction

The vehicle shows signs of wear and tear commensurate with its age and use.

## Missing parts

### Description

Equipment - Umbrella  
Documents - Service book

## Order/Scope of Order

An order was placed to prepare a sales report for the described vehicle. This report includes the following:

- Description of key vehicle information
- Documentation of equipment features  
(*Delivery by third-party service providers*)
- Documentation of damage, defects, missing parts
- Documentation of prior damage, unrepaired prior damage, repainting
- A brief visual or functional inspection of the equipment details, if possible.  
(*Functional testing of driver assistance systems is not included in the scope of services!*)
- a photographic documentation of the vehicle

## Basis for the order

This product is based on the guidelines for vehicle returns and valuations published by Alphabet Fleet GmbH. The expert makes the specific findings in each individual case objectively, within the framework of the prescribed standards, based on their own expertise.

The vehicle inspection takes place in a fully assembled, unassembled state.

Damage or defects that can only be detected during disassembly/diagnostic work or through further investigation remain within the realm of prognostic risk. An increased risk exists due to concealed defects caused by fraudulent misrepresentation and which were not identifiable by the expert.

Damage or defects resulting from normal use or wear and tear of the vehicle will be accepted in accordance with the applicable standard.

There was no explicit identification or monetary consideration of the expected features within the product.

Features which, in their nature and extent, slightly exceed normal use but do not constitute unacceptable damage, will be documented and indicated as signs of wear, if applicable.

Damage or defects that, according to the applicable standard, can no longer be attributed to normal use or wear and tear are listed under "Value Reducing Factors" in the product description.

Depending on the product specification, a monetary ID can be provided. If this takes place, the costs can be 100% or pro rata depending on the vehicle's age and mileage.

## Previous damages

No apparent prior damage that had been repaired could be found on the vehicle.



Figure 1: Diagonal front (left)



Figure 2: Diagonal front (right)



Figure 3: Diagonal rear (left)



Figure 4: Diagonal rear (right)



Figure 5: Interior - front



Figure 6: Interior - rear



Figure 7: Instrument cluster



Figure 8: Instrument panel



Figure 9: Interior 360° view



Figure 10: Cargo area



Figure 11: VIN



Figure 12: Mounted tyres



Figure 13: Documents



Figure 14: Navigation

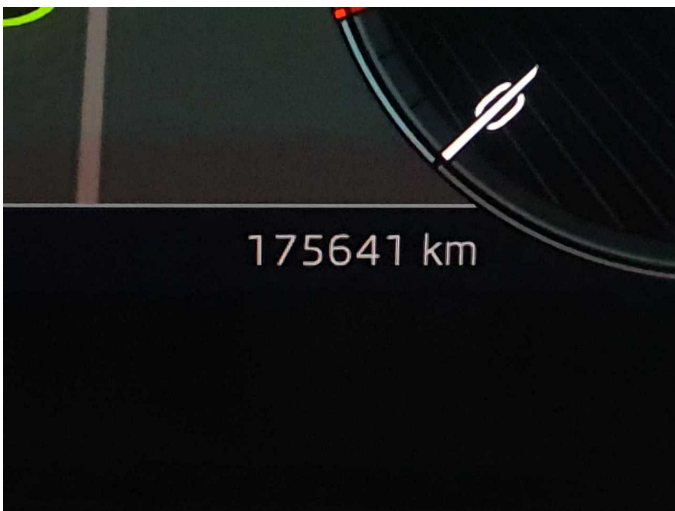


Figure 15: Misc.



Figure 16: Misc.



Figure 17: Misc.

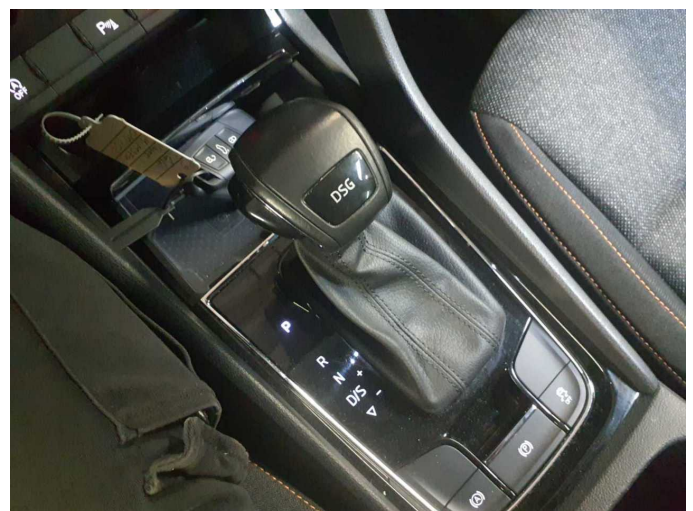


Figure 18: Misc.



Figure 19: Misc.



Figure 20: Misc.



Figure 21: Misc.



Figure 22: Misc.

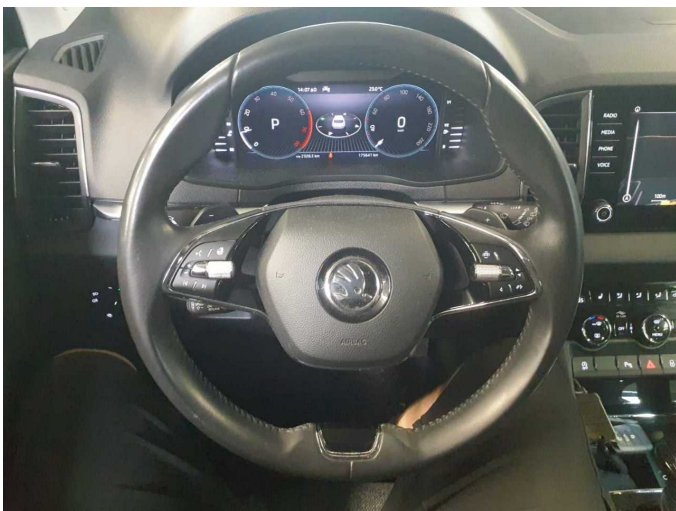


Figure 23: Misc.

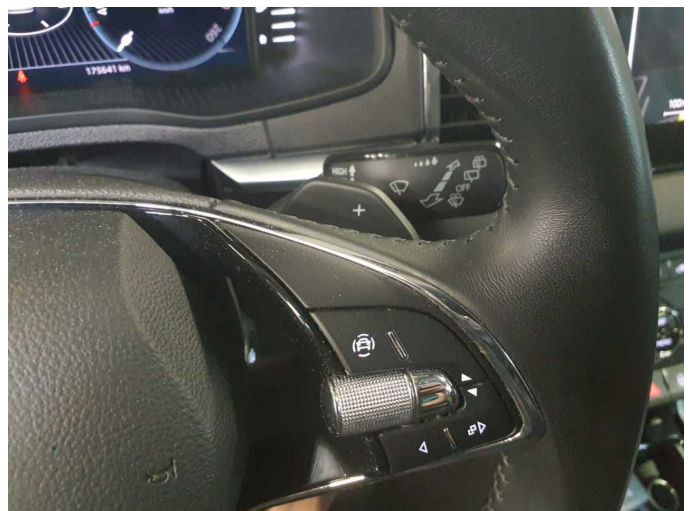


Figure 24: Misc.



Figure 25: Misc.



Figure 26: Misc.



Figure 27: Misc.



Figure 28: Misc.



Figure 29: Misc.



Figure 30: Misc.



**Damage 1:** Equipment: Tirefit filler - Expired - Replace



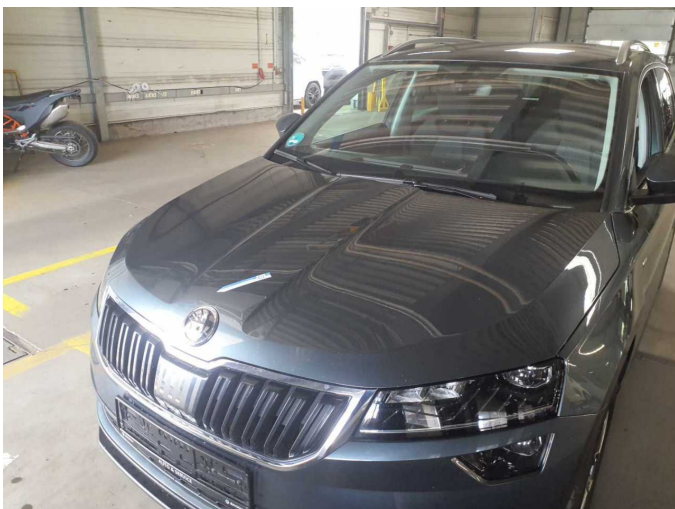
**Damage 2:** Door - front left side: Door edge - Scratch(es) - Smart repair



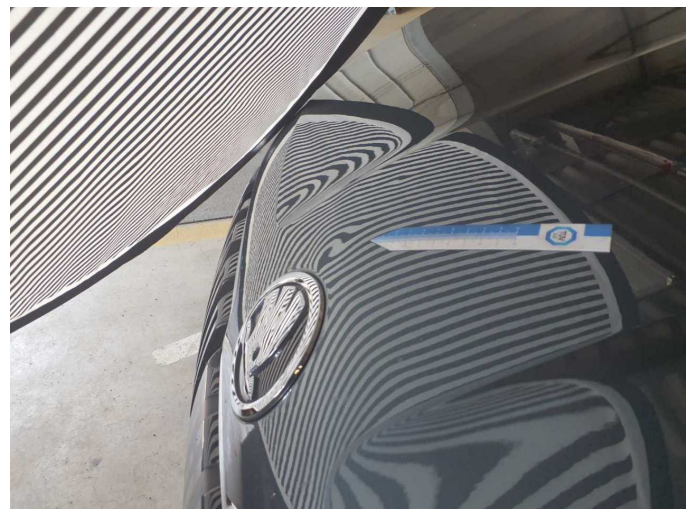
**Damage 2:** Door - front left side: Door edge - Scratch(es) - Smart repair



**Damage 2:** Door - front left side: Door edge - Scratch(es) - Smart repair



**Damage 3:** Bonnet: Bonnet - Damaged - Smooth repair work



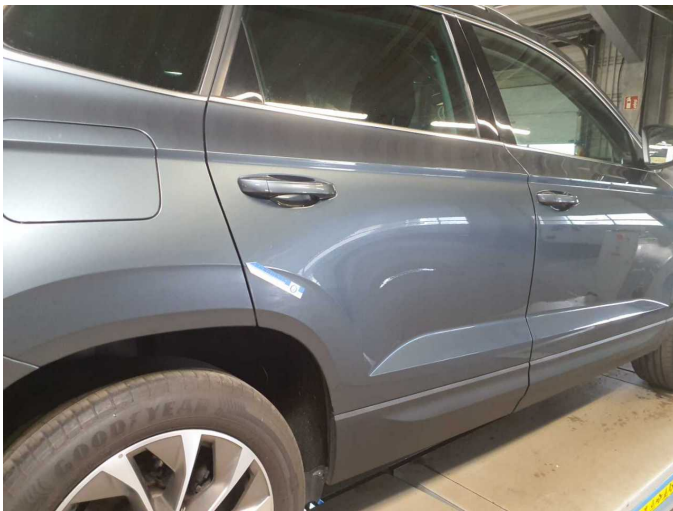
**Damage 3:** Bonnet: Bonnet - Damaged - Smooth repair work



**Damage 4:** Sill - right side: Sill - Scratch(es) - Smart repair



**Damage 4:** Sill - right side: Sill - Scratch(es) - Smart repair



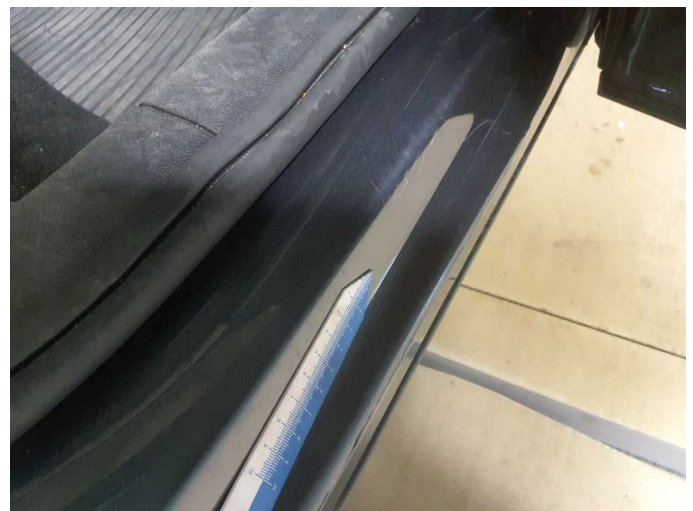
**Damage 5:** Door - rear right side: Door - Scratch(es) - Smart repair



**Damage 5:** Door - rear right side: Door - Scratch(es) - Smart repair



**Damage 6:** Side panel - rear right side: Sill - Scratch(es) - Smart repair



**Damage 6:** Side panel - rear right side: Sill - Scratch(es) - Smart repair



**Damage 6:** Side panel - rear right side: Sill - Scratch(es) - Smart repair



**Missing part 1:** Equipment: Umbrella - Missing - Replace