



CITROËN BERLINGO: FS-588-TE

Vinnumber:	VR7EFYHYCLN529685	Versionname:	CITROËN BERLINGO M 650kg BlueHDi 100 S&S BVM Driver VU [4P] bvm 5-100CH-5cv (fourgonnettesimple cabine)
First Registrationdate:	17/09/2020	Fiscalpower:	
Expertise Mileage:	62473	Power Kw:	75
Bodytype:	Transporter	Body colour:	White
Gearbox:	MAN 5 VIT	Paint type:	Opaque
Transmission:	Front	Interior colour:	Grey
Fueltype:	Diesel	Type of rims (mounted):	Steel
Engine functioning:	Yes	Dashboard color:	Black
Battery functioning:	Yes		
Vehicle running:	Yes		
Number of doors:	5		
Number of seats:	3		
Number head rests:	3		
Type of rims (mounted):	Steel		
Category:	Light Commercial Vehicle		

Options

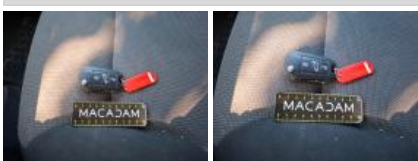
Number of keys total:	1	Radio:	
Number keys remote:	1	Front parking sensors:	
GPS big screen color:		Rear parking sensors:	
Windows electric F:		Sliding door right-side:	
Cruise Control:		Rear view camera:	
Steering wheel multifunctional:		Seat cover lining:	Lining Other
Type of climate control:	Manual climate control		

Tyres

195/65/15/95 H				
Summer tyres:	Fr.L.	Michelin: 45%	Fr.R.	Michelin: 50%
	Re.L.	Michelin: 70%	Re.R.	Michelin: 80%
Tyre profile depth FL:				5.1
Tyre profile depth FR:				4.9
Tyre profile depth RL:				3.7
Tyre profile depth RR:				3.0
Tyre size FL:				195/65 R 15 95 H
Tyre size FR:				195/65 R 15 95 H
Tyre size RL:				195/65 R 15 95 H
Tyre size RR:				195/65 R 15 95 H
Tyre type FL:				Summer
Tyre type FR:				Summer
Tyre type RL:				Summer
Tyre type RR:				Summer
Tyre make FL:				261
Tyre make FR:				261
Tyre make RL:				261
Tyre make RR:				261

Assistance equipment

Spare wheel:	Yes	Jack:	Yes
Remote ignition key, Missing, Repair/replace (lump sum)			



Interior, Dirty, Cleaning



Interior trim, Unclapsed, Dismount/Mount



Inner door sill FL, Scratch(es), Paint



Tyre RL, Out of tolerance, Replace



Tyre RR, Out of tolerance, Replace



Side wall RR, Dent(s) and scratch(es), Acceptable



Outer sill R, Dent(s) and scratch(es), Repair and paint (complete)



Door trim FR, Scratch(es), Replace



Door FR, Scratch(es), Paint



Sliding door R, Scratch(es), Paint



Boot door panel RL, Dent(s), Repair and paint (complete)



Bumper R, Deformed / Strained, Repair and paint (complete)



Rear light R, Scratch(es), Replace



Bodywork, Not original part, Sticker removal small



Historique Maintenance

Immatriculation: **FS-588-TE**

Date de 1ère immatriculation: **17/09/2020**

Modèle: **Citroen BERLINGO M 650kg BlueHDi 100 S&S BVM Driver VU [4P] bvm 5-100CH-5cv (fourgonnettesimple cabine)**

Date	Kilométrage	Fournisseur	Descriptif
30/07/2025	51.216	MONDIAL PARE-BRISE	TLG POUBELLE
	0		TLG POUBELLE
20/03/2025	48.117	STELLANTIS &YOU FRANCE SAS	FILTRE CLIM RPLT
	0		LIQUIDE DE FREIN
	0		FILTRE A AIR RPLT
	0		REVISION
	0		DIVERS CLIM
	0		BALAISSUIE GLACE AV
	0		PLAQUETTES AV RPLT
	0		REVISION
	0		RECYCLAGE
13/09/2024	45.735	AQUITAINE CONTROLE TECHNIQUE	CONTROLE TECHNIQUE
13/09/2024	45.231	STELLANTIS &YOU FRANCE SAS	LAMPE CODE AVD RPLT
12/05/2023	25.236	EUROMASTER FRANCE	REPLACEMENT PNEUS ETE
13/02/2023	23.108	STELLANTIS &YOU FRANCE SAS	FILTRE CLIM RPLT
	0		REVISION
	0		LIQUIDE DE FREIN
	0		BALAISSUIE GLACE AV
20/05/2022	14.745	EUROMASTER FRANCE	REPLACEMENT PNEUS ETE
08/12/2021	8.917	EUROMASTER FRANCE	REPARATION DE ROUE
	0		REPARATION DE ROUE