

Expertise

Protocol number: 45752288
Order No. / Reference: 26431457
Inspection date: 1 Jun 2026

Manufacturer: Skoda

Model: Kodiaq 2.0 TDI 4x4 DSG Sportline

VIN: TMBLN7NSXP8057979



Vehicle details

Manufacturer / Type / Model / Equipment

Skoda Kodiaq 2.0 TDI 4x4 DSG Sportline

Vehicle Identification number TMBLN7NSXP8057979

Mileage (Read) 80,874 km

First registration 22 Aug 2023

Number of holders 1

Next periodical technical inspection 08/2026
(Report not on hand)

Power / Engine displacement 147 kw / 1,968 ccm

Fuel type / Cylinder Diesel / 4

Gearbox / Number of gears Automatic / 7

Type of drive All-wheel drive

Type of vehicle SUV

Colour / colour code Black-Magic Perleffekt

Doors / Seats 5 / 5

Upholstery type Leather

Colour of upholstery Black



Vehicle details			
Maintenance booklet / proof	digital proof / complete	Next maintenance in	10,300 km
Last service on / at	08/2025 at 61,076 km		
Key is / should be	2 / 2	FZG documents	ZB#2 (B) was available (copy), ZB#1 (S) was not available.
		Letter No.	GT119690
Previous damage / Accident	Detectable	Repainting	None detectable
Inspection conditions	sufficient	Lifting equipment / pit	yes
Test drive	Not performed	Engine function test	Performed
Manufacturer key number/ type code number	8004 / AVW 00647		
Emission standard	EURO6;WLTP;AP;PI/CI; M, N1 I	fine dust sticker	
Permitted total weight	2,410 kg	Empty weight	

Tyres

Mounted tyres				
#	Tyre size	Type of tyre	Manufacturer	Tread depth
1)	215/65 R17 99V	Winter tyres on Light alloy	Goodyear	6mm / 6mm
2)	215/65 R17 99V	Winter tyres on Light alloy	Pirelli	6mm / 6mm
Additional tyres				
#	Tyre size	Type of tyre	Manufacturer	Tread depth
1)	235/50 R19 99V	Summer tyres on Light alloy	Hankook	5mm / 5mm
2)	235/50 R19 99V	Summer tyres on Light alloy	Hankook	5mm / 5mm
Replacement				
Typ	Tyre size	Type of tyre	Manufacturer	Tread depth
	Tirefit	Expiration date 04/2027		

Legend: Tread depth information for the left tire is listed first, for the right tire it is listed second on the axle in the direction of travel.



Equipment

Standard equipment

- 12V socket in the center console and in the trunk
- Storage compartments behind the wheel arches in the trunk
- Airbag, driver's knee airbag
- Airbag, front side airbags
- Permanent all-wheel drive
- Traction control (ASR)
- Electrically folding exterior mirrors including interior and driver's side mirrors with automatic dimming
- Hill start assist
- Hydraulic brake assist (HBA)
- Black headliner
- Dark Carbon decorative inlay
- Digital Cockpit (8")
- Third brake light
- eCall
- Electronic transverse differential lock (XDS+)
- Driving light assistant and rain sensor
- Chassis: Adaptive chassis DCC including driving profile selection
- Front radar assistant including city emergency braking function with pedestrian detection
- Closed storage compartment on the driver's side
- Transmission: 7-speed dual-clutch transmission (DSG)
- Illuminated glove compartment
- Climatronic air conditioning (2-zone)
- Boot cover, roll-up and removable
- LED ambient lighting
- LED matrix headlights and dynamic high beam assist (Light Assist)
- Steering wheel: Sport leather steering wheel with multifunction buttons including paddle shifters.
- Front center armrest, including storage compartment
- Multi-collision brake
- Rear parking sensors
- Upholstery: Microfiber Sport-Black
- Radio: Bolero infotainment system
- Radio accessories: Digital radio reception DAB+
- Tire pressure monitoring
- Rear seat backrest split 60:40, foldable, longitudinally adjustable, backrest angle adjustable
- Electromechanical power steering
- Seats: Heated front and outer rear seats
- Seats: Electrically adjustable front seats with memory function
- Skoda Care Connect
- Sun visor on driver and passenger side with illuminated vanity mirror
- Sunset
- Front door sill trims
- Variable fastening concept in the trunk
- Immobiliser
- Storage compartment on the left wheel arch
- front aero windshield wipers
- Airbag, driver and passenger
- Airbag, head airbags
- Allergen filter
- Anti-lock braking system (ABS)
- Dashboard in black / black, door trim in black with microfiber inlay
- Electrically adjustable and heated exterior mirrors with integrated side indicators
- Care Connect: Proactive services (10-year term)
- Roof rails, black
- Diesel particulate filter
- Tachometer
- Easy Start (start-stop button)
- Electronic parking brake including auto-hold function
- ESC Electronic Stability Control
- Driving profile selection
- Electric windows front and rear
- High Beam Assist (Light Assist)
- front and rear floor mats
- Front and rear footwell lighting
- Cruise control
- Tinted windows
- Isofix anchorage on the outer rear seats including top tether
- Front headrests are fixed, rear headrests are height-adjustable.
- LED taillights in crystal glass look with animated turn signals
- Reading lights at the front of the headliner
- Rear center armrest with cup holders
- Engine drag torque control (MSR)
- Fog lights with integrated LED daytime running lights
- Stainless steel pedal design
- Progressive steering
- Radio accessories: 8 speakers
- Radio accessories: Wireless SmartLink
- Wheels: 19" alloy wheels Triglav anthracite polished
- Heated windshield washer nozzles, front
- Headlights washer / wiper system
- Kodiaq seat belts
- Seats: Adjustable lumbar support in the front seats
- Seats: Height-adjustable front seats
- Seats: Remote release of the rear seat backrests (2nd row) in the boot
- Speed limiter
- Bumpers painted in body color
- Telephone: Convenient hands-free telephone system including phone box
- Lashing eyes in the trunk
- Central locking with remote control



Extra equipment

- Swiveling trailer hitch (with electric release, including trailer stabilization)
- Paint finish: Metallic / Pearl effect
- Steering wheel: Heated sports steering wheel including paddle shifters (height and reach adjustable leather steering wheel with multifunction buttons)
- Upholstery: Leather interior with ventilated front seats (including manual seat extension - seat surfaces made of fine nappa leather, combined with high-quality materials)
- Rear view camera
- Windscreen, wirelessly heated
- Traveller Plus (DSG) assistance system (Predictive Adaptive Cruise Control pACC (control range up to 210 km/h) - Lane Assist - Adaptive Lane Guidance - Park Assist - Traffic Jam and Emergency Assist - Traffic Sign Recognition)
- Package: Business Columbus (Sportline) (Dynamic radio navigation system Columbus - 9.2" capacitive color display - Digital Cockpit Plus (10") - Driver fatigue detection - 230V socket and a USB charging port (Type-C) on the back of the front center armrest - KESSY keyless entry - Electric tailgate operation including comfort opening - Luggage net partition - Infotainment Online (3-year subscription))

Brief expert findings

Documents submitted	At the time of the inspection, the vehicle registration certificate Part 2 (title) was available, but the vehicle registration certificate Part 1 (document) was not. (Copy)
VIN comparison	The vehicle identification number (VIN) was read from the vehicle and its conformity with the submitted documents was confirmed by the undersigned during the inspection.
Inspection	The inspection conditions were sufficient for the assessment of the vehicle. Lifting equipment and/or a pit were available for examining the vehicle.
Test drive	No test drive/shunting maneuver was carried out during the inspection of the vehicle.
Engine function test	An engine test run was performed.

Value reducing factors

No.	Component group	Description
1	Door - rear right side	Door - dent(s) - Smooth repair work
2	Door - front right side	Door - Dent / paintcoat damage - Smart repair
3	Front bumper	Spoiler - Paint defect - Paint

Wear and tear

No.	Component group	Description
1	Misc.	Main inspection - No evidence - No deduction
2	Rear bumper	Rear bumper - Scratch(es) - No deduction
3	Vehicle glazing	Windscreen - Stone chips - No deduction

The vehicle shows signs of wear and tear commensurate with its age and use.

Previous damages

No.	Previous damage	Extent of damage (Net)
1	Front, Side right, Provided by user / customer, from 30 Dec 2024	8.097,85 €



Order/Scope of Order

An order was placed to prepare a sales report for the described vehicle. This report includes the following:

- Description of key vehicle information
- Documentation of equipment features
(Delivery by third-party service providers)
- Documentation of damage, defects, missing parts
- Documentation of prior damage, unrepaired prior damage, repainting
- A brief visual or functional inspection of the equipment details, if possible.
(Functional testing of driver assistance systems is not included in the scope of services!)
- a photographic documentation of the vehicle

Basis for the order

This product is based on the guidelines for vehicle returns and valuations published by Alphabet Fleet GmbH. The expert makes the specific findings in each individual case objectively, within the framework of the prescribed standards, based on their own expertise.

The vehicle inspection takes place in a fully assembled, unassembled state.

Damage or defects that can only be detected during disassembly/diagnostic work or through further investigation remain within the realm of prognostic risk. An increased risk exists due to concealed defects caused by fraudulent misrepresentation and which were not identifiable by the expert.

Damage or defects resulting from normal use or wear and tear of the vehicle will be accepted in accordance with the applicable standard.

There was no explicit identification or monetary consideration of the expected features within the product.

Features which, in their nature and extent, slightly exceed normal use but do not constitute unacceptable damage, will be documented and indicated as signs of wear, if applicable.

Damage or defects that, according to the applicable standard, can no longer be attributed to normal use or wear and tear are listed under "Value Reducing Factors" in the product description.

Depending on the product specification, a monetary ID can be provided. If this takes place, the costs can be 100% d or pro rata depending on the vehicle's age and mileage.

Previous damages

According to available information previous damages were repaired at the vehicle. Traces of repairs, which allow conclusions about the area of repair, were not recognizable during the inspection.

Comments

- Winterradsatz ist kein Bestandteil des Auslieferungsumfangs.



Figure 1: Diagonal front (left)



Figure 2: Diagonal front (right)



Figure 3: Diagonal rear (left)



Figure 4: Diagonal rear (right)



Figure 5: Interior - front



Figure 6: Interior - rear



Figure 7: Instrument cluster



Figure 8: Instrument panel



Figure 9: Interior 360° view



Figure 10: Cargo area

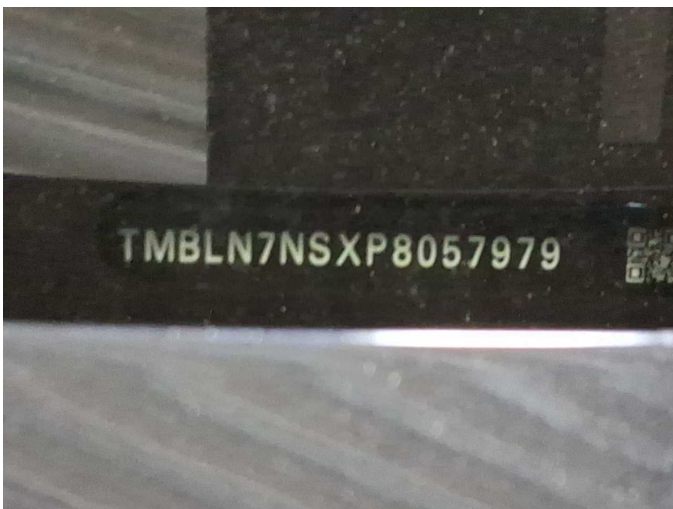


Figure 11: VIN



Figure 12: Mounted tyres



Figure 13: Documents



Figure 14: Additional tyres

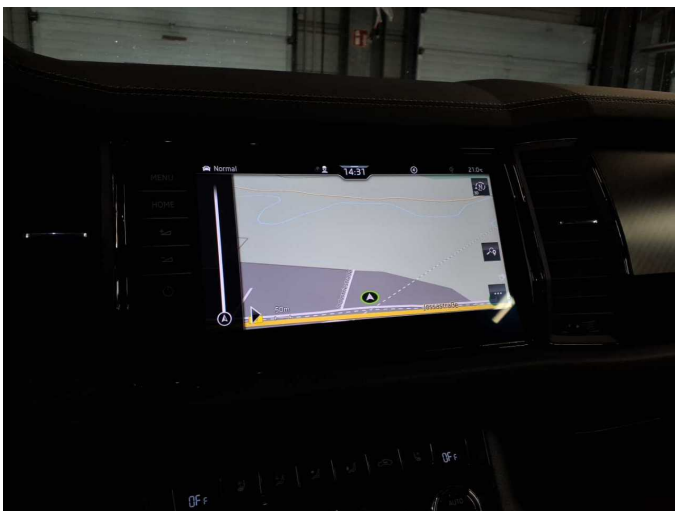


Figure 15: Navigation



Figure 16: Misc.

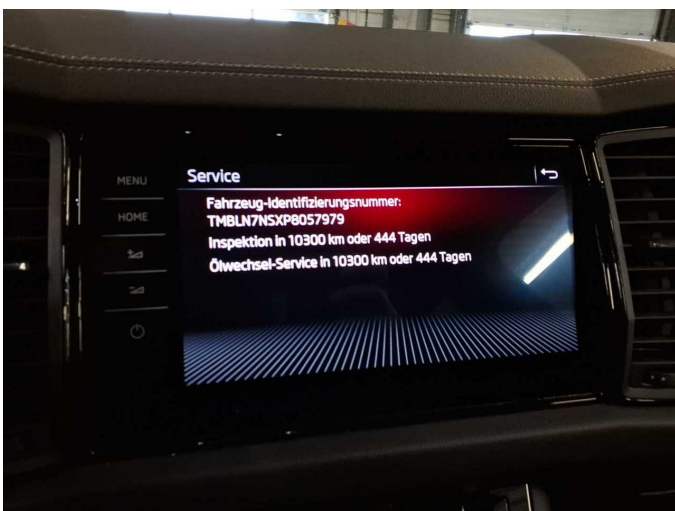


Figure 17: Misc.



Figure 18: Misc.



Figure 19: Misc.



Figure 20: Misc.

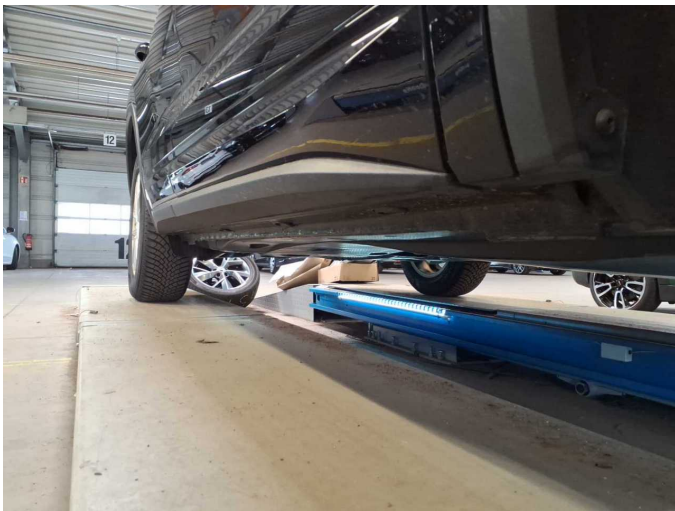


Figure 21: Misc.



Figure 22: Misc.

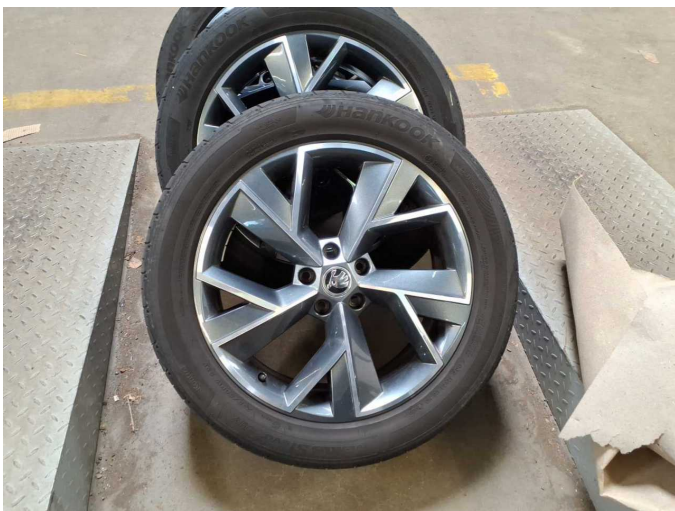


Figure 23: Misc.

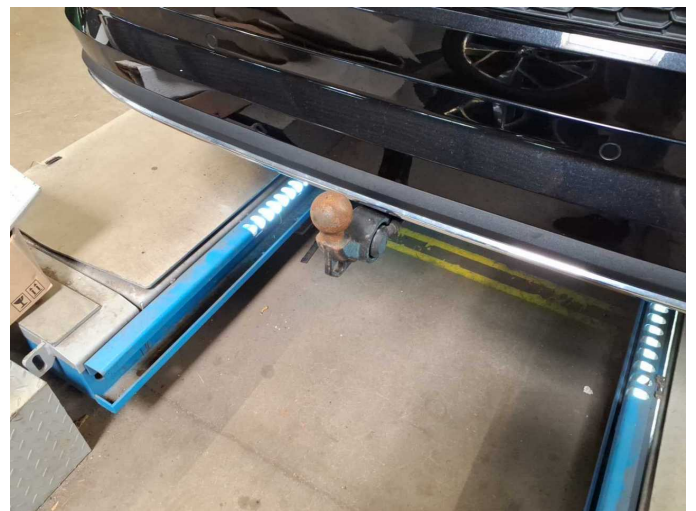


Figure 24: Misc.



Figure 25: Misc.



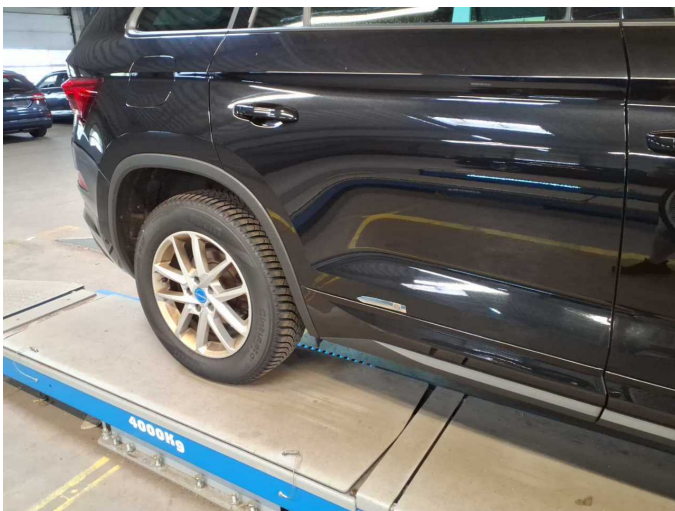
Figure 26: Misc.



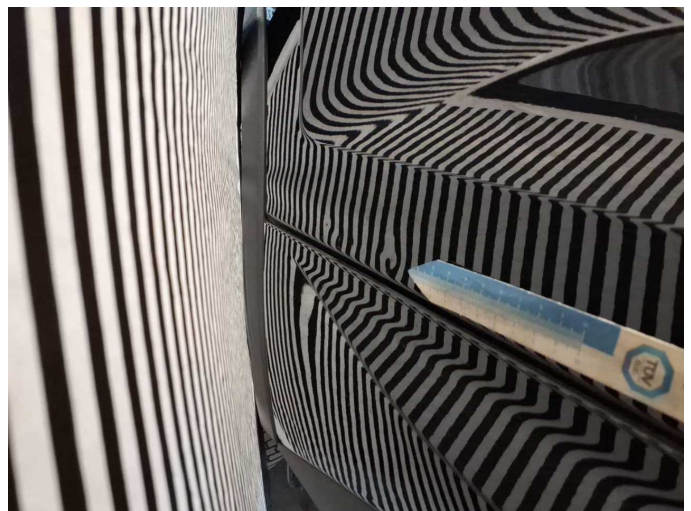
Figure 27: Misc.



Figure 28: Misc.



Damage 1: Door - rear right side: Door - dent(s) - Smooth repair work



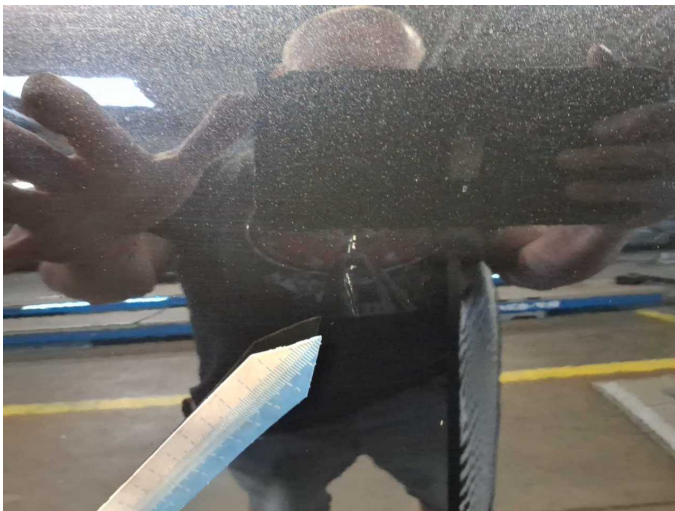
Damage 1: Door - rear right side: Door - dent(s) - Smooth repair work



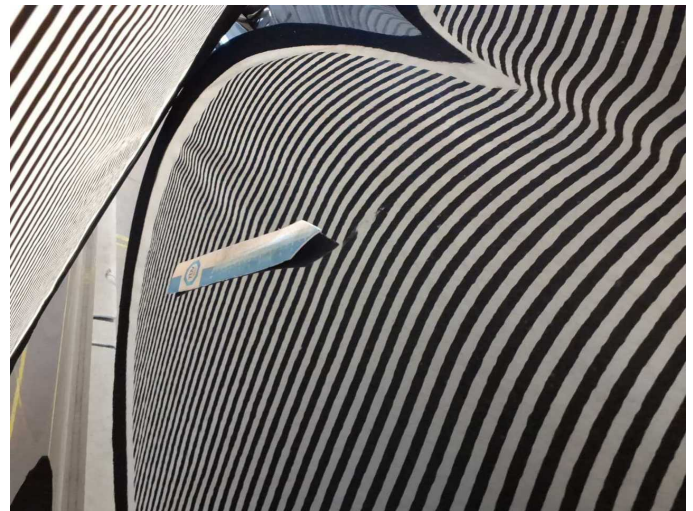
Damage 1: Door - rear right side: Door - dent(s) - Smooth repair work



Damage 2: Door - front right side: Door - Dent / paintcoat damage - Smart repair



Damage 2: Door - front right side: Door - Dent / paintcoat damage - Smart repair



Damage 2: Door - front right side: Door - Dent / paintcoat damage - Smart repair



Damage 3: Front bumper: Spoiler - Paint defect - Paint



Damage 3: Front bumper: Spoiler - Paint defect - Paint



Damage 3: Front bumper: Spoiler - Paint defect - Paint



Wartungshistorie

(gemäß Auftraggeber Informationen)

Fahrgestellnummer: TMBLN7NSXP8057979
Hersteller / Modell: SKODA SKODA Kodiaq 2.0 TDI 4x4 DSG Sportline

Datum	KM-Stand	Beschreibung
28.08.2025	61.835	Bremse Sonstiges; Bremsklötze vorne; Bremsscheiben vorne
19.08.2025	61.076	Bremse Sonstiges; Bremsflüssigkeit ern; Bremsklötze hinten; Getriebeöl ern/prüfen; Motoröl b. Wartung; Ölfilter ern; Ölwechsel - Hinterachse; Regelwartungsdienst; Reparatur Sonstiges; Wartung Sonstiges
24.10.2024	31.592	Motoröl b. Wartung; Ölfilter ern; Regelwartungsdienst; Wartung Sonstiges