

Expertise

Protocol number: 46279999
Order No. / Reference: 26536692
Inspection date: 29 Jun 2026

Manufacturer: Peugeot

Model: 308 SW BlueHDi 130 EAT8 Allure Pack

VIN: VR3FCYHZTPY503901



Vehicle details

Manufacturer / Type / Model / Equipment

Peugeot 308 SW BlueHDi 130 EAT8 Allure Pack

Vehicle Identification number VR3FCYHZTPY503901

Mileage (Read) 148,977 km

First registration 21 Apr 2023

Number of holders 1

Power / Engine displacement 96 kw / 1,499 ccm

Fuel type / Cylinder Diesel / 4

Gearbox / Number of gears Automatic / 8

Type of drive Front drive

Type of vehicle Station wagon

Colour / colour code Schneeweiß

Doors / Seats 5 / 5

Upholstery type Cloth / leather combination

Colour of upholstery Black-Grey



Vehicle details

Maintenance booklet / proof	digital proof / complete	Next maintenance in	18,800 km
Last service on / at	02/2026 at 137,874 km		
Key is / should be	2 / 2	FZG documents	ZB#2 (B) was available (copy), ZB#1 (S) was not available.
		Letter No.	GG050151
Previous damage / Accident	None detectable	Repainting	None detectable
Inspection conditions	sufficient	Lifting equipment / pit	yes
Test drive	Not performed	Engine function test	Performed
Manufacturer key number/ type code number	1889 / AEI 00038		
Emission standard	EURO6;WLTP;AP;PI/CI; M, N1 I	fine dust sticker	
Permitted total weight	1,950 kg	Empty weight	

Tyres

Mounted tyres

#	Tyre size	Type of tyre	Manufacturer	Tread depth
1)	225/45 R17 94W	Summer tyres on Light alloy	Goodyear	6mm / 6mm
2)	225/45 R17 94W	Summer tyres on Light alloy	Goodyear	6mm / 6mm

Additional tyres

#	Tyre size	Type of tyre	Manufacturer	Tread depth
1)	205/55 R16 91H	Winter tyres on Light alloy	Goodyear	5mm / 5mm
2)	205/55 R16 91H	Winter tyres on Light alloy	Goodyear	5mm / 5mm

Replacement

Typ	Tyre size	Type of tyre	Manufacturer	Tread depth
	Tirefit	Expiration date 05/2028		

Legend: Tread depth information for the left tire is listed first, for the right tire it is listed second on the axle in the direction of travel.

TÜV SÜD Auto Partner GmbH
Gutenbergstraße 13
70771 Leinfelden-Echterdingen

Inspection location
Hartmann Fleet Professionals GmbH
Industriestraße 11
36272 Niederaula



Equipment



Standard equipment

- Storage compartment: Illuminated glove compartment
- Active Safety Brake Plus (Active day and night between 5 and 140 km/h, depending on the detected obstacle (moving obstacle: 5-140 km/h; stationary obstacle/cyclist: 5-80 km/h; pedestrian: 5-60 km/h). At speeds below 30 km/h, the vehicle is braked to a complete stop; between 30 and 140 km/h, the system reduces the impact speed by a maximum of 50 km/h. Above this threshold, the driver must brake manually.)
- Electrically adjustable, heated and folding exterior mirrors (with LED approach lighting - integrated LED turn signals)
- Turn signals with lane change indicator function
- third brake light
- Digital instrument cluster with high-resolution 10" screen, adjustable and customizable
- Eco-LED headlights
- Front parking aid, acoustic and visual
- Driving mode selector (Sport - Normal - Eco)
- Electric windows, front and rear (with comfort operation and anti-pinch protection)
- Follow-me-home function (automatic)
- Laminated glass windshield, noise-reducing
- Transmission: 8-speed automatic transmission EAT8
- Heated rear window
- Rear apron in black
- Map pockets on the front seatbacks
- Child safety lock at the rear
- LED lighting in the front footwell
- LED ceiling lighting at the front (2 reading lights at the front and rear)
- Steering wheel: Small multifunction leather steering wheel, flattened at the top and bottom.
- light sensor
- Rear center armrest (with pass-through flap)
- front center armrest
- Multifunctional touchscreen with 10" HD color display (capacitive screen - multi-window capable with widgets or shortcuts)
- Multi-collision brake
- Navigation system: PEUGEOT i-Connect Advanced (up to 8 profiles and 2 smartphones simultaneously via Bluetooth - Bi-tuner - 6 speakers - DAB+ - MP3-compatible - Bluetooth hands-free calling with audio streaming via Bluetooth - 2 front USB ports (Type C) - Steering wheel and touchscreen controls. Navigation: - Real-time navigation by TomTom Services - Over-the-air map updates - Map display on the digital instrument cluster - OK PEUGEOT voice control for navigation, telephone, climate control and media - 2 rear USB-C ports)
- Tire pressure monitoring system
- Wheels: Tire repair kit (compressor + tire sealant spray)
- Reversing camera with 180° surround view
- Electric power steering
- Seats: Passenger seat height adjustable
- ABS (Anti-lock Braking System) with electronic brake force distribution
- Airbags (6) (Driver and front passenger airbag - front passenger airbag deactivatable - front side airbags - front and rear curtain airbags)
- Rear Cross Traffic Alert (Rear Cross Traffic Alert)
- Adaptive Cruise Control (ACC) with Stop & Go function (EAT8) (detection of stop signs, one-way street signs and start/end of no-overtaking zones)
- Exterior mirror caps in Perla Nera Black
- Hill start assist
- On-board computer
- Decorative fabric inserts "Texa" for door panels and dashboard
- Tachometer
- Rear parking aid, acoustic and visual
- Electronic Stability Program (ESP) (with ASR (traction control))
- High beam assist
- electric parking brake
- Front collision warning
- luggage compartment roller blind
- Cup holder in the center console
- rear window wiper
- Interior mirror automatically dimming
- Keyless System Plus (keyless access and start system)
- Automatic climate control (2-zone), with activated carbon filter (separately adjustable for driver and front passenger)
- LED taillights
- LED daytime running lights
- Steering wheel: Leather steering wheel with paddle shifters
- Mirror Screen (Wireless transmission of multimedia content and apps from a compatible smartphone to the vehicle's touchscreen, allowing direct control of compatible functions and apps - CarPlay (for compatible Apple iPhone models) - Android Auto (for compatible smartphone models with Android operating system))
- Fatigue warning system with fatigue detection
- Emergency brake assist with automatic activation of the hazard warning lights
- Particulate filter: FAP diesel particulate filter
- Break warning
- Peugeot i-Toggles (screen with configurable virtual buttons for the most important functions such as radio, air conditioning, navigation system, vehicle settings, telephone and connectivity)
- Upholstery: Fabric/faux leather
- Rain sensor
- Wheels: Halong 17" alloy wheels, two-tone (tires 225/45 R17 94V)
- Side windows in the second row and rear window are more heavily tinted.
- Seats: Driver's seat height adjustable
- Seats: Rear bench seat and backrest split 40/20/40, foldable (Magic Flat system with control element in the boot)



- Seats: Manual lumbar support for driver
- Seats: Rear seats (3 three-point safety belts - belt force limiters on the side seats - warning light and warning signal when the safety belt is released - Isofix child seat anchors on the outer seats)
- Lane keeping assist with steering intervention
- 12-volt socket
- Stop&Start automatic
- Blind spot assist
- Chrome-plated decorative exhaust tailpipes
- Immobiliser
- Central locking system, activatable from inside via remote control

- Seats: Front seats (three-point seat belts with belt locking devices - pyrotechnic belt tensioners and electronically controlled belt force limiters - warning light and warning signal when the seat belt is not fastened or is released for driver and front passenger - safety-optimized headrests)
- Doors lock automatically when driving off
- Traffic sign recognition (with display of the speed recommendation in the instrument cluster)
- Decorative trim in high-gloss black on the side windows
- Adjustable intermediate loading shelf

Extra equipment

- Detachable towbar (with removable ball head without tools)
- Seats: Heated front seats
- Luggage compartment partition net
- Paint finish: Solid

Brief expert findings

Documents submitted	At the time of the inspection, the vehicle registration certificate Part 2 (title) was available, but the vehicle registration certificate Part 1 (document) was not. (Copy)
VIN comparison	The vehicle identification number (VIN) was read from the vehicle and its conformity with the submitted documents was confirmed by the undersigned during the inspection.
Inspection	The inspection conditions were sufficient for the assessment of the vehicle. Lifting equipment and/or a pit were available for examining the vehicle.
Test drive	No test drive/shunting maneuver was carried out during the inspection of the vehicle.
Engine function test	An engine test run was performed.

Value reducing factors

No.	Component group	Description
1	Misc.	Main inspection - No evidence - No deduction
2	2nd wheel set	1 tyre (kein Bestandteil der Ausstattung) - Damaged - No deduction
3	Roof	Roof rail - right side - dent(s) - Smooth repair work
4	Bonnet	Bonnet - dent(s) - Smooth repair work
5	Door - rear left side	Door - dent(s) - Smooth repair work
6	Door - front left side	Door handle - inside - Scratched - Replace
7	Door - front left side	Door - dent(s) - Smooth repair work
8	Wheel / tyres	Tyre - front left side - Broken / torn - Replace
9	Roof	Roof - dent(s) - Smooth repair work
10	Wheel / tyres	Alloy rim - rear left side (Materialabtrag) - Scratched - Replace
11	Wheel / tyres	Alloy rim - rear right side - Scratched - Replace
12	Wheel / tyres	Alloy rim - front right side (Materialabtrag) - Scratched - Replace
13	Wheel / tyres	Alloy rim - front left side (Materialabtrag) - Scratched - Replace
14	Rear bumper	Spoiler - Scratched - Replace
15	Interior	Boot cover / roller cover - Deformed - Replace
16	Rear bumper	Rear bumper - Deformed - Replace
17	Front bumper	Front bumper - Scratched - Repair and paint



Wear and tear

No.	Component group	Description
1	Equipment	Vehicle key with remote control - Scratch(es) - No deduction

The vehicle shows signs of wear and tear commensurate with its age and use.

Order/Scope of Order

An order was placed to prepare a sales report for the described vehicle. This report includes the following:

- Description of key vehicle information
- Documentation of equipment features
(*Delivery by third-party service providers*)
- Documentation of damage, defects, missing parts
- Documentation of prior damage, unrepaired prior damage, repainting
- A brief visual or functional inspection of the equipment details, if possible.
(*Functional testing of driver assistance systems is not included in the scope of services!*)
- a photographic documentation of the vehicle

Basis for the order

This product is based on the guidelines for vehicle returns and valuations published by Alphabet Fleet GmbH. The expert makes the specific findings in each individual case objectively, within the framework of the prescribed standards, based on their own expertise.

The vehicle inspection takes place in a fully assembled, unassembled state.

Damage or defects that can only be detected during disassembly/diagnostic work or through further investigation remain within the realm of prognostic risk. An increased risk exists due to concealed defects caused by fraudulent misrepresentation and which were not identifiable by the expert.

Damage or defects resulting from normal use or wear and tear of the vehicle will be accepted in accordance with the applicable standard.

There was no explicit identification or monetary consideration of the expected features within the product.

Features which, in their nature and extent, slightly exceed normal use but do not constitute unacceptable damage, will be documented and indicated as signs of wear, if applicable.

Damage or defects that, according to the applicable standard, can no longer be attributed to normal use or wear and tear are listed under "Value Reducing Factors" in the product description.

Depending on the product specification, a monetary ID can be provided. If this takes place, the costs can be 100% d or pro rata depending on the vehicle's age and mileage.

Previous damages

No apparent prior damage that had been repaired could be found on the vehicle.

Comments

- Der Winterradsatz ist kein Bestandteil der Ausstattungsliste.



Figure 1: Diagonal front (left)



Figure 2: Diagonal front (right)



Figure 3: Diagonal rear (left)



Figure 4: Diagonal rear (right)



Figure 5: Interior - front



Figure 6: Interior - rear



Figure 7: Instrument cluster



Figure 8: Instrument panel



Figure 9: Interior 360° view



Figure 10: Cargo area

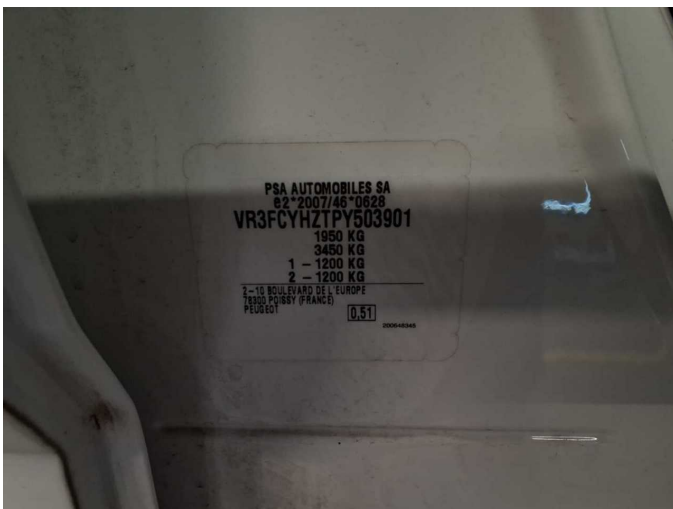


Figure 11: VIN



Figure 12: Mounted tyres



Figure 13: Documents



Figure 14: Additional tyres



Figure 15: Additional tyres



Figure 16: Navigation

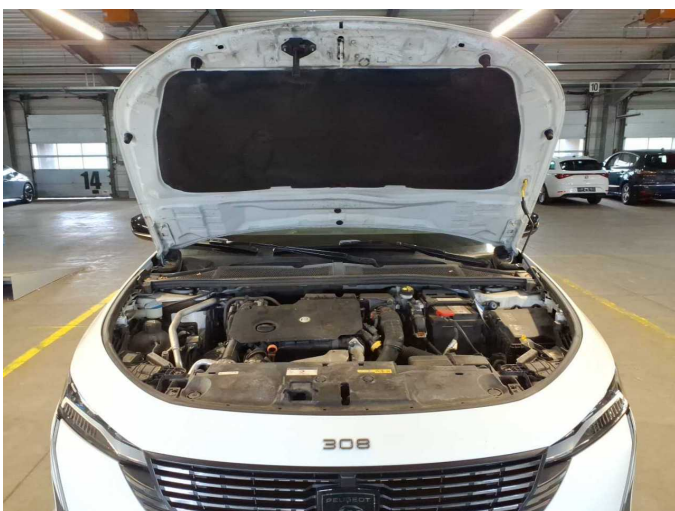


Figure 17: Misc.



Figure 18: Misc.



Figure 19: Misc.



Figure 20: Misc.



Figure 21: Misc.



Figure 22: Misc.

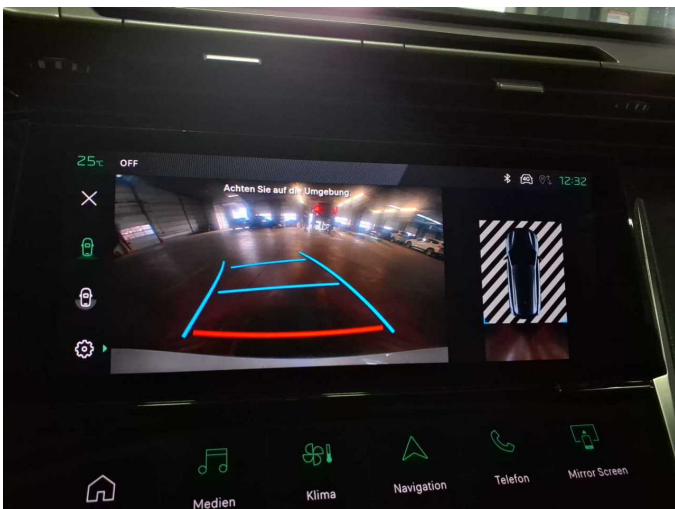


Figure 23: Misc.



Figure 24: Misc.



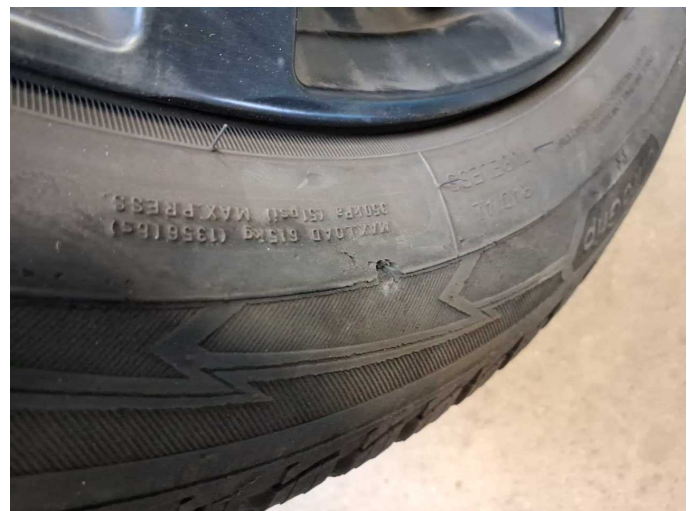
Figure 25: Misc.



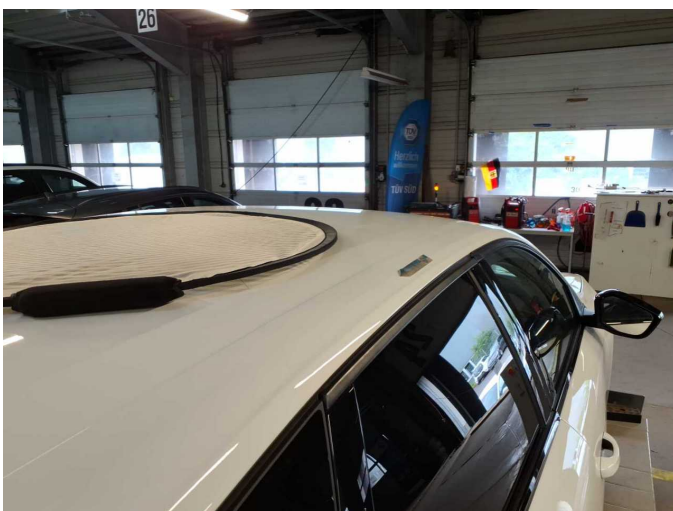
Figure 26: Misc.



Damage 2: 2nd wheel set: 1 tyre (kein Bestandteil der Ausstattung) - Damaged - No deduction



Damage 2: 2nd wheel set: 1 tyre (kein Bestandteil der Ausstattung) - Damaged - No deduction



Damage 3: Roof: Roof rail - right side - dent(s) - Smooth repair work



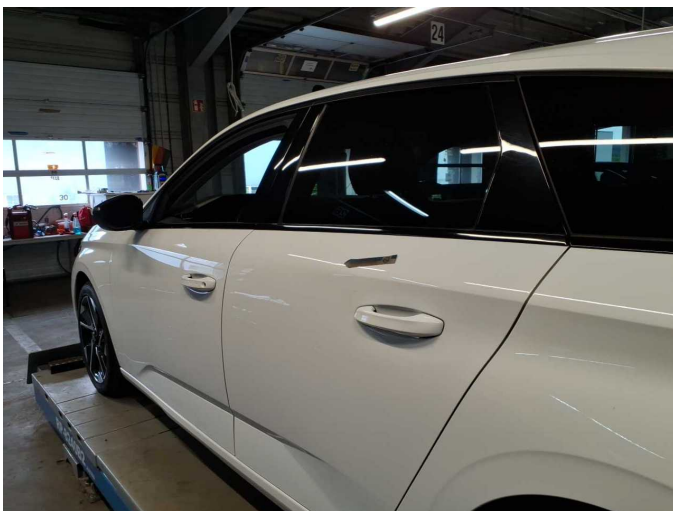
Damage 3: Roof: Roof rail - right side - dent(s) - Smooth repair work



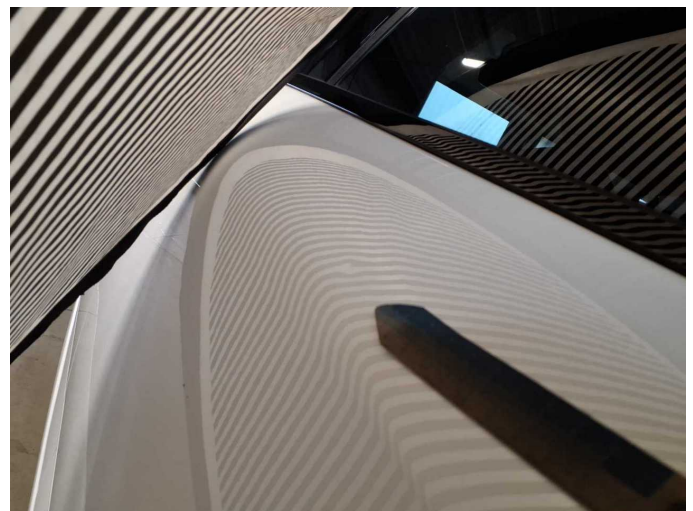
Damage 4: Bonnet: Bonnet - dent(s) - Smooth repair work



Damage 4: Bonnet: Bonnet - dent(s) - Smooth repair work



Damage 5: Door - rear left side: Door - dent(s) - Smooth repair work



Damage 5: Door - rear left side: Door - dent(s) - Smooth repair work



Damage 6: Door - front left side: Door handle - inside - Scratched - Replace



Damage 6: Door - front left side: Door handle - inside - Scratched - Replace



Damage 7: Door - front left side: Door - dent(s) - Smooth repair work



Damage 7: Door - front left side: Door - dent(s) - Smooth repair work



Damage 8: Wheel / tyres: Tyre - front left side - Broken / torn - Replace



Damage 8: Wheel / tyres: Tyre - front left side - Broken / torn - Replace



Damage 9: Roof: Roof - dent(s) - Smooth repair work



Damage 9: Roof: Roof - dent(s) - Smooth repair work



Damage 9: Roof: Roof - dent(s) - Smooth repair work



Damage 9: Roof: Roof - dent(s) - Smooth repair work



Damage 10: Wheel / tyres: Alloy rim - rear left side (Materialabtrag) - Scratched - Replace



Damage 10: Wheel / tyres: Alloy rim - rear left side (Materialabtrag) - Scratched - Replace



Damage 10: Wheel / tyres: Alloy rim - rear left side (Materialabtrag) - Scratched - Replace



Damage 11: Wheel / tyres: Alloy rim - rear right side - Scratched - Replace



Damage 11: Wheel / tyres: Alloy rim - rear right side - Scratched - Replace



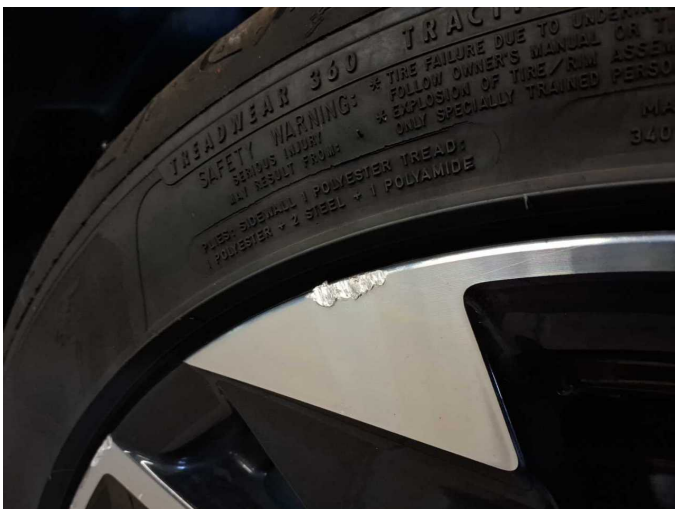
Damage 11: Wheel / tyres: Alloy rim - rear right side - Scratched - Replace



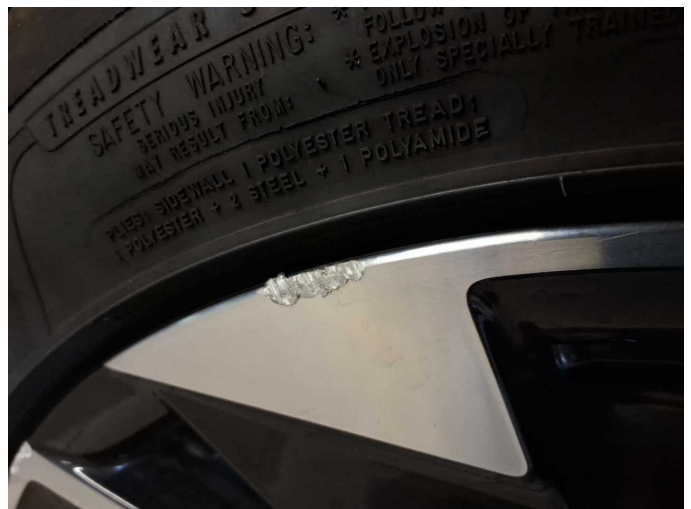
Damage 11: Wheel / tyres: Alloy rim - rear right side - Scratched - Replace



Damage 12: Wheel / tyres: Alloy rim - front right side (Materialabtrag) - Scratched - Replace



Damage 12: Wheel / tyres: Alloy rim - front right side (Materialabtrag) - Scratched - Replace



Damage 12: Wheel / tyres: Alloy rim - front right side (Materialabtrag) - Scratched - Replace



Damage 13: Wheel / tyres: Alloy rim - front left side (Materialabtrag) - Scratched - Replace



Damage 13: Wheel / tyres: Alloy rim - front left side (Materialabtrag) - Scratched - Replace



Damage 13: Wheel / tyres: Alloy rim - front left side (Materialabtrag) - Scratched - Replace



Damage 13: Wheel / tyres: Alloy rim - front left side (Materialabtrag) - Scratched - Replace



Damage 14: Rear bumper: Spoiler - Scratched - Replace



Damage 14: Rear bumper: Spoiler - Scratched - Replace



Damage 15: Interior: Boot cover / roller cover - Deformed - Replace



Damage 15: Interior: Boot cover / roller cover - Deformed - Replace



Damage 16: Rear bumper: Rear bumper - Deformed - Replace



Damage 16: Rear bumper: Rear bumper - Deformed - Replace



Damage 16: Rear bumper: Rear bumper - Deformed - Replace



Damage 16: Rear bumper: Rear bumper - Deformed - Replace



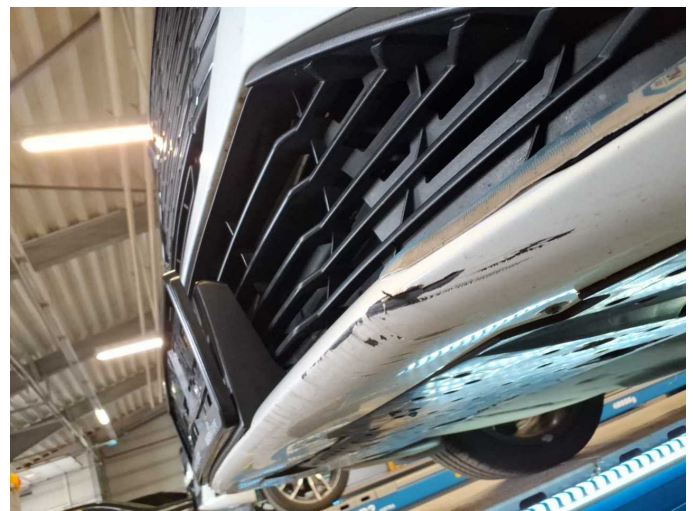
Damage 16: Rear bumper: Rear bumper - Deformed - Replace



Damage 17: Front bumper: Front bumper - Scratched - Repair and paint



Damage 17: Front bumper: Front bumper - Scratched - Repair and paint



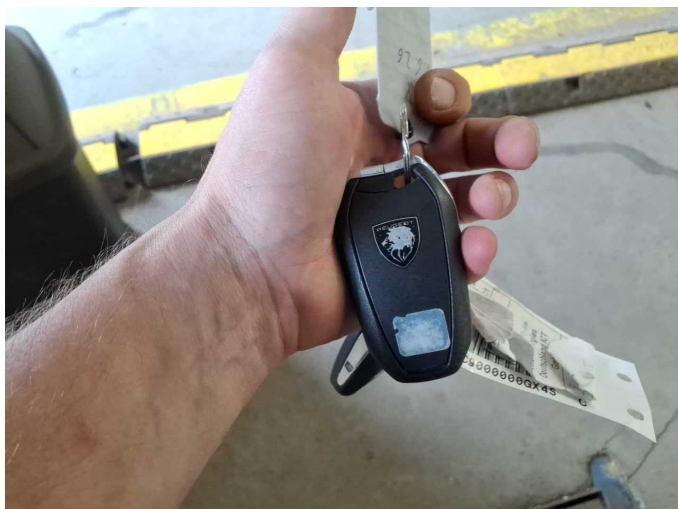
Damage 17: Front bumper: Front bumper - Scratched - Repair and paint



Damage 17: Front bumper: Front bumper - Scratched - Repair and paint



Damage 17: Front bumper: Front bumper - Scratched - Repair and paint



Wear and tear 1: Equipment: Vehicle key with remote control -
Scratch(es) - No deduction



Wartungshistorie

(gemäß Auftraggeber Informationen)

Fahrgestellnummer: VR3FCYHZTPY503901

Hersteller / Modell: PEUGEOT PEUGEOT 308 SW BlueHDi 130 EAT8 Allure Pack

Datum	KM-Stand	Beschreibung
12.02.2026	137.874	Motoröl b. Wartung; Ölfilter ern; Regelwartungsdienst; Wartung Sonstiges
10.10.2025	119.465	Bremsklötze vorne; Keilrippenriemen; Motoröl b. Wartung; Ölfilter ern; Regelwartungsdienst; Wartung Sonstiges
11.07.2025	105.647	Motoröl b. Wartung; Ölfilter ern; Regelwartungsdienst; Wartung Sonstiges
17.03.2025	85.553	Bremsflüssigkeit ern; Motoröl b. Wartung; Regelwartungsdienst
09.01.2025	58.135	Kraftstofffilter ern; Luftfiltereinsatz ern; Motoröl b. Wartung; Ölfilter ern; Regelwartungsdienst; Wartung Sonstiges
19.06.2024	26.374	Motoröl b. Wartung; Ölfilter ern; Regelwartungsdienst; Wartung Sonstiges