

Expertise

Protocol number: 45970074
Order No. / Reference: 26520688
Inspection date: 10 Jun 2026

Manufacturer: Skoda

Model: Octavia Combi 2.0 TDI DSG Sportline

VIN: TMBJJ0NX7RY100151



Vehicle details

Manufacturer / Type / Model / Equipment

Skoda Octavia Combi 2.0 TDI DSG Sportline

Vehicle Identification number	TMBJJ0NX7RY100151
Mileage (Read)	24,309 km
First registration	22 Feb 2024
Number of holders	2
Next periodical technical inspection	02/2027 (Report not on hand)

Power / Engine displacement	110 kw / 1,968 ccm
------------------------------------	--------------------

Fuel type / Cylinder	Diesel / 4
-----------------------------	------------

Gearbox / Number of gears	Automatic / 7
----------------------------------	---------------

Type of drive	Front drive
----------------------	-------------

Type of vehicle	Station wagon
------------------------	---------------

Colour / colour code	Energy-blau Uni
-----------------------------	-----------------

Doors / Seats	5 / 5
----------------------	-------

Upholstery type	Cloth
------------------------	-------

Colour of upholstery	Black-Anthracite
-----------------------------	------------------

Re-import	no
------------------	----

readiness to drive	Roadworthy
---------------------------	------------



Vehicle details			
Maintenance booklet / proof	digital proof / complete	Next maintenance in	14,900 km
Last service on / at	01/2026 at 20,385 km		
Key is / should be	2 / 2	FZG documents	ZB#2 (B) was available (copy), ZB#1 (S) was not available.
		Letter No.	HB694196
Previous damage / Accident	None detectable	Repainting	None detectable
Inspection conditions	sufficient	Lifting equipment / pit	yes
Test drive	Not performed	Engine function test	Performed
readiness to drive	Roadworthy		
Manufacturer key number/ type code number	8004 / AWL 00379		
Emission standard	EURO6;WLTP;AP;PI/CI; M, N1 I	fine dust sticker	
Permitted total weight	1,990 kg	Empty weight	

Tyres

Mounted tyres				
#	Tyre size	Type of tyre	Manufacturer	Tread depth
1)	225/45 R18 91Y	Summer tyres on Light alloy	Goodyear	6mm / 6mm
2)	225/45 R18 91Y	Summer tyres on Light alloy	Goodyear	6mm / 6mm
Additional tyres				
#	Tyre size	Type of tyre	Manufacturer	Tread depth
1)	205/60 R16 92H	Winter tyres on Light alloy	Continental	6mm / 6mm
2)	205/60 R16 92H	Winter tyres on Light alloy	Continental	6mm / 6mm
Replacement				
Typ	Tyre size	Type of tyre	Manufacturer	Tread depth
	Tirefit	Expiration date 10/2027		

Legend: Tread depth information for the left tire is listed first, for the right tire it is listed second on the axle in the direction of travel.

TÜV SÜD Auto Partner GmbH
Wiesenring 2
04159 Leipzig

Inspection location
Hartmann Fleet Professionals GmbH
Industriestraße 11
36272 Niederaula



Equipment



Standard equipment

- Storage compartment in the luggage compartment
- Airbag, driver and passenger
- Airbag, head airbags
- Airbag: Center airbag front
- Traction control (ASR)
- Electrically adjustable and heated exterior mirrors
- Electrically folding exterior mirrors
- roof grab handles four
- AERO roof rails in gloss black
- Digital Cockpit Plus
- Third brake light
- Electronic parking brake including auto-hold function
- Electronic Stability Control (ESC)
- Chassis: Sport chassis
- High beam assist
- Front radar assistant (Front Assist)
- Removable luggage roller blind
- Transmission: 7-speed dual-clutch transmission (DSG)
- Tinted windows
- Rear window wiper including windshield washer system
- Interior mirror automatically dimming
- Child safety lock for the rear doors and windows
- Climatronic air conditioning (2-zone)
- Paint finish: Solid
- LED headlights with LED daytime running lights
- Steering wheel: Sport design steering wheel
- Reading lights two at the front
- Manual headlight range adjustment
- Engine drag torque control (MSR)
- Fatigue detection
- Pedals in stainless steel look
- Radio: Music system
- Radio accessories: 2 x USB charging ports in the rear and USB charging port in the rearview mirror
- Radio accessories: Digital radio reception DAB+
- Umbrella and broom compartments in the front doors
- Tire pressure monitoring
- Wheels: 17" Mensa AERO alloy wheels
- Rear view camera
- Seat belts
- Seats: Heated front seats
- Seats: Sports seats with integrated headrests in the front and height-adjustable headrests in the rear.
- Seats: Front seats are height-adjustable
- Sun visors with illuminated make-up mirror on driver and passenger side
- Telephone: Phonebox with inductive charging function (connection via external antenna)
- Glazing: Acoustic glazing in the front side windows and Sunset
- Immobiliser
- Storage compartments
- Airbag, driver's knee airbag
- Airbag, front side airbags
- Anti-lock braking system (ABS)
- Automatically dimming exterior mirror (driver's side)
- Exterior mirrors painted black, door handles in body color
- Hill start assist
- black headliner
- Diesel particulate filter
- Tachometer
- Ice scraper in the fuel filler flap
- Electronic transverse differential lock (XDS+)
- Driving profile selection
- Electric windows front and rear, including anti-pinch protection and child safety lock
- Front and rear footwell lighting
- Cruise control system (cruise control) including speed limiter
- Heated rear window
- Interior: Design Selection Sportline
- ISOFIX preparations on the front passenger seat and the outer rear seats including top tether anchorage
- Black radiator grille frame
- LED taillights in crystal glass look
- Steering wheel: Height and reach adjustable leather steering wheel with multifunction buttons including paddle shifters.
- Front center armrest, including storage compartment
- Multi-collision brake
- Front and rear parking sensors
- Progressive steering
- Radio accessories: 2 USB ports at the front
- Radio accessories: 8 speakers
- Radio accessories: Bluetooth hands-free system
- Radio accessories: Wireless & Wired SmartLink
- Rain sensor and driving light assistant (Easy Light Assist)
- Tire mobility kit
- Wheels: 18" Vega AERO alloy wheels, black gloss-turned
- Electromechanical power steering
- Safety lights in the front side doors
- Seats: Rear seat backrest split 60:40, foldable
- Seats: Pockets on the backs of the front seats including smartphone pockets
- SKODA Care Connect
- Lane keeping assistant (Lane Assist)
- 12V socket in the trunk
- Travel Assist (DSG)
- Front door sill trims
- Traffic sign recognition
- Lashing eyes in the trunk
- Central locking including remote control integrated into the key and EASY Start



Extra equipment

- Luggage net partition
- P.: Info. Bus.Columbus (Sportline) DSG WCN,YOZ
- Package: Security WSQ
- Rubber floor mat set - 5E4061500 Price incl. installation
- Package: Light WL1

Brief expert findings

Documents submitted	At the time of the inspection, the vehicle registration certificate Part 2 (title) was available, but the vehicle registration certificate Part 1 (document) was not. (Copy)
VIN comparison	The vehicle identification number (VIN) was read from the vehicle and its conformity with the submitted documents was confirmed by the undersigned during the inspection.
Inspection	The inspection conditions were sufficient for the assessment of the vehicle. Lifting equipment and/or a pit were available for examining the vehicle.
Test drive	No test drive/shunting maneuver was carried out during the inspection of the vehicle.
Engine function test	An engine test run was performed.
readiness to drive	The vehicle was roadworthy at the time of inspection.

Value reducing factors

No.	Component group	Description
1	Body	Body - Glued / labelled - De-glue / neutralise
2	Bonnet	Insulation lining - Damage caused by marten / rodent - Replace
3	Door - rear left side	Door - dent(s) - Smooth repair work

Wear and tear

No.	Component group	Description
1	Misc.	Main inspection - No evidence - No deduction

The vehicle shows signs of wear and tear commensurate with its age and use.

Order/Scope of Order

An order was placed to prepare a sales report for the described vehicle. This report includes the following:

- Description of key vehicle information
- Documentation of equipment features
(*Delivery by third-party service providers*)
- Documentation of damage, defects, missing parts
- Documentation of prior damage, unrepaired prior damage, repainting
- A brief visual or functional inspection of the equipment details, if possible.
(*Functional testing of driver assistance systems is not included in the scope of services!*)
- a photographic documentation of the vehicle



Basis for the order

This product is based on the guidelines for vehicle returns and valuations published by Alphabet Fleet GmbH. The expert makes the specific findings in each individual case objectively, within the framework of the prescribed standards, based on their own expertise.

The vehicle inspection takes place in a fully assembled, unassembled state.

Damage or defects that can only be detected during disassembly/diagnostic work or through further investigation remain within the realm of prognostic risk. An increased risk exists due to concealed defects caused by fraudulent misrepresentation and which were not identifiable by the expert.

Damage or defects resulting from normal use or wear and tear of the vehicle will be accepted in accordance with the applicable standard.

There was no explicit identification or monetary consideration of the expected features within the product.

Features which, in their nature and extent, slightly exceed normal use but do not constitute unacceptable damage, will be documented and indicated as signs of wear, if applicable.

Damage or defects that, according to the applicable standard, can no longer be attributed to normal use or wear and tear are listed under "Value Reducing Factors" in the product description.

Depending on the product specification, a monetary ID can be provided. If this takes place, the costs can be 100% d or pro rata depending on the vehicle's age and mileage.

Previous damages

No apparent prior damage that had been repaired could be found on the vehicle.

Comments

- Für den montierten Radsatz wurde kein Nachweis erbracht.
- Winterradsatz ist kein Bestandteil des Auslieferungsumfangs.



Figure 1: Diagonal front (left)



Figure 2: Diagonal front (right)



Figure 3: Diagonal rear (left)



Figure 4: Diagonal rear (right)



Figure 5: Interior - front



Figure 6: Interior - rear



Figure 7: Instrument cluster



Figure 8: Instrument panel



Figure 9: Interior 360° view



Figure 10: Cargo area



Figure 11: VIN



Figure 12: Mounted tyres



Figure 13: Documents



Figure 14: Additional tyres

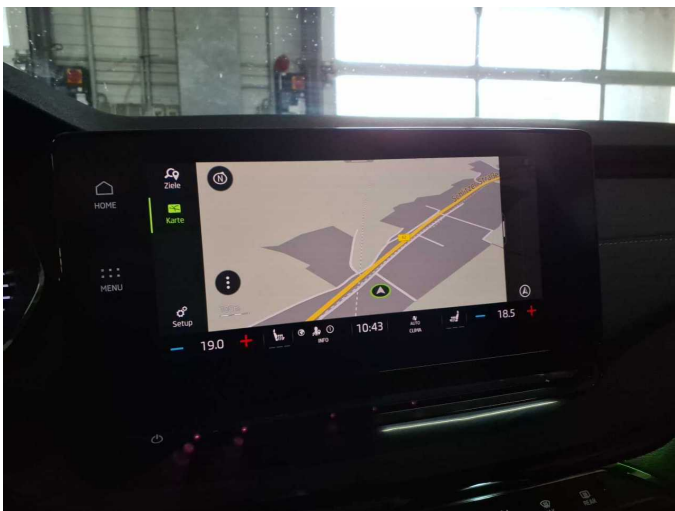


Figure 15: Navigation

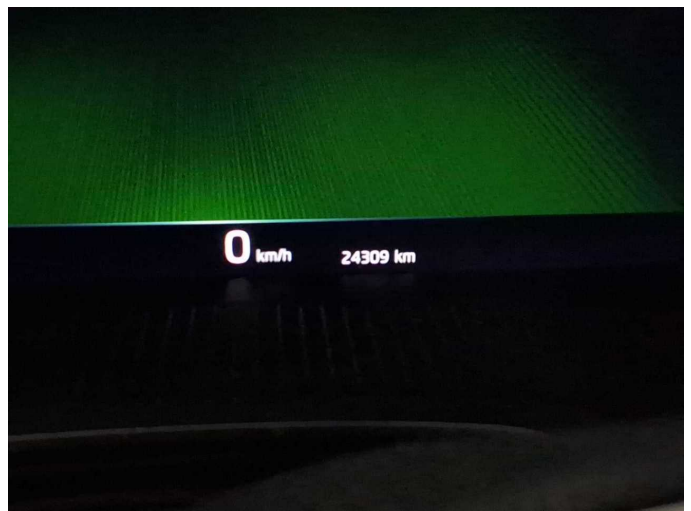


Figure 16: Misc.



Figure 17: Misc.



Figure 18: Misc.

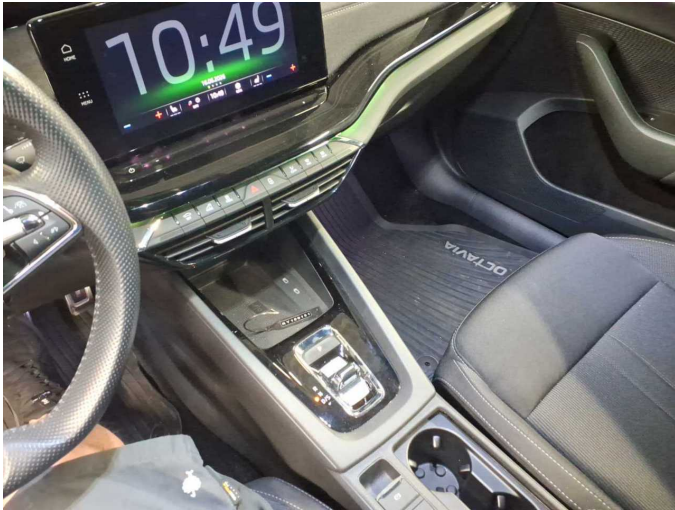


Figure 19: Misc.



Figure 20: Misc.



Figure 21: Misc.

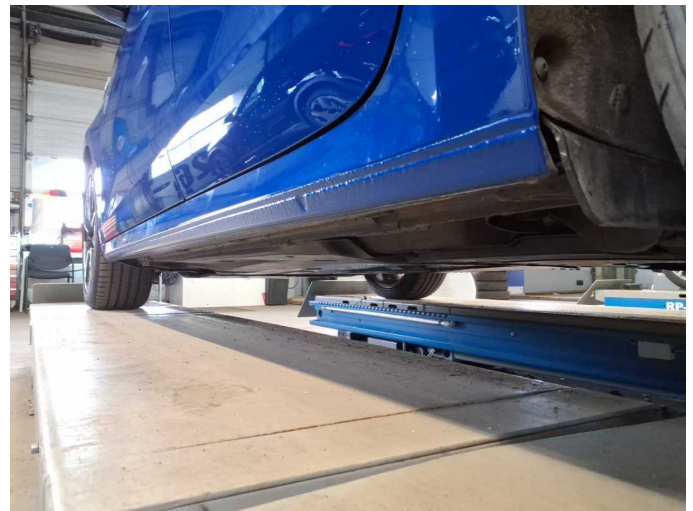


Figure 22: Misc.

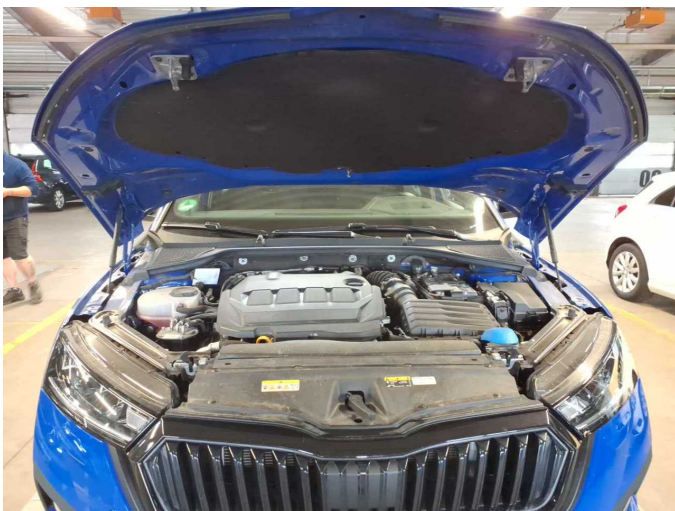


Figure 23: Misc.

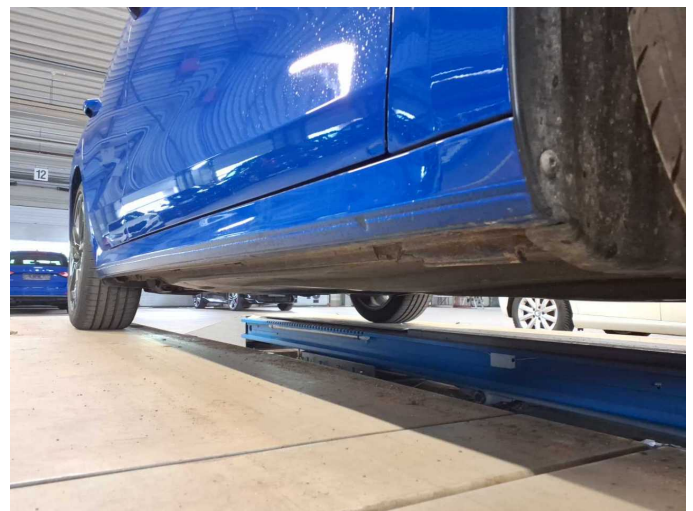


Figure 24: Misc.



Figure 25: Misc.



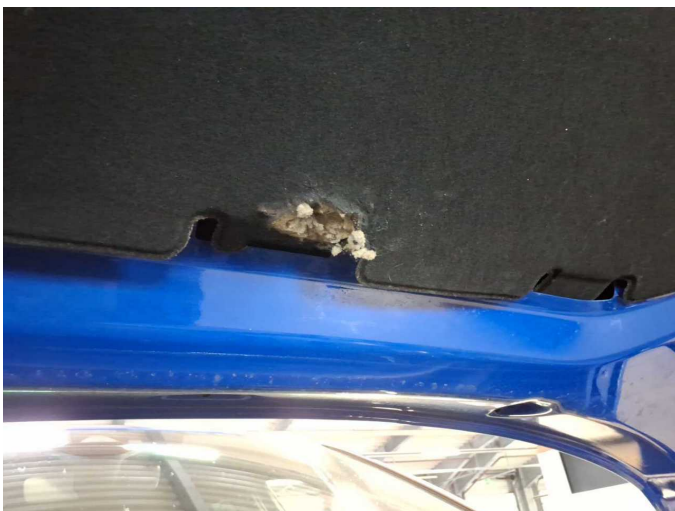
Figure 26: Misc.



Damage 1: Body: Body - Glued / labelled - De-gue / neutralise



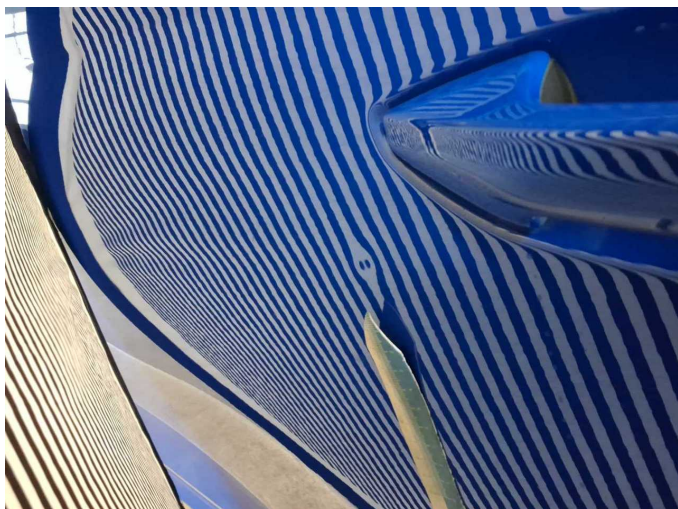
Damage 2: Bonnet: Insulation lining - Damage caused by marten / rodent - Replace



Damage 2: Bonnet: Insulation lining - Damage caused by marten / rodent - Replace



Damage 3: Door - rear left side: Door - dent(s) - Smooth repair work



Damage 3: Door - rear left side: Door - dent(s) - Smooth repair work



Wartungshistorie

(gemäß Auftraggeber Informationen)

Fahrgestellnummer: TMBJJ0NX7RY100151

Hersteller / Modell: SKODA SKODA Octavia Combi 2.0 TDI DSG Sportline

Datum	KM-Stand	Beschreibung
30.01.2026	20.385	Bremsflüssigkeit; Bremsflüssigkeit ern; Regelwartungsdienst
10.09.2025	17.055	Motoröl b. Wartung; Ölwechsel