



PEUGEOT 3008: GB-522-FN

Vinnumber:	VF3MCYHZUMS180535	Versionname:	PEUGEOT 3008 BlueHdi 130 S&S EAT8 Active Busine
First Registrationdate:	13/08/2021	Fiscalpower:	VP [5P] bva 8-130CH-7cv (SUV)
Expertise Mileage:	90395	Power Kw:	96
Bodytype:	SUV	Body colour:	Dark Grey
Gearbox:	Automatic	Paint type:	Metalic
Transmission:	Front	Interior colour:	Black
Fueltype:	Diesel	Type of rims (mounted):	Aluminium
Engine functioning:	Yes	Dashboard color:	Black
Battery functioning:	Yes		
Vehicle running:	Yes		
Number of doors:	5		
Number of seats:	5		
Number head rests:	5		
Type of rims (mounted):	Aluminium		
Category:	Passenger Car		

Options

Number of keys total	1	Radio	
Number keys remote	1	Central consol F	
GPS big screen color		Luggage cover	
Windows electric F		Headlights Xenon/LED/Laser	
Windows electric R		Front parking sensors	
Cruise Control		Rear parking sensors	
Steering wheel multifunctional		Rear view camera	
Steering wheel leather		Seat cover lining	Lining Other
Type of climate control	Autom climate control		

Tyres

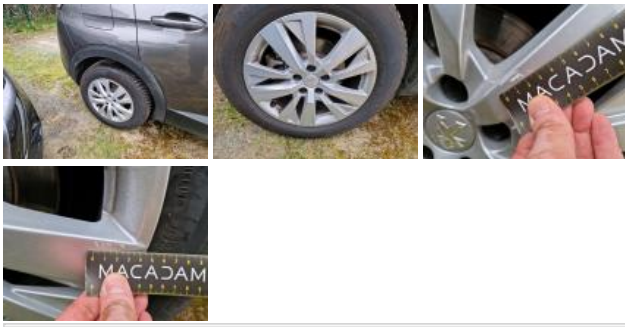
215/65/17/103 V				
Summer tyres:	Fr.L.	Michelin: 40%	Fr.R.	Michelin: 40%
	Re.L.	Michelin: 20%	Re.R.	Michelin: 35%
Tyre profile depth FL				5.6
Tyre profile depth FR				5.5
Tyre profile depth RL				6.8
Tyre profile depth RR				5.9
Tyre size FL				215/65 R 17 103 V
Tyre size FR				215/65 R 17 103 V
Tyre size RL				215/65 R 17 103 V
Tyre size RR				215/65 R 17 103 V
Tyre type FL				All seasons
Tyre type FR				All Seasons
Tyre type RL				All seasons
Tyre type RR				All Seasons
Tyre make FL				261
Tyre make FR				261
Tyre make RL				261
Tyre make RR				261

Assistance equipment

Remote ignition key (no insert), Missing, Repair/replace (lump sum)



Alloy rim RR, Scratch(es), Repair/replace (lump sum)



Alloy rim FR, Scratch(es), Repair/replace (lump sum)



Alloy rim RL, Scratch(es), Repair/replace (lump sum)



Wing RL, Dent(s) and scratch(es), Repair and paint (complete)



Wing trim RL, Scratch(es), Replace



Door FL, Scratch(es), Paint



Door RR, Scratch(es), Polish



Historique Maintenance

Immatriculation: **GB-522-FN**

Date de 1ère immatriculation: **13/08/2021**

Modèle: **Peugeot 3008 BlueHDi 130 S&S EAT8 Active Busine VP [5P] bva 8-130CH-7cv (SUV)**

Date	Kilométrage	Fournisseur	Descriptif
06/10/2025	82.849	GIGLIO	BATTERIE RPLT
	0		PLAQUETTES AR RPLT
	0		DISQUES PLAQUETTES AV RPLT
	0		LIQUIDE DE FREIN
	0		REVISION ET CLIM
31/07/2025	80.485	DEKRA AUTOMOTIVE S.A	CONTROLE TECHNIQUE
23/09/2024	63.165	GARAGE DE L EGLISE	FILTRE A CARBURANT CTRL
	0		REVISION
	0		FILTRE A AIR RPLT
	0		DIVERS
	0		BALAI ESSUIE GLACE AV AR
20/09/2023	41.556	BERNIER ESSONNE	LIQUIDE DE FREIN
	0		FILTRE CLIM RPLT
	0		REVISION
	0		BALAI ESSUIE GLACE AR
	0		BALAI ESSUIE GLACE AV
	0		PLAQUETTES AV RPLT
26/08/2022	19.170	BERNIER ESSONNE	ADBLUE
	0		REVISION