

## Expertise

Protocol number: 46265830  
Order No. / Reference: 26522198  
Inspection date: 1 Jul 2026

Manufacturer: Renault

Model: Kangoo TCe 130 EDC Techno

VIN: VF1RFK00370022925



### Vehicle details

#### Manufacturer / Type / Model / Equipment

Renault Kangoo TCe 130 EDC Techno

**Vehicle Identification number** VF1RFK00370022925

**Mileage (Read)** 34,815 km

**First registration** 27 Jul 2023

**Number of holders** 1

**Next periodical technical inspection** 07/2027  
(Report not on hand)

**Power / Engine displacement** 96 kw / 1,332 ccm

**Fuel type / Cylinder** Petrol / 4

**Gearbox / Number of gears** Automatic / 7

**Type of drive** Front drive

**Type of vehicle** Station wagon

**Colour / colour code** Karmesinrot Metallic

**Doors / Seats** 6 / 5

**Upholstery type** Cloth / leather  
combination

**Colour of upholstery** Black



## Vehicle details

<b>Maintenance booklet / proof</b>	Non-existent	<b>Next maintenance in</b>	13,500 km
<b>Last service on / at</b>	04/2025 at 28,741 km		
<b>Key is / should be</b>	2 / 2	<b>FZG documents</b>	ZB#2 (B) was available (copy), ZB#1 (S) was not available.
		<b>Letter No.</b>	GV534449
<b>Previous damage / Accident</b>	None detectable	<b>Repainting</b>	None detectable
<b>Inspection conditions</b>	sufficient	<b>Lifting equipment / pit</b>	No
<b>Test drive</b>	Not performed	<b>Engine function test</b>	Performed
<b>Manufacturer key number/ type code number</b>	3333 / BPJ 00149		
<b>Emission standard</b>	EURO6;WLTP;AP;PI/CI; M, N1 I	<b>fine dust sticker</b>	
<b>Permitted total weight</b>	2,090 kg	<b>Empty weight</b>	

## Tyres

### Mounted tyres

#	Tyre size	Type of tyre	Manufacturer	Tread depth
1)	205/55 R17 95H	Summer tyres on Light alloy	Continental	5mm / 5mm
2)	205/55 R17 95H	Summer tyres on Light alloy	Continental	6mm / 6mm

**Legend: Tread depth information for the left tire is listed first, for the right tire it is listed second on the axle in the direction of travel.**



## Equipment

### Standard equipment

- Storage compartment above the driver's seat
- Airbag: Front side airbags
- Analog speedometer instrument with 4.2-inch TFT display
- Exterior mirrors (2) electrically adjustable, folding and heated
- Innovative roof rails including roof rack
- eCall emergency call system
- Electronic Stability Program (ESP)
- electric front windows
- Speed limiter with cruise control
- Tailgate with window
- Air conditioning, 2nd row of seats
- Rear headrests (3)
- LED daytime running lights with C-shaped light signature
- Light and rain sensor
- front center armrest
- Emergency braking assistant with pedestrian, cyclist and intersection detection
- Package: Comfort Package
- Upholstery: Cloth
- Indirect tire pressure monitoring system
- Wheels: Tire repair kit
- Sliding door - rear left side
- Power steering
- Seats: Comfort single passenger seat
- Seats: Rear bench seat split 1/3 to 2/3, foldable
- Lane Departure Warning/Assistant
- Bumpers in body color
- Exterior door handles in car color
- Immobiliser
- Airbag: Airbag for driver and front passenger
- Airbag: Windowbags
- Anti-lock braking system
- Hill start assist
- third brake light
- Tachometer
- Front, rear and side parking assistance, acoustic
- Windows: Heavily tinted rear and side windows
- High beam assist
- Transmission: Automatic transmission (7-speed)
- Isofix child seat anchorage system
- Front headrests (2)
- Paint finish: Solid
- Steering wheel: in premium leather look, adjustable for reach and height
- Fatigue detection
- Otto particulate filter
- Package: Family Package
- Package: Seat Package
- Radio: EASY LINK
- Wheels: 17" alloy wheels VERESTE
- Rear view camera
- Sliding door - rear right side
- Seat belts
- Seats: Driver's seat height adjustable
- Front sun visors (2)
- Power outlet: 12V connection in the trunk and USB connection in the 2nd row of seats
- Full LED headlights LED PURE VISION
- Central locking with radio remote control

### Extra equipment

- Adaptive Cruise Control (ACC)
- Towbar including installation
- 7-inch digital instrument panel
- Electronic parking brake
- High beam assist PRAH
- Asymmetrical rear doors (with rear window wiper, including rear window heating)
- Radio: EASY LINK with 8-inch smartphone integration and navigation (navigation system with map data for Europe - online multimedia system with 8-inch touchscreen - smartphone integration via Android Auto and Apple CarPlay - DAB+ digital radio, FM and AM radio - Bluetooth hands-free system - AUX and USB connection, audio streaming - voice control - steering wheel controls)
- Alarm system
- Highway and traffic jam assistant
- Front and rear parking aid (acoustic, including Easy Park Assist)
- Luggage net
- Paint finish: Metallic
- Fog lights (with cornering lights)
- Reversing camera RRCAM
- Drawer, EASY-LOAD BTGA3
- Seats: Passenger seat foldable
- Smartphone holder and 2 USB ports
- Superlock
- Blind Spot Warning System BSD02



## Brief expert findings

Documents submitted	At the time of the inspection, the vehicle registration certificate Part 2 (title) was available, but the vehicle registration certificate Part 1 (document) was not. (Copy)
VIN comparison	The vehicle identification number (VIN) was read from the vehicle and its conformity with the submitted documents was confirmed by the undersigned during the inspection.
Inspection	The inspection conditions were sufficient for the assessment of the vehicle. No lifting equipment or pit was available for inspecting the vehicle. Therefore, inspection of the vehicle's underside was only possible to a limited extent.
Test drive	No test drive/shunting maneuver was carried out during the inspection of the vehicle.
Engine function test	An engine test run was performed.

## Value reducing factors

No.	Component group	Description
1	Door - front left side	Door edge - Scratch(es) - Smart repair
2	Door - front right side	Door - Scratch(es) - Smart repair
3	Side panel - rear right side	Side panel - Scratch(es) - Paint

## Wear and tear

No.	Component group	Description
1	Front bumper	Front bumper - Stone chips - No deduction
2	Bonnet	Bonnet - Stone chips - No deduction
3	Vehicle glazing	Windscreen - Stone chips - No deduction
4	Interior	Interior - Scratch(es) - No deduction
5	Rear bumper	Rear bumper - Scratch(es) - No deduction
6	Boot lid / rear door	Rear door - left side - Scratch(es) - No deduction

The vehicle shows signs of wear and tear commensurate with its age and use.

## Order/Scope of Order

An order was placed to prepare a sales report for the described vehicle. This report includes the following:

- Description of key vehicle information
- Documentation of equipment features  
(*Delivery by third-party service providers*)
- Documentation of damage, defects, missing parts
- Documentation of prior damage, unrepaired prior damage, repainting
- A brief visual or functional inspection of the equipment details, if possible.  
(*Functional testing of driver assistance systems is not included in the scope of services!*)
- a photographic documentation of the vehicle



## Basis for the order

This product is based on the guidelines for vehicle returns and valuations published by Alphabet Fleet GmbH. The expert makes the specific findings in each individual case objectively, within the framework of the prescribed standards, based on their own expertise.

The vehicle inspection takes place in a fully assembled, unassembled state.

Damage or defects that can only be detected during disassembly/diagnostic work or through further investigation remain within the realm of prognostic risk. An increased risk exists due to concealed defects caused by fraudulent misrepresentation and which were not identifiable by the expert.

Damage or defects resulting from normal use or wear and tear of the vehicle will be accepted in accordance with the applicable standard.

There was no explicit identification or monetary consideration of the expected features within the product.

Features which, in their nature and extent, slightly exceed normal use but do not constitute unacceptable damage, will be documented and indicated as signs of wear, if applicable.

Damage or defects that, according to the applicable standard, can no longer be attributed to normal use or wear and tear are listed under "Value Reducing Factors" in the product description.

Depending on the product specification, a monetary ID can be provided. If this takes place, the costs can be 100% d or pro rata depending on the vehicle's age and mileage.

## Previous damages

No apparent prior damage that had been repaired could be found on the vehicle.

## Comments

- Die Unterbodenbesichtigung war nur ebenerdig und eingeschränkt möglich.
- Mehrkosten möglich .



Figure 1: Diagonal front (left)



Figure 2: Diagonal front (right)



Figure 3: Diagonal rear (left)



Figure 4: Diagonal rear (right)

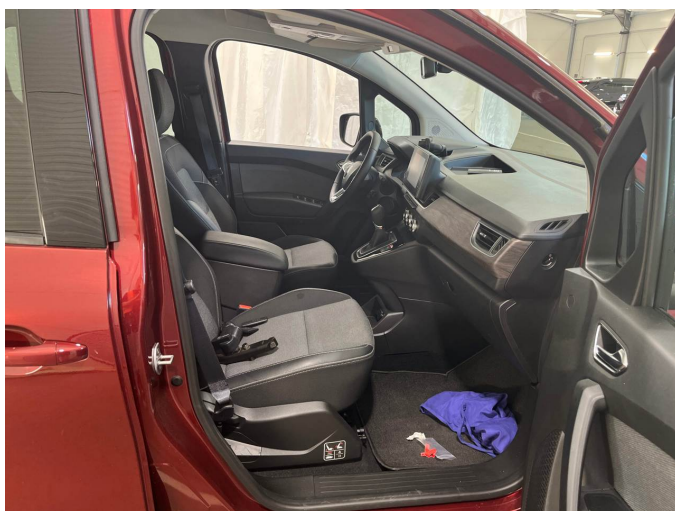


Figure 5: Interior - front



Figure 6: Interior - rear



Figure 7: Instrument cluster



Figure 8: Instrument panel



Figure 9: Interior 360° view



Figure 10: Cargo area



Figure 11: VIN



Figure 12: Mounted tyres





Figure 19: Misc.



Figure 20: Misc.



Figure 21: Misc.



Figure 22: Misc.



Figure 23: Misc.



Figure 24: Misc.



Figure 25: Misc.



Figure 26: Misc.



Figure 27: Misc.



Figure 28: Misc.



Figure 29: Misc.



Figure 30: Misc.



Figure 31: Misc.



Figure 32: Misc.



Figure 33: Misc.

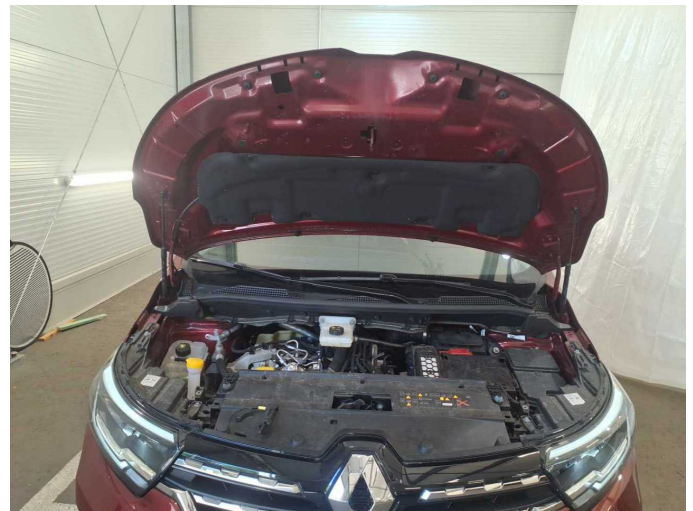


Figure 34: Misc.



Figure 35: Misc.



Damage 1: Door - front left side: Door edge - Scratch(es) - Smart repair



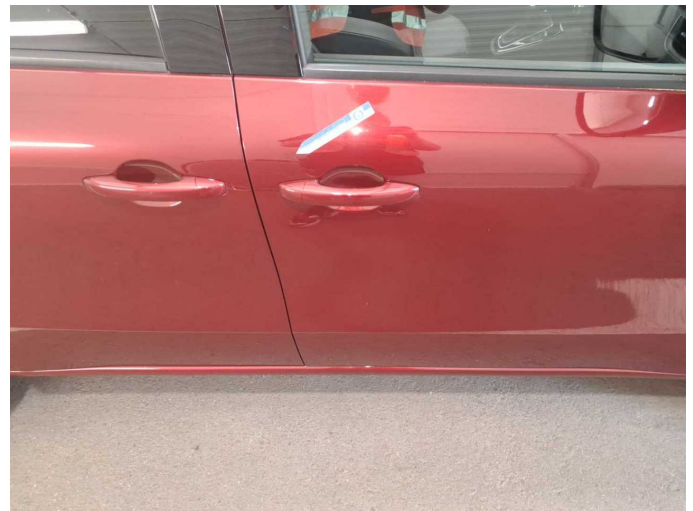
**Damage 1:** Door - front left side: Door edge - Scratch(es) - Smart repair



**Damage 2:** Door - front right side: Door - Scratch(es) - Smart repair



**Damage 2:** Door - front right side: Door - Scratch(es) - Smart repair



**Damage 2:** Door - front right side: Door - Scratch(es) - Smart repair



**Damage 3:** Side panel - rear right side: Side panel - Scratch(es) - Paint



**Damage 3:** Side panel - rear right side: Side panel - Scratch(es) - Paint



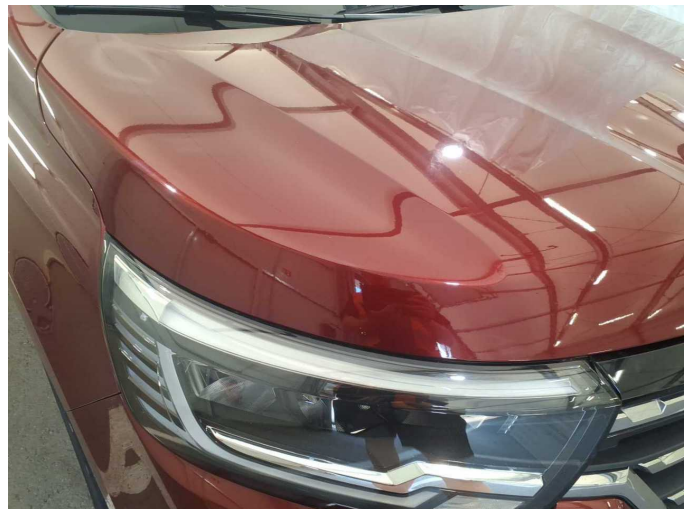
**Damage 3:** Side panel - rear right side: Side panel - Scratch(es) - Paint



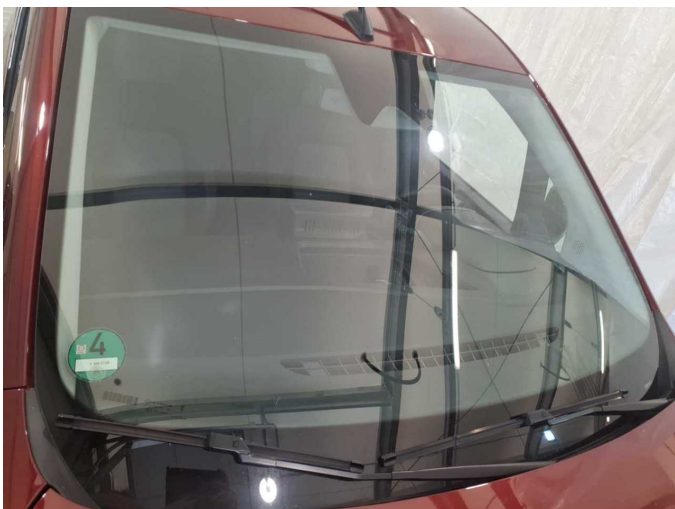
**Damage 3:** Side panel - rear right side: Side panel - Scratch(es) - Paint



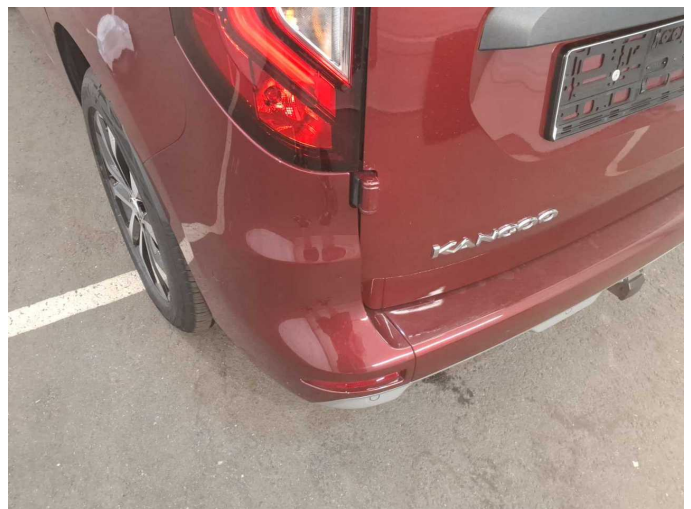
**Wear and tear 1:** Front bumper: Front bumper - Stone chips - No deduction



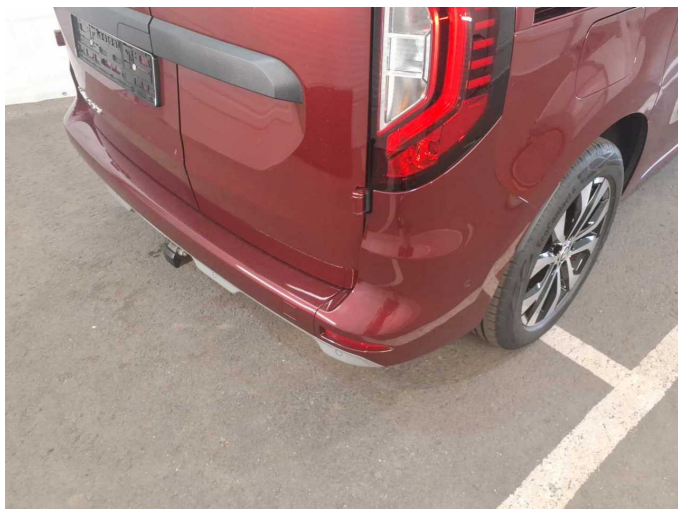
**Wear and tear 2:** Bonnet: Bonnet - Stone chips - No deduction



**Wear and tear 3:** Vehicle glazing: Windscreen - Stone chips - No deduction



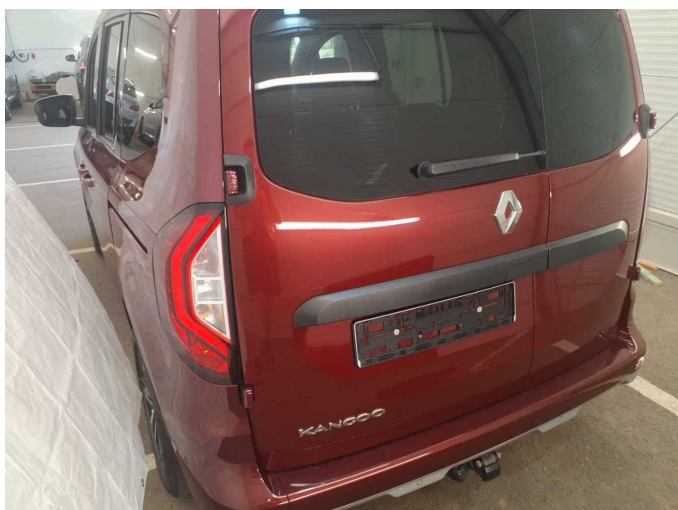
**Wear and tear 5:** Rear bumper: Rear bumper - Scratch(es) - No deduction



**Wear and tear 5:** Rear bumper: Rear bumper - Scratch(es) - No deduction



**Wear and tear 6:** Boot lid / rear door: Rear door - left side - Scratch(es) - No deduction



**Wear and tear 6:** Boot lid / rear door: Rear door - left side - Scratch(es) - No deduction



# Wartungshistorie

(gemäß Auftraggeber Informationen)

Fahrgestellnummer: VF1RFK00370022925

Hersteller / Modell: RENAULT RENAULT Kangoo TCe 130 EDC Techno

Datum	KM-Stand	Beschreibung
03.04.2025	28.741	Motoröl b. Wartung; Ölfilter ern; Regelwartungsdienst; Wartung Sonstiges