

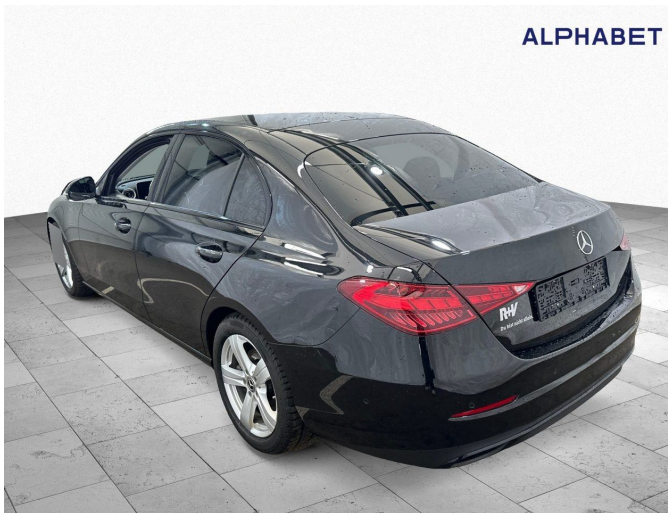
Expertise

Protocol number: 44397073
Order number / reference: 25890783
Inspection date: 12 Mar 2026

Manufacturer: Mercedes-Benz

Model: C 220 d 9G-TRONIC Avantgarde

VIN: W1K2060041F044646



Vehicle details

Manufacturer / Type / Model / Equipment

Mercedes-Benz C 220 d 9G-TRONIC Avantgarde

Vehicle Identification number	W1K2060041F044646
Mileage (Read)	96,900 km
First registration	3 Feb 2022
Number of holders	1
Next periodical technical inspection (Report on hand)	03/2027

Power / Engine displacement	147 kw / 1,993 ccm
------------------------------------	--------------------

Fuel type / Cylinder	Hybrid Diesel / E / 4
-----------------------------	-----------------------

Gearbox / Number of gears	Automatic / 9
----------------------------------	---------------

Type of drive	Rear drive
----------------------	------------

Type of vehicle	Saloon car
------------------------	------------

Colour / colour code	OBSIDIANSCHWARZ - METALLICLACK
-----------------------------	-----------------------------------

Doors / Seats	4 / 5
----------------------	-------

Upholstery type	Artificial leather
------------------------	--------------------

Colour of upholstery	Black
-----------------------------	-------

Re/Import	no
------------------	----

Vehicle with smoke odor	no
--------------------------------	----

readiness to drive	Roadworthy
---------------------------	------------



Vehicle details

Maintenance booklet / proof	digital proof / complete	Next maintenance in	0 km
Last maintenance on / at	03/2025 at 73,591 km		
Key is / should be	2 / 2	FZG documents	ZB#2 (B) was available (copy), ZB#1 (S) was not available
		Letter No.	GF785073
Previous damage / Accident	None detectable	Repainting	None detectable
Inspection conditions	sufficient	Lifting equipment / pit	No
Test drive	Not performed	Engine function test	Performed
readiness to drive	Roadworthy		
Manufacturer key number/ type code number	2222 / AYA 00117		
Emission standard	EURO6;WLTP;AP;PI/CI; M, N1 I	Fine dust sticker	
Permitted total weight	2,355 kg	Empty weight	

Tyres

Mounted tyres

#	Tyre size	Type of tyre	Manufacturer	Tread depth
1)	225/50 R17 98H	Winter tyres on Light alloy	Pirelli	5mm / 5mm
2)	225/50 R17 98H	Winter tyres on Light alloy	Pirelli	6mm / 6mm

Additional tyres

#	Tyre size	Type of tyre	Manufacturer	Tread depth
1)	225/50 R17 94Y	Summer tyres on Light alloy	Bridgestone	4mm / 4mm
2)	225/50 R17 94Y	Summer tyres on Light alloy	Bridgestone	5mm / 5mm

Legend: Tread depth for tires on the left is in the first place, for tires on the right is in the second place on the axle in the direction of travel



Equipment

Standard equipment

- Adaptive High Beam Assistant
- Airbag: Automatic passenger airbag deactivation
- Airbag: Sidebag for driver and front passenger
- Ambient lighting with 64 light colors
- Basic services
- Brake assist, active
- diesel particulate filter
- DYNAMIC SELECT
- Driver display
- 4-way electric window lifter
- Fingerprint scanner
- Speed Limit Assistant
- Rear window wiper
- Interior headliner fabric crystal grey
- KEYLESS-GO start function
- THERMATIC automatic climate control with 2 climate zones
- Front headrests
- Paint finish: Uni
- Steering wheel: Multifunction sports steering wheel in leather
- Navigation: MBUX Navigation Premium
- Package: Interior lighting package
- Package: Seat comfort
- Package: USB
- Radio: Extended MBUX functions
- Radio accessories: Digital radio (DAB)
- Radio accessories: Central display
- Tire pressure monitoring (TPMS)
- Wheels: 43.2 cm (17") alloy wheels with 10 double-spoke design
- Seats: Heated seats for driver and front passenger
- Lane Keeping Assist, active
- Phone accessories: Smartphone integration
- Cruise control
- Fully digital instrument display
- High-visibility vest for drivers
- Central locking with remote control
- Airbag for driver and front passenger
- Airbag: Center airbag
- Airbag: Windowbag for driver and front passenger
- Left and right exterior mirrors are heated and electrically adjustable
- Roof rails in matte black
- Double cup holder at the front
- Electronic Stability Program (ESP)
- Chassis: AGILITY CONTROL chassis with selective damping system with lowering
- Velour floor mats
- Transmission: Automatic 9-speed, 9G-TRONIC
- Heated rear window
- ISOFIX child seat attachment with Top Tether in the rear
- Mechanical child safety lock for the rear doors
- Rear headrests (3)
- Fuel tank with larger volume 66 l
- LED high-performance headlights
- Mercedes-Benz emergency call system
- Center console in high-gloss black
- Package: Storage
- Package: Parking package with rear view camera
- Package: Mirror Package
- Upholstery: ARTICO leatherette/fabric
- Radio: MBUX multimedia system
- Radio accessories: Communication module (LTE) for the use of Mercedes me connect services
- Remote Services
- Windscreen wipers with rain sensor
- Power steering
- Seats: Rear seat backrests foldable
- Phone accessories: Wireless charging system for mobile devices
- TIREFIT with tire inflation compressor
- Pre-installation for digital key handover
- Electronic immobilizer
- Decorative elements in diamond pattern, silver-grey

Extra equipment

- DIGITAL LIGHT (HD system with projection module (more than 1 million pixels per headlight) - MULTIBEAM LED background module - Topography compensation - Adaptive Highbeam Assist Plus - ULTRA RANGE high beam - Active cornering lights with predictive control - Extended fog lights, turning lights, country road lights, city lights, bad weather lights, as well as motorway lights and motorway high beams with optimized illumination of the road surface for the driving situation - Turning lights with roundabout and intersection warning - Off-road lights for vehicles - Adaptive full LED rear lights)
- Airbag: Side airbags in the rear
- Ambient lighting with 64 light colors (Directly illuminated trim strip from the sides of the center console across the instrument panel to the door handles of the front and rear doors and the rear side panels - Additional lighting on the air vents and the door center panels and the rear side panels - Four dimming zones (Total, Direct, Ambient and Accent) - Variable brightness setting - 64 colors - Ten color moods - Integrated into the ENERGIZING Comfort Control programs)
- Center console diamond pattern silver grey



- Package: Parking package with 360° camera (12 ultrasonic sensors: six each in the front and rear bumpers - 360° camera - Active Parking Assist with PARKTRONIC: detects parking spaces, assisted parking, assisted exiting, visual and acoustic warning of detected obstacles according to distance and position, display of camera and ultrasonic data in the central display, button for Active Parking Assist with PARKTRONIC - cross traffic warning - maneuvering braking - drive-away assist)
- Traffic Sign Assistant (Networked system consisting of a camera behind the windshield and navigation maps - Early detection of speed limits and display of prohibitions and their cancellation in the driver display and the optionally available head-up display - Visual and optionally acoustic warning when the speed limit is exceeded - Can detect no-entry signs, providing a visual and acoustic warning)
- Wheels: 43.2 cm (17") light alloy wheels in 5-spoke design (black painted and polished with 225/50 R 17 on 7 J x 17 ET 44.5)
- GUARD 360° Vehicle Protection Plus (Anti-theft alarm system with pre-installation for collision detection - interior protection)
- Heat-insulating dark tinted glass
- Paint finish: metallic
- Radio accessories: Advanced Sound System (4 midrange speakers - 2 tweeters - 2 front bass speakers - 1 center speaker - 225 W amplifier power)
- Radio accessories: Pre-installation for MBUX Entertainment (integration of music streaming services (user account required): Spotify, Amazon Music, Apple Music, TIDAL, TuneIn (no user account required) - Extended radio information - Extended radio station tracking - Internet radio - Third-party convenience data volume)
- Type designation removed from trunk lid
- Upholstery: ARTICO two-tone leatherette
- Wheels: Winter complete wheels fitted ex works

Brief expert findings

Documents submitted	At the time of the inspection, the vehicle registration certificate Part 2 (title) was available, but the vehicle registration certificate Part 1 (document) was not. (Copy)
VIN comparison	The vehicle identification number (VIN) was read from the vehicle and its conformity with the submitted documents was confirmed by the undersigned during the inspection.
Inspection	The inspection conditions were sufficient for the assessment of the vehicle. No lifting equipment or pit was available for examining the vehicle. Therefore, inspection of the vehicle's underside was only possible to a limited extent.
Test drive	No test drive/shunting maneuver was carried out during the inspection of the vehicle.
Engine function test	An engine test run was performed.
readiness to drive	The vehicle was roadworthy at the time of inspection.

Value reducing factors

No.	Component group	Description
1	Boot lid / rear door	Boot lid - Glued / labelled - De-glue / neutralise
2	Door - front right side	Door - Dent / paintcoat damage - Smart repair
3	Misc.	Inspection / maintenance - Due - Perform

Wear and tear

No.	Component group	Description
1	Front bumper	Front bumper - Stone chips - No deduction
2	Interior	Interior - Soiled - No deduction
3	Bonnet	Bonnet - Stone chips - No deduction
4	Vehicle glazing	Windscreen - Stone chips - No deduction
5	Mudguard - left side	Mudguard - left side - Scratch(es) - No deduction

The vehicle shows signs of wear commensurate with its age and use.



Order/Scope of order

The order was placed to prepare a sales report for the vehicle described. This includes the following:

- Description of core relevant information about the vehicle
- Documentation of equipment features
(Delivery by third-party service providers)
- Documentation of damage, defects, missing parts
- Documentation of previous damage, unrepaired previous damage, repainting
- a brief visual or functional inspection of the equipment details if possible.
(Functional tests of driver assistance systems are not included in the scope of services!)
- a photo documentation of the vehicle

Basis for the order

This product is based on the Alphabet Fuhrpark GmbH guidelines for vehicle returns and valuations. The expert makes the explicit findings in each individual case objectively within the framework of the specified standards based on his or her own expertise.

The vehicle inspection takes place in a disassembled state.

Damage or defects that can only be detected during disassembly/diagnosis work or through advanced knowledge remain within the scope of the prognosis risk. An extended risk exists for concealed defects caused by fraudulent deception and not identifiable by the expert.

Damage or defects resulting from normal use or wear and tear of the vehicle will be accepted according to the applicable standard.

There was no explicit identification or monetary consideration of the expected features within the product.

Features which in their nature and severity slightly exceed normal use but do not constitute unacceptable damage will be documented and identified under signs of use if necessary.

Damage or defects that can no longer be attributed to normal use or wear and tear according to the underlying standard are listed in the product under value-reducing factors.

Depending on the product specification, a monetary ID can be provided. If this takes place, the costs can be 100% d or pro rata depending on the vehicle's age and mileage.

Previous damages

No apparent prior damage that had been repaired could be found on the vehicle.



Figure 1: Diagonal front (left)



Figure 2: Diagonal front (right)

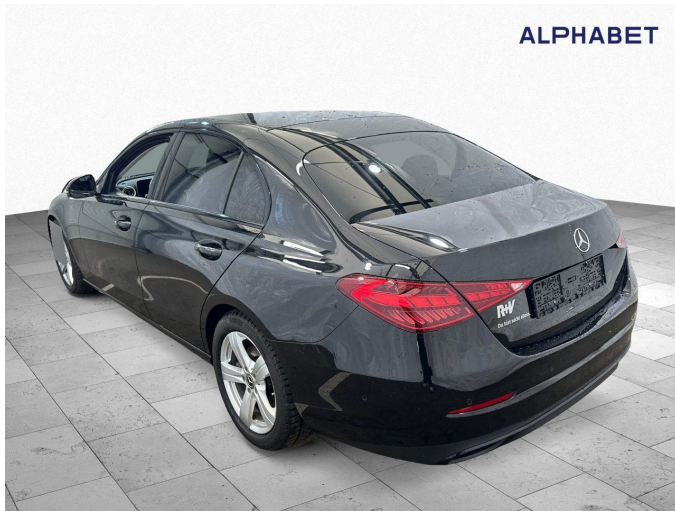


Figure 3: Diagonal rear (left)



Figure 4: Diagonal rear (right)



Figure 5: Interior - front



Figure 6: Interior - rear



Figure 7: Instrument cluster



Figure 8: Instrument panel



Figure 9: Interior 360° view



Figure 10: Cargo area



Figure 11: VIN



Figure 12: Mounted tyres



Figure 13: Documents



Figure 14: Documents

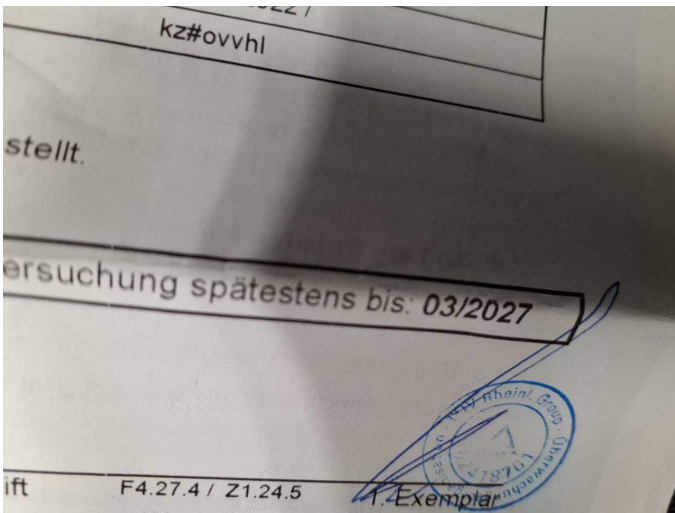


Figure 15: Documents



Figure 16: Additional tyres

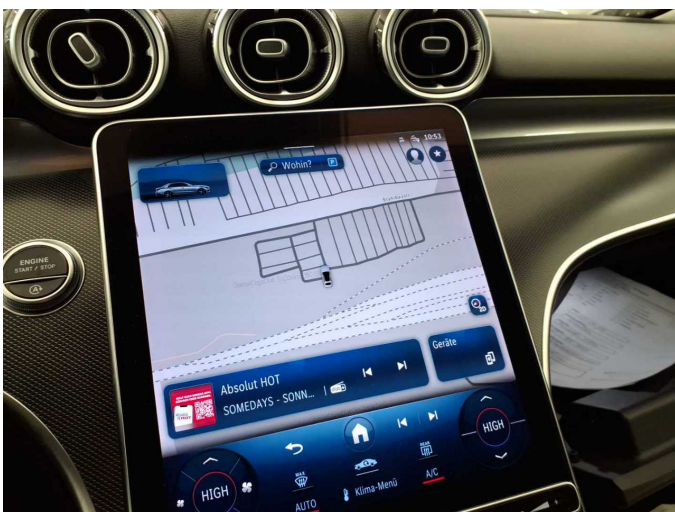


Figure 17: Navigation



Figure 18: Misc.



Figure 19: Misc.



Figure 20: Misc.



Figure 21: Misc.



Figure 22: Misc.

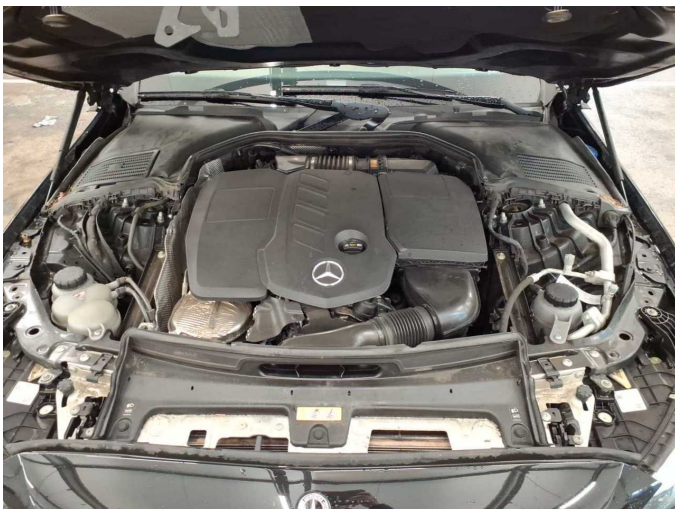


Figure 23: Misc.



Figure 24: Misc.



Figure 25: Misc.



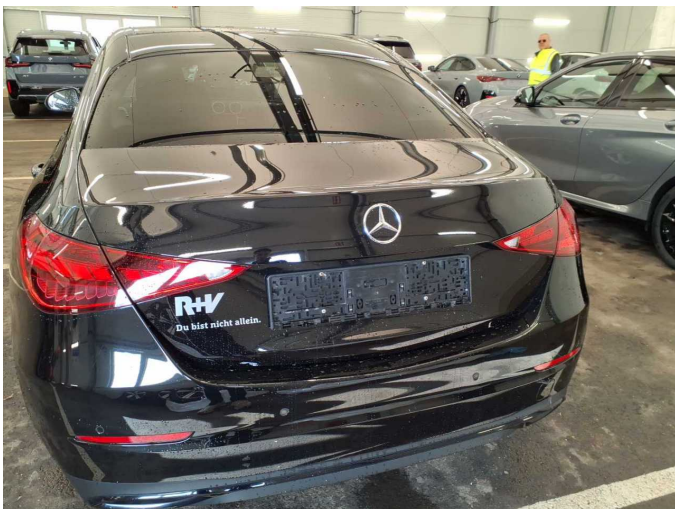
Figure 26: Misc.



Figure 27: Misc.



Figure 28: Misc.



Damage 1: Boot lid / rear door: Boot lid - Glued / labelled - De-glue / neutralise



Damage 2: Door - front right side: Door - Dent / paintcoat damage - Smart repair



Damage 2: Door - front right side: Door - Dent / paintcoat damage - Smart repair