

Expertise

Protocol number: 46294501
Order No. / Reference: 26600691
Inspection date: 30 Jun 2026

Manufacturer: Mercedes-Benz

Model: C 300 e T 9G-TRONIC AMG Line

VIN: W1KAH5EB1PF099266



Vehicle details

Manufacturer / Type / Model / Equipment

Mercedes-Benz C 300 e T 9G-TRONIC AMG Line

Vehicle Identification number W1KAH5EB1PF099266

Mileage (Read) 67,116 km

First registration 1 Mar 2023

Number of holders 1

Power / Engine displacement 150 kw / 1,999 ccm

Fuel type / Cylinder Hybr.B/E ext.auf / 4

Gearbox / Number of gears Automatic / 9

Type of drive Rear drive

Type of vehicle Station wagon

Colour / colour code OBSIDIANSCHWARZ -
METALLICLACK

Doors / Seats 5 / 5

Upholstery type Alcantara / Leather

Colour of upholstery Anthracite-Black



Vehicle details

Maintenance booklet / proof	Non-existent	Next maintenance in	52 Tag(e)
Key is / should be	2 / 2	FZG documents	ZB#2 (B) was available (copy), ZB#1 (S) was not available.
		Letter No.	GQ158400
Previous damage / Accident	Detectable	Repainting	None detectable
Inspection conditions	sufficient	Lifting equipment / pit	No
Test drive	Not performed	Engine function test	Performed
Manufacturer key number/ type code number	2222 / BEP 00071		
Emission standard	EURO6;WLTP;AP;PI/CI; M, N1 I	fine dust sticker	
Permitted total weight	2,655 kg	Empty weight	

Tyres

Mounted tyres

#	Tyre size	Type of tyre	Manufacturer	Tread depth
1)	225/45 R18 95Y	Summer tyres on Light alloy	Goodyear	5mm / 5mm
2)	255/40 R18 99Y	Summer tyres on Light alloy	Pirelli	6mm / 6mm

Legend: Tread depth information for the left tire is listed first, for the right tire it is listed second on the axle in the direction of travel.

TÜV SÜD Auto Partner GmbH
Wiesenring 2
04159 Leipzig

Inspection location
Hartmann Fleet Professionals GmbH
Leerenstraße 25
29683 Bad Fallingbommel



Equipment



Standard equipment

- Airbag for driver and front passenger
- Airbag: Center airbag (Additional airbag for increased front occupant protection in the event of a side impact)
- Airbag: Sidebag for driver and front passenger (combined thorax/pelvisbag)
- Airbag: Windowbag for driver and front passenger
- Acoustic Surrounding Protection (To ensure that your electric vehicle does not become a danger to pedestrians and cyclists during almost silent driving, the Acoustic Surrounding Protection generates Mercedes-Benz specific sounds outside the vehicle up to a speed of approximately 30 km/h. It distinguishes between forward and reverse driving.)
- Basic services (breakdown management, maintenance management, accident management, telediagnosis, remote vehicle diagnostics)
- DYNAMIC SELECT (consisting of driving programs: Comfort, Sport, Eco mode)
- ECO start/stop function
- Electric windows (4-way)
- Speed Limit Assistant (The Speed Limit Assistant detects and displays speed limits.)
- Heated rear window
- Instrument panel and door sills in ARTICO man-made leather in black nappa look
- Mechanical child safety lock for the rear doors
- Rear headrests (3)
- Front headrests
- Charging cable for household socket, 5m, smooth (This charging cable, also called Mode 2 cable, allows you to charge the vehicle battery at the household socket with up to 1.8 kW (230 V, 1-phase, 8A) and fits sockets of type E/F CEE 7/7)
- Cargo area cover including EASY-PACK safety net
- Charging system: AC charging system 11kW (More flexibility: With the powerful AC charging system, you can charge your plug-in hybrid quickly and easily with up to 11 kW (3-phase) or 7.4 kW (1-phase). In addition to a wallbox at home, you can also connect your vehicle to a variety of public charging stations. These usually supply alternating current – just like conventional sockets.)
- Steering wheel: Multifunction sports steering wheel in Nappa leather (sporty steering wheel in a 3-twin-spoke design, flattened at the bottom - finished in Nappa leather, deeply embossed in the grip area - horizontal double spokes in high-gloss black, vertical double spokes in silver chrome - shift paddles in silver chrome - control via touch panels: left: instrument cluster, cruise control and limiter or Active Distance Assist DISTRONIC; right: multimedia system (e.g., audio volume and track selection, telephony and navigation), touch sensitivity adjustment)
- Center console in high-gloss black
- Airbag: Automatic passenger airbag deactivation (The system automatically deactivates the passenger airbag as soon as it detects a rear-facing child seat or registers that the passenger seat is unoccupied. A transponder in the child seat is not necessary. If it detects that an adult is taking the seat, the airbag is automatically activated, reducing the risk of incorrect operation.)
- Ambient lighting with 64 light colors
- AMG floor mats
- AMG sports pedal assembly made of brushed stainless steel with rubber studs
- Left and right exterior mirrors are heated and electrically adjustable
- Brake assist, active
- black roof rails
- Double cup holder at the front
- EASY-PACK tailgate (with electric operation for opening and closing)
- Electronic Stability Program (ESP) (including Anti-lock Braking System (ABS) and Traction Control System (ASR))
- Transmission: 9-speed automatic, 9G-TRONIC
- rear window wiper
- Interior headliner fabric crystal grey
- ISOFIX child seat attachment with top tether in the rear
- KEYLESS-GO start function
- THERMATIC automatic climate control with 2 climate zones (control via the central display or the climate control unit in the center console; sensor system for detecting, for example, indoor/outdoor temperature, sunlight, humidity, and dew point; automatic recirculation (only in conjunction with navigation system); ventilation system consisting of: 3 center vents and 2 side vents; fine dust activated carbon filter for filtering dust, soot, and pollen; dew point sensor; residual heat function for efficient use of engine waste heat)
- LED High Performance headlights (The elements of the LED High Performance headlights: - Torch and trifunctional light guide for daytime running lights, position lights and turn signals - Multi-chamber reflector system with 4 individual reflectors each) for low beam and high beam. The elements of the rear lights in LED technology: - All light functions in full LED technology - Tail light - Brake light and parking light - Rear fog light (only on the left side) - Turn signals - Reversing light - 3rd brake light)
- Mercedes-Benz Emergency Call System (can provide a crucial time advantage in an emergency. A communication module with its own SIM card automatically triggers an emergency call upon detection of an accident, which can shorten the time until emergency services arrive. The emergency call can also be triggered manually to organize assistance.)
- Otto particulate filter



- Package: Storage (storage compartment with net on the left in the load compartment - double cup holder in the center console for 2 x 750 ml - elastic tension strap on the right in the load compartment - folding box under the load floor - 1 additional bag hook on the right in the load compartment - recess including storage tray on the right in the load compartment - map pockets on the backs of the front seats - reversible mat in the boot floor)
- Package: Parking (12 ultrasonic sensors - reversing camera - Active Parking Assist with PARKTRONIC: detects free parking spaces, assisted parking, visual and acoustic warning, display of camera and ultrasonic data in the media display - Cross traffic warning: can provide visual and acoustic warnings when reversing out of a parking space and, if necessary, automatically initiate emergency braking - Reverse maneuvering brake: can trigger a braking process - Drive-away assist)
- Radio: MBUX (fully digital instrument display with 26 cm (10.25") color LCD display and a resolution of 1440 x 540 pixels - Bluetooth telephony / audio - WLAN hotspot)
- Radio accessory: Communication module (LTE) for using Mercedes me connect services (The communication module with a vehicle-integrated, LTE-enabled SIM card offers you added comfort and safety. It continuously connects you to your vehicle – and the vehicle to infrastructure such as the Mercedes-Benz server or the internet. This allows you to use services such as Mercedes me connect Live Traffic Information.)
- Wheels: 45.7 cm (18") AMG light-alloy wheels in 5-spoke design (aerodynamically optimized, painted in tremolite grey and polished with front axle 225/45 R 18 on 7.5 J x 18 H ET 40, rear axle 245/40 R 18 on 9 J x 18 H ET 58)
- Windscreen wipers with rain sensor
- Seats: Rear seat backrests foldable
- Lane Keeping Assist, active
- High-visibility vest for drivers
- Central locking with remote control
- Package: Interior lighting package (Illuminated glove compartment - Lighting for wireless mobile interface or mobile phone storage - Lighting for the storage compartment in the center console or the double cupholders - Lighting for the storage compartment under the center console armrest - Two vanity lights in front - Two reading lights in the overhead control unit - Two reading lights in the interior mirror in conjunction with mirror parking - Two reading lights and interior light function in the rear grab handles - Lighting for the trunk or cargo area)
- Upholstery: ARTICO leatherette/MICROCUT microfiber
- Radio: Extended MBUX functions (personalization (profiles) and prediction functions - MBUX voice assistant "LINGUATRONIC" with natural language understanding - activation via Hey Mercedes - learning function of the MBUX voice assistant through connection with a cloud-based online dictionary, Mercedes me connect service free of charge for 3 years from activation - Wi-Fi hotspot - internet radio)
- Radio accessories: Digital radio (DAB)
- Radio accessories: Central display (High-resolution central display, slightly inclined towards the driver with a 24 cm (9.5") screen diagonal, with MBUX multimedia system - touch display with LCD technology)
- Tire pressure monitoring system (TPMS)
- Remote Services Plus (Communication module - Mercedes me services: remote vehicle status query, programming of auxiliary heating/ventilation, remote door locking and unlocking, sunroof/windows with remote locking and opening including ventilation remote control, personalization, vehicle location, vehicle tracking, geographic vehicle monitoring, parking service monitoring, finder function (Remote Vehicle Finder), notification when exceeding the driving speed, Send2Car function)
- Cruise control
- Electronic immobilizer
- Decorative elements, metal structure



Extra equipment

- Ambient lighting with 64 light colors (with directly illuminated light lines.)
- Charging cable for wallbox and public charging station, 5m, smooth, 11kW
- Package: Advanced Comfort Package
- Package: Advanced Infotainment Package
- Package: Advanced Lighting Package
- Package: Driving Assistance Package Plus (Active Distance Assist DISTRONIC, Active Speed Limit Assist, Extended Automatic Restart on Highways, Route-Based Speed Adaptation with Traffic Jam End Function, Active Traffic Jam Assist, Active Steering Assist, Active Lane Change Assist, Active Emergency Stop Assist, Emergency Lane Function, Active Brake Assist with Vehicle, Bicycle and Pedestrian Detection; Intersection Function, Turn Function, Traffic Jam End Emergency Braking Function, Evasive Steering Assist, Active Lane Keeping Assist, Active Blind Spot Assist, PRE-SAFE Impulse Side)
- Package: Mirror package (both exterior mirrors electrically folding (button in the driver's door control panel) - interior mirror and exterior mirror on the driver's side automatically dimming continuously - ambient lighting of the exterior mirror to illuminate the entry area with projection of the Mercedes-Benz logo)
- Package: Public Charging (charging cable for wallbox and public charging stations, 5m, smooth (charging the vehicle battery at the wallbox or at public charging stations with up to 11 kW (Type 2, 3-phase, 20 A)) - Remote and Charging Services Plus)
- Paint finish: Metallic
- Seats: Sports seats
- URBAN GUARD Vehicle Protection Plus (Anti-theft alarm system - Towing protection with visual and audible warning in case of detected change in position - Alarm horn - Interior monitoring (triggers upon movement inside the vehicle) - Assistance with vehicle theft (theft assistance), free of charge for 3 years from activation - Emergency key deactivation, free of charge for 3 years from activation - Collision detection, free of charge for 3 years from activation - URBAN GUARD label on the front side windows)
- Black fabric headliner
- Decorative elements in diamond pattern, silver-grey
- ENERGIZING AIR CONTROL (Air quality sensor and one fine dust sensor each for indoor and outdoor use - Fine dust filtration with 2 filters - Activated carbon-based indoor air filter with filter layers against fine dust (PM2.5) and nitrogen oxides (NOx) or sulfur dioxides (SO2) as well as pollen - Automatic recirculation or fresh air switching depending on the measured air quality, taking into account the overall climate comfort control system - Air quality menu in the MBUX multimedia system to illustrate the measured values)
- Heat and noise insulating acoustic glass (for windshield and front doors)
- Heat-insulating dark tinted glass
- Package: High-End Infotainment Package (MBUX Navigation Premium (hard drive navigation, pre-installation for Live Traffic Information), Traffic Sign Assist, Smartphone Integration (connects the mobile phone wirelessly to the multimedia system via Apple CarPlay and Android Auto), Wireless charging system for mobile devices in the front, Driver display - 31.2 cm (12.3") color LCD display, Central display - 30.2 cm (11.9") touch display, MBUX Augmented Reality for navigation.)
- Package: Night (300e Estate with AMG Line Exterior) (Radiator grille: Diamond grille with silver pins and high-gloss black louvre (18") AMG light-alloy wheels in 5-spoke design, aerodynamically optimized, black painted, high-sheen finish, with front axle 225/45 R18 on 7.5Jx18 ET40, rear axle 255/40 R18 on 9Jx18 ET58 AMG front apron with high-gloss black wing trim. Rear bumper with high-gloss black wing trim. Belt trim strip and window surrounds in high-gloss black. Exterior mirror housings in high-gloss black. Heat-insulating dark-tinted rear glass (from the B-pillar). Roof rails in black.)
- Package: Trunk Comfort
- Paint finish: MANUFAKTUR metallic
- Radio accessories: Advanced sound system (with 9 speakers and 225 watts system power)

Brief expert findings

Documents submitted	At the time of the inspection, the vehicle registration certificate Part 2 (title) was available, but the vehicle registration certificate Part 1 (document) was not. (Copy)
VIN comparison	The vehicle identification number (VIN) was read from the vehicle and its conformity with the submitted documents was confirmed by the undersigned during the inspection.
Inspection	The inspection conditions were sufficient for the assessment of the vehicle. No lifting equipment or pit was available for inspecting the vehicle. Therefore, inspection of the vehicle's underside was only possible to a limited extent.
Test drive	No test drive/shunting maneuver was carried out during the inspection of the vehicle.
Engine function test	An engine test run was performed.



Value reducing factors

No.	Component group	Description
1	Misc.	Inspection / maintenance - No evidence - No deduction
2	Misc.	Main inspection - No evidence - No deduction
3	Screen cleaning	Wiper blades - rear - Broken / torn - Replace
4	Trim / covers	Boot lid - interior trim - Scratch(es) - Loss in value
5	Boot lid / rear door	Boot lid - dent(s) - Smooth repair work
6	Side panel - rear right side	Sill - Dent / paintcoat damage - Smart repair
7	Door - front left side	Door - Dent / paintcoat damage - Smart repair
8	Front axle	Axles / undercarriage (wegen der beschädigten Felgen) - Specify findings - Measure
9	Boot lid / rear door	Boot lid (Spoiler) - Scratch(es) - Paint
10	Wheel / tyres	Alloy rim - rear left side - Scratch(es) - Loss in value
11	Door - rear right side	Door - Scratch(es) - Paint
12	Door - rear left side	Door - Deformed - Repair and paint
13	Bonnet	Bonnet - Dent / paintcoat damage - Repair and paint
14	Wheel / tyres	Alloy rim - front right side - Scratched - Replace
15	Wheel / tyres	Alloy rim - front left side - Scratched - Replace
16	Wheel / tyres	Alloy rim - rear right side - Scratched - Replace
17	Side panel - rear left side	Side panel - Dent / paintcoat damage - Repair and paint
18	Front bumper	Front bumper (Zusätzlich Zierleiste re. Unten gebrochen) - Scratch(es) - Paint
19	Roof	Roof (+ Relling li. erneuern) - Scratch(es) - Paint

Wear and tear

No.	Component group	Description
1	Vehicle glazing	Windscreen - Stone chips - No deduction
2	Door - front right side	Door edge - Scratch(es) - No deduction
3	Rear bumper	Rear bumper (Ladekante) - Scratch(es) - No deduction

The vehicle shows signs of wear and tear commensurate with its age and use.

Accident damages

No.	Accident
1	Rear, Side right

Order/Scope of Order

An order was placed to prepare a sales report for the described vehicle. This report includes the following:

- Description of key vehicle information
- Documentation of equipment features
(*Delivery by third-party service providers*)
- Documentation of damage, defects, missing parts
- Documentation of prior damage, unrepaired prior damage, repainting
- A brief visual or functional inspection of the equipment details, if possible.
(*Functional testing of driver assistance systems is not included in the scope of services!*)
- a photographic documentation of the vehicle



Basis for the order

This product is based on the guidelines for vehicle returns and valuations published by Alphabet Fleet GmbH. The expert makes the specific findings in each individual case objectively, within the framework of the prescribed standards, based on their own expertise.

The vehicle inspection takes place in a fully assembled, unassembled state.

Damage or defects that can only be detected during disassembly/diagnostic work or through further investigation remain within the realm of prognostic risk. An increased risk exists due to concealed defects caused by fraudulent misrepresentation and which were not identifiable by the expert.

Damage or defects resulting from normal use or wear and tear of the vehicle will be accepted in accordance with the applicable standard.

There was no explicit identification or monetary consideration of the expected features within the product.

Features which, in their nature and extent, slightly exceed normal use but do not constitute unacceptable damage, will be documented and indicated as signs of wear, if applicable.

Damage or defects that, according to the applicable standard, can no longer be attributed to normal use or wear and tear are listed under "Value Reducing Factors" in the product description.

Depending on the product specification, a monetary ID can be provided. If this takes place, the costs can be 100% or pro rata depending on the vehicle's age and mileage.

Previous damages

Non-repaired previous damages were found at the vehicle. The necessary repair costs are listed in the expert report or if necessary, are listed in detail in a separately enclosed repair cost calculation.

Comments

Die Wartungshistorie ist nicht vorhanden und kann somit nicht auf Vollständigkeit geprüft werden.

Die beigefügte Reparaturkostenkalkulation wurde nach bestem Wissen und Gewissen unter eingeschränkter Besichtigungsbedingung im demontagefreien Zustand erstellt. Es können aufgrund verdeckter Beschädigung erhebliche Mehrkosten und somit Abweichung der für den Unfall ausgewiesenen Reparaturkosten nicht ausgeschlossen werden.



Figure 1: Diagonal front (left)



Figure 2: Diagonal front (right)



Figure 3: Diagonal rear (left)



Figure 4: Diagonal rear (right)



Figure 5: Interior - front



Figure 6: Interior - rear



Figure 7: Instrument cluster



Figure 8: Instrument panel



Figure 9: Interior 360° view



Figure 10: Cargo area

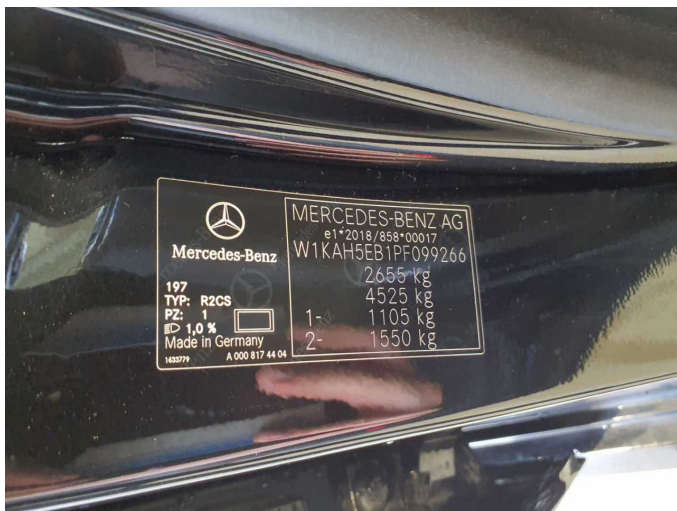


Figure 11: VIN



Figure 12: Mounted tyres



Figure 13: Documents

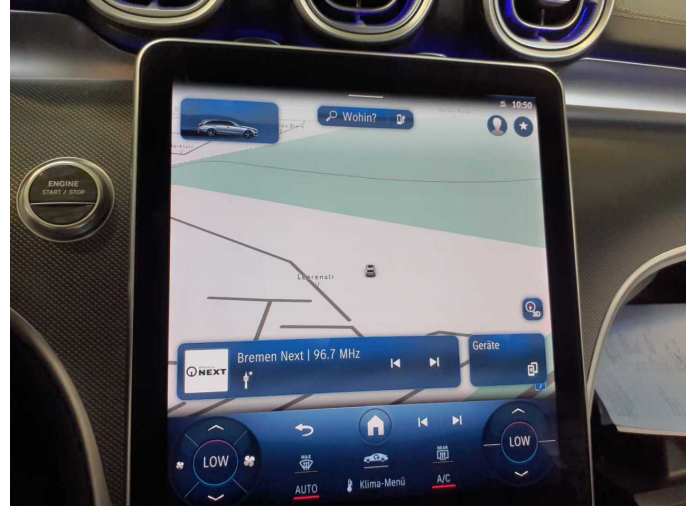


Figure 14: Navigation

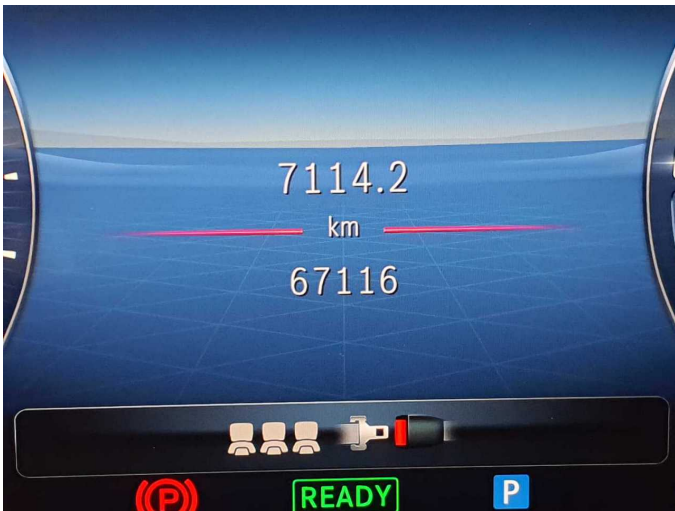


Figure 15: Misc.

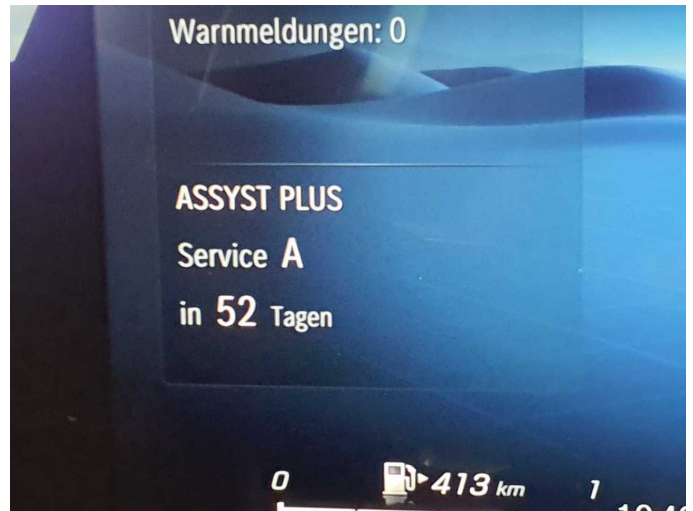


Figure 16: Misc.



Figure 17: Misc.



Figure 18: Misc.



Figure 19: Misc.



Figure 20: Misc.



Figure 21: Misc.

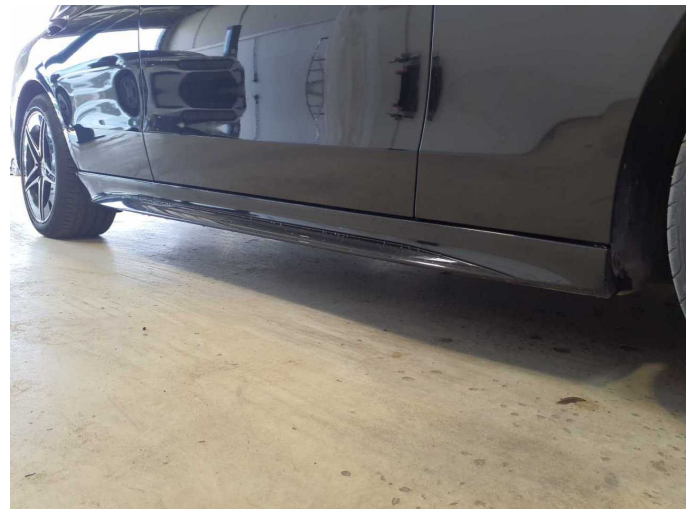


Figure 22: Misc.



Figure 23: Misc.



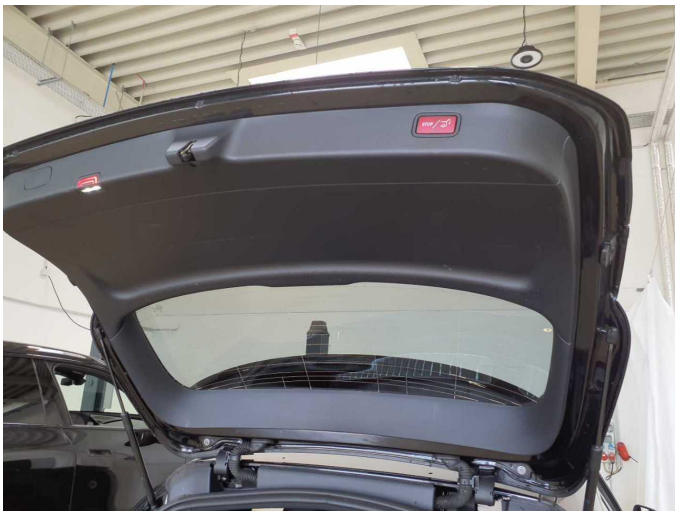
Damage 3: Screen cleaning: Wiper blades - rear - Broken / torn - Replace



Damage 3: Screen cleaning: Wiper blades - rear - Broken / torn - Replace



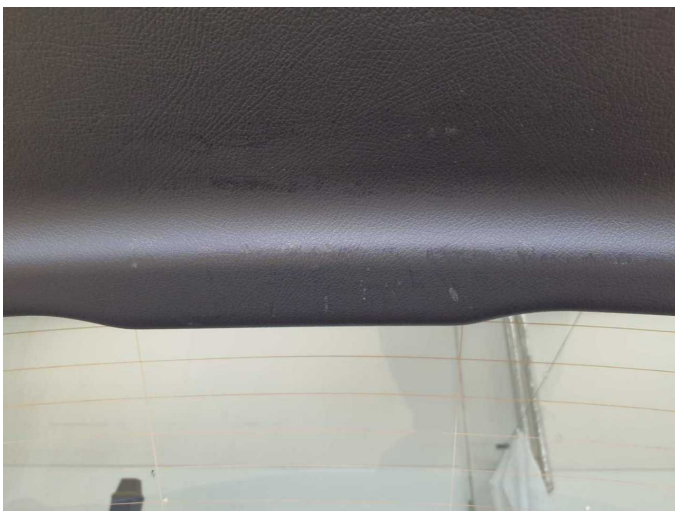
Damage 3: Screen cleaning: Wiper blades - rear - Broken / torn - Replace



Damage 4: Trim / covers: Boot lid - interior trim - Scratch(es) - Loss in value



Damage 4: Trim / covers: Boot lid - interior trim - Scratch(es) - Loss in value



Damage 4: Trim / covers: Boot lid - interior trim - Scratch(es) - Loss in value



Damage 4: Trim / covers: Boot lid - interior trim - Scratch(es) - Loss in value



Damage 5: Boot lid / rear door: Boot lid - dent(s) - Smooth repair work



Damage 5: Boot lid / rear door: Boot lid - dent(s) - Smooth repair work



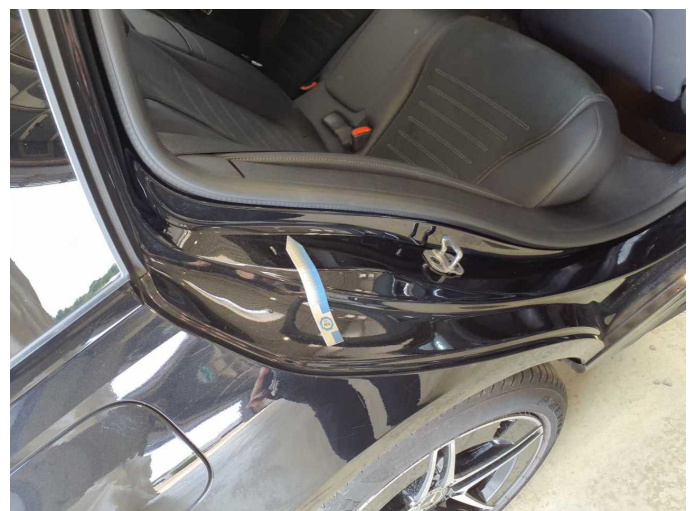
Damage 5: Boot lid / rear door: Boot lid - dent(s) - Smooth repair work



Damage 5: Boot lid / rear door: Boot lid - dent(s) - Smooth repair work



Damage 5: Boot lid / rear door: Boot lid - dent(s) - Smooth repair work



Damage 6: Side panel - rear right side: Sill - Dent / paintcoat damage - Smart repair



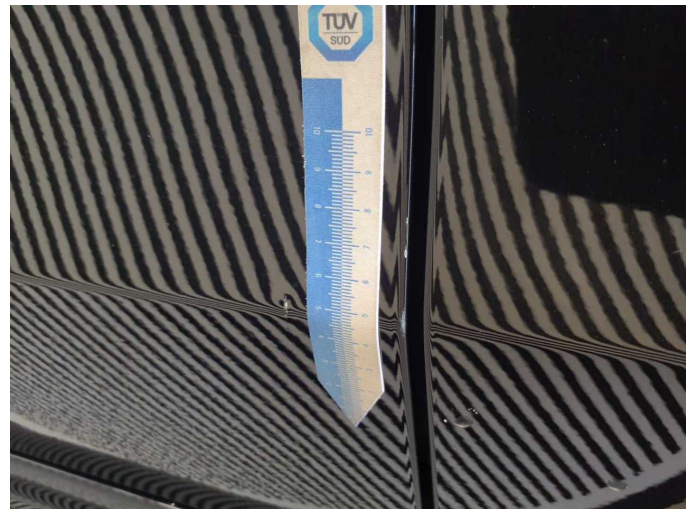
Damage 6: Side panel - rear right side: Sill - Dent / paintcoat damage - Smart repair



Damage 6: Side panel - rear right side: Sill - Dent / paintcoat damage - Smart repair



Damage 7: Door - front left side: Door - Dent / paintcoat damage - Smart repair



Damage 7: Door - front left side: Door - Dent / paintcoat damage - Smart repair



Damage 7: Door - front left side: Door - Dent / paintcoat damage - Smart repair



Damage 7: Door - front left side: Door - Dent / paintcoat damage - Smart repair



Damage 9: Boot lid / rear door: Boot lid (Spoiler) - Scratch(es) - Paint



Damage 10: Wheel / tyres: Alloy rim - rear left side - Scratch(es) - Loss in value



Damage 10: Wheel / tyres: Alloy rim - rear left side - Scratch(es) - Loss in value



Damage 10: Wheel / tyres: Alloy rim - rear left side - Scratch(es) - Loss in value



Damage 10: Wheel / tyres: Alloy rim - rear left side - Scratch(es) - Loss in value



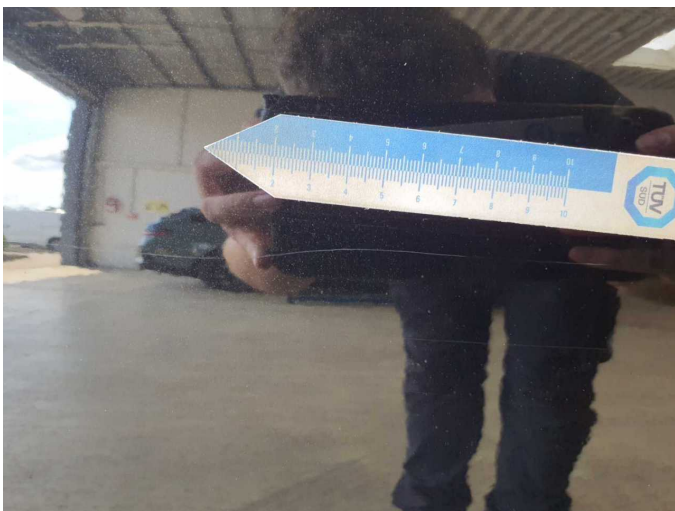
Damage 10: Wheel / tyres: Alloy rim - rear left side - Scratch(es) - Loss in value



Damage 11: Door - rear right side: Door - Scratch(es) - Paint



Damage 11: Door - rear right side: Door - Scratch(es) - Paint



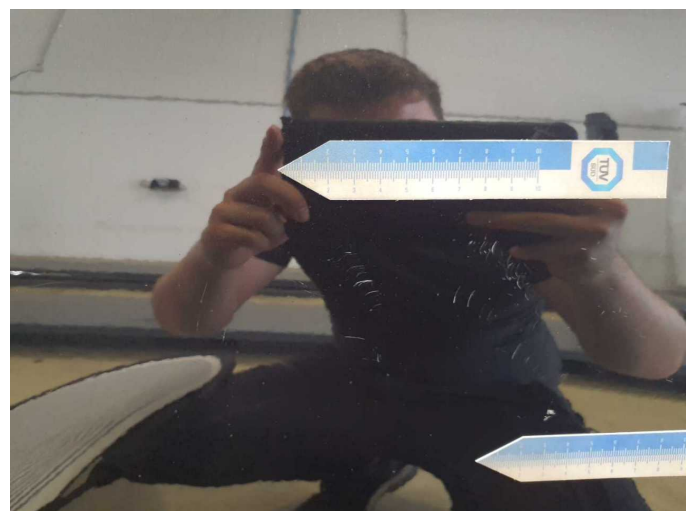
Damage 11: Door - rear right side: Door - Scratch(es) - Paint



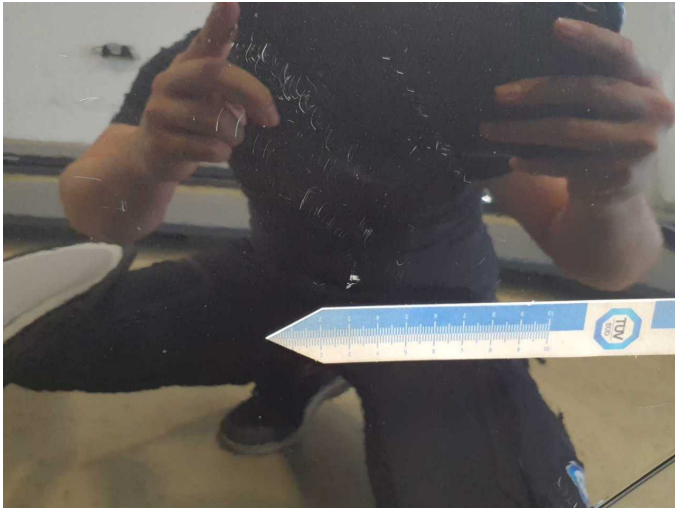
Damage 11: Door - rear right side: Door - Scratch(es) - Paint



Damage 12: Door - rear left side: Door - Deformed - Repair and paint



Damage 12: Door - rear left side: Door - Deformed - Repair and paint



Damage 12: Door - rear left side: Door - Deformed - Repair and paint



Damage 12: Door - rear left side: Door - Deformed - Repair and paint



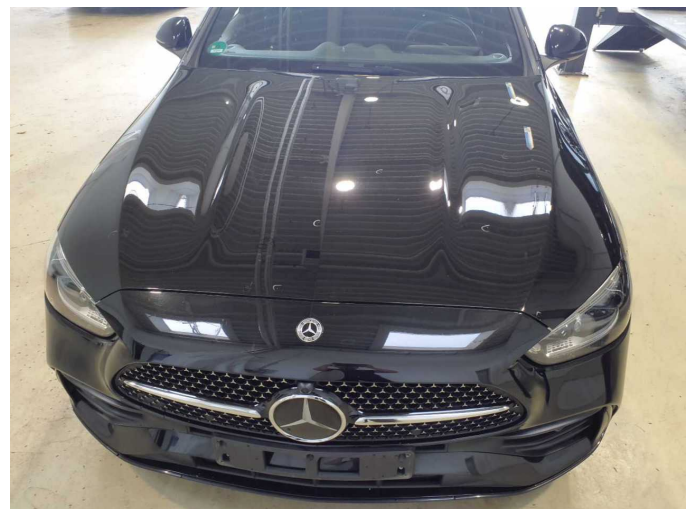
Damage 12: Door - rear left side: Door - Deformed - Repair and paint



Damage 12: Door - rear left side: Door - Deformed - Repair and paint



Damage 12: Door - rear left side: Door - Deformed - Repair and paint



Damage 13: Bonnet: Bonnet - Dent / paintcoat damage - Repair and paint



Damage 13: Bonnet: Bonnet - Dent / paintcoat damage - Repair and paint



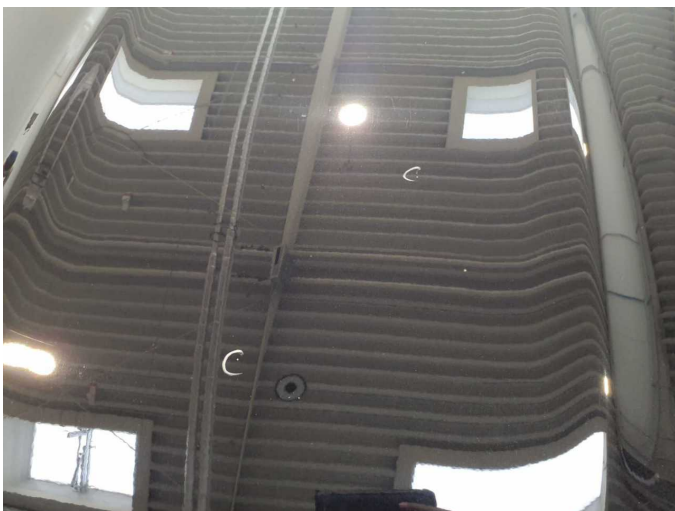
Damage 13: Bonnet: Bonnet - Dent / paintcoat damage - Repair and paint



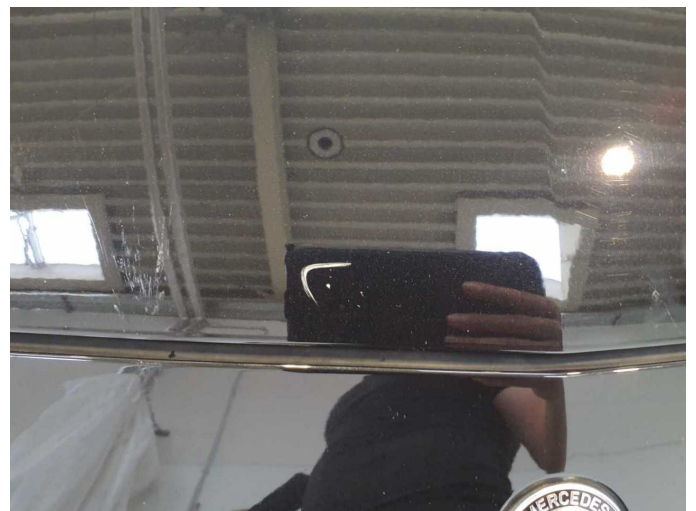
Damage 13: Bonnet: Bonnet - Dent / paintcoat damage - Repair and paint



Damage 13: Bonnet: Bonnet - Dent / paintcoat damage - Repair and paint



Damage 13: Bonnet: Bonnet - Dent / paintcoat damage - Repair and paint



Damage 13: Bonnet: Bonnet - Dent / paintcoat damage - Repair and paint



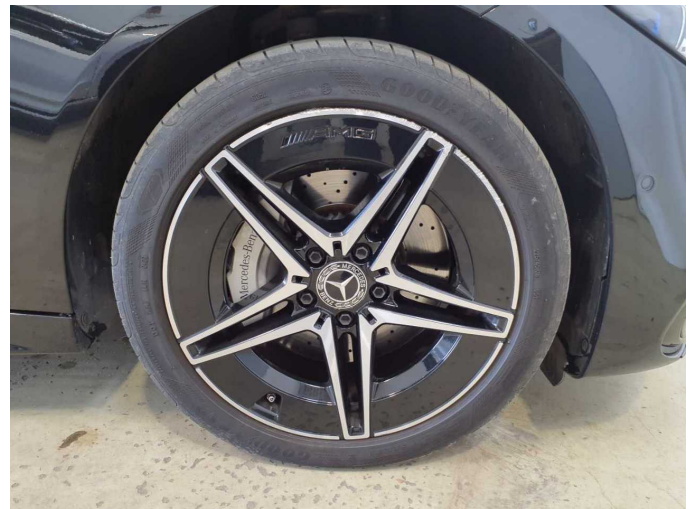
Damage 13: Bonnet: Bonnet - Dent / paintcoat damage - Repair and paint



Damage 13: Bonnet: Bonnet - Dent / paintcoat damage - Repair and paint



Damage 13: Bonnet: Bonnet - Dent / paintcoat damage - Repair and paint



Damage 14: Wheel / tyres: Alloy rim - front right side - Scratched - Replace



Damage 14: Wheel / tyres: Alloy rim - front right side - Scratched - Replace



Damage 14: Wheel / tyres: Alloy rim - front right side - Scratched - Replace



Damage 15: Wheel / tyres: Alloy rim - front left side - Scratched - Replace



Damage 15: Wheel / tyres: Alloy rim - front left side - Scratched - Replace



Damage 15: Wheel / tyres: Alloy rim - front left side - Scratched - Replace



Damage 15: Wheel / tyres: Alloy rim - front left side - Scratched - Replace



Damage 16: Wheel / tyres: Alloy rim - rear right side - Scratched - Replace



Damage 16: Wheel / tyres: Alloy rim - rear right side - Scratched - Replace



Damage 16: Wheel / tyres: Alloy rim - rear right side - Scratched - Replace



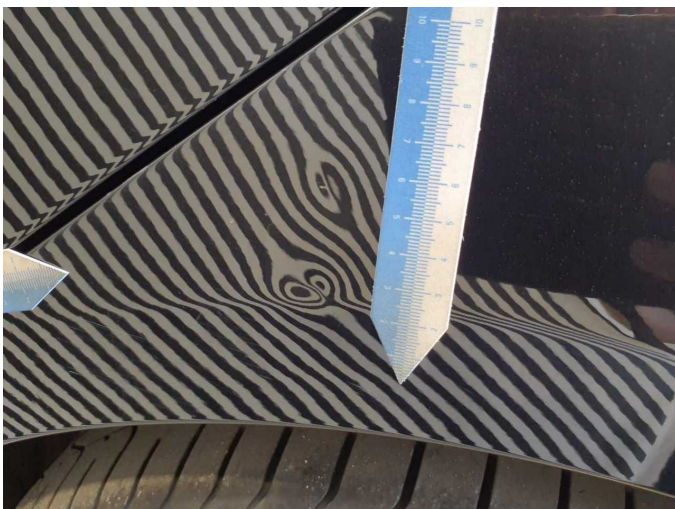
Damage 16: Wheel / tyres: Alloy rim - rear right side - Scratched - Replace



Damage 17: Side panel - rear left side: Side panel - Dent / paintcoat damage - Repair and paint



Damage 17: Side panel - rear left side: Side panel - Dent / paintcoat damage - Repair and paint



Damage 17: Side panel - rear left side: Side panel - Dent / paintcoat damage - Repair and paint



Damage 17: Side panel - rear left side: Side panel - Dent / paintcoat damage - Repair and paint



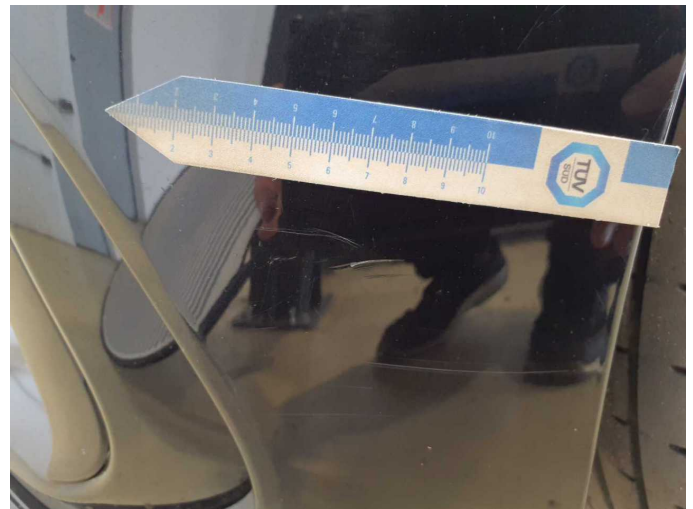
Damage 18: Front bumper: Front bumper (Zusätzlich Zierleiste re. Unten gebrochen) - Scratch(es) - Paint



Damage 18: Front bumper: Front bumper (Zusätzlich Zierleiste re. Unten gebrochen) - Scratch(es) - Paint



Damage 18: Front bumper: Front bumper (Zusätzlich Zierleiste re. Unten gebrochen) - Scratch(es) - Paint



Damage 18: Front bumper: Front bumper (Zusätzlich Zierleiste re. Unten gebrochen) - Scratch(es) - Paint



Damage 18: Front bumper: Front bumper (Zusätzlich Zierleiste re. Unten gebrochen) - Scratch(es) - Paint



Damage 18: Front bumper: Front bumper (Zusätzlich Zierleiste re. Unten gebrochen) - Scratch(es) - Paint



Damage 18: Front bumper: Front bumper (Zusätzlich Zierleiste re. Unten gebrochen) - Scratch(es) - Paint



Damage 19: Roof: Roof (+ Relling li. erneuern) - Scratch(es) - Paint



Damage 19: Roof: Roof (+ Relling li. erneuern) - Scratch(es) - Paint



Damage 19: Roof: Roof (+ Relling li. erneuern) - Scratch(es) - Paint



Damage 19: Roof: Roof (+ Relling li. erneuern) - Scratch(es) - Paint



Accident 1: Rear, Side right



Accident 1: Rear, Side right



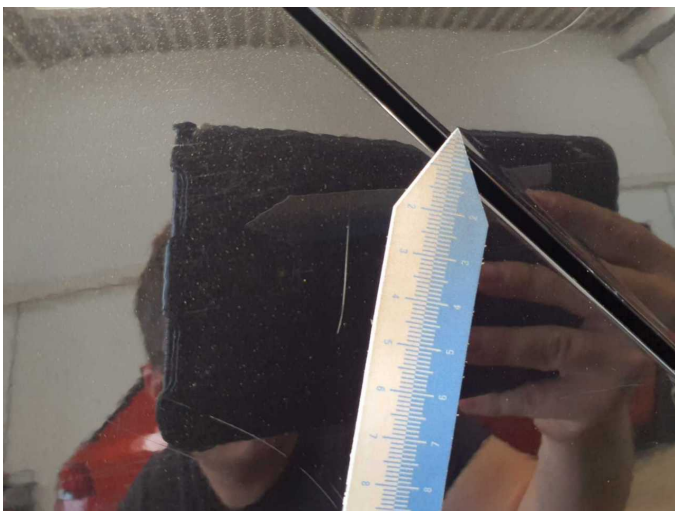
Accident 1: Rear, Side right



Accident 1: Rear, Side right



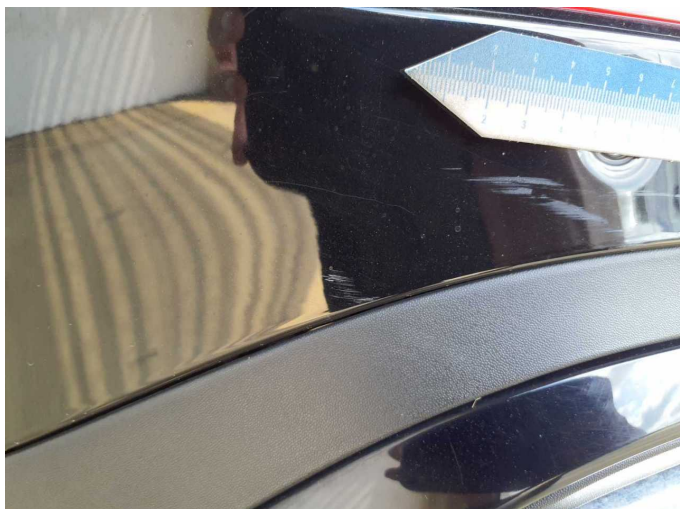
Accident 1: Rear, Side right



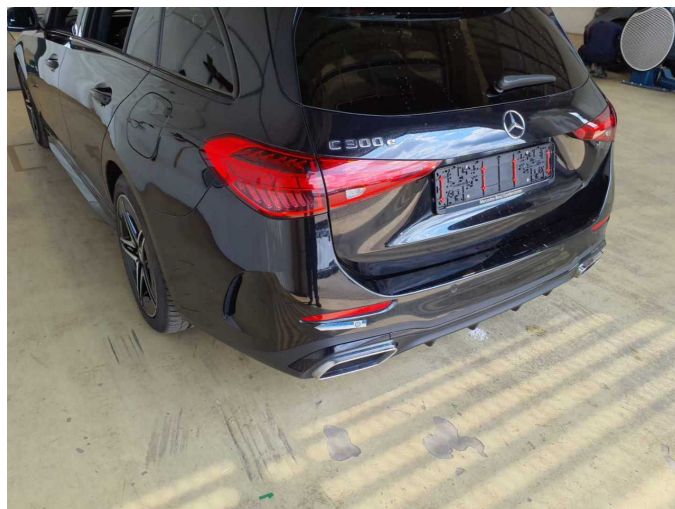
Accident 1: Rear, Side right



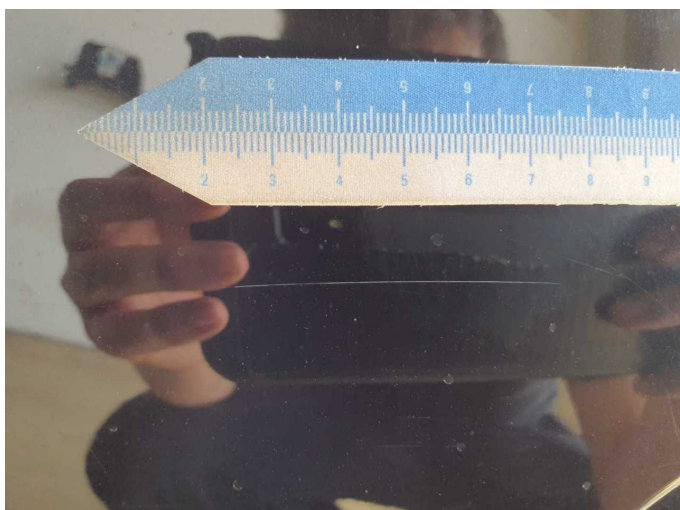
Accident 1: Rear, Side right



Accident 1: Rear, Side right



Accident 1: Rear, Side right



Accident 1: Rear, Side right