

## Expertise

Protocol number: 46045246  
Order No. / Reference: 26457381  
Inspection date: 19 Jun 2026

Manufacturer: Ford

Model: Focus Turnier 1.5 EcoBlue Start-Stopp-System Aut. ST-LINE X

VIN: WF0PXXGCHPPD75235



### Vehicle details

#### Manufacturer / Type / Model / Equipment

Ford Focus Turnier 1.5 EcoBlue Start-Stopp-System Aut. ST-LINE X

**Vehicle Identification number** WF0PXXGCHPPD75235

**Mileage (Read)** 148,084 km

**First registration** 21 Apr 2023

**Number of holders** 1

**Next periodical technical inspection** 04/2026

(Report not on hand)

**Power / Engine displacement** 85 kw / 1,499 ccm

**Fuel type / Cylinder** Diesel / 4

**Gearbox / Number of gears** Automatic / 8

**Type of drive** Front drive

**Type of vehicle** Station wagon

**Colour / colour code** Frozen White

**Doors / Seats** 5 / 5

**Upholstery type** Cloth

**Colour of upholstery** Anthracite

**Re-import** no

**Vehicle with smoke odor** no

**readiness to drive** Roadworthy



## Vehicle details

<b>Maintenance booklet / proof</b>	digital evidence / incomplete	<b>Next maintenance in</b>	0 %
<b>Last service on / at</b>	09/2025 at 118,711 km		
<b>Key is / should be</b>	2 / 2	<b>FZG documents</b>	ZB#2 (B) was available (copy), ZB#1 (S) was not available.
		<b>Letter No.</b>	GT900260
<b>Previous damage / Accident</b>	None detectable	<b>Repainting</b>	None detectable
<b>Inspection conditions</b>	sufficient	<b>Lifting equipment / pit</b>	yes
<b>Test drive</b>	Not performed	<b>Engine function test</b>	Performed
<b>readiness to drive</b>	Roadworthy		
<b>Manufacturer key number/ type code number</b>	8566 / BYE 00005		
<b>Emission standard</b>	EURO6;WLTP;AP;PI/CI; M, N1 I	<b>fine dust sticker</b>	
<b>Permitted total weight</b>	2,035 kg	<b>Empty weight</b>	

## Tyres

### Mounted tyres

#	Tyre size	Type of tyre	Manufacturer	Tread depth
1)	215/50 R17 95H	Winter tyres on Light alloy	Continental	5mm / 5mm
2)	215/50 R17 95H	Winter tyres on Light alloy	Continental	5mm / 5mm

### Replacement

Typ	Tyre size	Type of tyre	Manufacturer	Tread depth
Tirefit		Expiration date 04/2027		

**Legend: Tread depth information for the left tire is listed first, for the right tire it is listed second on the axle in the direction of travel.**



## Equipment

### Standard equipment

- Airbag: Passenger airbag deactivation
- Anti-lock braking system (ABS) with electronic brake force distribution (EBD)
- Attachment points behind the second row of seats for mounting the safety partition net
- Body styling kit
- Roof rails, black
- Diesel particulate filter (DPF)
- Tachometer
- Electronic Safety and Stability Program (ESP)
- Chassis: Sport-tuned
- Electric parking brake with auto-hold function
- FordPass Connect including live traffic information
- Luggage compartment lighting
- Cruise control
- Illuminated glove compartment
- rear window wiper
- Interior mirror, automatically dimming
- Isofix bracket
- Knee pads on the center console
- Paint finish: Solid
- LED headlights
- Steering wheel: Paddle shifters on the steering wheel
- Make-up mirrors in driver and passenger sun visors
- Center console "Premium" front
- Navigation: Ford SYNC 4 including Ford navigation system with AppLink, 13.2" touchscreen and DAB/DAB+
- Upholstery: Cloth
- Pre-Collision Assist
- Tire Pressure Monitoring System (TMPS)
- Windscreen wipers with rain sensor (sensitivity adjustable)
- Headlight assistant with day/night sensor
- Selective driving mode switch
- Electromechanical speed-dependent power steering
- Seats: Driver's seat height adjustable
- Seats: Front sports seats with enhanced lateral support
- 12-volt power outlet in the luggage compartment
- Carpet floor mats front and rear, velour
- 2 USB ports in the center console, rear
- Lashing eyes in the luggage compartment
- Electronic immobilizer
- Central locking with remote control and remote luggage compartment release
- Ambient lighting, front
- Exterior mirrors painted in body color, electrically adjustable, heated and foldable
- Tires: 7 J x 17 alloy wheels (4) with 215/50 R 17 tires
- Hill start assist
- Black woven fabric headliner
- Roof spoiler painted in car color
- Digital instrument panel 12.3" (31.2 cm screen diagonal)
- Electronic Shifter
- Lane keeping assist including lane keeping assist
- Electric windows front and rear
- FordKeyFree system including Ford Power start function
- Luggage compartment cover
- Speed limiter
- Transmission: 8-speed automatic transmission
- Back window, heater
- Interior lighting with LED technology
- Intelligent security system
- Air conditioning with automatic temperature control
- Headrests: 2 front and 3 rear, height adjustable
- LED taillights
- Steering wheel: ST-Line design
- Adjustable steering column
- Armrest - centre, rear
- MyKey key system (individually programmable second key)
- Emergency call assistant
- Front and rear parking pilot system
- Post-Collision Assist
- Tire repair kit
- Rear view camera
- Headlight low beam
- Side windows from the 2nd row of seats and rear window, dark tinted.
- Seats: Passenger seat height-adjustable, manually
- Seats: Rear seat backrest
- Start-stop system
- Phone accessories: Inductive charging station for mobile devices
- Variable radiator air intake
- Warning system for unfastened seat belts for the 1st and 2nd rows of seats



### Extra equipment

- Swiveling towbar (incl. ESP trailer stabilization)
- Paint finish: Frozen White
- Package: Driver Assistance Package II (Drive Assist Intelligent adaptive cruise control Lane keeping assist Traffic jam assist with Stop&Go Traffic sign recognition Wrong-way driver warning radio Evasive steering assist Distance display and distance warning Driver drowsiness detection High beam assist (in conjunction with adaptive LED matrix headlights with glare-free high beam assist) Blind spot assist with cross traffic alert including emergency braking function (when reversing out of parking spaces) and trailer recognition Rear view camera with split view Electrically folding exterior mirrors with surround view)
- Radio: B&O Sound System (675 Watt premium sound system with 10 speakers, including subwoofer - based on the renowned sound and design expertise of Bang & Olufsen)
- Reversible luggage compartment mat
- LED matrix headlights, adaptive (LED matrix low beam - LED matrix high beam - LED matrix cornering light, dynamic - LED daytime running lights incl. integrated LED turn signals at the front - LED cornering light, static, incl. maneuvering and bad weather light - Automatic headlight range control - High beam assist, glare-free)
- Package: ST-Line styling package (red painted brake calipers - large roof spoiler painted in body color - pedals with aluminum covers - front door sill trims, ST-Line design)
- Package: Winter (heated windscreen - heated steering wheel - individually and variably heated front seats)
- Safety partition net for luggage compartment
- Cigarette lighter and ashtray

### Retrofitted equipment

- Package: Family Package III AGLAC

### Brief expert findings

Documents submitted	At the time of the inspection, the vehicle registration certificate Part 2 (title) was available, but the vehicle registration certificate Part 1 (document) was not. (Copy)
VIN comparison	The vehicle identification number (VIN) was read from the vehicle and its conformity with the submitted documents was confirmed by the undersigned during the inspection.
Inspection	The inspection conditions were sufficient for the assessment of the vehicle. Lifting equipment and/or a pit were available for examining the vehicle.
Test drive	No test drive/shunting maneuver was carried out during the inspection of the vehicle.
Engine function test	An engine test run was performed.
readiness to drive	The vehicle was roadworthy at the time of inspection.

### Value reducing factors

No.	Component group	Description
1	Door - rear left side	Door (Innen) - dent(s) - Smart repair
2	Door - rear right side	Door - dent(s) - Smart repair
3	Braking system	Brake discs and pads - rear (Freibremsen) - Corrosion
4	Roof	Roof - Stone chips - Smart repair
5	Misc.	Main inspection - Due - Perform
6	Wheel / tyres	Alloy rim - front left side - Scratch(es) - Loss in value
7	Misc.	Inspection / maintenance (Kein Nachweis) - Due - Perform



## Wear and tear

No.	Component group	Description
1	Vehicle glazing	Windscreen - Stone chips - No deduction
2	Vehicle glazing	Windscreen - Stone chips - No deduction
3	Body	Body - Scratch(es) - No deduction
4	Front bumper	Front bumper - Stone chips - No deduction
5	Wheel / tyres	Tyres - complete set (WR statt SR) - Differs from the original configuration - No deduction

The vehicle shows signs of wear and tear commensurate with its age and use.

## Order/Scope of Order

An order was placed to prepare a sales report for the described vehicle. This report includes the following:

- Description of key vehicle information
- Documentation of equipment features  
(*Delivery by third-party service providers*)
- Documentation of damage, defects, missing parts
- Documentation of prior damage, unrepaired prior damage, repainting
- A brief visual or functional inspection of the equipment details, if possible.  
(*Functional testing of driver assistance systems is not included in the scope of services!*)
- a photographic documentation of the vehicle

## Basis for the order

This product is based on the guidelines for vehicle returns and valuations published by Alphabet Fleet GmbH. The expert makes the specific findings in each individual case objectively, within the framework of the prescribed standards, based on their own expertise.

The vehicle inspection takes place in a fully assembled, unassembled state.

Damage or defects that can only be detected during disassembly/diagnostic work or through further investigation remain within the realm of prognostic risk. An increased risk exists due to concealed defects caused by fraudulent misrepresentation and which were not identifiable by the expert.

Damage or defects resulting from normal use or wear and tear of the vehicle will be accepted in accordance with the applicable standard.

There was no explicit identification or monetary consideration of the expected features within the product.

Features which, in their nature and extent, slightly exceed normal use but do not constitute unacceptable damage, will be documented and indicated as signs of wear, if applicable.

Damage or defects that, according to the applicable standard, can no longer be attributed to normal use or wear and tear are listed under "Value Reducing Factors" in the product description.

Depending on the product specification, a monetary ID can be provided. If this takes place, the costs can be 100% d or pro rata depending on the vehicle's age and mileage.

## Previous damages

No apparent prior damage that had been repaired could be found on the vehicle.



Figure 1: Diagonal front (left)



Figure 2: Diagonal front (right)



Figure 3: Diagonal rear (left)



Figure 4: Diagonal rear (right)



Figure 5: Interior - front



Figure 6: Interior - rear



Figure 7: Instrument cluster



Figure 8: Instrument panel



Figure 9: Interior 360° view



Figure 10: Cargo area



Figure 11: Cargo area



Figure 12: VIN





Figure 19: Misc.



Figure 20: Misc.



Figure 21: Misc.



Figure 22: Misc.



Figure 23: Misc.



Figure 24: Misc.



Figure 25: Misc.



Figure 26: Misc.



Figure 27: Misc.



Figure 28: Misc.



Figure 29: Misc.



Figure 30: Misc.



Figure 31: Misc.



Damage 1: Door - rear left side: Door (Innen) - dent(s) - Smart repair



Damage 1: Door - rear left side: Door (Innen) - dent(s) - Smart repair



Damage 2: Door - rear right side: Door - dent(s) - Smart repair



Damage 2: Door - rear right side: Door - dent(s) - Smart repair



Damage 3: Braking system: Brake discs and pads - rear (Freibremse) - Corrosion



**Damage 3:** Braking system: Brake discs and pads - rear (Freibremsen) - Corrosion



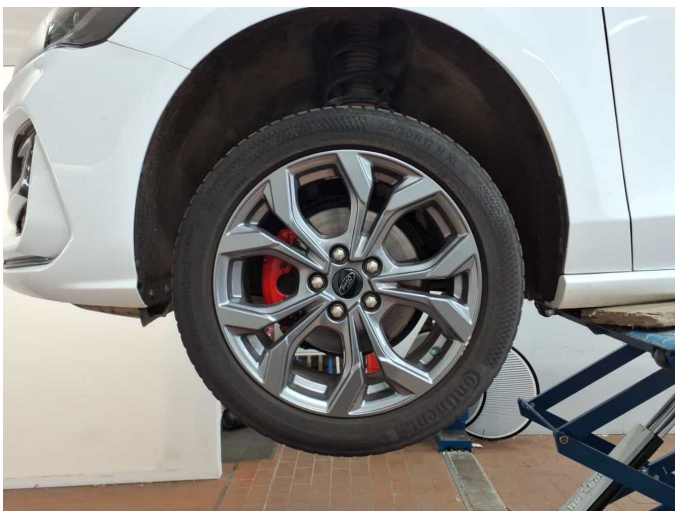
**Damage 3:** Braking system: Brake discs and pads - rear (Freibremsen) - Corrosion



**Damage 4:** Roof: Roof - Stone chips - Smart repair



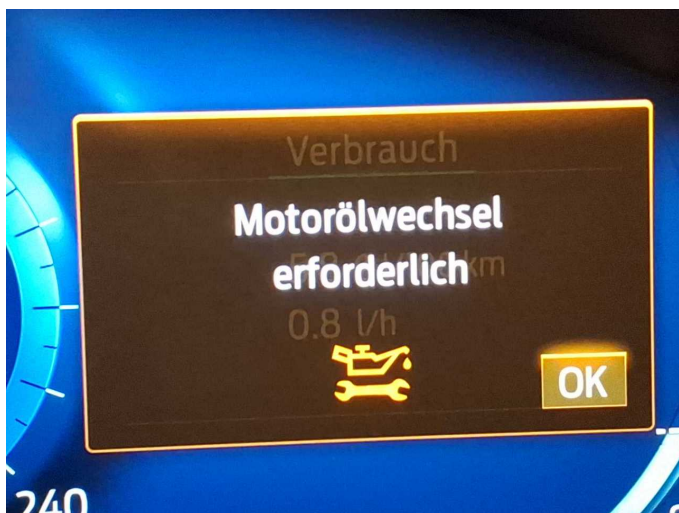
**Damage 4:** Roof: Roof - Stone chips - Smart repair



**Damage 6:** Wheel / tyres: Alloy rim - front left side - Scratch(es) - Loss in value



**Damage 6:** Wheel / tyres: Alloy rim - front left side - Scratch(es) - Loss in value



**Damage 7:** Misc.: Inspection / maintenance (Kein Nachweis) - Due - Perform



# Wartungshistorie

(gemäß Auftraggeber Informationen)

Fahrgestellnummer: WF0PXXGCHPPD75235  
Hersteller / Modell: FORD FORD Focus Turnier 1.5 EcoBlue Start-Stopp-System Aut.  
ST-LINE X

Datum	KM-Stand	Beschreibung
04.09.2025	118.711	Bremse Sonstiges; Bremsklötze hinten; Bremsscheiben + Klötze h; Bremsscheiben hinten; Kraftstofffilter ern; Luftfiltereinsatz ern; Motoröl b. Wartung; Ölfilter ern; Regelwartungsdienst; Systemtest/Eigendiagnose; Wartung Sonstiges
23.01.2025	89.681	Bremsflüssigkeit; Bremsflüssigkeit ern; Motoröl b. Wartung; Ölfilter ern; Regelwartungsdienst; Wartung Sonstiges
27.06.2024	62.207	Kraftstofffilter ern; Luftfiltereinsatz ern; Motoröl b. Wartung; Ölfilter ern; Regelwartungsdienst; Wartung Sonstiges
03.11.2023	30.511	Motoröl b. Wartung; Ölfilter ern; Regelwartungsdienst; Wartung Sonstiges