

Expertise

Protocol number: 45478159
Order No. / Reference: 26358685
Inspection date: 13 May 2026

Manufacturer: Renault

Model: Trafic Blue dCi 150 EDC L2H1 Komfort

VIN: VF1FL000574097828



Vehicle details

Manufacturer / Type / Model / Equipment

Renault Trafic Blue dCi 150 EDC L2H1 Komfort

Vehicle Identification number	VF1FL000574097828
Mileage (Read)	8,273 km
First registration	19 Dec 2024
Number of holders	1
Next periodical technical inspection	12/2027 (Report not on hand)

Power / Engine displacement	110 kw / 1,997 ccm
------------------------------------	--------------------

Fuel type / Cylinder	Diesel / 4
-----------------------------	------------

Gearbox / Number of gears	Automatic / 6
----------------------------------	---------------

Type of drive	Front drive
----------------------	-------------

Type of vehicle	Van
------------------------	-----

Colour / colour code	artis Weiss
-----------------------------	-------------

Doors / Seats	4 / 3
----------------------	-------

Upholstery type	Cloth
------------------------	-------

Colour of upholstery	Black-Anthracite
-----------------------------	------------------



Vehicle details

Maintenance booklet / proof	digital proof / complete	Next maintenance in	31,800 km
Key is / should be	1 / 2	FZG documents	ZB#2 (B) was available (copy), ZB#1 (S) was not available.
		Letter No.	HG708159
Previous damage / Accident	None detectable	Repainting	None detectable
Inspection conditions	sufficient	Lifting equipment / pit	yes
Test drive	Not performed	Engine function test	Performed
Manufacturer key number/ type code number	3333 / BOS 02532		
Emission standard	EURO6;WLTP;EA;PI/CI;M, N1, N2	fine dust sticker	
Permitted total weight	3,070 kg	Empty weight	

Tyres

Mounted tyres

#	Tyre size	Type of tyre	Manufacturer	Tread depth
1)	215/65 R16 107T	All-season tyres on Steel	Goodyear	6mm / 6mm
2)	215/65 R16 107T	All-season tyres on Steel	Goodyear	6mm / 6mm

Additional tyres

#	Tyre size	Type of tyre	Manufacturer	Tread depth
1)	215/65 R16 104H	Summer tyres on Steel	Goodyear	5mm / 5mm
2)	215/65 R16 104H	Summer tyres on Steel	Goodyear	5mm / 5mm

Replacement

Typ	Tyre size	Type of tyre	Manufacturer	Tread depth
Tirefit		Expiration date 12/2029		

Legend: Tread depth information for the left tire is listed first, for the right tire it is listed second on the axle in the direction of travel.



Equipment

Standard equipment

- Storage compartments in the doors
- Airbag: Passenger airbag, deactivatable
- Active emergency braking assistant
- Automatic door locking after starting to drive
- third brake light
- Tachometer
- Rear parking sensors
- electric front windows
- Glove compartment, closed and illuminated
- Keycard Handsfree
- Headrests (3)
- LED headlights with daytime running lights
- light sensor
- Fatigue detection
- Tire pressure monitoring system
- Shift point indicator
- Left side panel sheeted
- Seats: Passenger double seat
- Sun visor with slip pocket on driver and passenger side
- Cruise control with speed limiter
- Traffic sign recognition
- Heat-insulating glass

Extra equipment

- Trailer hitch
- Cargo area: Complete side paneling, made of wood
- Package: Cargo area protection package 2 (wooden floor in the cargo area (12 mm) - LED lighting in the cargo area (transverse strip) - complete side paneling)
- Rear view camera
- Seat covers Super Aquilia
- Seats: Double passenger seat, foldable, with PC storage, pass-through flap & storage compartment
- Lashing eyes on the side of the cargo area, mobile

- ABS with EBV and brake assist
- Airbag: Driver's side
- Analog speedometer instrument with 3.5-inch TFT display
- Exterior mirrors, electrically adjustable and heated
- Diesel particulate filter
- eCall emergency call system
- ESP with hill start assist, load detection and ASR
- Transmission: 6-speed EDC dual-clutch transmission
- Rear door, opening angle 180°, without window
- Front air conditioning
- Paint finish: Solid
- Steering wheel adjustable in 2 ways (length, height)
- Mobility set
- Upholstery: Cloth
- Wheels: 16-inch steel rims with 215/65 R 16 tires
- Sliding door on the right, closed
- Power steering
- Seats: Driver's seat "Comfort" adjustable in 3 ways
- Lane Departure Warning
- Partition wall closed, no window
- Electronic immobilizer
- Central locking with remote control

- Wooden floor in the cargo area (12 mm)
- LED lighting in the cargo area (horizontal strip)
- Radio: EASY LINK 8-inch with smartphone integration and navigation (online multimedia system with 8-inch touchscreen - smartphone integration via Android Auto or Apple CarPlay - DAB+ digital radio, FM and AM radio - Bluetooth hands-free system - USB port, audio streaming - voice control - steering wheel controls - navigation system with map data for Europe)

Brief expert findings

Documents submitted	At the time of the inspection, the vehicle registration certificate Part 2 (title) was available, but the vehicle registration certificate Part 1 (document) was not. (Copy)
VIN comparison	The vehicle identification number (VIN) was read from the vehicle and its conformity with the submitted documents was confirmed by the undersigned during the inspection.
Inspection	The inspection conditions were sufficient for the assessment of the vehicle. Lifting equipment and/or a pit were available for examining the vehicle.
Test drive	No test drive/shunting maneuver was carried out during the inspection of the vehicle.
Engine function test	An engine test run was performed.



Value reducing factors

No.	Component group	Description
1	Sill - right side	Sill - Dent / paintcoat damage - Smart repair
2	Wing mirror - right side	Mirror housing - Damaged - Replace

Wear and tear

No.	Component group	Description
1	Front bumper	Front bumper - Stone chips - No deduction
2	Vehicle glazing	Windscreen - Stone chips - No deduction

The vehicle shows signs of wear and tear commensurate with its age and use.

Missing parts

Description

Equipment - Vehicle key with remote control

Order/Scope of Order

An order was placed to prepare a sales report for the described vehicle. This report includes the following:

- Description of key vehicle information
- Documentation of equipment features
(*Delivery by third-party service providers*)
- Documentation of damage, defects, missing parts
- Documentation of prior damage, unrepaired prior damage, repainting
- A brief visual or functional inspection of the equipment details, if possible.
(*Functional testing of driver assistance systems is not included in the scope of services!*)
- a photographic documentation of the vehicle

Basis for the order

This product is based on the guidelines for vehicle returns and valuations of light commercial vehicles published by Alphabet Fleet Management GmbH. The expert makes the specific findings in each individual case objectively, within the framework of the prescribed standards, based on their own expertise.

The vehicle inspection takes place in a fully assembled, unassembled state.

Damage or defects that can only be detected during disassembly/diagnostic work or through further investigation remain within the realm of prognostic risk. An increased risk exists due to concealed defects caused by fraudulent misrepresentation and which were not identifiable by the expert.

Damage or defects resulting from normal use or wear and tear of the vehicle will be accepted in accordance with the applicable standard.

There was no explicit identification or monetary consideration of the expected features within the product.

Features which, in their nature and extent, slightly exceed normal use but do not constitute unacceptable damage, will be documented and indicated as signs of wear, if applicable.

Damage or defects that, according to the applicable standard, can no longer be attributed to normal use or wear and tear are listed under "Value Reducing Factors" in the product description.

Depending on the product specification, a monetary ID can be provided. If this takes place, the costs can be 100% d or pro rata depending on the vehicle's age and mileage.

Previous damages

No apparent prior damage that had been repaired could be found on the vehicle.



Comments

- allwetterradsatz ist kein Bestandteil des Auslieferungsumfangs.



Figure 1: Diagonal front (left)



Figure 2: Diagonal front (right)



Figure 3: Diagonal rear (left)



Figure 4: Diagonal rear (right)

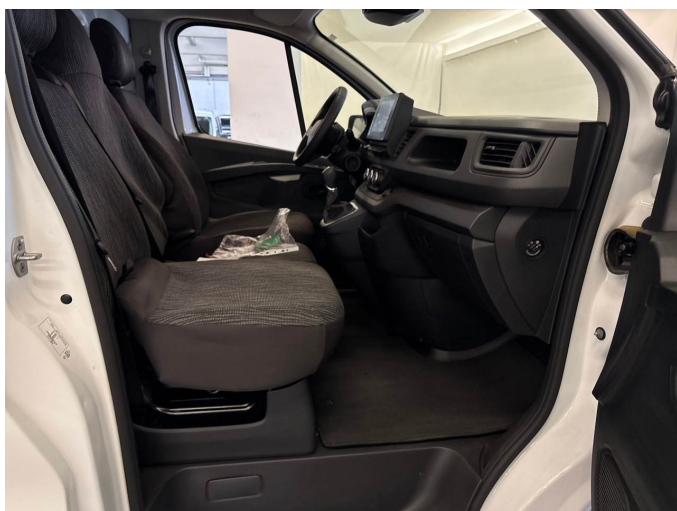


Figure 5: Interior - front

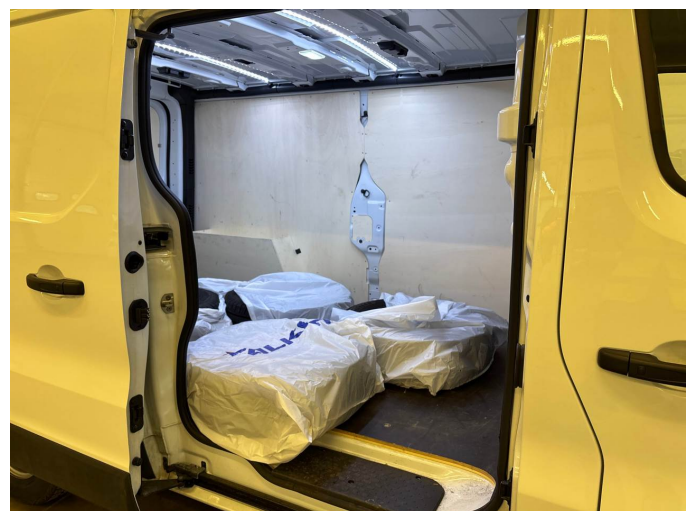


Figure 6: Interior - rear



Figure 7: Instrument cluster



Figure 8: Instrument panel



Figure 9: Interior 360° view

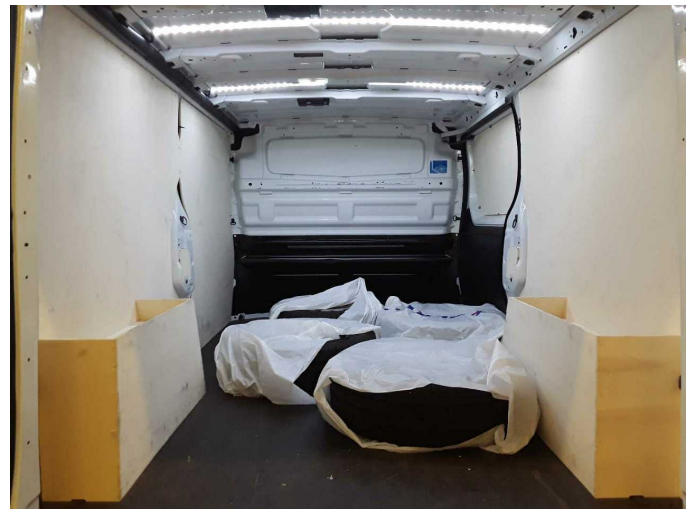


Figure 10: Cargo area

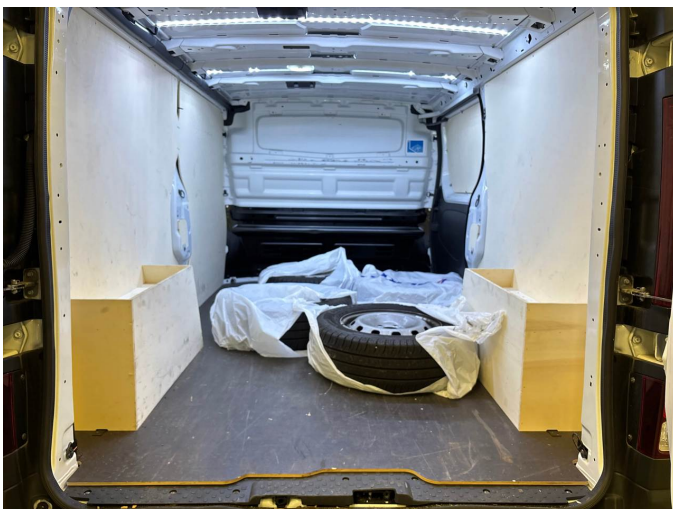


Figure 11: Cargo area



Figure 12: VIN



Figure 13: Mounted tyres



Figure 14: Documents



Figure 15: Additional tyres



Figure 16: Navigation

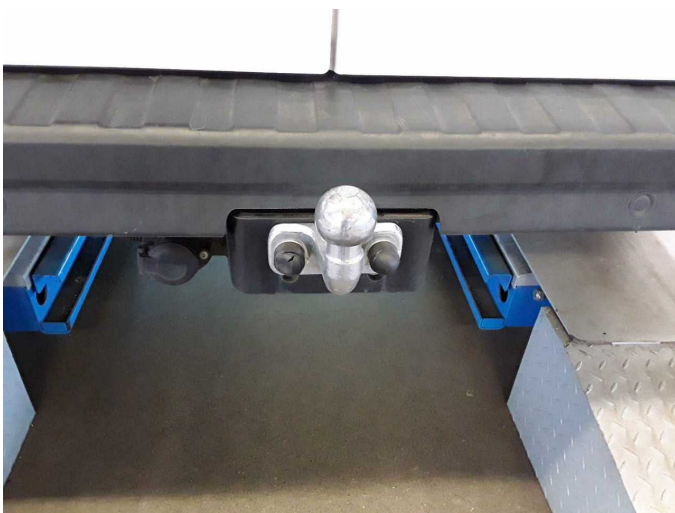


Figure 17: Misc.



Figure 18: Misc.



Figure 19: Misc.



Figure 20: Misc.



Figure 21: Misc.



Figure 22: Misc.



Figure 23: Misc.



Figure 24: Misc.



Figure 25: Misc.



Figure 26: Misc.

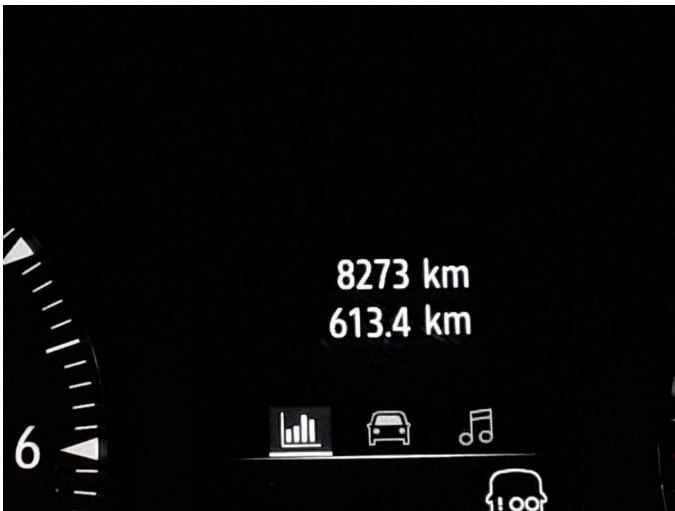


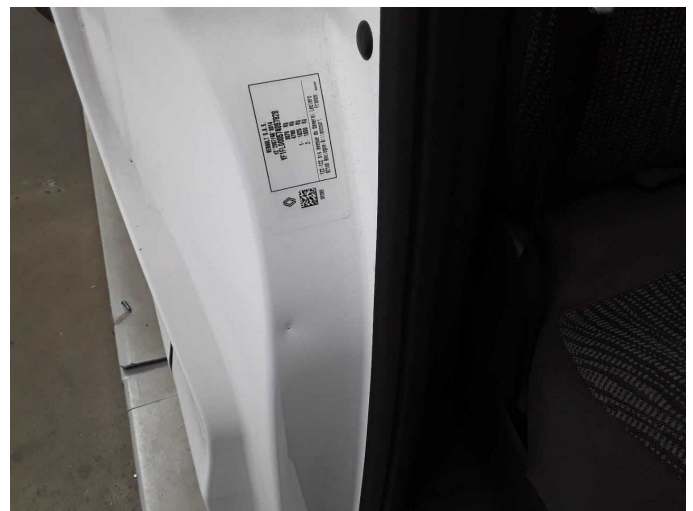
Figure 27: Misc.



Figure 28: Misc.



Figure 29: Misc.



Damage 1: Sill - right side: Sill - Dent / paintcoat damage - Smart repair



Damage 2: Wing mirror - right side: Mirror housing - Damaged - Replace



Damage 2: Wing mirror - right side: Mirror housing - Damaged - Replace



Damage 2: Wing mirror - right side: Mirror housing - Damaged - Replace



Damage 2: Wing mirror - right side: Mirror housing - Damaged - Replace



Wear and tear 1: Front bumper: Front bumper - Stone chips - No deduction



Wear and tear 1: Front bumper: Front bumper - Stone chips - No deduction



Wear and tear 2: Vehicle glazing: Windscreen - Stone chips - No deduction



Wear and tear 2: Vehicle glazing: Windscreen - Stone chips - No deduction



Missing part 1: Equipment: Vehicle key with remote control - Missing - Replace