

Expertise

Protocol number: 46325258
Order No. / Reference: 26574197
Inspection date: 25 Jun 2026

Manufacturer: Mercedes-Benz

Model: eVito Tourer 129 Lang PRO

VIN: W1V44770313847913



Vehicle details

Manufacturer / Type / Model / Equipment

Mercedes-Benz eVito Tourer 129 Lang PRO

Vehicle Identification number W1V44770313847913

Mileage (Read) 13,961 km

First registration 16 Sept 2021

Number of holders 2

Power / Engine displacement 70 kw /

Fuel type / Cylinder Electric / 0

Gearbox / Number of gears Direct drive / 1

Type of drive Front drive

Type of vehicle Van

Colour / colour code Artikweiß

Doors / Seats 4 / 8

Upholstery type Cloth

Colour of upholstery Black-Grey

readiness to drive Roadworthy



Vehicle details

Maintenance booklet / proof	digital proof / complete	Next maintenance in	317 Tag(e)
Last service on / at	05/2026 at 13,716		
Key is / should be	1 / 2	FZG documents	ZB#2 (B) was available (copy), ZB#1 (S) was not available.
		Letter No.	GI216465
Previous damage / Accident	None detectable	Repainting	None detectable
Inspection conditions	sufficient	Lifting equipment / pit	No
Test drive	Not performed	Engine function test	Performed
readiness to drive	Roadworthy		
Manufacturer key number/ type code number	2222 / AAJ 00033		
Emission standard	2017/1151;WLTP;reine Elektrofz	fine dust sticker	
Permitted total weight	3,500 kg	Empty weight	

Tyres

Mounted tyres

#	Tyre size	Type of tyre	Manufacturer	Tread depth
1)	245/55 R17 106H	Winter tyres on Light alloy	Goodyear	4mm / 4mm
2)	245/55 R17 106H	Winter tyres on Light alloy	Goodyear	7mm / 7mm

Legend: Tread depth information for the left tire is listed first, for the right tire it is listed second on the axle in the direction of travel.



Equipment

Standard equipment

- Airbag for driver and front passenger
- Airbag: Thorax-pelvis-sidebag for driver
- Airbag: Windowbag for driver and front passenger
- Anti-lock braking system
- Electrically adjustable and heated exterior mirrors, left and right
- Outdoor temperature display
- Battery: AC charging 11 kW / DC charging 50 kW
- Battery: fleece battery 12 V / 92 Ah
- Hill start assist
- third brake light
- Roof cladding
- ESP (Electronic Stability Program (ESP))
- Chassis: Standard chassis Plus
- Fixed rear left and right windows
- Front left window fixed in SW/ cargo area sliding door
- Comfort electric window regulator front (driver/passenger)
- Speed limit 140 km/h
- Weight variant 3,500 kg
- Grab handle for entry of driver and passenger
- Lockable glove compartment
- HOLD function
- Interior mirror (rearview mirror)
- Child safety locks on doors in the passenger compartment
- Communication module (LTE) for digital services
- Plastic floor TPO passenger compartment
- Paint finish: Solid color paint
- Steering wheel adjustable for tilt and height
- electric steering
- Mercedes-Benz emergency call system (communication module (LTE) for digital services breakdown management)
- Breakdown management
- Radio: Pre-installation for digital radio DAB
- Tires: Comfort tires
- Sliding door on the right side
- Seats: 3-seater bench, 1st row passenger compartment (folding outer seat)
- Seats: Driver's seat adjustable
- Seats: Rear seat mounting with quick-release fasteners, 2 rows of seats
- Cruise control
- Ambient lighting tailgate
- Pre-installation for remote and navigation services
- Warning triangle
- Immobiliser
- Central locking with radio remote control
- Airbag: Thorax airbag - Pelvis side airbag for front passenger
- Acoustic environmental protection
- ATTENTION ASSIST (ATTENTION ASSIST can assist the driver on long, monotonous journeys by monitoring attention. If signs of fatigue or increasing inattention are detected, it suggests a break.)
- Battery: High-voltage battery (90 kWh)
- Fixing points in the roof frame
- Brake assist, active
- Brake lights, adaptive
- Entry grab handle for the cargo area sliding door
- Driving light assistant (automatically switching on driving lights)
- Window in rear door/tailgate (with wiper/washer system)
- Front right window fixed in SW/ cargo area sliding door
- Parking brake
- Transmission: Direct drive
- Seatbelt warning device for driver and front passenger seat
- Grab handle in the rear
- Tailgate with window and wiper/washer system
- Interior lights in the rear
- Interior trim, high-end finish
- Instrument cluster with pixel matrix display (operated via the buttons on the multifunction steering wheel - round instruments for speedometer and tachometer or fuel level and coolant temperature - high-quality pixel matrix display in white and red between the large round instruments)
- Headlight range control
- Multifunction steering wheel (with trip computer)
- Package: Maintenance Package
- Upholstery: Cloth
- Rain sensor
- Tire pressure monitoring
- electromechanical power steering
- Seats: Adjustable passenger seat
- Seats: Passenger compartment seating, 3-seater bench, 2nd row
- Seat heating on driver's side
- 12V socket at the front
- Doors: active locking mechanism for sliding doors
- First aid kit
- Warm air duct to the passenger compartment
- Windshield washer fluid level warning light
- Heat-insulating glass all around
- Auxiliary heater, electric



Extra equipment

- Battery: AC charging 11 kW / DC charging 110 kW
- Tinted rear windows, black glass
- Speed limit 160 km/h
- semi-automatic air conditioning system controlled by TEMPOMATIC
- Center console with storage compartment
- Radio: Audio 30 (7" LCD touchscreen - Apple CarPlay and Android Auto - Bluetooth 3.0, hands-free system)
- Radio: Digital Radio DAB
- Radio: Radio Generation 2
- Radio accessories: 2-way speakers front + rear.
- Tires: M+S tires
- Seats: Comfort passenger seat
- Seats: Lumbar support for driver's seat
- 12V socket for rear seat rails, right and left
- Lighting: Lighting in the rear grab handle with reading light
- Double cup holder in the center of the cockpit
- Climate: Pre-conditioning
- Comfort locking system with IR remote control (comfort opening and closing)
- Parktronic (the system uses ultrasonic sensors in the front and rear bumpers to monitor the vehicle's surroundings. The sensors detect obstacles at speeds up to 18 km/h. Parktronic visually indicates the distance to an obstacle (yellow and red LEDs) and also provides acoustic feedback from the red LEDs onwards.)
- Wheels: Alloy wheels 7 J x 17, 5-twin-spoke design
- Seats: Comfort driver's seat
- Seat heating on passenger side
- Bumpers and attachments painted in body color

Brief expert findings

Documents submitted	At the time of the inspection, the vehicle registration certificate Part 2 (title) was available, but the vehicle registration certificate Part 1 (document) was not. (Copy)
VIN comparison	The vehicle identification number (VIN) was read from the vehicle and its conformity with the submitted documents was confirmed by the undersigned during the inspection.
Inspection	The inspection conditions were sufficient for the assessment of the vehicle. No lifting equipment or pit was available for inspecting the vehicle. Therefore, inspection of the vehicle's underside was only possible to a limited extent.
Test drive	No test drive/shunting maneuver was carried out during the inspection of the vehicle.
Engine function test	An engine test run was performed.
readiness to drive	The vehicle was roadworthy at the time of inspection.

Value reducing factors

No.	Component group	Description
1	Misc.	Main inspection - No evidence - No deduction
2	Misc.	Inspection / maintenance (Intervall überzogen) - No deduction
3	Trim / covers	Floor covering - front centre - Holes - Loss in value
4	Body	B-pillar - left side - Scratch(es) - Smart repair

Wear and tear

No.	Component group	Description
1	Vehicle glazing	Windscreen - Stone chips - No deduction
2	Bonnet	Bonnet - Stone chips - No deduction
3	Front bumper	Front bumper - Stone chips - No deduction
4	Rear bumper	Rear bumper - Scratch(es) - No deduction
5	Wheel / tyres	Tyre - front (Profiltiefe über 4mm) - No deduction

The vehicle shows signs of wear and tear commensurate with its age and use.

Missing parts

Description

Equipment - Vehicle key



Order/Scope of Order

An order was placed to prepare a sales report for the described vehicle. This report includes the following:

- Description of key vehicle information
- Documentation of equipment features
(Delivery by third-party service providers)
- Documentation of damage, defects, missing parts
- Documentation of prior damage, unrepaired prior damage, repainting
- A brief visual or functional inspection of the equipment details, if possible.
(Functional testing of driver assistance systems is not included in the scope of services!)
- a photographic documentation of the vehicle

Basis for the order

This product is based on the guidelines for vehicle returns and valuations of light commercial vehicles published by Alphabet Fleet Management GmbH. The expert makes the specific findings in each individual case objectively, within the framework of the prescribed standards, based on their own expertise.

The vehicle inspection takes place in a fully assembled, unassembled state.

Damage or defects that can only be detected during disassembly/diagnostic work or through further investigation remain within the realm of prognostic risk. An increased risk exists due to concealed defects caused by fraudulent misrepresentation and which were not identifiable by the expert.

Damage or defects resulting from normal use or wear and tear of the vehicle will be accepted in accordance with the applicable standard.

There was no explicit identification or monetary consideration of the expected features within the product.

Features which, in their nature and extent, slightly exceed normal use but do not constitute unacceptable damage, will be documented and indicated as signs of wear, if applicable.

Damage or defects that, according to the applicable standard, can no longer be attributed to normal use or wear and tear are listed under "Value Reducing Factors" in the product description.

Depending on the product specification, a monetary ID can be provided. If this takes place, the costs can be 100% or pro rata depending on the vehicle's age and mileage.

Previous damages

No apparent prior damage that had been repaired could be found on the vehicle.

Comments

- Ausstattungsliste ohne Gewähr.



Figure 1: Diagonal front (left)



Figure 2: Diagonal front (right)



Figure 3: Diagonal rear (left)



Figure 4: Diagonal rear (right)



Figure 5: Interior - front



Figure 6: Interior - rear



Figure 7: Instrument cluster



Figure 8: Instrument panel



Figure 9: Interior 360° view



Figure 10: Cargo area



Figure 11: VIN



Figure 12: Mounted tyres



Figure 13: Documents

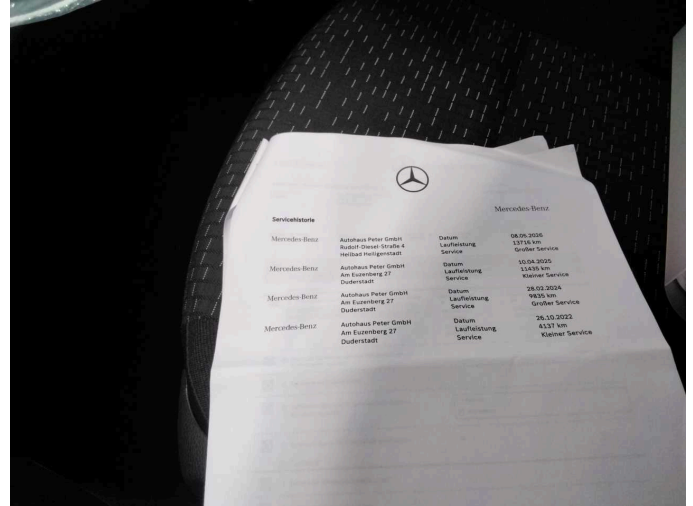


Figure 14: Documents



Figure 15: Navigation



Figure 16: Misc.



Figure 17: Misc.



Figure 18: Misc.



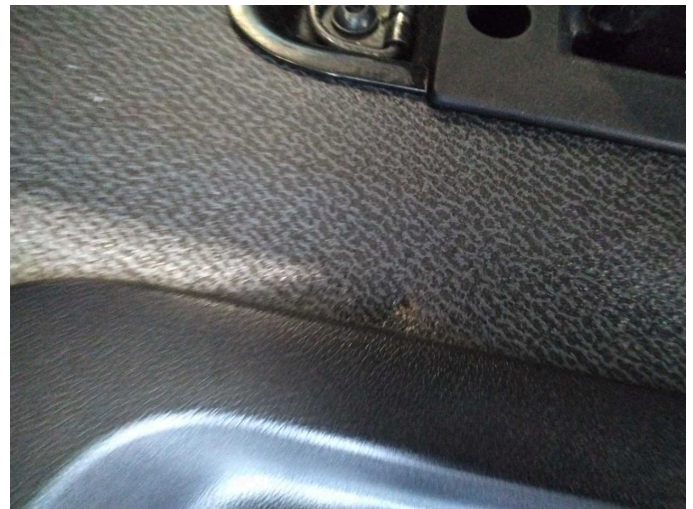
Damage 3: Trim / covers: Floor covering - front centre - Holes - Loss in value



Damage 3: Trim / covers: Floor covering - front centre - Holes - Loss in value



Damage 3: Trim / covers: Floor covering - front centre - Holes - Loss in value



Damage 3: Trim / covers: Floor covering - front centre - Holes - Loss in value



Damage 4: Body: B-pillar - left side - Scratch(es) - Smart repair



Damage 4: Body: B-pillar - left side - Scratch(es) - Smart repair



Missing part 1: Equipment: Vehicle key - Missing - Replace