

Expertise

Protocol number: 45943913
Order No. / Reference: 26395520
Inspection date: 11 Jun 2026

Manufacturer: Skoda

Model: Superb Combi 2.0 TDI DSG Premium Edition

VIN: TMBJR9NP6N7022233



Vehicle details

Manufacturer / Type / Model / Equipment

Skoda Superb Combi 2.0 TDI DSG Premium Edition

Vehicle Identification number TMBJR9NP6N7022233

Mileage (Read) 106,462 km

First registration 11 Apr 2022

Number of holders 1

Power / Engine displacement 147 kw / 1,968 ccm

Fuel type / Cylinder Diesel / 4

Gearbox / Number of gears Automatic / 7

Type of drive Front drive

Type of vehicle Station wagon

Colour / colour code Graphite Grau Metallic (F7C)

Doors / Seats 5 / 5

Upholstery type Leather

Colour of upholstery Black



Vehicle details

Maintenance booklet / proof	digital proof / complete	Next maintenance in	18,500 km
Last service on / at	01/2026 at 94,961 km		
Key is / should be	2 / 2	FZG documents	ZB#2 (B) was available (copy), ZB#1 (S) was not available.
		Letter No.	GG215469
Previous damage / Accident	Detectable	Repainting	None detectable
Inspection conditions	sufficient	Lifting equipment / pit	No
Test drive	Not performed	Engine function test	Performed
Manufacturer key number/ type code number	8004 / AWB 00216		
Emission standard	EURO6;WLTP;AP;PI/CI; M, N1 I	fine dust sticker	
Permitted total weight	2,237 kg	Empty weight	

Tyres

Mounted tyres

#	Tyre size	Type of tyre	Manufacturer	Tread depth
1)	215/55 R17 94W	Summer tyres on Light alloy	Pirelli	4mm / 4mm
2)	215/55 R17 94W	Summer tyres on Light alloy	Pirelli	5mm / 5mm

Additional tyres

#	Tyre size	Type of tyre	Manufacturer	Tread depth
1)	215/55 R17 98V	Winter tyres on Light alloy	Goodyear	5mm / 5mm
2)	215/55 R17 98V	Winter tyres on Light alloy	Goodyear	7mm / 7mm

Replacement

Typ	Tyre size	Type of tyre	Manufacturer	Tread depth
	Tirefit	Expiration date 11/2025		

Legend: Tread depth information for the left tire is listed first, for the right tire it is listed second on the axle in the direction of travel.

TÜV SÜD Auto Partner GmbH
Gutenbergstraße 13
70771 Leinfelden-Echterdingen

Inspection location
Hartmann Fleet Professionals GmbH
Leerenstraße 25
29683 Bad Fallingbommel



Equipment



Standard equipment

- Closed storage compartments behind the wheel arches in the trunk, including cargo elements
- Airbag, driver and switchable passenger airbag
- Airbag, driver's knee airbag
- Airbag, head airbags
- Airbag, front side airbags
- Anti-lock braking system (ABS)
- Traction control (ASR)
- Electrically adjustable and heated exterior mirrors
- Exterior mirrors and door handles in body color
- Electrically folding exterior mirrors (with boarding lights - interior and exterior mirrors with automatic dimming)
- Hydraulic brake assist (HBA)
- Roof rails, anodized
- Diesel particulate filter and SCR catalyst
- Tachometer
- Dynamic Light Assistant (Masked Continuous High Beam)
- Electronic parking brake including auto-hold function
- Electronic transverse differential lock (XDS+)
- Driving light assistant and rain sensor (tunnel light, coming and leaving home function)
- Front radar assist including city emergency braking function (The front radar assist warns of impending collisions and initiates braking to reduce the force of an unavoidable impact. The front radar assist continuously monitors the distance to the vehicle ahead using a radar sensor integrated into the radiator grille.)
- Heated rear window
- ISOFIX preparation on the outer rear seats, including top tether
- Air Care Climatronic air conditioning (3 zones) (fully automatic, separately adjustable for driver and front passenger, including odor and allergen filter and air-conditioned glove compartment)
- Metal loading sill protector
- LED taillights in crystal glass look and animated turn signals
- Remote release of the rear seat backrests in the trunk
- Steering wheel: 2-spoke leather steering wheel with multifunction buttons (including gearshift and handbrake levers in leather)
- Matrix LED headlights (AFS - dynamic high beam assist - automatic headlight range control - headlight cleaning system - LED taillights in crystal glass look - incl. dynamic turn signals)
- Multifunctional storage compartment under the boot cover
- LED fog lights with integrated cornering lights
- Upholstery: Glamour leather interior (seat surfaces made of fine nappa leather combined with high-quality materials)
- Radio: Bolero infotainment system (capacitive 8" touch display in glass design - Wireless Smartlink (Apple CarPlay, Android Auto))
- Radio accessories: USB ports at the front (Type-C) and USB charging port (Type-A) in the center armrest
- Tire mobility kit (tire repair spray incl. compressor)
- Heated windshield washer nozzles
- Storage compartments (ticket holder on the windshield, 4 roof grab handles, rear with coat hooks, coat hooks on the B-pillar, holder for the warning vests in the front doors, glasses compartment in the headliner, storage compartments in the door panels (front and rear) with 1.5l bottle holders, cup holder in the front center console with easy-open bottle opening, storage pockets on the front seat backrests, storage compartments behind the wheel arches in the trunk including cargo elements, illuminated trunk)
- Illuminated glove compartment
- Hill start assist
- Grey headliner
- Decorative inlay Argenzo Zebrano
- Digital instrument cluster (Virtual Cockpit) 10.2"
- Third brake light
- Electric tailgate opening (including boot cover and multifunction storage compartment)
- Electronic Stability Control (ESC)
- Chassis: Sport chassis (15 mm lowering)
- Electric windows front and rear, including anti-pinch protection and child safety lock
- Front and rear footwell lighting
- Cruise control system (cruise control) including speed limiter
- Transmission: 7-speed dual-clutch transmission (DSG)
- Tinted windows
- Rear window wiper including windshield washer system
- Kessy, keyless entry and start-stop system
- Child safety lock for rear doors & windows, electric
- Boot cover, roll-up and removable, semi-automatic
- Comfort opening for the electric tailgate (sensor-controlled opening)
- Front and rear headrests are height-adjustable.
- LED ambient lighting (dashboard and decorative trim with selectable color climate, reading lamps, door handles and footwell as well as sun visors with LED lighting - projection of the SKODA lettering from the underside of the door onto the ground (front doors))
- Steering wheel: height and reach adjustable
- Reading lights at the front and rear of the headliner
- Rear center armrest with cup holders and pass-through option
- Front center armrest with storage compartment
- Engine drag torque control (MSR)
- Multi-collision brake
- Rear parking sensors
- Progressive steering (adjustment of the steering angle depending on the speed)
- Radio accessories: Digital radio reception DAB+
- Radio accessories: In-car communication
- Radio accessories: Voice control
- Radio accessories: Wireless SmartLink for Apple CarPlay
- Tire pressure monitoring
- Wheels: 17" Drakon alloy wheels (6.5J x 17" ET 41 with 215/55 R17 tires - anthracite polished)



- Superb safety belts (Height-adjustable three-point front seat belts with belt tensioners - Three three-point rear seat belts - Belt fastening indicator for all seats)
- Seats: Adjustable lumbar support in the front seats
- Seats: Electrically adjustable front seats with memory function
- Seats: Height-adjustable front seats
- SKODA Care Connect (SOS emergency call function (Emergency Call incl. automatic activation in the event of an accident with airbag deployment), Mobility service (connection for rapid assistance in case of breakdown), Information service (connection to the hotline for all questions relating to vehicle functions), Free remote vehicle access for 1 year (Remote Access) with access to vehicle data and functions via smartphone, e.g. parking position, activating hazard warning lights, current fuel level)
- Lashing eyes in the trunk
- Immobiliser

Extra equipment

- Airbag, proactive occupant protection including rear side airbags
- Chassis: Adaptive chassis DCC (10 mm lowering, adjustable damper setting) (including driving profile selection (Normal, Comfort, Eco, Sport, Individual))
- Network program in the trunk
- Package: Assistance (Lane Change Assist - Reversing Camera - Parking Assist - Preparation for a Trailer Hitch - (Active Tire Pressure Monitoring System) - Driver Fatigue Detection)
- Package: Safety (Proactive occupant protection - rear side airbags - Isofix anchorage for passenger seat)
- Package: Transport (Combi) (Interior waste bin - Boot net - Variable loading floor - Luggage net partition)

- Seat: Massage function for electric driver's seat
- Seats: Heated front seats
- Seats: Ventilated front seats for leather interior (perforated leather)
- Seats: Electric operation of the front passenger seat from the rear
- Seats: Rear seat backrest split 60:40, foldable
- Sun visor on driver and passenger side with illuminated make-up mirror
- Start/stop system including brake energy recuperation
- 12V socket in the trunk
- 12V socket in the center console, front and rear
- Telephone: Convenient hands-free phone system with Bluetooth (without connection to an external antenna)
- Textile floor mats
- Chrome-plated elements (on air vents, light switches, music or navigation systems, air conditioning)
- Central locking with remote control

- Electric panoramic sunroof including sunshade (elimination of the glasses compartment in the headliner)
- Headrests: Sleeping headrests on the outer rear seats
- Paint finish: Metallic
- Steering wheel: Heated steering wheel (2 spokes) (with paddle shifters)
- Package: Business Amundsen (DSG) (Amundsen navigation system - voice control - Wi-Fi hotspot - Wireless Smartlink for Apple CarPlay - 8" capacitive touchscreen in glass design - Phonebox - Traveller assistance system (traffic sign recognition, predictive lane keeping assist pACC, adaptive lane keeping assist, emergency and traffic jam assist, capacitive steering wheel with hands-off detection) - 230 V socket and 3 USB ports, tablet holder - Sunset - Infotainment Online (3-year subscription))

Brief expert findings

Documents submitted	At the time of the inspection, the vehicle registration certificate Part 2 (title) was available, but the vehicle registration certificate Part 1 (document) was not. (Copy)
VIN comparison	The vehicle identification number (VIN) was read from the vehicle and its conformity with the submitted documents was confirmed by the undersigned during the inspection.
Inspection	The inspection conditions were sufficient for the assessment of the vehicle. No lifting equipment or pit was available for inspecting the vehicle. Therefore, inspection of the vehicle's underside was only possible to a limited extent.
Test drive	No test drive/shunting maneuver was carried out during the inspection of the vehicle.
Engine function test	An engine test run was performed.



Value reducing factors

No.	Component group	Description
1	Equipment	Tirefit filler - Expired - Replace
2	Wing mirror - left side	Cap - Scratch(es) - Smart repair
3	Boot lid / rear door	Boot lid - Glued / labelled - De-glue / neutralise
4	Bonnet	Bonnet - dent(s) - Smooth repair work
5	Interior	Interior (Tier) - Odour - Ozone treatment
6	Boot lid / rear door	Boot lid - Corrosion - Paint
7	Front bumper	Front bumper - Dent / paintcoat damage - Paint
8	Vehicle glazing	Windscreen - Stone chips - Replace

Wear and tear

No.	Component group	Description
1	Seat - front	Seat cover - left side - Scratch(es) - No deduction
2	Rear bumper	Rear bumper - Scratch(es) - No deduction

The vehicle shows signs of wear and tear commensurate with its age and use.

Previous damages

No.	Previous damage	Extent of damage (Net)
1	Front, Provided by user / customer, from 19 Apr 2022	1.527,25 €

Order/Scope of Order

An order was placed to prepare a sales report for the described vehicle. This report includes the following:

- Description of key vehicle information
- Documentation of equipment features
(*Delivery by third-party service providers*)
- Documentation of damage, defects, missing parts
- Documentation of prior damage, unrepaired prior damage, repainting
- A brief visual or functional inspection of the equipment details, if possible.
(*Functional testing of driver assistance systems is not included in the scope of services!*)
- a photographic documentation of the vehicle



Basis for the order

This product is based on the guidelines for vehicle returns and valuations published by Alphabet Fleet GmbH. The expert makes the specific findings in each individual case objectively, within the framework of the prescribed standards, based on their own expertise.

The vehicle inspection takes place in a fully assembled, unassembled state.

Damage or defects that can only be detected during disassembly/diagnostic work or through further investigation remain within the realm of prognostic risk. An increased risk exists due to concealed defects caused by fraudulent misrepresentation and which were not identifiable by the expert.

Damage or defects resulting from normal use or wear and tear of the vehicle will be accepted in accordance with the applicable standard.

There was no explicit identification or monetary consideration of the expected features within the product.

Features which, in their nature and extent, slightly exceed normal use but do not constitute unacceptable damage, will be documented and indicated as signs of wear, if applicable.

Damage or defects that, according to the applicable standard, can no longer be attributed to normal use or wear and tear are listed under "Value Reducing Factors" in the product description.

Depending on the product specification, a monetary ID can be provided. If this takes place, the costs can be 100% d or pro rata depending on the vehicle's age and mileage.

Previous damages

According to available information previous damages were repaired at the vehicle. Traces of repairs, which allow conclusions about the area of repair, were not recognizable during the inspection.

Comments

Der beiliegende Winterradsatz ist kein Bestandteil der Ausstattung.



Figure 1: Diagonal front (left)



Figure 2: Diagonal front (right)



Figure 3: Diagonal rear (left)



Figure 4: Diagonal rear (right)



Figure 5: Interior - front



Figure 6: Interior - rear



Figure 7: Instrument cluster



Figure 8: Instrument panel



Figure 9: Interior 360° view



Figure 10: Cargo area



Figure 11: VIN



Figure 12: Mounted tyres

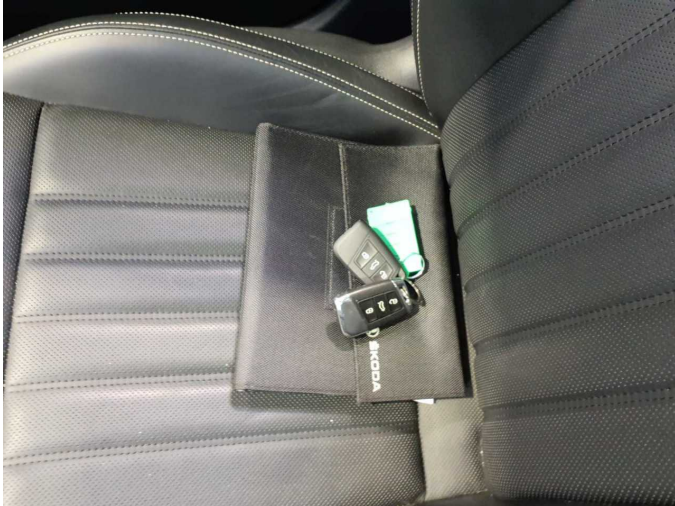


Figure 13: Documents



Figure 14: Additional tyres



Figure 15: Additional tyres



Figure 16: Additional tyres



Figure 17: Navigation



Figure 18: Misc.



Figure 19: Misc.



Figure 20: Misc.

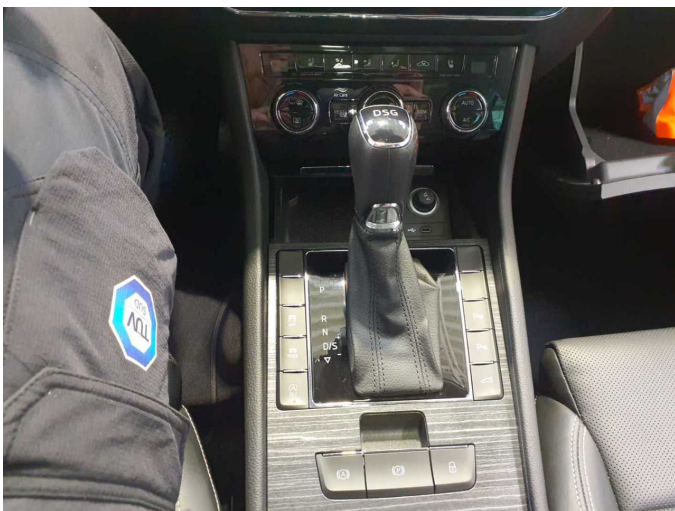


Figure 21: Misc.



Figure 22: Misc.



Figure 23: Misc.

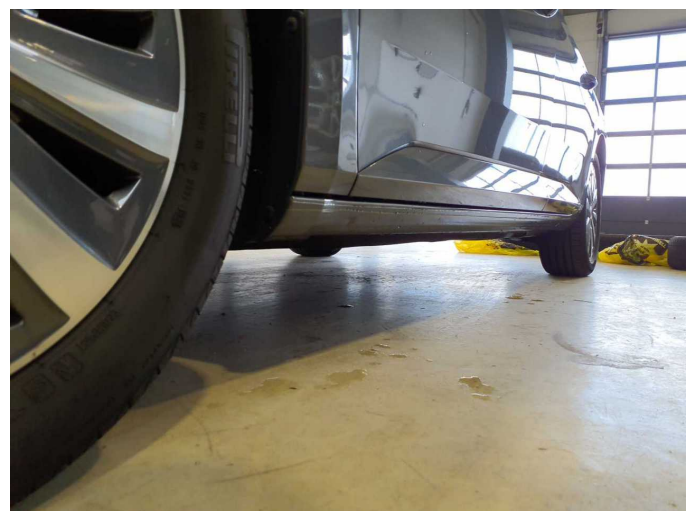


Figure 24: Misc.



Figure 25: Misc.



Figure 26: Misc.



Figure 27: Misc.



Figure 28: Misc.



Figure 29: Misc.

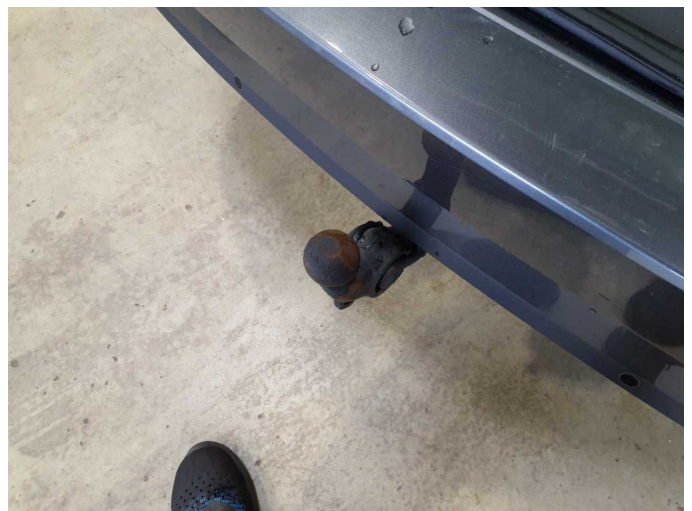


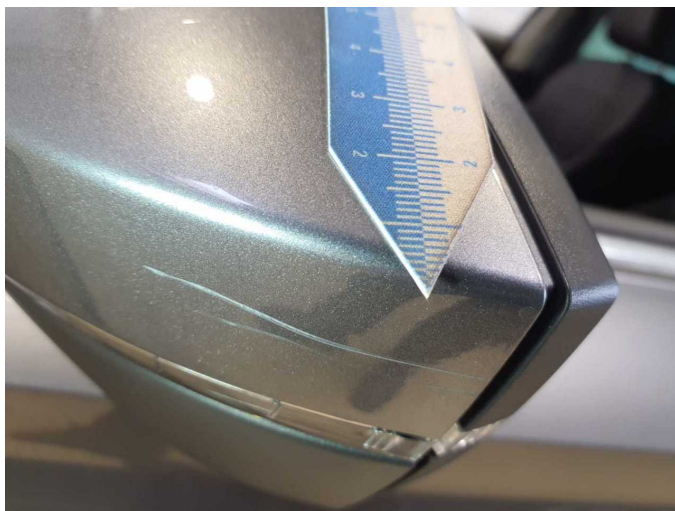
Figure 30: Misc.



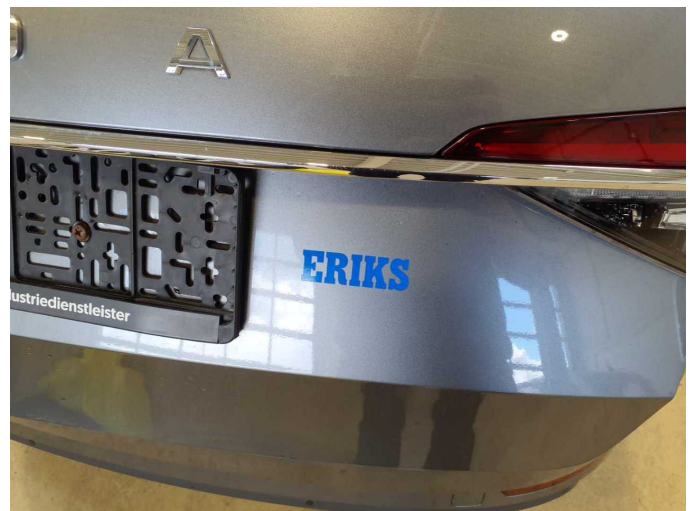
Damage 1: Equipment: Tirefit filler - Expired - Replace



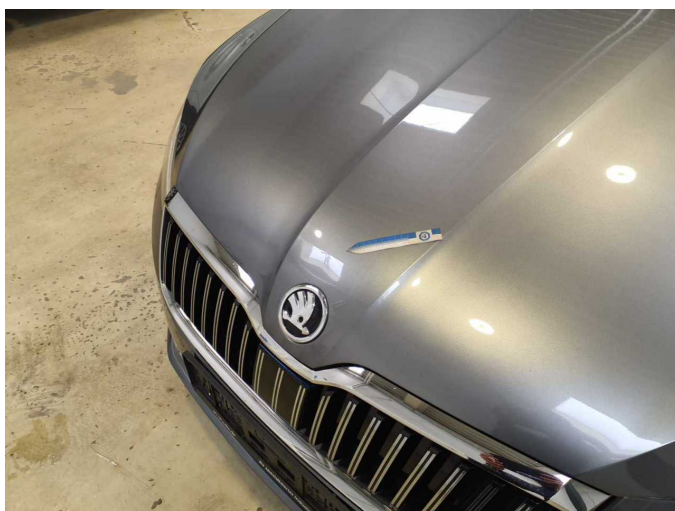
Damage 2: Wing mirror - left side: Cap - Scratch(es) - Smart repair



Damage 2: Wing mirror - left side: Cap - Scratch(es) - Smart repair



Damage 3: Boot lid / rear door: Boot lid - Glued / labelled - De-glu / neutralise



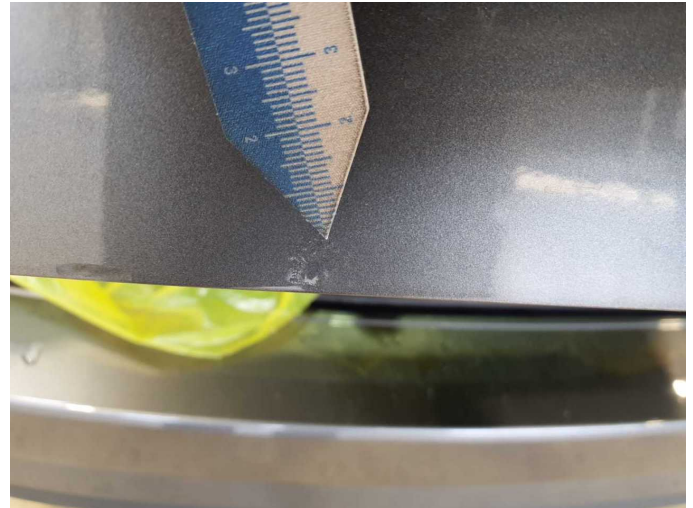
Damage 4: Bonnet: Bonnet - dent(s) - Smooth repair work



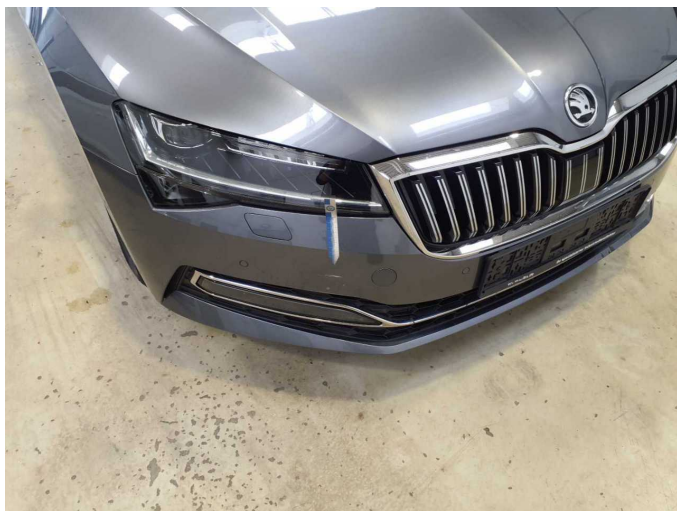
Damage 4: Bonnet: Bonnet - dent(s) - Smooth repair work



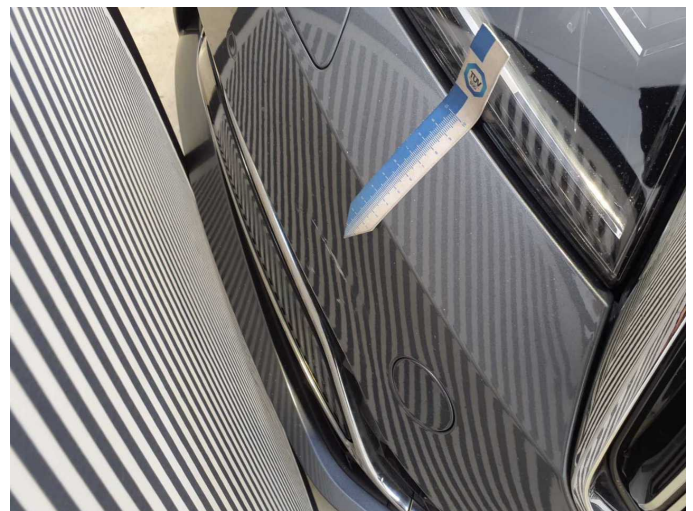
Damage 6: Boot lid / rear door: Boot lid - Corrosion - Paint



Damage 6: Boot lid / rear door: Boot lid - Corrosion - Paint



Damage 7: Front bumper: Front bumper - Dent / paintcoat damage - Paint



Damage 7: Front bumper: Front bumper - Dent / paintcoat damage - Paint



Damage 7: Front bumper: Front bumper - Dent / paintcoat damage - Paint



Damage 7: Front bumper: Front bumper - Dent / paintcoat damage - Paint



Damage 8: Vehicle glazing: Windscreen - Stone chips - Replace



Damage 8: Vehicle glazing: Windscreen - Stone chips - Replace



Wartungshistorie

(gemäß Auftraggeber Informationen)

Fahrgestellnummer: TMBJR9NP6N7022233

Hersteller / Modell: SKODA SKODA Superb Combi 2.0 TDI DSG Premium Edition

Datum	KM-Stand	Beschreibung
22.01.2026	94.961	Kraftstofffilter ern; Luftfiltereinsatz ern; Motoröl b. Wartung; Ölfilter ern; Regelwartungsdienst; Systemtest/Eigendiagnose; Wartung Sonstiges
11.11.2025	89.752	Systemtest/Eigendiagnose
20.05.2025	78.828	AU; Wartung Sonstiges
22.11.2024	65.251	Bremse Sonstiges; Bremsflüssigkeit; Bremsflüssigkeit ern; Bremsklötze hinten; Bremsscheiben hinten; Bremsscheiben vorne; Motoröl b. Wartung; Ölfilter ern; Regelwartungsdienst; Systemtest/Eigendiagnose; Wartung Sonstiges
06.07.2023	32.291	Motoröl b. Wartung; Ölfilter ern; Regelwartungsdienst; Wartung Sonstiges