

Expertise

Protocol number: 45791328
Order No. / Reference: 26328270
Inspection date: 22 May 2026

Manufacturer: Opel

Model: Grandland X 1.5 D Start/Stop Business Edition

VIN: W0VZCYHZ9L6045302



Vehicle details

Manufacturer / Type / Model / Equipment

Opel Grandland X 1.5 D Start/Stop Business Edition

Vehicle Identification number W0VZCYHZ9L6045302

Mileage (Read) 87,613 km

First registration 9 Oct 2020

Number of holders 1

Power / Engine displacement 96 kw / 1,499 ccm

Fuel type / Cylinder Diesel / 4

Gearbox / Number of gears Manual / 6

Type of drive Front drive

Type of vehicle SUV

Colour / colour code Jade Weiss

Doors / Seats 5 / 5

Upholstery type Cloth / leather combination

Colour of upholstery Black-Grey



Vehicle details

Maintenance booklet / proof	Available / complete	Next maintenance in	2,580 km
Last service on / at	10/2024 at 61,638 km		
Key is / should be	2 / 2	FZG documents	ZB#2 (B) was available (copy), ZB#1 (S) was not available.
		Letter No.	FT995023
Previous damage / Accident	Detectable	Repainting	None detectable
Inspection conditions	sufficient	Lifting equipment / pit	yes
Test drive	Not performed	Engine function test	Performed
Manufacturer key number/ type code number	1844 / AHG 00082		
Emission standard	EURO6;WLTP;AM;PI/CI; M, N1 I	fine dust sticker	
Permitted total weight	2,000 kg	Empty weight	

Tyres

Mounted tyres

#	Tyre size	Type of tyre	Manufacturer	Tread depth
1)	215/65 R17 99V	Winter tyres on Light alloy	Hankook	5mm / 5mm
2)	215/65 R17 99V	Winter tyres on Light alloy	Hankook	6mm / 6mm

Additional tyres

#	Tyre size	Type of tyre	Manufacturer	Tread depth
1)	215/65 R17 103V	Summer tyres on Light alloy	Michelin	4mm / 4mm
2)	215/65 R17 103V	Summer tyres on Light alloy	Michelin	4mm / 4mm

Replacement

Typ	Tyre size	Type of tyre	Manufacturer	Tread depth
	Tirefit	Expiration date 02/2025		

Legend: Tread depth information for the left tire is listed first, for the right tire it is listed second on the axle in the direction of travel.



Equipment

Standard equipment

- 2 folding ignition keys
- Storage compartments
- Airbag: Chest-pelvis-side airbags, driver and front passenger
- Electrically adjustable and heated exterior mirrors
- Hill Start Assist
- Roof design line in black
- Diesel particulate filter with SCR and oxidation catalyst
- Electric parking brake
- Electronic Stability Program Plus (ESP Plus)
- luggage compartment cover
- Transmission: 6-speed manual
- Interior lighting with front reading light
- Child safety lock in the rear doors, manual
- Rear headrests (3), height adjustable
- LED daytime running lights
- Center armrest, sliding, front, including storage compartment and cup holder
- Tire pressure warning
- Wheels: Tire repair kit
- Speed-sensitive power steering
- Visibility equipment
- Seats: Ergonomic active seat with AGR seal of approval, driver
- Phone: Wireless Charging
- Traffic sign recognition
- Pre-wiring for ISOFIX child seat mounting system, including top tether attachment points, rear outer
- Central locking with remote control and interior switches

Extra equipment

- 12V equipment (12V socket on the center console, in the rear and in the luggage compartment)
- Detachable trailer hitch (trailer stability program)
- Package: Business Package Travel (Dual-zone automatic climate control - Heated leather steering wheel and front seat heating - Heated ThermoTec windshield - Navi 5.0 IntelliLink with 8" color touchscreen display and voice control for audio, telephone and navigation - Automatic music recognition - Bluetooth audio streaming - Hands-free system - Navigation with integrated memory - Dynamic route guidance - Smartphone integration via Apple CarPlay and Android Auto - 2 USB ports - Dual tuner - 6 speakers)
- Paint finish: Uni Jade White
- Seats: Seat heating (multi-stage, driver and front passenger; heated leather steering wheel)

- Low beam automatically
- Driver and passenger side airbags
- Airbag: Head airbags, front and rear outer
- Anti-lock braking system (ABS) with cornering brake control and brake assist
- On-board computer
- Decorative trim, Frosted Silver
- Tachometer
- Electronic brake force distribution (EBD)
- Electric windows front and rear
- Cruise control with intelligent speed limiter
- rear window wiper
- Instrument panels in black, with rings in high-gloss black, 3.5" color driver information display
- Front headrests, height adjustable
- Steering wheel, height and reach adjustable
- Fog light
- Quickheat heating system
- Wheels: Light alloy 7 J x 17 with 5 double spokes
- Service interval indicator
- Seat belts
- Seats: 5 seats
- Start/Stop System
- 12-volt power outlet
- Traction control with engine and brake intervention TC Plus
- Lashing eyes in the luggage compartment (4)
- Immobiliser
- Tinted heat-insulating glazing

- Forward Collision Warning with Automatic Emergency Braking and Pedestrian Detection (monitors the distance (close, medium, far) to the vehicle ahead; if the vehicle approaches a vehicle or pedestrian too quickly, a warning tone sounds and a message appears in the driver information display. If a collision is imminent, the braking system is prepared and, if necessary, emergency braking is initiated to minimize the consequences of a potential collision. - Lane Keeping Assist: warns if the vehicle unintentionally leaves its lane - Driver Fatigue Detection)
- Park & Go (reversing camera - automatic parking assistant (recognition of parallel and perpendicular parking spaces at speeds below 20 km/h, exiting parallel parking spaces, automatic steering of the vehicle), including parking pilot, front and rear parking aid with audiovisual warning - electrically folding exterior mirrors with ambient lighting - blind spot warning in both exterior mirrors (active between 12 km/h and 140 km/h))



Brief expert findings

Documents submitted	At the time of the inspection, the vehicle registration certificate Part 2 (title) was available, but the vehicle registration certificate Part 1 (document) was not. (Copy)
VIN comparison	The vehicle identification number (VIN) was read from the vehicle and its conformity with the submitted documents was confirmed by the undersigned during the inspection.
Inspection	The inspection conditions were sufficient for the assessment of the vehicle. Lifting equipment and/or a pit were available for examining the vehicle.
Test drive	No test drive/shunting maneuver was carried out during the inspection of the vehicle.
Engine function test	An engine test run was performed.

Value reducing factors

No.	Component group	Description
1	Equipment	Tirefit filler - Expired - Replace

Wear and tear

No.	Component group	Description
1	Wheel / tyres	Alloy rim - front right side - Scratch(es) - No deduction
2	Side panel - rear left side	Sill - dent(s) - No deduction
3	Side panel - rear right side	Side panel - dent(s) - No deduction

The vehicle shows signs of wear and tear commensurate with its age and use.

Previous damages

No.	Previous damage	Extent of damage (Net)
1	Roof, Front, Side - left, Side right, Provided by user / customer, from 27 Jun 2024	9.898,95 €

Order/Scope of Order

An order was placed to prepare a sales report for the described vehicle. This report includes the following:

- Description of key vehicle information
- Documentation of equipment features
(*Delivery by third-party service providers*)
- Documentation of damage, defects, missing parts
- Documentation of prior damage, unrepaired prior damage, repainting
- A brief visual or functional inspection of the equipment details, if possible.
(*Functional testing of driver assistance systems is not included in the scope of services!*)
- a photographic documentation of the vehicle



Basis for the order

This product is based on the guidelines for vehicle returns and valuations published by Alphabet Fleet GmbH. The expert makes the specific findings in each individual case objectively, within the framework of the prescribed standards, based on their own expertise.

The vehicle inspection takes place in a fully assembled, unassembled state.

Damage or defects that can only be detected during disassembly/diagnostic work or through further investigation remain within the realm of prognostic risk. An increased risk exists due to concealed defects caused by fraudulent misrepresentation and which were not identifiable by the expert.

Damage or defects resulting from normal use or wear and tear of the vehicle will be accepted in accordance with the applicable standard.

There was no explicit identification or monetary consideration of the expected features within the product.

Features which, in their nature and extent, slightly exceed normal use but do not constitute unacceptable damage, will be documented and indicated as signs of wear, if applicable.

Damage or defects that, according to the applicable standard, can no longer be attributed to normal use or wear and tear are listed under "Value Reducing Factors" in the product description.

Depending on the product specification, a monetary ID can be provided. If this takes place, the costs can be 100% d or pro rata depending on the vehicle's age and mileage.

Previous damages

According to available information previous damages were repaired at the vehicle. Traces of repairs, which allow conclusions about the area of repair, were not recognizable during the inspection.



Figure 1: Diagonal front (left)



Figure 2: Diagonal front (right)



Figure 3: Diagonal rear (left)



Figure 4: Diagonal rear (right)

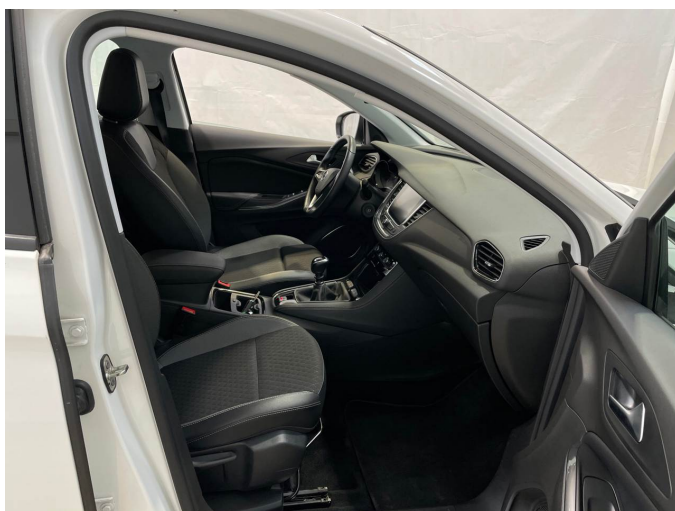


Figure 5: Interior - front

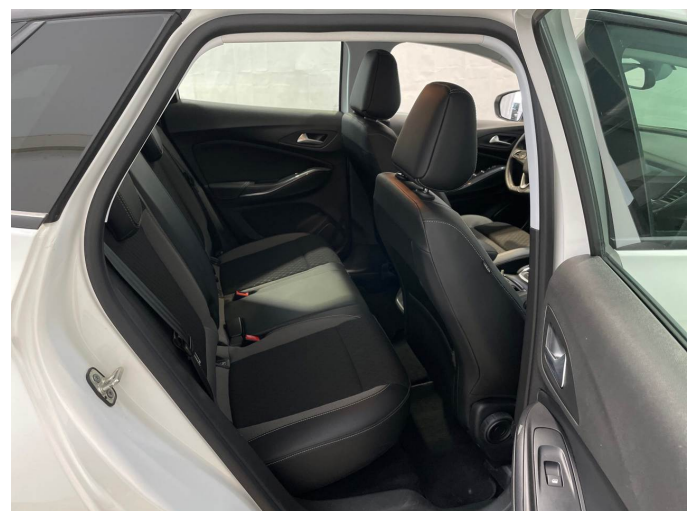


Figure 6: Interior - rear



Figure 7: Instrument cluster



Figure 8: Instrument panel



Figure 9: Interior 360° view



Figure 10: Cargo area

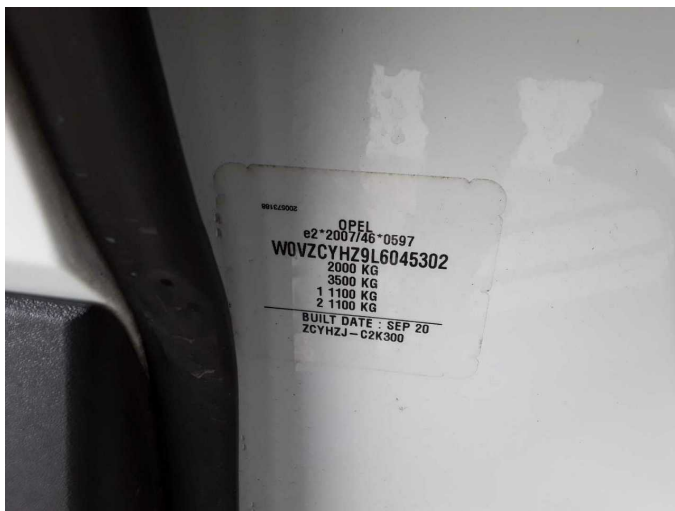


Figure 11: VIN



Figure 12: Mounted tyres

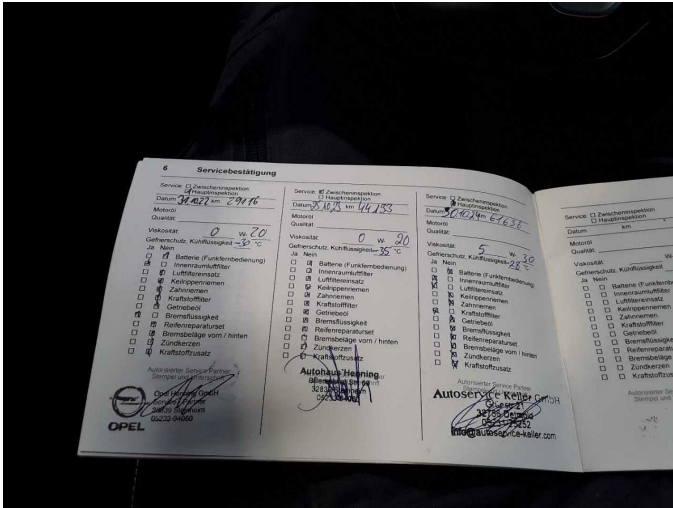


Figure 13: Documents

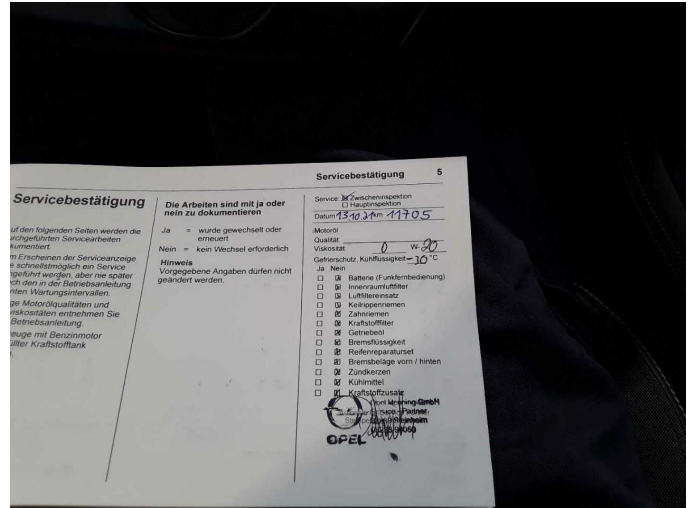


Figure 14: Documents



Figure 15: Documents



Figure 16: Documents

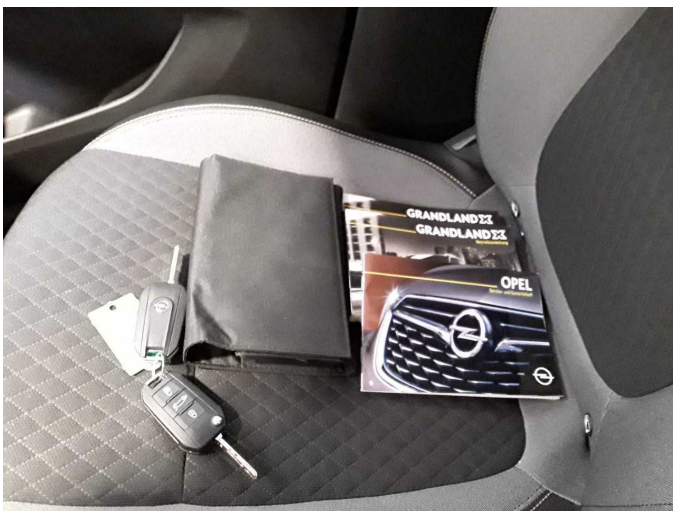


Figure 17: Documents



Figure 18: Additional tyres



Figure 19: Navigation



Figure 20: Misc.



Figure 21: Misc.



Figure 22: Misc.



Figure 23: Misc.



Figure 24: Misc.



Figure 25: Misc.



Figure 26: Misc.



Figure 27: Misc.



Figure 28: Misc.



Damage 1: Equipment: Tirefit filler - Expired - Replace